

GMC S-15 JIMMY



GMC... A TRUCK YOU CAN LIVE WITH

GMC S-15 JIMMY ... 4WD SPORT UTILITY TRUCK

HIGH QUALITY AND VALUE

Our 1985 S-15 trucks utilize advanced technology that only was dreamed about when we started back in 1902. But our ultimate goal hasn't changed—to offer efficient, quality light-duty trucks that are a pleasure and comfort to drive. We want you to be assured of comfort, convenience, aerodynamic efficiency, corrosion protection, and impressive value. Furthermore, all the people at GM who plan and build trucks for you are constantly seeking ways to make them even better.



Computers expedite the planning, design, and manufacture of the GMC S-15 Jimmy.

In the design stages, computers capable of simulating the actual performance vehicles in various driving situations are used to analyze ride and handling characteristics to aid in component selection. To achieve desired aerodynamic efficiency, S-15 trucks are tested for air drag in a wind tunnel with a huge 43-foot-diameter fan at the GM Technical Center in Warren, Michigan. At GM Proving Grounds, under grueling road-test conditions, and almost every conceivable climatic variation, vehicles are subjected to precision performance evaluation. An S-15 Jimmy with its approximately 10,000 parts undergoes about 1000 tests or checks for quality during assembly.



Constant quality checks are made during assembly.



4-WD Sierra Classic S-15 Jimmy. Tires are supplied by various manufacturers.

JIMMY...SPORT UTILITY TRUCK

For a sensational off-road caper you need a great getaway vehicle—the 1985 GMC 4-WD S-15 Jimmy! It's a sport utility truck that can be equipped to carry four adults and their luggage nearly anywhere they choose to go. Or, with the available 2-passenger rear seat folded flat, S-15 Jimmy has a load floor that's over 68 inches long — room to spare for long objects, camping gear, or whatever — up to 67.2 cubic feet.

EASY SHIFTING FROM 2-WD TO 4-WD WITH INSTA-TRAC

When the trail goes from fast track to low traction, one lever makes the shift from 2-WD HI to 4-WD HI, at any speed, without stopping. When you want to resume fuel-efficient freewheeling, just shift back to 2-WD HI and keep trucking. In 2-WD the front differential is disengaged, reducing gear wear and drag.

NEW SPORT TRIM FOR '85

Gypsy Sport available trim features new black chrome grille and headlamp bezels, door handles, key cylinder covers, and taillamp trim. And, there's a new available black rooftop luggage carrier to match the new Gypsy Sport trim. See pages 6 through back cover for more ways to create your one-of-a-kind S-15 Jimmy.

GMC COMMITMENT PLUS

Your first fill-up in your factory installed fuel tank is on us ... and there's more. See page 8 for details.



4-WD Sierra Classic S-15 Jimmy. Tires are supplied by various manufacturers.

NEW STANDARD TECH IV POWER

A new electronically fuel-injected 2.5 Liter four-cylinder gasoline engine is now standard in S-15 Jimmys. It's combined with the standard 4-speed manual transmission, or you can opt for the tough power of an available 2.8 Liter V6. Available five-speed manual or 4-speed automatic overdrive transmissions can be ordered with either engine.

NEW LOW-PRESSURE GAS SHOCK ABSORBERS

Standard ... they provide improved ride characteristics. Not available with on/off-road tires.

4-WD FRONT-AXLE DIFFERENTIAL



SHIFT FROM 2-WD HI TO 4-WD AT ANY SPEED WITHOUT STOPPING

- 1 Power comes from transfer case.
- 2 A locking sleeve engages right side of axle to transmit power to both front wheels.
- 3 In 4-WD both front wheels turn under power. Shifting from 4-HI to 2-WHEEL disengages the locking sleeve permitting front free-wheeling efficiency.

GMC BEAUTIFUL 2-WD S-15 JIMMY

S-15 Jimmy with 2-wheel drive is a flexible family sport wagon or vocational vehicle when 4-WD capability is not required. With its 100.5" wheel-base Jimmy is sized right for remarkable maneuverability, and its payload capacity (people and cargo) is 1000 pounds.

ROOMY INSIDE

Available rear bench seat expands seating to four passengers with room at back for luggage. In '85 new automatic-locking seat belts are standard on the front passenger seat and included with the rear-seat option. The rear seat folds to create a flat floor area with 67.2 cu ft of cargo space.

NEW EXTERIOR/INTERIOR TRIM FOR '85

In addition to the new black exterior trim for Gypsy Sport, all Jimmy models have a new black chrome finish for the tailgate release handle and lock cylinder plus the antenna included with available radios.

To personalize your S-15 Jimmy, we offer new available custom two-tone paint schemes and new styled road wheels on 2-WD models (included with 2-WD Gypsy Sport). On the inside, new pigskin-grain custom vinyl trim is featured for standard Sierra and available Sierra Classic models.

NEW CONVENIENCE FOR '85

Controls for the available intermittent windshield wipers are handier to use in '85, being fully integral with the multifunction switch on the steering column. There's a new partitioned fuse panel to facilitate electrical system service. And, our selection of available radios has been expanded. See pages 5 through back cover for chassis equipment, standard and available equipment, paint colors, and technical data.



2-WD Sierra Classic S-15 Jimmy with available special two-tone paint. Tires are supplied by various manufacturers.



When tilted, passenger seat slides forward



Available Gypsy rear seat

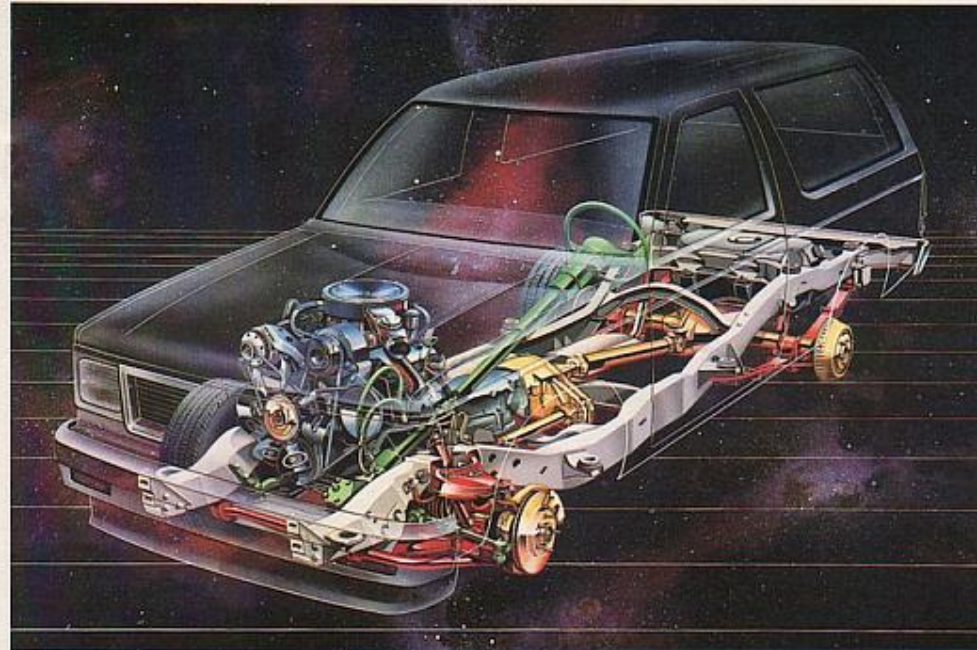


Sierra Classic interior



Gypsy interior with available sheepskin seat covers

GMC TOUGH



4-WD S-15 Jimmy cutaway

Double-Wall Construction is used in the hood, cowl, windshield pillars, front fenders, rear side panels, and tailgate.

Welded Steel Body—One-piece fabrication of major body panels for overall body structural rigidity, including rear quarter panels, wheel-houses, door and tailgate opening frames. New for '85—front fenders are fastened to the cowl with two bolts instead of one for added rigidity. New two-side-galvanized steel is used for front fender skirts and hood inner panel for added corrosion protection.

Carbon Steel Full Frame has a welded front box section and open-channel rear section. Entire frame is coated with hot wax to resist corrosion. New welded-on front bumper brackets are used for bumper-to-frame attachment in '85.

4-WD Torsion-Bar Independent Front Suspension employs rubber-bushed upper and lower control arms with torsion-bar springs attached to the lower arms, providing good ground clearance and low overall height as well as impressive ride and handling.

GM Protection Plan: An option that offers service protection beyond that provided by GM's new vehicle limited warranty. Available only in the USA and Canada during the 1985 model year. See your dealer for details.

EXTENSIVE ANTI-CORROSION TREATMENT

- Coated steels for most body and front-end sheet metal parts
- Zinc phosphate wash
- Entire body, including battery tray, fender skirts, and radiator support assembly, Cathodic Epoxy dip-primed
- Primer on all exterior surfaces
- Anti-chip coating entire length of rocker area
- High-quality acrylic enamel paint
- Wax coating in floor cavities
- Bonding and/or sealing of all glass, door areas, and endgate
- Double sealing of rear body area
- Rear wheelhouses sprayed with sound deadener

NEW TECH IV POWER

2.5 Liter L4 Gasoline Tech IV Power is Standard
New for '85 S-15 Jimmys, the standard engine for both 2-WD and 4-WD models is an electronically fuel-injected 2.5 Liter in-line 4. It features low-weight to horsepower ratio, low friction roller hydraulic valve lifters, swirl inlet ports, and more.

2.8 Liter V6—An available, smooth-operating gasoline engine with power and torque to move larger payloads efficiently. It's available for all Jimmy models and is required with available Trailering Special Equipment. For '85 a new pre-cleaner air cleaner is available with the V6 engine.

Transmissions—The standard transmission is a 4-speed manual. For added driving pleasure you may select available 5-speed manual overdrive, or 4-speed automatic overdrive transmission with either the L4 or V6 engine.

ENGINE TECHNICAL DATA

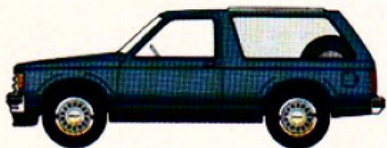
Displacement, Type	2.5 Liter EFI L4	2.8 Liter 2-8bi V6
Engine Ordering Code	LN8	LR2
Bore and Stroke, mm	101.6 x 76.2	89 x 76
Compression Ratio	9.0:1	8.5:1
SAE Net Horsepower @ RPM	92 @ 4400	115 @ 4800
SAE Net Torque Lb/Ft @ RPM	134 @ 2800	150 @ 2100

EFI = Electronic Fuel Injection

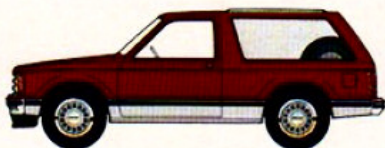
A WORD ABOUT ENGINES

GMC Trucks are equipped with engines produced at facilities operated by GM car and truck groups, subsidiaries, or affiliated companies worldwide.

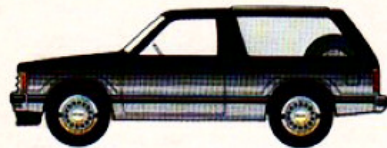
PAINT SCHEMES



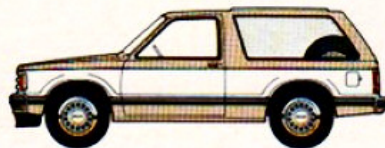
Sport Two-Tone scheme with striping on Sierra



Sport Two-Tone scheme with moldings



New Custom Two-Tone scheme on Sierra Classic



Special Two-Tone scheme on Sierra

Standard Solid Color—For Sierra and Sierra Classic models (see colors below). Available with this scheme: body striping in selection of six colors; black body-side moldings and/or black or bright wheel-opening moldings where not already provided.

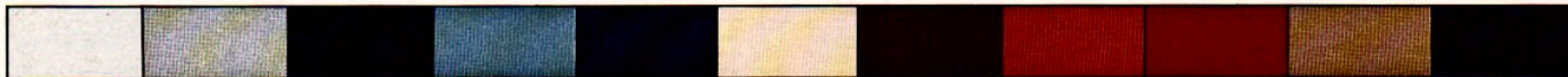
New Available Custom Two-Tone—For all models. Includes new body striping in selection of five colors. Available with this scheme: black body-side moldings and/or black or bright wheel-opening moldings where not already provided.

Available Special Two-Tone—For Sierra and Sierra Classic models. Center accent color on sides, front, and rear. Black body-side and bright wheel-lip moldings included on Sierra models. Black wheel-lip moldings available.

Available Sport Two-Tone—Lower accent color* extends around sides, front, and rear. Sierra models include lower body striping. Black moldings may be substituted on Sierra models at extra cost. Scheme is standard with Gypsy Sport package.

*Choice of five standard colors plus Satin Black.

EXTERIOR COLORS



Frost White Silver (M) Midnight Black Light Blue (M) Galaxy Blue (M) Doerskin Tan Indian Bronze (M) Cinnamon Red Apple Red Desert Sand (M) Satin Black (Sport two-tone accent only)

Note: For accurate colors, ask your GMC Dealer to show you actual paint color chips or fabric swatches.

GMC
TRUCKS
GENERAL MOTORS CORPORATION
TRUCK & BUS GROUP

Let's Get It Together...Buckle Up.

Every new 1985 GMC Light Duty truck delivered by a GMC Truck Dealer in the United States comes with a one-year, \$10,000 seat belt insurance certificate from MIC General Insurance Corporation at no additional charge. \$10,000 will be paid to the estate of any occupant who suffers fatal injuries as a result of an accident involving that vehicle while wearing a GM seat belt. Buckle up every time you drive.



TECHNICAL INFORMATION

MODEL TYPE	GASOLINE ENGINE	
	2-WHEEL	4-WHEEL
DRIVE TYPE	2-WHEEL	4-WHEEL
PAYLOAD RATING (lb)	1000	1000
ENGINE/TRANSMISSION AVAILABILITY		
2.5L L4/4-Speed Manual	Standard	Standard
2.5L L4/5-Speed Manual Overdrive	Available	Available
2.5L L4/4-Speed Automatic Overdrive	Available	Available
2.8L V6/4-Speed Manual	Available	Available
2.8L V6/5-Speed Manual Overdrive	Available	Available
2.8L V6/4-Speed Automatic Overdrive	Available	Available
FRONT SUSPENSION	Independent, Coil Springs (2-WD)/Torsion Bars (4-WD)	
Capacity (lb)	2200	2400
Spring/Torsion Bar Capacity (lb) (1)	1100	1200
Shock Absorber Diameter (mm)	Std:25; Avail:32	Std:25; Avail:32
Stabilizer Bar Diameter (mm)	29	32
REAR SUSPENSION	Salisbury Axle, Leaf Springs	
Axle Capacity (lb)	2600	2700
Spring Capacity (lb) (1)	1350	1350
Shock Absorber Diameter (mm)	Std:25; Avail:32	Std:25; Avail:32
BRAKES	Hydraulic, Front Disc/Rear Drum	
Vacuum Booster	Standard	Standard
Parking	Cable to Rear Wheels	
STEERING	Std:Manual; Avail:Power	
TIRES, RADIAL PLY	Standard	P195/75R-15(2)
	Available	Various; Consult your GMC Dealer
FUEL TANK CAPACITY (gal)	Std:13.2; Avail:20	
FREEDOM BATTERY, CCA	Standard	405
	Available	515
GENERATOR, AMPS	Std:56; Avail:66	

CCA = Cold Cranking Amps

1 - At ground, each

2 - All Seasons type

GMC Commitment Plus: To show our appreciation should you decide to purchase an eligible 1985 GMC Light-Duty Truck, your dealer will fill your factory-installed fuel tank at time of delivery, and you will receive a Personalized Identification Card to include with your Owner Package. Applies to retail sales only.