

1994  DODGE

S T E A L T H



Concealed beneath its skin is an impressive array of high-performance technology. Six speeds exact every last rpm of power, while full-time all-wheel drive puts the wheels squarely on the pavement. Four-wheel steering and a variable, active suspension give you the edge on cornering. And four oversized, power-assisted discs with standard ABS make landings precise. Boasting new body styling and three distinct equipment levels, Stealth* delivers performance that's altogether unseen in its price range... and even beyond.

Stealth R/T Turbo, shown below in Pearl Yellow. *Planned and Designed by Daimler, a Division of Chrysler Corporation. Engineered and manufactured by Mitsubishi Motors Corporation.



Stealth R/T Turbo performance features include: a cast aluminum twin intercooled, twin turbocharged 3.0-liter 24-valve DOHC MPI V6 engine • output: 320 hp at 6,000 rpm • torque: 315 lb-ft at 2,500 rpm • a Getrag six-speed gearbox • 0-60 mph time: 5.3 seconds • vented front and rear disc brakes • integrated four-wheel anti-lock brakes • 17" aluminum wheels



Some of the equipment shown or described throughout this catalog is available at extra cost.

About this catalog: Since the time of printing, some of the information you'll find in this catalog may have been updated. Ask your dealer for details.

"The car is nothing short of a
3,800-lb adrenal pump."

— Design News



**The R/T line:
A match for anyone**

This year, Dodge presents sports car enthusiasts with three levels of Stealth excitement. Joining the high-performance all-wheel-drive R/T Turbo for 1994 are a redefined R/T model (available with a Luxury Equipment Package) and an updated base Stealth. All with standard dual air bags.*

Visually, the Stealth line sports a more refined, freshly remodeled exterior, including a new front fascia, a new rear fascia (except on base

model), aero-integrated projector headlights and smoothed hood contours with integral strut covers. Stealth R/T Turbo and the R/T with Luxury Equipment Package feature a distinctive black roof, side cladding and integrated fog lights, plus a new color — Pearl Yellow.

The Stealth R/T with Luxury Equipment Package features much of the same technology found in the R/T Turbo. Like dual-mode active suspension, which allows you to choose "Sport" or "Tour" settings with the push of a button.

In the "Tour" mode, the system processes data from steering, brake, throttle and g-force sensors and automatically assigns the most appropriate of three damping rates for each shock absorber. In the "Sport" mode, the shocks are fixed in the firmest setting for optimal control.

For those seeking a purer sports car experience, the Stealth R/T delivers some pretty impressive performance stats — but with fewer electronic features than R/T Turbo. It's all a matter of personal preference... finding your match.

Above: The Stealth R/T with Luxury Equipment Package, shown in Firestorm Red, includes: • Independent four-disc power-assisted anti-lock brakes • 150-watt Infinity audio system with power antenna and six-disc CD changer • Steering wheel-mounted radio and cruise controls • Power lumbar and back wing seat adjusters • Power windows and locks • Sunroof • Rear spoiler • Six-point security alarm system with keyless entry.

Left: Stealth R/T, shown in Firestorm Red, includes: A 222-hp 3.0-liter 24-valve, DOHC MPI V6 • Four-wheel independent suspension • Four-wheel disc brakes (with available ABS) • 16" cast aluminum wheels with Goodyear GSD performance tires.

**Always wear your seat belts.*



Stealth: Open one up

From its windswept cowl and high-arching contoured dash featuring full-analog instrumentation to its no-nonsense short-throw shifter on the center console — Stealth is visually as striking inside as out. An optional leather interior, shown above in Dark Gray, is available (except on base Stealth) in addition to all-new cloth interiors.

With four-passenger seating and significantly greater interior space than competitors in its class, Dodge Stealth adds a new dimension to high-performance touring. And

split-back fold-down rear seats provide even greater cargo-carrying flexibility and capacity.

Speaking of interior "volume," you'll want to listen to Stealth's optional eight-speaker, 150-watt Infinity audio system (not available on base Stealth). Or choose the 100-watt Ultimate Sound System — standard with R/T Turbo and included in the R/T Luxury Equipment Package. Pair either with an optional trunk-mounted six-disc CD changer for previously unheard of driving enhancement.



"Never before have you been able to drive so much technostuff for so little money."

— Motor Trend



Above: Stealth R/T Turbo's cockpit shown in Dark Gray.

Right: Available portable phone is a dealer-installed accessory.

Far left: Optional 150-watt Infinity audio system.

Left, top: 100-watt Ultimate Sound System.

Left, bottom: Trunk-mounted six-disc CD changer.



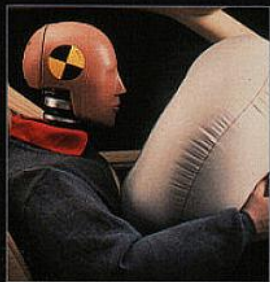
"Vise-grips won't grab a bystander's gaze any harder."

— *Car and Driver*



Stealth Basics

Even the base Stealth is far from basic. With a 3.0-liter 12-valve



single overhead cam MPI V6 putting out 164 horsepower, the Stealth more than lives up to its looks. And with its standard body-colored bodyside moldings and new front fascia, Stealth will continue to turn heads wherever it is seen.

As a reflection of Dodge's commitment to customer and passenger protection, every Stealth now features driver and front passenger air bags* standard along with three-point Unibelt seat belts, front and rear.

In addition, independent four-wheel disc anti-lock brakes are standard equipment on Stealth R/T Turbo, included in the R/T with Luxury Equipment Package, and available as a safety and performance option on the R/T and base Stealth.

Environmental safety is also a priority at Dodge, as reflected in our replacement of CFC-based refrigerants with ozone-friendly R134a in all Stealth air conditioning units.

Stealth is designed, engineered and built to outperform its competi-

tion on every level. Even in the tiniest details — such as its standard stainless steel exhaust system — Stealth has chosen the high road.

Not surprisingly, Stealth is also backed with the utmost confidence, including a best-in-class seven-year or 100,000-mile body panel Anticorrosion Limited Warranty, and Dodge's Owner's Choice Protection Plan Power Train and Basic Limited Warranties.¹

Just don't expect such a comprehensive definition of "the basics" from any of Stealth's competitors.



Above and near left: Dodge Stealth shown in Emerald Green Pearl Coat.

Far left: Every Dodge Stealth now features dual air bags.* In a front-end collision, driver and front passenger air bags inflate within 0.05 seconds and help minimize occupant contact with hard interior car surfaces.

*Always wear your seat belts.

¹See limited warranty copy for details. Restrictions apply.

CustomerOne

Futuristic design. Innovative engineering. Quality production. All are embodied in Dodge Stealth. But to you, the car buyer, the vast resources of Chrysler Corporation are centered in just one place: the dealership.

To ensure that your experience there will be a satisfactory one, more than 100,000 dealership management, sales and service people are participating in the most extensive educational initiative in automotive history.

It's called Customer One and it establishes one unbreakable rule: Treat *every* customer you meet with honesty and respect. Customer courtesy and respect is not a goal — it is an imperative. Product knowledge is another essential, and it is imparted to dealership personnel through self-educating training materials which supplement formal product training and driving sessions. Service personnel, too, are trained, not just to provide the technical answer to a vehicle problem, but to respond personally to every owner.

That's the new Chrysler culture: new ways to research, create, test and build world-class cars and trucks — and improved ways to provide world-class treatment of the people who buy them.

STEALTH



THE NEW DODGE