

Audi

2017



Audi

A7



There is bold poetry in flawless technique.

A7	S7	RS 7	RS 7 performance
3.0T	4.0T	4.0T	4.0T

They say a poem comes together when an emotion has found its thought. It's an exacting process that helps ensure that every line not only adds to the character but also helps express a compelling, cohesive feeling. In the Audi A7, you notice it in the design lines that flow into the Singleframe® grille, or in the Tornado line that runs along the length of the vehicle, giving it a progressive contour. It's the kind of unique experience captured in a single thought that brings an emotion to life.





2017 Audi S7 Prestige shown in Daytona Gray pearl with available equipment.



2017 Audi RS 7 shown in Daytona Gray pearl with available equipment.



2017 Audi RS 7 performance shown in Glacier White metallic with available equipment.



Elegantly sporty.

Uniquely daring.

In the Audi A7, grace and nonconformity combine to create something extraordinary. When you see the elegantly arched roofline or distinctive details like the gleaming integrated trapezoidal exhaust outlets, you'll observe how this unique combination breaks from the conventional. The A7 offers the kind of visual fearlessness that draws the eye—and others' envy. Each line, slope and angle creates a contemporary artistic context, because viewing the extraordinary should be inspiring.



Give peace of mind a chance.

We understand that you can't control everything you experience on the road. That's why the Audi A7 was engineered with eight standard airbags¹ and advanced Electronic Stability Control (ESC) with a secondary collision brake assist feature. The A7 offers lightweight technology-enhanced aluminum hybrid construction that provides strength, resilience and crumple zones that help mitigate potential injuries.



The exterior is for everyone else.
The inside is just for you.



While dynamic looks will capture plenty of admirers, we saved our best design for you. Take a moment to indulge in the wraparound curve of the Audi A7 dashboard. See how it integrates intuitively with the overall driver-centric layout. Discover a new level of distinctive design, from the MMI® navigation plus system,¹ with its eight-inch display deploying out of and retracting into the dashboard, to the exquisitely crafted seats covered in available Valcona leather. Then admire the finely crafted inlays displayed before you. Now imagine that you just shifted into Drive. Sure, everyone else will stare, but we designed the A7 for you.

2017 Audi A7 3.0T Prestige shown with available Atlas Beige Valcona leather and optional equipment.

1 MMI® navigation plus depends on signals from the worldwide Global Positioning Satellite network. The vehicle's electrical system and existing wireless and satellite technologies must be available and operating properly for the system to function. The system is designed to provide you with suggested routes in locating addresses, destinations and other points of interest. Changes in street names, construction zones, traffic flow, points of interest and other road system changes are beyond the control of Audi of America, Inc. Complete detailed mapping of lanes, roads, streets, toll roads, highways, etc., is not possible, therefore you may encounter discrepancies between the mapping and your actual location. Please rely on your individual judgment in determining whether or not to follow a suggested MMI® navigation plus route. Mapping updates are available at no charge for the first five map updates and are subsequently available on a subscription basis.

Your comfort is
our labor of love.

Step into the Audi A7, and you will understand immediately the hard work and thought that went into every touch. In striving to construct an immaculately well-designed interior, we spend countless hours on the finishing refinements that make up this uniquely ergonomic space. We hope you admire the painstakingly crafted beauty of the seat that contours to you and also think our effort was well worth it. With a choice of luxurious options—a three-spoke heated steering wheel as well as available ventilated front seats, heated rear seats and standard four-zone climate control—you can create a cabin environment that expresses your own personal style.

We think it's okay to go on a power trip.

Some might say the Audi A7 is on a power trip, and for that, it offers no apologies. Decades of engineering wisdom make the A7 one of the most powerful and agile vehicles we have ever produced. With standard Audi drive select harnessing the up to 340-hp supercharged V6, paired with an eight-speed Tiptronic® automatic transmission, you get dynamic Audi performance on every drive. And iconic quattro® all-wheel drive helps give you the control that is important to channeling the performance of this powerful vehicle, no matter where your trip takes you.



// Engine

3.0-liter TFSI® supercharged V6 engine.

333 hp / 325 lb-ft
340 hp / 325 lb-ft
(3.0T competition).

// Drivetrain

Eight-speed Tiptronic® automatic transmission with quattro® all-wheel drive.

Available sport differential
(3.0T competition).

// Performance

Top track speed of 130 mph.¹

0-60 mph in 5.2 sec.

How to stand out in a crowd.

The bold, muscular body and S model design cues of the Audi S7 provide constant reminders that this is a performance car that stands out in a crowded field. Aluminum-optic blades integrated into the lower front bumper, aluminum-optic side mirror housings and platinum gray Singleframe® grille accents assert our intentions and are clear reminders that this is a premium sports car that knows how to hold its own.



It's true that the S7 doesn't conform to trends. A 450-hp, 4.0-liter TFSI® V8 with cylinder on demand™ engine efficiency technology¹ plus the relentless grip of quattro® all-wheel drive, the enhanced agility of an available sport differential and the stopping power of large, high-performance brakes leave no questions about this vehicle's ultimate intentions. The same could be said about the S tronic® dual-clutch automatic transmission, quad exhaust outlets and available dynamic steering. All together, they make for an exhilarating, unapologetically singular drive.

// Engine

4.0-liter TFSI® turbocharged V8 engine.

450 hp / 406 lb-ft.

// Drivetrain

Seven-speed S tronic® dual-clutch automatic transmission with quattro® all-wheel drive.

Available dynamic steering, sport differential and sport exhaust.

// Performance

Top track speed of 155 mph.²


0-60 mph in 4.5 sec.

S7



2017 Audi S7 Prestige shown in Daytona Gray pearl with available equipment.

¹ 2017 EPA estimates not available at time of publication. See www.fueleconomy.gov for 2017 EPA estimates. Your mileage will vary and depends on several factors, including your driving habits and vehicle condition. ² Top track speed is electronically limited in the U.S. Always obey all speed and traffic laws.



Take your rightful seat of power.

Our power doesn't stop in the engine compartment. We designed the interior of the 2017 Audi S7 to keep up with the sporty exterior and the exhilarating features under the hood. Interior features like aluminum-optic shift paddles and a flat-bottom multifunction sport steering wheel with contrast stitching help put you in control and amplify the bold elegance exuded by the exterior. And our signature Valcona leather-covered sport seats with distinctive diamond stitching will make you feel comfortable behind the wheel. In the S7, the road is your domain, and the driver's seat is your throne.



S7



Exuding more than an inner confidence.

Confidence manifests itself in the Audi RS 7 with bold aluminum-matte air intakes and a pronounced, sleek chin spoiler. We also give you a deeper connection to the road with available Audi Sport® 21" 5-spoke-blade design wheels accompanied by weight-saving wave-cut design brakes. Inside, we gave it the unmistakable look of power, with a wide array of high-end touches like RS-design Carbon Fiber inlays and Valcona leather with honeycomb stitching that echoes the exterior Singleframe® grille design. It is a performance vehicle cut with a sculptor's tools—an ingenious blend of unrestrained lines and crafted fit. It is the result of an obsession with timeless design, and it has earned the confidence you will feel with every drive.

RS 7



2017 Audi RS 7 shown in Daytona Gray pearl with Black Valcona leather and available equipment.



Speed isn't all there is to thrill.

Velocity alone means nothing without the strength to focus all of that energy. So we built the Audi RS 7 to be a vibrant, strutting, gleaming machine that seemingly pulsates even when standing still. This is a true track-tested driver's vehicle, with all the power such a title promises—560 hp unleashed by a 4.0-liter TFSI® V8, with a top track speed of 174 mph¹—and the road-feel of a more refined performer, articulated through dynamic steering, Audi adaptive air suspension and quattro® all-wheel drive with sport differential. And the moment you feel the thundering sonic punch of the available sport exhaust, you'll feel the depth of character that makes this a truly remarkable vehicle.



// Engine

4.0-liter TFSI®
turbocharged
V8 engine.

560 hp / 516 lb-ft.

// Drivetrain

Eight-speed Tiptronic®
automatic transmission with
quattro® all-wheel drive.

Dynamic steering, sport
differential and available sport
exhaust.

// Performance

Top track speed of
174 mph¹

0-60 mph in 3.7 sec.



RS 7

2017 Audi RS 7 shown in Daytona Gray pearl with available equipment.

¹ Top track speed is electronically limited in the U.S. Always obey all speed and traffic laws.



RS 7

performance



2017 Audi RS 7 performance shown in Sepang Blue pearl with available equipment.

**A performance that
earns an ovation.**

The aggressive design of the new Audi RS 7 performance model is uniquely disruptive in a sea of familiar high-performance sedans. The available Black leather and Alcantara® seats with Mercato Blue contrast honeycomb stitching are as eye-catching as they are sporty, and carbon fiber touches inside offer a contemporary accent to this timeless vehicle. But the melody crescendos to the standard carbon optic exterior that looks ready for discord, featuring a gloss black Singleframe® grille and gloss black window trim, carbon front spoiler lip and air inlets, and a carbon rear diffuser. With looks this revolutionary, the RS 7 performance is as likely to inspire joy as it is to incite a riot, and while everyone you pass by might not clap, they will certainly stand at attention.



2017 Audi RS 7 performance shown with available Black/Mercato Blue Audi design selection and optional equipment.

Let the roar of the
engine speak for you.



// Engine

4.0-liter TFSI®
turbocharged
V8 engine.

605 hp / up to
553 lb-ft.

// Drivetrain

Eight-speed
Tiptronic® automatic
transmission with
quattro® all-wheel drive.

Dynamic steering, sport dif-
ferential and sport exhaust.

// Performance

Top track speed of
190 mph.¹

0-60 mph in 3.6 sec.



RS 7
performance

On the road, your car speaks for you. Consider, then, what it means when you hear the euphonic exhaust note of the new Audi RS 7 performance model's 4.0-liter TFSI® V8 through the standard sport exhaust or the available Audi Sport® titanium exhaust system, which isn't just for looks, but also reduces the static weight of the exhaust system by 17.6 lbs. Reflect on what it means to go from 0-60 mph in 3.6 seconds, with the taut tuning of the DRC® suspension system that actively reduces body pitch and roll, along with the legendary quattro® all-wheel drive. Feel the incredible stopping power of Audi ceramic brakes that help dissipate heat to improve braking force. Let the RS 7 performance speak for you, and delight in the attention you get.

¹ Top track speed is electronically limited in the U.S. Always obey all speed and traffic laws.

2017 Audi RS 7 performance shown in Sepang Blue pearl with available equipment.

On our radar, off your nerves.



- Cameras
- Radar sensors
- Ultrasonic sensors

Dramatization

Audi uses extra sensors for better perception.

Knowing that you can process only so much information at once, we set out to provide you with driving technologies that help lighten the sensory load. Whether it's available advanced technologies like night vision assistant, which uses infrared technology, or Audi side assist, which utilizes radar sensors to help inform you of vehicles approaching from the side and rear, you'll find that there is technology to help keep you aware of your surroundings, so you can focus on enjoying your drive.¹

Standard driver assistance aids

Audi pre sense[®] basic¹

Audi side assist and Audi pre sense[®] rear¹

Parking system plus with rear view camera¹

Driver Assistance package

Available on Premium Plus and Prestige models

Audi adaptive cruise control with stop & go

Audi active lane assist¹

Audi pre sense[®] plus¹

Corner view camera system

High-beam assistant¹

Other driver assistance aids

Available on Prestige models

Night vision assistant with pedestrian and large animal detection¹

For a complete list of Driver Assistance package features, please see Trim Section of this brochure for more details.

Please download and visit the Audi library—available at the App Store[®], Google Play[™] Store and AudiUSA.com/brochures—to dive deeper into the Audi A7 as well as other models and Audi information²

¹ The features discussed are not substitutes for attentive driving. Please see your owner's manual for further details and important limitations. ² Standard text and data usage rates apply.

Our focus is your focus.

Let's face it—in our modern lives, we are constantly pulled in different directions. To help combat this, the MMI® system offers a wealth of easily accessible information with a simple touch. An elegantly natural extension of your hand, MMI touch with handwriting recognition offers the ability to give commands and retrieve media with just a few simple strokes on the pad. You can quickly have access to information such as music files, contact information and destinations. And the possibilities are even bigger when you input to Audi connect® or engage with the Google Earth™ navigation,¹ which serves up colorful visuals of your location, between the tachometer and speedometer.

¹ Always pay careful attention to the road, and do not drive while distracted. Audi connect® should only be used when it is safe and appropriate. Audi connect services and features are optional, provided with the support of authorized affiliated and third party service providers, and may require additional subscriptions with separate terms and conditions. Available on select models. Certain services collect location information, see Terms of Service for information about how to disable and for other details.



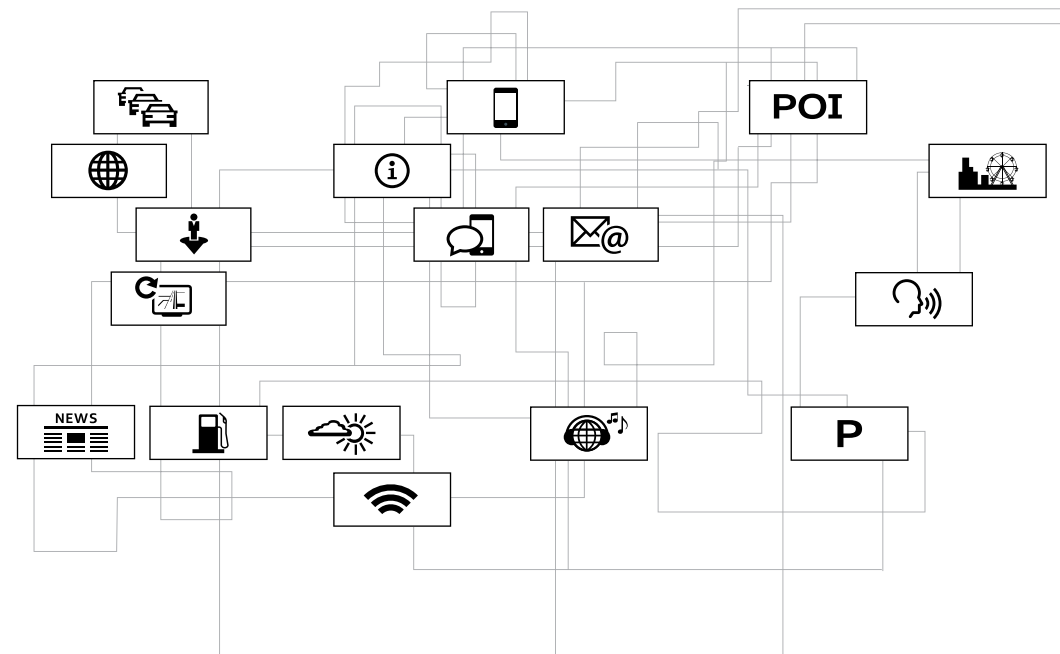
Take comfort in the familiarity of your mobile device when you connect it via Audi smartphone interface. When linked with a compatible mobile device, Apple CarPlay™ will allow you access to Siri® and iPhone® and your favorite apps such as Apple Music™, Maps, Messages and more. If you have a compatible Android device, Google™ Android Auto can connect you with Google Play™ Music, Google Maps™, Google Search and more.¹



Shown with Audi smartphone interface supported by Apple CarPlay™.

The soul of a new machine.

Stay connected even when you're on-the-go with the power of the next-generation Audi connect® system.² Looking for interesting events in your area? Want to avoid heavy traffic? Want to help keep passengers entertained with an in-vehicle Wi-Fi® hotspot?³ Audi connect offers a robust portfolio of services with the means to inform, entertain and get you to where you want to go.



The orchestra rises for your applause.

When we set out to compose the most precise sound system we've ever assembled, we didn't want you to just hear every note. We wanted you to experience them. From perfectly sculpted high notes to a crystal-clear mid-range to deep-diving lows, the available Bang & Olufsen® Advanced Sound System delivers a stunning recreation of sound that you can feel as much as hear. Innovative sound engineering can also be found in the BOSE® Surround Sound System, which effortlessly brings a performance to life. So whether you're in the mood to be soothed, engaged or inspired, you can expect an immersive experience that can only be matched by the precision driving of your Audi.

¹ Always pay careful attention to the road, and do not drive while distracted. Not all features available on all operating systems. Standard text and data usage rates apply. These features require a compatible device, operating system, and mobile apps. See mobile device and app providers for terms and privacy. ² Always pay careful attention to the road, and do not drive while distracted. Audi connect® should only be used when it is safe and appropriate. Audi connect services and features are optional, provided with the support of authorized affiliated and third party service providers, and may require additional subscriptions with separate terms and conditions. Available on select models. Certain services collect location information, see Terms of Service for information about how to disable and for other details. ³ Always pay careful attention to the road, and do not drive while distracted. The Wi-Fi® hotspot feature is intended for passenger use only.





A



B



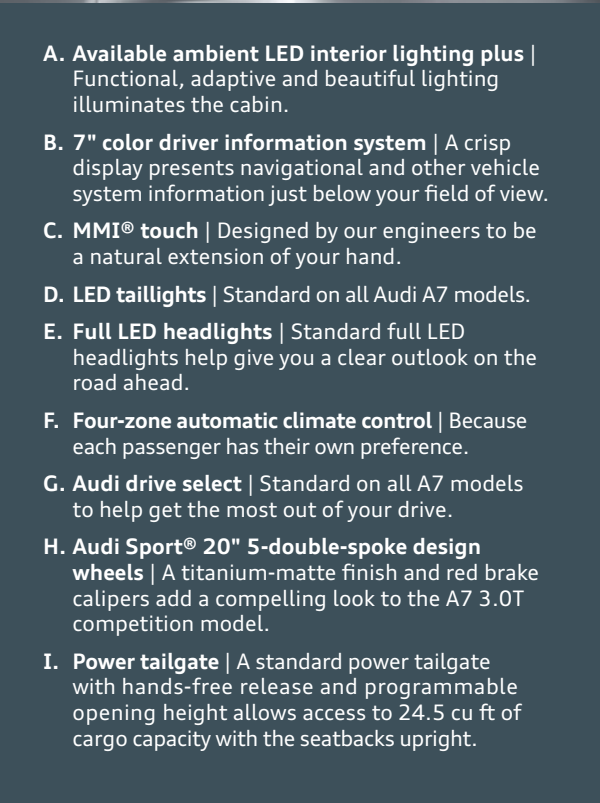
C



E



F



G



H



I

A. Available ambient LED interior lighting plus | Functional, adaptive and beautiful lighting illuminates the cabin.

B. 7" color driver information system | A crisp display presents navigational and other vehicle system information just below your field of view.

C. MMI® touch | Designed by our engineers to be a natural extension of your hand.

D. LED taillights | Standard on all Audi A7 models.

E. Full LED headlights | Standard full LED headlights help give you a clear outlook on the road ahead.

F. Four-zone automatic climate control | Because each passenger has their own preference.

G. Audi drive select | Standard on all A7 models to help get the most out of your drive.

H. Audi Sport® 20" 5-double-spoke design wheels | A titanium-matte finish and red brake calipers add a compelling look to the A7 3.0T competition model.

I. Power tailgate | A standard power tailgate with hands-free release and programmable opening height allows access to 24.5 cu ft of cargo capacity with the seatbacks upright.

You're a try-anything-once, never-sit-still, give-it-your-all kind of person. Life doesn't just string you along; you strive to take life further. Audi Genuine Accessories can help you do just that. For personalizing, help in protecting and showing your Audi pride, our accessories were made for your lifestyle.

Now for the finishing touches.



A. Ski and snowboard racks¹

These racks help transport your equipment to the slopes. The standard attachment (shown) holds two sets of skis or two snowboards. A deluxe attachment, sold separately, holds up to six sets of skis or four snowboards.

B. Aluminum bike rack¹

Help protect your other ride. This locking holder fits 20- to 80-mm bike frames with both wheels on the bike and helps keep the bike upright as you secure it in place.

C. Compact cargo carrier¹

Extra gear won't take up valuable cargo space with our aerodynamic carrier that offers a generous 10.5-cu-ft capacity. Size: 76" long, 26" wide, 15" high.



¹ All roof-rack system attachments require the base carrier bars. All attachments sold separately. Recreational equipment, sporting equipment and luggage not included.

Audi Genuine Accessories

Audi Genuine Sport and Design Accessories

For a bolder appearance or a finishing touch, we have a solution that helps make every mile more enjoyable—and more yours.

- ▶ Stylish wheel designs
- ▶ Audi beam
- ▶ License plate frames

Audi TravelSpace Transport Accessories

When on the go, help make sure your gear fits with a variety of intelligent and innovative solutions.

- ▶ Bike and ski racks
- ▶ Rooftop cargo carriers
- ▶ In-vehicle cargo bags

Audi Guard Comfort and Protection Accessories

Help protect what you love. Use Audi Guard Comfort and Protection Accessories to help keep your Audi looking like new—inside and out.

- ▶ Floor mats
- ▶ First aid kit
- ▶ Cargo mats

Audi Guard Car Care Products

Your Audi A7 deserves the best—a car care line designed specifically for Audi.

- ▶ Leather care
- ▶ Detailing tools
- ▶ Winter protection

A. 19" 5-V-spoke design winter wheel and tire package

Adding style and performance, this winter wheel and tire package features Audi Original winter tires specifically engineered to help improve traction and handling in a variety of winter weather conditions.¹ See your authorized Audi dealer for details.



B. 20" 5-arm parabolic design wheel and tire package

Add an impressive finishing touch with this eye-catching design. Anthracite with machine-polished spokes.



C. Premium textile floor mats

These skid-resistant, precision-fit mats are made of long-life fabric to help protect your vehicle's interior from the elements. Mats are black and available in a set of four.



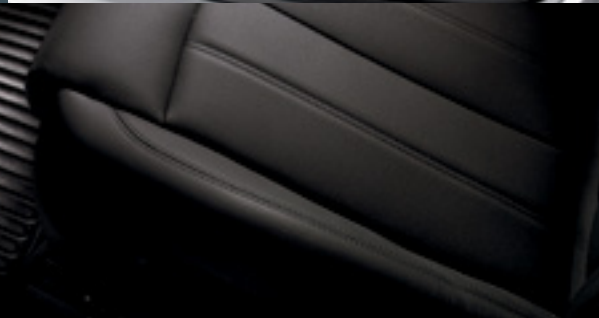
D. All-weather cargo mat

Custom fit for your A7, the raised outside edge of the cargo mat helps contain spills and protect cargo-area carpeting from stains. The textured material helps control load shifting.



E. All-weather floor mats

The all-weather floor mats feature a deep-ribbed, channeled design that helps protect your vehicle's floor and carpeting from the elements. Black mats are available in sets of two for front or rear. Front mats feature the A7 logo.



Audi collection



Audi Sport® iPhone® case shown above.

F. Men's Ingolstadt jacket

This three-layer performance soft-shell jacket, with a bonded fleece lining and an interior membrane, features custom map artwork in front and the Audi rings logo on the sleeve.



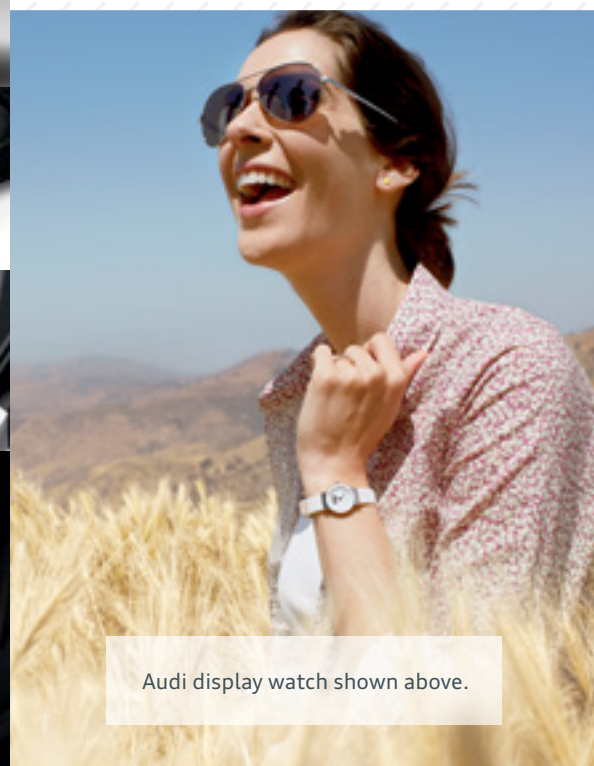
G. Oakley® Tech Sport Duffel

This duffel fits the bill for a long weekend or for getting your gear to the gym. Fabric handles and a padded shoulder strap offer versatile and comfortable carrying options, while an ample main compartment and multiple specialized pockets inside and out offer accessibility and organization. 26.25" W x 11.25" D x 12.5" H.

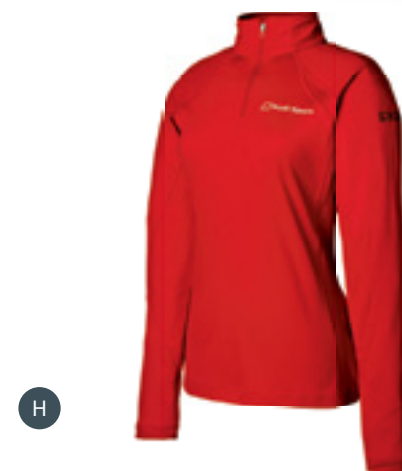


H. Ladies' half-zip mock neck by Spyder®

Moisture-wicking, quick-drying, slim-fit material provides plenty of comfort. Features the Spyder® and Audi Sport logos and is available in black, red, gray or white.



Audi display watch shown above.



Visit parts.audiusa.com for more.

¹ When driving during cold, snowy, or icy weather conditions, ensure that your vehicle is equipped with appropriate all-season or winter weather tires. Even with appropriate tires, you must always drive in a manner appropriate for the weather, visibility and road conditions.

Visit audicollectionusa.com for more.

A7 3.0T competition

A win for our competitive nature.



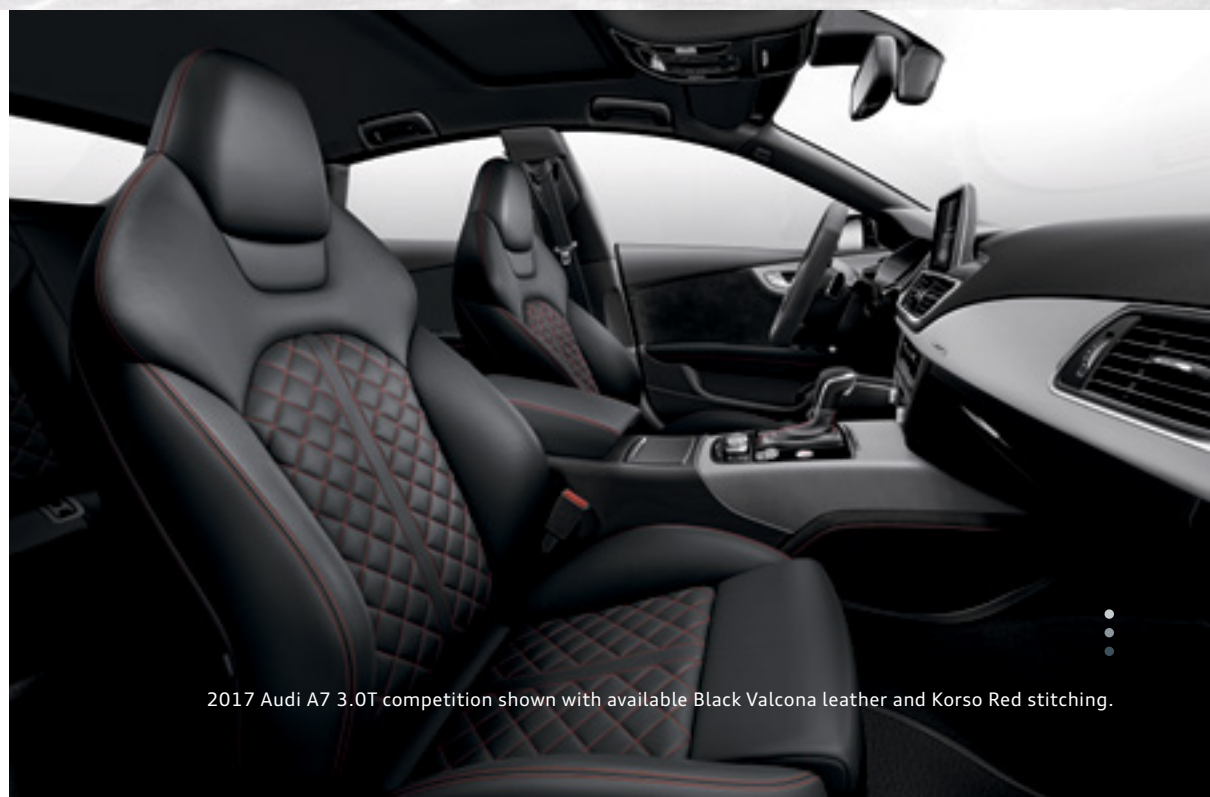
2017 Audi A7 3.0T competition shown in Misano Red pearl with available equipment.

Experience more in Audi library.

Dive deeper into the technical specifications, trim levels and technologies of the Audi A7, S7 and RS 7 through the Audi library app or web viewer.¹ Go to the App Store®, Google Play™ store or Audiusa.com/brochures to download or view this repository of all things Audi—including a comprehensive look at the 2017 Audi A7.



¹ Standard text and data usage rates apply.



2017 Audi A7 3.0T competition shown with available Black Valcona Leather and Korso Red stitching.

When it comes to competition, we're in a race with ourselves. The new 2017 A7 3.0T competition adds exterior attitude with a black-optic exterior, black mirror housings and red brake calipers to a powerful 340-hp 3.0-liter TFSI® engine. With S sport seats with contrast stitching and hardware never before seen on an A7, like the sport rear differential, you can be assured the A7 3.0T competition is a win for the driving enthusiast.

A7

3.0T Premium Plus



2017 Audi A7 3.0T Premium Plus shown with optional 20" Wheel package.

A7 Premium Plus Featured highlights

Infotainment/Technology

- > MMI® navigation plus with voice control system and MMI® touch with handwriting-recognition technology¹
- > Audi connect® with six-month trial subscription²
- > 7" color driver information system
- > BOSE® Surround Sound System with 14 speakers, AudioPilot® noise compensation and 630 watts
- > HD Radio™ Technology
- > SiriusXM® Satellite Radio with 90-day trial subscription³
- > INRIX XD® Traffic⁴
- > SD card slot with 64GB operating capacity (dual slots)
- > Audi smartphone interface including Apple CarPlay™ and Google™ Android Auto
- > BLUETOOTH® streaming audio for compatible devices
- > BLUETOOTH® wireless technology preparation for compatible mobile phones

Driver Assistance/Innovation

- > Audi advanced key—keyless start, stop and entry⁵
- > Audi pre sense® basic⁶
- > Audi side assist and Audi pre sense® rear⁶
- > Audi drive select
- > Parking system plus with rear view camera (front and rear sensors)⁶

Exterior

- > 19" 5-spoke-V design wheels with all-season tires (Not shown. See Wheels page.)
- > Full LED headlights
- > LED taillights and rear fog lights

- > Power-adjustable, power-folding, auto-dimming, heated exterior side mirrors with memory
- > Heated windshield washer nozzles
- > Power tailgate with hands-free release
- > Adaptive rear spoiler
- > Integrated twin-trapezoidal exhaust outlets

Interior/Seating

- > Four-zone automatic climate control
- > Three-spoke multifunction steering wheel with shift paddles
- > Power tilt and telescopic adjustable steering column
- > Achat Gray Fine Grain Birch Wood inlays
- > Leather seating surfaces
- > Heated eight-way power front seats and four-way power lumbar adjustment and memory for driver
- > Split folding 60/40 rear seatbacks with pass-through
- > Sunroof

Safety

- > Driver and front passenger dual-stage airbags, front thorax side airbags, knee airbags, and Sideguard® head curtain airbags⁷
- > Front passenger occupant detection for airbags⁷
- > Lower Anchors and Tethers for Children (LATCH) in rear seats
- > Electronic Stability Control (ESC) with secondary collision brake assist and traction control (ASR)
- > Anti-lock Brake System (ABS) with Electronic Brake-pressure Distribution (EBD) and brake assist
- > Tire-pressure monitoring system
- > Electromechanical parking brake

A7 Premium Plus Stand-alone options

- > 20" 265/35 summer performance tires⁸
- > Rear-passenger thorax side airbags⁷
- > Dark Brown Walnut Wood inlays
- > Layered Walnut Wood inlays

A7 Premium Plus Available packages

20" Wheel package

- > 20" 5-spoke-W design wheels, gray/polished finish
- > 265/35 all-season tires⁸

Cold Weather package

- > Heated steering wheel
- > Heated rear seats

S line® Sport package

- > S line® exterior appearance
- > Sport suspension calibration
- > Audi Sport® 19" 7-double-spoke design wheels, Galvano Silver finish
- > 255/40 all-season tires⁸
- > Black cloth headliner

Driver Assistance package

- > Audi adaptive cruise control with stop & go
- > Audi active lane assist⁶
- > Audi pre sense® plus⁶
- > Corner view camera system
- > High-beam assistant

20" Black optic package

- > 20" 5-spoke-W design wheels, high-gloss black/polished finish
- > 265/35 all-season tires⁸
- > Gloss black Singleframe® grille
- > Gloss black trim around exterior side windows

Comfort Seating package

- > Heated and ventilated 18-way power individual-contour comfort front seats, including four-way power lumbar adjustment and massage function
- > Valcona leather seats
- > Front passenger seat memory

¹ MMI® navigation plus depends on signals from the worldwide Global Positioning Satellite network. The vehicle's electrical system and existing wireless and satellite technologies must be available and operating properly for the system to function. The system is designed to provide you with suggested routes in locating addresses, destinations and other points of interest. Changes in street names, construction zones, traffic flow, points of interest and other road system changes are beyond the control of Audi of America, Inc. Complete detailed mapping of lanes, roads, streets, toll roads, highways, etc., is not possible, therefore you may encounter discrepancies between the mapping and your actual location. Please rely on your individual judgment in determining whether or not to follow a suggested MMI® navigation plus route. Mapping updates are available at no charge for the first five map updates and are subsequently available on a subscription basis. ² Always pay careful attention to the road, and do not drive while distracted. Audi connect® should only be used when it is safe and appropriate. Audi connect services and features are optional, provided with the support of authorized affiliated and third party service providers, and may require additional subscriptions with separate terms and conditions. Available on select models. Certain services collect location information, see Terms of Service for information about how to disable and for other details. ³ SiriusXM® Satellite Radio and SiriusXM® Traffic subscriptions are sold separately or as a package after trial period and are continuous until you call SiriusXM® to cancel. See Customer Agreement for complete terms and more information at www.siriusxm.com. SiriusXM® Traffic service available in select markets. SiriusXM® U.S. Satellite Service available only to those in the 48 contiguous U.S.A., D.C. and Puerto Rico (with coverage limitations). ⁴ INRIX XD® Traffic is available on all Model Year 16+ A6, A7, TT and Q7 vehicles and is included with an Audi connect® subscription. Other models (allroad®, A3, A4, A5, A8, Q3 and Q5) include SiriusXM® Traffic for four years with the purchase of the vehicle. ⁵ Some Audi models are equipped with a keyless ignition feature. The details as to how the system works can vary, and Audi owners should consult their owner's literature or an authorized Audi dealer if they have further questions about the operation of this feature. Please note that Audi warns against leaving the vehicle unattended with the engine running, particularly in enclosed spaces. ⁶ The features discussed are not substitutes for attentive driving. Please see your owner's manual for further details and important limitations. ⁷ Airbags are supplemental restraints only and will not deploy in all crash circumstances. Always use safety belts and seat children only in the rear, using restraint systems appropriate for their size and age. ⁸ Tires are supplied and warranted by their manufacturer. High-performance tires are designed for optimum performance and handling in warm climates. They are not suitable for cold, snowy, or icy weather conditions. If you drive under those circumstances, you should equip your vehicle with all-season or winter tires, which offer better traction under those conditions. We suggest you use the recommended winter or all-season tire specified for your car or its equivalent. These high-performance tires also have a lower aspect ratio that aids performance and handling; however, in order to avoid tire, rim, or vehicle damage, it is important that the inflation pressure is regularly checked and maintained at optimum levels. Please also remember in making your selection that, while these tires deliver responsive handling, they may ride less comfortably and make more noise than other choices. Finally, these tires may wear more quickly than other choices.

A7

3.0T Prestige / 3.0T competition



2017 Audi A7 3.0T Prestige shown with optional 20" Wheel package.

A7 Prestige Featured highlights



In addition to or replaces highlighted features of A7 Premium Plus

Driver assistance/Innovation

- > Head-up display with navigation information

Exterior

- > Power soft-closing doors

Interior/Seating

- > Ambient LED interior lighting
- > Ventilated twelve-way power front seats, including four-way power lumbar adjustment

A7 3.0T competition Featured highlights



In addition to or replaces highlighted features of A7 Prestige

Engineering/Performance

- > 340-hp 3.0-liter TFSI® supercharged V6

Suspension/Chassis

- > Sport suspension calibration
- > quattro® sport differential
- > Red brake calipers (front and rear)

Exterior

- > S line® exterior appearance
- > Audi Sport® 20" 5-double-spoke design wheels, titanium-matte finish
- > 265/35 all-season tires¹
- > Gloss black Singleframe® grille
- > Black exterior mirror housings
- > Gloss black trim around exterior side windows

Interior/Seating

- > Three-spoke multifunction flat-bottom sport steering wheel with shift paddles (with S line® badging)
- > Brushed Aluminum inlays
- > Valcona leather seats with diamond stitching
- > Heated twelve-way power front sport-contoured seats, including four-way power lumbar adjustment
- > Leather-wrapped door armrests
- > Four-seat configuration
- > Black cloth headliner

A7 Prestige / A7 3.0T competition Stand-alone options

- > 20" 265/35 summer performance tires¹
- > Rear-passenger thorax side airbags²
- > Dark Brown Walnut Wood inlays (Prestige only)
- > Layered Walnut Wood inlays (Prestige only)
- > Piano Black Wood inlays (3.0T competition only)
- > Bang & Olufsen® Advanced Sound System with 15 speakers and 1,300 watts
- > Night vision assistant with pedestrian and large animal detection³

A7 Prestige / A7 3.0T competition Available packages

20" Wheel package (Prestige only)

- > 20" 5-spoke-W design wheels, gray/polished finish
- > 265/35 all-season tires¹

Cold Weather package

- > Heated steering wheel (deletes flat-bottom steering wheel on 3.0T competition model)
- > Heated rear seats

S line® Sport package (Prestige only)

- > S line® exterior appearance
- > Sport suspension calibration
- > Audi Sport® 19" 7-double-spoke design wheels, Galvano Silver finish
- > 255/40 all-season tires¹
- > Black cloth headliner

Driver Assistance package

- > Audi adaptive cruise control with stop & go
- > Audi active lane assist³
- > Audi pre sense® plus³
- > Corner view camera system
- > High-beam assistant

20" Black optic package (Prestige only)

- > 20" 5-spoke-W design wheels, high-gloss black/polished finish
- > 265/35 all-season tires¹
- > Gloss black Singleframe® grille
- > Gloss black trim around exterior side windows

Comfort Seating package (Prestige only)

- > Heated and ventilated 18-way power individual-contour comfort front seats, including four-way power lumbar adjustment and massage function
- > Valcona leather seats
- > Front passenger seat memory

¹ Tires are supplied and warranted by their manufacturer. High-performance tires are designed for optimum performance and handling in warm climates. They are not suitable for cold, snowy, or icy weather conditions. If you drive under those circumstances, you should equip your vehicle with all-season or winter tires, which offer better traction under those conditions. We suggest you use the recommended winter or all-season tire specified for your car or its equivalent. These high-performance tires also have a lower aspect ratio that aids performance and handling; however, in order to avoid tire, rim, or vehicle damage, it is important that the inflation pressure is regularly checked and maintained at optimum levels. Please also remember in making your selection that, while these tires deliver responsive handling, they may ride less comfortably and make more noise than other choices. Finally, these tires may wear more quickly than other choices. ² Airbags are supplemental restraints only and will not deploy in all crash circumstances. Always use safety belts and seat children only in the rear, using restraint systems appropriate for their size and age. ³ The features discussed are not substitutes for attentive driving. Please see your owner's manual for further details and important limitations.

S7

Premium Plus / Prestige



S7 Premium Plus Featured highlights



In addition to or replaces highlighted features of A7 Premium Plus

Engineering/Performance

- > 4.0-liter TFSI® turbocharged V8
- > 450 hp/406 lb-ft torque
- > cylinder on demand™ engine efficiency technology¹
- > Acceleration (0–60 mph) in 4.5 seconds
- > Top track speed of 155 mph²

Transmission/Suspension/Chassis

- > Seven-speed S tronic® dual-clutch transmission
- > Audi adaptive air suspension (with S model-specific tuning)
- > 15.7" ventilated front disc/14.0" ventilated rear disc brakes (with S7 badging)

Exterior

- > 19" 5-parallel-spoke S design wheels with 255/40 summer performance tires³
- > Platinum gray Singleframe® grille
- > S model-specific front/rear fasciae and side sills
- > Aluminum-optic front/rear twin blade fins
- > Aluminum-optic exterior side mirror housings
- > S model quad exhaust outlets

Interior/Seating

- > Three-spoke multifunction flat-bottom sport steering wheel with shift paddles (with S7 badging)
- > Stainless-steel door sill inlays (with S7 badging)
- > Valcona leather seats with contrast diamond stitching (with S7 model designation)
- > Twelve-way power front sport-contoured seats, including four-way power lumbar adjustment
- > Leather-wrapped door armrests
- > Four-seat configuration

S7 Prestige Featured highlights



In addition to or replaces highlighted features of S7 Premium Plus

Driver assistance/Innovation

- > Head-up display with navigation information

Exterior

- > 20" 5-parallel-spoke S design wheels with 265/35 summer performance tires³
- > Power soft-closing doors

Interior

- > Ambient LED interior lighting

S7 Stand-alone options

- > 20" 5-parallel-spoke S design wheels with 265/35 summer performance tires³ (S7 Premium Plus)
- > Rear-passenger thorax side airbags⁴
- > Carbon Atlas inlays
- > Layered Aluminum/Black Wood inlays
- > Black Alcantara® headliner
- > Bang & Olufsen® Advanced Sound System with 15 speakers and 1,300 watts (S7 Prestige only)
- > Night vision assistant with pedestrian and large animal detection (S7 Prestige only)⁵

S7 Available packages

Cold Weather package

- > Heated steering wheel (deletes flat-bottom steering wheel)
- > Heated rear seats

S7 Sport package

- > quattro® sport differential
- > Dynamic steering
- > Red brake calipers (front and rear)
- > Sport exhaust system with black outlets

Black optic package (S7 Premium Plus only)

- > Audi Sport® 20" 5-double-spoke design wheels, titanium-matte finish
- > 20" 265/35 summer performance tires³
- > Gloss black Singleframe® grille
- > Gloss black trim around exterior side windows
- > Body-colored exterior side mirror housings

21" Black optic package (S7 Prestige only)

- > Audi Sport® 21" 5-arm-rotor design wheels, titanium-matte finish
- > 21" 275/30 summer performance tires³
- > Gloss black Singleframe® grille
- > Gloss black trim around exterior side windows
- > Body-colored exterior side mirror housings

Driver Assistance package

- > Audi adaptive cruise control with stop & go
- > Audi active lane assist⁵
- > Audi pre sense® plus⁵
- > Corner view camera system
- > High-beam assistant

Comfort Seating package

- > Heated and ventilated 18-way power individual-contour comfort front seats, including four-way power lumbar adjustment and massage function
- > Valcona leather seats (without contrast diamond stitching)
- > Front passenger seat memory

Arras Red Audi design selection

- > Arras Red Valcona leather seats with contrast diamond stitching
- > Carbon Twill, Red inlays
- > Granite Gray contrast stitching

¹ 2017 EPA estimates not available at time of publication. See www.fueleconomy.gov for 2017 EPA estimates. Your mileage will vary and depends on several factors, including your driving habits and vehicle condition. ² Top track speed is electronically limited in the U.S. Always obey all speed and traffic laws. ³ Tires are supplied and warranted by their manufacturer. High-performance tires are designed for optimum performance and handling in warm climates. They are not suitable for cold, snowy, or icy weather conditions. If you drive under those circumstances, you should equip your vehicle with all-season or winter tires, which offer better traction under those conditions. We suggest you use the recommended winter or all-season tire specified for your car or its equivalent. These high-performance tires also have a lower aspect ratio that aids performance and handling; however, in order to avoid tire, rim, or vehicle damage, it is important that the inflation pressure is regularly checked and maintained at optimum levels. Please also remember in making your selection that, while these tires deliver responsive handling, they may ride less comfortably and make more noise than other choices. Finally, these tires may wear more quickly than other choices. ⁴ Airbags are supplemental restraints only and will not deploy in all crash circumstances. Always use safety belts and seat children only in the rear, using restraint systems appropriate for their size and age. ⁵ The features discussed are not substitutes for attentive driving. Please see your owner's manual for further details and important limitations.

RS 7

RS 7 / RS 7 performance



RS 7 Featured highlights



In addition to or replaces highlighted features of A7 Prestige

Engineering/Performance

- > 4.0-liter TFSI® turbocharged V8
- > 560 hp/516 lb-ft torque
- > cylinder on demand™ engine efficiency technology¹
- > Acceleration (0–60 mph) in 3.7 seconds
- > Top track speed of 174 mph²

Suspension/Chassis

- > quattro® sport differential
- > Audi adaptive air suspension (with RS model specific tuning)
- > 15.4 ventilated wave-design front disc/14.0 ventilated wave-design rear disc brakes
- > Dynamic steering

Exterior

- > RS exclusive Singleframe® grille with honeycomb mesh design
- > RS model unique front/rear fasciae and side sills
- > Aluminum-optic matte lower front bumper air intakes
- > Aluminum-optic matte exterior side mirror housings
- > Aluminum-matte trim around exterior side windows
- > RS model oval exhaust outlets

Interior/Seating

- > Three-spoke multifunction flat-bottom sport steering wheel with shift paddles (with RS 7 badging)
- > RS-design Carbon Fiber inlays

- > Stainless-steel door sill inlays (with RS 7 badging)
- > Valcona leather seats with contrast honeycomb stitching (with RS model designation)
- > Twelve-way power front sport-contoured seats, including four-way power lumbar adjustment
- > Leather-wrapped door armrests
- > Four-seat configuration

RS 7 performance Featured highlights



In addition to or replaces highlighted features of RS 7

Engineering/Performance

- > 605 hp/up to 553 lb-ft torque (with overboost)
- > Acceleration (0–60 mph) in 3.6 seconds
- > Top track speed of 190 mph²

Suspension/Chassis

- > DRC® suspension system (replaces Audi adaptive air suspension)
- > Audi ceramic brakes (front and rear)
- > Sport exhaust system with black outlets

Exterior

- > Audi Sport® 21" 5-double-arm design wheels, titanium-matte finish, with 275/30 summer performance tires³
- > Carbon front spoiler and rear diffuser
- > Carbon exterior side mirror housings
- > Gloss black Singleframe® grille
- > Gloss black trim around exterior side windows

RS 7 Stand-alone options

- > Audi Sport® 21" 5-spoke-blade design wheels with 275/30 summer performance tires³ (RS 7 only)
- > Audi Sport® 21" 5-spoke-blade design wheels, titanium-matte finish, with 275/30 summer performance tires³ (RS 7 only)
- > Audi Sport® 21" 5-spoke-blade design wheels, High-gloss black finish, with 275/30 summer performance tires³ (RS 7 only)
- > Audi Sport® 21" 5-double-arm design wheels, High-gloss black finish, with 275/30 summer performance tires³ (RS 7 performance only)
- > Singleframe® grille with “quattro” script
- > Rear-passenger thorax side airbags⁴
- > Red brake calipers (front and rear, RS 7 only)
- > Sport exhaust system with black outlets (RS 7)
- > Audi Sport® titanium exhaust system (RS 7 performance only)
- > Black Alcantara® headliner
- > Layered Aluminum/Black Wood inlays
- > Aluminum Race inlays
- > Bang & Olufsen® Advanced Sound System with 15 speakers and 1,300 watts
- > Night vision assistant with pedestrian and large animal detection⁵

RS 7 Available packages

Cold Weather package

- > Heated steering wheel (deletes flat-bottom steering wheel)
- > Heated rear seats

Driver Assistance package

- > Audi adaptive cruise control with stop & go
- > Audi active lane assist⁵
- > Audi pre sense® plus⁵
- > Corner view camera system
- > High-beam assistant

Comfort Seating package

- > Heated and ventilated 18-way power individual-contour comfort front seats, including four-way power lumbar adjustment and massage function
- > Valcona leather seats (without contrast honeycomb stitching)
- > Front passenger seat memory

Carbon optic package (RS 7 only)

- > Carbon front spoiler and rear diffuser
- > Gloss black exterior side mirror housings
- > Gloss black Singleframe® grille
- > Gloss black trim around exterior side windows

Audi design selection - RS 7 performance

- > Black leather/Alcantara® seats with Mercato Blue stitching
- > Carbon Twill, Blue inlays

¹ 2017 EPA estimates not available at time of publication. See www.fueleconomy.gov for 2017 EPA estimates. Your mileage will vary and depends on several factors, including your driving habits and vehicle condition. ² Top track speed is electronically limited in the U.S. Always obey all speed and traffic laws. ³ Tires are supplied and warranted by their manufacturer. High-performance tires are designed for optimum performance and handling in warm climates. They are not suitable for cold, snowy, or icy weather conditions. If you drive under those circumstances, you should equip your vehicle with all-season or winter tires, which offer better traction under those conditions. We suggest you use the recommended winter or all-season tire specified for your car or its equivalent. These high-performance tires also have a lower aspect ratio that aids performance and handling; however, in order to avoid tire, rim, or vehicle damage, it is important that the inflation pressure is regularly checked and maintained at optimum levels. Please also remember in making your selection that, while these tires deliver responsive handling, they may ride less comfortably and make more noise than other choices. Finally, these tires may wear more quickly than other choices. ⁴ Airbags are supplemental restraints only and will not deploy in all crash circumstances. Always use safety belts and seat children only in the rear, using restraint systems appropriate for their size and age. ⁵ The features discussed are not substitutes for attentive driving. Please see your owner's manual for further details and important limitations.

Technical Specifications

Engineering Performance	A7 3.0T	A7 3.0T competition	S7	RS 7	RS 7 performance
Engine type	Six-cylinder	Six-cylinder	Eight-cylinder	Eight-cylinder	Eight-cylinder
Engine block/Cylinder head	Aluminum-alloy	Aluminum-alloy	Aluminum-alloy	Aluminum-alloy	Aluminum-alloy
Displacement (cc)/Bore and stroke (mm)	2,995/84.5 x 89.0	2,995/84.5 x 89.0	3,993/84.5 x 89.0	3,993/84.5 x 89.0	3,993/84.5 x 89.0
Horsepower (@ rpm)	333 @ 5,300–6,500	340 @ 5,300–6,500	450 @ 5,800–6,400	560 @ 5,700–6,600	605 @ 6,100–6,800
Torque (lb-ft @ rpm)	325 @ 2,900–5,300	325 @ 2,900–5,300	406 @ 1,400–5,700	516 @ 1,750–5,500	553 @ 2,500–5,500 with overboost
Compression ratio	10.8:1	10.8:1	10.1:1	10.1:1	9.3:1
Valvetrain	24-valve DOHC with variable valve timing	24-valve DOHC with variable valve timing	32-valve DOHC with variable valve timing	32-valve DOHC with variable valve timing	32-valve DOHC with variable valve timing
Induction/Fuel injection	Supercharged/TFSI®	Supercharged/TFSI®	Turbocharged/TFSI®	Turbocharged/TFSI®	Turbocharged/TFSI®
cylinder on demand™ engine efficiency technology ¹	—	—	■	■	■
Start-stop efficiency system ¹	■	■	■	—	—
Acceleration (0–60 mph)	5.2 seconds	5.2 seconds	4.5 seconds	3.7 seconds	3.6 seconds
Top track speed ²	130 mph ²	130 mph ²	155 mph ²	174 mph ²	190 mph ²

Transmission Drivetrain	A7 3.0T	A7 3.0T competition	S7	RS 7	RS 7 performance
Eight-speed Tiptronic® automatic transmission with quattro® all-wheel drive	■	■	—	■	■
Seven-speed S tronic® dual-clutch transmission with quattro® all-wheel drive	—	—	■	—	—
Sport differential	—	■	Available	■	■

Body Suspension Chassis	A7 3.0T	A7 3.0T competition	S7	RS 7	RS 7 performance
Lightweight construction technology—aluminum exterior body panels and a steel chassis	■	■	■	■	■
Five-link front suspension	■	■	■	■	■
Trapezoidal-link rear suspension	■	■	■	■	■
Audi adaptive air suspension (with S or RS model-specific tuning)	—	—	■	■	—
DRC® sport suspension system (replaces Audi adaptive air suspension)	—	—	—	—	■
Sport suspension calibration	Available	■	■	■	■
Ventilated front disc/Ventilated rear disc brakes (in)	14.0/13.0	14.0/13.0	15.7/14.0	—	—
Ventilated wave-design front disc/Ventilated wave-design rear disc brakes (in)	—	—	—	15.4/14.0	—
Audi ceramic brakes	—	—	—	—	15.4/14.0
Red brake calipers	—	■	Available	Available	—
Electromechanical power steering system	■	■	■	■	■
Dynamic steering	—	—	Available	■	■
Steering ratio	15.9:1	15.9:1	15.9:1	13.0:1	13.0:1
Turning diameter, curb-to-curb (ft)	39.0	39.0	39.0	39.0	39.0

Exterior measurements	A7 3.0T	A7 3.0T competition	S7	RS 7	RS 7 performance
Wheelbase (in)	114.7	114.7	114.8	114.8	114.8
Length (in)	196.2	196.2	196.3	197.3	197.3
Height (in)	55.9	55.9	55.0	55.8	55.8
Overall width with mirrors (in)	84.2	84.2	84.2	84.2	84.2
Track (in, front/rear)	64.7/64.4	64.7/64.4	64.6/64.3	64.3/64.0	64.3/64.0
Curb weight (lb)	4,244	4,354	4,486	4,497	4,497
Drag coefficient (Cw)	0.28	0.28	0.30	0.30	0.30

Interior measurements	A7 3.0T	A7 3.0T competition	S7	RS 7	RS 7 performance
Head room with sunshade (in, front/rear)	36.9/36.6	36.9/36.6	36.9/36.6	36.9/36.6	36.9/36.6
Leg room (in, front/rear)	41.3/37.0	41.3/37.0	41.3/37.0	41.3/37.0	41.3/37.0
Shoulder room (in, front/rear)	57.2/55.9	57.2/55.9	57.2/55.9	57.2/55.9	57.2/55.9
Cargo volume (cu ft, rear seatbacks up)	24.5	24.5	24.5	24.5	24.5
Seating capacity	5	4	4	4	4

EPA mileage estimates Capacities Emissions	A7 3.0T	A7 3.0T competition	S7	RS 7	RS 7 performance
Tiptronic® automatic transmission (city/highway/combined) ¹	NA	NA	—	NA	NA
S tronic® dual-clutch transmission (city/highway/combined) ¹	—	—	NA	—	—
Engine oil (qt)	7.2	7.2	8.8	8.8	8.8
Fuel (gal)	19.8	19.8	19.8	19.8	19.8
Required fuel	Premium	Premium	Premium	Premium	Premium
Emissions rating	ULEV 125	ULEV 125	ULEV II	ULEV II	ULEV II

■ Standard — Not applicable NA Information not available at time of printing

¹ 2017 EPA estimates not available at time of publication. See www.fueleconomy.gov for 2017 EPA estimates. Your mileage will vary and depends on several factors, including your driving habits and vehicle condition. ² Top track speed is electronically limited in the U.S. Always obey all speed and traffic laws.

Wheels

19" 5-spoke-V design



Standard

Audi Sport® 19" 7-double-spoke design, Galvano Silver finish



A7 S line® Sport package

20" 5-spoke-W design, gray/polished finish



A7 20" Wheel package

20" 5-spoke-W design, High-gloss black/polished finish



A7 20" Black optic package

Audi Sport® 20" 5-double-spoke design, titanium-matte finish¹



A7 3.0T competition Standard, S7 Black optic package

19" 5-parallel-spoke S design



S7 Premium Plus Standard

20" 5-parallel-spoke S design



S7 Premium Plus Optional, S7 Prestige Standard

Audi Sport® 21" 5-arm-rotor design, titanium-matte finish



S7 Prestige 21" Black optic package

20" 7-twin-spoke forged design



RS 7 Standard

Audi Sport® 21" 5-spoke-blade design



RS 7 Optional

Audi Sport® 21" 5-spoke-blade design, titanium-matte finish



RS 7 Optional

Audi Sport® 21" 5-spoke-blade design, high-gloss black finish



RS 7 Optional

Audi Sport® 21" 5-double-arm design, titanium-matte finish



RS 7 performance Standard

Audi Sport® 21" 5-double-arm design, high-gloss black finish



RS 7 performance Optional

Exterior Colors

Brilliant Black



A7, A7 3.0T competition, S7

Nardo Gray



RS 7, RS 7 performance

Cuvée Silver metallic



A7

Glacier White metallic



A7, A7 3.0T competition, S7, RS 7, RS 7 performance

Java Brown metallic



A7

Moonlight Blue metallic



A7, A7 3.0T competition, S7

Oolong Gray metallic



A7, S7

Daytona Gray pearl



A7 3.0T competition, S7, RS 7, RS 7 performance

Sepang Blue pearl



S7, RS 7, RS 7 performance

Prism Silver crystal



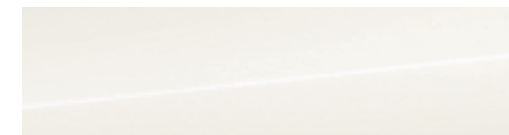
RS 7, RS 7 performance

Audi exclusive



Available on all vehicles in the A7 family

Ibis White



A7, A7 3.0T competition, S7

Ascari Blue metallic



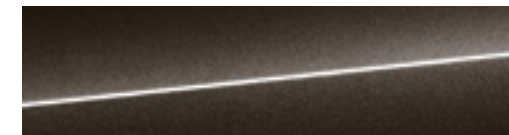
RS 7 performance

Florett Silver metallic



A7, A7 3.0T competition, S7, RS 7, RS 7 performance

Havana Black metallic



A7, S7

Matador Red metallic



A7

Mythos Black metallic



A7, A7 3.0T competition, S7, RS 7, RS 7 performance

Tornado Gray metallic



A7, A7 3.0T competition, S7

Misano Red pearl



A7 3.0T competition, S7, RS 7, RS 7 performance

Panther Black crystal



RS 7, RS 7 performance

Daytona Gray matte



RS 7, RS 7 performance

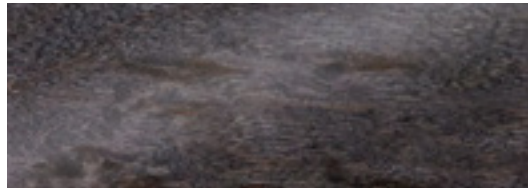
1 2017 A7 3.0T competition model shown.

Exterior color options will vary based on model, trim level and package combination. See your dealer for details.

Interior Inlays



Achat Gray Fine Grain Birch Wood



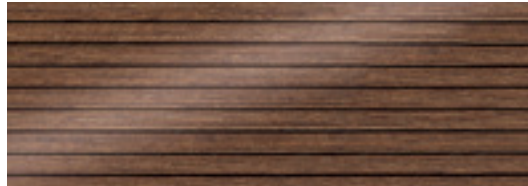
A7, S7 Standard / A7 3.0T competition Optional

Dark Brown Walnut Wood



A7 Optional

Layered Walnut Wood



A7 Optional

Brushed Aluminum



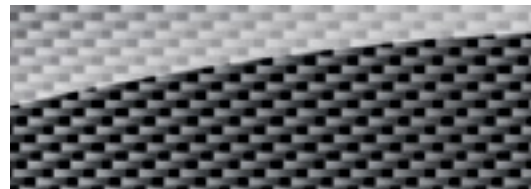
A7 3.0T competition Standard

Piano Black Wood



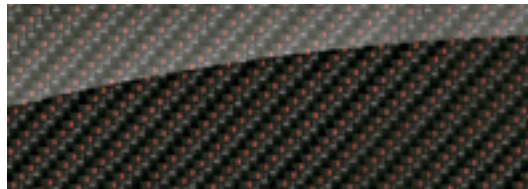
A7 3.0T competition Optional

Carbon Atlas



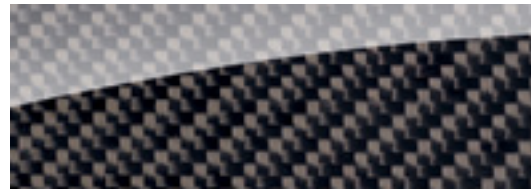
S7 Optional

Carbon Twill, Red



S7 Arras Red Audi design selection

RS-design Carbon Fiber



RS 7, RS 7 performance Standard

Layered Aluminum/Black Wood



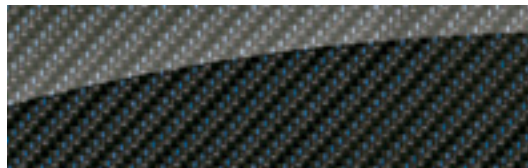
S7, RS 7, RS 7 performance Optional

Aluminum Race



RS 7, RS 7 performance Optional

Carbon Twill, Blue



RS 7 performance Audi design selection

Audi exclusive



Available on all vehicles in the A7 family

Interior Colors and Seat Selections

Black leather



A7 Standard Seat

Nougat Brown leather



A7 Standard Seat

Flint Gray leather



A7 Standard Seat

Atlas Beige leather



A7 Standard Seat

Black Perforated leather



A7 Ventilated Seat

Nougat Brown Perforated leather



A7 Ventilated Seat

Flint Gray Perforated leather



A7 Ventilated Seat

Atlas Beige Perforated leather



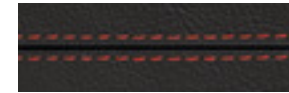
A7 Ventilated Seat

Black Valcona leather with diamond stitching



A7 3.0T competition Sport Seat

Black Valcona leather with Korso Red contrast diamond stitching



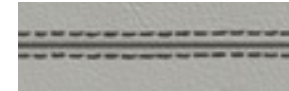
A7 3.0T competition Sport Seat

Black Valcona leather with Silver contrast diamond stitching



S7 Sport Seat

Lunar Silver Valcona leather with Graphite Gray contrast diamond stitching



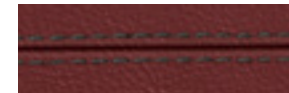
S7 Sport Seat

Lunar Silver Valcona leather with Dark Silver diamond stitching



A7 3.0T competition Sport Seat

Arras Red Valcona leather with Granite Gray contrast diamond stitching



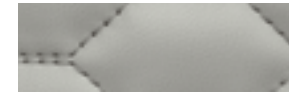
S7 Arras Red Audi design selection Sport Seat

Black Valcona leather with Rock Gray contrast honeycomb stitching



RS 7, RS 7 performance Sport Seat

Lunar Silver Valcona leather with Rock Gray contrast honeycomb stitching



RS 7, RS 7 performance Sport Seat

Black leather/Alcantara® with Mercato Blue contrast honeycomb stitching



RS 7 performance Audi design selection Sport Seat

Black Perforated Valcona leather



A7, S7, RS 7, RS 7 performance Individual Contour Seat

Nougat Brown Perforated Valcona leather



A7 Individual Contour Seat

Flint Gray Perforated Valcona leather



A7, S7 Individual Contour Seat

Atlas Beige Perforated Valcona leather



A7 Individual Contour Seat

Audi exclusive



Available on all vehicles in the A7 family



A7 Standard Seat



A7 Ventilated Seat



A7 3.0T competition/S7 Sport Seat¹



RS 7 Sport Seat



Individual Contour Seat



A7
2017

Audi of America
Audiusa.com
Facebook.com/Audi

Note: A word about this brochure. Audi of America, Inc., believes the specifications in this brochure to be correct at the time of printing. However, specifications, standard equipment, options, fabrics, and colors are subject to change without notice. Some equipment may be unavailable when your vehicle is built. Please ask your dealer for advice concerning current availability of standard and optional equipment, and your dealer will verify that your vehicle will include the equipment you ordered. Vehicles in this brochure are shown with optional equipment. See your dealer for complete details on the Audi New Vehicle Limited Warranty, twelve-year limited warranty against corrosion perforation, and Audi 24/7 Roadside Assistance. (Roadside assistance coverage provided by Road America in the U.S. Certain conditions apply; see your dealer for details.) Tires supplied by various manufacturers. "Audi," all model names, "Audi connect," "Audi pre sense," "Audi Sport," "cylinder on demand," "DRC," "MMI," "quattro," "S line," "S tronic," "Sideguard," "Singleframe," "TFSI," "Tiptronic," and the four rings logo are trademarks or registered trademarks of AUDI AG. "Alcantara" is a registered trademark of Alcantara S.p.A. "Apple," "Apple CarPlay," "Apple Music," "App Store," "iPhone" and "Siri" are trademarks or registered trademarks of Apple Inc. "AudioPilot" and "BOSE" are registered trademarks of the BOSE Corporation. "Bang & Olufsen" is a registered trademark of Bang & Olufsen. The BLUETOOTH word mark and logos are owned by the Bluetooth SIG, Inc., and any use of such marks by AUDI AG is under license. "Facebook" is a registered trademark of Facebook, Inc. "Google," "Google Earth," "Google Maps" and "Google Play" are trademarks of Google Inc. © 2016 Google Inc. All rights reserved. "HD Radio" and the HD Radio logo are proprietary trademarks of iBiquity Digital Corporation. "HomeLink" is a registered trademark of Gentex Corporation. "INRIX XD" is a registered trademark of INRIX, Inc. "Oakley" is a registered trademark of Oakley, Inc. "SiriusXM" and all related marks and logos are registered trademarks of Sirius XM Radio Inc. and its subsidiaries. "Spyder" is a registered trademark of Spyder Active Sports, Inc. "Wi-Fi" is a registered trademark of the Wi-Fi Alliance. All other trademarks are the property of their respective owners. Some European models shown. Some features may not be available at time of order.