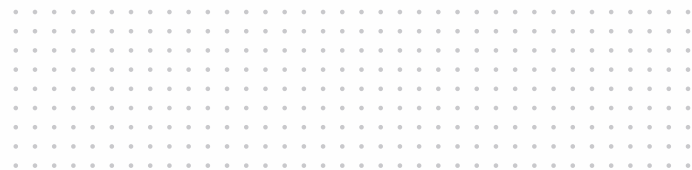




2011 GMC ACADIA

GMC ACADIA IS ENGINEERED WITH THE UNDERSTANDING THAT LIFE IS UNPREDICTABLE. WITH FLEXIBLE INTERIOR SPACE, CLASS-LEADING CARGO CAPACITY, BLUETOOTH^{®1} CONNECTIVITY AND ONSTAR,² IT'S DESIGNED TO HELP YOU TAKE CHARGE OF YOUR DAY, WHATEVER DIRECTION IT MAY TAKE. THIS IS ACADIA. A PREMIUM CROSSOVER THAT CAN TAKE ON ANY CHALLENGE YOU SEND ITS WAY WITH CONFIDENCE. IT'S WHAT HAPPENS WHEN YOU NEVER SAY NEVER.

ENGINEERED TO MAKE IT EASY.



¹Go to gm.com/bluetooth to find out which Bluetooth phones are compatible with the vehicle. ²Visit onstar.com for details and system limitations.



ACADIA SLT IN RED JEWEL TINTCOAT (L)
ACADIA DENALI IN WHITE DIAMOND TRICOAT (R)
BOTH SHOWN WITH AVAILABLE EQUIPMENT

ACADIA DENALI

INTRODUCING THE DENALI OF CROSSOVERS.

This year, Acadia joins the exclusive Denali family, and the results are striking. Acadia Denali features a sleek appearance and unique exterior styling cues. Premium materials, exceptional interior acoustics, along with purposeful technology and convenience features transform its comfortable cabin into your own personal retreat.

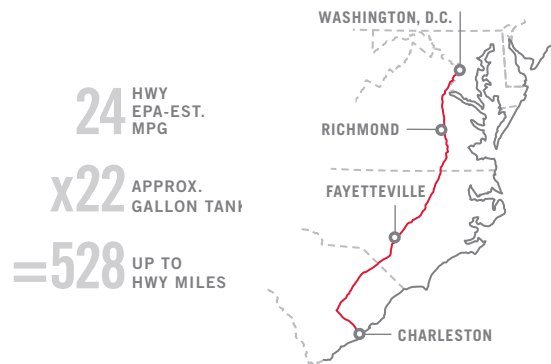
REFINED APPEARANCE

Acadia Denali is designed with a distinctive look and feel that commands attention. Outside, a honeycomb grille, streamlined bodyside moldings with chrome accents, body-color rocker panels, dual chrome exhaust tips and 20-inch two-tone chrome-clad wheels accentuate its athletic stance. Inside, heated and cooled front leather seating surfaces, mahogany wood steering wheel, plus interior wood tones and chrome accents emphasize luxury and refinement.

UNMATCHED FLEXIBILITY

Acadia Denali features class-leading cargo capability and seating for up to eight passengers. Its second- and third-row seats can fold down to create up to 116.9 cubic feet¹ of cargo space behind the first row, helping you to accommodate changing combinations of passengers and cargo with ease.

FIGURE 1: ADVANCED ENGINE TECHNOLOGY



Direct-injection technology delivers responsive engine power and gives Acadia Denali better highway fuel economy² than any eight-passenger SUV. It also gives Acadia Denali a highway range of up to 528 miles, so you can spend more time on the road, and less time at the pump.

Unless otherwise noted, all competitive claims based on 2010 GM Mid-utility Crossover segment and latest available information at the time of printing.

¹Cargo and load capacity limited by weight and distribution. ²FWD models 24 hwy EPA-estimated mpg.





ACADIA DENALI IN WHITE DIAMOND TRICOAT SHOWN WITH AVAILABLE EQUIPMENT

DENALI INTERIOR

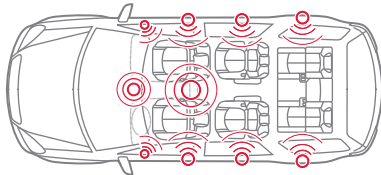
A CROSSOVER-ACHIEVER.

Acadia Denali is equipped to give you comfort and control of your driving environment. With standard features including a class-exclusive advanced Head-Up Display, Bose® premium sound system and heated and cooled front seating, it's engineered to stand apart from other crossovers, and everything you'd expect from GMC.

EXCEPTIONAL INTERIOR ACOUSTICS

Acadia Denali uses laminated glass and the strategic application of liquid-applied sound deadeners to reduce road and wind noise to ensure a peaceful commute.

FIGURE 2: BOSE SOUND SYSTEM WITH AVAILABLE SURROUND SOUND



For optimum listening pleasure, the Bose sound system for Acadia Denali features 10 speakers strategically located throughout the cabin. Available digital 5.1 surround technology unlocks the benefit of digital recordings to make music sound full and detailed.

YOUR PORTAL TO LISTENING ENJOYMENT

To personalize your listening experience, a USB port¹ is included on all Acadia Denali and SLT models. Simply plug in your iPod® or MP3 player to see your play lists on the audio display, make a selection and play your favorites using the audio system controls.

FIGURE 3: CLASS-EXCLUSIVE HEAD-UP DISPLAY (HUD)



Acadia Denali projects important driving information at eye level, so you can monitor speed and other functions without looking down. This includes speedometer and RPM readings, turn signal and high-beam indicators, transmission position, outside air temperature and, when equipped with a navigation radio, Turn-by-Turn Navigation information.

HEATED AND COOLED SEATING

Acadia Denali is equipped with perforated leather-appointed front seats designed to keep you comfortable as weather conditions change. They can warm you up with built-in heating elements, or cool you with air that flows through the perforated leather seating surfaces.

ONE-TOUCH NAVIGATION

With advanced mapping capabilities in 2-D or 3-D view, the available DVD-based Touch-Screen Navigation System² will help lead you to your destination. It includes 3 months of XM NavTraffic³ giving you construction, road closure and accident reports in real-time, to help you avoid any unexpected tie-ups and arrive on time.

¹Not compatible with all devices.

²Map coverage for Puerto Rico and the Virgin Islands available on separate disc. Coverage not available for portions of Canada.

³Required XM Radio and XM NavTraffic monthly subscriptions sold separately by XM after trial period. XM NavTraffic only available in select markets. For more information, visit xmradio.com/navtraffic.



ACADIA DENALI LIGHT TITANIUM INTERIOR SHOWN WITH AVAILABLE EQUIPMENT



ACADIA DENALI LIGHT TITANIUM INTERIOR SHOWN WITH AVAILABLE EQUIPMENT



ACADIA SLT LIGHT TITANIUM INTERIOR SHOWN WITH AVAILABLE EQUIPMENT

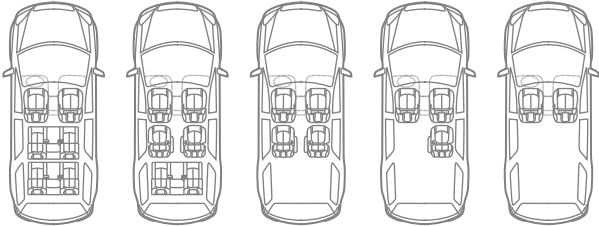


SEATING CONFIGURATIONS

SEATING FOR EIGHT WITH ROOM TO STRETCH.

Not only does Acadia seat eight passengers, it accommodates them with generous leg room, shoulder room and head room. Its spacious interior includes flexible seating arrangements and clever storage options to create a comfortable environment for you, and up to seven of your friends.

FIGURE 4: SEATING CONFIGURATION



OPEN FLOOR PLAN

Acadia's interior reflects the very notion of what personal space should be—comfortable and inviting. Stadium seating, plus noticeable shoulder room in the second and third rows give passengers a sense of autonomy usually reserved for the front seat. And to keep things organized, Acadia offers multiple storage spaces, including an available second-row center console.

FIGURE 5: INTELLIGENT SEATING

Offering the convenience of one-handed operation, SmartSlide seating allows passengers to enter or exit Acadia with ease. With the seatback in the forward position and the seat cushion folded, the system gives second-row seats up to 18 inches of forward travel for generous access to the third row.



TRI-ZONE AUTOMATIC CLIMATE CONTROL

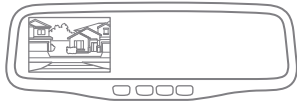
This available system gives front passengers the freedom to personalize their own heat and air conditioning settings up to 30 degrees apart, and includes separate controls for the second and third rows, ensuring the comfort of all passengers.

TECHNOLOGY

BUILT-INTUITION.

Acadia provides you with a wealth of purposeful technologies designed to help keep you in touch and in charge of your day. Clever innovations, including available hands-free calling and an available Rearview Camera System, can help you efficiently respond to the events of your day, and still take it all in stride.

FIGURE 6: AVAILABLE REARVIEW CAMERA SYSTEM



As soon as you shift into reverse, a view of what's behind you is displayed in a portion of the rearview mirror, to help you navigate a driveway or parking space more effectively (not available on SL models). On Denali and SLT models, when you choose Touch-Screen Navigation, the camera display is integrated into the NAV screen.

BLUETOOTH CONNECTIVITY¹

Thanks to available Bluetooth connectivity, you can sync up your Bluetooth mobile device with Acadia for in-vehicle, hands-free calling. Steering-wheel-mounted controls help you start a call and control volume, then dial by voice and listen to your call through the audio system. Now you can stay in touch without ever taking your hands from the wheel.

XM SATELLITE RADIO²

More entertainment. More information. More choices. XM delivers outstanding sound quality and over 170 channels of the best in music, news, sports, comedy, talk, XM Instant Traffic and Weather and more, coast to coast. Three trial months of service. See page 25 for details.

REAR-SEAT DVD ENTERTAINMENT SYSTEM

This available system provides a variety of audio, video and gaming options designed to entertain rear-seat passengers while traveling. It includes a DVD player with remote control, overhead display and two sets of wireless infrared headphones, plus audio and video input jacks that are compatible with most popular gaming systems.

¹Go to gm.com/bluetooth to find out which Bluetooth phones are compatible with the vehicle. ²XM Radio requires a subscription, sold separately by XM after the first 90 days. XM Radio U.S. service only available in the 48 contiguous United States and the District of Columbia. For more information, visit gm.xmradio.com.





Full Map

XM Preview

Traffic

3:25

NAV

DEST

RPT

FAV

DVD

AUDIO

MENU

▶ SEEK

◀ SEEK

+

Mark

No Street Name

POI

-

DOLBY DIGITAL

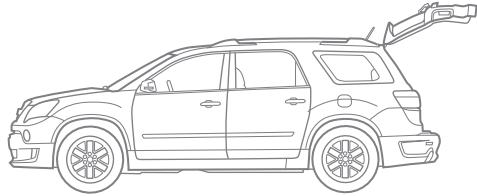
dts

INTERIOR FLEXIBILITY

ACCESS CAPACITY.

Acadia offers exceptional cargo capacity. It is engineered to provide you with more room behind the front row than any other vehicle in its class, and it's equipped for comfortable, convenient access to all three rows.

FIGURE 7: POWER LIFTGATE

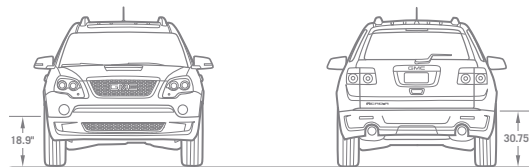


For effortless loading and unloading, the available power liftgate (not available on SL models) gives you push-button remote access to the rear cargo area. Electronic obstacle detection helps prevent damage to the liftgate.

KEYLESS REMOTE START

With the simple press of a button, you can start Acadia from nearly 200 feet away, so it's ready to go as soon as you are. Once started, its climate control system adjusts to colder or hotter outside temperatures, automatically. In colder weather, the rear window defogger and heated mirrors are also activated. Remote start is available on SL, and standard on all other Acadia models.

FIGURE 8: LOW STEP-IN AND LIFT-OVER HEIGHT



One of the benefits of Acadia's body-frame integral design is that it creates a low step-in and lift-over height, making Acadia easy to enter, exit and load.





ACADIA SLT IN RED JEWEL TINTCOAT SHOWN WITH AVAILABLE EQUIPMENT





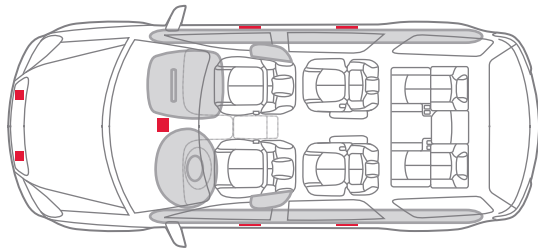
ACADIA SLT IN QUICKSILVER METALLIC SHOWN WITH AVAILABLE EQUIPMENT

SAFETY AND SECURITY

HELP WHEN YOU NEED IT MOST.

Acadia offers a comprehensive system of protection to give you help when you need it most. It's engineered to assist you before a crash, with advanced chassis control technology (see page 18 for details), during a crash, when every second counts, and thanks to OnStar, after a crash, even if you can't ask for help yourself.

FIGURE 9: SIX AIR BAGS AND PASSENGER SENSING SYSTEM



To reduce the risk of injury, Acadia is equipped with six air bags:¹ two front dual-stage air bags and two side-impact air bags for the driver and front-seat passenger, and head curtain side air bags with rollover protection for passengers in outboard seating positions. The front passenger air bag features a Passenger Sensing System. The system uses a sensor within the front passenger seat to detect the weight of an occupant. Under a certain weight, the system automatically turns off the air bag.

SAFETY CAGE MANAGEMENT SYSTEM

To help preserve occupant space during a crash, Acadia's safety cage is engineered to absorb and channel crash energy. Crush zones at the front and rear of Acadia are designed to collapse on impact, allowing them to absorb energy and help keep the safety cage intact.

ONSTAR AUTOMATIC CRASH RESPONSE²

With OnStar, you get the help you need, even if you can't ask for it. In a crash, OnStar can call for help, send your GPS location to emergency services and can even stay on the line until help arrives. For more details, see page 25 or visit onstar.com.

¹Air bag inflation can cause severe injury or death to anyone too close to the air bag when it deploys. Always use safety belts and the correct restraint for your child's age and size. Even in vehicles equipped with the Passenger Sensing System, children are safer when properly secured in a rear seat in the appropriate infant, child or booster seat. Never place a rear-facing infant restraint in the front seat of any vehicle equipped with a passenger air bag. See the Owner's Manual and child safety seat instructions for more safety information. ²Visit onstar.com for details and system limitations.



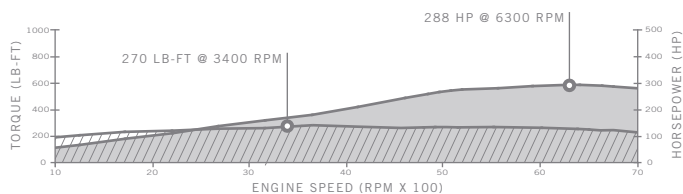


POWER AND PERFORMANCE

PROOF THAT POWER AND EFFICIENCY CAN COEXIST.

When it comes to performance, Acadia does not compromise. It delivers unsurpassed standard torque, more standard V-6 horsepower than any competitor in its class and better highway fuel economy than any other eight-passenger SUV.¹

FIGURE 10: STANDARD 3.6L DIRECT-INJECTED V-6



EFFICIENT POWER

Acadia has a 3.6L V-6 engine that delivers 288 horsepower and 270 lb-ft of torque, performance you'll notice immediately during acceleration or merging onto a busy highway. Its direct-injection technology improves efficiency and reduces emissions, and at 24 mpg, gives Acadia better highway fuel economy than any other eight-passenger SUV.¹

ADVANCED 6-SPEED AUTOMATIC TRANSMISSION

It's the transmission that makes the most out of Acadia's V-6 engine power. It features a wide ratio spread with a very low first gear for brisk acceleration from a stop, and a very high sixth gear overdrive ratio that improves highway fuel economy. The transmission can also change gears as driving conditions change to help reduce brake wear and give you more control on downhill slopes.

ONSTAR VEHICLE DIAGNOSTICS²

With the help of OnStar, Acadia can automatically send you a monthly e-mail summary of hundreds of checks of your engine, transmission and antilock brakes, along with important maintenance tips. Services include OnStar Vehicle Diagnostics, a powerfully simple way to know what your vehicle's key operating systems need. A six-month trial subscription to OnStar Directions & Connections² is one of the benefits of Acadia ownership.

¹EPA-estimated mpg (FWD) 24 hwy. ²Visit onstar.com for details and system limitations. Diagnostic capabilities vary by model.





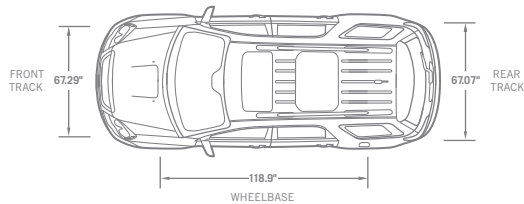
ACADIA SLT IN RED JEWEL TINTCOAT SHOWN WITH AVAILABLE EQUIPMENT

RIDE AND HANDLING

ENGINEERED TO STAY THE COURSE.

Acadia's suspension, braking and stability control systems work together to manage the most challenging driving conditions, so you can take on your commute smoothly, with confidence.

FIGURE 11: WIDE FRONT/REAR TRACKS/LONG WHEELBASE



Acadia has a low center of gravity and a long and wide footprint for a secure stance.

OUTSTANDING RIDE AND HANDLING CHARACTERISTICS

Thanks to a MacPherson-strut front and a linked H-arm rear suspension system, Acadia is confident, responsive and precise. The rear suspension mounts on an isolated cross-member subframe, which helps reduce cabin noise.

AVAILABLE ALL-WHEEL DRIVE (AWD)

An available electronically controlled on-demand AWD system helps Acadia offer outstanding ride and handling. It constantly monitors and adjusts torque quickly and seamlessly between front and rear wheels as necessary. At 16 city/23 hwy EPA-estimated mpg, it also offers outstanding fuel economy.

STABILITY CONTROL

Acadia has a StabiliTrak electronic stability control system that can sense vehicle speed, brake pressure, lateral acceleration, turning and even the position of your steering wheel to help you keep on track. The system feeds this data into an onboard computer, then adjusts engine speed and brake pressure to any individual wheel to improve safety, stability and control in most driving conditions.

TIRE PRESSURE MONITORING SYSTEM¹

The Tire Pressure Monitoring System is one of many tools designed to measure and monitor Acadia's mechanical systems. It's advanced technology that keeps track of tire pressure and alerts you to low pressure through the Driver Information Center—indicating exactly which tire is low.

¹Does not monitor spare tire.





ACADIA SLT IN CARBON BLACK METALLIC SHOWN WITH AVAILABLE EQUIPMENT

STANDARD AND AVAILABLE FEATURES/ACADIA

TRIM LEVELS	SL	SLE	SLT-1	SLT-2	DENALI
-------------	----	-----	-------	-------	--------

MECHANICAL

DISC BRAKES 4-wheel antilock, 4-wheel disc	S	S	S	S	S
DRIVETRAIN Front-wheel drive	S	S	S	S	S
All-wheel drive	A	A	A	A	A
ENGINE 3.6L direct-injection V-6 VVT; 288 hp and 270 lb-ft of torque	S	S	S	S	S
ENGINE BLOCK HEATER	A	A	A	A	A
ENGINE OIL LIFE INDICATOR	S	S	S	S	S
STABILITRAK Stability control system and traction control	S	S	S	S	S
SUSPENSION Front and rear independent	S	S	S	S	S
TRAILERING EQUIPMENT Includes heavy-duty cooling and factory-installed trailer hitch	A	A	A	A	S
TRANSMISSION 6-speed automatic 6T75 electronically controlled with overdrive	S	S	S	S	S

SEATING

SEAT TRIM Premium cloth	S	S	—	—	—
Leather-appointed, first and second rows. Includes heated front seats.	—	—	S	S	—
Perforated, leather seating surfaces, first and second rows. Includes heated and cooled front seats.	—	—	—	A	S
SEATS 4-way driver (includes lumbar control) and 2-way front passenger buckets, manual adjustment	S	—	—	—	—
8-way power driver with power recline and lumbar control and 2-way power front passenger seat with manual recline and lumbar control	—	S	S	—	—
8-way driver and 4-way front passenger power with power recline and lumbar control, 2-position memory for driver's seat and outside rearview mirrors	—	—	—	S	S
Heated front seats	—	A	S	S	—
Heated and cooled front seats. Available with perforated leather seating surfaces.	—	—	—	A	S
60/40 split-folding 3-passenger third-row bench	S	S	S	S	S
8-passenger seating (2-3-3 configuration). Includes second-row 60/40 split flat-folding bench seat with SmartSlide.	S	A	A	A	A
7-passenger seating (2-2-3 configuration). Includes second-row flat-folding captain's chairs with SmartSlide.	—	S	S	S	S

INSTRUMENTATION AND CONTROLS

ELECTRONIC CRUISE CONTROL	S	S	S	S	S
HEAD-UP DISPLAY Includes digital multi-function readouts. Requires Technology Package on SLT-2.	—	—	—	A	S

TRIM LEVELS	SL	SLE	SLT-1	SLT-2	DENALI
-------------	----	-----	-------	-------	--------

INSTRUMENTATION 5-gauge, outside temperature indicator and Driver Information Center	S	S	S	S	S
Enhanced Driver Information Center includes outside temperature indicator, digital compass display, trip odometer, oil life, average speed, distance and time to go, average fuel used, tire pressure monitor and help menu	—	—	S	S	S
REARVIEW CAMERA SYSTEM Integrated into rearview mirror. If Touch-Screen Navigation is ordered, camera will be integrated into the navigation display.	—	S	S	S	S
STEERING WHEEL Tilt-Wheel and telescopic Comfort grip	S	S	S	S	S
Leather-wrapped with redundant audio controls	A	S	S	S	—
Leather-wrapped with mahogany wood trim and audio controls	—	—	—	—	S
ULTRASONIC REAR PARKING ASSIST	—	S	S	S	S

INTERIOR DETAILS

CARGO STORAGE Under rear floor	S	S	S	S	S
CLIMATE CONTROL Air conditioning, single-zone manual	S	S	—	—	—
Tri-zone air conditioning with individual climate settings for driver and right-front passenger and second-/third-row controls. On SLE models, requires Rear-Seat Entertainment System.	—	A	S	S	S
Defogger, rear window electric	S	S	S	S	S
CONSOLES Overhead console with map lights. On SLT-1, SLT-2 and Denali models, includes Universal Home Remote.	S	S	S	S	S
Front center console with storage	S	S	S	S	S
Second-row center console. Requires 7-passenger seating.	—	—	A	A	A
CUPHOLDERS 10	S	S	S	S	S
FLOOR MATS Color-keyed, carpeted for all 3 rows, removable	S	S	S	S	—
Premium, Denali specific, carpeted for all three rows	—	—	—	—	S
INSULATION Acoustical package	S	S	S	S	—
Premium acoustical package	—	—	—	—	S
MIRRORS Inside rearview, manual	S	—	—	—	—
Inside rearview, auto-dimming	—	S	S	S	S
POWER DOOR LOCKS	S	S	S	S	S
POWER OUTLET 3-prong, 115-volt, household-style	—	A	A	A	A
POWER WINDOWS With driver express-down	S	S	S	—	—
With driver express-up and -down and passenger express-down	—	—	—	S	S

TRIM LEVELS	SL	SLE	SLT-1	SLT-2	DENALI
-------------	----	-----	-------	-------	--------

REMOTE KEYLESS ENTRY Programmable with 2 transmitters, panic button and extended range	S	S	S	S	S
REMOTE VEHICLE START	A	S	S	S	S
SILL PLATE Illuminated	—	—	—	—	S
SUNROOF 2-panel Dual Skyscape. Tilt-sliding, front and fixed rear with sunscreen.	—	A	A	A	S
TECHNOLOGY PACKAGE Includes Head-Up Display, cargo area audio system controls and High Intensity Discharge (HID) projector low-beam headlamps	—	—	—	A	S
UNIVERSAL HOME REMOTE 3-channel programmable. Includes garage door opener.	—	—	S	S	S

ENTERTAINMENT/COMMUNICATION/NAVIGATION

AM/FM STEREO With MP3-compatible CD player, seek-and-scan, digital clock, auto-tone control, Radio Data System (RDS), ¹ speed-compensated volume, 6-speaker system and TheftLock	S	S	—	—	—
With MP3-compatible CD player, seek-and-scan, digital clock, auto-tone control, RDS, ¹ speed-compensated volume, TheftLock, auxiliary input jack, USB port ² receptacle and 10-speaker Bose® sound system with subwoofer	—	—	S	S	S
TOUCH-SCREEN NAVIGATION ³ DVD-based with AM/FM MP3-compatible CD player and 7" touch screen, seek-and-scan, digital clock, auto-tone control, RDS, ¹ speed-compensated volume, rear audio system controls, auxiliary input jack, headphone jacks, USB port ² receptacle and 10-speaker Bose sound system. Includes Rearview Camera System and 3 months of XM NavTraffic. ⁴ Not available with Rear-Seat Entertainment System.	—	—	A	A	A
REAR-SEAT ENTERTAINMENT SYSTEM Includes DVD player with remote control, overhead display, 2 sets of 2-channel wireless infrared headphones, auxiliary audio/video input jacks, 10-speaker Bose sound system supporting discrete 5.1 recorded material and AM/FM stereo with MP3-compatible CD/DVD player. On SLE, includes rear audio controls and tri-zone automatic climate control. On SLT-1, SLT-2 and Denali models, available with Touch-Screen Navigation.	—	A	A	A	A
AUDIO 10-speaker Bose sound system with Bose Nd® Richbass® woofer	—	—	S	S	S
With 5.1 Surround Sound. Requires Rear-Seat Entertainment System.	—	A	A	A	A
Audio controls located in rear cargo area. Requires Technology Package on SLT-2.	—	—	—	A	S
XM SATELLITE RADIO ⁵ Standard on all Acadia sound systems, including 3 trial months of service. See page 25 for details.	S	S	S	S	S
XM NAVTRAFFIC ⁴ See page 25 for details.	—	—	A	A	A

STANDARD AND AVAILABLE FEATURES/ACADIA

TRIM LEVELS	SL	SLE	SLT-1	SLT-2	DENALI
BLUETOOTH® For phone, personal cell-phone connectivity to vehicle audio system and HMI	A	S	S	S	S
ONSTAR® Six months of Directions & Connections plan. See page 25 for details.	S	S	S	S	S
EXTERIOR STYLING AND FUNCTIONALITY					
DOOR HANDLES Chrome. On SL and SLE models, includes black beltline molding; on SLT-1, SLT-2 and Denali models, includes bright beltline molding.	S	S	S	S	S
EXHAUST Double dual chrome	S	S	S	S	—
Dual with chrome tips	—	—	—	—	S
FASCIAS Front and rear body-color, Denali-specific	—	—	—	—	S
GLASS Solar-Ray deep-tinted except light-tinted glass on windshield and driver and front-passenger-side glass	S	S	S	S	S
GRILLE Chrome upper and lower	—	—	—	—	S
LIGHTS Dual halogen projector lamp headlamps	S	S	S	S	S
HID headlamps. Requires Technology Package on SLT-2.	—	—	—	A	S
Daytime Running Lamps	S	S	S	S	S
Front halogen fog lamps	—	S	S	S	S
MOLDINGS Black bodyside	S	—	—	—	—
Body-color bodyside	A	S	S	S	—
Denali specific, body-color bodyside with chrome insert and rocker molding	—	—	—	—	S
OUTSIDE MIRRORS Power-adjustable, manual-folding, black	S	S	—	—	—
Heated, power-adjustable, manual-folding with integrated turn signal indicators, body-color	—	—	S	—	—
Heated, power-adjustable power-folding and driver-side auto-dimming, with integrated turn signal indicators and driver-side memory, body-color	—	—	—	S	S
REAR LIFTGATE Rear manual	S	—	—	—	—
Power	—	S	S	S	S
WHEEL FLARES Body-color, front and rear	—	—	—	—	S
WIPERS Front and rear intermittent with washers	S	S	S	S	S
ROOF RAILS Brushed aluminum, longitudinal	S	S	S	S	S
HIT THE ROAD PACKAGE Includes chrome assist steps, Roof Rack Cross Rail Package and custom-molded splash guards. See page 22, or go to gmaccessorieszone.com for details.	A	A	A	A	A

SAFETY AND SECURITY

	SL	SLE	SLT-1	SLT-2	DENALI
AIR BAG® Includes driver and right-front passenger frontal air bags with Passenger Sensing System, front-row side-impact air bags and head curtain side-impact air bags with rollover protection in all three rows	S	S	S	S	S
TIRE PRESSURE MONITORING SYSTEM Does not monitor spare tire	S	S	S	S	S
VEHICLE THEFT-DETERRENT SYSTEM With PASS-Key III and engine immobilizer	S	S	S	S	S

¹RDS functions only where stations broadcast RDS information.

²Not compatible with all devices.

³Map coverage for Puerto Rico and the Virgin Islands available on separate disc. Coverage not available for portions of Canada.

⁴Required XM Radio and XM NavTraffic monthly subscriptions sold separately by XM after trial period. XM NavTraffic only available in select markets. For more information, visit xmradio.com/navtraffic.

⁵XM Radio requires a subscription, sold separately by XM after the first 90 days. XM Radio U.S. service only available in the 48 contiguous United States and the District of Columbia. For more information, visit xmradio.com.

⁶Go to gm.com/bluetooth to find out which Bluetooth phones are compatible with the vehicle.

⁷Visit onstar.com for details and system limitations.

⁸Always use safety belts and the correct restraint for your child's age and size. Even in vehicles equipped with the Passenger Sensing System, children are safer when properly secured in a rear seat in the appropriate infant, child or booster seat. Never place a rear-facing infant restraint in the front seat of any vehicle equipped with a passenger air bag. See the Owner's Manual and child safety seat instructions for more safety information.

ACADIA WHEELS



P23
18"
PAINTED ALUMINUM
STANDARD: SL AND
SLE TRIM



P64
19"
ULTRA-BRIGHT
MACHINED ALUMINUM
STANDARD: SLT-1
AND SLT-2



5Q4
20"
CHROME CLAD
STANDARD: DENALI

AVAILABLE FEATURES



REAR-SEAT ENTERTAINMENT SYSTEM

Includes a rear-seat DVD player with remote, overhead display, two sets of wireless infrared headphones (batteries included) and more.



REARVIEW CAMERA SYSTEM

When you shift into reverse, the available NAV screen displays a view of what's behind Acadia. On models without touch-screen navigation, the image is displayed in a portion of the rearview mirror.



SECOND-ROW BENCH SEAT

The 60/40 split flat-folding bench seat with SmartSlide gives Acadia eight-passenger seating (2-3-3).

GMC ACADIA

GMC ACCESSORIES

Make Acadia your very own with available accessories created specifically to match its distinctive style, as well as yours. All of these items have been tested to meet GMC's original equipment standards for performance and appearance. Their cost can be applied to your purchase, installed by your GMC dealer and covered under GM's New-Vehicle Limited Warranty.¹ Just ask your dealer.

FIGURE 1: HEAD RESTRAINT DVD²



Entertain your rear-seat passengers. Separate players are available for the driver-side and passenger-side head restraints.

FIGURE 2: ROOF RACK CARGO BOX



This hard-shell roof rack cargo box gives Acadia 250 lbs of cargo-carrying capability.³ It mounts easily into the T-slots of the available roof-mounted luggage cross rails.

FIGURE 3: MOLDED TRAILER HITCH CLOSEOUT



This custom-molded trailer hitch closeout hides the receiver opening when you remove your ball mount assembly. Molded to match lower trim.

FIGURE 4: CARGO SECURITY SHADE



This Ebony fabric shade keeps the cargo area of your Acadia under wraps. Attaches easily and folds or rolls for convenient storage.

FIGURE 5: PREMIUM ALL-WEATHER FLOOR MATS



Designed to handle the elements, these precision-designed mats precisely fit the floor of your Acadia. Front mats feature an embossed GMC logo. Available in Ebony.

FIGURE 6: MOLDED HOOD PROTECTOR



Look stylish while you help protect your vehicle's finish from insects and road debris. Designed and engineered specifically to fit the contours of your Acadia.

FIGURE 7: 19" AND 20" CAST CHROME WHEELS⁴

Roll with the best. These custom wheels feature a brilliant, lustrous, durable chrome finish, and are available with matching lugs and GMC center caps.



RV022 19" CAST-CHROME
6-SPOKE V-SPLIT WHEEL



RV019 19" CAST-CHROME
10-SPOKE WHEEL



RV981 20" CAST-CHROME
6 DOUBLE-SPOKE WHEEL (VZS)



RV025 20" CAST-CHROME
6 DOUBLE-SPOKE WHEEL (VZR)



RV821 20" CAST-CHROME
12-SPOKE WHEEL (VZU)



ACADIA SLT AWD IN QUICKSILVER METALLIC SHOWN WITH DEALER-INSTALLED ASSIST STEPS, MOLDED SPLASH GUARDS AND RV987 20" CHROME WHEELS⁴

ENGINE

3.6 L V-6 VVT DI

BORE AND STROKE (MM) 94.0 x 85.6

11.3:1 COMPRESSION RATIO

VALVE TRAIN Double-Overhead Cam with four valves per cylinder

FUEL DELIVERY Spark-ignited direct fuel injection

288 HORSEPOWER @ 6300 RPM

270 TORQUE @ 3400 RPM (LB-FT)

TRANSMISSION 6-speed automatic Hydra-Matic 6T75

STANDARD FRONT-WHEEL DRIVE (FWD)

AVAILABLE ALL-WHEEL DRIVE (AWD)
Active Intelligent all-wheel drive

EPA-ESTIMATED MILEAGE

FWD 17 city/24 hwy

AWD 16 city/23 hwy

STANDARD TECHNICAL DATA

BRAKES Four-wheel disc with antilock braking system

STEERING Hydraulic rack-and-pinion system

FUEL TANK CAPACITY 22.0 approximate gallons

BATTERY 690 cold-cranking amps

ALTERNATOR 170 amps

TRAILERING DATA

FWD Axle ratio: 3.16

Maximum trailer weight:⁵ 5200 lbs

AWD Axle ratio: 3.16

Maximum trailer weight:⁵ 5200 lbs

EXTERIOR DIMENSIONS (INCHES)

OVERALL HEIGHT 72.8 with roof rails

OVERALL WIDTH 78.2

OVERALL LENGTH 200.7

WHEELBASE 118.9

GROSS VEHICLE WEIGHT RATING (GVWR)⁶ (LBS)

FWD 6411

AWD 6459

CARGO AREA DIMENSIONS³

SECOND AND THIRD ROW FOLDED
116.9 cu. ft.

SECOND ROW UP/THIRD ROW FOLDED
68.9 cu. ft.

BEHIND THIRD ROW 24.1 cu. ft.

¹GM Accessories permanently installed at the time of new-vehicle delivery are covered under the New-Vehicle Limited Warranty. If installed after delivery, coverage (parts and labor) is for the balance of the new-vehicle warranty or a minimum of 12 months/12,000 miles, whichever comes first. GM Accessories not requiring installation or purchased over the counter carry a 12-month limited warranty (parts only). Does not apply to licensed products. ²Offered as a dealer-ordered accessory option. ³Cargo and load capacity limited by weight and distribution. ⁴Use only GM-approved wheel and tire combinations. Unapproved combinations may change the vehicle's performance characteristics. For approved wheel and tire combinations and other important information, go to gmaccessorieszone.com or see your dealer for details. ⁵Maximum trailer weight ratings are calculated assuming a base vehicle, except for any option(s) necessary to achieve the rating, plus driver. The weight of optional equipment, passengers, cargo and required trailering equipment will reduce the maximum trailer weight your vehicle can tow. See your dealer for details. ⁶When properly equipped; includes weight of vehicle, passengers, cargo and equipment.

GMC ACADIA

COLORS

RED JEWEL TINTCOAT¹



WHITE DIAMOND TRICOAT¹



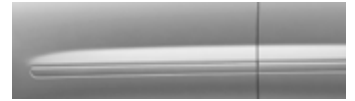
CARBON BLACK METALLIC¹



SUMMIT WHITE



QUICKSILVER METALLIC¹



CYBER GRAY METALLIC²



MEDIUM BROWN METALLIC²



GOLD MIST METALLIC²



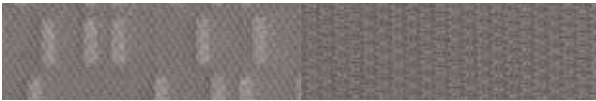
DARK BLUE METALLIC²



GRAY-GREEN METALLIC²



PREMIUM CLOTH STANDARD ON SL AND SLE



LIGHT TITANIUM

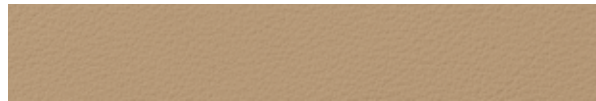


EBONY

ULTRASOFT LEATHER-APPOINTED STANDARD ON SLT, OPTIONAL ON SLE



LIGHT TITANIUM

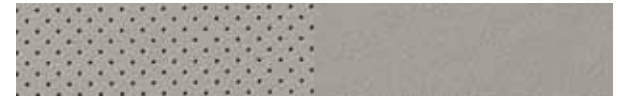


CASHMERE



EBONY

PERFORATED LEATHER STANDARD ON DENALI, OPTIONAL ON SLT




LIGHT TITANIUM



CASHMERE



EBONY



AT GMC, MORE IS WHAT WE DO. OUR DEDICATION TO ENGINEERING EXCELLENCE LEADS US TO CONSTANTLY EXAMINE AND REFINE THE IDEAS THAT HELP GIVE YOU MORE CAPABILITY, POWER AND CONTROL.

FOR 2011, WE ARE PROUD TO INTRODUCE THE REDESIGNED GMC SIERRA HD, INCLUDING THE FIRST-EVER DENALI HD, OUR STRONGEST, SMARTEST AND MOST POWERFUL SIERRA PICKUPS EVER, AS WELL AS THE FIRST-EVER GMC ACADIA DENALI.

THESE NEW VEHICLES JOIN THE LEGENDARY GMC SIERRA AND YUKON THAT OFFER THE WIDEST ARRAY OF FULL-SIZE HYBRIDS AVAILABLE, AND THE GMC TERRAIN, WITH BEST-IN-CLASS HIGHWAY FUEL ECONOMY.¹

TOGETHER, THEY SHOW HOW EXPERIENCE AND INNOVATION CAN OVERCOME COMPROMISE. IT'S WHY WE NEVER SAY NEVER.

GMC. WE ARE PROFESSIONAL GRADE.

¹EPA-estimated mpg 32 hwy. Based on 2010 GM Compact SUV-Crossover segment.



ONSTAR

OnStar is a core asset of your Acadia. Benefiting from more than a decade of innovative development, it is both a highly advanced technology—fully integrated within the vehicle—and a warm human service. Standard on most Acadia models are six months of the OnStar Directions & Connections plan, including the convenience of Hands-Free Calling. It also includes Automatic Crash Response (see page 14), Stolen Vehicle Assistance, link to Emergency Services, Roadside Assistance, Remote Door Unlock, OnStar Vehicle Diagnostics, Crisis Assist and Remote Horn and Lights. OnStar services require vehicle electrical system (including battery), wireless service and GPS satellite signals to be available and operating for features to function properly. OnStar acts as a link to existing emergency service providers. Visit onstar.com for coverage maps, details and system limitations. Services vary with conditions.

HANDS-FREE CALLING

OnStar Hands-Free Calling capability is built into your Acadia. It's there when your cell phone is unavailable, its battery is low, you can't reach it easily or you left it home or in the office. Your Hands-Free Calling system is the right choice whenever you need an easy way to make and receive calls—at the touch of the phone icon on the rearview mirror or the steering-wheel-mounted controls shown on page 5. Voice-activated dialing is convenient because you don't have to dial when you are at the wheel. And Hands-Free Calling is reliable because it's specially designed for better reception and fewer dropped calls in areas of limited cellular reception. You are invited to experience the benefits yourself with 30 Hands-Free Calling minutes—on OnStar—during the first two months you drive your Acadia, with no strings attached.

ONSTAR TURN-BY-TURN NAVIGATION

Standard on all Acadia models are six months of the OnStar Directions & Connections plan that adds innovative, easy-to-use Turn-by-Turn Navigation plus Information and Convenience Services and Driving Directions. With Turn-by-Turn Navigation, you simply tell the OnStar Advisor your intended destination, and directions will automatically be sent to your Acadia. If you drive off-course, the system can reroute you to your intended destination. An automated voice then guides you turn-by-turn until you arrive at your destination. Turn-by-Turn Navigation is further enhanced with eNAV, allowing you to send Google® Maps and MapQuest® directions directly to your vehicle. No need to print out directions; just call them up with simple voice commands.



XM RADIO

On all Acadia models, XM Radio¹ is standard with 3 trial months of service. XM turns your drive on with commercial-free music channels from virtually every genre, artist-dedicated channels, live performances and more. Tune in to live play-by-play from the biggest sports, exclusive entertainment from top personalities, compelling talk, hilarious comedy, world-class news, local traffic and weather and family-friendly programming. Everything worth listening to is now on XM. Visit gm.xmradio.com for details.



XM NAVTRAFFIC

Included with the available Touch-Screen Navigation System, 3 trial months of XM NavTraffic² enhances Acadia's GPS navigation system by showing real-time traffic data—while you're driving. Available in over 80 markets, XM NavTraffic displays construction, road closures and accidents so that you can get to your destination faster, plus average traffic speed and estimated drive time in select markets. For more information, visit xmradio.com/navtraffic.



GOODWRENCH SERVICE

To help your Acadia live up to its performance promise, GMC Goodwrench Service—found exclusively at your GMC dealer—is there. With all the engineering excellence in Acadia, GM-trained Goodwrench technicians have the expertise to care for all of it.

¹XM Radio requires a subscription, sold separately by XM after the first 90 days. XM Radio U.S. service only available in the 48 contiguous United States and the District of Columbia. For more information, visit gm.xmradio.com.

²Required XM Radio and NavTraffic monthly subscriptions sold separately by XM after trial period. XM NavTraffic only available in select markets. For more information, visit xmradio.com/navtraffic.



COMMITMENT PLUS

From the owner orientation—and full tank of gas—you receive when you take possession of your Acadia to the **24-Hour Roadside Assistance, Courtesy Transportation** and **Travel Benefits**, Commitment Plus is a portfolio of owner privileges that lasts throughout your warranty. For expert product information, Roadside Assistance or other services, call 1-800-GMC-8782.

TRAVEL BENEFITS AND ROADSIDE ASSISTANCE Available around the clock: trip routing service, a program for reimbursement for trip interruption due to necessary warranty repairs, towing, flat tire change, jump-starts and more for 5 years or 100,000 miles (whichever comes first).

COURTESY TRANSPORTATION Available at participating dealers: shuttle service, reimbursement of certain public transportation or fuel expenses for overnight warranty repairs, and courtesy rental for overnight work repairs. See your dealer for details.

GMC OWNER CENTER A complimentary, one-stop resource to enhance your GMC ownership experience. It's easy to sign up. Just go to gm.com/gmownercenter/gmc.

CONFIDENCE IS STANDARD Acadia offers a comprehensive consumer confidence package that is among the best in the industry. It means you get all the benefits of Commitment Plus, including Roadside Assistance and Courtesy Transportation, along with the GM 5-Year/100,000-Mile Transferable Powertrain Limited Warranty (whichever comes first). Ask your GMC dealer for all the details.

A NOTE ON CHILD SAFETY Always use safety belts and the correct restraint for your child's age and size. Even in vehicles equipped with the Passenger Sensing System, children are safer when properly secured in a rear seat in the appropriate infant, child or booster seat. Never place a rear-facing infant restraint in the front seat of any vehicle equipped with a passenger air bag. See the Owner's Manual and child safety seat instructions for more safety information.

TRAILERING AND OFF-ROAD INFORMATION Please carefully review the Owner's Manual for important safety information about trailering or off-road driving in your vehicle.

IMPORTANT WORDS ABOUT THIS CATALOG We have tried to make this catalog comprehensive and factual. We reserve the right, however, to make changes at any time, without notice, in prices, colors, materials, equipment, specifications, models and availability. Specifications, dimensions, measurements, ratings and other numbers in this catalog and other printed materials provided at the dealership or affixed to vehicles are approximates based upon design and engineering drawings and prototypes and laboratory tests. Your vehicle may differ due to variations in manufacture and equipment. Since some information may have been updated since the time of printing, please check with your GMC dealer for complete details. GMC reserves the right to lengthen or shorten the model year for any product for any reason, or to start and end model years at different times.

FLEET ORDERS Some standard content may be deleted with fleet orders. See dealer for details.

ENGINES GMC products are equipped with engines produced by GM Powertrain or other suppliers to GM worldwide. The engines in GMC products may also be used in other GM makes and models.

GMC.COM See more of Acadia on our Web site: gmc.com/acadia. More photos and information; hot links to related subjects; convenient dealer locator; pricing guide, spec out your own vehicle. Or call 1-800-GMC-8782.

AN IMPORTANT NOTE ABOUT ALTERATIONS AND WARRANTIES Installations or alterations to the original equipment vehicle (or chassis) as distributed by General Motors are not covered by the General Motors New-Vehicle Limited Warranty. The special body company, assembler, equipment installer or upfitter is solely responsible for warranties on the body or equipment and any alterations (or any effect of the alterations) to any of the parts, components, systems or assemblies installed by GM. General Motors is not responsible for the safety or quality of design features, materials or workmanship of any alterations by such suppliers.

NEW-VEHICLE LIMITED WARRANTY All GMC light-duty vehicles come with a fully transferable, no-deductible 5-year/100,000-mile (whichever comes first) Powertrain Limited Warranty. GM vehicles registered in the U.S.A. are also covered for 3 years or 36,000 miles (whichever comes first). Coverage includes tires and towing to your nearest GMC dealership. Repairs will be made to correct any vehicle defect and most warranty repairs will be made at no charge. In addition, rust-through corrosion will be covered for 6 years or 100,000 miles (whichever comes first). See dealer for details.

ASSEMBLY GMC vehicles and their components are assembled or produced by different operating units of General Motors, its subsidiaries or suppliers to GM worldwide. We sometimes find it necessary to produce GMC vehicles with different or differently sourced components than originally scheduled. Since some options may be unavailable when your vehicle is assembled, we suggest that you verify that your vehicle includes the equipment you ordered or, if there are changes, that they are acceptable to you.

GMMOBILITY.COM (1-800-323-9935) GM Mobility offers financial assistance for eligible adaptive equipment to make automotive travel easier for persons with disabilities or special transportation needs. To learn more about special GM Mobility offers, visit gmmobility.com.

GMCARDMEMBERSERVICES.COM Did you know about the family of reward credit cards that can help you get a great deal on a new GM car, light-duty truck, SUV or crossover? With a GM reward card, you accrue earnings on every credit card purchase to use toward the purchase or lease of an eligible new GM vehicle. With three cards to choose from, you're sure to find one that suits you.

©2010 General Motors. All rights reserved. GM, the GM logo, GMC, the slogans, emblems, vehicle model names, vehicle body designs and other marks appearing in this catalog are the trademarks and/or service marks of General Motors, its subsidiaries, affiliates or licensors. Bose is a registered trademark of the Bose Corporation. iPod is a registered trademark of Apple, Inc. Facebook is a registered trademark of Facebook, Inc.



GMC.COM | LEARN MORE ABOUT GMC, AND JOIN THE DIALOGUE ON FACEBOOK (FACEBOOK.COM/GMC)

11GMCACRC-25

