

2010 | RANGER



BEST-SELLING COMPACT PICKUP IN CANADA.¹



Ford Ranger is the most-wanted truck because it's bred from Built Ford Tough[®] bloodlines. It's got the strength to tow up to 5780 lbs. (2620 kg),² plus the conditioning of over 20 years of proven durability and reliability. Beyond capability, this year sees a new sensibility: Outboard front-seat side airbags and industry-exclusive AdvanceTrac[®] with RSC[®] (Roll Stability Control[™]) come standard on each model – XL, SPORT and XLT. So does a prepaid 6-month subscription to SIRIUS[®] Satellite Radio.³ Sizes vary from Regular to SuperCab. Power yours up with an available V6, or go for a smart I-4 engine with fuel-efficiency ratings no other Canadian pickup can beat.⁴

Whatever you've got in mind, Ranger is more than happy to oblige.



¹Based on Ford branded vehicle sales from the manufacturers' month-end release December 2008. ²When properly equipped with 4.0L engine. Class III hitch receiver regardless of model. See Specifications section for maximum allowable trailer weight for each engine and transmission. ³Available for extra cost on Ranger XL FEL. ⁴Ranger XL FEL with manual transmission: 7.3L/100 km (39 mpg) hwy. and 9.5L/100 km (30 mpg) city. Fuel consumption ratings based on Transport Canada approved test methods.

Ranger XL is pure workhorse. With the able support of heavy-duty shocks and a rock-solid, steel ladder frame, take the hitch receiver and double-walled cargo box to the payload limit. Maximize the function of this truck's fit-anywhere form with the advantage of unsurpassed fuel economy – 7.3L/100 km (39 mpg) hwy. and 9.5L/100 km (30 mpg) city.¹ For the first time ever, the efficient 2.3L I-4 engine is available on XL SuperCab 4x2.



V6 ENGINE AVAILABLE

Add more muscle under the power dome hood: The 4.0L SOHC V6 delivers 207 hp and 238 lb.-ft. of torque – mean numbers for crawling or hauling. Pull up to 5780 lbs. (2620 kg).² That's enough to tow a small boat, jet skis or an equipment trailer.

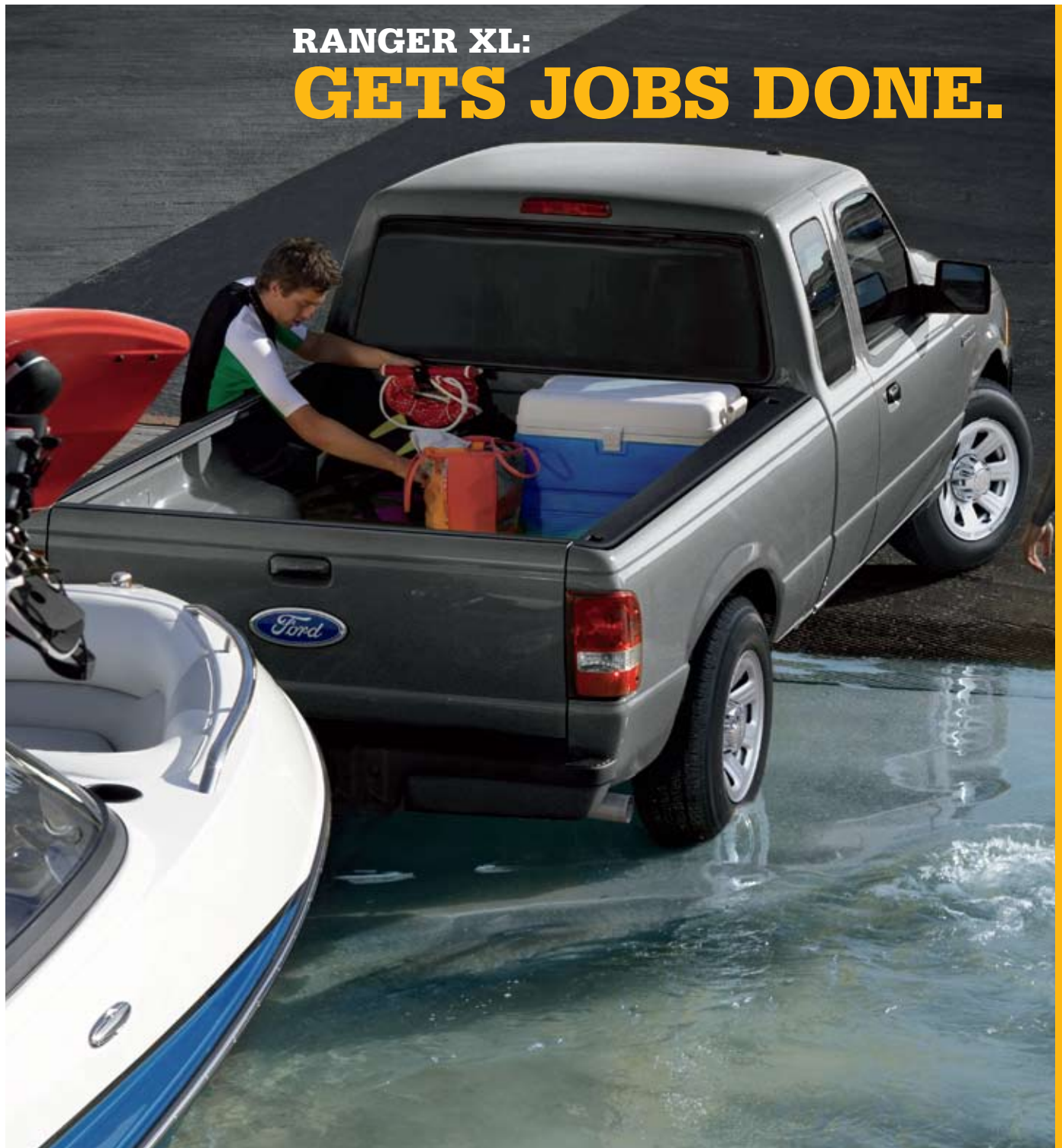


CLASS-EXCLUSIVE³ JUMP SEATS

All SuperCabs are equipped in back with folding jump seats, making for lots of leg room or cargo space. Up front, the 60/40 split seat allows for 3-across seating.

¹Fuel consumption ratings based on Transport Canada approved test methods for Ranger XL FEL with manual transmission. ²When properly equipped with 4.0L engine. Class III hitch receiver regardless of model. See Specifications section for maximum allowable trailer weight for each engine and transmission. ³Class is Compact Pickups.

RANGER XL: GETS JOBS DONE.



Ranger XL 4x2 SuperCab in Dark Shadow Grey Metallic with available equipment.

RANGER SPORT: PREFERS DIRT & MUD.



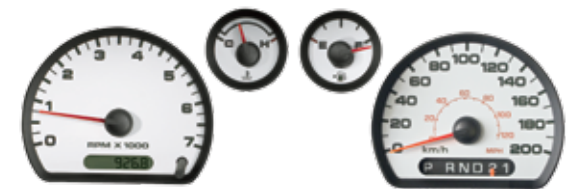
Ranger SPORT 4x4 SuperCab in Torch Red with available equipment.

Climb rocks. Challenge hills. Tackle streams. Ranger SPORT is where the action is. V6 powerplant, fog lamps and tow hooks are standard provisions. H-bar grille, wheel-lip mouldings, step bumpers and lots more go body-colour. Live life to extremes in available 4x4 mode, with Electronic Shift-On-the-Fly, 3 skid plates – shielding front, mid, aft – and 16-in. cast-aluminum rims wrapped in all-terrain rubber. When the dust settles, Ranger triumphs.



SHOCKING PERFORMANCE

Twin-tube Rancho® shocks¹ are of the cellular-gas type, making for some serious underpinnings. The long wheel travel of the torsion bar front suspension optimizes Ranger capability, especially when straying from pavement.



FLYING – FX4 OFF-ROAD STYLE

Unique white-faced gauges with jet-black readouts are standard on every SPORT. Go for the optional FX4 OFF-ROAD Package and keep track of your treks from sport bucket seats. The FX4 decal and Y-spoke cast-aluminum wheels turn heads; a beefy 8.8-in. axle with a 4.10 ratio turns up the excitement.

¹Standard on 4x4 models.

RANGER XLT: RAISES THE BAR.



From the chrome grille and step bars, to the chrome sideview mirror caps and exhaust tip, Ranger XLT makes a powerful statement. It's also loaded with aluminum wheels, a leather-wrapped tilt steering wheel, cruise control and exclusive carpeted flooring. SIRIUS Satellite Radio gives you the power of choice: Surf up to 120 channels, including 100% commercial-free music, plus the best sports, news, talk and entertainment, all across Canada.^{1,2} Ranger sounds as good as it looks.

¹See your Ford of Canada Dealer or contact SIRIUS at 1-888-539-7474 for more information.



POWER PACKED

The Power Equipment Group provides you with handy electronic operation of the windows, door locks and sideview mirrors. You also benefit from remote keyless entry. Standard on XLT, optional on SPORT.



PLUG 'N' PLAY

The multi-speaker stereo system on every Ranger includes a CD player² and the all-in-one convenience of an audio input jack – plug in your MP3 player, then crank it up.

²Available at extra cost on Ranger XL FEL.

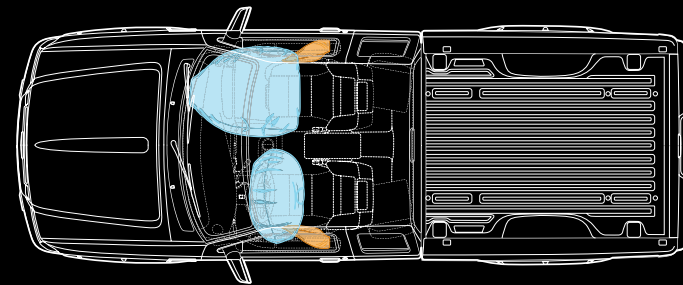
Ranger XLT 4x4 SuperCab in Black with available equipment.

NOW FEATURING SIDE AIRBAGS, PLUS **STABILITY CONTROL.**



Ranger is built to see you through every round of use. Its Personal Safety System™ is joined by outboard front-seat side airbags.¹ Another major new add: AdvanceTrac® with RSC® (Roll Stability Control™) is the only brake-based electronic stability control system to utilize a gyroscopic roll-rate sensor, monitoring vehicle motion at least 100 times per second. It automatically applies the anti-lock brakes and engine power to help keep all 4 wheels firmly planted.² And you more reassured.

¹Always wear your safety belt. ²Remember that even advanced technology cannot overcome the laws of physics. It's always possible to lose control of a vehicle due to inappropriate driver input for the conditions.



ACCESSORIES

- A. Garmin® Portable Navigation Systems¹
- B. Bedliner and Tailgate Liner
- C. Chrome Exhaust Tip²
- D. Electrochromic Mirror
- E. Hood Deflectors
- F. Interior Soft Cargo Organizers and Soft Cargo Cooler Bag
- G. Remote Start Systems
- H. Trailer Hitch Balls/Drawbars
- I. Bed Extender
- J. Side Window Deflectors
- K. All-Weather Floor Mats
- L. Manual Sliding Rear Window
- M. Soft Roll-Up Tonneau Cover¹
- N. Step Bars
- O. Tail Lamp Surrounds

Also available:

- Ashcup/Coin Holder/Smoker's Pack
- Bed Rails
- Bed Rug
- Electronic Safety Tow
- Hard Folding Tonneau Cover¹
- Interior Lighting Kit
- Keyless Entry Keypad
- Retractable Bed Hooks
- Soft Folding Tonneau Cover¹
- Trailer Hitch Assembly — 2-in. Receiver
- Vehicle Security System
- Wheel Locks
- Wiper Shaker De-Icer and Debris Cleaner¹

¹Ford Licensed Accessories.

²V6 models only.

Garmin is a registered trademark of Garmin Ltd.

A.



B.



C.



D.



E.



F.



G.



H.



I.



J.



K.



L.



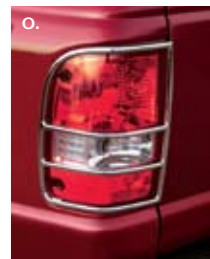
M.



N.



O.



Ford of Canada warrants that its authorized Dealers will repair or replace any Genuine Ford Accessory that is properly installed by the authorized Dealer that sold the accessory and found to be defective in factory-supplied materials or workmanship. The accessory will be warranted for whichever provides you the greatest benefit: 12 months/20,000 km (whichever occurs first), or the remainder of your 36-month/60,000-km (whichever occurs first) Basic Coverage in the New Vehicle Limited Warranty. Contact your local Ford of Canada Dealer for details.

Ford Licensed Accessories (FLA) are warranted by the accessory manufacturer's limited warranty. The warranty coverage will vary by accessory manufacturer. Ford Licensed Accessories are fully designed and developed by the accessory manufacturer and have not been designed or tested to Ford engineering requirements. Contact your local Ford of Canada Dealer for details regarding the accessory manufacturer's limited warranty and/or for a copy of the FLA product limited warranty offered by the accessory manufacturer.

Ford ESP PremiumCare Plan. Depending on the Ford ESP Plan you select, some Dealer-installed Genuine Ford Accessories can be covered up to 7 years or 150,000 km. See your Ford of Canada Dealer for details.

SPECIFICATIONS

Model-Specific Features

Each series includes the standard equipment of the previous series, except where additions/exceptions are noted. Vehicles shown may contain optional equipment.



XL – Select standard content:

Black front and rear step bumpers • Black “bar-style” grille with black grille surround • Manual sideview mirrors with black caps • 15-in. 7-spoke silver-painted steel wheels • 15-in. “split-spoke” machined cast-aluminum wheels (SuperCab 4x2) • AdvanceTrac® with RSC® (Roll Stability Control™) • Front-seat side airbags • Bed-rail and tailgate protectors • Intermittent windshield wipers • AM/FM stereo/single-CD player with MP3 capability, audio input jack and clock (optional with XL FEL Package) • Black rugged textured vinyl floor covering • Interior dome light • Rearview mirror • Cloth 60/40 split seats (includes rear jump seats with SuperCab) • SIRIUS Satellite Radio with 6-month prepaid subscription (optional with XL FEL Package) • Smoker’s Package • Black urethane steering wheel • Visors with driver map strap • Manual front windows (2nd-row fixed windows on SuperCab) • Personal Safety System™ with Front-Passenger Sensing System • SecuriLock® passive anti-theft engine immobilizer system • Tire Pressure Monitoring System • Payload Package #1 with 2.3L engine • Payload Package #2 (SuperCab with 4.0L engine) • Class III trailer tow hitch receiver

4x2: P225/70R15 A/S OWL tires • Fuel-tank skid plate (SuperCab 4x2)

4x4: P235/75R15 A/T OWL tires (SuperCab only)



SPORT – All XL content, plus:

Body-colour front and rear step bumpers • Body-colour door handles • Fog lamps • Colour-keyed “bar-style” grille • Manual sideview mirrors with body-colour caps • Body-colour wheel-lip mouldings

4x2: 15-in. “split-spoke” machined cast-aluminum wheels with P235/75R15 A/T OWL tires • Payload Package #1 • Heavy-duty front and rear gas-charged shocks • Fuel-tank skid plate

4x4: 16-in. twin-spoke cast-aluminum wheels with P255/70R16 A/T OWL tires • Tow hooks • Payload Package #2 • Rancho® heavy-duty gas-charged shock absorbers • Air conditioning • Skid plates front, mid and aft



XLT – All SPORT content, plus:

Chrome “bar-style” grille with chrome grille surround • Manual sideview mirrors with chrome caps • Black door handles • Colour-coordinated carpet and floor mats • Leather-wrapped, tilt steering wheel with cruise control • Visors with driver map strap and passenger mirror • Chrome side step bars • Chrome exhaust tip

4x2: 15-in. 5-spoke aluminum wheels with P225/70R15 A/S OWL tires • Heavy-duty front and rear gas-charged shocks • Fuel-tank skid plate

4x4: 16-in. twin-spoke cast-aluminum wheels with P255/70R16 A/T OWL tires (4x4) • Tow hooks • Rancho heavy-duty gas-charged shock absorbers • Skid plates front, mid and aft

Standard Equipment

Mechanical

4-wheel Anti-lock Brake System (ABS)

Alternator — 115-amp

Battery saver — Automatically deactivates interior lights

Body-on-frame construction

Electronic Brakeforce Distribution (EBD)

Engine block heater

Front and rear disc brakes

Power rack-and-pinion steering

Suspension — Front: independent Short- and Long-Arm with stabilizer bar; rear: 2-stage leaf springs

Safety/Security

Personal Safety System for driver and right-front passenger — Includes dual-stage front airbags,¹ safety belt pretensioners, safety belt energy-management retractors, safety belt usage sensors, driver-seat position sensor, crash severity sensor, restraint control module and Front-Passenger Sensing System

Front-seat side airbags¹

AdvanceTrac with RSC (Roll Stability Control)

Belt-Minder™ front safety belt reminder

Safety belt height adjusters — Front-outboard positions

SecuriLock passive anti-theft engine immobilizer system

Side-intrusion door beams

Tire Pressure Monitoring System (excludes spare)

Interior

Audio system (varies by model)

Cupholders

Dome light

Gauge cluster with tachometer

Glove compartment

Grab handles — Driver and front passenger

Power point — 12V

Seat — Front 60/40 split

Smoker’s Package — Includes ashcup and cigarette lighter

Steering wheel — 4-spoke

Exterior

Cargo box tie-down hooks (4)

Daytime running lamps

Raised power dome hood

Sideview mirrors — Manual

Solar-tinted glass

Spare tire — Space-saver, temporary

Stone guards/mud flaps (varies by model)

Tailgate with quick release

Trailer tow — Class III hitch receiver²

Windshield wipers — Intermittent

¹Always wear your safety belt.

²Class III hitch receiver regardless of model. See Maximum Loaded Trailer Weights for each engine and transmission combination.

SPECIFICATIONS

Features & Options

XL
SPORT
XLT

Mechanical

<input type="radio"/>	<input type="radio"/>	<input type="radio"/>	2.3L DOHC I-4 engine (requires XL FEL Package)
<input type="radio"/>	<input checked="" type="radio"/>	<input checked="" type="radio"/>	4.0L SOHC V6 engine (SuperCab only)
<input checked="" type="radio"/>	<input checked="" type="radio"/>	<input checked="" type="radio"/>	5-speed manual transmission with overdrive
<input type="radio"/>	<input type="radio"/>	<input type="radio"/>	5-speed automatic transmission with overdrive
<input checked="" type="radio"/>	<input checked="" type="radio"/>	<input checked="" type="radio"/>	4x2 drivetrain
<input type="radio"/>	<input type="radio"/>	<input type="radio"/>	4x4 drivetrain with Electronic Shift-On-the-Fly (ESOF)
<input type="radio"/>	<input type="radio"/>	<input type="radio"/>	15-in. 7-spoke silver-painted steel wheels — 4 (Regular Cab)
<input type="radio"/>	<input checked="" type="radio"/>	<input type="radio"/>	15-in. "split-spoke" machined cast-aluminum wheels — 4 (4x2 SuperCab only)
<input type="radio"/>	<input type="radio"/>	<input checked="" type="radio"/>	15-in. 5-spoke aluminum wheels — 4 (4x2)
<input type="radio"/>	<input checked="" type="radio"/>	<input checked="" type="radio"/>	16-in. twin-spoke cast-aluminum wheels with silver-painted accents — 4 (standard on 4x4)
<input type="radio"/>	<input checked="" type="radio"/>	<input type="radio"/>	16-in. Y-spoke cast-aluminum wheels with silver-painted accents — 4 (4x4 only; requires FX4 OFF-ROAD Package)
<input checked="" type="radio"/>	<input type="radio"/>	<input checked="" type="radio"/>	P225/70R15 all-season OWL tires — 4
<input checked="" type="radio"/>	<input checked="" type="radio"/>	<input type="radio"/>	P235/75R15 all-terrain OWL tires — 4
<input type="radio"/>	<input checked="" type="radio"/>	<input checked="" type="radio"/>	P255/70R16 all-terrain OWL tires — 4 (4x4 SuperCab only)
<input type="radio"/>	<input checked="" type="radio"/>	<input checked="" type="radio"/>	Spare — Full-size
<input checked="" type="radio"/>	<input checked="" type="radio"/>	<input checked="" type="radio"/>	Axle ratio — 3.55:1
<input checked="" type="radio"/>	<input checked="" type="radio"/>	<input checked="" type="radio"/>	Axle ratio — 3.73:1
<input checked="" type="radio"/>	<input checked="" type="radio"/>	<input checked="" type="radio"/>	Axle ratio — 4.10:1
<input checked="" type="radio"/>	<input checked="" type="radio"/>	<input checked="" type="radio"/>	Shocks — Heavy-duty ¹ (standard on SuperCab 4x2 with 4.0L engine)
<input type="radio"/>	<input checked="" type="radio"/>	<input checked="" type="radio"/>	Shocks — Rancho heavy-duty (standard on SPORT and XLT 4x4)
<input checked="" type="radio"/>	<input checked="" type="radio"/>	<input checked="" type="radio"/>	Suspension — Front coil springs (4x2)
<input type="radio"/>	<input checked="" type="radio"/>	<input checked="" type="radio"/>	Suspension — Front torsion bar (4x4)

Seating

<input checked="" type="radio"/>	<input type="radio"/>	<input type="radio"/>	Front 60/40 split seat — Vinyl (requires XL FEL Package)
<input checked="" type="radio"/>	<input checked="" type="radio"/>	<input checked="" type="radio"/>	Front 60/40 split seat — Cloth
<input type="radio"/>	<input checked="" type="radio"/>	<input type="radio"/>	Front sport bucket seats — Cloth with centre console (SuperCab; included with FX4 OFF-ROAD Package)
<input checked="" type="radio"/>	<input type="radio"/>	<input type="radio"/>	Rear jump seat delete (not available on Regular Cab)

Interior

<input checked="" type="radio"/>	<input checked="" type="radio"/>	<input checked="" type="radio"/>	Air conditioning — Manual control ² (standard on SPORT 4x4)
<input checked="" type="radio"/>	<input checked="" type="radio"/>	<input checked="" type="radio"/>	AM/FM stereo/single-CD player with MP3 capability, audio input jack and 4 speakers ³
<input type="radio"/>	<input type="radio"/>	<input type="radio"/>	AM/FM stereo/6-disc in-dash CD changer with MP3 capability, audio input jack and 4 speakers
<input checked="" type="radio"/>	<input checked="" type="radio"/>	<input checked="" type="radio"/>	SIRIUS Satellite Radio ^{3,4} — Includes receiver, antenna and 6-month prepaid subscription (requires single-CD player on XL FEL)
<input type="radio"/>	<input type="radio"/>	<input type="radio"/>	Floor mats — Black vinyl, slush-type (front only)
<input type="radio"/>	<input type="radio"/>	<input checked="" type="radio"/>	Steering wheel — Tilt, with cruise control (XLT includes leather-wrapped)

Exterior

<input checked="" type="radio"/>	<input type="radio"/>	<input type="radio"/>	Regular Cab
<input type="radio"/>	<input checked="" type="radio"/>	<input checked="" type="radio"/>	SuperCab
<input type="radio"/>	<input type="radio"/>	<input type="radio"/>	Bedliner — Under-rail
<input type="radio"/>	<input type="radio"/>	<input type="radio"/>	Bodyside mouldings — Body-colour
<input type="radio"/>	<input type="radio"/>	<input type="radio"/>	Privacy glass — Rear window (includes rear quarter windows on SuperCab)
<input type="radio"/>	<input checked="" type="radio"/>	<input type="radio"/>	Side step bars — Black (included with FX4 OFF-ROAD Package)
<input type="radio"/>	<input type="radio"/>	<input type="radio"/>	Sliding rear window (requires privacy glass)

XL
SPORT
XLT

Packages

<input type="radio"/>	<input type="radio"/>	<input checked="" type="radio"/>	Bright Trim Group — Includes chrome sideview mirror caps (except on SPORT), chrome side step bars with non-skid surface, and chrome exhaust tip (SuperCab only)
<input type="radio"/>	<input checked="" type="radio"/>	<input type="radio"/>	FX4 OFF-ROAD Package — Includes 4.10 axle ratio, 16-in. Y-spoke cast-aluminum wheels with silver-painted accents, FX4 box-side decal, side step bars (Black; chrome when ordered with Bright Trim Group), cloth SPORT bucket seats, sliding rear window, privacy glass, Power Equipment Group and tilt steering wheel with cruise control (4x4 only)
<input type="radio"/>	<input type="radio"/>	<input checked="" type="radio"/>	Power Equipment Group — Includes power windows, door locks, sideview mirrors and remote keyless-entry system
<input checked="" type="radio"/>	<input type="radio"/>	<input type="radio"/>	XL Fuel Economy Leader (XL FEL Package) — Includes 2.3L DOHC I-4 engine, 15-in. 7-spoke silver-painted steel wheels, Payload Package #1 and vinyl 60/40 split seat (requires Regular Cab 4x2)

Standard Select Availability Optional Not available

¹Not available with XL FEL Package.

²Required on XL with 4.0L engine.

³Standard on XL; optional on XL FEL Package.

⁴Compatible with all Ranger MP3 audio systems.

"SIRIUS," the SIRIUS dog logo, channel names and logos are trademarks of SIRIUS XM Radio Inc.

Subscriptions governed by SIRIUS Terms and Conditions at siriuscanada.ca.

SPECIFICATIONS

Maximum Loaded Trailer Weight^{1,2} kg (lbs.)

Manual Transmission			Regular Cab		SuperCab	
Engine	Axle Ratio	GCWR	4x2	4x2	4x4	
2.3L DOHC I-4	3.73/4.10	2177 (4800)	699 (1540)	608 (1340)	—	
4.0L SOHC V6	3.55	3175 (7000)	—	1515 (3340)	—	
	3.73/4.10	3175 (7000)	—	—	1415 (3120)	

Automatic Transmission			Regular Cab		SuperCab	
Engine	Axle Ratio	GCWR	4x2	4x2	4x4	
2.3L DOHC I-4	4.10	2495 (5500)	998 (2200)	898 (1980)	—	
4.0L SOHC V6	3.55	4309 (9500)	—	2622 (5780)	—	
	3.73/4.10	4309 (9500)	—	—	2531 (5580)	

Maximum Payload¹ kg (lbs.)

Wheelbase	Engine	Max. Payload	Max. GVWR
Regular Cab			
112-in.	2.3L	526 (1160)	1955 (4300)
SuperCab 4x2			
126-in.	2.3L	635 (1400)	2159 (4760)
	4.0L	540 (1190)	2159 (4760)
		689 (1520)	2313 (5100)
SuperCab 4x4			
126-in.	4.0L	617 (1360)	2336 (5150)
		676 (1490)	2395 (5280)

¹Maximum capabilities shown are for properly equipped vehicles with required equipment and a 68-kg (150-lb.) driver. Weight of additional options, equipment, passengers and cargo must be deducted from this weight. For additional information, see your Ford of Canada Dealer. NOTE: Ranger does not have an electric brake wiring provision. ²Class III hitch receiver capability when equipped with 4.0L V6. Class II hitch capability when equipped with 2.3L I-4.

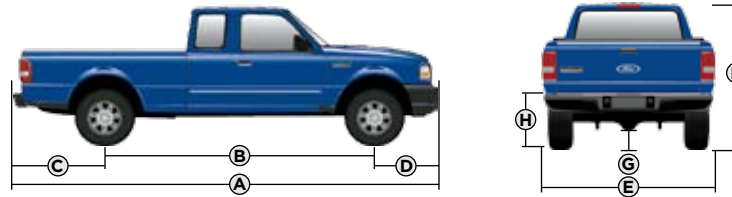
Estimated Fuel Consumption³ L/100 km (mpg)

Engine	Transmission	4x2		4x4	
		City	Highway	City	Highway
2.3L DOHC I-4	5-Speed Manual	9.5 (30)	7.3 (39)	—	—
	5-Speed Automatic	11.0 (26)	8.4 (34)	—	—
4.0L SOHC V6	5-Speed Manual	14.0 (20)	9.7 (29)	14.0 (20)	10.6 (27)
	5-Speed Automatic	13.4 (21)	9.7 (29)	15.1 (19)	11.2 (25)

³Fuel consumption ratings based on Transport Canada approved test methods.

Engines

	2.3L DOHC 16-valve I-4	4.0L SOHC 12-valve V6
Horsepower (hp @ rpm)	143 @ 5250	207 @ 5250
Torque (lb.-ft. @ rpm)	154 @ 3750	238 @ 3000



Dimensions & Ratings

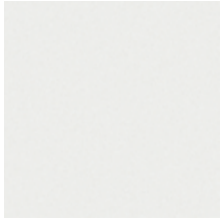
Exterior mm (in.)	Regular Cab 4x2	SuperCab 4x2/4x4
A. Overall length 6-ft. box	4811 (189.4)	5171 (203.6)
B. Wheelbase 6-ft. box	2832 (111.5)	3193 (125.7)/ 3198 (125.9)
C. Overhang — rear 6-ft. box	1118 (44.0)	1118 (44.0)/ 1113 (43.8)
D. Overhang — front	864 (34.0)	864 (34.0)
E. Width (excluding mirrors) Width (including mirrors)	1760 (69.3) 2065 (81.3)	1763 (69.4) 2065 (81.3)
F. Height 6-ft. box	1681 (66.2)	1684 (66.3)/ 1694 (66.7)
G. Ground clearance	226 (8.9)	218 (8.6)/ 208 (8.2)
H. Ground to open tailgate height 6-ft. box	754 (29.7)	749 (29.5)/ 810 (31.9)
Ramp breakover angle 6-ft. box	24.4°	23.3°/18.6°
Angle of departure 6-ft. box	24.6°	24.3°/27.4°
Angle of approach 6-ft. box	23.5°	23.8°/24.9°

Interior mm (in.)	Regular Cab 4x2	SuperCab 4x2/4x4
Front		
Head room	995 (39.2)	995 (39.2)
Shoulder room	1384 (54.5)	1384 (54.5)
Hip room	1338 (52.7)	1338 (52.7)
Leg room	1077 (42.4)	1077 (42.4)
Rear		
Head room	—	843 (33.2)
Shoulder room	—	358 (14.1)
Hip room	—	475 (18.7)
Leg room	—	993 (39.1)

Cargo Box	6-ft. box
Volume litres (cu. ft.)	1059 (37.4)
Length at floor mm (in.)	1846 (72.7)
Width at wheelhouse mm (in.)	1028 (40.5)
Rear opening width at top mm (in.)	1379 (54.3)
Height mm (in.)	419 (16.5)

COLOURS

Exterior



Oxford White



Torch Red



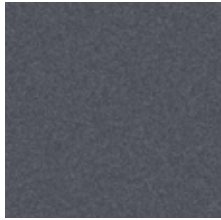
Redfire Metallic



Vista Blue Metallic



Silver Metallic



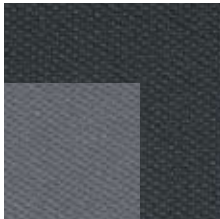
Dark Shadow Grey Metallic



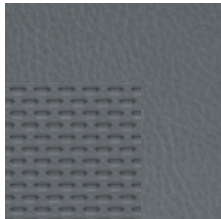
Black

Colours shown are representative only. Not all colours are available on all models. See your Ford of Canada Dealer for actual paint/trim options.

Interior



Medium Dark Flint Cloth



Medium Dark Flint Vinyl (requires XL FEL Package)

Medium Dark Flint

XL

- Oxford White
- Torch Red
- Vista Blue Metallic
- Silver Metallic
- Dark Shadow Grey Metallic
- Black

SPORT

- Oxford White
- Torch Red
- Redfire Metallic
- Vista Blue Metallic
- Silver Metallic
- Dark Shadow Grey Metallic
- Black

XLT

- Oxford White
- Torch Red
- Redfire Metallic
- Vista Blue Metallic
- Silver Metallic
- Dark Shadow Grey Metallic
- Black

WHEELS



15-in. 7-Spoke Silver-Painted Steel Standard on XL



15-in. "Split-Spoke" Machined Cast-Aluminum Standard on XL SuperCab 4x2 and SPORT 4x2



15-in. 5-Spoke Aluminum Standard on XLT 4x2



16-in. Twin-Spoke Cast-Aluminum Standard on SPORT 4x4 and XLT 4x4



16-in. Y-Spoke Cast-Aluminum Included with FX4 OFF-ROAD Package

For more information on
Ford of Canada products and services,
please visit our website:



**Our commitment to you...
Peace-of-Mind Protection**

- Basic Coverage:
3 years/60,000 km
- Powertrain Limited Warranty:
5 years/100,000 km
- Corrosion Warranty:
5 years/unlimited distance
- Roadside Assistance:
5 years/100,000 km

Certain conditions apply. For more information on these warranties and coverages, ask your local Ford of Canada Dealer or visit ford.ca.

**For prompt, courteous answers
to your questions:**

Ford Customer Relationship Centre
1-800-565-3673
Ford Credit Customer Service Centre
1-877-636-7346



Ranger



F-150



F-Series Super Duty®

Please note: The electronic version of the Ford of Canada vehicle brochure is a condensed version of the original printed version.

Competitive comparisons are based on 2009 competitive models, publicly available information and Ford data at the time of printing of the 2010 original printed version. Some features discussed may be optional. Vehicles shown may contain optional equipment. Features shown may be offered only in combination with other options or subject to additional ordering requirements or limitations. Dimensions shown may vary due to optional features and/or production variability. Following publication of the 2010 original printed brochure, certain changes in standard equipment, options and the like, or product delays may have occurred which would not be included in these pages. Your Ford of Canada Dealer is your best source for up-to-date information. Ford Motor Company of Canada, Limited, reserves the right to change product specifications at any time without incurring obligations. Colours may not be exactly as illustrated. Please see your sales consultant for specific colour and model availability. Please visit your local dealer or ford.ca for complete vehicle details.

FORD EXTENDED SERVICE PLAN

For a purchase or lease, the Ford Extended Service Plan (ESP) gives you "Peace-of-Mind" protection designed to cover key vehicle components and help protect you from the cost of unexpected repairs. To add to your peace of mind and help protect your investment beyond your New Vehicle Basic Warranty, complement your ESP with a prepaid maintenance plan that covers all required scheduled maintenance items for your vehicle and 8 wear items. Ask your Dealer for a Ford ESP, the only service contract backed exclusively by Ford Motor Company of Canada, Limited, and honoured at all Ford and Ford Lincoln Dealerships across North America. Certain limitations and exclusions apply, see your Dealer for details.

FORD CREDIT

Get the ride you want. Whether you plan to lease or finance, you'll find the choices that are right for you at Ford Credit. Ask your local Ford of Canada Dealer for details or check us out at fordcredit.ca.