

FUSION+HYBRID



2010



FUSION+HYBRID  2010

The New 2010 FUSION

GETS UP TO  
**34**  
MPG HWY.



The All-New  
FUSION HYBRID

GETS  
UP TO  
**41**  
MPG CITY

# The Most Fuel-Efficient

MIDSIZE SEDAN IN AMERICA.\*

\*EPA-estimated 23 mpg city/34 hwy., 27 combined mpg, Fusion S I-4 automatic; 41 mpg city/36 hwy., Fusion Hybrid. Actual mileage will vary. Midsize class per R. L. Polk & Co.

[fordvehicles.com](http://fordvehicles.com)

FUSION+HYBRID  2010

SIMPLY

**a Blast**

TO DRIVE.



| Fusion SEL in Sangria Red Metallic with Appearance Package and other available equipment |

### **ALL THE RIGHT MOVES.**

The choice is yours. Get up to a best-in-class<sup>1</sup> 34 mpg hwy. with the new 2.5L I-4 engine and automatic transmission on Fusion S. Keep your refueling options open with the available 240-hp 3.0L V6 Flex Fuel engine (runs on E85, gasoline or any blend of the 2). Or blast off in Fusion Sport with its new 263-hp 3.5L V6 supplying 249 lb.-ft. of torque for a road-grabbing, heart-pounding good time. Thinking hybrid power is more your style? Go green with the fun-loving Fusion Hybrid.

### **TIGHT RIDE. SERIOUS TRACTION.**

Every Fusion starts with an independent double-wishbone suspension up front and a multilink twist-blade setup in back. AdvanceTrac<sup>®</sup> electronic stability control (ESC)

[fordvehicles.com](http://fordvehicles.com)

is also standard. Combine it with available All-Wheel Drive and Fusion keeps moving – through the nastiest of challenges – even if only one wheel has traction. You'll be there in time to get the party started. No worries.

### **SIZZLING 6-SPEEDS.**

Manual or automatic – it's time to shift your state of mind. Take the new 6-speed manual for a spirited drive. Pair the smooth-shifting 6-speed automatic with the 2.5L I-4 engine for max mileage. Or let the new 6-speed SelectShift Automatic<sup>™</sup> choose the optimal gear for any situation – while giving you the power to shift for yourself whenever you want. It's the best of both worlds.

<sup>1</sup>EPA-estimated 23 mpg city/34 hwy., Fusion S I-4 automatic. Midsize class per R. L. Polk & Co. Non-hybrid models.

Travels Over  
**700 City Miles**  
ON A SINGLE TANK.<sup>1</sup>



| Fusion Hybrid in Light Ice Blue Metallic |

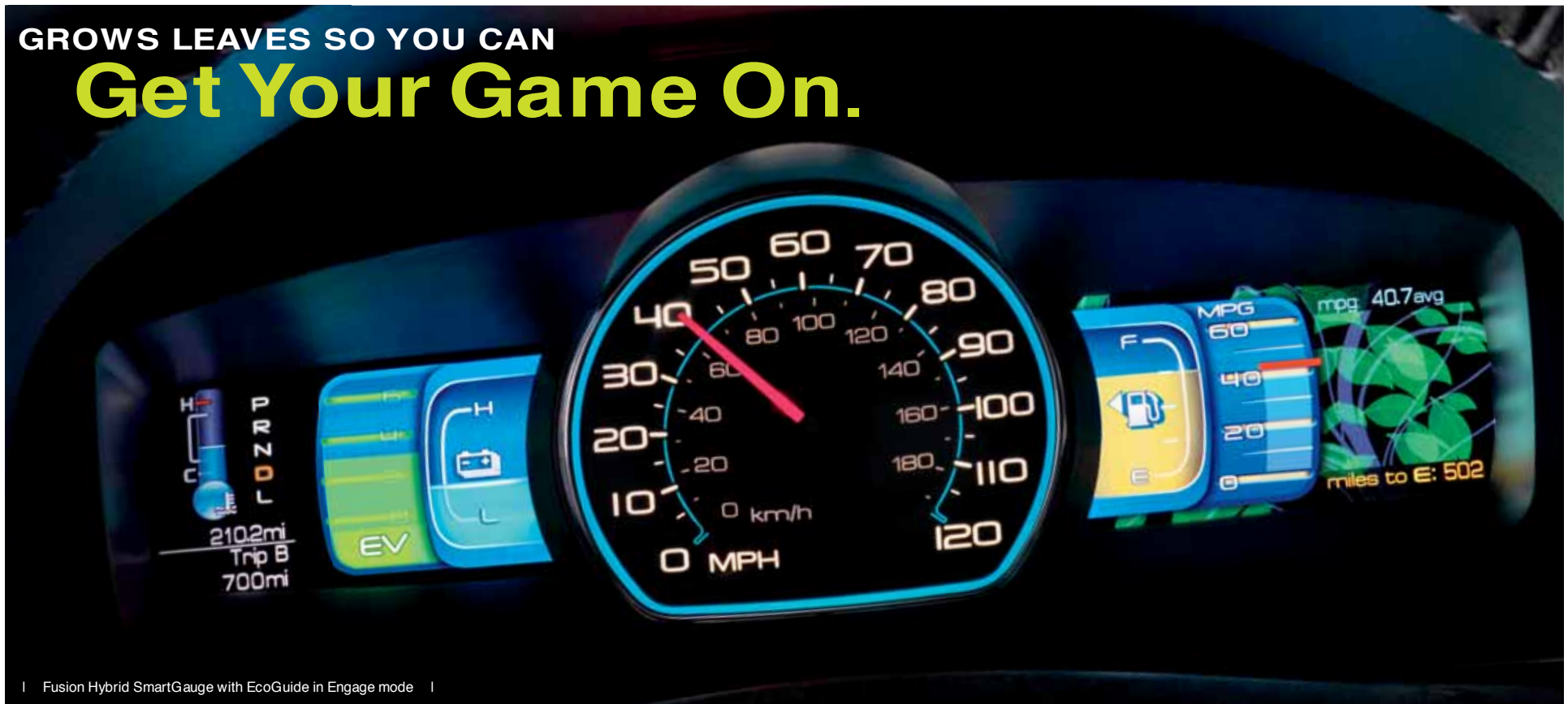
The all-new Fusion Hybrid really gets up and goes. And it does it ultra-efficiently by operating at speeds of up to **47 MPH IN PURE ELECTRIC MODE** – that's more than any other hybrid on the planet. Beyond 47 mph, the system engages its new 2.5L I-4 Atkinson-cycle engine to work with the electric traction motor, the electronically controlled Continuously Variable Transmission, and the 275-volt sealed nickel-metal-hydrate (NiMH) battery pack, powering

Fusion Hybrid with up to **191 NET HP**. Regenerative Braking helps keep the battery pack charged. Inside, 85% post-industrial yarns help create our exclusive **SUSTAINABLE** cloth-trimmed seats. Plus, Fusion Hybrid meets California's strict Advanced Technology Partial Zero Emissions Vehicle (AT-PZEV) requirements.<sup>2</sup> So you can breathe easy while getting up to **41 MPG** in the city. Drive on.

<sup>1</sup>Based on EPA-estimated 41 mpg city, 17.5-gallon tank. Actual mileage will vary. <sup>2</sup>AT-PZEV is a rating approved by the California Air Resources Board. Vehicles sold in federally regulated states meet the Environmental Protection Agency's Tier 2/ Bin (3) emissions standards.

GROWS LEAVES SO YOU CAN

# Get Your Game On.



| Fusion Hybrid SmartGauge with EcoGuide in Engage mode |

#### 4 DISPLAY MODES EVOLVE WITH YOU.

Our exclusive new SmartGauge™ with EcoGuide features 2 dramatic 4.3" LCD screens flanking the luminous speedometer in Fusion Hybrid. Choose your level of info by setting the display to "Inform," "Enlighten," "Engage" or "Empower" yourself. Steering wheel-mounted controls make it easy to explore and change up.

#### CUSTOMIZABLE GAUGES INFORM YOU.

A built-in tutorial takes you through the 4 display modes, explaining your options within each. Set your efficiency gauge style, choice of 3 languages, units of measurement and more.

#### EFFICIENCY FOREST REWARDS YOU.

Fusion Hybrid is the first in its class<sup>1</sup> to grow leaves. Drive efficiently: watch your forest grow. Stomp on the gas: see it fade. More leaves = more mpg. This green motivator inspires during any of the 4 display modes.

<sup>1</sup>Midsized Sedan class.

# Turns Up the Heat.

THE NEW FUSION SPORT.



| Fusion Sport in Sport Blue Metallic |

Get ready to throw down with **263 HP**. Fusion Sport backs its bold attitude with an intense new 3.5L V6 engine and our smart new 6-speed **SELECTSHIFT AUTOMATIC™** transmission. With SelectShift, you can fly through the gears yourself, or leave the fun to Fusion. The taut ride, sharp cornering and road-grabbing skills are courtesy of its modified **SPORT-TUNED SUSPENSION**. All-season tires and muscular **18" WHEELS** transfer power to the pavement. And the **ATHLETE'S STANCE**? No training required. Every Sport hits the street with aggressive front-end styling, sweet rocker moldings, gleaming chrome accents, dual chrome exhaust tips, and a sporty decklid spoiler. Inside, you'll find dynamic leather-

trimmed seats with 8-way power for the driver. Colorful accents or sleek monotone with contrast stitching: it's up to you. There are no wrong turns in Fusion Sport.



| Fusion Sport in Charcoal Black with Sport Blue inserts and available equipment |

# VIBRANT SCREEN WOWS ALL AROUND.

## NAVIGATION WITH SIRIUS TRAVEL LINK.<sup>TM</sup> VOICE-ACTIVATED EASE.

Displayed on a massive 8" LCD touch screen, the available new Navigation System features easy voice activation for everything from driving directions to accessing tunes. It also provides nearly 10 gigabytes of storage space for photos and music (up to 2400 songs). Class-exclusive SIRIUS Travel Link keeps you in the know with up-to-the-minute local traffic, weather, fuel prices, sports and movie listings.<sup>1</sup> All at your fingertips.

## SIRIUS<sup>®</sup> SATELLITE RADIO. 130+ COAST-TO-COAST CHANNELS.

Standard on Fusion SE, SEL, Sport and Hybrid, SIRIUS Satellite Radio<sup>1</sup> comes with a 6-month subscription to get you started surfing over 130 channels of sports, news, entertainment and 100% commercial-free music, coast-to-coast.

## You talk. SYNC listens.<sup>TM</sup>

### FORD SYNC<sup>®</sup> WITH 911 ASSIST.<sup>TM</sup> PLUS, NEW TRAFFIC, DIRECTIONS AND INFORMATION.

Our available Ford SYNC system, developed in association with Microsoft,<sup>®</sup> works with your paired Bluetooth<sup>®</sup>-enabled mobile phone and your digital media player or thumb drive to make calls, play music and more – all with the touch of a button or a simple voice command.<sup>2</sup>

The latest version of SYNC also features these convenient Driver Services:

- 911 Assist • Vehicle Health Reports • Up-to-the-minute weather<sup>3</sup>
- Traffic alerts<sup>3</sup> • Turn-by-turn directions<sup>3</sup> • Business searches<sup>3</sup>
- Personalized business, sports and entertainment news, and more<sup>3</sup>

With 911 Assist, the system can make an emergency call from your phone if any airbag has deployed.<sup>4</sup> And, unlike other systems that send you to a call center first, SYNC connects you directly to a 911 operator. For all the latest details, visit [SyncMyRide.com](http://SyncMyRide.com).



<sup>1</sup>Real-time traffic monitoring available in select markets. Some features are unavailable while driving. Service available in the 48 contiguous states and Washington, D.C. SIRIUS is a registered trademark of SIRIUS XM Radio Inc. Subscriptions governed by SIRIUS Terms and Conditions at [sirius.com/serviceterms](http://sirius.com/serviceterms). <sup>2</sup>Driving while distracted can result in loss of vehicle control. Only use mobile phones and other devices, even with voice commands, when it is safe to do so. Microsoft is a registered trademark of Microsoft Corporation. The Bluetooth word mark is a trademark of the Bluetooth SIG, Inc. <sup>3</sup>These SYNC services not available with optional Navigation System. See your dealer for details. <sup>4</sup>The vehicle's electrical system (including the battery), the wireless service provider's signal, and a connected mobile phone must all be available and operating for 911 Assist to function properly. These systems may become damaged in a crash. The paired mobile phone must be turned on, connected to SYNC, and the 911 Assist feature enabled in order for 911 to be dialed.



Camry, Accord and Altima Can't Beat  
**Fusion Quality.**

| Fusion SEL in Charcoal Black with Charcoal Black inserts and available equipment |

It's a fact. Ford Fusion is in a dead heat with Camry, Accord and Altima when it comes to quality.<sup>1</sup> On style: it's clearly beyond compare. As evidenced by its **PRECISELY HONED INTERIOR**, Fusion is always ready to impress. Set yours aglow with available **AMBIENT LIGHTING** and choose from 7 hues to match your shoes, your tattoos or whatever you like.

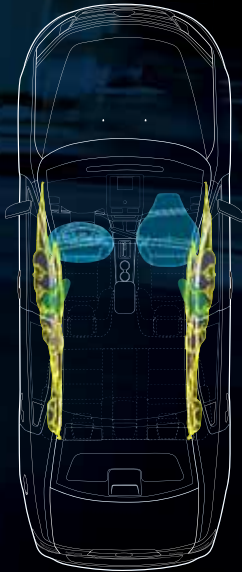
Fusion is the first midsize sedan in America to offer the awesome experience of a certified **SONY® AUDIO SYSTEM**. We're talking the very latest processing technology – Dolby® Automotive Entertainment Program (DAEP) 5.1 Surround Sound – bringing the home-theater performance of Dolby Pro Logic® II right into your Fusion. Imagine the rush as **390 WATTS** of continuous power make their way through **2 AMPLIFIERS** and **12 SPEAKERS** straight to your brain. Available exclusively with the Moon & Tune Package.

<sup>1</sup>Based on cumulative survey data of 2008 MY Ford and competitive owners at 3 months of service among vehicles registered between 9/07-5/08.



FUSION+HYBRID  2010

Every Fusion gets **6 AIRBAGS** standard, including the **DUAL-STAGE FRONT** airbags in our Personal Safety System,<sup>™</sup> **FRONT-SEAT SIDE** airbags and **2-ROW SIDE-CURTAIN** airbags.



Ford Fusion and Fusion Hybrid each earned 5 Stars<sup>®</sup> – the highest possible score – in frontal crash test ratings.

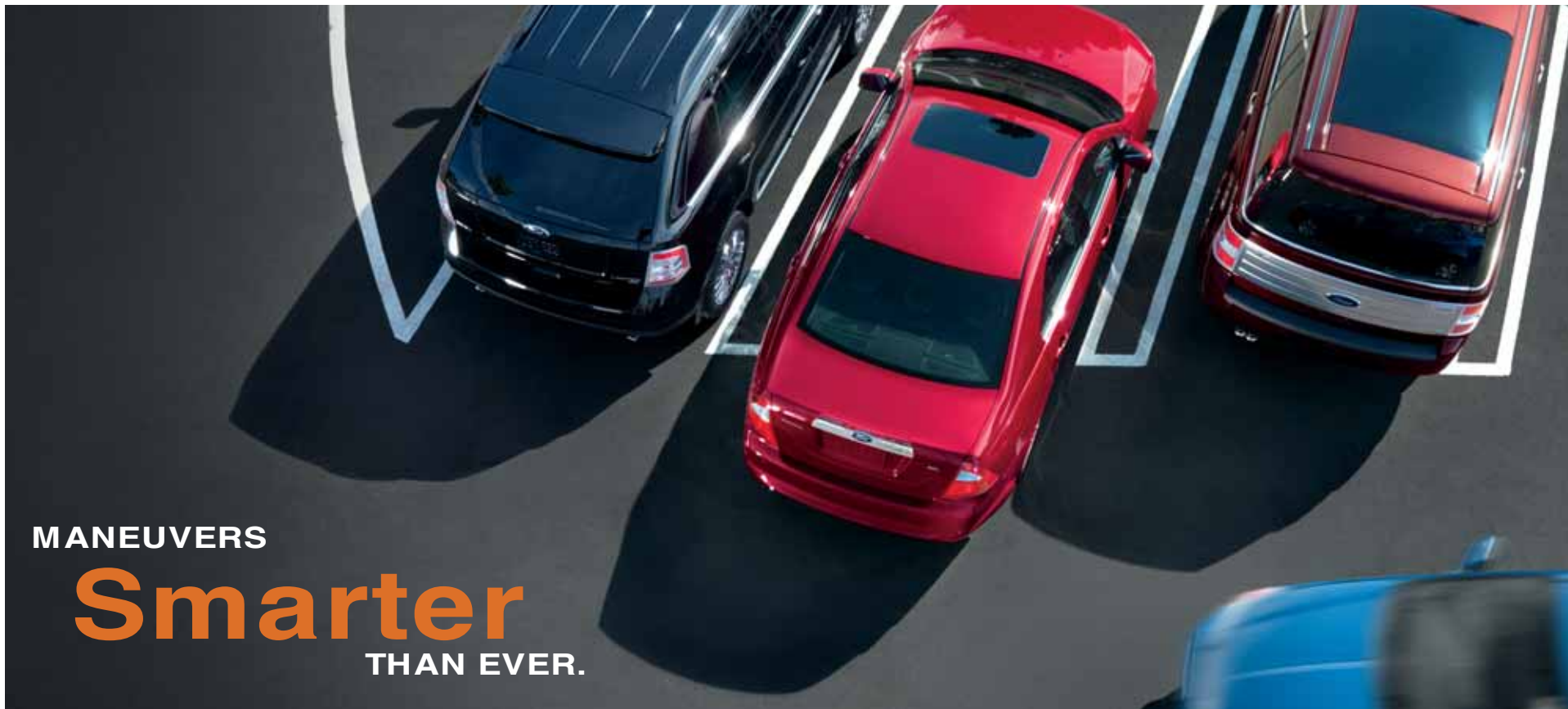
**Protects**  
**BETTER THAN EVER.**

| Fusion Sport in Brilliant Silver Metallic with available equipment |

An IIHS “**TOP SAFETY PICK**” for 3 years in a row,<sup>1</sup> Fusion has more standard safety features than ever for 2010. Brake Actuated **TRACTION CONTROL** joins our standard AdvanceTrac<sup>®</sup> **ELECTRONIC STABILITY CONTROL<sup>2</sup> (ESC)** to help you stay on track. According to a National Highway Traffic Safety Administration (NHTSA) study,<sup>3</sup> ESC reduced single-vehicle passenger car crashes by 35% compared to similar models without the technology.

Of course, you’ll also find 6 airbags standard on every Fusion, plus a unique new knee airbag for Fusion Hybrid drivers. The new **SOS POST-CRASH ALERT SYSTEM<sup>™4</sup>** flashes Fusion’s hazard lights and sounds the horn to attract help after an airbag has deployed or a safety belt pretensioner has activated in certain collisions. Fusion’s got you covered. All around.

<sup>1</sup>Insurance Institute for Highway Safety (IIHS) “Top Safety Pick” for 2008-2010 model years. <sup>2</sup>Remember that even advanced technology cannot overcome the laws of physics. It’s always possible to lose control of a vehicle due to inappropriate driver input for the conditions. <sup>3</sup>U.S. Dept. of Transportation study, Sept. 2004 ([www.nhtsa.gov](http://www.nhtsa.gov)). <sup>4</sup>SOS hardware may become damaged or the battery may lose power during a crash, which could prevent operation. Not all crashes will activate an airbag or safety belt pretensioner. <sup>5</sup>Star ratings are part of the U.S. Department of Transportation’s Safercar.gov program ([www.safercar.gov](http://www.safercar.gov)).



MANEUVERS  
**Smarter**  
THAN EVER.



**REAR VIEW CAMERA  
SHOWS YOU WHAT'S BACK THERE.**

For visual assistance, a new Rear View Camera is available as part of the Driver's Vision Package and the Electronics Package. It puts a full-color image in the rearview mirror (on models without Navigation), or on the 8" screen of the available Navigation System. The available Reverse Sensing System sounds a warning to alert you of certain objects behind the vehicle as you slowly back up.

**BLIS® WITH CROSS TRAFFIC ALERT  
WARNS YOU WITH SIGHT AND SOUND.**

Fusion is the only vehicle in its class<sup>1</sup> to offer the available new BLIS (Blind Spot Information System) with Cross Traffic Alert. When BLIS detects a vehicle in your blind spot, it flashes an amber light in your sideview mirror. Cross Traffic Alert sounds a warning when it detects a vehicle approaching either side of Fusion while you're slowly moving in Reverse.



<sup>1</sup>Midsize Sedan class.



## Steps It Up.

When it comes to looks, Fusion gives you plenty of choices. Go with the available **APPEARANCE PACKAGE** or **MONOCHROME APPEARANCE PACKAGE** (shown above) to take your Fusion SE or SEL from hot to scorching. The transformation begins with dynamic **18" WHEELS** wrapped in V-rated performance tires matched to a **SPORT-TUNED SUSPENSION** for taut handling and a more athletic ride. Both packages also add a slick **SPOILER** and **EXCLUSIVE INTERIOR** touches. Prefer a body-color grille? The Monochrome Appearance Package is your perfect fit. Check out the Specs for complete package contents.

# Spoils You

WITH TECH TREATS.

Every Fusion is **WELL-EQUIPPED** on the technical front with a remote keyless-entry system, an anti-theft perimeter alarm, speed-sensitive windshield wipers, power-adjustable sideview mirrors, and even a Tire Pressure Monitoring System, all standard. Inside, you'll find the **CONVENIENCE** of standard power door locks and windows with a one-touch-up/-down driver-window feature, a message center with trip computer, an audio input jack, and much more. Of course, you've also got lots of options to make Fusion **UNIQUELY YOURS**.

**Available Features:**

- A. 7-Color Ambient Lighting
- B. Heated Leather-Trimmed Front Seats
- C. Ford SYNC® with USB Port
- D. SYNC Steering Wheel-Mounted Controls
- E. Power Moonroof with Sunshade
- F. SecuriCode™ Keyless-Entry Keypad
- G. 110-Volt Power Point (standard on Hybrid only)
- H. 12-Speaker 390-Watt Sony® Audio System
- I. Easy Fuel™ Capless Fuel Filler (standard)



EXCELS IN STORAGE

# Versatility.

With up to **116.8 CU. FT.** of total interior volume,<sup>1</sup> the new Ford Fusion is more spacious than Malibu. Plus, it boasts **MORE TRUNK SPACE AND STORAGE VERSATILITY** than Malibu, Camry or Altima. The quick-release 60/40 split-folding rear seat on Fusion S, SE, SEL and Sport makes it easy to load bulkier items. Combine it with the available fold-flat front-passenger seat to **FIT ITEMS UP TO 9'** in length from trunk to dashboard.



A. Available 60/40 Split-Folding Rear Seat and Fold-Flat Front-Passenger Seat<sup>1</sup>

B. Up to 16.5-Cu.-Ft. Trunk Capacity<sup>1</sup>

C. Open Console Storage

D. Covered Center Floor Console (shown with available Ford SYNC<sup>®</sup>)

E. Door Storage/Beverage Holder

F. In-Dash Coin Tray

G. Dual Rear Beverage Holders

H. Covered Dash Storage



<sup>1</sup>Non-hybrid models.

# Specs



## DIMENSIONS & CAPACITIES

Exterior	
Wheelbase	107.4"
Length	190.6"
Height	56.9"
Width – Excluding mirrors	72.2"
Width – Including mirrors	80.1"

Interior	front/rear
Head room	38.7"/37.8"
Shoulder room	57.4"/56.5"
Hip room	54.0"/53.3"
Leg room	42.3"/37.1"

Capacities	Fusion/Fusion Hybrid
Passenger volume (cu. ft.)	100.3/99.8
Luggage capacity (cu. ft.)	16.5/11.8
Total interior volume (cu. ft.)	116.8/111.6
Fuel capacity (gal.)	
FWD	17.5
AWD	16.5

## HORSEPOWER, TORQUE AND 2010 EPA-ESTIMATED FUEL ECONOMY

2.5L Duratec® I-4 engine	
Horsepower	175 @ 6000 rpm
Torque (lb.-ft.)	172 @ 4500 rpm
6-speed automatic (S)	23 mpg city/34 hwy.
6-speed manual (S)	22 mpg city/31 hwy.
6-speed automatic (SE, SEL)	22 mpg city/31 hwy.
6-speed manual (SE)	22 mpg city/29 hwy.

3.0L Duratec V6 FFV engine <sup>2</sup>	
Horsepower	240 @ 6550 rpm
Torque (lb.-ft.)	223 @ 4300 rpm
6-speed SelectShift Automatic™	
FWD (SE, SEL)	18 mpg city/27 hwy.
AWD (SEL)	18 mpg city/25 hwy.

3.5L Duratec V6 engine	
Horsepower	263 @ 6250 rpm
Torque (lb.-ft.)	249 @ 4500 rpm
6-speed SelectShift Automatic	
FWD (Sport)	18 mpg city/27 hwy.
AWD (Sport)	17 mpg city/24 hwy.

2.5L iVCT Atkinson-cycle I-4 engine with Permanent-Magnet AC-synchronous electric motor	
Net horsepower	191
Electronically controlled Continuously Variable Transmission (eCVT)	41 mpg city/36 hwy.

## STANDARD

Mechanical
Front-wheel drive (FWD)
4-wheel disc Anti-lock Brake System (ABS)
Power rack-and-pinion steering
Stabilizer bars – 24-mm front and 16-mm rear (17-mm rear on V6)
Suspension – Front: independent Short- and Long-Arm
Suspension – Rear: multilink independent

Safety & Security
Personal Safety System™ for driver and front passenger includes dual-stage front airbags <sup>3</sup> safety belt pretensioners, safety belt energy-management retractors, safety belt usage sensors, driver-seat position sensor, crash severity sensor, restraint control module and Front-Passenger Sensing System
Front-seat side airbags <sup>3</sup>
2-row side-curtain airbags <sup>3</sup>
3-point safety belts for all seating positions
AdvanceTrac <sup>®</sup> electronic stability control <sup>4</sup> with Brake Actuated Traction Control
Anti-theft perimeter alarm
Battery saver
Belt-Minder <sup>®</sup> front safety belt reminder
Child-safety rear door locks
Emergency in-trunk release
Illuminated entry
LATCH – Lower anchors and tether anchors for child-safety seats
Remote keyless entry with integrated keyhead transmitters (2)
SecuriLock <sup>®</sup> passive anti-theft ignition system
Side-intrusion door beams
SOS Post-Crash Alert System™ <sup>5</sup>
Tire Pressure Monitoring System (excludes spare)

Seating
2-way manual front-passenger seat
5-passenger seating
60/40 split-folding spring-assisted rear seat (non-hybrid only)
Rear-seat fold-down center armrest with beverage holders (non-hybrid only)

Interior
6 beverage holders (4 in Hybrid)
12-volt power points (2)
Accessory delay for power features
Auxiliary audio input jack in center console
Cabin air filtration system
Dual sliding sun visors with mirrors
Full center console with armrest and two-tiered storage
Grocery bag hooks in trunk
In-dash storage compartment
Message center with trip computer
Overhead console with dome and map lights (not available with moonroof)
Power door locks
Power trunk release
Power windows with one-touch-up/-down driver-window feature
Tilt/telescoping steering column

Exterior
Bright-chrome 3-bar grille
Easy Fuel™ capless fuel filler
Power sideview mirrors
Quad-beam halogen headlamps
Solar-tinted glass
Speed-sensitive windshield wipers

**New Vehicle Limited Warranty.** We want your Ford Fusion or Fusion Hybrid ownership experience to be the best it can be. So under this warranty, your new vehicle comes with 3-year/36,000-mile Bumper-to-Bumper Coverage, 5-year/60,000-mile Powertrain Warranty Coverage, 5-year/50,000-mile Safety Restraint Coverage, and 5-year/unlimited-mile Corrosion (Perforation) Coverage – all with no deductible. Fusion Hybrid is also covered by an 8-year/100,000-mile Hybrid Limited Warranty.<sup>6</sup> Please ask your Ford Dealer for copies of these limited warranties.

**Roadside Assistance.** Covers your vehicle for 5 years or 60,000 miles, so you have the security of knowing that help may be only a phone call away should you run out of fuel, lock yourself out of the vehicle, or need towing. Your Ford Dealer can provide complete details on all of these advantages.

**Ford Credit.** Get the ride you want. Whether you plan to lease or finance, you'll find the choices that are right for you at Ford Credit. Ask your Ford Dealer for details or check us out at fordcredit.com.

**Ford Extended Service Plan.** For a purchase or lease, the Ford Extended Service Plan (ESP) gives you "Peace-of-Mind" protection designed to cover key vehicle components and protect you from the cost of unexpected repairs. Ask your dealer for a Ford ESP, the only service contract backed exclusively by Ford and honored at all Ford Lincoln Mercury dealerships.

**Insurance Services.** Get Ford Motor Company quality in your auto insurance. Our program offers industry-leading benefits and competitive rates. Call 1-877-367-3847, or visit us at fordvip.com for a no-obligation quote. Insurance offered by American Road Services Company (in CA, American Road Insurance Agency), a licensed agency and subsidiary of Ford Motor Company.

Comparisons based on 2009 competitive models (Midsize Sedan class), publicly available information and Ford certification data at time of release. Some features discussed may be optional. Vehicles shown may contain optional equipment. Features shown may be offered only in combination with other options or subject to additional ordering requirements or limitations. Dimensions shown may vary due to optional features and/or production variability. Following release of this PDF, certain changes in standard equipment, options and the like, or product delays may have occurred which would not be included in these pages. Your Ford Dealer is the best source for up-to-date information. Ford Division reserves the right to change product specifications at any time without incurring obligations.

Sony is a registered trademark of Sony Corporation.  
Dolby and Pro Logic are registered trademarks of Dolby Laboratories.

© 2009 Ford Motor Company

10FUSJ2WEBPDF

<sup>1</sup>36.7" on Fusion Hybrid.

<sup>2</sup>Fuel economy when operating on E85 will yield different values than gasoline. See *Fuel Economy Guide* for more information.

<sup>3</sup>Always wear your safety belt and secure children in the rear seat.

<sup>4</sup>Remember that even advanced technology cannot overcome the laws of physics. It's always possible to lose control of a vehicle due to inappropriate driver input for the conditions.

<sup>5</sup>SOS hardware may become damaged or the battery may lose power in a crash, which could prevent operation.

Not all crashes will activate an airbag or safety belt pretensioner.

<sup>6</sup>10-year/150,000-mile Hybrid Battery Limited Warranty in California, Connecticut, Maine, Massachusetts, New Jersey, New York, Rhode Island and Vermont. See dealer for details.

# Specs



## FUSION S

Equipped with all standard features, plus:

### Rapid Spec 100A

2.5L DOHC Duratec® I-4 engine  
6-speed manual transmission  
16" 5-spoke painted-aluminum wheels  
P205/60R16 all-season tires  
4-way manual driver seat  
Single-zone manual air conditioning  
AM/ FM stereo/ single-CD player with MP3 capability and 4 speakers  
Manual day/ night rearview mirror  
Single exhaust

### Available Option

6-speed automatic transmission  
Front and rear carpeted floor mats



## FUSION SE

Equipped with all standard S features, plus:

### Rapid Spec 200A

17" 5-spoke-design steel wheels with silver-painted covers  
P225/ 50R17 all-season tires  
6-way power driver seat with manual lumbar  
Fold-flat front-passenger seat  
Front and rear carpeted floor mats  
Driver and front-passenger seatback map pockets  
Dual sliding sun visors with illuminated mirrors  
AM/ FM stereo/ single-CD player with MP3 capability and 6 speakers  
SIRIUS® Satellite Radio<sup>1</sup> with 6-month subscription  
Single exhaust with dual chrome tips  
Body-color, power sideview mirrors  
Bright beltline  
Fog lamps

### Available Option Groups

**Appearance Package:** 18" machined-aluminum wheels with painted pockets, P225/45R18 V-rated performance tires, sport-tuned suspension, chrome fog lamp bezels, rear decklid spoiler, Charcoal Black interior, leather-wrapped steering wheel and shift knob, unique finish on center stack, and unique cloth seats and door-trim inserts

**Monochrome Appearance Package:** same content as **Appearance Package +** body-color grille

**Rapid Spec 201A:** Ford SYNC® voice-activated communications and entertainment system,<sup>2</sup> and auto-dimming rearview mirror with microphone and compass

**Rapid Spec 202A: Sun & SYNC Package –** Power tilt-and-slide moonroof, auto-dimming rearview mirror with microphone and compass, and Ford SYNC

### Available Options

3.0L V6 FFV engine with 6-speed SelectShift Automatic™ transmission  
6-speed automatic transmission (2.5L I-4)  
Rear spoiler  
Reverse Sensing System  
White Platinum Metallic Tri-Coat paint



## FUSION SEL

Equipped with all standard SE features, plus:

### Rapid Spec 300A

6-speed automatic transmission  
17" 5-spoke machined-aluminum wheels  
P225/ 50R17 V-rated all-season tires  
8-way power driver seat  
6-way power front-passenger seat  
Leather-trimmed seats  
Heated front seats  
Ambient Lighting  
Auto-dimming rearview mirror with microphone and compass  
Dual-zone Electronic Automatic Temperature Control  
Steering wheel-mounted cruise and audio controls  
Ford SYNC voice-activated communications and entertainment system  
Automatic headlamps  
SecuriCode™ keyless-entry keypad  
Body-color, power, heated sideview mirrors with security approach lamps

### Available Option Groups

**Appearance Package** (with leather-trimmed seats)

**Monochrome Appearance Package** (with leather-trimmed seats)

**Rapid Spec 301A: Moon & Tune Package –** Power tilt-and-slide moonroof, and Sony® Audio System with DAEP 5.1 Surround Sound, AM/ FM stereo/ 6-disc in-dash CD changer, MP3 capability, 12 speakers and 390 watts

**Rapid Spec 302A: Moon & Tune Package + Driver's Vision Package –** BLIS® (Blind Spot Information System) with Cross Traffic Alert and Rear View Camera + Reverse Sensing System

### Available Options

3.0L V6 FFV engine with 6-speed SelectShift Automatic transmission  
All-Wheel Drive (3.0L V6 only)  
Hard drive-based, voice-activated Navigation System featuring SIRIUS Travel Link™<sup>3</sup> (with complimentary 6-month subscription) and nearly 10 gigabytes of digital storage for pictures and music; includes Sony Audio System with DAEP 5.1 Surround Sound, AM/ FM stereo/ single-CD/ DVD, MP3 capability, 12 speakers and 390 watts<sup>4</sup>  
Premium front and rear floor mats  
Rear spoiler  
Reverse Sensing System  
White Platinum Metallic Tri-Coat paint



## FUSION SPORT

Equipped with all standard SE features, plus:

### Rapid Spec 400A

3.5L V6 engine with 6-speed SelectShift Automatic transmission  
18" 5-spoke painted-aluminum wheels  
P225/45R18 V-rated all-season tires  
8-way power driver seat  
Auto-dimming rearview mirror with compass and microphone  
Ford SYNC voice-activated communications and entertainment system  
Leather-trimmed seats available with either Charcoal Black, Red or Blue seat and door-trim inserts  
Leather-wrapped steering wheel  
Steering wheel-mounted cruise and audio controls  
Unique appliques on center stack and dash available in Slate, Red or Blue  
Chrome-accented exterior trim  
Dual chrome exhaust tips  
Rear spoiler  
Side rocker moldings  
Sport-tuned suspension

### Available Option Groups

**Rapid Spec 401A: Moon & Tune Package**

**Rapid Spec 402A: Moon & Tune Package + Electronics Package –** BLIS (Blind Spot Information System) with Cross Traffic Alert, Rear View Camera, 6-way power passenger seat, heated front seats, Dual-zone Electronic Automatic Temperature Control, Ambient Lighting, automatic headlamps, heated sideview mirrors with security approach lamps, and SecuriCode keyless-entry keypad + Reverse Sensing System

### Available Options

All-Wheel Drive (AWD)  
Hard drive-based, voice-activated Navigation System featuring SIRIUS Travel Link (with complimentary 6-month subscription) and nearly 10 gigabytes of digital storage for pictures and music; includes Sony Audio System with DAEP 5.1 Surround Sound, AM/ FM stereo/ single-CD/ DVD, MP3 capability, 12 speakers and 390 watts<sup>5</sup>  
Premium front and rear floor mats  
Reverse Sensing System



## FUSION HYBRID

Equipped with all standard I-4 SEL features, plus:

### Rapid Spec 500A

2.5L iVCT I-4 Atkinson-cycle engine with Permanent-Magnet AC-synchronous electric motor  
Electronically controlled Continuously Variable Transmission (eCVT)  
275-volt sealed nickel-metal-hydride (NiMH) battery  
17" 15-spoke painted-aluminum wheels  
P225/ 50R17 V-rated all-season tires  
110-volt power point  
SmartGauge™ with EcoGuide instrument cluster with 2 configurable LCD screens and message center  
AM/ FM stereo/ 6-disc in-dash CD changer, MP3 capability and 6 speakers  
Driver knee airbag<sup>6</sup>  
Fixed rear seat  
Eco-friendly cloth seating  
Regenerative Braking System  
Reverse Sensing System

### Available Option Groups

**Rapid Spec 501A: Moon & Tune Package + Driver's Vision Package**

**Rapid Spec 502A: Moon & Tune Package + Driver's Vision Package +** Leather-trimmed seats with heated front seats + Hard drive-based, voice-activated Navigation System featuring SIRIUS Travel Link (with complimentary 6-month subscription) and nearly 10 gigabytes of digital storage for pictures and music; includes Sony Audio System with DAEP 5.1 Surround Sound, AM/ FM stereo/ single-CD/ DVD, MP3 capability, 12 speakers and 390 watts

### Available Options

Hard drive-based, voice-activated Navigation System featuring SIRIUS Travel Link (with complimentary 6-month subscription) and nearly 10 gigabytes of digital storage for pictures and music; includes Sony Audio System with DAEP 5.1 Surround Sound, AM/ FM stereo/ single-CD/ DVD, MP3 capability, 12 speakers and 390 watts<sup>4</sup>  
Leather-trimmed seats with heated front seats<sup>4</sup>  
Premium front and rear floor mats  
White Platinum Metallic Tri-Coat paint

<sup>1</sup>Service available in the 48 contiguous states and Washington, D.C. SIRIUS is a registered trademark of SIRIUS XM Radio Inc. Subscriptions governed by SIRIUS Terms and Conditions at [sirius.com/service/terms](http://sirius.com/service/terms).

<sup>2</sup>Driving while distracted can result in loss of vehicle control. Only use mobile phones and other devices, even with voice commands, when it is safe to do so.

<sup>3</sup>Real-time traffic monitoring available in select markets.

Some features are unavailable while driving. Service available in the 48 contiguous states and Washington, D.C.

<sup>4</sup>Requires Rapid Spec 302A.

<sup>5</sup>Requires Rapid Spec 402A.

<sup>6</sup>Always wear your safety belt and secure children in the rear seat.

## Exterior COLORS



Sangria Red Metallic



Sport Blue Metallic



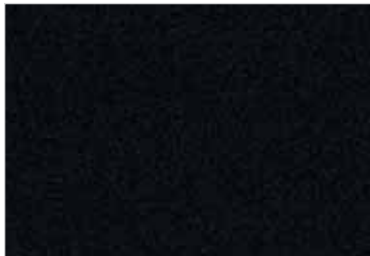
Sterling Grey Metallic



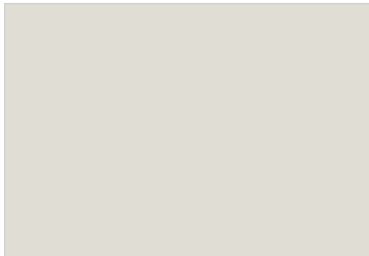
Smokestone Metallic



Light Ice Blue Metallic



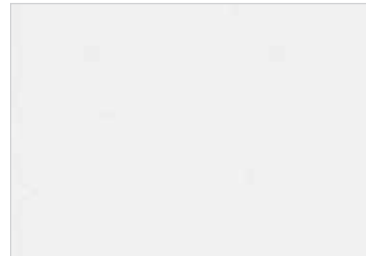
Tuxedo Black Metallic



White Suede



Atlantis Green Metallic



White Platinum Metallic Tri-Coat



Brilliant Silver Metallic

	Interior Colors
<b>S</b>	
Sangria Red Metallic	●
Smokestone Metallic	●
Tuxedo Black Metallic	●
White Suede	●
Brilliant Silver Metallic	●

	Interior Colors
<b>SE</b>	
Sangria Red Metallic	● ● ●
Sport Blue Metallic	● ● ●
Sterling Grey Metallic	● ● ●
Smokestone Metallic	● ● ●
Tuxedo Black Metallic	● ● ●
White Suede	● ● ●
Atlantis Green Metallic	● ● ●
White Platinum Metallic Tri-Coat <sup>1</sup>	● ● ●
Brilliant Silver Metallic	● ● ●

	Interior Colors
<b>SEL</b>	
Sangria Red Metallic	● ● ● ●
Sport Blue Metallic	● ● ● ●
Sterling Grey Metallic	● ● ● ●
Smokestone Metallic	● ● ● ●
Tuxedo Black Metallic	● ● ● ●
White Suede	● ● ● ●
Atlantis Green Metallic	● ● ● ●
White Platinum Metallic Tri-Coat <sup>1</sup>	● ● ● ●
Brilliant Silver Metallic	● ● ● ●

	Interior Colors
<b>Sport</b>	
Sangria Red Metallic	● ●
Sport Blue Metallic	● ●
Tuxedo Black Metallic	● ●
Atlantis Green Metallic	● ●
Brilliant Silver Metallic	● ●
<b>Hybrid</b>	
Sterling Grey Metallic	● ●
Light Ice Blue Metallic	● ●
Tuxedo Black Metallic	● ●
Atlantis Green Metallic	● ●
White Platinum Metallic Tri-Coat <sup>1</sup>	● ●
Brilliant Silver Metallic	● ●

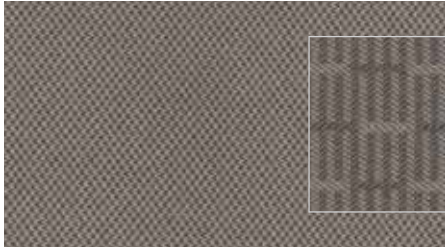
**INTERIORS:** ● Medium Light Stone ● Charcoal Black  
 ● Camel ● Appearance Packages ● Sport Red  
 ● Sport Blue

<sup>1</sup>Extra-cost option.

Colors shown are representative only. Not all colors are available on all models. See your dealer for actual paint/trim options.



# Interior COLORS



Cloth – Medium Light Stone with Medium Light Stone inserts  
Standard on S and SE



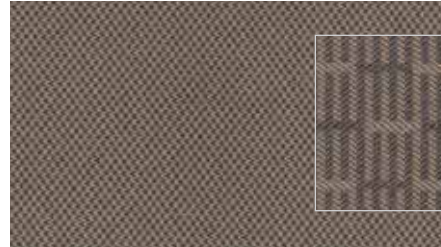
Brushed-Aluminum  
accents



Cloth – Charcoal Black with Charcoal Black inserts  
Standard on SE



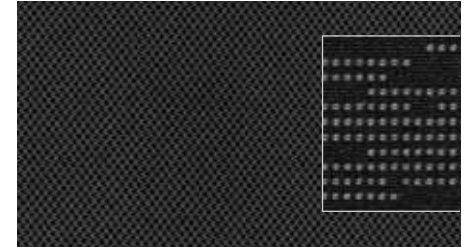
Brushed-Aluminum  
accents



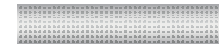
Cloth – Camel with Camel inserts  
Standard on SE



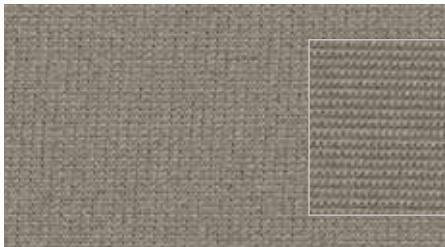
Brushed-Aluminum  
accents



Cloth – Charcoal Black with Charcoal Black inserts  
Appearance Packages on SE



Square Dot accents



Cloth – Medium Light Stone with Medium Light Stone inserts  
Standard on Hybrid



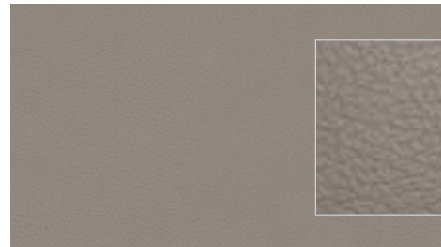
Silver Carbon Weave accents



Cloth – Charcoal Black with Charcoal Black inserts  
Standard on Hybrid



Silver Carbon Weave accents

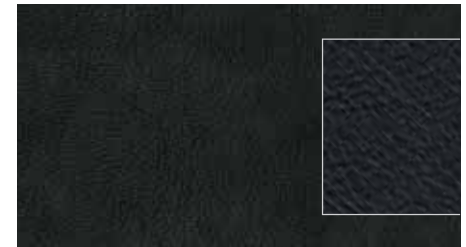


Leather – Medium Light Stone with Medium Light Stone inserts  
Standard on SEL, Available on Hybrid



Black Carbon Weave accents  
SEL

Silver Carbon Weave accents  
Hybrid



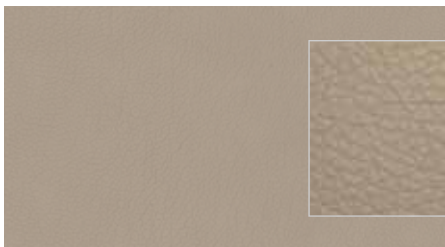
Leather – Charcoal Black with Charcoal Black inserts  
Standard on SEL, Available on Hybrid



Black Carbon Weave accents  
SEL

Square Dot accents  
Appearance Packages on SEL

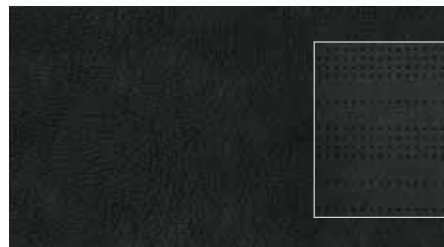
Silver Carbon Weave accents  
Hybrid



Leather – Camel with Camel inserts  
Standard on SEL



Woodgrain accents



Leather – Charcoal Black with Charcoal Black perforated inserts  
Standard on Sport



Polished Slate accents



Leather – Charcoal Black with Sport Blue perforated inserts  
Standard on Sport



Blue Racer accents



Leather – Charcoal Black with Sport Red perforated inserts  
Standard on Sport



Cherry Red accents

# Wheels

16" 5-Spoke Painted-Aluminum  
Standard on S



17" 5-Spoke-Design Steel with Silver-Painted Cover  
Standard on SE



17" 5-Spoke Machined-Aluminum  
Standard on SEL



18" Machined-Aluminum  
with Painted Pockets  
Appearance Packages on SE and SEL



18" 5-Spoke Painted-Aluminum  
Standard on Sport



17" 15-Spoke Painted-Aluminum  
Standard on Hybrid

## THE FACTS ABOUT FORD.



### Drive quality.

**FACT:** On top of earning 8 *Consumers Digest* "Best Buy" awards for 2009 models, Ford Motor Company is **unsurpassed** by Toyota and Honda when it comes to quality.<sup>1</sup>



### Drive green.

**FACT:** Ford builds the **most fuel-efficient midsize sedan** in America (Fusion Hybrid: 41 mpg city)<sup>2</sup> and the **most fuel-efficient SUV** on the planet (Escape Hybrid: 34 mpg city)<sup>3</sup>



### Drive safe.

**FACT:** No other car company offers you more vehicles that have received both 2009 IIHS "Top Safety Pick" and NHTSA 5-Star crash test ratings.<sup>4</sup>



### Drive smart.

**FACT:** The voice-activated **Ford SYNC**® customizable media system and **EcoBoost™ V6 engines** are just a few of the innovative technologies you can only find in a Ford.

Visit [fordvehicles.com](http://fordvehicles.com) to learn more.



Drive one.

<sup>1</sup>Based on RDA Group's GQRS cumulative survey at 3 months of service in 3 surveys of 2008 MY Ford and competitive owners conducted 9/07-5/08. <sup>2</sup>EPA-estimated 23 mpg city/34 hwy., 27 combined mpg, Fusion S I-4 automatic; 41 mpg city/36 hwy., Fusion Hybrid. Actual mileage will vary. Midsize class per R. L. Polk & Co. <sup>3</sup>Based on unadjusted city fuel economy from EPA (10/08) and VCA (5/08). 2009 EPA-estimated 34 mpg city/31 hwy. for Escape Hybrid FWD. Excluding vehicles built for Mazda. <sup>4</sup>Based on NHTSA 5-Star ratings for all 4 crash test categories. Star ratings are part of the U.S. Department of Transportation's Safercar.gov program ([www.safercar.gov](http://www.safercar.gov)).