


09

 **CHEVY SILVERADO**



## AMERICA'S BEST TRUCK.

Meet the 2009 Silverado and Silverado HD from the family of Chevy Trucks – the most dependable, longest-lasting trucks on the road.<sup>1</sup> | Silverado Half-Ton has the 2008 **LOWEST COST OF OWNERSHIP OF ANY FULL-SIZE PICKUP**<sup>2</sup> | The available 315-hp Vortec 5.3L V8 offers **BETTER V8 FUEL ECONOMY THAN ANY COMPETITOR**<sup>3</sup> | Chevy Silverado has been honored with the **BEST PROJECTED RESALE VALUE** award of any new full-size pickup two years running.<sup>4</sup> | Silverado Hybrid – **AMERICA'S FIRST TWO-MODE HYBRID FULL-SIZE PICKUP** – is scheduled to begin production late 2008 with limited availability. | 1500 models earned a five-star frontal and side-impact crash test rating.<sup>5</sup> | Chevy Silverado 1500 Light Duty has been recognized, honored and ranked **"HIGHEST RANKED LARGE PICKUP IN INITIAL QUALITY"**<sup>6</sup> by J.D. Power and Associates. | Every 2009 Silverado is backed by the **BEST COVERAGE IN AMERICA:** a transferable 100,000 mile/5-year<sup>7</sup> Powertrain Limited Warranty, plus Roadside Assistance and Courtesy Transportation. Chevy Silverado. America's Best Truck.



1 Dependability based on longevity: 1981-July 2007 full-line light-duty truck company registrations. Excludes other GM divisions. 2 Based on *Vincentric's* 2008 Model Level Analysis. 3 Based on 2008 GM Large Pickup segment and Silverado 2WD with an EPA estimated MPG 14 city/20 hwy. Excludes other GM vehicles. 2009 competitive data not available at time of printing. 4 Based on *Automotive Lease Guide's* 2007 and 2008 Residual Value Awards. Excludes other GM vehicles. 2009 competitive data not available at time of printing. 5 Side-impact crash test is for models tested with and without optional head-curtain side air bags (SABs). Government star ratings are part of the National Highway Traffic Safety Administration's (NHTSA's) New Car Assessment Program ([www.safercar.gov](http://www.safercar.gov)). 6 Chevrolet Silverado LD received the lowest number of problems per 100 vehicles among large pickups in the proprietary J.D. Power and Associates 2008 Initial Quality Study.<sup>SM</sup> Study based on responses from 81,530 new-vehicle owners, measuring 344 models and measures opinions after 90 days of ownership. Proprietary study results are based on experiences and perceptions of owners surveyed in February-April 2008. Your experiences may vary. Visit [jdpower.com](http://jdpower.com). 7 Whichever comes first. See dealer for details.





## REAL TRUCK. REAL FUEL SOLUTIONS.

Chevrolet offers the most fuel-efficient full-size V8 pickup on the road today.<sup>1</sup> A bold statement, but one we're prepared to back up. | The available Vortec 5.3L V8 engine features Active Fuel Management technology that helps it offer an EPA estimated MPG 20 highway. That's **BETTER V8 FUEL ECONOMY THAN ANY COMPETITOR**; which helps Silverado deliver the **LOWEST ANNUAL FUEL COST OF ANY FULL-SIZE V8 PICKUP**! Lower than Ford. Lower than Dodge. Lower than Toyota. | Taking this commitment to fuel efficiency one step further is **SILVERADO XFE** (extended fuel economy), **XFE** which arrives late this fall. XFE is designed and engineered specifically to improve miles per gallon and will offer the **BEST AVAILABLE V8 FUEL ECONOMY IN A FULL-SIZE PICKUP**<sup>2</sup> – an EPA estimated MPG 15 city/21 highway. | Then there's **Silverado Hybrid**, scheduled to begin production late 2008 with limited availability. It will be **AMERICA'S FIRST TWO-MODE HYBRID FULL-SIZE PICKUP**, and it will offer up to 50% better city fuel economy over the non-hybrid Silverado.<sup>3</sup> Head to [chevy.com/silverado](http://chevy.com/silverado) to see all the details.



1 Based on 2008 GM Large Pickup segment, latest available competitive information and Silverado 2WD EPA estimated MPG 14 city/20 hwy. Excludes other GM vehicles. 2 Based on 2008 GM Large Pickup segment and latest available competitive information. Excludes other GM vehicles. 3 Based on Silverado Hybrid 2WD EPA estimated MPG 21 city.



**FUEL EFFICIENCY** Active Fuel Management technology helps the Vortec 5.3L V8 deliver power when you need it. In situations where extra power is not needed, such as cruising down the highway on level roads, Active Fuel Management deactivates four of the eight cylinders with seamless precision.



The available Vortec 5.3L V8 engine offers 315 hp and better V8 fuel economy than any competitor!

## EXTRAORDINARY ABILITY. PRACTICAL APPLICATIONS.

With 13,000 LBS. OF UNRIVALED STANDARD HEAVY-DUTY TRAILERING CAPACITY, Silverado HD ensures that you'll never look longingly at another trailer again. | Thick, strong rear axles – 11.5-inch on HD models with the available Duramax Diesel and 9.5-inch on 1500 models equipped with the available MAX Trailering Pack – offer the broad shoulders necessary to carry and pull the biggest loads. | An available ABS-integrated trailer brake controller helps manage unruly trailers. | Two available towing packages – including the MAX Trailering Pack on 1500 models, which provides CLASS-LEADING EXTENDED AND CREW CAB TOWING CAPACITY<sup>1</sup> – give you the gear to do some serious pulling. | Tow/Haul mode enhances performance while pulling a trailer or hauling heavy loads. | Available Ultrasonic Rear Parking Assist<sup>2</sup> | NEW AVAILABLE REARVIEW CAMERA SYSTEM<sup>2</sup> | Two available types of camper mirrors. | See pages 38–40 for a complete breakdown of Silverado and Silverado HD trailering capabilities.

<sup>1</sup>Based on 2008 GM Large Pickup segment. Excludes other GM vehicles. <sup>2</sup>Extended or Crew Cab LT and LTZ models only. Requires the available Safety Package.

BEFORE THE BIG TOW, MAKE SURE YOU CAN TAKE IT SLOW – WITH GRADE-BRAKING. SIX-SPEED TRANSMISSION AUTOMATICALLY DOWNSHIFTS TO HELP SLOW THE TRUCK WHEN THE DRIVER APPLIES THE BRAKES WHILE DESCENDING LONG, STEEP GRADES.



Silverado 3500HD Big Dooley Crew Cab Long Box LT 4x4 pickup in Black. Shown with available features.



## 5-STAR CRASH SAFETY ON BOARD. ONSTAR ON CALL.



2009 SILVERADO 1500 –  
FIVE-STAR FRONTAL AND SIDE-  
IMPACT CRASH TEST RATING<sup>1</sup>

**STABILITRAK ELECTRONIC STABILITY CONTROL SYSTEM** – now standard on 1500 LS, LT, LTZ and V8-equipped WT models – helps improve vehicle stability, particularly during emergency maneuvers. | In these situations, the system applies brake pressure and, if necessary, adjusts engine torque to help the driver get the vehicle back on track. | **ONSTAR WITH A ONE-YEAR SAFE & SOUND PLAN<sup>2</sup> IS STANDARD IN ALL MODELS.** | An OnStar Advisor is always ready to help in a variety of situations, whether you've locked your keys in your car,<sup>3</sup> you have a flat tire or your air bags<sup>4</sup> have deployed. | With **AUTOMATIC CRASH RESPONSE**, sensors in your truck will automatically alert OnStar in certain types of crashes. An OnStar Advisor will immediately call into your vehicle to see if you're okay, pinpoint your exact location and send emergency responders even if you can't ask for help. | With **AUTOMATIC AIR BAG DEPLOYMENT RESPONSE**, built-in crash sensors around your vehicle can automatically send a signal to OnStar. An

Advisor is immediately connected into your vehicle to see if you're okay. Even if you're unable to respond, the Advisor knows your location through GPS technology and requests emergency help be sent right away. | In addition to driver and right-front passenger dual-stage frontal air bags,<sup>4</sup> Silverado 1500 models also feature a standard **PASSENGER SENSING SYSTEM**, which automatically switches the right-front passenger frontal air bag on or off based on the passenger's weight and the type of pressure on the seat. | **HEAD-CURTAIN SIDE-IMPACT AIR BAGS<sup>4</sup>** – available in LT and LTZ 1500 models – help reduce the risk of injuries to all outboard occupants in certain side impacts. | The **TIRE PRESSURE MONITOR** is standard on all Silverado 1500 and Silverado HD SRW models and monitors the tire inflation level in each of the four road tires. | The Driver Information Center (DIC) can display the readout of each individual tire's pressure (excludes spare tire) and immediately warn the driver if any tire falls below a specified pressure.



THE MOST CHERISHED CARGO ISN'T ALWAYS IN THE BED OF THE TRUCK. THAT'S WHY SILVERADO'S STANDARD SAFETY CAGE AND CRUSH ZONES ARE AS IMPORTANT TO US AS THE ENGINE. THEY HELP PROTECT YOUR MOST TREASURED PAYLOAD – YOU AND YOUR PASSENGERS.

1 Side-impact crash test is for a model tested with and without optional head-curtain side air bags (SABs). Government star ratings are part of the National Highway Traffic Safety Administration's (NHTSA's) New Car Assessment Program (www.safercar.gov). 2 OnStar services require vehicle electrical system (including battery), wireless service and GPS satellite signals to be available and operating for features to function properly. OnStar acts as a link to existing emergency service providers. Subscription Service Agreement required. Call 1-888-4ONSTAR (1-888-466-7827) or visit onstar.com for OnStar's Terms and Conditions, Privacy Policy and details and system limitations. 3 Remote Door Unlock success varies with conditions. 4 Air bag inflation can cause severe injury or death to anyone too close to the bag when it deploys. Be sure every occupant is properly restrained.

XM Radio<sup>2</sup> is standard, with three trial months of service. XM turns your world on with commercial-free music channels for virtually every music genre, all in amazing digital sound. Turn on your favorite sports including every Major League Baseball<sup>®</sup> game, plus the biggest names in news, talk, comedy and family programming, wherever you go, from coast to coast. Find what turns you on.



## OFF THE BEATEN PATH COMES STANDARD.

Paved roads are only a suggestion with the rugged **Z71 OFF-ROAD PACKAGE**. | Available on all Silverado 1500 models – including 2WD – and on Silverado HD single-rear wheel models. | This legendary package includes the **GM SEGMENT-EXCLUSIVE AUTOMATIC LOCKING REAR DIFFERENTIAL<sup>1</sup>** that sends power to the rear wheel with the grip when loss of traction is detected. | **Z71-SPECIFIC SUSPENSION** including 46mm (1500 models) or 36mm twin-tube (2500HD and 3500HD SRW models) high-pressure gas-charged shocks. | 36mm front stabilizer bar. | Off-road jounce bumpers to absorb large suspension inputs. | **SKID PLATE PACKAGE** to protect the undercarriage from debris kicked up while driving. | Silverado 1500 models with the Z71 Off-Road Package can be equipped with **18-INCH ALUMINUM WHEELS AND ON/OFF-ROAD TIRES**. | Z71 cargo box badging. | Available Autotrac 4x4 system (1500 4x4 models only).

<sup>1</sup> Based on 2008 GM Large Pickup segment. <sup>2</sup> XM is available only in the 48 contiguous United States. Required \$12.95 monthly subscription sold separately after three trial months. All fees and programming subject to change. For more information, visit [gm.xmradio.com](http://gm.xmradio.com).



Silverado 1500 Crew Cab Short Box LT 4x4 in Victory Red. Shown with the available Z71 Off-Road Package and other available features.



## EVERYTHING YOU NEED. EVERYTHING YOU WANT.

Refinement, technology and comfort. In Crew Cab LTZ models, it starts at the front and moves to the back – the way back. | The standard **REMOTE VEHICLE STARTER SYSTEM** operates from up to 195 feet away and unlocks the door to an impressively quiet interior. | Inside, features include an LTZ-exclusive **WOODGRAIN-APPEARANCE INSTRUMENT PANEL** that is located down and forward for added spaciousness, a commanding view of the road and excellent ergonomics. | 10-way power, heated Custom Leather-appointed front bucket seats. | Standard dual-zone automatic temperature controls. | **POWER-ADJUSTABLE PEDALS** add to the feeling of personal customization. | **20 LITERS OF FRONT CONSOLE STORAGE.** | Available **XM NAVTRAFFIC<sup>1,2</sup>** enhances the vehicle's GPS navigation system by showing real time traffic data. | From the outside, LTZ's jewel-like, vertically stacked headlamps reinforce Silverado's strong stance, and a door-over-rocker design completes a clean, finished look. | **HEATED WASHER FLUID SYSTEM** makes sure even the most stubborn ice and

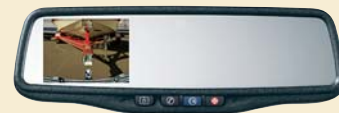
bugs are removed. | The 57-degree, raked windshield, offering a commanding view of the road. | A 5' 8" cargo box (Half-Ton Extended and Crew Cab models only) with an available, track-based **CARGO MANAGEMENT SYSTEM** and two-tier loading<sup>3</sup> finish out one well-rounded truck.



**THE AVAILABLE TOUCH-SCREEN NAVIGATION RADIO<sup>4</sup>** includes voice recognition, Bose® Sound System and a 6.5-inch-diagonal, full-color touch-screen display with the ability to play a CD (or DVD when the available rear-seat entertainment system is ordered) and use the navigation DVD simultaneously.

**OnSTAR<sup>5</sup> TURN-BY-TURN NAVIGATION<sup>6</sup>** included in the available Directions & Connections Plan, is the simplest and smartest navigation system. Just press the OnStar button and tell the Advisor where you want to go. She'll download the directions to your vehicle and an automated voice will guide you through every turn until you arrive at your destination. Turn-by-Turn Navigation makes stopping to ask for directions, fumbling with maps and printing out web directions things of the past. And Turn-by-Turn allows you to keep your eyes on the road and your hands on the wheel.

<sup>1</sup> XM is available only in the 48 contiguous United States. Required \$12.95 monthly subscription sold separately after three trial months. All fees and programming subject to change. For more information, visit gm.xmradio.com. <sup>2</sup> Required XM Radio and XM NavTraffic monthly subscriptions sold separately after trial period. XM NavTraffic only available in select markets. All fees and programming subject to change. Subscriptions subject to customer agreement available at gm.xmradio.com. XM service only available in the 48 contiguous United States. <sup>3</sup> Cargo and load capacity limited by weight and distribution. <sup>4</sup> Map coverage not available in Puerto Rico and the Virgin Islands. <sup>5</sup> Call 1-888-4ONSTAR (1-888-466-7827), visit onstar.com and see page 43 for details and system limitations. <sup>6</sup> Not available in certain areas. Visit onstar.com for coverage map.



NEW FOR 2009, THE AVAILABLE REARVIEW CAMERA SYSTEM<sup>4</sup> is designed to allow the driver to use the rearview mirror (or touch-screen navigation radio screen, if equipped), to see certain stationary obstacles located behind the vehicle. It is positioned inconspicuously near the tailgate handle.

## WIDE-OPEN DOORS. WIDE-OPEN POSSIBILITIES.

Utility and capability – extended. This truck's long list of helpful features includes: **REAR DOORS, THAT OPEN – UP TO 170 DEGREES<sup>1</sup> – WIDER THAN THE DOORS ON ANY OTHER FULL-SIZE PICKUP.<sup>2</sup>** | Bolt-on door hinges ensure proper door alignment and require little effort to open and close. | This accommodating attitude carries over to a cargo box that's more than **FOUR FEET WIDE BETWEEN THE WHEELHOUSINGS<sup>3</sup>** and can welcome larger materials such as plywood and drywall. | The **TALL, BOXED REAR FRAME RAILS** taper to the spare, distributing stiffness and dynamic nodes for ride improvement in 1500 models. | This truck looks good at work too. Its streamlined, **HEATED OUTSIDE REARVIEW MIRRORS** reduce wind noise and enhance aerodynamics, while its muscular sheet metal provides clean proportions and **MINISCULE GAPS.** | Vertically stacked, dual-filament taillamps with a large illuminated area prove the truck is built for even the longest days of work – or play.

<sup>1</sup> 164 degrees in 3500HD Big Dooley models. <sup>2</sup> Based on 2008 GM Large Pickup segment. Excludes other GM vehicles. <sup>3</sup> Cargo and load capacity limited by weight and distribution. <sup>4</sup> LT models require either the available Safety Plus Package or the Exterior Plus Package. Not available on Extended Cab Short Box and Regular Cab models or Extended Cab Standard Box models with sunroof. LTZ models require the available LTZ Plus Package.



**FULL-DROP POWER REAR WINDOWS** are standard in Extended Cab LT and LTZ models. These large rear windows power down completely into the rear doors at the touch of a button for added comfort and convenience.



**THE POWER SIDE-SLIDING REAR WINDOW** enhances your driving comfort. Operated with a switch in the upper console, this available window slides sideways from the center position to the passenger side.



Silverado 1500 Extended Cab Standard Box LT in Blue Granite Metallic. Shown with available features.





**CAVERNOUS FRONT-SEAT STORAGE** space is found in every Silverado LT and Silverado LT HD. LT models offer 15.2 liters of combined center armrest and lockable underseat storage space. This underseat compartment also boasts a 12-volt outlet.




**DUAL GLOVE BOXES** are featured in Silverado and Silverado HD Work Truck (WT), LS (1500 models only) and LT models. These two convenient storage spaces provide nearly nine liters of combined cargo space. Add all this room to the center armrest and lockable underseat storage compartments in LT models for a grand total of nearly 24 liters of cargo-swallowing space.

## YOUR COMFORT ZONE JUST WENT HANDS-FREE.

Extended Cab LT is long on interior comfort, room and storage. | Up front, stretch out with plenty of front-seat legroom while enjoying outstanding seat comfort – thanks to **DUAL-FIRMNESS FOAM**. | The interior greets you with an **OPTIMIZED INSTRUMENT PANEL DESIGN** – with a six-gauge cluster – that positions the panel down and forward for interior spaciousness and a clear view of the road. | The AM/FM radio with CD player includes an **AUXILIARY AUDIO INPUT JACK** so you can play your own tunes. | Available **IN-DASH SIX-DISC CD CHANGER WITH MP3 COMPATIBILITY AND BOSE® SOUND SYSTEM**. | In the back, you'll appreciate the unobstructed rear load floor view the **FLIP-UP, 60/40 SPLIT-BENCH REAR STADIUM SEATING** offers. | The interior offers **PREMIUM MATERIALS** with low gloss levels. | Sculpted door designs and molded front seatbacks yield plenty of interior room. | And if you actually want to get out, the low step-in height makes it easy.

1 The Bluetooth word mark is a registered trademark owned by Bluetooth SIG, Inc. and any use of such mark by Chevrolet is under license. Go to [gm.com/bluetooth](http://gm.com/bluetooth) to find out which Bluetooth phones are compatible with the vehicle.

 New for 2009, the integrated Bluetooth® wireless technology is standard on LTZ and available in LT models. You can answer and end calls without touching your mobile phone – because now most Bluetooth-compatible cell phones<sup>1</sup> can be connected to the vehicle audio system. In addition, as an incoming call is answered, the vehicle's audio system is conveniently and automatically muted.

## SILVERADO WORK TRUCK: ON THE CLOCK EVEN WHEN YOU AREN'T.

The Driver Information Center (DIC) always has your back. It constantly keeps the vehicle systems in check and reports on those that get out of line. It's the foreman that punches in when you turn the key.

Work Truck (WT) models take their jobs seriously. On the outside, a strong, deep, stamped box offers plenty of cargo volume. | **A REMOVABLE TAILGATE, STAKE POCKETS, TWO-TIER LOADING CAPABILITY AND FOUR CARGO TIE-DOWNS** provide additional convenience and utility. | The available, integrated and **CONFIGURABLE CARGO MANAGEMENT SYSTEM** can easily take advantage of numerous dealer-installed Chevy Accessories,



**THE AVAILABLE LS PACKAGE** includes chrome styled-steel wheels, a front chrome bumper and chrome grille surround. Silverado WT always works hard – even at looking good.

Above: Silverado 1500 regular cab WT in Summit White. Shown with available features and dealer-installed Chevy Accessories.

such as a sliding toolbox and side storage boxes. See page 24 for more information. | Inside, WT features a true truck interior with **LARGE GRAB HANDLES AND CONTROLS** that can be operated even with gloves on. | There is storage aplenty with big cup holders and molded-door-panel stowage pockets – that **CAN HOLD UP TO FIVE LARGE 20-OUNCE BOTTLES WHEN COMBINED**. | The 40/20/40 split-bench vinyl front seat offers 6.1 liters of fold-down center armrest compartment space, and **DUAL GLOVE BOXES** provide even more easily accessible storage space. | After a long day, the **RUBBERIZED VINYL FLOOR COVERING MAKES FOR EASY CLEANUP**. | And with the one-year OnStar Safe & Sound Plan<sup>1</sup>, you can enroll in **ONSTAR VEHICLE DIAGNOSTICS**<sup>2</sup>, which runs hundreds of diagnostic checks on four of your vehicle's key operating systems – to help keep your truck working efficiently right alongside you.

<sup>1</sup> Call 1-888-4ONSTAR (1-888-466-7827), visit onstar.com and see page 43 for details and system limitations. <sup>2</sup> Diagnostic services vary on Silverado HD models equipped with the Duramax Diesel 6.6L V8.



**THE AVAILABLE TRAILER BRAKE CONTROLLER** comes with instrument panel-mounted controls. It's integrated with the ABS to provide immediate and measured brake force signaling to electrically controlled trailer brake systems.

Silverado 2500HD Regular Cab Work Truck (WT) interior in Dark Titanium. Shown with available features.

[chevy.com/silverado](http://chevy.com/silverado)

TO A CLIMBER, THE RIGHT EQUIPMENT KEEPS YOU SECURELY CONNECTED ON DIFFERENT TYPES OF FOOTINGS. LIKEWISE, THE AVAILABLE GM-EXCLUSIVE<sup>2</sup> AUTOMATIC LOCKING REAR DIFFERENTIAL KEEPS SILVERADO CONNECTED TO THE ROAD. THE AUTOMATIC LOCKING REAR DIFFERENTIAL ALLOWS ADDITIONAL TRACTION ON SLIPPERY SURFACES WHEN REAR-WHEEL SLIPPAGE IS DETECTED AT LOWER SPEEDS. IT'S SIMPLE: SILVERADO GRIPS WHEN YOU NEED IT.



## A GRIP ON TECHNOLOGY.

**01 SMOOTH RIDE AND RESPONSIVE HANDLING.** Silverado 1500 models feature a coil-over-shock front suspension and a wide front track, which provide great on-center feel, smooth out minor road irregularities, and supply excellent handling and stability on nearly all road surfaces. Front and rear durable, fade-resistant shocks provide an unexpectedly smooth and controlled ride.



**02 VORTEC V8 ENGINES.** Vortec engines are designed to be both powerful and efficient. The available 315-hp Vortec 5.3L V8 offers better V8 fuel economy than any competitor.<sup>1</sup> Or, if you crave the 403 horses and 417 lb.-ft. of torque generated by the most powerful half-ton engine on the planet,<sup>2</sup> go for the new Vortec 6.2L V8. This engine employs high-flow cast-aluminum cylinder heads and Variable Valve Timing (VVT) technology, which enhance low-end torque and high-end power.

**03 NEW HYDRA-MATIC SIX-SPEED AUTOMATIC TRANSMISSION.** New for 2009, the six-speed automatic transmission – available on select models – features a sophisticated 32-bit control module that optimizes shift quality; a “steep” first gear and “tall” overdrive gears for lively acceleration and quiet, low-rpm highway cruising; and a Tap-Up/Tap-Down driver shift control feature. Plus, it’s lubricated by durable and stable Dexron VI transmission fluid, which is validated up to 100,000 miles.<sup>3</sup>

**04 ACTIVE FUEL MANAGEMENT.** With this technology, the Vortec 5.3L and Vortec 6.0L V8 engines deliver power when you need it. In situations where extra power is not needed, such as cruising down the highway on level roads, Active Fuel Management deactivates four of the eight cylinders with seamless precision.

1 Based on 2008 GM Large Pickup segment and available Vortec 5.3L V8-equipped Silverado with an EPA estimated MPG 14 city/20 hwy. Excludes other GM vehicles. 2 Based on 2008 GM Large Pickup segment. Excludes other GM vehicles. 3 Maintenance needs vary with different uses and driving conditions. See the Owner's Manual for more information. 4 Requires available Safety Package and Exterior Plus Package. Not available with power sunroof. 5 Requires available LTZ Plus Package. Not available with power sunroof. 6 Required XM Radio and XM NavTraffic monthly subscriptions sold separately after trial period. XM NavTraffic only available in select markets. All fees and programming subject to change. Subscriptions subject to customer agreement available at gm.xmradio.com. XM service only available in the 48 contiguous United States.

**REARVIEW CAMERA SYSTEM.** The available rearview camera system on LT<sup>4</sup> and LTZ<sup>5</sup> models is designed to allow the driver to use the rearview mirror to see certain stationary obstacles located behind the vehicle. Positioned inconspicuously near the tailgate handle, the camera is offered with the available Ultrasonic Rear Parking Assist, which notifies the driver of obstacles up to 2.5 meters behind the vehicle while traveling in reverse at low speeds.

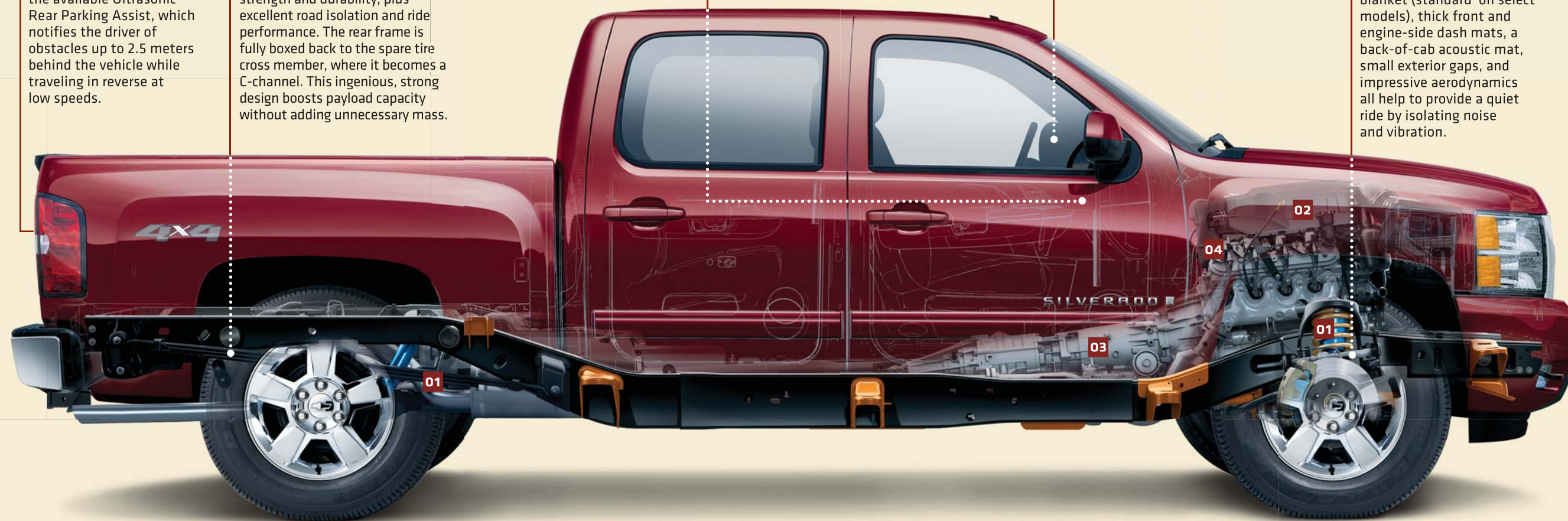
**FRAME TECHNOLOGY.** The cornerstone of Silverado 1500 is its strong, stiff frame. The front portion of this advanced design is fully-boxed and utilizes hydroforming technology. Hydroforming allows for fewer welds, which provides clean attachment points with better fit to frame. This smart combination provides immense overall frame strength and durability, plus excellent road isolation and ride performance. The rear frame is fully boxed back to the spare tire cross member, where it becomes a C-channel. This ingenious, strong design boosts payload capacity without adding unnecessary mass.



**NEW XM NAVTRAFFIC<sup>®6</sup>** enhances your vehicle's GPS navigation system by showing real-time traffic data when it's needed most – while you're driving. Available in over 80 markets, XM NavTraffic displays construction, road closures and accidents so that you can get to your destination faster. Average traffic speed and estimated drive time are also available in select markets. For more information, visit [gm.xmradio.com/navtraffic](http://gm.xmradio.com/navtraffic).

**DRIVER INFORMATION CENTER (DIC).** The DIC continuously monitors and reports on numerous vehicle functions through a large display window. Push-button controls located next to the gauge cluster allow you to personalize your door locking/unlocking preferences, headlamp delay upon exit and more.

**QUIET RIDE.** Hydraulic engine mounts (standard on select 1500 models), exhaust and induction tuning optimization, an underhood blanket (standard on select models), thick front and engine-side dash mats, a back-of-cab acoustic mat, small exterior gaps, and impressive aerodynamics all help to provide a quiet ride by isolating noise and vibration.



Silverado 1500 Crew Cab Short Box LTZ 4x4 in Deep Ruby Metallic. Shown with available features.

## SIX-WHEELED TOOLBOX.

Combine the Silverado HD with the available 365 horsepower and 660 lb.-ft. of torque Duramax Diesel V8 and the Allison 1000 Series six-speed automatic transmission, and you have the most powerful heavy-duty pickup on the planet.<sup>1</sup> Here is a look at the Silverado HD:

**01 IMPRESSIVE CONFIGURABILITY** Between Silverado and Silverado HD, there are six engine choices, four transmission choices, a selection of three cab sizes and three box length options. This means there's a Silverado or Silverado HD perfectly configured to tackle the rigors of your everyday life.

**02 SUSPENSION PACKAGES** Whatever the task, there's an available Silverado HD suspension option ready to take it on:

- Z85 Handling/Trailering suspension with rear monotube shocks and a 34mm front stabilizer bar (1500 and HD models).
- Z71 Off-Road suspension with rear 36mm twin-tube shocks and a 36mm front stabilizer bar (HD SRW models).

**03 ADVANCED COMMON RAIL FUEL DIRECT-INJECTION SYSTEM** Silverado HD models equipped with the available Duramax Diesel 6.6L V8 Turbo engine feature a common rail fuel direct-injection system that delivers fuel via a high-pressure pump and reinforced fuel rails and distribution lines, allowing a maximum injection pressure of 26,000 psi. Combined with six-hole fuel injectors that provide optimal fuel vaporization, this overall system allows superior fuel delivery and complete combustion.

**04 ENHANCED BRAKING SYSTEM** All 2500HD and 3500HD models are equipped with four-wheel antilock disc brakes with Dynamic Rear Proportioning – a feature that optimizes braking performance under varying cargo load conditions. As part of the system, more corrosion-resistant brake linings help Silverado HD models score better on the Brake Feel Index (BFI). GM created the BFI, which provides a composite score using weighted variables such as pedal feel and brake pedal effort to ensure that Silverado HD brakes are held to a stringent design and performance standard.

### ALLISON SIX-SPEED AUTOMATIC TRANSMISSION.

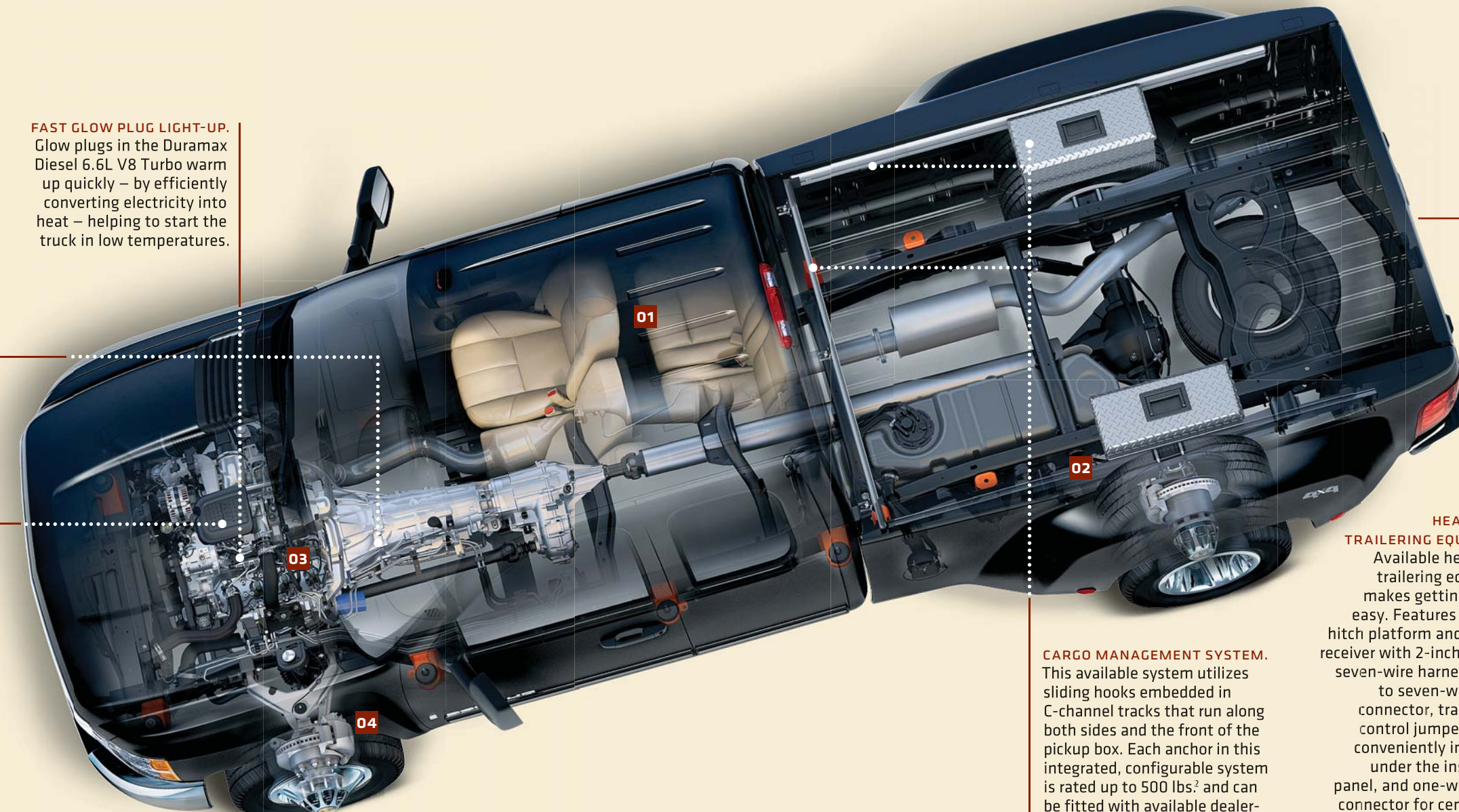
This available transmission uses many of the same load-carrying components found in Chevy medium-duty commercial truck transmissions. It also employs advanced technology such as a GM heavy-duty truck-exclusive Tap-Up/Tap-Down driver shift control feature; shift stabilization that helps reduce shift busyness when driving on mountainous terrain; and auto grade-braking, which automatically downshifts when the driver applies the brakes while descending long, steep grades.

### DURAMAX DIESEL 6.6L V8 ENGINE.

The available Duramax Diesel 6.6L V8 pumps out best-in-class<sup>1</sup> heavy-duty horsepower and torque – 365 hp and 660 lb.-ft. of torque. All this strength comes from features such as a “smart,” variable-geometry turbocharger, which optimizes boost performance. Combine this with quiet operation and B5 biodiesel compatibility, and it's no wonder the Duramax is known as the maximum-strength diesel.

### FAST GLOW PLUG LIGHT-UP.

Glow plugs in the Duramax Diesel 6.6L V8 Turbo warm up quickly – by efficiently converting electricity into heat – helping to start the truck in low temperatures.



### HEAVY-DUTY TRAILERING EQUIPMENT.

Available heavy-duty trailering equipment makes getting hitched easy. Features include a hitch platform and 2.5-inch receiver with 2-inch adapter, seven-wire harness mated to seven-way sealed connector, trailer brake control jumper harness conveniently integrated under the instrument panel, and one-way sealed connector for center high-mounted brake lamp.

### CARGO MANAGEMENT SYSTEM.

This available system utilizes sliding hooks embedded in C-channel tracks that run along both sides and the front of the pickup box. Each anchor in this integrated, configurable system is rated up to 500 lbs.<sup>2</sup> and can be fitted with available dealer-installed Chevy Accessories such as side storage boxes.

THE VORTEC 6.0L IN HD MODELS generates 380 lb.-ft.<sup>3</sup> of torque and more standard horsepower than any heavy-duty truck: 360 horses.<sup>1,3</sup> This engine employs Variable Valve Timing (VVT) technology that optimizes combustion and enhances low-end torque and high-end power. Plus, it incorporates durable features such as extended-life spark plugs and engine coolant<sup>4</sup> along with smart components such as Electronic Throttle Control, which provides outstanding throttle response and excellent efficiency.

<sup>1</sup> Based on 3/4- and 1-ton vehicles in the 2008 GM Large Pickup segment. Excludes other GM vehicles. <sup>2</sup> Cargo and load capacity limited by weight and distribution. <sup>3</sup> Trucks less than 10,000 lbs. GVWR. <sup>4</sup> Maintenance needs vary with different uses and driving conditions. See the Owner's Manual for more information.

Silverado 3500HD Big Dooley Extended Cab Long Box LT 4x4 in Black. Shown with available features and dealer-installed Chevy Accessories.



01

02

Silverado 1500 Extended Cab LT 4x4 in Victory Red. Shown with available features and dealer-installed Chevy Accessories!



## DEALER-INSTALLED CHEVY ACCESSORIES.

All dealer-installed Chevy Accessories have been engineered specifically for Silverado. | So we have the confidence to back them all with the GM 3-year/36,000-mile (whichever comes first) New Vehicle Limited Warranty when they are ordered with your truck. | Accessories installed after delivery include a 12-month/12,000-mile (whichever comes first) limited warranty. | Plus, all accessories can be included in your monthly payment. | See your dealer for warranty details, and head to [chevy.com](http://chevy.com) to find even more ways to personalize your vehicle.

**01 THE OVERHEAD BED DIVIDER** slides along the Cargo Management System rails. It comes with front and rear racks (sold separately) that can be used as overhead racks in the up position and bed dividers in the down position. Offered with and without crossbars.



**THE SLIDING TOOLBOX** is lockable and constructed of diamond-patterned aluminum. Using the Cargo Management System rails, it slides forward and backward for easy access.



**THE CARGO BOX DIVIDER** is made of sturdy metal mesh. It slides on the Cargo Management System<sup>1</sup> rails so that you can organize cargo within the truck bed.



**THE CARGO MANAGEMENT SYSTEM** can support up to a 500-lb<sup>1</sup> load. The rear rack slides along the rails and includes four load stops.

<sup>1</sup> Cargo and load capacity limited by weight and distribution.



**SILVERADO 1500 CREW CAB** Short Box LTZ 4x4 in Black. Shown with available dealer-installed chrome grille, recovery hooks, mirror caps, door handles, fuel door, six-inch oval chrome assist step and bed rails and 20-inch<sup>1</sup> 12-spoke, cast-chrome wheels from Chevy Accessories.



**SILVERADO 1500 CREW CAB** Short Box LT 4x4 in Black. Shown with available dealer-installed mirror caps, fuel door, door handles ground effects package, custom billet grille and 20-inch<sup>1</sup> chrome wheels from Chevy Accessories.

<sup>1</sup> Use only GM-approved tire and wheel combinations. Unapproved combinations may change the vehicle's performance characteristics. For approved tire and wheel combinations and other important information, go to [gmaccessorieszone.com](http://gmaccessorieszone.com) or see your dealer for details.

These are just a few of the Chevy Accessories offered for Silverado. For a full list of ways to make our truck, your truck, visit [chevy.com/silverado](http://chevy.com/silverado).

## DEALER-INSTALLED CHEVY ACCESSORIES.



**THE UNDERSEAT STORAGE BOX** allows you to organize and conceal items under the rear seat of your Silverado.



**STAINLESS STEEL EXHAUST TIP** adds a sporty appearance to the exterior of your Silverado.



**THE PORTABLE DVD PLAYER** – with two wireless headphones and a remote control – integrates perfectly into the headliner.



**TWO-WAY ADVANCED REMOTE** Convenient display shows the vehicle's current status (remote-start engaged, for instance) and vehicle data. Visit [chevy.com](http://chevy.com) to learn more.



**OVAL ASSIST STEPS** make it easier to get into and out of your Silverado. These stylish six-inch-diameter, high-strength, corrosion-resistant, stainless steel oval assist steps are available in Black or chrome.



**THIS SOFT ROLL-UP TONNEAU COVER** features integrated cross bows that easily roll up out of the way to allow full access to the bed.



**A HARD COMPOSITE TONNEAU COVER** features struts for easy opening and closing, a lock and a quick-release mechanism for easy removal.



**THE BEDLINER AND TAILGATE LINER** are made of black, high-density, skid-resistant polyethylene.<sup>1</sup>

<sup>1</sup> Cargo and load capacity limited by weight and distribution.



**THIS BRUSH GRILLE GUARD** is designed to look good, uniquely fit the contour of the front end of your truck and also provide protection.

**THE HEAD RESTRAINT DVD SYSTEM** features two seven-inch-diagonal flat-screen monitors and two top-loading DVD/CD/MP3 players.



**20-INCH SEVEN-SPOKE CAST-CHROME WHEEL<sup>1</sup>**



**22-INCH 12-SPOKE CAST-CHROME WHEEL<sup>1</sup>**



**22-INCH EIGHT-SPOKE CAST-CHROME WHEEL<sup>1</sup>**



**22-INCH EIGHT-SPOKE CAST-CHROME WHEEL<sup>1</sup>**



**20-INCH SIX-SPOKE CAST-CHROME WHEEL<sup>1</sup>**



**20-INCH FIVE-SPOKE CAST-CHROME WHEEL<sup>1</sup>**



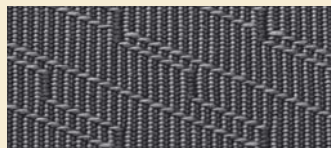
**20-INCH FIVE-SPOKE, REVERSE-RIM CAST-CHROME WHEEL<sup>1</sup>**

<sup>1</sup> Use only GM-approved tire and wheel combinations. Unapproved combinations may change the vehicle's performance characteristics. For approved tire and wheel combinations and other important information, go to [gmaccessorieszone.com](http://gmaccessorieszone.com) or see your dealer for details.

## FABRICS.



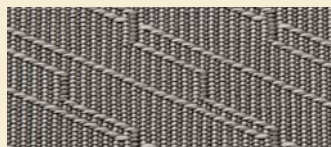
DARK TITANIUM VINYL



DARK TITANIUM CLOTH



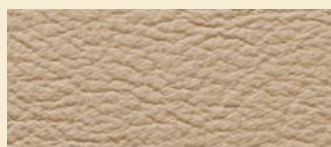
LIGHT CASHMERE PREMIUM CLOTH



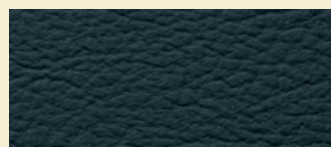
LIGHT TITANIUM PREMIUM CLOTH



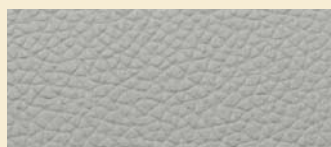
EBONY PREMIUM CLOTH



LIGHT CASHMERE CUSTOM LEATHER-APPOINTED TRIM



EBONY CUSTOM LEATHER-APPOINTED TRIM



LIGHT TITANIUM CUSTOM LEATHER-APPOINTED TRIM

## SEATS.

**01 CUSTOM LEATHER-APPOINTED BUCKET SEAT** Reclining, heated, 10-way power-adjustable front bucket seat. Standard in LTZ models. Shown in Light Cashmere.

**02 PREMIUM CLOTH BUCKET SEAT** Reclining six-way power-adjustable front bucket seat. Available in LT models. Also available with Custom Leather-appointed trim. Shown in Light Titanium.

**03 VINYL 40/20/40 SPLIT-BENCH SEATS** with recliners. Standard in WT models. Also available in Cloth. Shown in Dark Titanium. LT models feature standard Premium Cloth 40/20/40 split-bench seats with recliners, fold-down armrest storage and lockable underseat storage. Also available with Custom Leather-appointed trim.



01



02



03

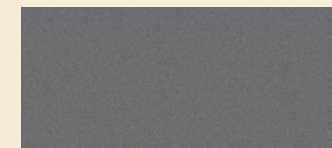
### AVAILABILITY

INTERIOR COLORS	WT	LS	LT	LTZ
Dark Titanium	■	■		
Ebony			■	■
Light Cashmere/Ebony			■	
Light Titanium/Dark Titanium				■
Light Titanium/Ebony			■	
Dark Cashmere/Light Cashmere				■

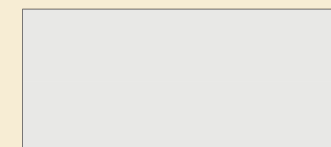
## EXTERIOR COLORS.



IMPERIAL BLUE METALLIC



GRAYSTONE METALLIC



SUMMIT WHITE



DEEP RUBY METALLIC



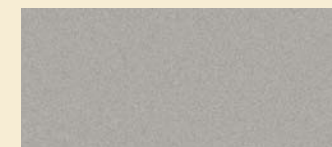
BLUE GRANITE METALLIC



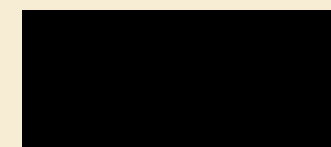
VICTORY RED



DARK CHERRY METALLIC



SILVER BIRCH METALLIC



BLACK



BLACK GRANITE METALLIC  
(Extra-cost color.)

## HD WHEELS.

For the full lineup of standard and available Silverado and Silverado HD wheels, visit [chevy.com/silverado/features](http://chevy.com/silverado/features).



16-INCH CHROME-CLAD STEEL (3500HD SRW)



16-INCH CHROME STYLED-STEEL (2500HD)



16-INCH POLISHED FORGED-ALUMINUM (2500HD)



17-INCH MACHINED-ALUMINUM (2500HD AND 3500HD SRW)



17-INCH STEEL WITH CHROME OVERLAY AND CENTER CAP (3500HD BIG DOOLEY)



## 1500 WHEELS.



17-INCH CHROME STYLED-STEEL WHEEL



17-INCH PAINTED STEEL



20-INCH CHROME-CLAD ALUMINUM<sup>1</sup>



18-INCH CHROME-CLAD ALUMINUM



18-INCH ALUMINUM (1500 Z71)



17-INCH CUSTOM ALUMINUM

<sup>1</sup> Use only GM-approved tire and wheel combinations. For important tire and wheel information, go to [gmaccessorieszone.com](http://gmaccessorieszone.com) or see your dealer for details.



## HD WHEELS.

For the full lineup of standard and available Silverado and Silverado HD wheels, visit [chevy.com/silverado/features](http://chevy.com/silverado/features).



16-INCH CHROME-CLAD STEEL (3500HD SRW)



16-INCH CHROME STYLED-STEEL (2500HD)



16-INCH POLISHED FORGED-ALUMINUM (2500HD)



17-INCH MACHINED-ALUMINUM (2500HD AND 3500HD SRW)



17-INCH STEEL WITH CHROME OVERLAY AND CENTER CAP (3500HD BIG DOOLEY)



## 1500 WHEELS.



17-INCH CHROME STYLED-STEEL WHEEL



17-INCH PAINTED STEEL



20-INCH CHROME-CLAD ALUMINUM<sup>1</sup>



18-INCH CHROME-CLAD ALUMINUM



18-INCH ALUMINUM (1500 Z71)



17-INCH CUSTOM ALUMINUM

<sup>1</sup> Use only GM-approved tire and wheel combinations. For important tire and wheel information, go to [gmaccessorieszone.com](http://gmaccessorieszone.com) or see your dealer for details.

# SILVERADO & SILVERADO HD REGULAR CAB BUYER'S GUIDE

S = Standard O = Optional - = Not Available

## EXTERIOR

	WT	LT
Cargo Management System: configurable, sliding hook system in pickup bed	0	0
Exterior Plus Package: includes remote vehicle starter system; Universal Home Remote; EZ Lift locking tailgate; and foglamps	-	0
LS Package: includes 17-inch chrome styled-steel wheels, chrome-surround grille and front bumper, body-color front bumper end caps and LS badging (1500 models)	0	-
Mirrors: - Black, foldaway outside	S	-
- Black, foldaway, power, heated outside	-	S
- trailering, high-visibility vertical, manual foldaway and extendable, Black with lower convex spotter glass	0	-
- trailering, vertical, power, heated, manual foldaway and extendable, Black with turn-signal indicators and lower convex spotter glass	-	0
Recovery hooks: two front	0 <sup>1</sup>	S

## ENGINE/CHASSIS

Differential: automatic locking rear	0	0
Engine block heater	0	0
Fuel capacities (approximate): - Standard Box models (26-gallon)	S	S
- Long Box models (34-gallon)	S	S
Oil coolers: - engine, heavy-duty, external (HD models)	S	S
- transmission, auxiliary, heavy-duty, external (HD models)	S	S
Skid Plate Package: <sup>2</sup> includes frame-mounted shield protecting front underbody, oil pan, differential case and transfer case (on 4x4 models)	0	0
Suspensions: - Z83 Solid Smooth Ride (1500 models)	S	-
- Z85 Handling/Trailering (1500 models; standard on HD models)	0	S
- Z71 Off-Road (1500 and HD SRW models)	-	0
Trailering Package: includes trailer hitch platform, seven-wire harness mated to seven-way sealed connector, trailer brake control jumper harness under dash, sealed connector for center high-mounted brake lamp and external transmission oil cooler	0 <sup>3</sup>	0 <sup>3</sup>
Transfer cases (4x4 models only): - floor-mounted, manual shift-on-the-fly	S	-
- Autotrac, active (1500 models)	-	S
- electronic with rotary dial (HD models)	-	S

Z71 Off-Road Package: includes Skid Plate Package; off-road jounce bumpers, shock absorbers and stabilizer bars; high-capacity air cleaner in 1500 models; Z71 decals; and automatic locking rear differential (1500 and HD SRW models)	-	0
---	---	---

## SEATING

Vinyl 40/20/40 split-bench front seats with recliners (also available in cloth)	S	-
Premium Cloth 40/20/40 split-bench front seats with recliners, fold-down center armrest with storage, and lockable underseat storage	-	S

## INTERIOR

	WT	LT
Bluetooth® wireless technology for select compatible phones <sup>4</sup>	-	0
Climate (temperature) control: single-zone, manual	0	S
Cruise control	0	S
Defogger: rear-window	0	0
Door locks: power, programmable	0	S
Driver Information Center (DIC) Display	S	S
DIC controls (requires Interior Plus Package)	0	0
Glove boxes: dual	S	S
Interior Plus Package: includes six-way power-adjustable driver seat, steering wheel-mounted audio controls and Bluetooth® technology for select compatible phones <sup>4</sup>	-	0
Mirror, inside rearview: auto-dimming	-	0 <sup>5</sup>
Remote vehicle starter system	-	0 <sup>6</sup>
Steering column: Tilt-Wheel, adjustable	S	S
Steering wheel-mounted controls: audio system	-	0 <sup>7</sup>
Windows: power with driver's Express-Down feature	-	S

## SAFETY AND SECURITY

Air bags: <sup>8</sup> - driver and right-front passenger (HD models)	S	S
- driver and right-front passenger with Passenger Sensing System (1500 models)	S	S
- front head-curtain side-impact (1500 models)	-	0
Brake controller: trailer, ABS-integrated <sup>9</sup>	0	0
Brakes: four-wheel antilock brake system (ABS) with Dynamic Rear Proportioning	S	S
OnStar: <sup>10</sup> with one-year Safe & Sound Plan	S	S
Remote Keyless Entry: includes content-theft alarm and two transmitters	0	S
StabiliTrak Electronic Stability Control System <sup>11</sup>	0	S

## AUDIO SYSTEMS

AM/FM stereo with MP3-compatible CD player	S	S
AM/FM stereo with MP3-compatible in-dash six-disc CD changer	-	0
XM Radio: <sup>12</sup> includes three trial months of service	S	S

PICKUP MODEL	SERIES	DRIVE	TRIM LEVELS	STANDARD ENGINE	HP @ RPM	TORQUE @ RPM	STANDARD TRANSMISSIONS	OPTIONAL ENGINES	GVWR <sup>13</sup> (LBS.)	MAX. PAYLOAD <sup>14</sup> (LBS.)
REGULAR CAB STANDARD BOX	1500 (1/2-ton)	2WD/4x4	Work Truck	Vortec 4.3L V6	195 @ 4600	260 @ 2800	Hydra-Matic 4-speed automatic overdrive	Vortec 4.8L V8, Vortec 5.3L V8	6400	1842 (2WD) 1602 (4x4)
			LT	Vortec 4.8L V8	295 @ 5600	305 @ 4600	Hydra-Matic 4-speed automatic overdrive	Vortec 5.3L V8	6400	1851 (2WD) 1609 (4x4)
REGULAR CAB LONG BOX	1500 (1/2-ton)	2WD/4x4	Work Truck	Vortec 4.3L V6	195 @ 4600	260 @ 2800	Hydra-Matic 4-speed automatic overdrive	Vortec 4.8L V8, Vortec 5.3L V8	6400	1649 (2WD) 1393 (4x4)
			LT	Vortec 4.8L V8	295 @ 5600	305 @ 4600	Hydra-Matic 4-speed automatic overdrive	Vortec 5.3L V8	6400 (2WD) 6800 (4x4)	1710 (2WD) 1846 (4x4)
	2500HD (3/4-ton)	2WD/4x4	Work Truck, LT	Vortec 6.0L V8	360 @ 5400 312 @ 4400 <sup>15</sup>	380 @ 4200 373 @ 4400 <sup>15</sup>	Hydra-Matic 6-speed automatic overdrive	Duramax Diesel 6.6L V8 Turbo	9200	3924 (2WD) 3644 (4x4)
	3500HD (1-ton)	2WD/4x4	Work Truck, LT	Vortec 6.0L V8	360 @ 5400 <sup>16</sup> 322 @ 4400 <sup>17</sup> 312 @ 4400 <sup>15</sup>	380 @ 4200 380 @ 4200 373 @ 4400 <sup>15</sup>	Hydra-Matic 6-speed automatic overdrive	Duramax Diesel 6.6L V8 Turbo <sup>18</sup>	9700 <sup>16</sup> (2WD) 9900 <sup>16</sup> (4x4) 11,400 <sup>17</sup> (4x4)	4812 <sup>16</sup> (2WD) 4161 <sup>16</sup> (4x4) 5309 <sup>17</sup> (4x4)

<sup>1</sup> Standard on all 1500 4x4 and HD models. <sup>2</sup> Included with Z71 Off-Road Package and Snow Plow Prep Package. 2WD models require available Z71 Off-Road Package. <sup>3</sup> Not available with Vortec 4.3L V6 engine or Z83 Solid Smooth Ride suspension. <sup>4</sup> The Bluetooth word mark is a registered trademark owned by Bluetooth SIG, Inc. and any use of such mark by Chevrolet is under license. Go to gm.com/bluetooth to find out which Bluetooth phones are compatible with the vehicle. <sup>5</sup> Requires available Exterior Plus Package or trailering mirrors. <sup>6</sup> Requires available Exterior Plus Package. <sup>7</sup> Requires available Interior Plus Package. <sup>8</sup> Always use safety belts and the correct child restraint for your child's age and size. Even in vehicles equipped with the Passenger Sensing System, children are safer when properly secured in a rear seat in the appropriate infant, child or booster seat. Never place a rear-facing infant restraint in the front seat of any vehicle equipped with an active air bag. See the Owner's Manual and child safety seat instructions for more information. <sup>9</sup> Requires available Trailering Package. <sup>10</sup> Call 1-888-4ONSTAR (1-888-466-7827), visit onstar.com and see page 43 for details and system limitations. <sup>11</sup> 1500 Regular Cab models only. Requires V8 engine. <sup>12</sup> XM is available only in the 48 contiguous United States. Required \$12.95 monthly subscription sold separately after three trial months. All fees and programming subject to change. For more information, visit gm.xmradio.com. <sup>13</sup> Gross Vehicle Weight Rating (GVWR). When properly equipped; includes vehicle, passengers, cargo and equipment. <sup>14</sup> Maximum payload capacity includes weight of driver, passengers, optional equipment and cargo. Cargo and load capacity limited by weight and distribution. <sup>15</sup> HD models with box delete and incomplete chassis cab vehicles. <sup>16</sup> Single-Rear Wheel. <sup>17</sup> Dual-Rear Wheel. <sup>18</sup> Not available on 2WD models.

# SILVERADO & SILVERADO HD EXTENDED CAB BUYER'S GUIDE

S = Standard 0 = Optional - = Not Available

EXTERIOR	WT	LT	LTZ	ENGINE/CHASSIS (CONTINUED)	WT	LT	LTZ
Cargo Management System: configurable, sliding hook system in pickup bed	0	0	0	Trailer Package: includes trailer hitch platform, seven-wire harness mated to seven-way sealed connector, trailer brake control jumper under-dash harness, sealed connector for center high-mounted brake lamp and external transmission oil cooler	0 <sup>11</sup>	0	S
Exterior Plus Package: includes remote vehicle starter system; Universal Home Remote; EZ Lift locking tailgate; power, heated outside mirrors with turn-signal indicators in glass, driver-side auto-dimming feature, power-foldaway feature and curb-tilt; and foglamps	-	0	-	Transfer cases (4x4 models only): — floor-mounted, manual shift-on-the-fly — Autotrac, active (1500 models) — electronic with rotary dial (HD models)	S	-	-
EZ Lift Tailgate Package: includes lockable EZ Lift tailgate	-	0 <sup>1</sup>	0 <sup>2</sup>	Z71 Off-Road Package: includes Skid Plate Package; off-road jounce bumpers, shock absorbers and stabilizer bars; high-capacity air cleaner in 1500 models; Z71 decals; and automatic locking rear differential (1500 and HD SRW models)	-	0	0
Fog lamps: halogen	-	0 <sup>3</sup>	S				
LS Package: includes 17-inch chrome styled-steel wheels, chrome-surround grille and front bumper, and body-color front bumper end caps (1500 models)	0	-	-				
LTZ Plus Package: includes EZ Lift locking tailgate and Universal Home Remote	-	-	0				
Mirrors: — Black, foldaway outside — Black, foldaway, power, heated outside — power, heated outside with turn-signal indicators in glass, driver-side auto-dimming feature, power-foldaway feature and curb-tilt — trailering, high-visibility vertical, manual foldaway and extendable, Black with lower convex spotter glass — trailering, vertical, power, heated, manual foldaway and extendable, Black with turn-signal indicators and lower convex spotter glass	S - - 0	- S 0 <sup>4</sup>	- - S <sup>5</sup>	SEATING Vinyl 40/20/40 split-bench seats with recliners (also available in cloth) Premium Cloth 40/20/40 split-bench front seats with recliners, fold-down center armrest with storage, and lockable underseat storage Premium Cloth reclining, six-way power-adjustable front bucket seats (also available with Custom Leather-appointed trim) Custom Leather-appointed, reclining, heated, 10-way power-adjustable front bucket seats	S - - -	- S 0	- - -
Recovery hooks: two front	0 <sup>6</sup>	S	S	Rear seats: — flip-up, full-width bench — flip-up, 60/40 split-bench	S -	- S	- S
Ultrasonic Rear Parking Assist <sup>7</sup>	-	0	0	INTERIOR Bluetooth <sup>®</sup> wireless technology for compatible phones <sup>12</sup> Climate (temperature) control: single-zone, manual Climate (temperature) controls: dual-zone, automatic Cruise control Defogger: rear-window (not available with power-sliding rear window) Door locks: power, programmable Driver Information Center (DIC) Display DIC controls (LT requires Interior Plus Package) Glove boxes: dual	- S - 0 0 S S -	0 S 0 <sup>13</sup>	S - S S S S -
Windshield washer fluid system: heated	-	-	S	Interior Plus Package: includes six-way power-adjustable driver seat, steering wheel-mounted audio controls, Bluetooth <sup>®</sup> wireless technology for compatible phones <sup>12</sup> and dual-zone automatic temperature controls Mirror, inside rearview: auto-dimming Rearview camera system Remote vehicle starter system Steering column: Tilt-Wheel, adjustable Steering wheel-mounted controls: audio system Sunroof: power-sliding with Express-Open and wind deflector	- - - S S -	0 S 0 <sup>14</sup>	S - S S S 0 <sup>15</sup>
Differential: automatic locking rear	0	0	S				
Engine block heater	0	0	0				
Fuel capacities (approximate): — Short and Standard Box models (26-gallon) — Long Box models (34-gallon)	S S	S S	S S				
MAX Trailering Pack: <sup>8</sup> includes automatic locking rear differential, 9.5-inch rear axle, front and rear disc brakes, Z85 Handling/Trailering suspension, and heavy-duty trailering equipment (1500 Standard Box models only)	-	0	0				
Power Pack Plus: includes Vortec 5.3L V8 engine, automatic locking rear differential, heavy-duty trailering equipment and 17-in. custom aluminum wheels (1500)	-	0	-				
Oil coolers: — transmission, auxiliary, heavy-duty, external (requires Trailering Package or six-speed auto. transmission in 1500 models; standard in HD models) — engine, heavy-duty, external (requires six-speed automatic transmission in 1500 models; standard in HD models)	0 0	0 0	S 0				
Skid Plate Package: <sup>9</sup> includes frame-mounted shield protecting front underbody, oil pan, differential case and transfer case (4x4 models)	0	0	0				
Suspensions: — Z83 Solid Smooth Ride (1500 models) — Z85 Handling/Trailering (1500 models; standard on HD models) — Z60 High-Performance <sup>10</sup> (1500 models) — Z71 Off-Road (1500 and HD SRW models)	S 0 - -	- S 0 0	- S S 0				

INTERIOR (CONTINUED)	WT	LT	LTZ	SAFETY AND SECURITY (CONTINUED)	WT	LT	LTZ
Window: power-sliding, rear	-	0	0	Safety Package: includes power-adjustable pedals, head-curtain side-impact air bags and Ultrasonic Rear Parking Assist	-	0	0
Windows: power, full-drop with driver's Express-Down feature	-	S	S	StabiliTrak Electronic Stability Control System <sup>19</sup>	S	S	S
SAFETY AND SECURITY				AUDIO SYSTEMS			
Air bags: <sup>16</sup> — driver and right-front passenger with Passenger Sensing System — front and rear head-curtain side-impact (requires Safety Package)	S -	S 0	S 0	AM/FM stereo with MP3-compatible CD player	S	S	S
Brake controller: trailer, ABS-integrated <sup>17</sup>	0	0	0	AM/FM stereo with MP3-compatible in-dash six-disc CD changer	-	0	0
Brakes: four-wheel antilock brake system (ABS) with Dynamic Rear Proportioning	S	S	S	Bose <sup>®</sup> sound system	-	-	S
OnStar: <sup>18</sup> with one-year Safe & Sound Plan	S	S	S	Touch-screen navigation radio <sup>20</sup>	-	0	0
Remote Keyless Entry: includes content-theft alarm and two transmitters	0	S	S	XM Radio: <sup>21</sup> includes three trial months of service	S	S	S
				XM NavTraffic <sup>22</sup> includes three trial months of service	-	0	0

PICKUP MODEL	SERIES	DRIVE	TRIM LEVELS	STANDARD ENGINE	HP @ RPM	TORQUE @ RPM	STANDARD TRANSMISSIONS	OPTIONAL ENGINES	GVWR <sup>23</sup> (LBS.)	MAX. PAY-LOAD <sup>24</sup> (LBS.)
EXTENDED CAB SHORT BOX	1500 (1/2-ton)	2WD	Work Truck, LT, LTZ	Vortec 4.3L V6 <sup>25</sup>	195 @ 4600	260 @ 2800	Hydra-Matic 4-speed automatic overdrive	Vortec 4.8L V8, Vortec 5.3L V8, Vortec 6.0L V8	6400	1414
		4x4	Work Truck, LT, LTZ	Vortec 4.8L V8 <sup>25</sup>	295 @ 5600	305 @ 4600	Hydra-Matic 4-speed automatic overdrive	Vortec 5.3L V8, Vortec 6.0L V8	6800	1439
EXTENDED CAB STANDARD BOX	1500 (1/2-ton)	2WD	Work Truck	Vortec 4.3L V6	195 @ 4600	260 @ 2800	Hydra-Matic 4-speed automatic overdrive	Vortec 4.8L V8, Vortec 5.3L V8	6400	1373
		4x4	Work Truck	Vortec 4.8L V8	295 @ 5600	305 @ 4600	Hydra-Matic 4-speed automatic overdrive	Vortec 5.3L V8	7000	1737
MAX Trailering Pack	2500HD (3/4-ton)	2WD/4x4	LT	Vortec 4.8L V8	295 @ 5600	305 @ 4600	Hydra-Matic 4-speed automatic overdrive	Vortec 5.3L V8, Vortec 6.0L V8	6800 (2WD) 7000 (4x4)	1776 (2WD) 1737 (4x4)
		2WD/4x4	LT, LTZ	Vortec 5.3L V8 Vortec FlexFuel 5.3LV8	315 @ 5200 325 @ 5200	338 @ 4400 350 @ 4400	Hydra-Matic 4-speed automatic overdrive <sup>26</sup>	Vortec 6.0L V8	6800 (2WD) 7000 (4x4)	1772 (2WD) 1725 (4x4)
EXTENDED CAB LONG BOX	1500 (1/2-ton)	2WD/4x4	Work Truck, LT, LTZ	Vortec 5.3L V8 Vortec FlexFuel 5.3LV8	315 @ 5200 325 @ 5200	338 @ 4400 350 @ 4400	Hydra-Matic 4-speed automatic overdrive <sup>26</sup>	-	6900 (2WD) 7000 (4x4)	1693 (2WD) 1564 (4x4)
		2500HD (3/4-ton)	2WD/4x4	Work Truck, LT, LTZ	Vortec 6.0L V8	360 @ 5400	380 @ 4200	Hydra-Matic 6-speed automatic overdrive	Duramax Diesel 6.6L V8	9200
	3500HD (1-ton)	2WD/4x4	Work Truck, LT, LTZ	Vortec 6.0L V8	360 @ 5400 <sup>28</sup> 322 @ 4400 <sup>29</sup> 312 @ 4400 <sup>27</sup>	380 @ 4200 380 @ 4200 373 @ 4400 <sup>27</sup>	Hydra-Matic 6-speed automatic overdrive	Duramax Diesel 6.6L V8	9900 <sup>28</sup> 11,400 <sup>29</sup>	4004 <sup>28</sup> /5126 <sup>29</sup> (2WD) 3747 <sup>28</sup> /4879 <sup>29</sup> (4x4)

<sup>1</sup> Requires available Exterior Plus Package. <sup>2</sup> Requires available LTZ Plus Package. <sup>3</sup> Requires available Exterior Plus Package or MAX Trailering Pack. <sup>4</sup> Mirrors are Black. <sup>5</sup> Mirror caps are body-color. <sup>6</sup> Standard on 1500 4x4 models and all HD models. <sup>7</sup> Requires Safety Package. <sup>8</sup> Not available with Z71 Off-Road Package. <sup>9</sup> Included with Z71 Off-Road Package and Snow Plow Prep Package. 2WD models require available Z71 Off-Road Package. <sup>10</sup> Requires available 20-inch chrome-clad wheels. Use only GM-approved wheel and tire combinations. <sup>11</sup> Not available with Vortec 4.3L V6 engine or Solid Smooth Ride suspension. <sup>12</sup> The Bluetooth word mark is a registered trademark owned by Bluetooth SIG, Inc. and any use of such mark by Chevrolet is under license. Go to gm.com/bluetooth to find out which Bluetooth phones are compatible with the vehicle. <sup>13</sup> Requires available Interior Plus Package. <sup>14</sup> Requires available Exterior Plus Package and Safety Package. Not available on Extended Cab Short Box models. <sup>15</sup> Requires available LTZ Plus Package. Not available on Extended Cab Short Box models. <sup>16</sup> Always use safety belts and the correct child restraint for your child's age and size. Even in vehicles equipped with the Passenger Sensing System, children are safer when properly secured in a rear seat in the appropriate infant, child or booster seat. Never place a rear-facing infant restraint in the front seat of any vehicle equipped with an active air bag. See the Owner's Manual and child safety seat instructions for more information. <sup>17</sup> Requires Trailering Package. <sup>18</sup> Call 1-888-4ONSTAR (1-888-466-7827), visit onstar.com and see page 43 for details and system limitations. <sup>19</sup> Light Duty models require V8 engine and 2500HD models require 6' 6" box. Not available on 3500HD. <sup>20</sup> XM Map coverage not available in Puerto Rico and the Virgin Islands. <sup>21</sup> XM is available only in the 48 contiguous United States. Required \$12.95 monthly subscription sold separately after three trial months. All fees and programming subject to change. For more information, visit gm.xmradio.com. <sup>22</sup> Required XM Radio and XM NavTraffic monthly subscriptions sold separately after trial period. XM NavTraffic only available in select markets. All fees and programming subject to change. Subscriptions subject to customer agreement available at gm.xmradio.com. XM service only available in the 48 contiguous United States. <sup>23</sup> Gross Vehicle Weight Rating (GVWR). When properly equipped; includes vehicle, passengers, cargo and equipment. <sup>24</sup> Maximum payload capacity includes weight of driver, passengers, optional equipment and cargo. Cargo and load capacity limited by weight and distribution. <sup>25</sup> Standard engine depends on trim level. <sup>26</sup> Hydra-Matic 6-speed automatic transmission available mid-model year. <sup>27</sup> HD models with box delete and incomplete chassis cab vehicles. <sup>28</sup> Single-Rear Wheel. <sup>29</sup> Dual-Rear Wheel.

# SILVERADO & SILVERADO HD CREW CAB BUYER'S GUIDE

S = Standard O = Optional - = Not Available

EXTERIOR	WT	LS <sup>1</sup>	LT	Ltz
Cargo Management System: configurable, sliding hook system in pickup bed	0	0	0	0
Exterior Plus Package: includes remote vehicle starter system; Universal Home Remote; EZ Lift locking tailgate; power, heated outside mirrors with turn-signal indicators in glass, driver-side auto-dimming feature, power-foldaway feature and curb-tilt; and foglamps	-	-	0	-
EZ Lift Tailgate Package: includes lockable EZ Lift tailgate	-	-	0 <sup>2</sup>	0 <sup>3</sup>
Fog lamps: halogen	-	-	0 <sup>4</sup>	S
LS Package: includes 17-inch chrome styled-steel wheels, chrome-surround grille and front bumper, and body-color front bumper end caps (1500 models)	0	-	-	-
Ltz Plus Package: includes EZ Lift locking tailgate, Rainsense windshield wipers and Universal Home Remote	-	-	-	0
Mirrors: - Black, foldaway outside - Black, foldaway, power, heated outside - power, heated outside with turn-signal indicators in glass, driver-side auto-dimming feature, power-foldaway feature and curb-tilt - trailing, high-visibility vertical, manual foldaway and extendable, Black with lower convex spotter glass - trailing, vertical, power, heated, manual foldaway and extendable, Black with turn-signal indicators and lower convex spotter glass	S - - 0 -	- S - - -	- S - - 0	- - S <sup>5</sup> - 0
Recovery hooks: two front	0 <sup>7</sup>	0 <sup>7</sup>	S	S
Ultrasonic Rear Parking Assist <sup>8</sup>	-	-	0	0
Windshield washer fluid system: heated	-	-	-	S
Wipers: flat, intermittent with Rainsense <sup>1</sup>	-	-	-	0 <sup>3</sup>

## ENGINE/CHASSIS

Differential: automatic locking rear	0	0	0	S
Engine block heater	0	0	0	0
Fuel capacities (approximate): - Short and Standard Box models (26-gallon) - Long Box models (34-gallon)	S S	S -	S S	S S
MAX Trailing Pack: <sup>9</sup> includes automatic locking rear differential, 9.5-inch rear axle, front and rear disc brakes, Z85 Handling/Trailing suspension, and heavy-duty trailing equipment (1500 Short Box models only)	-	-	0	0
Power Pack Plus: includes Vortec 5.3L V8 engine, automatic locking rear differential, heavy-duty trailing equipment and 17-in. custom aluminum wheels (1500 models)	-	-	0	-
Oil coolers: - transmission, auxiliary, heavy-duty, external (requires Trailing Package or six-speed auto. transmission in 1500 models; standard in HD models) - engine, heavy-duty, external (requires six-speed auto. transmission in 1500 models; standard in HD models)	0 0	0 -	0 0	S 0
Skid Plate Package: <sup>10</sup> includes frame-mounted shield protecting front underbody, oil pan, differential case and transfer case (on 4x4 models)	0	0	0	0

ENGINE/CHASSIS (CONTINUED)	WT	LS <sup>1</sup>	LT	Ltz
Suspensions: - Z83 Solid Smooth Ride (1500 models) - Z85 Handling/Trailing (1500 models; standard on HD models) - Z60 High-Performance <sup>1</sup> (1500 models) - Z71 Off-Road (1500 and HD SRW models)	S 0 - -	S 0 - -	- S 0 0	- S 0 0
Trailing Package: includes trailer hitch platform, seven-wire harness mated to seven-way sealed connector, trailer brake control jumper under-dash harness, sealed connector for center high-mounted brake lamp and external transmission oil cooler	0 <sup>12</sup>	0	0	S
Transfer cases (4x4 models only): - floor-mounted, manual shift-on-the-fly - Autotrac, active (1500 models) - electronic with rotary dial (HD models)	S - -	S - -	- S S	- S S
Z71 Off-Road Package: includes Skid Plate Package; off-road jounce bumpers, shock absorbers and stabilizer bars; high-capacity air cleaner in 1500 models; Z71 decals; and automatic locking rear differential (1500 and HD SRW models)	-	-	0	0

SEATING	WT	LS <sup>1</sup>	LT	Ltz
Vinyl 40/20/40 split-bench seats with recliners	S	-	-	-
Cloth 40/20/40 split-bench seats with recliners	0	S	-	-
Premium Cloth 40/20/40 split-bench front seats with recliners, fold-down center armrest with storage, and lockable underseat storage (also available with Custom Leather-appointed trim)	-	-	S	-
Premium Cloth reclining, six-way power-adjustable front bucket seats (also available with Custom Leather-appointed trim)	-	-	0	-
Custom Leather-appointed, reclining, heated, 10-way power-adjustable front bucket seats	-	-	-	S
Rear seats: flip-up, 60/40 split-bench	S	S	S	S

INTERIOR	WT	LS <sup>1</sup>	LT	Ltz
Bluetooth <sup>®</sup> wireless technology for compatible phones <sup>3</sup>	-	-	0	S
Climate (temperature) control: single-zone, manual	S	S	S	-
Climate (temperature) controls: dual-zone, automatic	-	-	0 <sup>14</sup>	S
Cruise control	0	S	S	S
Defogger: rear-window (not available with power-sliding rear window)	0	0	0	S
Door locks: power, programmable	S	S	S	S
Driver Information Center (DIC) Display	S	S	S	S
DIC controls (LT requires Interior Plus Package)	-	-	0	S
Glove boxes: dual	S	S	S	-
Interior Plus Package: includes six-way power-adjustable driver seat, steering wheel-mounted audio controls, Bluetooth <sup>®</sup> wireless technology for compatible phones <sup>3</sup> and dual-zone automatic temperature controls	-	-	0	-
Mirror, inside rearview: auto-dimming	-	-	0	S

INTERIOR (CONTINUED)	WT	LS <sup>1</sup>	LT	Ltz
Rearview camera system	-	-	0 <sup>15</sup>	0 <sup>3</sup>
Remote vehicle starter system	-	-	0 <sup>2</sup>	S
Steering column: Tilt-Wheel, adjustable	S	S	S	S
Steering wheel-mounted controls: audio system	-	-	0 <sup>14</sup>	S
Sunroof: power-sliding with Express-Open and -Close with wind deflector	-	-	0 <sup>14</sup>	0
Window: power-sliding, rear	-	-	0	0
Windows: power, full-drop with driver's Express-Down feature	-	S	S	S

SAFETY AND SECURITY	WT	LS <sup>1</sup>	LT	Ltz
Air bags: <sup>16</sup> - driver and right-front passenger with Passenger Sensing System - front and rear head-curtain side-impact (requires Safety Package)	S -	S -	S 0	S 0
Brake controller: trailer, ABS-integrated <sup>17</sup>	0	0	0	0
Brakes: four-wheel antilock brake system (ABS) with Dynamic Rear Proportioning	S	S	S	S
OnStar: <sup>18</sup> with one-year Safe & Sound Plan	S	S	S	S

SAFETY AND SECURITY (CONTINUED)	WT	LS <sup>1</sup>	LT	Ltz
Remote Keyless Entry: includes content-theft alarm and two transmitters	S	S	S	S
Safety Package: includes power-adjustable pedals, head-curtain side-impact air bags and Ultrasonic Rear Parking Assist	-	-	0	0
StabiliTrak Electronic Stability Control System <sup>19</sup>	S	S	S	S

AUDIO SYSTEMS	WT	LS <sup>1</sup>	LT	Ltz
AM/FM stereo with MP3-compatible CD player	S	S	S	S
AM/FM stereo with MP3-compatible in-dash six-disc CD changer	-	-	0	0
Bose <sup>®</sup> sound system	-	-	0 <sup>20</sup>	S
DVD entertainment system: rear-seat	-	-	0 <sup>20</sup>	0
Rear-seat audio controls	-	-	0 <sup>20</sup>	S
Touch-screen navigation radio <sup>21</sup>	-	-	0	0
XM Radio: <sup>22</sup> includes three trial months of service	S	S	S	S
XM NavTraffic <sup>23</sup> includes three trial months of service	-	-	0	0

PICKUP MODEL	SERIES	DRIVE	TRIM LEVELS	STANDARD ENGINE	HP @ RPM	TORQUE @ RPM	STANDARD TRANSMISSIONS	OPTIONAL ENGINES	GVWR <sup>24</sup> (LBS.)	MAX. PAYLOAD <sup>25</sup> (LBS.)
<b>CREW CAB SHORT BOX</b>	1500 (1/2-ton)	2WD/4x4	Work Truck, LS, <sup>1</sup> LT, LTZ	Vortec 4.8L V8 <sup>26</sup>	295 @ 5600	305 @ 4600	Hydra-Matic 4-speed automatic overdrive	Vortec 5.3L V8, Vortec 6.0L V8, Vortec 6.2L V8	6800 (2WD) 7000 (4x4)	1573 (2WD) 1652 (4x4)
MAX Trailing Pack	1500 (1/2-ton)	2WD/4x4	LT, LTZ	Vortec 6.0L V8	367 @ 5400	375 @ 4300	Hydra-Matic 6-speed automatic overdrive	-	7100 (2WD) 7300 (4x4)	1909 (2WD) 1856 (4x4)
<b>CREW CAB STANDARD BOX</b>	2500HD (3/4-ton)	2WD/4x4	Work Truck, LT, LTZ	Vortec 6.0L V8	360 @ 5600 312 @ 4400 <sup>27</sup>	380 @ 4200 373 @ 4400 <sup>27</sup>	Hydra-Matic 6-speed automatic overdrive	Duramax Diesel 6.6L V8	9200	3480 (2WD) 3241 (4x4)
<b>CREW CAB LONG BOX</b>	2500HD (3/4-ton)	2WD/4x4	Work Truck, LT, LTZ	Vortec 6.0L V8	360 @ 5600	380 @ 4200	Hydra-Matic 6-speed automatic overdrive	Duramax Diesel 6.6L V8	9200	3321 (2WD) 3059 (4x4)
	3500HD (1-ton)	2WD/4x4	Work Truck, LT, LTZ	Vortec 6.0L V8	360 @ 5400 <sup>28</sup> 322 @ 4400 <sup>29</sup> 312 @ 4400 <sup>27</sup>	380 @ 4200 380 @ 4200 373 @ 4400 <sup>27</sup>	Hydra-Matic 6-speed automatic overdrive	Duramax Diesel 6.6L V8	9900 <sup>28</sup> 1400 <sup>29</sup>	3873 <sup>28</sup> /4996 <sup>29</sup> (2WD) 3592 <sup>28</sup> /4728 <sup>29</sup> (4x4)

<sup>1</sup> 1500 models only. <sup>2</sup> Requires Exterior Plus Package. <sup>3</sup> Requires LTZ Plus Package. <sup>4</sup> Requires Exterior Plus Package or MAX Trailing Pack. <sup>5</sup> Mirrors are Black. <sup>6</sup> Mirror caps are body-color. <sup>7</sup> Standard on 1500 4x4 models and all HD models. <sup>8</sup> Requires Safety Package. <sup>9</sup> Not available with Z71 Off-Road Package. <sup>10</sup> Included with Z71 Off-Road Package and Snow Plow Prep Package. 2WD models require Z71 Off-Road Package. <sup>11</sup> Requires available 20-inch chrome-clad wheels. <sup>12</sup> Not available with Vortec 4.3L V6 engine or Solid Smooth Ride suspension. <sup>13</sup> The Bluetooth word mark is a registered trademark owned by Bluetooth SIG, Inc. and any use of such mark by Chevrolet is under license. Go to gm.com/bluetooth to find out which Bluetooth phones are compatible with the vehicle. <sup>14</sup> Requires Interior Plus Package. <sup>15</sup> Requires Exterior Plus Package and Safety Package. <sup>16</sup> Always use safety belts and the correct child restraint for your child's age and size. Even in vehicles equipped with the Passenger Sensing System, children are safer when properly secured in a rear seat in the appropriate infant, child or booster seat. Never place a rear-facing infant restraint in the front seat of any vehicle equipped with an active air bag. See the Owner's Manual and child safety seat instructions for more information. <sup>17</sup> Light Duty models require V8 engine and HD models requires 6' 6" box. <sup>18</sup> Call 1-888-4ONSTAR (1-888-466-7827), visit onstar.com and see page 43 for details and system limitations. <sup>19</sup> Light Duty models require V8 engine and 2500HD models require 6' 6" box. Not available on 3500HD. <sup>20</sup> Requires front bucket seats on LT models. <sup>21</sup> Map coverage not available in Puerto Rico and the Virgin Islands. <sup>22</sup> XM is available only in the 48 contiguous United States. Required \$12.95 monthly subscription sold separately after three trial months. All fees and programming subject to change. For more information, visit gm.xmradio.com. <sup>23</sup> Required XM Radio and XM NavTraffic monthly subscriptions sold separately after trial period. Subscriptions subject to Customer Agreement available at xmradio.com. XM service only available in the 48 contiguous United States. Requires navigation radio. <sup>24</sup> Gross Vehicle Weight Rating (GVWR). When properly equipped; includes vehicle, passengers, cargo and equipment. <sup>25</sup> Maximum payload capacity includes weight of driver, passengers, optional equipment and cargo. Cargo and load capacity limited by weight and distribution. <sup>26</sup> Standard engine depends on trim level. <sup>27</sup> HD models with box delete and incomplete chassis cab vehicles. <sup>28</sup> Single-Rear Wheel. <sup>29</sup> Dual-Rear Wheel.

# SILVERADO & SILVERADO HD BALL-HITCH TRAILERING

## SILVERADO 1500 BALL-HITCH TRAILERING

Weight-carrying hitch limit: 5,000-lb. trailer with 600-lb. tongue weight. Z85 Handling/Trailer Suspension or Z71 Off-Road Suspension and a weight-distributing hitch with sway control required over 5,000-lb. trailer weight. Please read the Trailering Basics on page 39 before towing a trailer with any Chevy Truck.

VORTEC 4.3L V6	BOX LENGTH (FT.)	MAX. TRAILER WEIGHT <sup>1</sup> (LBS.)	REQUIRED AXLE RATIO	GCWR <sup>2</sup> (LBS.)
1500 2WD Regular Cab	6' 6"/8'	4800/4700	3.23	9500
1500 2WD Extended Cab	5' 8"/6' 6"	4400/4400	3.23	9500
1500 4x4 Regular Cab	6' 6"/8'	5100/4900	3.73	10,000
<b>VORTEC 4.8L V8</b>				
1500 2WD Regular Cab	6' 6"/8' 6' 6"/8'	5200/5100 7200/7100	3.23 3.73	10,000 12,000
1500 2WD Extended Cab	5' 8"/6' 6" 5' 8"/6' 6" 5' 8"/6' 6"	4700 5800 6800/6700	3.23 3.42 3.73	10,000 11,000 12,000
1500 2WD Crew Cab	5' 8" 5' 8"	4700 6700	3.23 3.73	10,000 12,000
1500 4x4 Regular Cab	6' 6"/8'	6000/5800	3.42	11,000
1500 4x4 Extended Cab	5' 8"/6' 6"	5500/5500	3.42	11,000
1500 4x4 Crew Cab	5' 8"	5400	3.42	11,000
<b>VORTEC 5.3L V8</b>				
1500 2WD Regular Cab	6' 6"/8' 6' 6"/8'	7200/7000 8200/8000	3.42 3.73	12,000 13,000
1500 2WD Regular Cab w/ 6-speed auto. trans. <sup>3,4</sup>	6' 6" 8'	9200 10000	3.42 3.42	13,000 15,000
1500 2WD Extended Cab	5' 8" 5' 8" 6' 6" 6' 6"/8'	6800 7800 6700 7700/7600	3.42 3.73 3.42 3.73	12,000 13,000 12,000 13,000
1500 2WD Extended Cab w/ 6-speed auto. trans. <sup>3,4</sup>	6' 6"/8'	9700/9500	3.42	15,000
1500 2WD Crew Cab	5' 8" 5' 8"	6100 9600 <sup>3</sup>	3.42 3.42	11,500 15,000
1500 4x4 Regular Cab	6' 6"/8' 6' 6"/8'	7900/7900 8900/8900	3.73 4.10	13,000 13,000
1500 4x4 Regular Cab w/ 6-speed auto. trans. <sup>3,4</sup>	6' 6" 8'	8900 9800	3.42 3.42	14,000 15,000
1500 4x4 Extended Cab	5' 8" 5' 8" 6' 6"/8' 6' 6"	7500 8500 7500/7600 8500	3.73 4.10 3.73 4.10	13,000 14,000 13,000 14,000
1500 4x4 Extended Cab w/ 6-speed auto. trans. <sup>3,4</sup>	6' 6"/8'	9400/9200	3.42	15,000
1500 4x4 Crew Cab	5' 8" 5' 8"	6000 9500 <sup>3</sup>	3.42 3.42	11,500 15,000

VORTEC 6.0L V8	BOX LENGTH (FT.)	MAX. TRAILER WEIGHT <sup>1</sup> (LBS.)	REQUIRED AXLE RATIO	GCWR <sup>2</sup> (LBS.)
1500 2WD Extended Cab <sup>3</sup>	5' 8"	9700	3.42	15,000
1500 4x4 Extended Cab <sup>3</sup>	5' 8"	9400	3.42	15,000
1500 2WD Extended Cab <sup>3</sup>	6' 6"	9700	3.42	15,000
1500 2WD Extended Cab – MAX Trailering Pack	6' 6"	10,700	3.73	16,000
1500 4x4 Extended Cab <sup>3</sup>	6' 6"	9400	3.42	15,000
1500 4x4 Extended Cab – MAX Trailering Pack	6' 6"	10,400	3.73	16,000
1500 2WD Crew Cab <sup>3</sup>	5' 8"	9600	3.42	15,000
1500 2WD Crew Cab – MAX Trailering Pack	5' 8"	10,600	3.73	16,000
1500 4x4 Crew Cab <sup>3</sup>	5' 8"	9300	3.42	15,000
1500 4x4 Crew Cab – MAX Trailering Pack	5' 8"	10,400	3.73	16,000
<b>VORTEC 6.2L V8</b>				
1500 Crew Cab 2WD – MAX Trailering Pack	5' 8"	10,600	3.73	16,000
1500 Crew Cab 2WD <sup>3</sup>	5' 8"	9600	3.42	15,000
1500 Crew Cab 4x4 – MAX Trailering Pack	5' 8"	10,400	3.73	16,000
1500 Crew Cab 4x4 <sup>3</sup>	5' 8"	9300	3.42	15,000

## SILVERADO 2500HD AND 3500HD BALL-HITCH TRAILERING

Weight-carrying hitch limit: 7,500-lb. trailer with 1,000-lb. tongue weight. Weight-distributing hitch with sway control required over 7,500-lb. trailer weight. Please read the Trailering Basics on page 39 before towing a trailer with any Chevy Truck.

VORTEC 6.0L V8	BOX LENGTH (FT.)	MAX. TRAILER WEIGHT <sup>1</sup> (LBS.)	REQUIRED AXLE RATIO	GCWR <sup>2</sup> (LBS.)
2500HD Regular Cab 2WD	8'	10,500 13,000	3.73 4.10	16,000 18,500
2500HD Regular Cab 4x4	8'	10,200 12,700	3.73 4.10	16,000 18,500
2500HD Extended Cab 2WD	6' 6"/8'	10,200/10,000 12,700/12,500	3.73 4.10	16,000 18,500
2500HD Extended Cab 4x4	6' 6"/8'	9900/9800 12,400/12,300	3.73 4.10	16,000 18,500
2500HD Crew Cab 2WD	6' 6"/8'	10,000/9900 12,500/12,400	3.73 4.10	16,000 18,500
2500HD Crew Cab 4x4	6' 6"/8'	9800/9600 12,300/12,100	3.73 4.10	16,000 18,500
3500HD SRW Regular Cab 4x4	8'	10,000 12,500	3.73 4.10	16,000 18,500
3500HD SRW Extended Cab 2WD	8'	9900 12,400	3.73 4.10	16,000 18,500
3500HD SRW Extended Cab 4x4	8'	9600 12,100	3.73 4.10	16,000 18,500
3500HD SRW Crew Cab 2WD	8'	9700 12,200	3.73 4.10	16,000 18,500

VORTEC 6.0L V8 (CONTINUED)	BOX LENGTH (FT.)	MAX. TRAILER WEIGHT <sup>1</sup> (LBS.)	REQUIRED AXLE RATIO	GCWR <sup>2</sup> (LBS.)
3500HD SRW Crew Cab 4x4	8'	9400 11,900	3.73 4.10	16,000 18,500
3500HD DRW Regular Cab 4x4	8'	9700 12,200	3.73 4.10	16,000 18,500
3500HD DRW Extended Cab 2WD	8'	9500 12,000	3.73 4.10	16,000 18,500
3500HD DRW Extended Cab 4x4	8'	9200 11,700	3.73 4.10	16,000 18,500
3500HD DRW Crew Cab 2WD	8'	9300 11,800	3.73 4.10	16,000 18,500
3500HD DRW Crew Cab 4x4	8'	9100 11,600	3.73 4.10	16,000 18,500

## DURAMAX DIESEL 6.6L V8 TURBO

2500HD Regular Cab 2WD	8'	13,000	3.73	22,000
2500HD Regular Cab 4x4	8'	13,000	3.73	22,000
2500HD Extended Cab 2WD	6' 6"/8'	13,000/13,000	3.73	22,000
2500HD Extended Cab 4x4	6' 6"/8'	13,000/13,000	3.73	22,000
2500HD Crew Cab 2WD	6' 6"/8'	13,000/13,000	3.73	22,000
2500HD Crew Cab 4x4	6' 6"/8'	13,000/13,000	3.73	22,000
3500HD SRW Regular Cab 4x4	8'	13,000	3.73	22,000
3500HD SRW Extended Cab 2WD	8'	13,000	3.73	22,000
3500HD SRW Extended Cab 4x4	8'	13,000	3.73	22,000
3500HD SRW Crew Cab 2WD	8'	13,000	3.73	22,000
3500HD SRW Crew Cab 4x4	8'	13,000	3.73	22,000
3500HD DRW Regular Cab 4x4	8'	13,000	3.73	23,500
3500HD DRW Extended Cab 2WD	8'	13,000	3.73	23,500
3500HD DRW Extended Cab 4x4	8'	13,000	3.73	23,500
3500HD DRW Crew Cab 2WD	8'	13,000	3.73	23,500
3500HD DRW Crew Cab 4x4	8'	13,000	3.73	23,500

SRW – Single-Rear Wheel. DRW – Dual-Rear Wheel. **1** Maximum trailer weight ratings are calculated assuming a base vehicle, except for any option(s) necessary to achieve the rating, plus driver. The weight of other optional equipment, passengers and cargo will reduce the maximum trailer weight your vehicle can tow. See your Chevy dealer for additional details. **2** Gross Combination Weight Rating. **3** With Heavy Duty Cooling Package. **4** Interim availability. NOTE: Trailer tongue weight should be 10 to 15 percent of total loaded trailer weight (up to 1,500 lbs. on 2500HD and 3500HD models). Trailer kingpin weight should be 15 to 25 percent of total loaded trailer weight (up to 3,000 lbs. on 2500HD and up to 3,500 lbs. on 3500HD models). **■** Addition of trailer tongue weight/trailer kingpin weight cannot cause vehicle weights to exceed Rear Gross Axle Weight Rating (RGAWR) or Gross Vehicle Weight Rating (GVWR). These ratings can be found on the certification label located on the driver door or doorframe.

## TRAILERING BASICS

**NOTE:** Towing a trailer involves all major vehicle systems of your Chevy Truck. Easy and safe trailering requires a properly equipped vehicle, additional trailering equipment and an appropriate trailer. It also requires loading both the vehicle and trailer properly, using safe driving techniques, meeting regional legal requirements, and following break-in and maintenance schedules. The vehicle owner is responsible for obtaining the proper equipment (hitch ball, hitch type of the proper size, type and capacity) required to safely tow both the trailer and the load that will be towed. For more information, consult your Owner's Manual or speak to a trailering expert at your Chevrolet dealership. These charts will assist in determining how to best equip your Chevy Truck for trailering. To help you understand the charts, consider these trailering factors:

**RGAWR AND GVWR:** Addition of trailer hitch weight cannot cause vehicle weights to exceed Rear Gross Axle Weight Rating (RGAWR) or Gross Vehicle Weight Rating (GVWR). These ratings can be found on the certification label located on the driver door or doorframe.

**GCWR:** The Gross Combination Weight Rating is the total allowable weight of the completely loaded vehicle and trailer.

**MAXIMUM TRAILER RATING:** This rating is determined by subtracting the tow vehicle's weight (curb weight) from the GCWR. When a base vehicle (curb) weight is used, additional passenger, equipment and cargo weight reduces this rating.

**NOTE:** The safety steps described here are by no means the only precautions to be taken when trailering. See the Owner's Manual for your Chevy Silverado for additional guidelines and trailering tips.

**TRAILERING CAUTION:** If you don't use the correct equipment and drive properly, you can lose control of your vehicle when you pull a trailer. If the trailer is too heavy, your vehicle brakes may be less effective. You and your passengers could be seriously injured. Pull a trailer only after you have taken the following steps.

**TRAILER BRAKES:** If your trailer weighs more than 2,000 lbs. loaded, then it must have its own adequate brakes. Be sure to read and follow the instructions for the trailer brake controller so that it is installed, adjusted and maintained properly. **■** Don't tap into your vehicle's brake system if the trailer's brake system will use more than 0.02 cu. in. of fluid from your vehicle's master cylinder. If it does, neither braking system will work well. **■** The trailer brake parts must be able to take 3,000 psi of pressure. If everything checks out thus far, have a qualified individual make the brake fluid tap at the master cylinder port that sends fluid to the rear brakes. Use only double-walled steel brake tubing.

**HITCHES:** It's important to have the correct hitch equipment. **■** If you'll be towing a trailer that, when loaded, will weigh more than 5,000 lbs.<sup>1</sup> be sure to use a frame-mounted, weight-distributing hitch and sway control of the proper size. **■** If you have to make any holes in the body of your vehicle to install a trailer hitch, be sure to seal the holes if you ever remove the hitch. If they're not sealed, dirt, water and deadly carbon monoxide from the exhaust can get into your vehicle.

**FIFTH-WHEEL TRAILERING:** Silverado pickups can be equipped with a fifth-wheel or gooseneck trailer hitch. **■** Follow the manufacturer's directions for installation, but note that the hitch must be attached to the truck frame. Do not use the pickup bed for additional support. For proper kingpin tongue load distribution and control of the trailer, the hitch must be mounted so the kingpin load is placed ahead of the rear axle centerline. **■** Fifth-wheel trailer kingpin loads are higher than conventional trailer tongue loads, so pay careful attention to the truck's payload capacity and rear axle weight ratings. **■** Your Chevy dealer can help you calculate the maximum allowable payload and GVWR required for your fifth-wheel trailering application. The weight of any additional equipment and all passengers other than the driver must be subtracted from the payload weight to determine the maximum kingpin load available.

<sup>1</sup> Maximum trailer rating may be less depending on powertrain combinations.

# SILVERADO & SILVERADO HD FIFTH-WHEEL TRAILERING

## SILVERADO 1500 FIFTH-WHEEL TRAILERING

Fifth-wheel trailering with a Silverado 1500 requires Z85 Handling/Trailer Suspension or Z71 Off-Road Package. Please read the Trailering Basics on page 39 before towing a trailer with any Chevy Truck.

VORTEC 4.8L V8	BOX LENGTH (FT.)	MAX. TRAILER WEIGHT <sup>1</sup> (LBS.)	REQUIRED AXLE RATIO	GCWR <sup>2</sup> (LBS.)
1500 2WD Regular Cab	6' 6"/8'	7200/7100	3.73	12,000
1500 2WD Extended Cab	6' 6"	6700	3.73	12,000

VORTEC 5.3L V8	BOX LENGTH (FT.)	MAX. TRAILER WEIGHT <sup>1</sup> (LBS.)	REQUIRED AXLE RATIO	GCWR <sup>2</sup> (LBS.)
1500 2WD Regular Cab	6' 6"/8' 6' 6"/8'	7200/7000 8200/8000	3.42 3.73	12,000 13,000
1500 2WD Regular Cab w/ 6-speed auto. trans <sup>3,4</sup>	6' 6" 8'	9200 8700	3.42 3.42	13,000 15,000
1500 2WD Extended Cab	6' 6" 6' 6"/8'	6700 7700/7500	3.42 3.73	12,000 13,000
1500 2WD Extended Cab w/ 6-speed auto. trans <sup>3,4</sup>	6' 6"/8'	9100/8700	3.42	15,000
1500 4x4 Regular Cab	6' 6"/8' 6' 6"/8'	7900/7800 8300/8800	3.73 4.10	13,000 13,000
1500 4x4 Regular Cab w/ 6-speed auto. trans <sup>3,4</sup>	6' 6" 8'	8100 9500	3.42 3.42	14,000 15,000
1500 4x4 Extended Cab	6' 6"/8'	7500/7600	3.73	13,000
1500 4x4 Extended Cab w/ 6-speed auto. trans <sup>3,4</sup>	6' 6"/8'	8900/7700	3.42	15,000

## VORTEC 6.0L V8

1500 2WD Extended Cab <sup>3</sup>	6' 6"	8700	3.42	15,000
1500 2WD Extended Cab – MAX Trailering Pack	6' 6"	10,000	3.73	16,000
1500 4x4 Extended Cab <sup>3</sup>	6' 6"	8400	3.42	12,000
1500 4x4 Extended Cab – MAX Trailering Pack	6' 6"	9700	3.73	16,000

## SILVERADO 2500HD AND 3500HD FIFTH-WHEEL TRAILERING

Please read the Trailering Basics on page 39 before towing a trailer with any Chevy Truck.

VORTEC 6.0L V8	BOX LENGTH (FT.)	MAX. TRAILER WEIGHT <sup>1</sup> (LBS.)	REQUIRED AXLE RATIO	GCWR <sup>2</sup> (LBS.)
2500HD Regular Cab 2WD	8' 8'	10,500 13,000	3.73 4.10	16,000 18,500
2500HD Regular Cab 4x4	8' 8'	10,200 12,700	3.73 4.10	16,000 18,500
2500HD Extended Cab 2WD	6' 6"/8' 6' 6"/8'	10,200/10,000 12,700/12,500	3.73 4.10	16,000 18,500
2500HD Extended Cab 4x4	6' 6"/8' 6' 6"/8'	9900/9800 12,400/12,300	3.73 4.10	16,000 18,500

SRW – Single-Rear Wheel. DRW – Dual-Rear Wheel. <sup>1</sup> Maximum trailer weight ratings are calculated assuming a base vehicle, except for any option(s) necessary to achieve the rating, plus driver. The weight of other optional equipment, passengers and cargo will reduce the maximum trailer weight your vehicle can tow. See your Chevy dealer for additional details. <sup>2</sup> Gross Combination Weight Rating. <sup>3</sup> With Heavy Duty Cooling Package. <sup>4</sup> Interim availability. NOTE: Trailer tongue weight should be 10 to 15 percent of total loaded trailer weight (up to 1,500 lbs. on 2500HD and 3500HD models). Trailer kingpin weight should be 15 to 25 percent of total loaded trailer weight (up to 3,000 lbs. on 2500HD and up to 3,500 lbs. on 3500HD models). ■ Addition of trailer tongue weight/trailer kingpin weight cannot cause vehicle weights to exceed Rear Gross Axle Weight Rating (RGAWR) or Gross Vehicle Weight Rating (GVWR). These ratings can be found on the certification label located on the driver door or doorframe. ■ Fifth-wheel hitch is available as a dealer-installed accessory on select models. See the Trailering Basics on page 39 for more trailering information.

## VORTEC 6.0L V8 (CONTINUED)

	BOX LENGTH (FT.)	MAX. TRAILER WEIGHT <sup>1</sup> (LBS.)	REQUIRED AXLE RATIO	GCWR <sup>2</sup> (LBS.)
2500HD Crew Cab 2WD	6' 6"/8' 6' 6"/8'	10,000/9900 12,500/12,400	3.73 4.10	16,000 18,500
2500HD Crew Cab 4x4	6' 6"/8' 6' 6"/8'	9800/9600 12,300/12,100	3.73 4.10	16,000 18,500
3500HD SRW Regular Cab 4x4	8' 8'	10,000 12,500	3.73 4.10	16,000 18,500
3500HD SRW Extended Cab 2WD	8' 8'	9900 12,400	3.73 4.10	16,000 18,500
3500HD SRW Extended Cab 4x4	8' 8'	9600 12,100	3.73 4.10	16,000 18,500
3500HD SRW Crew Cab 2WD	8' 8'	9700 12,200	3.73 4.10	16,000 18,500
3500HD SRW Crew Cab 4x4	8' 8'	9400 11,900	3.73 4.10	16,000 18,500
3500HD DRW Regular Cab 4x4	8' 8'	9700 12,200	3.73 4.10	16,000 18,500
3500HD DRW Extended Cab 2WD	8' 8'	9500 12,000	3.73 4.10	16,000 18,500
3500HD DRW Extended Cab 4x4	8' 8'	9200 11,700	3.73 4.10	16,000 18,500
3500HD DRW Crew Cab 2WD	8' 8'	9300 11,800	3.73 4.10	16,000 18,500
3500HD DRW Crew Cab 4x4	8' 8'	9100 11,600	3.73 4.10	16,000 18,500

## DURAMAX DIESEL 6.6L V8 TURBO

2500HD Regular Cab 2WD	8'	15,800	3.73	22,000
2500HD Regular Cab 4x4	8'	15,500	3.73	22,000
2500HD Extended Cab 2WD	6' 6"/8'	15,500/15,300	3.73	22,000
2500HD Extended Cab 4x4	6' 6"/8'	14,500/13,800	3.73	22,000
2500HD Crew Cab 2WD	6' 6"/8'	15,300/14,500	3.73	22,000
2500HD Crew Cab 4x4	6' 6"/8'	13,900/12,700	3.73	22,000
3500HD SRW Regular Cab 4x4	8'	15,400	3.73	22,000
3500HD SRW Extended Cab 2WD	8'	15,100	3.73	22,000
3500HD SRW Extended Cab 4x4	8'	14,900	3.73	22,000
3500HD SRW Crew Cab 2WD	8'	15,000	3.73	22,000
3500HD SRW Crew Cab 4x4	8'	14,800	3.73	22,000
3500HD DRW Regular Cab 4x4	8'	16,500	3.73	23,500
3500HD DRW Extended Cab 2WD	8'	16,300	3.73	23,500
3500HD DRW Extended Cab 4x4	8'	16,100	3.73	23,500
3500HD DRW Crew Cab 2WD	8'	16,200	3.73	23,500
3500HD DRW Crew Cab 4x4	8'	15,900	3.73	23,500

# IMPORTANT INFORMATION.

**THE BEST COVERAGE IN AMERICA.** Every 2009 Chevy passenger car, light-duty truck, SUV and crossover comes with a 100,000 mile/5-year (whichever comes first) transferable Powertrain Limited Warranty. Plus, you get 100,000 miles/5 years (whichever comes first) of 24/7 Roadside Assistance, Courtesy Transportation and much more. See dealer for details.

**NEW VEHICLE LIMITED WARRANTY.** GM vehicles registered in the U.S.A. are covered for 3 years/36,000 miles (whichever comes first). The complete vehicle is covered, including tires, towing to your nearest Chevrolet dealership and cosmetic corrosion resulting from defects. Repairs will be made to correct any vehicle defect, and most warranty repairs will be made at no charge. In addition, rust-through corrosion will be covered for 6 years/100,000 miles (whichever comes first). Powertrain components will be covered for 100,000 miles/5 years (whichever comes first). See dealer for details.

**SILVERADO HYBRID WARRANTY.** In addition to the transferable Chevy 36,000-mile/3-year (whichever comes first) New Vehicle Limited Warranty and the 100,000-mile/5-year (whichever comes first) Powertrain Limited Warranty, GM will also warrant certain hybrid components on Silverado Hybrid models for 100,000 miles/8 years (whichever comes first). No deductibles are associated with the Silverado Hybrid warranty, which is transferable to any subsequent persons assuming ownership of the vehicle during the 100,000-mile/8-year warranty period. See your Chevy dealer for details.

**ENGINES.** Chevrolet products are equipped with engines produced by GM Powertrain or other suppliers to GM worldwide. The engines in Chevrolet products may also be used in other GM makes and models.

**ASSEMBLY.** Chevrolet vehicles and their components are assembled or produced by different operating units of General Motors, its subsidiaries or suppliers to GM

# WE'VE GOT YOUR BACK.

At Chevrolet, giving you a completely satisfying ownership experience is our top priority. That's why if you ever need assistance, feel free to contact us at these web sites or phone numbers.

**CHEVY.COM.** Offers shopping tools such as Build and Price, Find a Vehicle, Request Info, Email Sign-up, Compare Vehicles, Financial Tools...and much more.

**24-HOUR ROADSIDE ASSISTANCE (1-800-CHEV-USA).** Chevrolet Roadside Assistance provides you with the following services for 100,000 miles or 5 years (whichever comes first): Emergency Towing (to closest Chevy dealer on a legal roadway), Lockout Service (keys locked inside vehicle), Flat Tire Changes (spare installed), Fuel Delivery (\$5 worth of fuel delivered on the road) and Jump Starts (at home or on the road). For specific terms and conditions, please contact your Chevrolet Roadside Assistance advisor at 1-800-243-8872. Some services may incur costs.

**COURTESY TRANSPORTATION.** Ask your Chevrolet dealer for Courtesy Transportation if you leave your vehicle for extended repairs under the New Vehicle Limited Warranty or Powertrain Limited Warranty. Ask if you qualify for expense reimbursement and/or vehicle rental. Services vary by dealer.

worldwide. We sometimes find it necessary to produce Chevrolet vehicles with different or differently sourced components than originally scheduled. Since some options may be unavailable when your vehicle is assembled, we suggest you verify that your vehicle includes the equipment you ordered and that, if there were changes, they are acceptable to you.

**AN IMPORTANT NOTE ABOUT ALTERATIONS AND WARRANTIES.** Installations or alterations to the original GM-equipped vehicle (or chassis) are not covered by the General Motors New Vehicle Limited Warranty. The special body company, assembler, equipment installer or upfitter is solely responsible for warranties on the body or equipment and any alterations (or any effect of the alterations) to any of the parts, components, systems or assemblies installed by GM. General Motors is not responsible for the safety or quality of design features, materials or workmanship of any alterations by such suppliers.

**ONSTAR.** OnStar services require vehicle electrical system (including battery), wireless service and GPS satellite signals to be available and operating for features to function properly. OnStar acts as a link to existing emergency service providers. Subscription Service Agreement required. Call 1-888-4ONSTAR (1-888-466-7827) or visit onstar.com for OnStar's Terms and Conditions, Privacy Policy, and details and system limitations. Additional information can be found in the OnStar Owner's Guide.

**A NOTE ABOUT CHILD SAFETY.** Always use safety belts and the correct child restraint for your child's age and size. Even in vehicles equipped with the Passenger Sensing System, children are safer when properly secured in a rear seat in the appropriate infant, child or booster seat. Never place a rear-facing infant restraint in the front seat of any vehicle equipped with an active air bag. See the Owner's Manual and child safety seat instructions for more information.

**CHEVROLET CUSTOMER ASSISTANCE CENTER (1-800-222-1020).** Talk directly to customer relationship managers who can handle any inquiries related to vehicle operation, warranty coverages, or product or service concerns you may have. Please refer to your Owner's Manual for Customer Assistance information.

**CHEVY.COM/SAFETY.** Chevrolet is committed to keeping you and your family safe – from the start of your journey to your destination. That's why every Chevrolet is designed with a comprehensive list of safety and security features to help give you peace of mind.

**GMMOBILITY.COM (1-800-323-9935).** GM Mobility offers financial assistance for eligible adaptive equipment to make automotive travel easier for persons with disabilities or special transportation needs. To learn more about special GM Mobility offers, visit gmmobility.com.

**CHEVROLET OWNER CENTER (CHEVY.COM/MYGLINK).** Register your vehicle with the Chevrolet Owner Center, and receive benefits such as online access to your vehicle Owner's Manual, maintenance schedule reminders, service history tracking, warranty and service information, safety information, special offers and privileges, and news and events.

**MARKETING AND INCENTIVES (CHEVY.COM/SPECIALOFFERS).** Call 1-800-950-CHEV (1-800-950-2438) or visit chevy.com/specialoffers for new product, current incentive and marketing program information.

**IMPORTANT WORDS ABOUT THIS CATALOG.** We have tried to make this catalog comprehensive and factual. We reserve the right, however, to make changes at any time, without notice, in prices, colors, materials, equipment, specifications, models and availability. Specifications, dimensions, measurements, ratings and other numbers in this catalog and other printed materials provided at the dealership or affixed to vehicles are approximates based upon design and engineering drawings, prototypes and laboratory tests. Your vehicle may differ due to variations in manufacture and equipment. Since some information may have been updated since the time of printing, please check with your Chevrolet dealer for complete details. Chevrolet reserves the right to lengthen or shorten the model year for any product for any reason or to start and end model years at different times. Certain vehicle features may lose their usefulness over time due to obsolescence from technological changes. Unless otherwise noted, all claims based on 2008 GM Large Pickup segment and latest available competitive information. Excludes other GM vehicles.

**TRAILERING AND OFF-ROAD INFORMATION.** Please go to chevy.com and carefully review an Owner's Manual for important safety information about trailering or off-road driving in your vehicle.

**GMCARDMEMBERSERVICES.COM.** Did you know about the family of reward credit cards that can help you get a great deal on a new GM car, light-duty truck, SUV or crossover? With a GM reward card, you accrue earnings on every credit card purchase to use toward the purchase or lease of an eligible, new GM vehicle. With three cards to choose from, you're sure to find one that suits you best.

GM, the GM Logo, Chevrolet, the Chevrolet Logo, and the slogans, emblems, vehicle model names, vehicle body designs and other marks appearing in this catalog are the trademarks and/or service marks of General Motors Corporation, its subsidiaries, affiliates or licensors. OnStar, Safe & Sound and Directions & Connections are registered service marks of OnStar Corp. The XM and XM NavTraffic names are registered trademarks of XM Satellite Radio Inc. TheftLock is a registered trademark of Delphi Technologies, Inc. Bose is a registered trademark of the Bose Corp. iPod and iPhone are mobile digital devices. iPod is a registered trademark and iPhone is a trademark of Apple, Inc. All rights reserved. The Bluetooth word mark is a registered trademark owned by Bluetooth SIG, Inc. and any use of such mark by Chevrolet is under license. Go to gm.com/bluetooth to find out which Bluetooth phones are compatible with the vehicle. ©2008 General Motors Corporation. All rights reserved.

Litho in USA.

July 2008



chevy.com/silverado

# SILVERADO & SILVERADO HD DIMENSIONS

## Regular Cab

**A** = 79.9"  
**B** = 79.9" (1500 and HD SRW),  
 95.9" (3500HD Big Dooley)  
**C** = 73.5" to 76.4"  
 (depending on model and  
 tire size selected)  
**D** = 119.0" Standard Box,  
 133.0" Long Box

**E** = 205.6" Standard Box,  
 224.5" Long Box (1500),  
 224.7" (HD)  
**F** = 50.6"  
**G** = 62.5"  
**H** = 116.5"  
**I** = 78.7" Standard Box,  
 97.8" Long Box



A



B



D

E



H

I

## Extended Cab

**A** = 79.9"  
**B** = 79.9" (1500 and HD SRW),  
 95.9" (3500HD Big Dooley)  
**C** = 73.6" to 76.8"  
 (depending on model and  
 tire size selected)  
**D** = 133.9" Short Box (1500),  
 143.5" Standard Box,  
 157.5" Long Box

**E** = 220.3" Short Box (1500),  
 229.9" Standard Box (1500),  
 230.3" Standard Box (HD),  
 248.8" Long Box (1500),  
 249.2" Long Box (HD)  
**F** = 50.6"  
**G** = 62.5"  
**H** = 141.4"  
**I** = 69.3" Short Box (1500),  
 78.7" Standard Box,  
 97.8" Long Box



A



B



D

E



H

I

## Crew Cab

**A** = 79.9"  
**B** = 79.9" (1500 and HD SRW),  
 95.9" (3500HD Big Dooley)  
**C** = 73.7" to 77.2"  
 (depending on model and  
 tire size selected)  
**D** = 143.5" Short Box (1500),  
 153.0" Standard Box (HD),  
 167.0" Long Box (HD)

**E** = 229.9" Short Box (1500),  
 239.9" Standard Box (HD),  
 258.7" Long Box (HD)  
**F** = 50.6"  
**G** = 62.5"  
**H** = 148.9" (1500),  
 150.9" (HD)  
**I** = 69.3" Short Box (1500),  
 78.7" Standard Box (HD),  
 97.8" Long Box (HD)



A



B



D

E



H

I

# E-Z SPECS: THE QUICK GUIDE TO SILVERADO AND SILVERADO HD FEATURES.

See pages 32-37 and 43 for complete availability and restrictions.

## WORK TRUCK (WT)

- Black front bumper (1500)
- Chrome front bumper (HD)
- Chrome rear step-bumper
- Daytime Running Lamps with Automatic Exterior Lamp Control
- Black, foldaway outside rearview mirrors
- Recovery hooks (HD and 4x4 models)
- Front disc/rear drum brakes with ABS (1500)
- Front and rear disc brakes with ABS (HD)
- Z83 Solid Smooth Ride suspension (1500)
- Z85 Handling/Trailer suspension (HD)
- Floor-mounted transfer case shifter (4x4 models only)
- Hydra-Matic four-speed automatic transmission with Tow/Haul mode (1500)
- Hydra-Matic six-speed automatic transmission with Tow/Haul mode (HD)
- 40/20/40 split-bench vinyl front seats
- Dual glove boxes
- Driver Information Center (DIC)
- OnStar with one-year Safe & Sound Plan<sup>1</sup>
- Dual covered 12-volt power outlets
- Tilt-Wheel adjustable steering column
- Power door locks (Crew Cab models)
- AM/FM stereo with MP3-compatible CD player
- XM Radio with three trial months<sup>2</sup>

## LS (1500 CREW CAB ONLY)

*In addition to or replacing WT equipment, LS includes:*

- Chrome front bumper
- Black, foldaway, power, heated outside rearview mirrors
- Body-color body-side moldings
- Z85 Handling/Trailer suspension
- StabiliTrak Electronic Stability Control System
- 40/20/40 split-bench cloth front seat with center armrest/storage
- Single-zone manual temperature control
- Power door locks with Remote Keyless Entry
- Power windows
- Cruise control

## LT

*In addition to or replacing LS equipment, LT includes:*

- Autotrac active transfer case (1500 4x4 models)
- Electronic transfer case (HD 4x4 models)
- 40/20/40 split-bench Premium Cloth front seat with center armrest and lockable underseat storage
- Foglamps
- StabiliTrak Electronic Stability Control System (1500 and 2500 Standard Box models)

## LTZ

*In addition to or replacing LT equipment, LTZ includes:*

- Body-color front bumper (1500)
- Body-color, power, heated outside rearview mirrors with driver-side auto-dimming feature, power-foldaway feature, turn-signal indicators and curb-tilt (not available with camper mirrors)
- Body-color door handles
- Automatic locking rear differential
- Auxiliary external transmission oil cooler
- Heavy-duty trailering equipment
- Remote vehicle starter system
- Reclining, heated, 10-way power-adjustable, Custom Leather-appointed front bucket seats with center console storage
- Dual-zone automatic temperature controls
- Bose® speaker system
- NEW Bluetooth® wireless technology for select compatible phones<sup>3</sup>
- Steering wheel-mounted audio controls
- Heated windshield washer fluid system



<sup>1</sup> OnStar services require vehicle electrical system (including battery), wireless service and GPS satellite signals to be available and operating for features to function properly. OnStar acts as a link to existing emergency service providers. Subscription Service Agreement required. Call 1-888-4ONSTAR (1-888-466-7827) or visit [onstar.com](http://onstar.com) for OnStar's Terms and Conditions, Privacy Policy and details and system limitations. <sup>2</sup> XM is available only in the 48 contiguous United States. Required \$12.95 monthly subscription sold separately after three trial months. All fees and programming subject to change. For more information, visit [gm.xmradio.com](http://gm.xmradio.com). <sup>3</sup> The Bluetooth word mark is a registered trademark owned by Bluetooth SIG, Inc. and any use of such mark by Chevrolet is under license. Go to [gm.com/bluetooth](http://gm.com/bluetooth) to find out which Bluetooth phones are compatible with the vehicle.

Please recycle where available ♻️

AN AMERICAN REVOLUTION 

[chevy.com/silverado](http://chevy.com/silverado) 