

# Monte Carlo



1979



# Monte Carlo

Take pride in your pleasure.

Monte Carlo is a car that pulls away from the crowd. One that gives you a sure sense of satisfaction and well-being. Style, for example. There's the crisp, timely, linear body that stands so distinctly against the horizon.

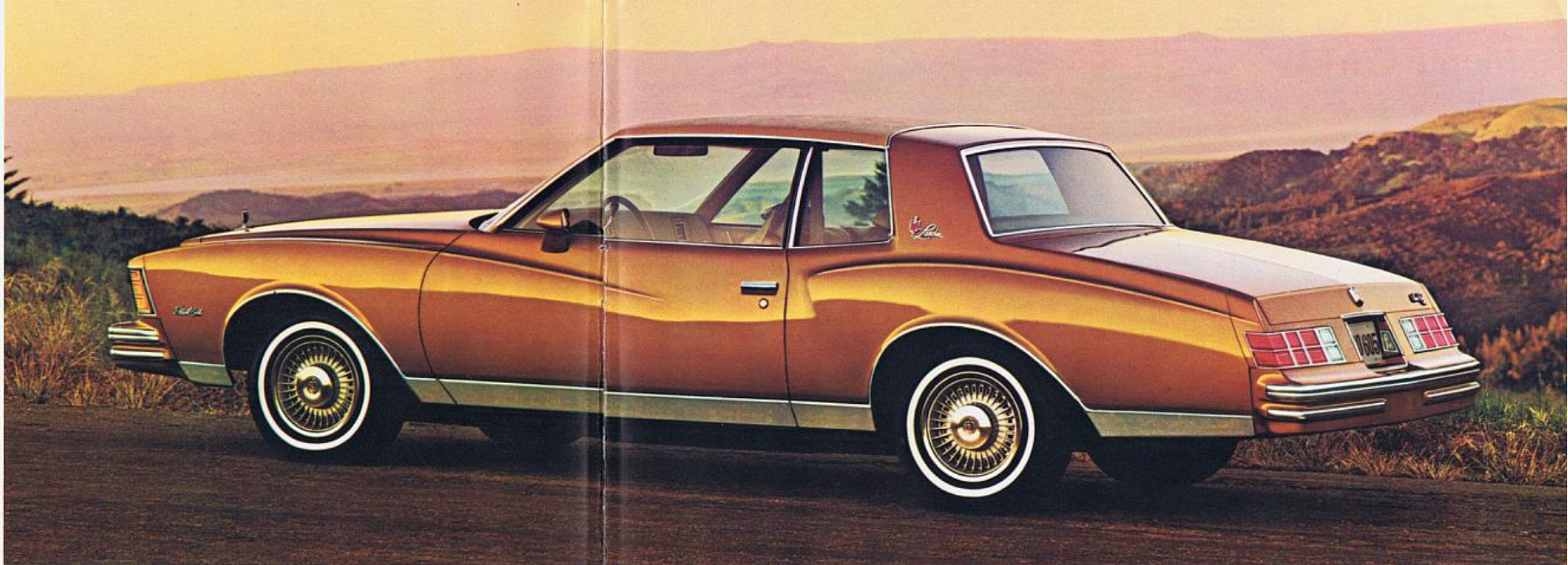
And there are special Monte Carlo design features available that can help give Monte Carlo an identity more precisely, more fulfillingly your own.

Monte Carlo Landau, for example. With an aristocratic arch of textured elk-grain padded vinyl that reaches over the entire front portion of the roof, Landau has a new design that complements and extends Monte Carlo's luxury look. To highlight the sculptured body lines, colour-keyed body side and rear pin striping, bright lower body sill mouldings with black-painted rocker panels, deluxe wheel covers and sport mirrors are included.

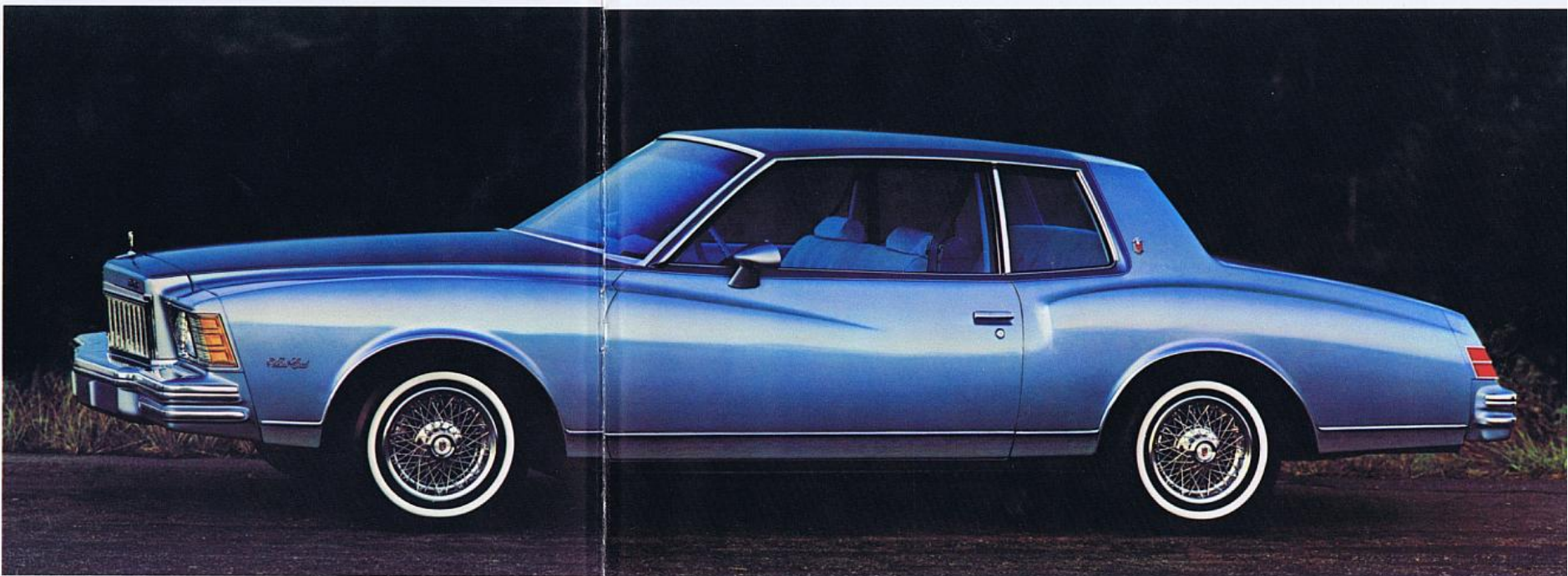
If your tastes run to the more untamed outdoor pleasures, there's Monte Carlo with removable tinted glass roof panels (shown on cover). Just unlatch the panels, store them in the trunk and you can feast on the wide-open enjoyments of fresh air and sunlight.

Or perhaps you would like a striking colour combination to accent Monte Carlo's advanced styling. Custom Two-Tone paint is available to do exactly that.

Whichever design feature you might choose, Monte Carlo's personality remains clear and unmistakable. And, after all, what more could you ask for?



Monte Carlo Landau Coupe shown in camel metallic with available white stripe tires.



Monte Carlo Coupe shown in available Custom Two-Tone light blue and medium blue metallic with

available sport mirrors, bright body sill mouldings, tinted glass, wire wheel covers and white stripe tires.





Monte Carlo Coupe shown in carmine metallic with available sport mirrors, body side pin striping, bright body sill mouldings and white stripe tires.

## Imagine yourself in a 1979 Monte Carlo

Monte Carlo has come to stand for a car that stands apart. A car with a look, a feel, a personality all its own. And the Monte Carlo interior is where that personality begins.

Picture an interior that enfolds you in placid quiet, massages your spirit with easeful luxury and delights your eye with custom-tailored decor.

It's your own personal "driver's suite." A thickly carpeted world of roomy, richly upholstered full-foam seats and such thoughtful touches as pull straps on the doors and a smart delta spoke steering wheel covered in soft vinyl.

Now daydream a moment about the Monte Carlo exterior. Clean, sculptured lines. The effortless sweep and flow of

curves from hood to taillights.

Next, turn the key. Imagine yourself taking off down the road. The sensation is precise. You've got front and rear stabilizer bars beneath you, teamed with steel-belted radial ply tires for a firm, ground-gripping feel.

Go ahead, imagine yourself in such a

### A word about this catalogue:

*We have tried to make this catalogue as comprehensive and factual as possible. And we hope you find it helpful. However, since the time of printing, some of the information you'll find here may have been updated. Your dealer has details of all significant changes and, before ordering, ask him to bring you up to date.*

**ALL '79 MONTE CARLOS ARE COVERED BY THE GENERAL MOTORS THREE YEAR PERFORATION FROM CORROSION WARRANTY.**

Shown on cover:

Monte Carlo Coupe shown in dark carmine metallic with available removable glass roof panels, sport mirrors, body side pin striping, side window sill mouldings, bright sill mouldings, power antenna, tinted glass, white stripe tires and Special Custom interior.



# Monte Carlo Interiors

The Monte Carlo interior is a virtual "driver's suite," with its beautifully tailored appointments and deeply cushioned upholstery.

Here's true interior luxury. Come on in. You'll find it quiet, spacious and refreshing.

Relax on full foam-cushioned seats. Look around. You'll see a one-piece-cloth, thickly padded "ceiling" overhead and lush one-piece carpeting under foot. It's quiet and comfortable here. And the smallest of details are beautifully crafted.

Select the Monte Carlo decor and colour combination that best satisfies your tastes and personality from the chart below.



Monte Carlo instrument panel with available air conditioning, AM radio, intermittent windshield wiper system and automatic transmission.

## INTERIOR AND EXTERIOR COLOUR COMBINATIONS

### INTERIOR COLOURS

BLACK BLUE CAMEL CARMINE GREEN OYSTER

#### MONTE CARLO INTERIOR

Available Special Custom Interior with 55/45 Split Seat and Special Custom Cloth		BLACK	BLUE	CAMEL	CARMINE	GREEN	OYSTER
<b>Bench Seat</b>	Cloth (Std.)	X	X	X	X	X	X
	Vinyl (Avail.)		X	X	X	X	X
<b>Bucket Seats</b>	Cloth (Avail.)	X	X	X	X	X	X
	Vinyl (Avail.)		X	X	X	X	X

### EXTERIOR COLOURS

#### CODE

	BEIGE	61	X		X	X	X
	BLACK	19	X	X	X	X	X
	BLUE, DARK (METALLIC)	29	X	X	X		X
	BLUE, LIGHT (METALLIC)	22	X	X			X
	BLUE, PASTEL	21	X	X			X
	BROWN, DARK (METALLIC)	69	X		X		X
	CAMEL (METALLIC)	63	X		X		X
	CARMINE (METALLIC)	77	X		X		X
	CARMINE, DARK (METALLIC)	79	X		X		X
	GREEN, LIGHT	40	X		X		X
	GREEN, MEDIUM (METALLIC)	44	X		X		X
	SILVER	15	X		X		X
	WHITE	11	X	X	X	X	X
	YELLOW, LIGHT	54	X	X			X

#### Custom Two-Tone colours available:

Int. Colours: Black, Blue or Oyster	Int. Colours: Black or Camel	Int. Colours: Black, Carmine or Oyster	Int. Colours: Black or Green	Int. Colours: Black, Carmine or Oyster	Int. Colours: Black, Carmine or Oyster

\*Not available on Landau.

#### Vinyl roof colours available:

Black, light blue, light green, white, beige, dark carmine, silver. Check your dealer for complete information on vinyl roofs available.



Available Special Custom interior with 55/45 split seat and centre armrest shown in oyster with available AM/FM stereo radio, air conditioning, sport mirror and automatic transmission.



Monte Carlo standard cloth interior shown in carmine with available Deluxe four-keyed seat and shoulder belts, power door locks, automatic transmission and sport mirror.



Available vinyl bucket seats shown in camel with available console, AM/FM radio, sport mirror and automatic transmission.



# Standard Features

**1. High Energy Ignition.** A solid-state system that eliminates points and ignition condenser, yet delivers a high voltage spark that helps extend time between recommended tune-ups.

**2. Delco Freedom battery.** Never needs refilling. Sealed side terminals help resist corrosion.

**3. Steel-belted radials.** The strength and durability of steel. Help provide less rolling resistance and good traction on wet and snowy roads.

**4. Front disc/rear drum brakes.** A self-adjusting system. Fade-resistant front disc brakes have audible wear sensors to let you know when to replace linings.

**5. Full carpeting.** One-piece wall-to-wall carpeting covers even under the front seats.

**6. Dual mode interior ventilation.** The heater fan forces outside air through upper vents into the passenger compartment while the car is standing still or moving at low speeds. At higher speeds, air is also ram inducted to the interior through lower vents.

**7. Full Coil suspension.** Features computer-selected springs to match specific model and equipment. Includes front and rear stabilizer bar.

**8. Acoustical headlining.** Polyfoam sound-deadening material is sandwiched between the fabric and the hardboard backing in this attractive one-piece ceiling.

**9. Body by Fisher.** Beautiful on the outside. Rugged underneath. Double panel doors and deck lid, box-section roof headers and pillars, heavily ribbed and formed underbody.

**10. Front and rear inner fenders.** Shield outer surfaces from stones, slush and road salt for added corrosion resistance.

**11. Spacious trunk.** 16.1 cubic feet of usable luggage capacity to accommodate a wide variety of items.

**12. Compact spare tire.** Provides more luggage space because the fully inflated tire stores vertically out of the way and takes up less space. Also lighter in weight than a conventional tire and more convenient to handle.

**13. Extensive anti-corrosion treatments.** Include use of zinc-rich pre-coated metal, special primers and sealers in strategic areas and oil-base coatings on the frame and lower body.

**14. Coolant recovery system.** Helps prevent coolant loss.

**15. Cushioned body mounting system.** Helps isolate passenger area from road noise and vibration.

## More standards

- Delcotron generator with built-in solid-state regulator
- Full-perimeter frame
- Visible ball joint wear indicators on front suspension lower control arms
- Early fuel evaporation systems on all engines
- Forward mounted recirculating ball steering gear and linkage
- Concealed dual-speed electric windshield wipers
- Moulded full foam seat construction
- Electric clock
- Glove compartment lock and light
- Column-mounted lever for turn signal and headlight dimmer
- Ashtray light
- Acrylic finish
- Dual horns
- Bright wheel opening mouldings
- Bright roof drip mouldings.

## DIMENSIONS in millimetres (inches)

EXTERIOR	Monte Carlo	
Wheelbase	2745	(108.1)
Length (overall)	5090	(200.4)
Width (overall)	1816	( 71.5)
Height (loaded)	1370	( 53.9)
Tread-Front	1486	( 58.5)
Tread-Rear	1467	( 57.8)
INTERIOR		
Head Room-Front	965	( 37.6)
Head Room-Rear	961	( 37.8)
Leg Room-Front	1086	( 42.8)
Leg Room-Rear	923	( 36.3)
Hip Room-Front	1311	( 51.6)
Hip Room-Rear	1394	( 54.9)
Shoulder Room-Front	1402	( 55.2)
Shoulder Room-Rear	1419	( 55.9)
Usable Luggage Capacity (litres/cu. ft.)	456	(16.1)

## A word about engines

The Chevrolets shown in this catalogue are equipped with GM-built engines produced by various divisions. Please refer to the Monte Carlo Power Teams chart shown on this page.

## ENGINE SELECTION

An opportunity for you to even further personalize you Monte Carlo by choosing the engine with the characteristics that are best matched to your driving needs.

## 3.3 Litre (200 Cu. In.) and 3.8 Litre (231 Cu. In.) V6 Engines

Both these engines have a blend of six-cylinder and V8 design characteristics. Both engine blocks and heads are cast iron. The 3.3 Litre V6 has a crankshaft with slightly offset rod journals to help assure a firing interval with a high degree of smoothness and good dynamic balance.

## 4.4 Litre V8 (267 Cu. In.) Engine

New for '79, this available V8 includes short-stroke valve-in-head design and Dualjet carburetor which help provide good engine performance at all speed ranges. Also features a cast iron cylinder block with full jacket cylinder cooling, a precision-balanced, cast nodular iron crankshaft, hydraulic valve lifters and exhaust valve rotators.

## 5.0 Litre V8 (305 Cu. In.) Engine

Short-stroke valve-in-head design newly equipped with a 4-barrel carburetor for increased power output, which helps provide good engine performance at all speed ranges. There are also full jacket cylinder cooling, a precision-balanced crankshaft and hydraulic valve lifters. Included is a new trapped vacuum spark control system for improved driveability.

## MONTE CARLO POWER TEAMS

Engine	V.I.N. Engine Code*	Ordering Code	Displacement (cubic inches)	Engine Availability	Transmission Availability	
					Three-Speed Manual (1)	Automatic (2)
3.3 Litre 2-Bbl. V6 (A)	M	L26	200	Std.	Std.	EC (3)
3.8 Litre 2-Bbl. V6 (C)	A	LD5	231	EC	NA	EC (3)
4.4 Litre 2-Bbl. V8 (A)	J	L39	267	EC	NA	EC (3)
5.0 Litre 4-Bbl. V8 (B)	H	LG4	305	EC	NA	EC (3)

\*V.I.N. (Vehicle Identification Number) Engine Code is the fifth entry (letter or numeral) from the left on the vehicle serial number plate. The vehicle serial number plate is located on the top portion of the driver's side of the instrument panel and can be viewed from the exterior of the car by looking through the windshield.

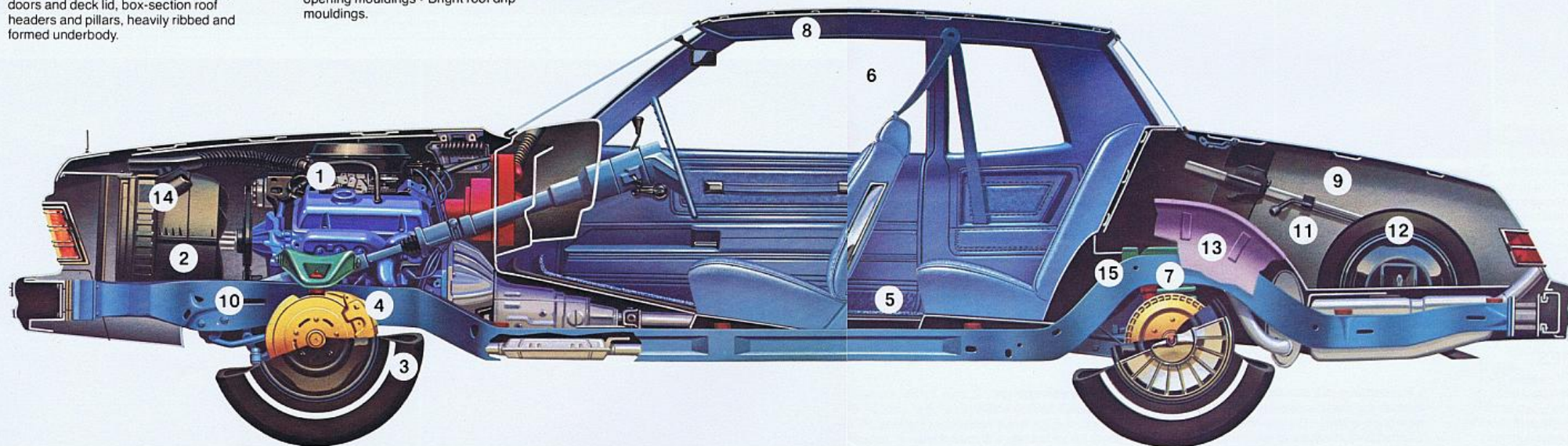
- Std.—Standard. NA—Not Available. EC—Available at extra cost.  
 (1) Not available on Monte Carlo Landau; includes floor-mounted shift control.  
 (2) Standard on Monte Carlo Landau.  
 (3) Power Steering (RPO N41) and Power Brakes (RPO J50) required on Sport Coupe.

- (A) Produced by GM—Chevrolet Motor Division, Tonawanda, New York Engine Plant.  
 (B) Produced by GM—Chevrolet Motor Division, Flint, Michigan; Tonawanda, New York and GM of Canada, St. Catharines.  
 (C) Produced by GM—Buick Motor Division, Flint, Michigan Engine Plant.

## LONG RECOMMENDED SERVICE INTERVALS

(Under normal driving conditions)

Engine Oil	12 months or 12,000 kilometres (7,500 miles)
Oil Filter	12 months or 12,000 kilometres (7,500 miles); every 24,000 kilometres (15,000 miles) thereafter
Carburetor Air Filter (replacement element type)	Up to 80,000 kilometres (50,000 miles)
Spark Plugs	Up to 36,000 kilometres (22,500 miles)
Chassis Lubrication	12 months or 12,000 kilometres (7,500 miles)
Automatic Transmission Fluid Change	Every 96,000 kilometres (60,000 miles)





# Available Options

BE SURE TO TALK TO YOUR DEALER ABOUT THE AVAILABILITY OF OUR MECHANICAL AND ELECTRICAL REPAIR PROTECTION OPTION FOR YOUR VEHICLE.

**A word about assembly, components and optional equipment in these vehicles.**

The vehicles described in this brochure are assembled at facilities of General Motors of Canada Limited or car Divisions of General Motors Corporation or at facilities of General Motors Corporation operated by the G.M. Assembly Division. These vehicles incorporate thousands of different components produced by General Motors of Canada Limited and by various suppliers to General Motors of Canada Limited or related Companies. From time to time during the manufacturing process, it may be necessary, in order to meet public demand for particular vehicles or equipment, or to meet federally mandated emission and safety requirements or fuel economy guidelines, or for other reasons, to produce vehicles with different components or differently sourced components than initially scheduled. All such components have been approved for use in our products by General Motors of Canada Limited or related companies and will provide the quality performance associated with our name.

With respect to extra cost optional equipment, make certain you specify the type of equipment you desire on your vehicle when ordering it from your dealer. Some options may be unavailable when your car is built. Your dealer receives advice regarding current availability of options. You may ask the dealer for this information. GM also requests the dealer to advise you if an option you ordered is unavailable. We suggest you verify that your car includes the optional equipment you ordered or, if there are changes, that they are acceptable to you.

All illustrations and specifications contained in this catalogue are based on the latest product information available at time of publication approval. The right is reserved to make changes at any time, without notice, in prices, colours, materials, equipment, specifications and models, and to discontinue models. Some of the equipment shown or described throughout this catalogue is available at extra cost. Check with your dealer for complete information.

**1. Power Sky Roof.** Opens at the touch of a button to let in sunlight, moonlight and outside air. (Reduces head room slightly.)



**4. Power door lock system.** Controls on each front door allow driver or passenger to lock or unlock both doors automatically and instantly.



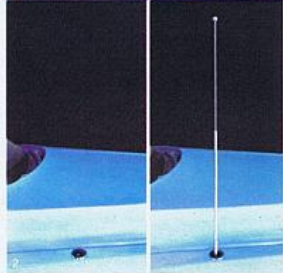
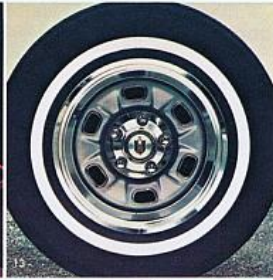
**7. Comfortilt steering wheel.** Adjusts to six different positions for most comfortable driving angle.



**10. Electric rear window defogger.** Electric grid type helps keep rear window clear of mist and ice.



**13. Rally wheels.** Colour-keyed to body colour (not available on Landau).



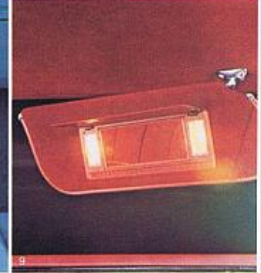
**2. Power radio antenna.** Antenna automatically extends to its full height above fender when radio is turned on. Automatically lowers when radio or ignition is turned off.



**3. Intermittent windshield wiper system.** Vary the wipe cycle from 1/2 second to 20 seconds to adjust for light drizzle or mist.



**5. Power windows.** Raise or lower windows at a touch of a button.



**8. Power trunk opener.** Touch the release button located inside the glove box and the trunk lid opens.

**9. Illuminated RH visor mirror.** Mounted on the right-hand visor. Just lift up vinyl flap and there's illumination for nighttime freshening up.



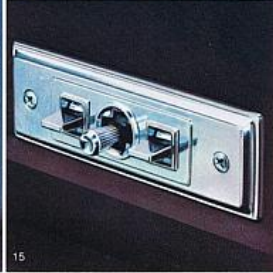
**1. Air conditioning.** Cooling, heating and defogging in one easily operated unit.

**2. Sound systems.** Produced by Delco to General Motors and Chevrolet quality standards. Select from new systems: AM/FM Citizens Band radio with power antenna; AM/FM stereo/citizens Band radio with

power antenna; AM/FM stereo radio with stereo cassette tape and AM/FM stereo radio with digital clock display. See back cover for complete list of sound systems available.



**14. Twin remote sport mirrors.** Sporty-looking mirror casings. Right- and left-hand mirrors adjust from inside.



**15. Power seat.** 6-way control for power front seat. Note: Not available with bucket seats. Driver's side only with 55/45 split seat.

For a more complete list of available options, see back page of this catalogue.

## SAFETY FEATURES

### OCCUPANT PROTECTION

Seat belts with pushbutton buckles for all passenger positions • Two front combination seat and inertia reel shoulder belts for driver (with reminder light and buzzer) and right front passenger • Energy-absorbing steering column

• Passenger guard door locks • Safety door latches and stamped steel hinges • Folding seat back latches • Energy-absorbing padded instrument panel and front seat back tops • Contoured windshield header • Laminated windshield • Safety armrests

• Safety steering wheel.

**ACCIDENT AVOIDANCE**

Side marker lights and reflectors • Parking lamps that illuminate with headlamps • Four-way hazard warning flasher • Backup lights • Lane change feature in

direction signal control • Windshield defrosters, washer and dual speed wipers • Wide view inside mirror (vinyl edged, hatter resistant glass and deflecting support) • Outside rearview mirror • Dual master cylinder brake system with warning

light • Starter safety switch • Dual action safety hood latches.

**ANTI-THEFT**

Anti-theft ignition key reminder buzzer • Anti-theft steering column lock.



# Reasons to buy Monte Carlo

- Distinctive, elegant styling in a personal luxury car.
- Luxurious interior comfort and convenience.
- Road-tuned suspension for responsive ride.
- Full selection of spirited V6 or available V8 power.
- Quality engineered and designed for value.
  - Extensive application of acoustical materials.
  - Generous use of anti-corrosion materials and processes.
  - Rugged full-frame construction with 14 isolating body mounts.

## BUILD YOUR OWN MONTE CARLO (See your dealer for current ordering information.)

### MODELS

- Monte Carlo Coupe  Monte Carlo Landau Coupe

### COLORS (See chart on page 6 for colour combinations.)

Exterior colour \_\_\_\_\_ Second colour (if Custom Two-Tone) \_\_\_\_\_ Vinyl roof colour \_\_\_\_\_  
 Interior colour \_\_\_\_\_

### ENGINES (See chart on page 9 for engine/transmission availability.)

- 3.3 Litre 2-Bbl. V6 (200 Cu. In.) — Std.  3.8 Litre 2-Bbl. V6 (231 Cu. In.) — Avail.  5.0 Litre 4-Bbl. V8 (305 Cu. In.) — Avail.  
 4.4 Litre 2-Bbl. V8 (267 Cu. In.) — Avail.

### TRANSMISSIONS

- Three-Speed Manual  Automatic<sup>†</sup>

### AVAILABLE OPTIONS

- Air conditioning.
- Power windows.
- Power steering.<sup>†</sup>
- Power brakes.<sup>†</sup>
- Comfortilt steering wheel.
- Console.
- Automatic Speed Control.
- Power door lock system.
- Electric rear window defogger.
- Tinted glass.
- Removable glass roof panels (not available on Landau or with full vinyl roof).
- Auxiliary lighting.
- Deluxe luggage compartment trim.
- Dome reading light.
- Special Instrumentation (includes tachometer, voltmeter, temperature and oil pressure gauges).
- Gauge Package (includes temperature, voltmeter and oil pressure gauges).
- Intermittent windshield wiper system.
- Colour-keyed floor mats, front and rear.
- Deluxe colour-keyed seat and shoulder belts.
- Vinyl roof cover.<sup>†</sup>
- Body side pin striping.<sup>†</sup>

### MOULDINGS

- Deluxe body side mouldings.
- Door edge guards.

- Side window sill mouldings.
- Bright body sill mouldings.<sup>†</sup>

### SOUND EQUIPMENT

- AM radio.
- AM/FM radio.
- AM/FM/Citizens Band radio with power antenna.
- AM/FM stereo/Citizens Band radio with power antenna.
- AM/FM stereo radio.
- AM/FM radio with 8-track stereo tape.
- AM/FM stereo radio with stereo cassette tape.
- AM/FM stereo radio with 8-track stereo tape.
- Rear seat speaker.
- Dual front speakers.
- Power antenna.

### SEATING

- Special Custom interior with 55/45 seat.
- Six-way power seat.
- Bucket seats.

### WHEELS AND WHEEL COVERS

- Colour-keyed rally wheels (not available on Landau).
- Wire wheel covers.

<sup>†</sup>Standard on Monte Carlo Landau.

### SPECIAL SUSPENSION

- Heavy-duty front & rear suspension.

### TIRES

- P205/70R-14B steel-belted radial ply white stripe tires.

### MIRRORS

- Remote control outside rearview mirror, LH.
- Sport mirrors, LH remote control and RH manual.<sup>†</sup>
- Twin remote control sport mirrors.
- RH visor mirror.<sup>†</sup>
- Illuminated RH visor mirror.

### MISCELLANEOUS

- Heavy-duty radiator.
- Performance axle ratio.
- Limited slip differential.
- Heavy-duty battery.
- Litter container.
- 63 and 80-amp Delcotron generators.
- Power trunk opener.
- Power Sky Roof.

