

2010 BUICK ENCLAVE



TAKE A LOOK AT ME NOW.

THERE'S NEVER BEEN ANYTHING LIKE IT. REDEFINING NOT ONLY HOW A LUXURY CROSSOVER LOOKS AND PERFORMS—BUT BUICK AS WELL. FOR 2010, **BUICK ENCLAVE** CONTINUES THAT POSITION OF UNIQUENESS. PROVING WHY IT'S THE FINEST LUXURY CROSSOVER EVER.

02 DESIGN
06 TECHNOLOGY
08 INTERIOR
14 PERFORMANCE
16 HANDLING/SAFETY
18 STANDARD FEATURES & OPTIONS
20 ACCESSORIES

Some photos shown in this catalog may contain optional equipment.



Curves sweep from one end of Enclave to the other. From wraparound headlamps, signature chrome portholes and waterfall grille, the sculpted design flows undisturbed into the three-dimensional, multi-lens taillamps. They're all part of the Buick design philosophy.

Why, even the wheels, positioned nearly flush to the outer wells for stability, provide a solid athletic appearance. No matter which way you look, Enclave strikes an uncommon pose.

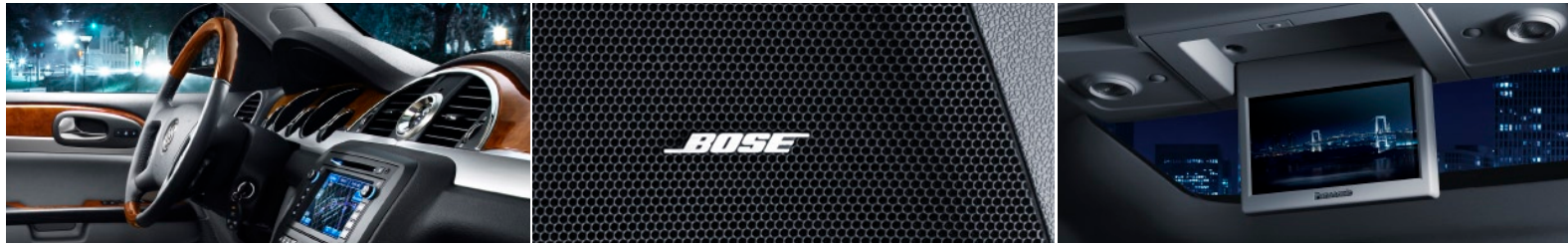
AHEAD OF THE CURVES.

DESIGN



STARTING LINES. FINELY SCULPTED, PROVIDING A PICTURESQUE FRAME FOR ITS AVAILABLE 20-INCH¹ ALUMINUM WHEELS.





YES, WE THOUGHT OF THAT TOO. IN ENCLAVE, AVAILABLE TECHNOLOGIES ABOUND. TO HELP GUIDE YOU, THE VOICE- AND TOUCH-SCREEN-ACTIVATED DVD NAVIGATION SYSTEM OFFERS NEARLY 7 MILLION MILES OF NORTH AMERICAN ROADS. AND TO NAVIGATE THOSE ROADS, XM NAVTRAFFIC¹ INCORPORATES REAL-TIME TRAFFIC CONDITIONS INTO YOUR NAV SCREEN, DIRECTING YOU AROUND TROUBLE SPOTS AND TOWARD THE MOST EFFICIENT ROUTE. TO MAKE THAT RIDE EVEN MORE ENTERTAINING, THERE'S A BOSE® 10-SPEAKER SURROUND SOUND SYSTEM WITH 5.1 DECODING AND A USB PORT TO SYNC AND POWER YOUR IPOD® WHILE REAR-SEAT PASSENGERS CAN ENJOY THE OVERHEAD DVD ENTERTAINMENT SYSTEM COMPLETE WITH 8-INCH SCREEN AND TWO PAIRS OF WIRELESS HEADPHONES.



ENCLAVE'S GREATEST INNOVATION IS CONVENIENCE, WITH BLUETOOTH®² CONNECTIVITY OFFERING THE EASE OF HANDS-FREE CALLING. AND LOOK NO FURTHER THAN THE REARVIEW MIRROR FOR THE BACKUP CAMERA'S DISPLAY. EVEN STARTING ENCLAVE AND USING ITS POWER REAR LIFTGATE FROM NEARLY 200 FEET AWAY IS EASY WITH THE REMOTE KEY FOB. YOU'LL ALSO BE A TOUCH AWAY FROM ONSTAR³—STANDARD FOR ONE YEAR. VOICE-GUIDED TURN-BY-TURN NAVIGATION,⁴ THE SIMPLEST AND SMARTEST IN-VEHICLE NAV SYSTEM, LEADS THE WAY. CHOOSE THE PREVIOUSLY MENTIONED NAV SYSTEM, AND DESTINATION DOWNLOAD⁵ SENDS DIRECTIONS TO YOUR SCREEN WITHOUT PULLING OVER AND ENTERING ANYTHING. OR USE ENAV⁶ TO FIND A DESTINATION AT MAPQUEST® AND HAVE IT SENT TO ENCLAVE'S ONSTAR SYSTEM.



¹Required XM Radio and XM NavTraffic monthly subscriptions sold separately by XM after trial period. XM NavTraffic only available in select markets. Certain real-time traffic data provided by NAVTEQ, ©2009 NAVTEQ. For more information, visit xmradio.com/navtraffic. ²Go to gm.com/bluetooth to find out which Bluetooth phones are compatible with

the vehicle. ³Call 1-888-4ONSTAR (466-7827) or visit onstar.com for details and system limitations. ⁴Turn-by-Turn not available in certain areas. Visit onstar.com for coverage map. ⁵Requires compatible navigation system. ⁶Requires Directions & Connections plan. Not available in certain areas. Visit onstar.com for coverage map.



IN THE DRIVER'S SEAT. BEYOND ITS WARM CAMPHOR WOOD TONES, BRUSHED ALUMINUM AND ART-DECO-INSPIRED ANALOG QUARTZ CLOCK, ENCLAVE'S DRIVER SEAT IS COMMAND CENTRAL. RESPONDING TO YOU FROM ITS GENUINE MAHOGANY-INLAID STEERING WHEEL—PLACING BUTTONS FOR CRUISE CONTROL, SPEAKER VOLUME AND BLUETOOTH¹ AT YOUR FINGERTIPS.

Inside Enclave, highly crafted, premium materials like chrome-accented door handles greet you immediately.

Take a seat and enjoy the results of 1,400 hours of real-world evaluation. All seats feature cushioning and bolsters that seem to shorten any trip. French seams highlight available leather seating surfaces infused with silk and perforated to breathe. The driver and front-passenger seats may be heated and cooled, with the driver's power adjustable up to eight directions, including lumbar, when you choose these options.

Illuminating all of these comforts are an available power sunroof and companion 3-ft. by 4-ft. skylight. The sunroof tilts up or slides open while both offer a convenient sunshade.





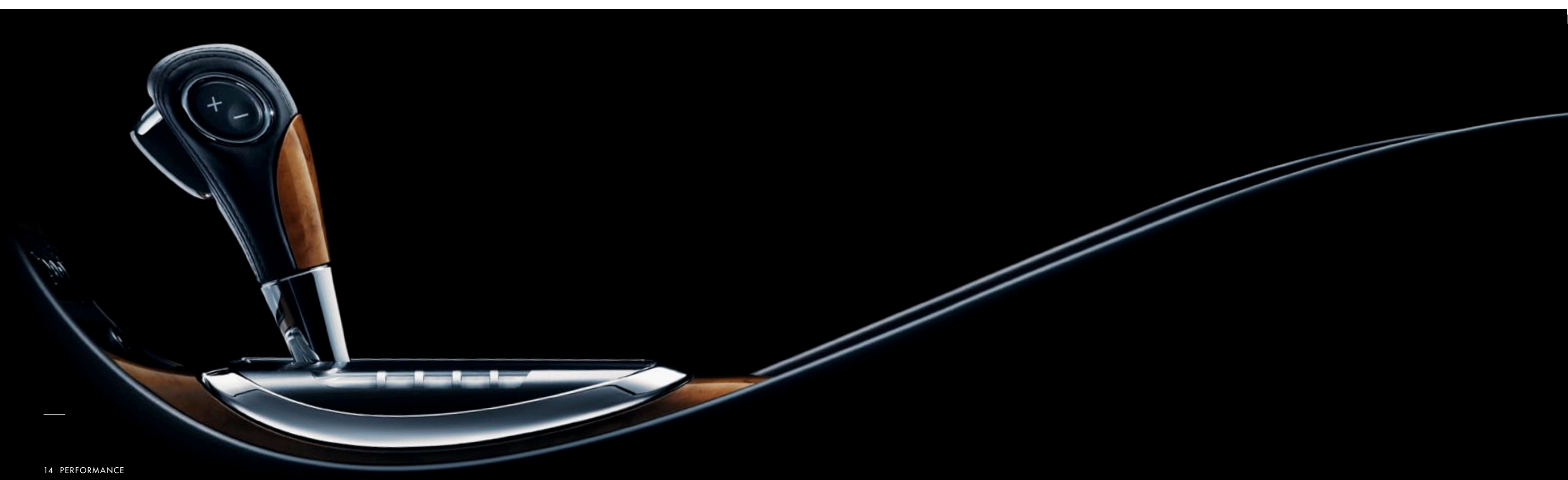
A HUSH FALLS OVER THE CROWD. THE ROAD SHOULD BE SEEN BUT CERTAINLY NOT HEARD. BUICK'S PIONEERED QUIETTUNING PROCESS REDUCES, BLOCKS AND ABSORBS NOISE AND VIBRATION. TO HELP KEEP OUTSIDE NOISES OUTSIDE, ENCLAVE BOASTS AN ACOUSTIC LAMINATED WINDSHIELD AND FRONT DOOR GLASS AND TRIPLE DOOR SEALS. THIS MAKES ENCLAVE QUIETER THAN A LEXUS RX 350.¹ TO ENJOY THIS SOLITUDE, THREE ROWS OF FIRST-CLASS SEATING COMFORTABLY GIVE ENCLAVE ROOM FOR UP TO EIGHT—SOMETHING NOT FOUND ON ANY LUXURY CROSSOVER. AND DESIGNING ENCLAVE WITH A THIRD ROW FROM THE OUTSET

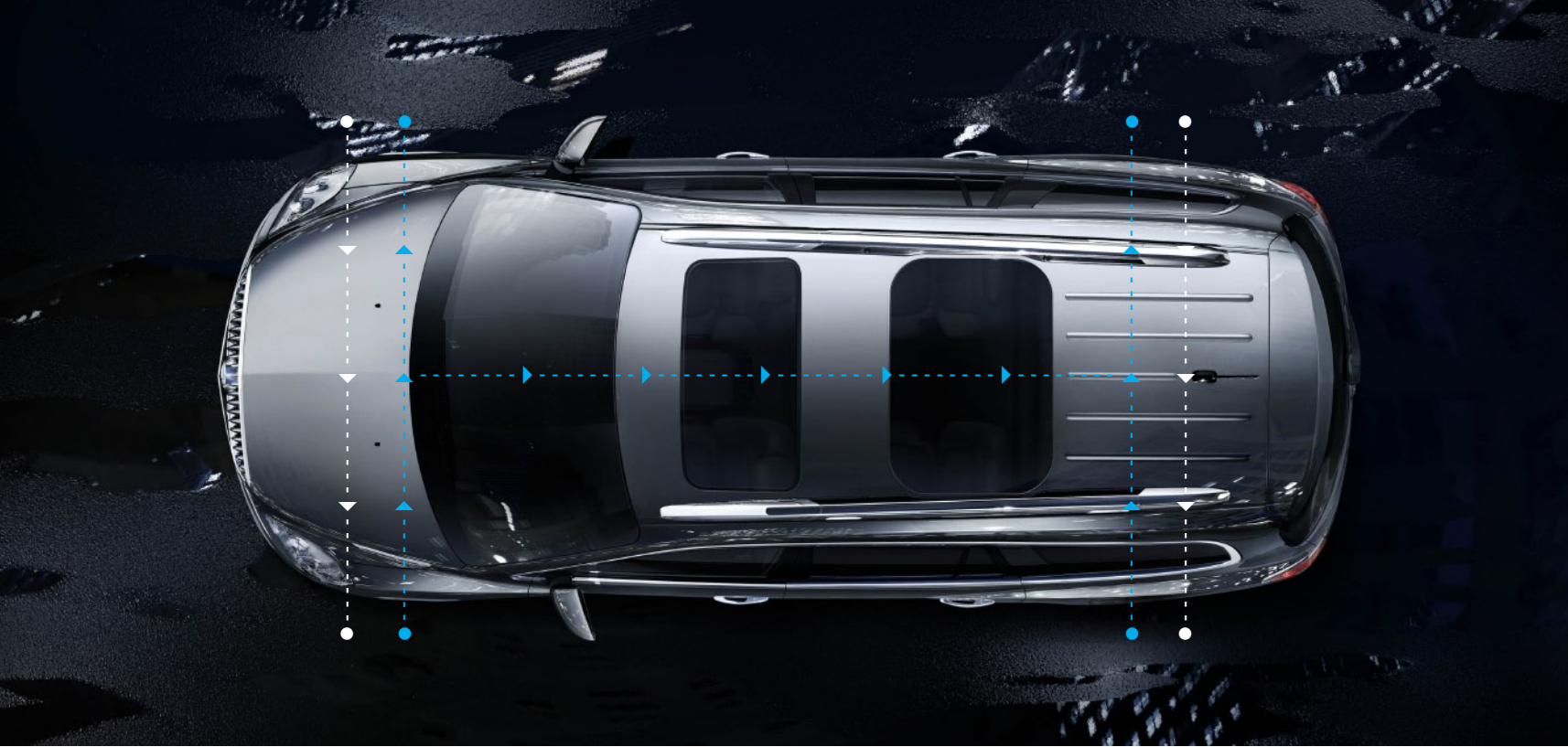
DRAMATICALLY INCREASES ITS ACCESSIBILITY AND VERSATILITY. AS DOES SMARTSLIDE, WHICH MAKES GETTING TO THE THIRD ROW EASY THANKS TO AN INGENUOUS ARRAY OF PIVOT POINTS IN THE SECOND-ROW SEATS—CUSHIONS FLIP UP WHILE THE SEATBACK SLIDES FORWARD FOR ONE-HANDED OPERATION. PLENTY OF STORAGE ROOM COMES ALONG FOR THE RIDE. THE SECOND- AND THIRD-ROW SEATS FOLD DOWN, FREEING UP 115 CUBIC FEET OF CARGO SPACE.² WITH ITS THIRD ROW FOLDED DOWN, 65.9 CUBIC FEET ARE CREATED²; 23.3 CUBIC FEET EXIST BEHIND THE THIRD ROW.² THERE'S EVEN A HANDY AVAILABLE 115-VOLT OUTLET TO POWER YOUR OUTINGS. THE CROWD APPLAUDS.

PERFORMING ARTIST. From its initial design, right down to its intricately tuned mechanics, this 6-speed automatic transmission is one half of Enclave's high-tech powertrain. The other is a 288-hp 3.6L VVT V-6 engine with direct fuel injection. Together, they maximize performance and efficiency, producing better highway fuel economy than any other eight-passenger crossover or SUV!

The gearbox was specifically engineered for Enclave's front-wheel- and all-wheel-drive applications. It's so sophisticated, a 32-bit control module monitors its operation and compensates for normal wear in components such as clutch plates so performance remains consistent for the life of the transmission.

Because it's a Buick, Enclave is backed by a comprehensive 4-year/50,000-mile Bumper-to-Bumper Limited Warranty.² Add to that a transferable 5-year/100,000-mile Powertrain Limited Warranty² plus 24/7 Roadside Assistance and Courtesy Transportation. Now you've got the best coverage in America.





STAY IN TOUCH. Make a lasting connection with the road. For most climates and driving conditions, Enclave's front-wheel drive presents a capable solution. Should the road or the environment call for more traction, the available on-demand all-wheel-drive system doesn't ask you to push buttons. It constantly monitors traction at all four wheels, delivering power to the wheels with the best grip by working in tandem with anti-lock brakes and StabiliTrak's electronic stability control system with rollover mitigation. Its four-wheel independent suspension provides a premium ride with stable cornering.

To help navigate safely, optional articulating high-intensity discharge xenon headlamps extend your vision to see around curves and beyond corners. And available Ultrasonic Rear Parking Assist alerts you to objects while in reverse with audible cues. Speaking of safety, Enclave has earned an impressive five-star crash rating for both front and side impacts.¹

And to help your Enclave live up to its performance promise, Goodwrench service—found exclusively at your Buick dealer—is there. With all the technology in Enclave, GM-trained Goodwrench technicians have the expertise to care for all of it.




¹Five-star rating is for the driver and front passenger seating positions in the frontal crash test and for the front and rear seating positions in the side-impact crash test. Side-impact crash-test rating is for a model tested with standard head curtain Side-impact Air Bags (SABs). Government star ratings are part of the National Highway Traffic Safety Administration's (NHTSA's) New Car Assessment Program (safercar.gov).

	CX	CXL 1	CXL 2
POWER AND PERFORMANCE			
DRIVETRAIN Front-Wheel Drive (FWD)	S	S	S
All-Wheel Drive (AWD)	A	A	A
ENGINE 3.6L Variable Valve Timing (VVT) V-6 direct injection	S	S	S
TRANSMISSION 6-speed automatic, electronically controlled with automatic shift grade logic, 3.16 axle ratio	S	S	S
SUSPENSION Premium ride, 4-wheel independent	S	S	S
STEERING Power, variable effort	S	S	S
BRAKES 4-wheel anti-lock, 4-wheel disc	S	S	S
TRACTION CONTROL Full-range	S	S	S
STABILITRAK Stability control system with rollover mitigation	S	S	S
EXHAUST Dual with bright chromed tips	S	S	S
ENGINE BLOCK HEATER	A	A	A
COMFORT AND CONVENIENCE			
SEAT TRIM Deluxe cloth	S	—	—
Leather seating surfaces with perforated inserts	—	S	S
SEATING 6-way power driver seat adjuster with manual recline and lumbar control	S	—	—
Front passenger 2-way power (fore/aft) seat adjuster with manual recline and lumbar	S	—	—
8-way power driver seat adjuster with power recline and lumbar control and memory	—	S	S
4-way power front passenger seat adjuster with power recline and lumbar control	—	S	S
7-passenger seating, includes second-row captain's chairs, flat-folding and SmartSlide access to the third row and third-row flat-folding 60/40 split bench	S	S	S
8-passenger seating, includes second-row 60/40 bench, flat-folding and SmartSlide access to the third row and third-row flat-folding 60/40 split bench	A	A	A
Heated driver and front passenger seats	—	S	—
Heated and cooled driver and front passenger seats	—	—	S
Memory presets for 2 drivers, with 8-way power driver seat, includes easy-exit driver seat, power outside mirrors and power tilt and telescopic steering column (if equipped)	—	S	S
CONSOLE Second-row center, includes armrest, cupholders, storage and 12-volt power outlet. Not available with 8-passenger seating.	—	A	A
INSTRUMENTATION Includes Driver Information Center, tachometer, speedometer, fuel, coolant temperature, battery, gear selector, outside air temperature and compass display and engine oil life monitor	S	S	S
STEERING WHEEL Leather-wrapped with mahogany wood accents	S	S	S
Steering-wheel-mounted controls for audio and cruise control	S	S	S
Tilt and telescopic steering column	S	S	—
Power tilt and telescopic	—	—	S
CRUISE CONTROL	S	S	S
MIRROR Inside rearview, auto-dimming	S	S	S
REAR PARKING ASSIST Ultrasonic with audible warning	A ¹	S	S
REMOTE VEHICLE STARTER SYSTEM	A ¹	S	S
BLUETOOTH®² Cell-phone connectivity to vehicle audio system	S	S	S
POWER OUTLET Three-prong household style, 115-volt	A ¹	A ¹	S

	CX	CXL 1	CXL 2
REARVIEW CAMERA SYSTEM Integrated into rearview mirror. Integrated into DVD-based navigation display if (UUM) audio system with touch-screen navigation or (U4H) audio system with rear-seat entertainment and navigation are ordered on CXL 1 and CXL 2 models.			
VISORS Driver and front passenger illuminated vanity mirrors	S	S	S
CLIMATE CONTROL Air conditioning, tri-zone automatic, with individual climate settings for driver, front passenger and rear-seat occupants	S	S	S
Defogger, rear-window electric	S	S	S
WINDOWS Power with driver express-up and -down features and passenger express-down	S	S	S
SUNROOF Power, tilt-sliding with companion fixed-glass skylight and manual sunshade	—	A	A
QUIETTUNING Buick-pioneered process to reduce, block and absorb noise and vibration to create a quiet interior cabin	S	S	S
ENTERTAINMENT SYSTEMS			
(US8) AM/FM/XM ³ stereo with CD player and MP3 playback, speed-compensated volume, Radio Data System (RDS) ⁴ , TheftLock, auxiliary input jack that enables plug/play connection of all auxiliary audio players and 6 speakers	S	S	—
(PCU) Bose® sound system with single-disc CD player with MP3 playback. Includes Advanced Bose 10-speaker system, AM/FM/XM ³ stereo, auxiliary audio jack that enables plug/play connection of all auxiliary audio players, speed-compensated volume, TheftLock and rear audio controls with 2 headphone jacks (headphones not included). 115-volt inverter and USB port included.	A	A	S
(UUJ) Audio system with rear-seat entertainment, AM/FM/XM ³ stereo CD player, MP3 playback and Advanced Bose 10-speaker 5.1 Surround Sound DVD Entertainment System, auxiliary audio jack that enables plug/play connection of all auxiliary audio players, speed-compensated volume, TheftLock and RDS. ⁴ DVD Entertainment System includes 8" screen, rear audio controls with 2 headphone jacks and 2 wireless headphones. 115-volt inverter and USB port included.	—	A	A
(UUM) Audio system with DVD-based touch-screen navigation, AM/FM/XM ³ stereo CD player, MP3 playback, Advanced Bose 10-speaker system and DVD-based touch-screen navigation system with rearview camera. Includes auxiliary audio jack that enables plug/play connection of all auxiliary audio players, speed-compensated volume, TheftLock, RDS ⁴ and rear audio controls with 2 headphone jacks (headphones not included). 115-volt inverter and USB port included.	—	A	A
(U4H) Audio system with rear-seat entertainment and DVD-based touch-screen navigation, AM/FM/XM ³ stereo, Advanced Bose 10-speaker 5.1 Surround Sound DVD Entertainment System and DVD-based touch-screen navigation system with rearview camera. Includes auxiliary audio jack that enables plug/play connection of all auxiliary audio players, speed-compensated volume, TheftLock and RDS. ⁴ DVD entertainment system includes 8" screen, rear audio controls with 2 headphone jacks and 2 wireless headphones. 115-volt inverter and USB port included.	—	A	A
XM RADIO³ Includes 3 trial months of service. For more information, visit gm.xmradio.com.	S	S	S
XM NAVTRAFFIC⁵ Satellite-delivered traffic information service that enhances a GPS navigation system with the ability to show real-time traffic data. With XM NavTraffic, you will see traffic-impacting incidents such as construction, road closures, accidents and disabled vehicles. In select markets, you will also see average traffic speed and estimated travel time along the chosen route.	—	A ¹	A ¹
USB PORT Connectivity for various digital media	A ¹	A ¹	S

	CX	CXL 1	CXL 2
SAFETY AND SECURITY			
AIR BAGS⁶ Dual-stage frontal and side-impact driver and right-front passenger	S	S	S
Side curtain for first-, second- and third-row outboard passengers ⁶ with Passenger Sensing System and rollover protection	S	S	S
POWER DOOR LOCKS Programmable with rear child security	S	S	S
ONSTAR⁷ One year of Directions & Connections plan. Includes Turn-by-Turn Navigation, ⁸ Automatic Crash Notification, Automatic Notification of Air Bag Deployment, Stolen Vehicle Assistance, ⁹ a link to all Emergency Services, Roadside Assistance (roadside service provided by Cross Country), Remote Door Unlock, ⁹ OnStar Vehicle Diagnostics, ¹⁰ Hands-Free Calling, ¹¹ AccidentAssist, Remote Horn and Lights, Information and Convenience Services and Driving Directions.	S	S	S
THEFT-DETERRENT SYSTEM PASS-Key III, engine immobilizer and content theft alarm	S	S	S
TIRE PRESSURE MONITOR SYSTEM Does not apply to spare tire	S	S	S
STYLING AND FUNCTIONALITY			
LIGHTS High-Intensity Discharge (HID) xenon, projector headlamps, high/low bi-functional with blue tint lenses and chromed bezels	S	S	S
Articulating headlamps	—	—	S
Fog lamps, front halogen with projector technology	S	S	S
Daytime running lamps with automatic exterior lamp control	S	S	S
Headlamp control with automatic on/off	S	S	S
GLASS Solar-Ray deep-tinted, rear-side, quarter panel and liftgate	S	S	S
OUTSIDE MIRRORS Heated, power-adjustable, body-color with integrated turn signal indicators	S	S	S
Manual-folding	S	S	—
Power-folding with driver-side auto-dimming and memory	—	—	S
WIPERS Front and rear intermittent with washers	S	S	S
REAR LIFTGATE Power	S	S	S
LUGGAGE RACK SIDE RAILS Roof-mounted, chromed	S	S	S
LICENSE PLATE BRACKET Front mounting package	A	A	A
PACKAGES			
DRIVER CONFIDENCE PACKAGE Includes remote vehicle starter system, Ultrasonic Rear Parking Assist and rearview camera system integrated into rearview mirror	A	S	S
LUXURY PACKAGE Includes outside, power-folding, auto-dimming driver-side, body-color, heated mirrors with turn signal indicators; articulating headlamps; power, tilt and telescopic steering column; heated and cooled driver and front passenger seats	—	—	S
HIT-THE-ROAD ACCESSORY PACKAGE Includes body-color molded assist steps, Roof Rack Cross Rail Package and cargo area all-weather floor mat (dealer-installed)	A	A	A
TRAILERING PROVISION PACKAGE Extends trailering capacity up to 4,500 lbs. ¹² Includes heavy-duty engine cooling system, wiring harness and factory-installed hitch. Includes compact aluminum spare wheel.	A	A	A

	CX	CXL 1	CXL 2
WHEELS			
P64 19" 15-spoke machined aluminum	S	S	—
P6A 19" 9-spoke chrome-clad aluminum (late availability)	—	A	S
PPE 20" chrome-clad aluminum ¹³	—	—	A
TIRE SEALANT AND INFLATOR KIT	S	—	—
WHEEL Spare, compact	A	S	S
			
SPECIFICATIONS AND CAPACITIES			
ENGINE TYPE	3.6L VVT V-6 direct injection		
HORSEPOWER (HP @ RPM)	288@6300 rpm		
TORQUE (LB-FT @ RPM)	270 lb-ft@3400 rpm		
EPA-ESTIMATED MPG	17 city/24 hwy FWD 16 city/22 hwy AWD		
CARGO VOLUME (CU. FT.)¹⁴	115 behind 1st-row seats with 2nd and 3rd row folded 65.9 behind 2nd-row seat with 3rd row folded 23.3 behind 3rd-row seat		
SEATING CAPACITY	2/2/3 or 2/3/3 (front/middle/rear)		
FUEL TANK (APPROX.)	22 gallons		
BASE CURB WEIGHT	4,780 CX, CXL FWD 4,980 CX, CXL AWD		
MAX. TRAILER WEIGHT¹²	4,500-lbs rating with available Trailering Provision Package (2,000 lbs without package)		
DIMENSIONS (INCHES)			
WHEELBASE	118.9	SHOULDER ROOM, 1ST ROW	62.0
OVERALL LENGTH	201.8	SHOULDER ROOM, 2ND ROW	61.4
BODY WIDTH	79.0	SHOULDER ROOM, 3RD ROW	57.4
OVERALL HEIGHT		HIP ROOM, 1ST ROW	57.4
WITH LUGGAGE RACK	72.5	HIP ROOM, 2ND ROW	57.0
W/O LUGGAGE RACK	69.6	HIP ROOM, 3RD ROW	48.3
MINIMUM GROUND CLEARANCE	8.4	LEG ROOM, 1ST ROW	41.3
HEAD ROOM, 1ST ROW	40.4	LEG ROOM, 2ND ROW	36.9
HEAD ROOM, 2ND ROW		LEG ROOM, 3RD ROW	33.2
WITH SUNROOF	38.7		
W/O SUNROOF	39.3		
HEAD ROOM, 3RD ROW	37.7		

A _ AVAILABLE S _ STANDARD _ _ NOT AVAILABLE

¹Requires available option package. ²Go to gm.com/bluetooth to find out which Bluetooth phones are compatible with the vehicle. ³XM Radio requires a subscription, sold separately by XM after the first 90 days. XM Radio U.S. service only available in the 48 contiguous United States and the District of Columbia. For more information, visit gm.xmradio.com. ⁴RDS functions only where stations broadcast RDS information. ⁵Required XM Radio and XM NavTraffic monthly subscriptions sold separately by XM after trial period. XM NavTraffic only available in select markets. Certain real-time traffic data provided by NAVTEQ, ©2009 NAVTEQ. For more information, visit xmradio.com/navtraffic. ⁶Always use safety belts and the correct restraint for your child's age and size. Even in vehicles equipped with Passenger Sensing System, children are safer when properly secured in a rear seat in an appropriate infant, child or booster seat. Never place a rear-facing infant restraint in the front seat of any vehicle equipped with a passenger air bag. See the Owner's Manual and child safety seat instructions for more safety information. ⁷OnStar services require vehicle electrical system (including battery),

wireless service and GPS satellite signals to be available and operating for features to function properly. OnStar acts as a link to existing emergency service providers. Subscription Service Agreement required. Call 1-888-4ONSTAR (466-7827) or visit onstar.com for OnStar's Terms and Conditions, Privacy Policy, details and system limitations. ⁸Turn-by-Turn not available in certain areas. Visit onstar.com for coverage map. ⁹Ability to locate stolen vehicles and Remote Door Unlock success vary with conditions. ¹⁰Diagnostic capabilities vary by model. Visit onstar.com for details. ¹¹OnStar Hands-Free Calling requires a Hands-Free Calling-enabled vehicle, existing OnStar service contract and prepaid minutes. Not available in certain areas. Calls may be made to the U.S. and Canada only. ¹²Maximum trailer weight ratings are calculated assuming a base vehicle, except for any options necessary to achieve the rating, plus driver. The weight of other optional equipment, passengers and cargo will reduce the maximum trailer weight your vehicle can tow. See your dealer for additional details. ¹³See page 20 for details. ¹⁴Cargo and load capacity limited by weight and distribution.



GET PERSONAL. MAKE ENCLAVE YOUR VERY OWN WITH AVAILABLE ACCESSORIES CREATED SPECIFICALLY TO MATCH ITS DISTINCTIVE STYLE, AS WELL AS YOURS. ALL OF THESE ITEMS HAVE BEEN TESTED TO MEET BUICK'S ORIGINAL EQUIPMENT STANDARDS FOR PERFORMANCE AND APPEARANCE. THEIR COST CAN BE APPLIED TO YOUR PURCHASE, INSTALLED BY YOUR BUICK DEALER AND COVERED UNDER GM'S NEW-VEHICLE LIMITED WARRANTY.¹ JUST ASK YOUR DEALER.



ADVANCED TWO-WAY REMOTE START/REMOTE MONITORING SYSTEM THIS INTELLIGENT KEY FOB NOT ONLY STARTS ENCLAVE, BUT ITS DIGITAL READOUTS ALSO LET YOU CHECK THE AIR PRESSURE IN EACH TIRE OR HOW MUCH FUEL IS IN THE TANK. | **DUAL-PLAYER HEADREST DVD SYSTEM** INDIVIDUAL 7-INCH DIAGONAL LCD FLAT-SCREEN MONITORS AND A TOP-LOADING DVD/CD/MP3 PLAYER ARE INTEGRATED INTO THE BACK OF THE FRONT HEADRESTS. A PAIR OF WIRELESS HEADPHONES AND A REMOTE CONTROL ARE INCLUDED. | **ASSIST STEPS** THESE 6-INCH, HIGH-STRENGTH ALUMINUM STEPS TOPPED WITH FULL-LENGTH TRACTION PADS MAKE GETTING IN AND OUT OF YOUR ENCLAVE EASIER. | **19- AND 20-INCH CHROME WHEELS**² ADD A NEW LEVEL OF DIMENSION TO YOUR ENCLAVE WITH IMPRESSIVE 19-INCH AND 20-INCH WHEEL STYLES. THEY ARE CAST FROM HIGH-STRENGTH ALUMINUM, THEN GIVEN A LONG-LASTING, BRILLIANT CHROME FINISH.

¹GM Accessories permanently installed at the time of new-vehicle delivery are covered under the New-Vehicle Limited Warranty. If installed after delivery, coverage (parts and labor) is for the balance of the new-vehicle warranty or a minimum of 12 months/12,000 miles, whichever comes first. GM Accessories not requiring installation or purchased over the counter carry a 12-month limited warranty (parts only). Does not apply to licensed products. ²Use only GM-approved tire and wheel combinations. Unapproved combinations may change the vehicle's performance characteristics. For important tire and wheel information, go to gmaccessorieszone.com or see your dealer for details. ³Late availability. ⁴Additional charge, premium paint.

IMPORTANT WORDS ABOUT THIS CATALOG. Since some information may have been updated since the time of printing (July 2009), please check with your Buick dealer for complete details. Buick reserves the right to lengthen or shorten the model year for any product for any reason, or to start and end model years at different times.

NEW-VEHICLE LIMITED WARRANTY. This warranty is for GM vehicles registered in the U.S.A. See your Buick dealer for terms and conditions.

A 5-year/100,000-mile (whichever comes first) Transferable Powertrain Limited Warranty plus Roadside Assistance and Courtesy Transportation.

Covered for 4 years/50,000 miles (whichever comes first): The complete vehicle | Cosmetic corrosion resulting from defects | Tires | Repairs made to correct any vehicle defect | Towing to your nearest Buick dealership | No charge for most warranty repairs

Covered for 6 years/100,000 miles (whichever comes first): Rust-through corrosion

AN IMPORTANT NOTE ABOUT ALTERATIONS AND WARRANTIES. Installations or alterations to the original equipment vehicle (or chassis) as distributed by General Motors are not covered by the General Motors New-Vehicle Limited Warranty. The special body company, assembler, equipment installer or upfitter is solely responsible for warranties on the body or equipment and any alterations (or any effect of the alterations) to any of the parts, components, systems or assemblies installed by GM. General Motors is not responsible for the safety or quality of design features, materials or workmanship of any alterations by such suppliers.

ASSEMBLY. Buick vehicles and their components are assembled or produced by different operating units of General Motors, its subsidiaries or suppliers to GM worldwide. We sometimes find it necessary to produce Buick vehicles with different or differently sourced components than originally scheduled. Since some options may be unavailable when your vehicle is assembled, we suggest that you verify that your vehicle includes the equipment you ordered or, if there are changes, that they are acceptable to you.

ENGINES. Buick products are equipped with engines produced by GM Powertrain or other suppliers to GM worldwide. The engines in Buick products may also be used in other GM makes and models.

TRAILERING AND OFF-ROAD DRIVING INFORMATION. Please go to buick.com and carefully review the vehicle Owner's Manual for important safety information about trailering or off-road driving in your vehicle.

A NOTE ABOUT CHILD SAFETY. Always use safety belts and the correct restraint for your child's age and size. Even in vehicles equipped with the Passenger Sensing System, children are safer when properly secured in a rear seat in an appropriate infant, child or booster seat. Never place a rear-facing infant restraint in the front seat of any vehicle equipped with a passenger air bag. See the Owner's Manual and child safety seat instructions for more safety information.

ENHANCE YOUR OWNERSHIP EXPERIENCE. The Owner Center at My GMLink is an online service that helps you make the most of your vehicle ownership.

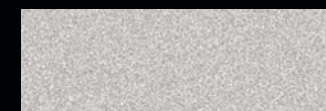
Sign up for e-mail reminders about service visits | Keep an online history of services performed | Read your vehicle Owner's Manual, warranty and more online | Receive the recall notices that apply only to your vehicle | Watch do-it-yourself videos and much more Register today at mygmlink.com.

GM, the GM logo, Buick, the Buick logo, OnStar, the OnStar emblem, QuietTuning and the slogans, emblems, vehicle model names, vehicle body designs and other marks appearing in this catalog are the trademarks and/or service marks of General Motors Corporation, its subsidiaries, affiliates or licensors. The XM name and related logos are registered trademarks of XM Satellite Radio, Inc. ©2009 General Motors Corporation. All rights reserved. Litho in U.S.A., July 2009.

To learn more about why Goodwrench service is the perfect companion for your Enclave, click on goodwrench.com.



EXTERIOR COLORS



QUICKSILVER METALLIC



GOLD MIST METALLIC³



CARBON BLACK METALLIC⁴



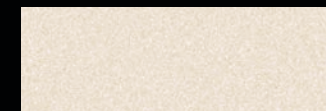
RED JEWEL TINTCOAT⁴



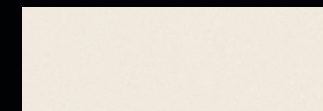
COCOA METALLIC



SILVER GREEN METALLIC

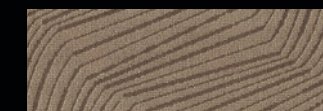


WHITE DIAMOND TRICOAT⁴



WHITE OPAL

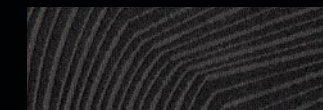
INTERIOR COLORS



CASHMERE CLOTH



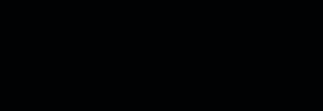
CASHMERE LEATHER



EBONY CLOTH



EBONY LEATHER



TITANIUM LEATHER

Cashmere interiors are accented with Cocoa trim. Ebony interiors are accented with Ebony trim. Titanium interiors are accented with Dark Titanium trim.

Our belief in continual improvement and accomplishment extends beyond our products to the world in which we live. That's why this catalog was produced with FSC-certified and environmentally sustainable printing practices, including zero landfill waste and minimal VOC emissions.



BUICK.COM