



By appointment
to HM The Queen
motor car manufacturer
Bentley Motors Limited
Crewe, Cheshire



By appointment
to HRH the Prince of Wales
motor car manufacturer
Bentley Motors Limited
Crewe, Cheshire



BENTLEY

THE MULSANNE AND
THE NEW MULSANNE SPEED



I WO

THE MULSANNE AND
THE NEW MULSANNE SPEED





INTRODUCTION ^{09/} DESIGN ^{20/} PERFORMANCE ^{32/}
INTERIOR ^{42/} IN-CAR TECHNOLOGY ^{54/}
PERSONALISING YOUR CAR ^{64/} MULLINER ^{92/}
DESIGNER'S CHOICE ^{96/} ACCESSORIES AND BENTLEY
COLLECTION ^{110/} EVENTS AND FINANCE ^{112/}
OVER TO YOU ^{114/} SPECIFICATIONS AND OPTIONS ¹¹⁶

Photography – cars illustrated:

Mulsanne:

Tungsten (Metallic)

Twine and Anthracite leather interior

Burr Walnut veneer

Mulsanne Speed:

Spectre (Metallic)

Camel and Beluga leather interior

Piano Black veneer



Vision unbound.

Great achievements come from fearless vision. A vision from within.

More than that, it is an idea set free and made real through extraordinary will.

The Mulsanne is one such vision. The ultimate expression of performance and luxury beyond compare, now proudly joined by its sibling, the Mulsanne Speed.

Both the Mulsanne and the Mulsanne Speed offer peerless comfort with effortless power, exquisitely crafted to create an environment where your drive time is time to think.

So it is no surprise that the Mulsanne appeals to free thinkers. Those people for whom tomorrow's vision arrives sooner than the rest.



“Vision is the art
of seeing what is
invisible to others.”

JONATHAN SWIFT

ANGLO-IRISH WRITER AND POET, 1667-1745.





The turning point.

It's often thought that Mulsanne is the name of the long, high-speed straight at the Le Mans circuit where Bentley made its reputation. Not so, say purists. This straight is the Ligne Droite des Hunaudières.

But at the southern end of Hunaudières is a sharp corner. A turn that imposes the toughest demands on drivers' brakes, tyres and suspension, for hour after hour during the world's most gruelling motorsport race. This is Mulsanne.

So it is apt that Bentley's flagship grand tourer should be named after this formidable bend. Because the Mulsanne is not only immensely fast, it is also a car of supreme poise and luxurious comfort.



The Mulsanne.

A pure expression of luxury performance, the Mulsanne is crafted throughout with relentless vision. A flagship vehicle that represents the pinnacle of Bentley's design, craft and engineering skills.

Under the Mulsanne's bonnet is a re-engineered 6¾ litre, twin-turbocharged V8 engine that refines power with exemplary control. Created for dynamic driving, it accelerates from 0 to 60 mph in 5.1 seconds (0 to 100 km/h in 5.3 seconds) to a top speed of 184 mph (296 km/h), enhanced by 8-speed automatic transmission for incredibly swift acceleration.

But the Mulsanne is not just about performance. It also embodies world-class comfort for a truly relaxing and purely pleasurable drive, whether you are behind the wheel or a passenger.

Inside and out, you will find the finest craftsmanship in evidence, using authentic materials, thoughtful design and discreet technology to achieve the highest levels of luxury and style.

The Mulsanne Speed.

With enhanced efficiency and increased performance, the new Mulsanne Speed is the most powerful Mulsanne, offering outstanding comfort, control and exclusive sports styling.

Confidently building upon the Mulsanne's ample performance, a re-engineered 6¾ litre twin-turbocharged V8 engine propels the Mulsanne Speed to 60 mph in 4.8 seconds (100 km/h in 4.9 seconds), on to a phenomenal top speed of 190 mph (305 km/h).

Dark tints to the exterior brightware and matrix grille distinguish the Mulsanne Speed, along with rifled stainless steel tailpipes, a new 21" wheel design and the subtle addition of the 'Speed' fender badge.

Polished stainless steel treadplates greet your entrance, etched 'Mulsanne Speed'. Inside there is a new duotone interior and handcrafted features, including drilled alloy sports foot pedals, a knurled sports gear lever, embroidered emblems and diamond quilted perforated hides.

Everything about the Mulsanne Speed is singularly crafted and distinct, subtly underlining the dynamism and confident control of this exquisite model.





DESIGN

A line of beauty.

The Mulsanne powerline is legendary. It is the distinctive line that swoops around the front wheel and along the waistline of the Mulsanne to meet the muscular curve of the rear wing, before gently curving back towards the front wing vent.

The powerline is core to Bentley's design DNA. You can trace it back to the 1952 R-Type Continental or even further. Each generation creates a leaner, smoother, more athletic line.

In the Mulsanne it expresses a body that's spacious, yet strong, dominant and graceful. Even at rest, the powerline conveys movement.

The flowing, organic lines our designers draw seamlessly unite exterior with interior, to showcase Crewe's craftsmanship and create an ambience of unparalleled luxury.

Together with the Mulsanne's high waistline, swept-back windscreen, long bonnet, proud matrix grille and the coupé-like D-pillar, the line conveys immense power, strength and endurance.

Impressions confirmed the instant you take the wheel.



Art of the body.

The subtle, flowing lines drawn by Bentley designers are difficult to realise in steel and aluminium. Difficult, but not impossible.

The Mulsanne's bodywork simply cannot be created by a conventional metal press. Instead, engineering teams collaborated to use aerospace superforming technology, where sheets of aluminium are heated to 500°C, then air pressured onto a single surface to perfectly achieve the designer's vision.

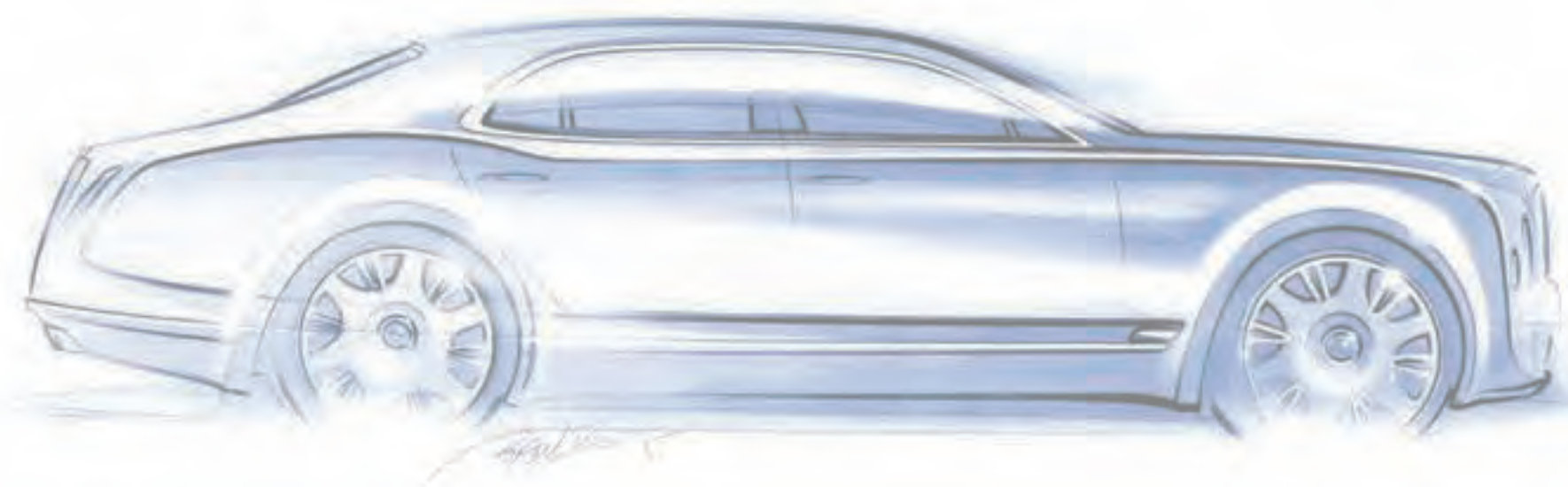
Superforming technology is a key innovation that allows Bentley's designers to craft seductively fluid and complex three-dimensional shapes for the Mulsanne. Sweeping yet sharp, these dynamic lines bestow a unique aura of supple power and sleek refinement.

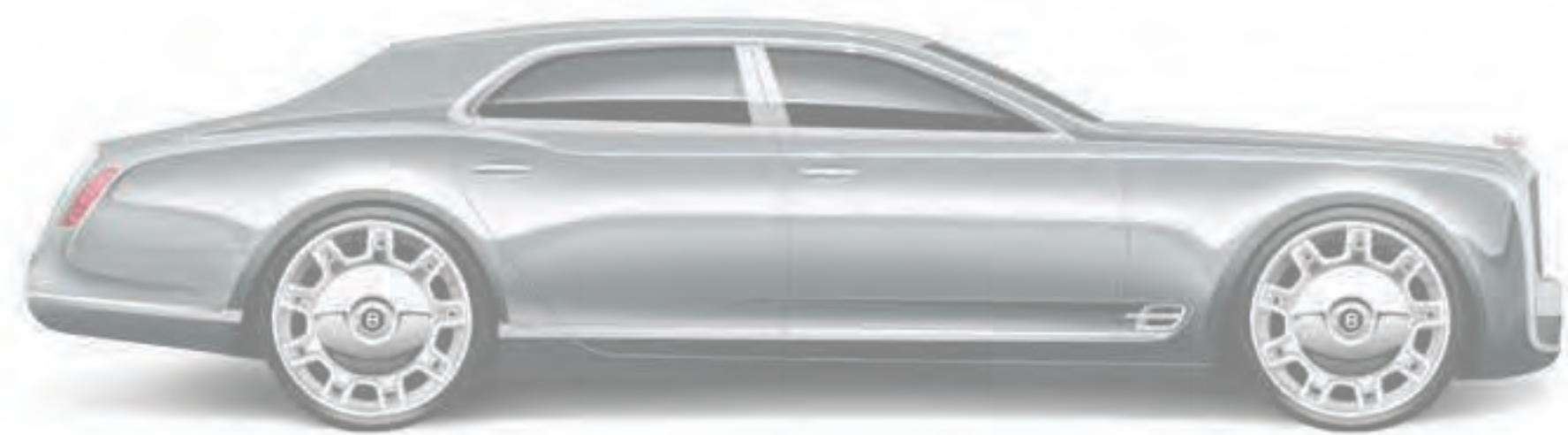
After superforming, the bodyshell curves are protected, primed, painted, hand-sanded, lacquered and polished to a mirror finish of sumptuous depth and fidelity.

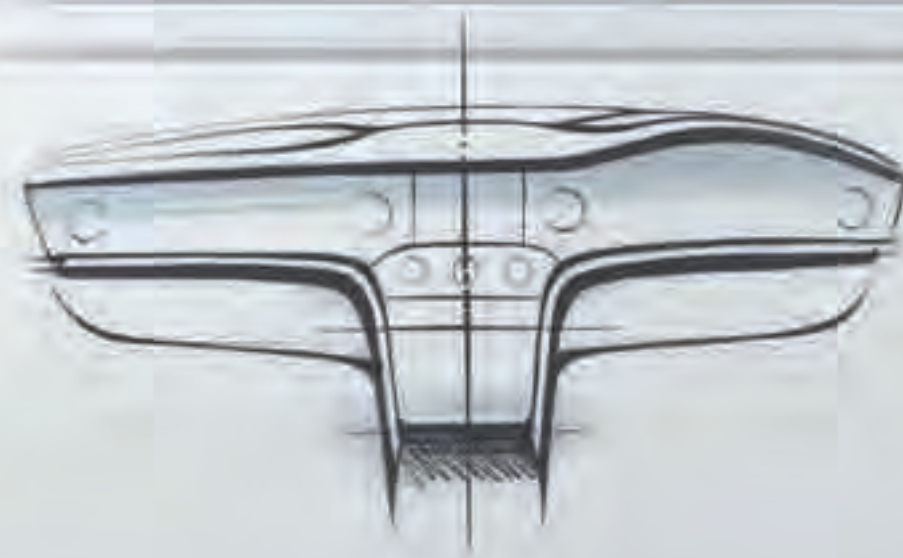
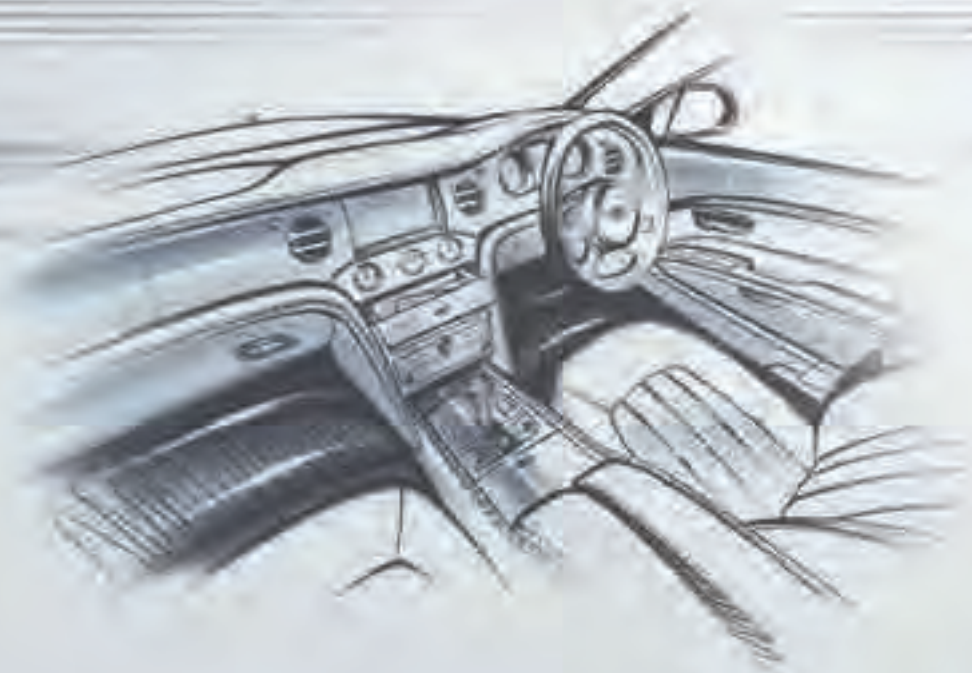
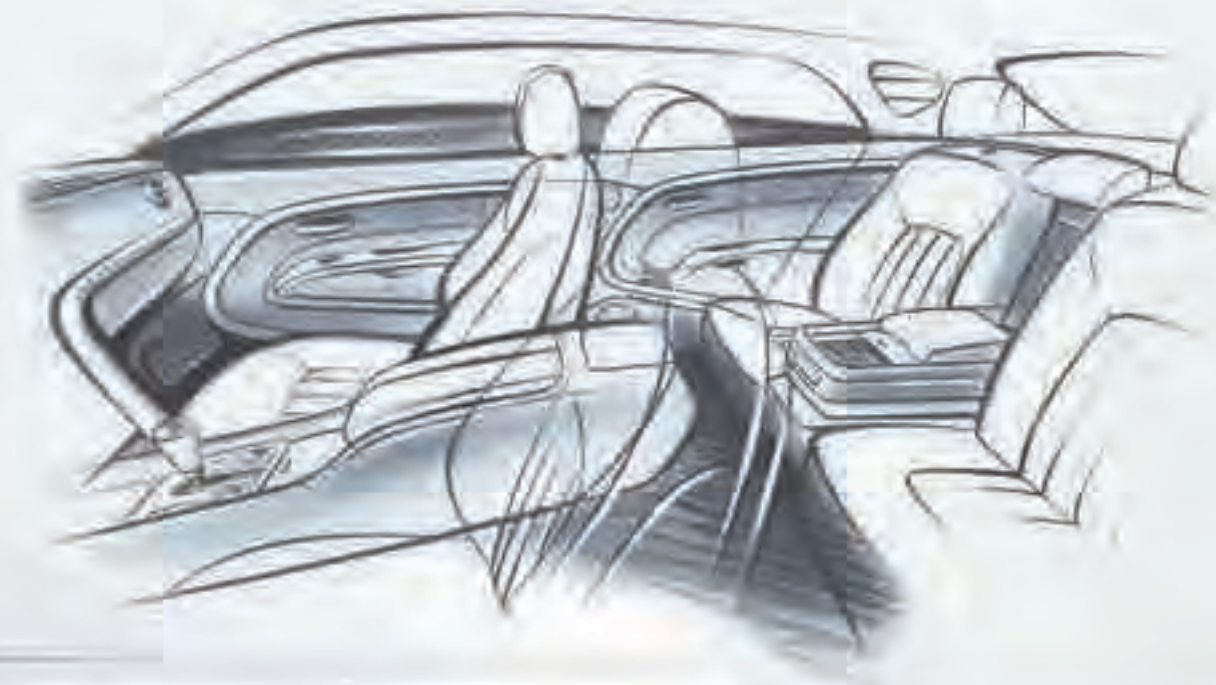
This is why it takes around 125 hours to create the Mulsanne bodyshell. It's a process that shows how the Mulsanne is crafted without compromise – a sophisticated fusion of traditional craftsmanship with cutting-edge technology.

It also shows the Mulsanne is no mere car. It is a work of art you drive.









Inspired from within.

As a bespoke Bentley, the approach to the Mulsanne interior stretches the capabilities of our engineers and craftsmen to the full.

Grasp the supple firmness of the hide wheel. It is the result of 15 hours of patient hand-stitching. Pull the organ stop levers and feel their smooth, precise glide.

Whatever your eyes can see or fingers can feel, there's uncompromising honesty, craft and accuracy in the use of materials.

What looks like polished steel is polished steel. Wood veneers display their natural colour with a mirror-matched grain. Every interior surface that could be leather is the highest grade leather hide.

So what you see is not just what you get. It's much more. A car truly built for you, without compromise.

Mulsanne: the facts.

- Retractable Flying 'B' in solid stainless steel (option)
- Upright solid stainless steel front matrix grille
- Steel monocoque body structure with superformed aluminium fender, bonnet and doors
- Elegant power line, running from front valance to rear haunch
- Wide oval polished stainless steel exhaust tailpipes
- Coupé style roofline with high waist and powerful haunch for sporty road presence





Mulsanne Speed: the facts.*

- 21" Mulsanne Speed wheel, individually machined from solid aluminium alloy
- Dark tint solid stainless steel matrix grilles to radiator, lower front bumper and wing vents
- Dark tint lights front and rear
- Solid stainless steel 'Speed' badge fitted to front wing lower brightware
- Polished stainless steel 'Speed' treadplate badge
- Rifled exhaust tailpipes

*In addition to Mulsanne.



PERFORMANCE



Peak experience.

Hand-built in Crewe, England to unparalleled standards of design, craftsmanship and engineering, the Mulsanne represents the pinnacle of performance.

It remains at this peak through a fine interweaving of luxury with power. So the same 6¾ litre twin-turbocharged V8 engine that floats the Mulsanne in near silence through a city can also propel the car from zero to 60 mph in just 5.1 seconds (0 to 100 km/h in 5.3 seconds).

The V8 also features cam phasing and variable displacement for exemplary torque delivery and fuel efficiency. Complementing these advanced technologies, lightweight pistons, connecting rods and a forged crankshaft further refine efficiency and throttle response.

And corners are just as much a thrill as the straights, thanks to the careful development work of Bentley's chassis engineers. Sport mode instantly tunes the Mulsanne for improved handling, with lowered ride height, optimum engine response and increased steering feel and accuracy, with suspension CDC (Continuous Damping Control) for ride refinement.

In every aspect, the Mulsanne's performance is designed to be equally rewarding whether you relax to enjoy the comfort of its ride, or you take the wheel to experience the sheer pleasure of its drive.

Balance of power.

Since the beginning, the Mulsanne demonstrated refinement and performance in harmony. But this vehicle is far more than a simple union of luxury with power.

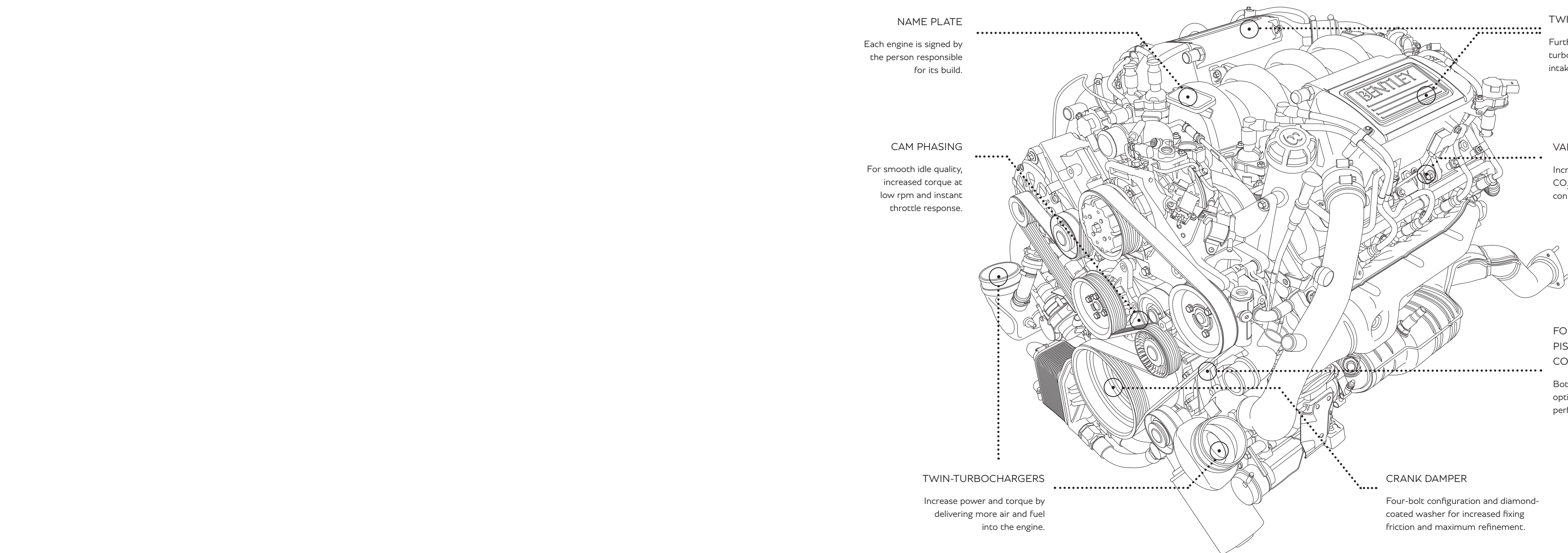
Its acceleration is a smooth, exhilarating surge of seemingly limitless power. Coupled with its advanced 8-speed automatic transmission, the Mulsanne can switch from whisper-quiet to breathtaking acceleration in a split second.

Yet inside the cabin, the potent character of the Mulsanne's 6¾ litre twin-turbocharged V8 engine is barely audible. Even as the throttle opens, and the engine note builds to a rich and powerful roar, all is calm. Finesse is woven into every level of performance.

Importantly, while the Mulsanne is effortlessly fast and quiet, it also has immense stopping power – confidently controlled by its massive 400 mm front brake discs (370 mm at the rear) to surely and steadily regulate power with the finest control.

Made for everything that lies ahead, the Mulsanne is the ultimate grand tourer. Delivering effortless acceleration, power and torque with peerless refinement, poise and assurance, it is the heart and soul of Bentley's vision.





NAME PLATE

Each engine is signed by the person responsible for its build.

CAM PHASING

For smooth idle quality, increased torque at low rpm and instant throttle response.

TWIN-TURBOCHARGERS

Increase power and torque by delivering more air and fuel into the engine.

TWIN-CHARGE COOLERS

Further boost the gains from turbocharging by cooling the air intake and increasing its density.

VARIABLE DISPLACEMENT

Increases fuel efficiency and lowers CO₂ emissions by running in V4 configuration when cruising.

FORGED CRANKSHAFT, PISTONS AND CONNECTING RODS

Both weight and strength-optimised for best performance and durability.

CRANK DAMPER

Four-bolt configuration and diamond-coated washer for increased fixing friction and maximum refinement.



Mulsanne: the facts.

- Engine: 6¾ litre twin-turbocharged V8
- Maximum power: 505 bhp / 377 kW / 512 PS @ 4,200 rpm
- Maximum torque: 1,020 Nm / 752 lb.ft @ 1,750 rpm
- Transmission: 8-speed automatic transmission with steering wheel-mounted paddleshifts
- Top speed: 184 mph / 296 km/h
- Acceleration: 0-60 mph in 5.1 seconds (0-100 km/h in 5.3 seconds)
- Electronically-controlled air springs with Continuous Damping Control (CDC) to continuously monitor and adjust the vehicle's damping, ensuring optimum control
- Drive Dynamics Control – four driver-selectable settings for CDC and power steering

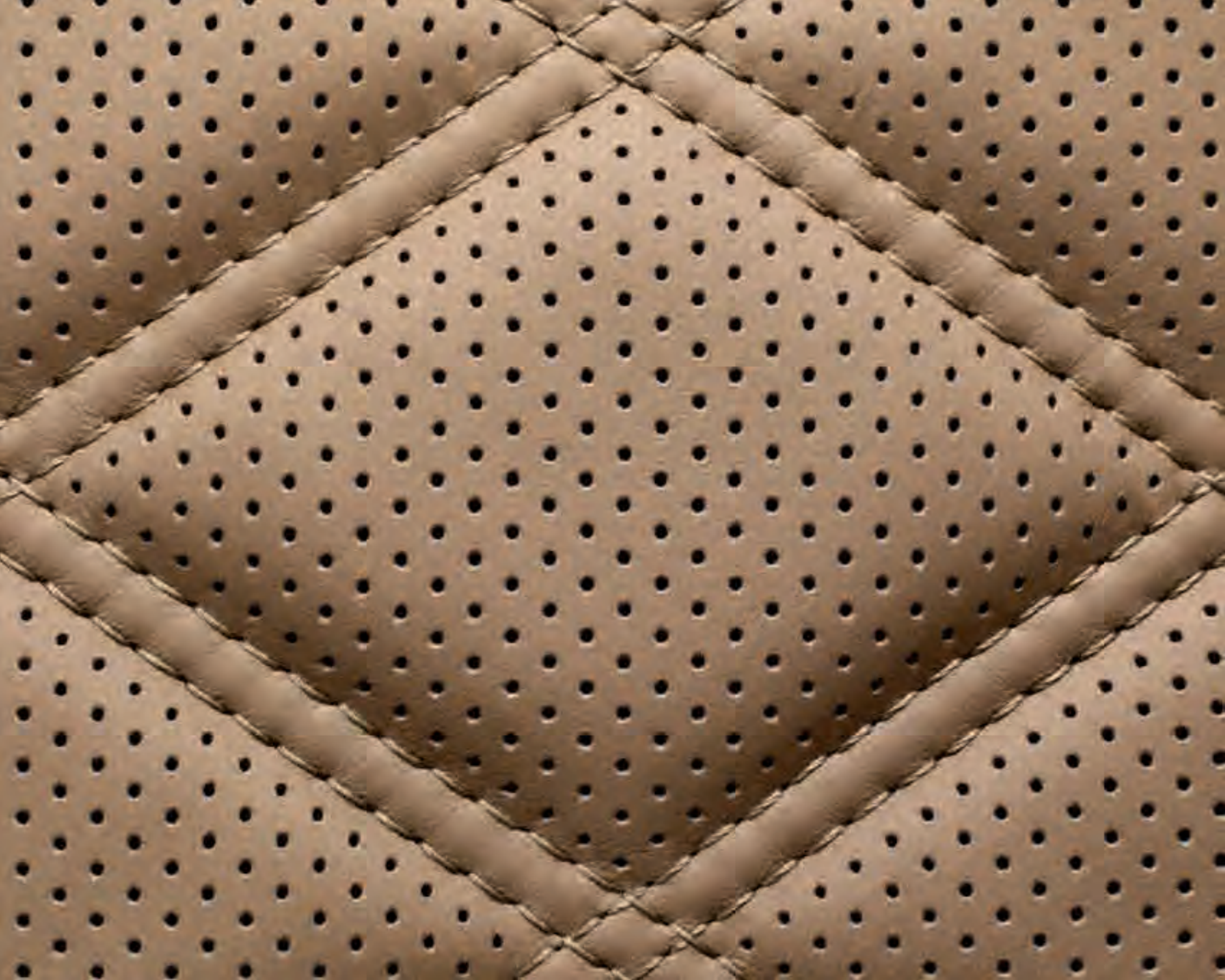


Mulsanne Speed: the facts.

- Engine: 6¾ litre twin-turbocharged V8
- Maximum power: 530 bhp / 395 kW / 537 PS @ 4,200 rpm
- Maximum torque: 1,100 Nm / 811 lb.ft @ 1,750 rpm
- Transmission: 8-speed automatic transmission with steering wheel-mounted paddleshifts
- Top speed: 190 mph / 305 km/h
- Acceleration: 0-60 mph in 4.8 seconds (0-100 km/h in 4.9 seconds)
- Electronically-controlled air springs with Continuous Damping Control (CDC) to continuously monitor and adjust the vehicle's damping, ensuring optimum control
- Drive Dynamics Control – four driver-selectable settings for CDC and power steering
- Modified Sport mode to lower ride height and increase grip, body control and driving accuracy



INTERIOR



Devotion to detail.

Design and detail are everything when it comes to luxury. In fact, at Bentley, we believe that attention to detail is integral to the design of a car such as the Mulsanne.

Which is why its world-leading interior is made with only the highest quality leathers, woods, metals and wools, each treated with specific care and utmost attention by the finest craftsmen.

Burr Walnut is just one of the woods that can be selected for the Mulsanne cabin, all of which show off the 'ring of wood' veneer. It started life many decades ago in the Californian forests, around the time when W.O. Bentley's Speed 6 were still dominating pre-war Brooklands.

And while the Burr Walnut, Chestnut, Vavona, Ash or Maple woods make their transatlantic journey to the workshops of Crewe, the hides required to make the Mulsanne upholstery travel from the high altitude pastures of northern Europe, where herds are free of insect bites and the fences are unbarbed.

Up to seventeen hides are needed to make the leather upholstery for the Mulsanne, stitched with such pride that our upholsterers sign the back of each hide.

Dedication to authenticity is integral to our ethos, evident in our use of materials. Solid stainless steel fittings feature throughout the Mulsanne, from the signature Bentley matrix grille to the hinges inside the glovebox. Instrument switches are given a pristine gloss finish.

Such obsessive attention to every detail is our hallmark. Because, as a bespoke Bentley, the interior of the Mulsanne is both built around you and crafted for you. Once, every car was crafted to the measure of its owner. At Bentley, this is a perennial truth.

"The details are not
the details. They
make the design."

*CHARLES ORMOND EAMES
AMERICAN ARCHITECT AND
FURNITURE DESIGNER, 1907-1978.*



World-class comfort.

As the pinnacle of luxury performance, the Mulsanne is designed with the highest calibre interior. Quite simply, it is a space like no other. A quiet, calm and deeply comfortable environment built for wellbeing – whether driving or being driven.

Design and detail are paramount to the interior specification. And the first place you might notice is the seats. At the front, both seats feature 14-way electrical adjustment with an easy entry and exit function, while the back seats have 8-way electrical adjustment, all equipped with lumbar support, two memory positions, adjustable heating and window blinds for the rear.

Vital to cabin comfort is air quality and circulation, controlled by a four-zone air conditioning system with a rear unit to adjust front and rear zone fan speeds and temperature, and traditional bullseye air vents and organ stop controls throughout.

And for those who want an extra level of comfort and privacy, the optional Comfort Specification includes rear seat headrests with airline 'sleeper' style wings that adjust to cradle the head, as well as carpet footrests and hide-covered cushions.

Together with privacy curtains smoothly controlled from the driver's seat or rear compartment, the Comfort Specification thoughtfully transforms the Mulsanne's rear cabin into a private haven of peace, to aid relaxation and sleep when you are chauffeur driven.





Mulsanne: the facts.

- Supremely comfortable seats with a choice of 24 traditionally tanned hides
- Hand-finished 'ring of wood', taking over 78 skilled hours to complete
- Traditional polished stainless steel bullseye air vents and organ stop controls
- Bright interior fittings in solid stainless steel
- Unique glass-effect switches
- Specially developed deep-pile carpets





Mulsanne Speed: the facts.

- Unique 'Speed' colour split
- Diamond quilted hide door panels and seat covering
- Embroidered Bentley emblems to four headrests
- Indented hide headlining
- Drilled alloy sports foot pedals
- Coined finish to interior door handles
- Knurled sports gear lever
- Knurled finish to organ stops





IN-CAR TECHNOLOGY



Connected thinking.

Traditional craftsmanship and subtle detail defines the perfectly refined interior of the Mulsanne.

Its fascia and consoles are classic and calm in their arrangement. So much so, you might not even guess they feature a comprehensive array of state-of-the-art infotainment technology, ready to entertain, connect and inform.

Everything you need is at your fingertips, or indeed the tip of your tongue. Voice control can be used for all major systems and operations, with satellite navigation to calculate your routes fast. And naturally a hands-free Bluetooth® telephone system gives you wireless connectivity to all your contacts.

For your endless entertainment, the Mulsanne's audio system features 14 speakers and two subwoofers, with full iPod® and MP3 player compatibility, a hide-lined device drawer and integrated cable connector. For audiophiles, this system can be further upgraded to a Naim™ for Bentley Premium Audio System.

These technologies create a discreet, yet well-connected luxury environment for the Mulsanne. A mobile, private space designed for connecting thinkers and inspiring visionaries.



Road show.

Concealed behind the Mulsanne's veneered front panel is an 8" high-resolution colour display for the infotainment and vehicle system, powered by a 60GB hard disc drive.

The disc drive gives you 20GB of personal storage space, a single slot DVD drive, two SD card readers and an inbuilt Gracenote database to detect artist, album and song names from your CDs.

Your iPod®, iPhone®, device or music player can be connected to the in-car audio system (either by ports or Bluetooth®) while stowed safely out of sight in a soft hide-lined drawer, protecting your device from any knocks.

And for passengers there's a remote control for climate settings, seat heating and ventilation, as well as the navigation and music systems. Back seat drivers have never enjoyed so much control.



Play on.

With the optional Entertainment Specification, the rear seats feature two independent 8" high-resolution screens fitted to the headrests, wireless headphones and their own DVD player, along with discreet ports to connect tablets, cameras, MP3 players and smartphones.

Complementing the rear seat screens to provide even more entertainment options, there are twin picnic tables that smoothly unfold with the touch of a button to reveal iPad® holders and a dedicated tray for wireless Apple® keyboards.

The Entertainment Specification also provides the Mulsanne with its own Wi-Fi router, providing internet access for up to eight devices.





The sound of speed.

The Mulsanne features acoustic glazing and soundproofing. Which means you can enjoy the refined sound performance of the Mulsanne's 14-speaker audio system.

Audiophiles can also upgrade to the optional Naim™ for Bentley Premium Audio System. Designed to be the best in-car audio in the world, the system delivers 2,200W of aural perfection through the world's most powerful production amplifier and 20 high-performance speaker drive units.

Eight DSP modes have been fine-tuned for 400 hours by sound experts to provide the ideal settings for listening pleasure.

The result is clear, accurate and thrilling sound, wherever you sit in the Mulsanne cabin.



PERSONALISING YOUR CAR

Your limitless vision.

The Mulsanne and new Mulsanne Speed brings you greater choice than ever. Over 100 exterior colours and four paint finishes, 24 leather hides and 10 species of veneer.

Not only that, Bentley design experts will create an exterior paint to match the colour of your choosing. Or you might specify an interior colour split that is unique.

Bespoke equipment can be designed and installed, such as a fold-away jewellery tray, a cigar humidior, or a champagne bottle cooler complete with crystal flutes.

Your choices are many. In fact, they are limitless.

And you can even start experimenting now, using our online configurator at BentleyConfigurator.com.

Or simply contact your local Bentley dealer. Together, we'll make sure that the Mulsanne you choose is truly your own.



PERSONALISING YOUR CAR



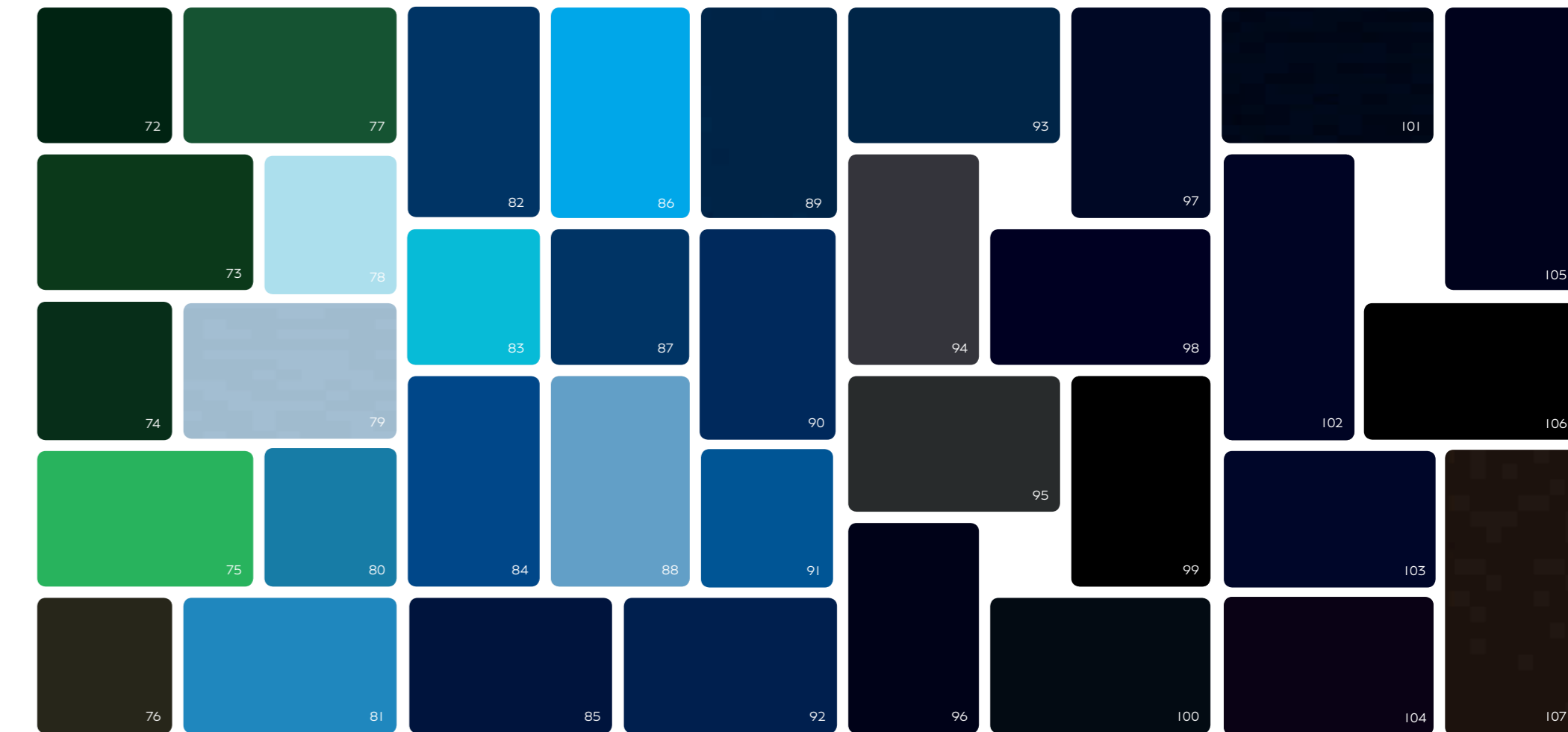
- 1 Violette
- 2 Grey Violet
- 3 Pale Velvet
- 4 Heather
- 5 **Black Velvet***
- 6 Azure Purple
- 7 Magenta
- 8 Passion Pink
- 9 Rubino Red
- 10 Sunset
- 11 Damson
- 12 Light Claret
- 13 **Burgundy***
- 14 Dragon Red (Pearlescent)
- 15 St James Red
- 16 **St James Red (Solid)***
- 17 Candy Red
- 18 Orange Flame
- 19 Claret
- 20 Amber
- 21 Burnt Orange
- 22 Bronze
- 23 Continental Yellow (Solid)
- 24 Monaco Yellow (Solid)
- 25 **Havana***
- 26 Sunburst Gold
- 27 Special Magnolia (Pearlescent)
- 28 **Gazelle***
- 29 Extreme Silver (Satin)
- 30 Old English White (Solid)
- 31 Special Magnolia (Solid)
- 32 **Camel***
- 33 Breeze
- 34 Citric (Solid)
- 35 Magnolia (Solid)
- 36 **Silver Storm***
- 37 Silver Taupe

PERSONALISING YOUR CAR



- 38 Silver Frost
- 39 Ghost White (Pearlescent)
- 40 White Satin
- 41 Ice
- 42 **Hallmark***
- 43 Arctica (Solid)
- 44 **Moonbeam***
- 45 Magnetic
- 46 **White Sand***
- 47 Extreme Silver
- 48 Light Grey Satin
- 49 Porcelain
- 50 **Glacier White (Solid)***
- 51 Silver Tempest
- 52 Sandstone
- 53 Dove Grey (Solid)
- 54 Light Gazelle
- 55 Pale Brodgar
- 56 Venusian Grey
- 57 **Dark Cashmere***
- 58 Dark Grey Satin
- 59 Tungsten
- 60 Burnt Oak
- 61 Arabica
- 62 **Brodgar***
- 63 **Granite***
- 64 Cumbrian Green
- 65 Barnato (Solid)
- 66 **Midnight Emerald***
- 67 Light Onyx
- 68 British Racing Green 4 (Solid)
- 69 Anthracite Satin
- 70 Storm Grey
- 71 Spruce

PERSONALISING YOUR CAR



- 72 Verdant
- 73 Light Emerald
- 74 Pale Emerald
- 75 Apple Green
- 76 Cypress
- 77 **Alpine Green***
- 78 Glacier Blue (Solid)
- 79 Jetstream
- 80 Light Windsor Blue
- 81 Silverlake
- 82 **Portofino***
- 83 Aquamarine
- 84 Neptune
- 85 Light Sapphire
- 86 Kingfisher
- 87 Pale Sapphire
- 88 **Fountain Blue***
- 89 **Marlin***
- 90 Peacock
- 91 Sequin Blue
- 92 Moroccan Blue
- 93 Blue Crystal
- 94 **Thunder***
- 95 Anthracite
- 96 **Meteor***
- 97 Windsor Blue
- 98 **Dark Sapphire***
- 99 **Onyx***
- 100 **Titan Grey***
- 101 Volcanic Black (Pearlescent)
- 102 **Beluga (Solid)***
- 103 Oxford Blue (Solid)
- 104 Black Crystal
- 105 Black Sapphire
- 106 Royal Ebony
- 107 Spectre

* Standard colour. All other colours available as a cost option. Please note, the colours reproduced are for representation purposes only and therefore vary slightly from the actual vehicle.

The colour is you.

Although we offer a choice of over 100 exterior colours for the Mulsanne, we understand you might not see the exact colour you have in mind.

Fortunately, our paint specialists can create any colour you bring to them – and reproduce it in a mirror-like finish on your Mulsanne.

A vintage bracelet, inset with amethyst sapphires, is recreated in a bespoke exterior finish on your Mulsanne.

The bracelet's amethyst sapphires are perfectly captured in a unique paint finish by our specialists to captivating effect – a shining metallic tone mirroring the iridescent light of the gemstones.



Duotone colour collection.

Duotone paint finishes give you the opportunity to create an even more individual exterior and give the Mulsanne your own style.

The Bentley Colour and Trim team have created a range of duotone combinations which provide the perfect complement for the Mulsanne, and accentuate its flowing lines.

You may choose from a palette of complementary colours offering light over dark, or dark over light, all of which are meticulously applied and finished.



Example shown – Moonbeam over Tungsten (light over dark).
Reverse combinations also available.



Duotones are available as a cost option.

Please note, the colours reproduced are for representative purposes only and therefore vary slightly from the actual vehicle.
Reverse combinations also available.



20" MULSANNE
ALLOY WHEEL - PAINTED†



21" 2-PIECE 5-SPOKE
ALLOY WHEEL - PAINTED



21" CLASSIC
ALLOY WHEEL - PAINTED



21" 2-PIECE MULLINER
ALLOY WHEEL - PAINTED



21" MULSANNE SPEED
WHEEL - PAINTED††



21" MULSANNE SPEED WHEEL
- DARK TINT WITH BRIGHT
MACHINED ACCENTS*



20" MULSANNE
ALLOY WHEEL - CHROMED



21" 2-PIECE 5-SPOKE
ALLOY WHEEL - POLISHED



21" CLASSIC
ALLOY WHEEL - POLISHED



21" 2-PIECE MULLINER
ALLOY WHEEL - POLISHED



21" MULSANNE SPEED
WHEEL - POLISHED*

†Mulsanne standard wheel ††Mulsanne Speed standard wheel.
All other alloys available as a cost option. * Available on Mulsanne Speed only.

Wheels.

Wheels for the Mulsanne and the Mulsanne Speed are available in a broad range of designs and finishes including painted, polished, chromed or dark tint.

Just like the rest of the exterior, they were all designed at Crewe, so they match the car's proportions perfectly.

For full all-weather capability, winter compound tyres are also available from your Bentley dealer.



Interior veneer.

It takes 80 years for the ethically sourced burr root ball of a walnut tree to reach maturity – and weeks in our wood shop to achieve immortality.

When the tree has finished its productive life, the precious root ball is shaved into leaves 0.6 mm thick, stacked, matured and kept in carefully climate-controlled storage chambers. It takes a full set of 24 leaves from the same root ball, with their stunning recurring pattern, to make the Mulsanne's cabin.

Wood veneer are mirror-matched, cured for 72 hours, fine sanded, and then treated for over five weeks with five or more layers of clear lacquer to enhance the natural beauty of its grain and achieve a finish to satisfy our precise and exacting standards.

The result is a veneer that perfectly unites the soft, tactile leather trim finishes of the Mulsanne cabin.





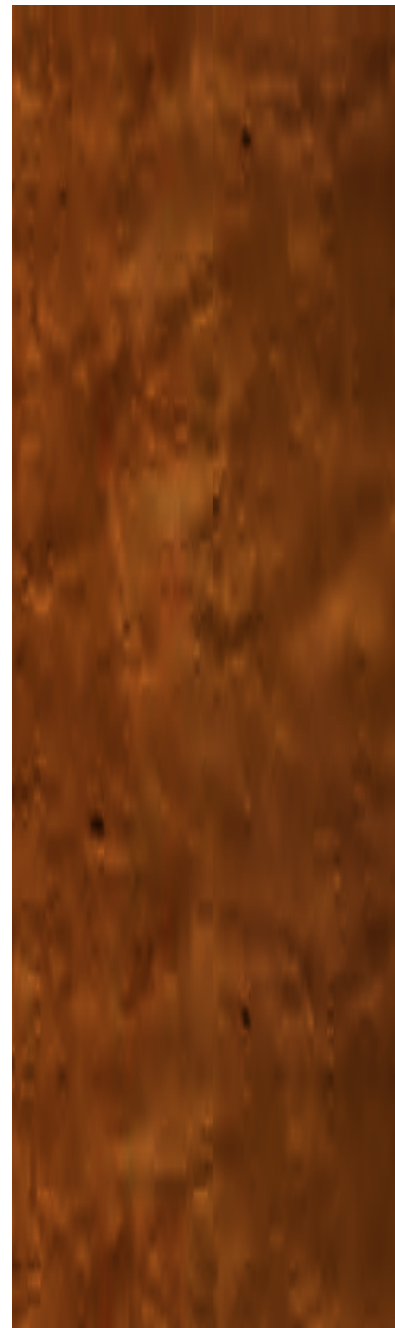
Birds Eye Maple



Olive Ash



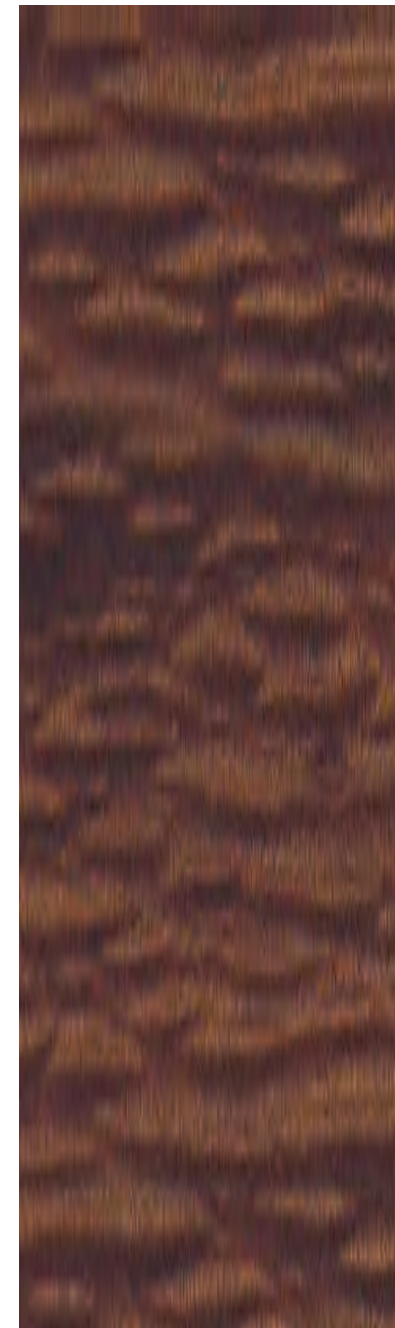
Tamo Ash



Chestnut



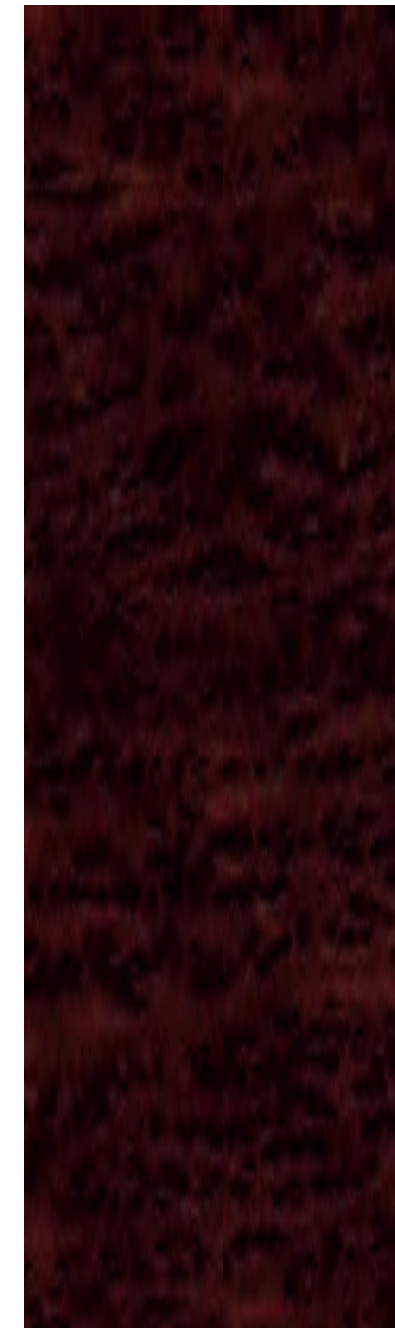
Vavona



Sapelli Pommele



Burr Walnut†



Dark Stained Vavona



Dark Stained Burr Walnut*



Piano Black*



Interior hides.

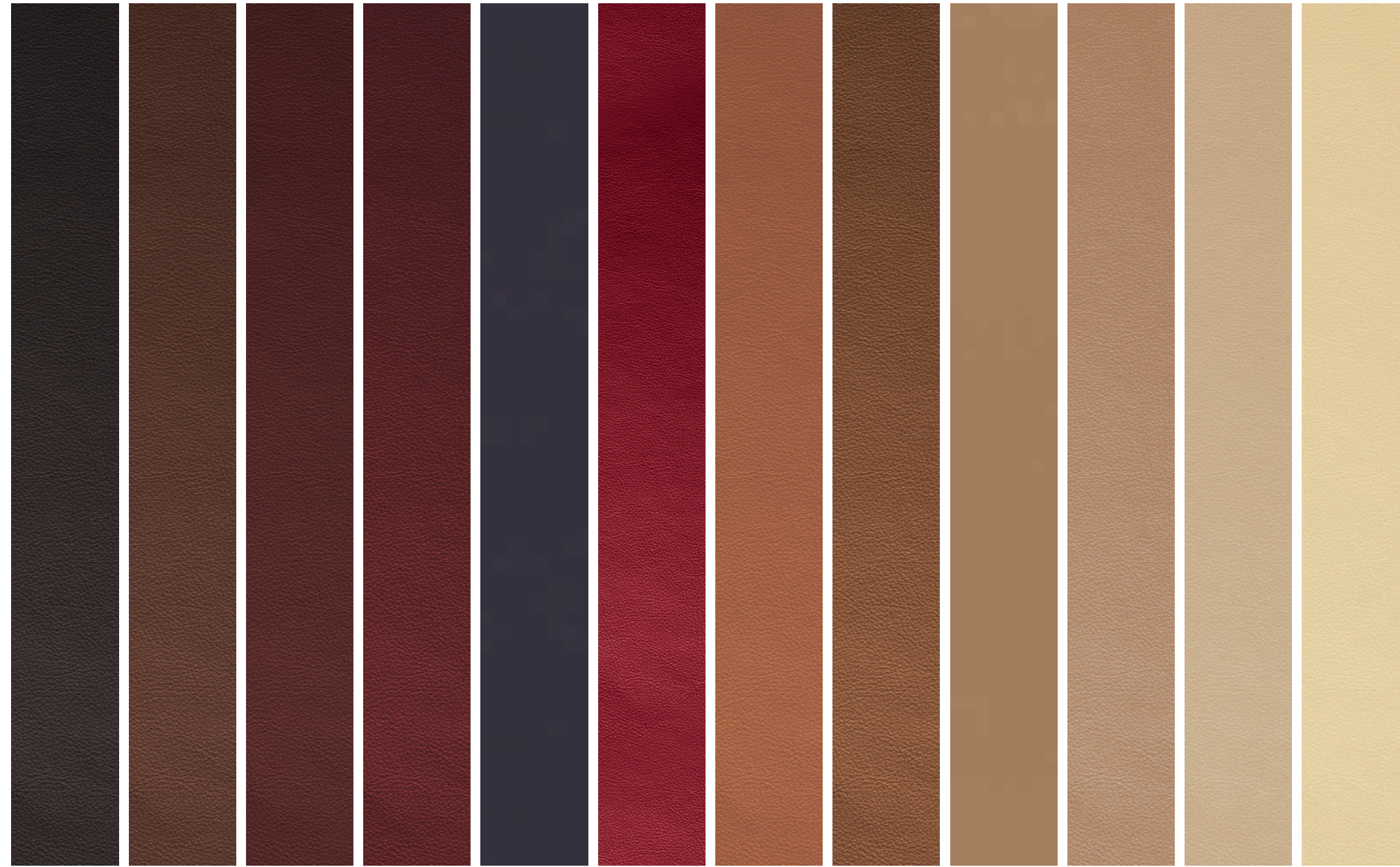
Hides are natural products, but Bentley craftsmen and women are perfectionists. They select only A-Grade leather from northern European herds that graze at higher altitudes, where insect bites and other disfiguring marks are less likely to be found on the animals. Bentley would never resort to surface embossing to disguise imperfections.

Before delivery to Crewe, the hides undergo a traditional tanning process, giving them a rich, mature leather aroma. Only then is each hide pre-tensioned and examined, before it is passed to the upholsterers.

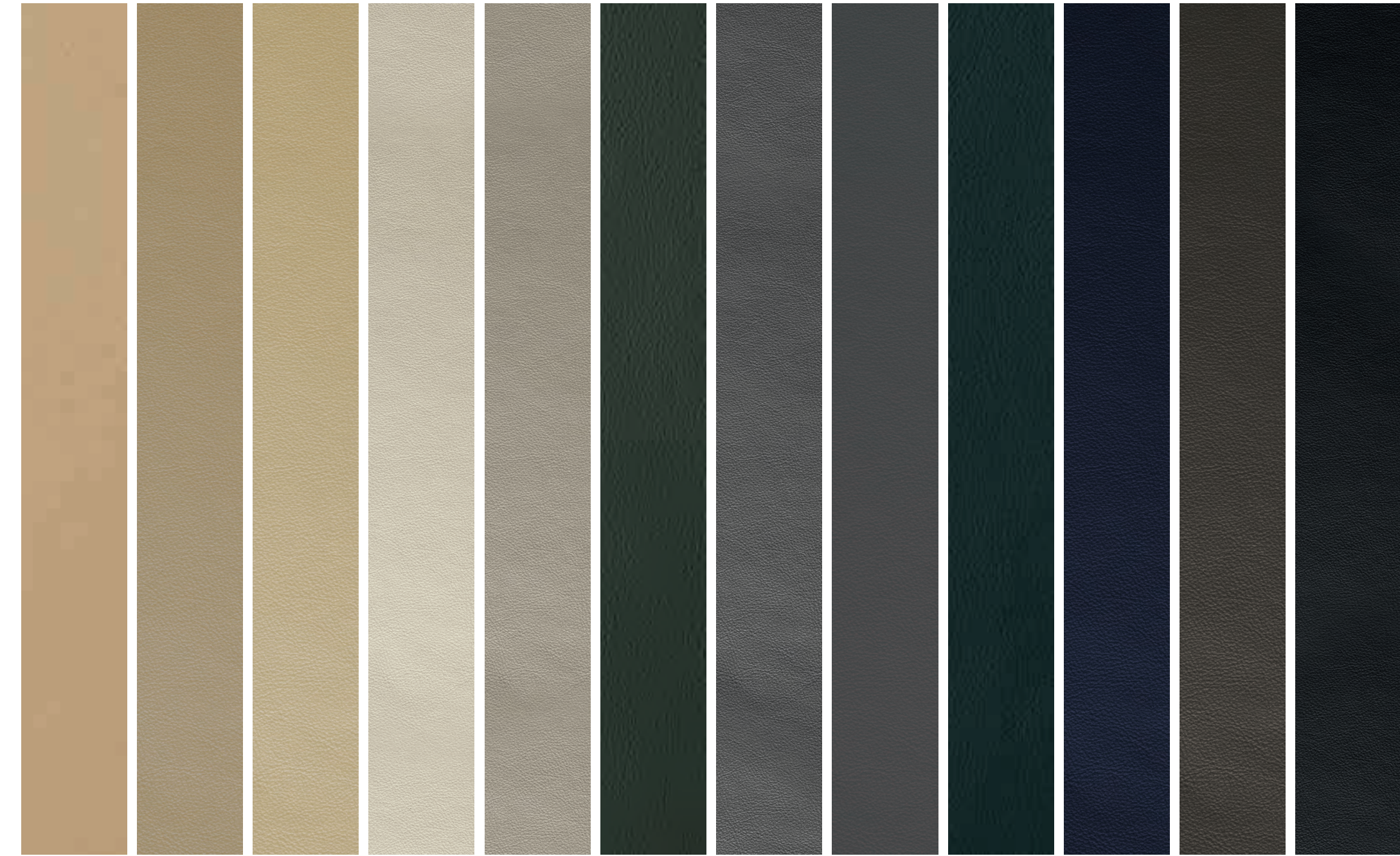
Handcrafted to individual taste, a choice of 24 different hide tones beautifully complements both the interior and the exterior finishes.

There are many hide and colour combinations to choose from, but whichever you select, you can rely on the exacting standards of the craftsmen and women who selected them for you.





Burnt Oak Cognac Redwood Fireglow Damson Hotspur Newmarket Tan Saddle Camel Autumn Twine Magnolia



Saffron Cashew Shortbread Linen Portland Cumbrian Green Porpoise Anthracite Brunel Imperial Blue Highland Hare Beluga



Extra cool.

By now, you might have gathered there's no such thing as a standard specification for the Mulsanne.

There are, quite simply, an endless number of choices. The optional bottle cooler, for example, holds two bottles in a canted position (so that a half-full bottle can be stored without spillage).

Discreetly hidden behind a door between the rear passenger seats, the cooler features a powered, frosted glass cover and white LED lighting, with holders for three bespoke champagne flutes, designed for Mulsanne by David Redman of London and inspired by the 5-spoke Mulsanne alloy wheel design.

You may find such a feature delightful (perhaps even essential), or there may be other options that suit your needs, such as privacy curtains or ambient interior mood lighting.

Yet, with every aspect, Bentley always offers excellence of choice – and whatever you choose is your own personal creation.





Interior options.

- Comfort Specification*
- Contrast or cross-stitching
- Emblem stitching
- Hide trimmed and veneer steering wheel
- Heated steering wheel
- Ventilated seats with massage function
- Leather seat piping
- Veneered picnic tables
- Deep-pile Wilton carpet overmats
- Illuminated fold down vanity mirrors
- Refrigerated bottle cooler and crystal champagne flutes
- Privacy curtains
- Bentley wing badge and chrome inlay strip to waistrails and badge to fascia



*Please see full details of the Comfort Specification on page 119.



Redefining driving.

Emphasising the Mulsanne's sporting character, the Mulliner Driving Specification enhances the impressive luxury performance credentials of the Mulsanne, effortlessly resolving its key qualities of relaxation and exhilaration.

THE MULLINER DRIVING SPECIFICATION FEATURES:

- 21" 2-piece Mulliner alloy wheel
- Mulliner 'Flying B' style wing vents in polished stainless steel
- Black matrix grilles or optional stainless steel matrix
- Unique Mulliner treadplate plaques to both front door sills
- Sports-tuned driver selectable suspension and steering settings
- Diamond quilted seats and door panels with perforated hide
- Indented hide headlining
- Knurled sports gear lever with hand cross-stitched hide
- Coined interior door handles
- Knurled organ stop air vent controls
- Drilled alloy sports foot pedals
- Embroidered Bentley wings to the front and rear seats



The making of a name.

Established in 1897 by Henry Jervis Mulliner, H.J. Mulliner & Co. was originally one of Britain's first coachbuilders. And so it was ideally placed to begin crafting bespoke bodywork for the new horseless carriages that emerged in the 1900s.

As the leading coachbuilder in Britain, Mulliner was asked to make Bentley's automobile coachwork for the 1923 Olympia Motor Show in London, a few years after Bentley was founded.

This creative partnership of two prestigious names went from strength to strength, cemented when H.J. Mulliner became Bentley's specialist coachbuilding division in 1959, enabling the creation of truly unique vehicles for Heads of State, including Her Majesty the Queen.

From that time, Mulliner has allowed the personalisation of every vehicle, continuing today with the Mulsanne, where practically every aspect can be customised, from the mirror-matched wood veneers and leather upholstery hides, to bespoke accessories, decorative etching, inlays and personally-commissioned colour schemes.



One of a kind.

Luxury is the art of the possible. As the definitive enhancement of luxury, Mulliner personal commissioning allows you to create a unique individual statement to make the Mulsanne truly yours.

One of the ways you can do this is through Mulliner's Bespoke Hide Service, where a hide colour can be matched to an item of your choice. This bespoke colour can be created for a single-tone interior, or a duotone interior to complement an existing hide, and also used to match carpets and exterior paint.

Another way to tailor a unique look is through Mulliner's Hidden Delights. Inspired by the interior lining of Savile Row suits, discreet areas of the Mulsanne's interior are trimmed with a brightly coloured hide, highlighted with contrast stitching and embroidery. A distinct modern twist to traditional Bentley styling.

Mulliner allows you to define your unique style. It's the freedom to challenge expectation and realise your vision.





Colours come to life.

For many people, the pleasure of commissioning a bespoke Bentley is all about finding that perfect combination of interior and exterior colours. And the near-infinite permutations of paint, veneer, hide and stitching are something to relish.

When a palette of colours is combined successfully, the result is both striking and natural. The subtlest adjustment of just one hue can somehow unlock the beauty of its surrounding tones and colours.

Here our designers demonstrate the power of a well-planned palette, with a selection of their personal favourites.

'Dark Energy'

Seemingly black, this moody reptilian exterior paint finish is accentuated with hints of gold metallic behind flecks of green. It is combined with a duotone interior, carbon fibre surfaces for the doors and a shining Piano Black veneer throughout. This colour scheme was chosen for one of the cars photographed for this book.



Mulsanne Speed



Exterior Paint: Spectre
Main Hide: Camel
Secondary Hide: Beluga
Veneer: Piano Black





'Night Storm'

A strong, steely exterior with a rich metallic sheen and bright finish, contrasted by a warm, duotone interior with Burr Walnut veneer.



Mulsanne



Exterior Paint:
Tungsten

Main Hide:
Twine

Secondary Hide:
Anthracite

Veneer:
Burr Walnut

'Voyage'

Inspired by a vintage sequin blue dress, this bright and vibrant exterior is accentuated by a contrasting duotone interior with blue and linen naval cues and a Dark Stained Walnut veneer.



Mulsanne Speed



Exterior Paint:
Sequin Blue

Main Hide:
Linen

Secondary Hide:
Imperial Blue

Veneer:
Dark Stained
Walnut



'Obsidian'

Deep and striking volcanic black finish, complemented by a dramatic contrasting duotone interior and shining Piano Black veneer.



Mulsanne Speed



Exterior Paint:
Onyx

Main Hide:
Fireglow

Secondary Hide:
Beluga

Veneer:
Piano Black

'Magma'

Mica pigment and aluminium tints create a bold and vibrant statement. With a Beluga single colour interior to complement its exterior, it makes a dramatic statement of sporting intent. The dark Beluga hide is lifted by the use of Orange Flame contrast stitching. The Vavona veneer has a hint of orange to it, providing a subtle echo of the exterior.



Mulsanne Speed



Exterior Paint:
Orange Flame

Main Hide:
Beluga

Secondary Hide:
Beluga

Veneer:
Vavona





'Spirit'

A unique, 3-layer pearlescent white exterior finish radiates a gem-like, ethereal quality, grounded with rich, earthy duotone interior and a Chestnut veneer. Inside, the vibrant use of Damson secondary hide frames and contrasts the Linen main hide.



Mulsanne



Exterior Paint:
Ghost White

Main Hide:
Linen

Secondary Hide:
Damson

Veneer:
Chestnut

Accessories.

Our designers and engineers are involved in setting the specifications for each of the accessories for the Mulsanne, which are then rigorously tested to Bentley standards.

Accessories include protective personalised car covers for both indoor and outdoor use, self-righting wheel centre badges and winter traction aids for snow and ice.

The jewelled Bentley torch features the Bentley 'B' etched into the lens, while a child seat trimmed with Bentley upholstery can even be embroidered with your child's name.

For details of our full accessories range, please contact your local Bentley dealer.



PRIVACY CURTAINS



ILLUMINATED TREADPLATES



LALIQUE FOR BENTLEY
CRYSTAL EDITION FRAGRANCE (FOR MEN)

Bentley Collection.

Bentley is one of the few remaining companies in the world from which you can still commission a bespoke, hand-built car. The Bentley Collection is a remarkable range of items, all developed with the same level of craftsmanship and attention to detail afforded to our cars.

Our beautiful selection of handmade accessories includes treasures bearing artisan names such as Breitling for Bentley, Anthony Holt Silversmiths and Geoffrey Parker Games.

To view our entire Bentley Collection, please contact your local Bentley dealer or simply visit our online store at Shop.BentleyMotors.com



BESPOKE VALET BOX -
PIANO BLACK AND HOTSPUR LEATHER



JEWELLED TORCH



BRANDED VALVE CAPS



CHILD SEAT (GROUP 2 + 3)



MULSANNE FITTED LUGGAGE SET



BREITLING FOR BENTLEY DESK CLOCK



LADIES PRINTED SILK SQUARE SCARF



Bentley events.

Every year, Bentley runs a series of events exclusively for Bentley drivers, enthusiasts and anyone who wishes to gain a closer acquaintance with the Bentley brand.

From the pure exhilaration of the Power on Ice experience, to grand tours through some of Europe's most impressive landscapes, our range of unique events offers something for the adventurous explorer and thrill seeker.

To discover more, visit Events.BentleyMotors.com

Financing your Mulsanne.

We tailor our finance agreements to ensure you make the most of your investment. While other financiers look only at their customer, our experts create bespoke packages, based not just on your personal circumstances, but also on the car you commission.



Events.BentleyMotors.com



The Bentley Experience.

The Bentley Experience begins at CWI House, offering you an immersive and memorable brand experience at the home of the Bentley factory in Crewe – where each and every one of our cars is crafted to perfection.

The CWI House showroom contains the full model range with a brand new Personalisation area, bespoke Mulliner room and dedicated boutique, giving you a clear window into the world of the Bentley brand.

With the opportunity to visit Bentley's factory, the Bentley Experience offers a unique insight into the world-class design and engineering required to create a Bentley motor car. Factory visits are available exclusively to customers.

When you commission your Bentley in person, you will discover exactly what craftsmanship means. A personal guide will tailor every detail of your visit to your time, tastes and interests, right down to selecting the colour of thread used to cross-stitch the interior you desire. Whether you have an hour to spare or a whole day, seeing the way your car is made will only accentuate the pleasure of owning it.

To book a visit to CWI House and the factory, please visit BentleyMotors.com



Yours for the taking.

The Mulsanne and the Mulsanne Speed are nothing less than an evolution in the luxury performance grand tourer.

But the story doesn't stop there. The radical new body shape remains recognisably, iconically Bentley. The technology behind the driving experience is unrivalled among vehicles of its kind. And when it comes to transporting passengers in comfort, there is nothing quite like it.

For more information, visit BentleyMotors.com or scan the QR code below:





Mulsanne

Technical Specification

DRIVETRAIN

Type:	6¾ litre twin-turbocharged V8 Cam phasing and variable displacement – a first for the ultra-luxury sector
Max Power:	512 PS / 505 bhp / 377 kW @ 4,200 rpm
Max Torque:	1,020 Nm / 752 lb.ft @ 1,750 rpm
Emission Controls:	EU6 and LEVII emissions compliant
Transmission:	8-speed automatic transmission with electronic shift interface, sport mode and steering wheel-mounted paddleshift
Driveline:	Rear wheel drive

CHASSIS

- Mulsanne 20" light-alloy wheels with 265 x 45 x ZR20 tyres
- Double wishbone front suspension
- Multi-link rear suspension with toe and brake reaction control. Uniquely developed for Mulsanne to handle extreme torque
- Electronically-controlled air springs with Continuous Damping Control (CDC) to continuously monitor and adjust the vehicle's damping, ensuring optimum control
 - Automatic ride height control, sensitive to speed and load
- Servotronic speed-sensitive power steering with two settings selectable by Drive Dynamics Control
- Drive Dynamics Control – four driver-selectable settings for CDC, engine management (cylinder deactivation) and power steering:
 - Three standard modes: Bentley, Sport and Comfort
 - A fourth mode, Custom, allows the driver to tune the system to a preferred driving style
- Electronic Stability Control (ESC) with ABS, traction control, hydraulic brake assist, electronic brake pre-fill and automatic hill-hold control
- Twin-booster braking system with ventilated discs and Electronic Brake force Distribution (EBD)
 - Bentley-branded front brake calipers
 - Front brake discs: 2-piece assembly with 400 mm diameter x 38 mm thick iron disc and lightweight aluminium hub

- Rear brake discs: 370 mm diameter x 30 mm thick iron disc with lightweight aluminium hub
- Electronic parking brake with drive-away assist and hill-hold feature
- Choice of tyre repair/inflation kit or emergency spare wheel and toolkit

DIMENSIONS & CAPACITIES

Wheelbase	3,266 mm / 10 ft 8 in
Overall length	5,575 mm / 18 ft 3 in
Width (across mirrors)	2,208 mm / 7 ft 3 in
Width with mirrors folded	1,926 mm / 6 ft 4 in
Overall height	1,521 mm / 5 ft
Unladen weight (Markets outside North America)	2,685 kg / 5,919 lb
Unladen weight (North America)	2,711 kg / 5,977 lb
Gross weight	3,200 kg / 7,055 lb
Front axle weight limit	1,535 kg / 3,384 lb
Rear axle weight limit	1,730 kg / 3,814 lb
Fuel tank	96 litres / 21.12 gallons / 25.36 US gallons
Boot volume	443 litres / 15.75 cu ft
Drag	0.33 Cd
Turning circle (kerb to kerb)	12.9 m

PERFORMANCE

0-100 km/h	5.3 seconds
0-160 km/h	11.5 seconds
0-60 mph	5.1 seconds
0-100 mph	11.6 seconds
Maximum Speed	184 mph / 296 km/h

FUEL CONSUMPTION (EU CYCLE)

Urban	12.4 mpg / 22.8 / 100 km
Extra-Urban	28.4 mpg / 9.9 / 100 km
Combined	19.3 mpg / 14.6 / 100 km
CO ₂ Emissions	342 g/km
Range	645 km

FUEL CONSUMPTION (EPA CYCLE)

City Driving	12 US mpg
Highway Driving	19 US mpg
Combined	14 US mpg

BODY & EXTERIOR

- Steel monocoque body structure with front and rear energy-absorbing crumple zones
- Aluminium closures
 - Superformed aluminium front wings
 - Aluminium bonnet
 - Aluminium doors with superformed structure and extruded aluminium side impact beams
- Composite polymer bootlid housing fully concealed antennae systems
- Painted radiator shell with bright stainless steel matrix grille and 2D Bentley winged 'B' badge
- Paintwork applied and polished by hand to a mirror finish
 - Choice of 25 paint colours especially selected for Mulsanne
- Black matrix grille to lower bumper apertures
- Front wing vents with black matrix grille
- Polished stainless steel brightware to glass surrounds
- Polished stainless steel embellishers to doors and bumpers
- Door pillar finishers in steel with gloss black painted finish
- Polished stainless steel 'Mulsanne' treadplates and commissioning plates
- Wide oval polished stainless steel exhaust tailpipes
- Twin Bi-Xenon projector headlamps with LED halo for supplementary main beam, light-sensing auto operation, daytime running light signature and integrated washer jets

- Floating-ellipse style, LED rear light clusters and discreet high-level stop lamp to rear screen
- Colour-keyed, electronically adjustable door mirrors with heating, power folding, reverse-dip, two memory positions, electrochromatic dimming and integrated puddle lamps
- Keyless entry system with chromed metal door handles and engine start button
- Soft-close power latching to all doors for easy entry/exit
- Power bootlid operation with emergency releases inside boot and under rear seat
- Park distance control to front and rear with audible signal and graphics displayed via infotainment screen

INTERIOR

- Hand-selected leather to all trimmed surfaces including seating, fascia, console, door panels, door pillars, parcel shelf, cantrails, headlining, sunvisors, all stowage compartments and glovebox
 - 24 'standard' colours in single-tone or duotone combinations in four different styles (colour splits) allowing the choice of not just the colour scheme but the mood of the interior – from very elegant to sporty
- Specially developed, flat-cut and leather-bound carpet. Choice of 21 colours to match interior hide
 - Set of four carpet overmats to match cabin carpet, leather-bound and with polished stainless steel fixings
- Choice of 22 seat belt colours with buckles colour-matched to interior hides
- Veneer to fascia, continuous 'ring of wood' waistrails, centre console, rear centre armrest, and front and rear roof consoles in Burr Walnut, Dark Stained Burr Walnut or Piano Black. Seven further veneer options are available as cost options
- Bright finish interior fittings in polished stainless steel
- Unique, glass-effect switchgear

- Driver's instrument panel featuring inverted, aviation-style dials for vehicle and engine speed; supplementary colour screen displaying a driver-configurable choice of navigation prompts, compass, infotainment, vehicle or trip information
- Minor gauges panel in centre fascia with fuel gauge, analogue clock with 'Bentley Motors' inscription and coolant temperature gauge
- Boot trimmed in leather and carpeted to match interior cabin with polished stainless steel sill plate

COMFORT & CONVENIENCE

- Tinted glass sunroof to front compartment with powered Alcantara roller blind (standard in North America and China, cost option in rest of world)
- Front seats with 14-way electrical adjustment, including lumbar support, two memory positions, easy entry/exit function and adjustable heating
 - Front passenger seat – full adjustment from rear cabin. Controls housed in rear centre armrest
 - Two-plus-one rear seat configuration with 8-way electrical adjustment to outboard seats, including lumbar support, two memory positions and adjustable heating
- 4-zone air conditioning including additional rear cabin air conditioning unit with front and rear controls for fan speed and temperature
- Traditional, polished stainless steel bullseye air vents and organ stop controls
- 4-spoke, hide-trimmed, multi-function steering wheel with electric adjustment for tilt and reach with two memory positions, easy entry function and paddleshift
- Twin front centre armrests with hide-lined storage and cordless telephone handset (telephone handset not available in North America and Japan)
- Electrical height adjustment for front seat belts with two memory positions
- Cruise control
- Electrochromatic auto-dimming interior rear-view mirror with on/off button
- Remote-controlled 3-button garage door opener integrated in roof console (standard in North America, cost option in rest of world)
- Rain-sensing windscreen wipers
- Sentinel headlamp functions
- Folding rear centre armrest console with controls for seating and air conditioning and leather-lined stowage compartment with 12V socket
- Twin rear door armrest stowage pockets
- Remote control with dedicated stowage in centre console for rear-seat control of main infotainment system including navigation
- Power windows with one-touch operation and anti-trap protection
- Acoustic glazing with infrared reflective interlayer (except front screen to allow use of mobile communications and toll readers)
- Electrically-operated privacy blinds for rear windows and rear screen, controlled from front or rear cabin with one-shot operation and anti-trap
- Twin adjustable front cupholders
- Twin handcrafted rear cupholders with dedicated stowage
- Front and rear cabin cigar lighters and solid metal ashcans in rear doors
- Hide-lined glovebox with illumination and 12V power socket
- Leather-bound owner's handbook housed in dedicated stowage shelf within glovebox
- Document stowage compartments to front seatbacks

Mulsanne

Technical Specification

INFOTAINMENT

- 8" high-resolution colour screen to display infotainment and vehicle systems information. Automatically concealed behind veneered panel when not in use
- Central Multi Media Interface (MMI) rotary controller with convenience keys for instant access to main system menus of: navigation, telephone, radio, media (including TV when fitted), tone, information and car systems
- 60GB hard disc drive unit fitted in glovebox with 20GB of personal storage space, single-slot DVD drive and 2 x SD card readers. Includes inbuilt Gracenote database that displays artist/album/song names from CDs
- 6 x CD changer fitted in glovebox
- Voice control for all major systems and operations
- Satellite navigation system integrated in vehicle's hard disc, ensuring fast route calculation
 - Four map configurations including 3D topographical maps and city views and day/night display modes
 - 7-digit postcode destination entry, active traffic information (market dependent)
- Mulsanne audio system with 14 speakers, two subwoofers, powered through six channels, with digital sound processing
 - Full iPod® and MP3 player compatibility including full-colour album art display and video playback
 - Digital radio (DAB) or satellite radio (SDARS) depending on market
- Unique, hide-lined iPod® drawer, with integrated connector, designed for storage and connection of multimedia devices. Supplied with two fly-leads with connectors for
 - iPod®/iPhone®
 - Micro USB for other smartphones including BlackBerry®
- Telephone system with Bluetooth® wireless connectivity
- Cordless telephone and cradle mounted in front armrest with SIM card reader in hard drive unit (rSAP) (except North America and Japan)

SAFETY, SECURITY & CHARGING

- Intelligent driver's airbag and front passenger airbag with deactivation facility
- Head and thorax airbags fitted to front and rear seats
 - Fitting to seats rather than car body ensures optimum positioning relative to occupants at all times as the airbag moves with you as you adjust the seat position
- 3-point seat belts to front seats with electric height adjustment and memory function, pyrotechnic pre-tensioners and force limiters
- 3-point seat belts to outer and centre rear seats with pyrotechnic pre-tensioners and force limiters to outer seats
- Rear seat ISOFIX child seat fixings with top tether points
- Direct tyre pressure monitoring system with provision for speed-related warning
- Vehicle immobiliser and interior volumetric alarm system
- Battery conditioner with magnetic trickle charging point concealed in rear registration plate recess
- 12V power sockets located in glovebox, rear centre armrest and boot in addition to cigar lighter sockets in front and rear cabin

OPTIONAL SPECIFICATION

WHEELS & TYRES

- 20" Mulsanne alloy wheel – chromed
- 21" Classic alloy wheel – painted or polished finish
- 21" 2-piece 5-spoke alloy wheel – painted or polished finish
- 21" 2-piece Mulliner alloy wheel – painted or polished finish (available only with Mulliner Driving Specification)
- Space-saving spare wheel*

EXTERIOR FITTINGS

- Flying 'B' radiator mascot
- Chromed radiator shell with bright stainless steel matrix grille
- Bright stainless steel matrix to lower bumper apertures and front wing vents
- Jewel fuel filler cap
- Bright stainless steel door pillar finisher
- Without front licence plate bracket

GLASS & ROOF

- Shade band to tinted windscreen
- Privacy glass to rear screen and rear side windows*
- Glass sunroof to front compartment*

VENEERS

- Birds Eye Maple, Chestnut, Dark Stained Vavona, Dark Stained Burr Walnut, Olive Ash, Piano Black, Sapelli Pommele, Vavona and Tamo Ash

WOODWORK & INLAYS

- Bentley wing badge and chrome inlay strip to waistrails and badge to fascia
- Bentley wing badge to waistrails and fascia
- Contemporary style cross-banding and inlay to fascia and waistrails (only available with Burr Walnut)
- Picture frame-style inlay to waistrails (not available with Piano Black)
- Rear quarter vanity mirrors with veneer surround
- Veneer door panels
- Veneered iPod® drawer and minor gauges panel
- Veneered picnic tables
- Veneered picnic tables with contemporary cross-banding and inlay

SEATING

- Contrast stitching
- Cross-stitching
- Embroidered Bentley emblems to all seats
- Seat piping
- Seat ventilation and massage function to front and rear seats
- Comfort headrests and footrests

STEERING WHEELS & DRIVER CONTROLS

- Drilled alloy sports foot pedals
- Duotone hide trimmed steering wheel (4-spoke)
- Heated single-tone hide trimmed steering wheel (4-spoke)
- Veneered gear lever
- Veneered-rim steering wheel (4-spoke) (available with Chestnut, Burr Walnut, Piano Black, Birds Eye Maple, Dark Stained Burr Walnut and Tamo Ash veneers)

MATS & RUGS

- Deep-pile Wilton carpet mats to front and rear (in lieu of standard overmats)
- Lambswool rugs for front and rear (in addition to standard overmats)

AUDIO & TECHNOLOGY

- DAB radio*
- iPad® specification:
 - Twin electrically-deployed picnic tables with concealed iPad® holders, integrated charging and dedicated space for Apple® wireless keyboards
 - Wi-Fi hotspot (not available in Japan)
- 'Naim™ for Bentley' Premium Audio System consisting of a 2,200W digital amplifier with digital signal processing (DSP) and 20 high-performance speaker drive units. It has Active Audio Enhancement, Automatic Digital Loudness Compensation and Digital Volume Control
- Rear seat entertainment system incorporating two 8" LCD screens to headrests, 20GB hard drive and DVD player to rear armrest surround, two sets of Bluetooth® headphones and remote control
- 6-disc DVD player
- Digital/analogue TV tuner*
- Wi-Fi hotspot (not available in Japan)

COMFORT & CONVENIENCE

- Adaptive cruise control system
- Additional cradle to rear for telephone privacy handset
- Additional information pack in alternative language*
- Ambient interior mood lighting
- Frosted glass, refrigerated bottle cooler with bespoke crystal champagne flutes
- Curtains to rear cabin, available in black or ivory
- First aid kit in addition to warning triangle*
- 2 City umbrellas
- 4 City umbrellas
- Rear view camera

- Remote-controlled garage door opener*
- Side-view camera (only available with rear-view camera)
- Bentley GPS tracking system preparation or full fitment (in addition to standard alarm system)
- Twin illuminated fold down vanity mirrors
- Valet key

MULLINER CATALOGUE

- Personalised embroidery to headrests
- Personalised treadplate plaques

BENTLEY RECOMMENDED SPECIFICATIONS

NB – All recommended specifications complement each other and can be ordered together

MULLINER DRIVING SPECIFICATION

- 21" 2-piece Mulliner alloy wheel – painted or polished finish
- Sports-tuned suspension and steering
- Mulliner Flying 'B' style wing vents
- 'Handcrafted by Bentley Mulliner, England' treadplate plaque
- Diamond quilted hide door panels
- Diamond quilted hide seat covering
- Drilled alloy sports foot pedals
- Indented hide headlining
- Embroidered Bentley emblems to all seats
- Coined finish to interior door handles
- Knurled finish to organ stops
- Knurled sports gear lever

PREMIER SPECIFICATION

- Ambient interior mood lighting
- Bright stainless steel door pillar finisher
- Bright stainless steel matrix to lower bumper apertures and front wing vents
- Flying 'B' radiator mascot
- Hand-stitched leather storage case
- Jewel fuel filler cap
- Rear-view camera
- Remote-controlled garage door opener*
- Seat ventilation and massage function to front and rear seats
- Shade band to tinted windscreen (not available in Japan)
- Valet key
- Veneered iPod® drawer and minor gauges panel

ENTERTAINMENT SPECIFICATION

- Twin electrically-deployed picnic tables with concealed iPad® holders, integrated charging and dedicated space for Apple® wireless keyboards
- 'Naim™ for Bentley' Premium Audio System
- Rear seat entertainment system incorporating two 8" LCD screens to headrests, 20GB hard drive and DVD player to rear armrest surround, two sets of Bluetooth® headphones and remote control
- Wi-Fi hotspot (not available in Japan)

COMFORT SPECIFICATION

- Comfort headrests to rear seats
- Twin footrests to rear cabin
- Twin loose cushions to rear cabin

* Not available in all markets.

Mulsanne Speed Technical Specification

(in addition to Mulsanne specification)



DRIVETRAIN
 Type: 6¾ litre twin-turbocharged V8
 Max Power: 537 PS / 530 bhp / 395 kW at 4,200 rpm
 Max Torque: 1100 Nm / 811 lb/ft at 1,750 rpm
 Cam phasing and variable displacement
 Emission Controls: EU6 and LEVII emissions compliant
 Transmission: 8-speed automatic transmission with electronic shift interface, sport mode and steering wheel-mounted paddleshift
 Driveline: Rear wheel drive

CHASSIS
 • 21" Mulsanne Speed wheels – painted, with 265 x 40 x 105Y tyres

PERFORMANCE
 0-100 km/h 4.9 seconds
 0-160 km/h 11 seconds
 0-60 mph 4.8 seconds
 0-100 mph 11.1 seconds
 Maximum Speed 190 mph / 305 km/h

BODY & EXTERIOR

- Painted radiator shell with dark tint stainless steel matrix grille and 2D Bentley winged 'B' badge
- Dark tint stainless steel matrix grilles to lower bumper apertures
- Dark tint stainless steel matrix to front wing vents
- Solid stainless steel 'Speed' badge fitted to front wing lower brightware
- Polished stainless steel 'Mulsanne' and 'Speed' treadplates
- Rifled exhaust tailpipes
- Twin dark tint Bi-Xenon projector headlamps with LED halo for supplementary main beam, light-sensing auto operation, daytime running light signature and integrated washer jets
- Dark tint floating-ellipse style, LED rear light clusters and discreet high-level stop lamp to rear screen

INTERIOR

- 24 standard colours in single-tone or duotone combinations in five different styles (including the new exclusive colour split for Speed) allowing the choice of not just the colour scheme but the mood of the interior – from very elegant to sporty

OPTIONAL SPECIFICATION
 (in addition to Mulsanne Optional Specification)

WHEELS & TYRES

- 21" Mulsanne Speed wheel – polished
- 21" Mulsanne Speed wheel – dark tint with bright machined accents

WOODWORK & INLAYS

- Piano Black with carbon fibre waistrail inlays

MULSANNE SPEED PREMIER SPECIFICATION

- Ambient interior mood lighting
- Choice of polished or dark tint 21" Mulsanne Speed wheel
- Flying 'B' radiator mascot
- Jewel fuel filler cap
- Rear-view camera
- Remote controlled garage door / electronic gate opener
- Shade band to tinted windscreen
- Twin illuminated fold down vanity mirrors
- Valet key
- Veneered iPod® drawer and minor gauge panel
- Ventilated seats with massage function





Bentley Motors Limited, Pym's Lane, Crewe, Cheshire, CW1 3PL, England. www.BentleyMotors.com
The models presented in this brochure include optional specifications. Specifications, standard equipment, options, fabrics and colours are subject to change without notice. Your Bentley representative will always have the latest information. The name 'Bentley' and the 'B' wings design are registered trademarks of Bentley Motors Limited. Bentley Motors Limited acknowledges the rights of third parties in other trademarks.
The models shown may include European and non-European specifications. © 2015 Bentley Motors Limited. Printed in England.