

2008 GTI Mk V





fig. 01 your fast.  
according to data collected from thousands of respondents nationwide, this is what your fast looks like. and it comes standard with the GTI Mk V. it's completely portable, it works day or night, it makes everything more fun and 9 out of 10 chicks dig it. think of it as your co-pilot, your alter ego, your friend. it's your fast. take good care of it.

how well do you know your fast?  
take the quiz inside, and find out.

inside most of us there is a fast<sup>see fig 01</sup> –  
and the GTI Mk V was designed down  
to the last detail to satisfy it – born on  
the German autobahn this turbocharged  
torqued out wound up 200 horsepower  
GTI is an automobile built by  
enthusiasts for enthusiasts – built for  
a generation that knows the flash of a  
red grille stripe in a rear view mirror  
means move over – this is the car that  
created a category – the original pocket  
rocket lives on – say hello to the GTI Mk V –  
and make friends with your fast\* –



\*if you're interested in the GTI Mk V, you probably don't like being slowed down by anything, even punctuation or

spaces between words. you'll notice we've eliminated most of that from this brochure. you're welcome very much.



if your right foot were made of something other than flesh and bone, it would be made of...

1. the element known as "uranium" – one of the heaviest materials known to science.
2. lead – a classic choice.
3. carbon fiber – durable and lightweight.
4. money, just because.
5. something pretty and stylish.

which of the following would be a dream experience?

1. being strapped to the nose of the space shuttle during launch.
2. being slung off an aircraft carrier in a fighter jet.
3. an afternoon on the autobahn.
4. a brisk bike ride through the fragrant french countryside.
5. lying on the beach with a good book for 14 days straight.



## torque—

when it comes to performance horsepower and 0 to 60 time get all the glory—but your fast craves torque too—torque is a measure of the rotational force that twists the crankshaft—but for those of us without a physics degree it's that kick of g's you feel coming off the line—torque is the unsung hero of performance and the GTI delivers it huge—variable valve timing variable length intake manifold and forced induction translate to a maximum 207 lbft at 1800 to 5000 rpm—plain english it hauls—your fast will eat it up—

←-----  
0—happy in 6.8 seconds

←-----  
alloy pedals  
go ahead, stand on them as hard as you want.

←-----  
xenon headlamps  
high-intensity gas-discharge lamps housed in chip-resistant polycarbonate lenses. great for seeing things in front of you before they go whizzing by.

**strap in your fast—**  
anyone who's ever sat inside a GTI knows there's something about it—  
here's what that something is—it's an interior that's designed with simplicity and purpose—it's a meticulous consideration for every sight, sound and texture—it's leather where there should be leather—aluminum where there should be aluminum—a sport seat that wraps you up—a race car's steering wheel that begs to be gripped with both hands—an unearthly blue glow from the instrument cluster—it's the way it all comes together—experience it yourself and you'll see—there's just something about it—



----->  
**interlagos plaid**  
to the uninitiated, it's a quirky choice.  
to the enthusiast, it's the only choice.

**instrument cluster**  
that unearthly blue glow—it's truly unbelievable how much this little detail enhances the driving experience.  
test-drive after sunset if possible.

----->



----->  
**grab handles**  
most cars have the grab handles mounted above the doors, but the GTI has an extra set on the center console. we think these send a pretty clear message.







when ready to check out at the grocery store, you...

1. panic if even one person is in front of you, leave your cart and exit the store.
2. force however many items you have into the express lane.
3. trim ballast until you're left with only ten items, then hit the express lane.
4. wait patiently in the shortest line.
5. choose the longest line. it's fun to wait.

you think the legal speed limit should be...

1. infinity.
2. what's the speed limit on the autobahn?
3. 90.
4. 75.
5. a nice even 50.

to you, the ideal passenger is...

1. a screamer.
2. weightless.
3. a racing instructor.
4. a caring and conscientious friend.
5. 400 lbs. and eating a bag of nacho cheese flavored chips.

**why sit in front of your computer getting directions -  
when you could be sitting in your GTI's driver seat -  
now you know why the GTI comes with an optional dvd  
navigation system - so you don't waste time - and you  
get to where you are going in true GTI fashion - fast -**



----->

#### steering wheel

three spokes, leather-wrapped. drivers of open-wheel racecars use the flat surfaces at 8:00 and 4:00 to steer with their knees during a victory lap.

note: this is 100% NOT something we recommend.

# GTI

----->  
the badge  
the original GTI badge.  
a small touch. a big statement.

6 on the floor  
standard 6-speed manual transmission.  
it doesn't rhyme. it performs.

----->



**engineering**—  
more than twenty years ago  
a team of scrappy young  
volkswagen engineers  
fashioned a prototype for the  
world's first hot hatch—amazingly  
they did so entirely in their own  
free time—labor of pure passion  
for performance—the result  
of that labor has become an  
automotive legend—a car built  
by enthusiasts for enthusiasts—  
we designed this fifth generation  
GTI to honor that heritage—  
that meant fanatical attention to  
performance above all else—  
starting where it counts—under  
the hood—

**engine**—  
the GTI Mk V is driven by the  
lightweight high-revving big  
breathing turbocharged  
intercooled direct fuel injected  
200-horsepower 2.0 TFSI™—it goes  
from 0 to 60 in just 6.8 seconds  
and tops out at a track speed  
of 130\*—of course we urge you to  
obey all speed limits and traffic  
laws—what else can we say—it's  
economical—it's an ultra-low  
emission vehicle\*\* it's no  
compromise—your fast  
will approve—

←-----

the 2.0 TFSI™  
a turbocharged, intercooled, direct-fuel-injected,  
200hp thing of beauty.



you're running late for the movie, you...

1. wonder if you could actually drive fast enough to reverse the spin of the earth and go back in time.
2. consider it a challenge.
3. take that special shortcut you discovered the last time you were running late.
4. don't mind, nothing good happens in the first 20 minutes, anyhow.
5. stay home. by the time you make it, the film will be over.

while waiting for elevators, you...

1. spew a steady stream of unspeakable profanities.
2. refine your innovative jetpack designs.
3. whack away at the button nonstop.
4. make polite conversation with the fellow standing next to you.
5. take a moment to reflect upon the precious gift of life.



**dsg**—  
 the GTI Mk V comes standard with a 6-speed manual transmission—but it's also available with dsg automatic with tiptronic® and paddleshifting—technically the dsg is two gearboxes with two clutches in one—the transmission can be driven in automatic or tiptronic manual mode—when you shift for when the box does it for you one clutch engages while the other one disengages—all in about 0.2 second—all without ever taking your foot off the accelerator—and the shifting paddles are mounted on the steering column—so in manual mode your hands never leave the steering wheel—just whap whap whap your way through the gearbox—smooth quick accurate shifting—your fast will think it's gone to heaven—

**launch control**—  
 get the optional dsg automatic and you also get launch control—disengage the esp\*—shift into sport mode—then stand on the gas and the brake at the same time—once your GTI revs to 3000 rpm—let off the brake and hold on tight as you tear through the gears with optimum acceleration—that's launch control—use its power for good—

+  
OFF

----->  
 paddles are for spanking the optional dsg automatic transmission with tiptronic® and paddle shifting. whap, whap, whap and you're gone.

\*volkswagen recommends keeping the esp on under most driving conditions.





<-----

#### alloy wheels

17" or 18", forged into a racy horseshoe pattern with great big holes to show off the red brake calipers. hot wheels for the original hot hatch.

#### esp—

faced with a stretch of twisting road  
your fast can get a little rambunctious  
—so we built the GTI with a complex  
system of stability control to help  
you carve corners while keeping all  
four tires stuck to the pavement —the  
electronic stabilization program esp  
constantly monitors the direction  
you're steering in relation to the  
direction the GTI is actually moving  
—when those two directions aren't  
exactly the same the esp kicks  
into action —together with the  
abs it automatically applies brakes  
to the appropriate wheel to  
help compensate for any over  
or understeer —before you ever  
know you're in trouble you're out of  
it —of course we also understand  
there are certain things you just can't  
accomplish while the esp is engaged  
—that's why we built it with an on/off  
switch\* —hey it's your fast —have it  
whichever way you like —

\*volkswagen recommends keeping the esp on under most driving conditions.





**built to autobahn standards of safety**—when you design automobiles for highways without speed limits there's really no such thing as an excessive safety standard—there's a whole culture of engineering expertise helping to keep you protected in the GTI—but just as importantly it's helping to keep everyone else protected too—in the GTI passengers and drivers all enjoy an uncompromising level of safety—and while that certainly says something about the people who make the GTI it also says something pretty great about the people who own them—it says you're not the type of person who's all about me me—it says you're the type who's all about me you you and the other guy too—

← ----

**alphabet brakes**  
abs + ebd + hba = enhanced control

----->

**safety cell construction**  
in the GTI, the passengers and the driver travel inside a rigid cage of laser-welded reinforced steel.



complete the following sentence:  
music while driving...

1. can't compare to the whine of a turbocharger.
2. reminds me that the stereo is sucking precious wattage from the engine.
3. gets me all fired up.
4. starts my toes a-tappin' and my fingers snappin'.
5. is a distraction. driving is difficult enough without it.

you're on a long road trip, and you get hungry. you...

1. suck it up. food just weighs you down, anyway.
2. grab a 6-day-old hot dog and some pork rinds at the next filling station.
3. hit the drive-thru.
4. pull over for a leisurely roadside picnic.
5. vow to never take another long road trip as long as you live.

----->

**a proud bloodline**  
the original pocket rocket.  
a tradition of performance since 1983.





## prevent and preserve safety system

every volkswagen comes standard with the 47 safety features that make up the prevent and preserve safety system. the features work together to both help you avoid an accident and protect you if an accident is unavoidable, and we are constantly updating it because when it comes to your safety, there's always room for improvement. [vw.com/safehappens](http://vw.com/safehappens)

### side curtain protection\*\*

airbags deploy down the roofline from the e-pillar to the c-pillar to help minimize head and upper torso injury in the event of side impact.

**latch**  
lower anchors and tether for children, a standardized child safety-seat system.

**trunk escape handle**  
there's a fluorescent reflector on the inside, so it can be found easily.

**abs, esp, ebd**  
improve handling and prevent compression-induced skidding in slippery conditions.

**alphabet brakes**  
abs + ebd + hba = enhanced control.

**esp**  
complex stability control system helps prevent over- or understeer.

### automatic locking feature

locks automatically engage at 8 mph and unlock automatically should the airbags deploy.

### front-seat safety-belt pre-tensioners with load limiters

in a severe front impact, the surges in the pre-tensioners activate, ridding it of excess safety-belt slack.

**dual front and side airbags\***  
deploy within a tenth of a second.

### optimized head restraints

minimize whiplash injuries from rear-end collisions.

### steering wheel

deformable/collapsible on impact.

### pinch protection on power windows

a closing window reverses if there's any obstruction.

**safety cell construction and anti-intrusion side-door beams**  
the driver and the passengers travel inside a rigid cage of reinforced steel.



**crash-optimized front end**  
designed to divert impact energy away from cab occupants.

\*airbags are supplemental restraints only and will not deploy under all crash circumstances. always use safety belts and seat children only in the rear, using restraint systems appropriate for their size and age.



### roadside assistance

4-year, 50,000-mile, 24-hour protection by cross country automotive services, inc. peace of mind when you're out on the lonely road.

**the4meansmore—**

**it'stimetoreconsiderfourdoorperformance—fourdoorsmean  
easyaccessforanintimateaudienceofperformancegroupies—  
fourdoorsprovidereadyegressforbackseatvictimswithweaker  
constitutions—andfourdoorsmeanyouclimboutfrombehind  
thesteeringwheelonlywhenabsolutelypositivelynecessary—  
they'renotforeveryoneofcourse—butmaybefourdoorsare  
anoptionyourfastcouldgetusedto—**

4





## colors—

the GTI is a performance car down to the core—and everybody knows performance cars don't come in fuchsia—so when talk turned to paint we took the classic route—so you can make a color choice the same way you do everything else—fast—

gray—it's the color of foreboding storm clouds looming on the horizon—  
it's the color of cold unfeeling uncaring stone—it's the color of battleships—  
it's not black—it's not white—it's blight—

black—it shows you spot the bad guys—it's bloodsucking vampire bats  
and unlucky cats and poisonous snakes and spiders and ravens that  
peck your eyeballs out—and it's asphalt—it's a classic—

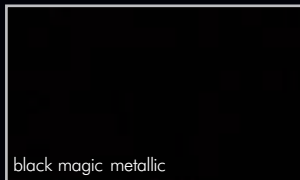
white—as in knuckles—it's blood rushing from faces—it's the color of  
fear—it's the spooky ghost that appears one minute and disappears  
the next—it's surprisingly easy to keep clean depending on the color of  
dirt where you live—and it's always cool—even in the summertime—

silver—it's metal—it's polished—it's a full suit of armor and a broadsword—  
if it made a noise it would go shahshing—it's an unidentified flying  
object—it's the color of quick—

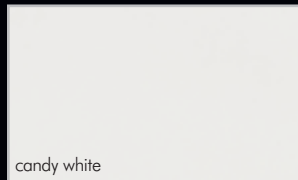
red—it's a warning—it's the marking on a dangerous animal—it's a  
nasty burn—it's the color of guts—and deep down it's whatever sports  
car really wants to be—it's timeless for good reason—it's always hot—



united gray metallic



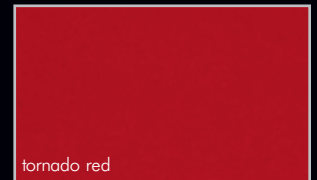
black magic metallic



candy white



reflex silver metallic (special order)

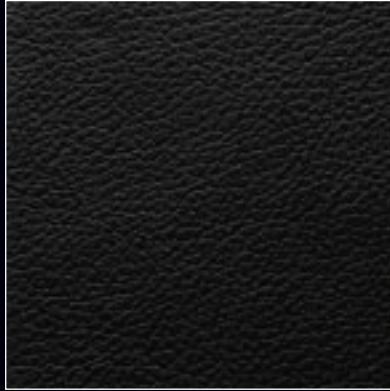


tornado red

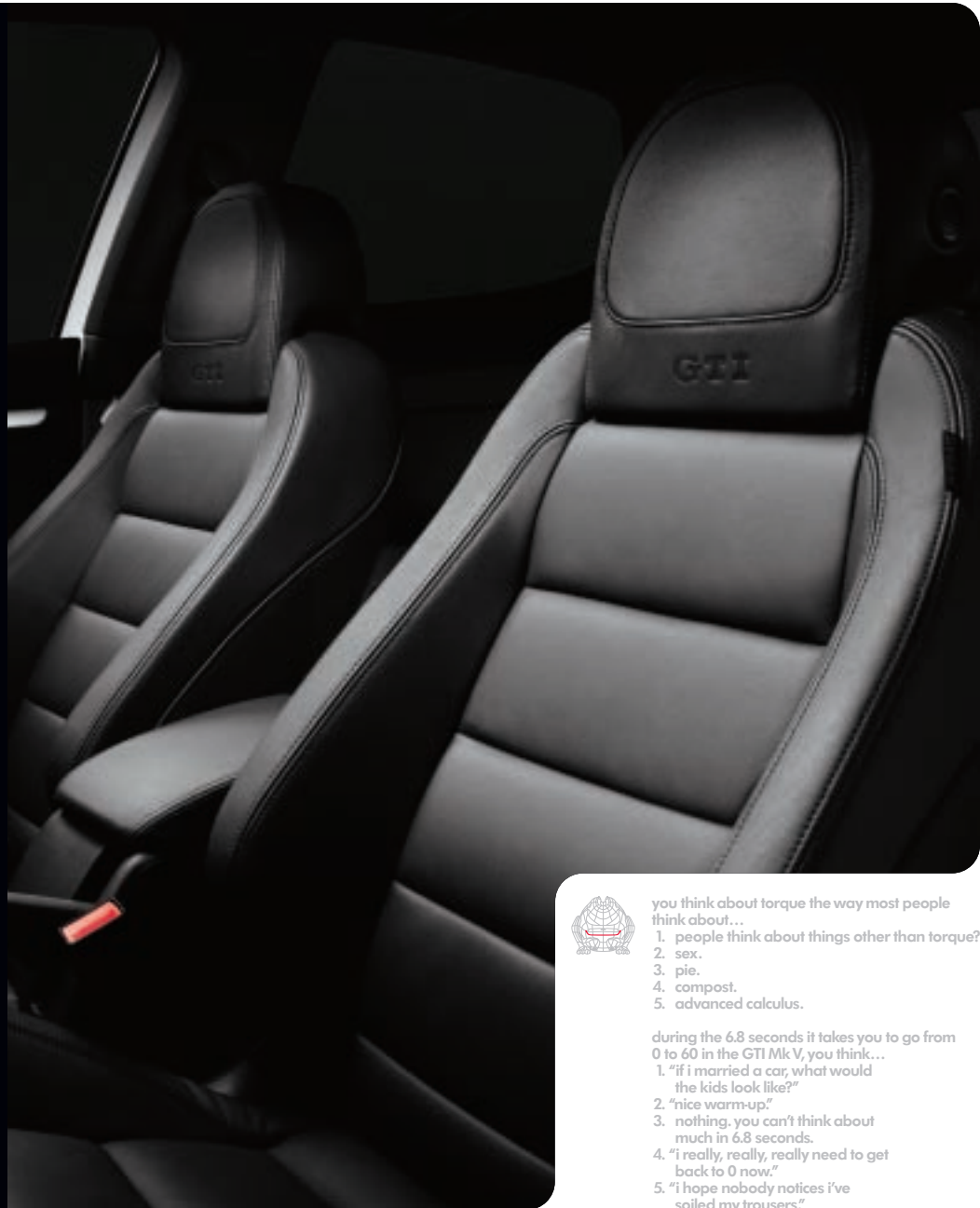




**interior fabrics –**  
the GTI Mk V sport seats are available  
in leather or interlagos plaid fabric –  
that's right – plaid – it's a GTI thing –



**sport seats**  
with special side bolsters for support, these seats sit  
you up straight and make you pay attention. available  
in standard interlagos plaid seats or hand-stitched leather  
top sport seats (pictured).



you think about torque the way most people  
think about...

1. people think about things other than torque?
2. sex.
3. pie.
4. compost.
5. advanced calculus.

during the 6.8 seconds it takes you to go from  
0 to 60 in the GTI Mk V, you think...

1. "if i married a car, what would  
the kids look like?"
2. "nice warm-up."
3. nothing, you can't think about  
much in 6.8 seconds.
4. "i really, really, really need to get  
back to 0 now."
5. "i hope nobody notices i've  
soiled my trousers."



1.



2.



3.



4.



5.



6.



7.



8.



9.

**vwdesigns** –  
 weputalotintotheGTIto  
 makeyourfasthappy –butwe  
 also understandthatyourfastis  
 differentfromeveryoneelse’s –  
 maybeyou’relookingfor  
 optionsonthealloywheels –  
 maybeyou’reintoground  
 effects –ormaybeyouneed  
 someextrariggingforwhen  
 yougofreeridinguponthenorth  
 shore –that’swhywsetup  
 drivergear.vw.com –think  
 ofitasapersonaloutfitterfor  
 yourveryuniquebrandoffast –

←-----

1. body kit (includes front spoiler, side skirts and rear valance)

←-----

2. 17" exis wheel

←-----

3. 6-speed golf ball shift knob

←-----

4. 18" vision wheel

←-----

5. base carrier bars and barracuda® bike holder (upright – base carrier bars can fit 3 barracuda® bike holders)

←-----

6. 18" karthoum wheel (in silver)

←-----

7. GTI monster mats™ and carpeted mat with red GTI logo

←-----

8. 17" activa wheel

←-----

9. gorilla gear™ trunk liner and organizer blocks

**keeping your fast happy—keeping you happy—**  
 when you tear out of our lot with a new GTI and a nice happy  
 fast our goal is to make sure your fast stay happy—which  
 means making sure you stay happy—which means servicing  
 your GTI like it was our very own—it'll always be one of our little  
 guys after all—so go have fun with your GTI—we'll be here  
 when you need us—

**basic limited warranty—**  
 every GTI comes with a bumper to bumper new vehicle  
 limited warranty for 4 years or 50,000 miles whichever  
 comes first—

**powertrain limited warranty—**  
 the Volkswagen powertrain limited warranty provides  
 5 years or 60,000 miles of protection whichever comes first—

**limited warranty against  
 corrosion perforation—**  
 a fully galvanized steel body means we can offer you a  
 12 year unlimited mileage limited warranty against  
 corrosion perforation—

**roadside assistance—**  
 the GTI has a 24 hour a day roadside assistance package for  
 4 years or 50,000 miles provided by cross country automotive  
 services inc—wherever you go we got your back—

## exterior specs

2-door/4-door

|  |   |
|--|---|
| roof-mounted "fin-type" satellite radio antenna  | s |
| dual chrome exhaust pipes  | s |
| anti-intrusion side-door beams   | s |
| black front grille with honeycomb mesh and red surrounding strip   | s |
| high-intensity gas-discharge headlamps (xenon)<br>with clear, lightweight, chip-resistant polycarbonate lenses   | s |
| halogen foglights integrated into front bumper   | s |
| side blinkers integrated into side exterior mirrors  | s |
| driver- and passenger-side power exterior mirrors, heatable  | s |
| power glass sunroof with tilt, slide, tinted glass, manual sunshade, pinch protection<br>and driver-door power-lock-operated convenience closing feature | p |
| rear spoiler located above rear hatch  | s |
| red front and rear brake calipers  | s |
| 225/45 r17 h, summer performance tires   | s |
| 225/45 r17 h, all-season performance tires   | o |
| 225/40 r18 h, summer performance tires   | o |
| temporary-use spare wheel and all-season tire  | s |
| 7j x 17" alloy wheels  | s |
| 7.5j x 18" alloy wheels  | o |
| anti-theft wheel locks   | s |
| windshield wipers with variable intermittent wipe feature  | s |
| heated windshield washer nozzles, front  | p |

## interior specs

|  |   |
|--|---|
| manual single-zone climate control (climatic), cfc-free  | s |
| anti-theft vehicle alarm system for doors, hood, trunk lid, radio and starter,<br>with warning led in door-top sill and with audible and visual activation   | s |
| immobilizer theft-deterrent system   | s |
| cruise control   | s |
| brake-pad wear indicator   | s |
| illumination of controls and gauges—blue, with red indicators  | s |
| multi-function trip computer featuring trip time, trip length, average trip speed,<br>average trip fuel consumption, current fuel consumption, miles to empty, compass,<br>radio station display and personalizing functions | s |
| folding keys (2) with radio-frequency remote transmitter for central locking, eyelet<br>valet key  | s |
| remote central power-locking system with selective unlocking   | s |
| aluminum alloy interior trim   | s |
| power outlet (sae size) in trunk   | s |
| power outlet (sae size) in center console  | s |
| 10-speaker in-dash mp3-readable 6-disc cd stereo with aux input, am/fm and<br>SIRIUS® satellite radio, theft-deterrent warning light and coding system   | s |

s = standard o = optional p = available with package



## interiorspecs

2-door/4-door

|  |                |
|--|----------------|
| navigation system with visual and audible commands through color center-console display and through multi-function onboard computer display in instrument cluster, 6-disc cd changer or ipod dock located in armrest between front seats | o <sup>1</sup> |
| auxiliary input jack   | s              |
| driver and front-passenger front-airbag supplemental restraint system  | s              |
| driver and front-passenger side-thorax-airbag supplemental restraint system  | s              |
| side curtain protection <sup>®</sup>   | s              |
| rear-impact optimized head restraints, driver and front-passenger  | s              |
| emergency locking retractors for all seating positions   | s              |
| front-seat safety-belt pre-tensioners with load limiters   | s              |
| height-adjustable front 3-point safety belts   | s              |
| rear 3-point safety belts, all 3 seating positions   | s              |
| rear-passenger side-thorax-airbag supplemental restraint system  | na/o           |
| rear outboard seat safety-belt pre-tensioners with load limiters   | na/o           |
| latch (lower anchors and tethers for children), child-seat lower attachment points and tether rear-outboard seating positions  | s              |
| buckle switch (sensor that deploys airbag, depending on safety-belt use)   | s              |
| interlock feature, center rear safety belts cannot be extended unless seatback is in fully locked position   | s              |
| 8-way manually adjustable sport front seats: fully reclining, height adjustable  | s              |
| top sport front seats, lumbar support, 4-way electrically adjustable for driver and front-passenger seats, heated front seats, anthracite leather seating surfaces   | p              |
| rear-seat head restraints, height adjustable, all seating positions  | s              |
| 60/40 split-folding rear seat with center armrest and pass-through   | s              |
| 3-spoke leather-wrapped multi-function sport steering wheel, with audio controls (includes paddle shifters on both sides of steering wheel when equipped with optional 6-speed automatic direct-shift gearbox)                           | s              |
| height-adjustable and telescoping steering column  | s              |
| steering wheel deformable/collapsible upon impact  | s              |
| theft-deterrent steering column  | s              |
| alloy pedals   | s              |
| chrome interior door handles   | s              |
| removable storage divider  | s              |
| interlagos-plaid sport-seat fabric   | s              |
| pollen filter  | s              |
| power windows with pinch protection and automatic one-touch feature, operable from driver side only  | s              |



The ideas in this brochure are new, the paper however is recycled.  
Please remember to recycle. The brochure. Not the ideas in it. Thanks.

## optionprogram

2-door/4-door

|                         |  |                |
|-------------------------|--|----------------|
| <b>autobahn package</b> | power sunroof  | p              |
|                         | top sport front seats  |                |
|                         | leather seats  |                |
|                         | heatable front seats and heated washer nozzles                     |                |
|                         | premium sound system   |                |
|                         | <b>options:</b>  |                |
|                         | 6-speed automatic direct-shift gearbox with tiptronic <sup>®</sup> | o              |
|                         | 225/45 r17 h all-season tires (no charge)                          | o              |
|                         | 7.5j x 18" alloy wheels  |                |
|                         | with 225/40 r18 92y xl summer tires                                | o              |
|                         | 7.5j x 18" alloy wheels  |                |
|                         | with 225/40 r18 92h xl summer tires                                | o              |
|                         | navigation system with ipod dock                                   |                |
|                         | located in front armrest   | o <sup>1</sup> |
|                         | navigation system with 6-disc cd changer                           |                |
|                         | located in front armrest   | o <sup>1</sup> |

## technicalspecs

### engine

|  |   |
|--|---|
| 16-valve, dohc, in-line 4-cylinder turbocharged engine with intercooler and direct fuel injection  | s |
| displacement: 121.0 in <sup>3</sup> 1,984 cm <sup>3</sup>  | s |
| compression ratio: 10.5:1  | s |
| horsepower (sae) @ rpm: 200 @ 5,100–6,000 (147 kw @ 5,100–6,000)   | s |
| maximum torque, lbs-ft @ rpm: 207 @ 1,800–5,000 (280 nm @ 1,800–5,000)   | s |
| fuel requirement: premium unleaded (95 ron) recommended for maximum performance, (unleaded regular (91 ron) as alternative with slight reduction in performance) | s |

### engine design

|   |   |
|---|---|
| arrangement: front mounted, transverse  | s |
| cylinder block: cast iron   | s |
| crankshaft: 5 main bearings   | s |
| cylinder head: aluminum alloy   | s |
| valve train: dual overhead camshaft, belt driven, 4 valves per cylinder, maintenance-free hydraulic lifters | s |
| fuel/air supply: fully electronic engine management with drive-by-wire throttle control, fsi <sup>®</sup>   | s |

### body, chassis and suspension

|  |   |
|--|---|
| type: uni-body construction, bolt-on front fenders   | s |
| front axle: sport-tuned independent mcpherson strut suspension with aluminum subframe and stabilizer bar | s |
| rear axle: sport-tuned independent 4 link suspension with stabilizer bar                                 | s |
| drag coefficient: .32  | s |

### drivetrain

|                   |   |
|-------------------|---|
| front-wheel drive | s |
|-------------------|---|

## technicalspecs

2-door/4-door

### steering

electromechanical power steering with variable assistance and active return s

### brakes

4-wheel disc brakes, front vented s

abs: 4-wheel anti-lock braking system s

ebd: electronic brake-pressure distribution s

hba: hydraulic brake assist s

### traction control

asr: anti-slip regulation s

edl: electronic differential lock s

ebs: engine brake assist s

esp: electronic stabilization program s

### transmission

6-speed manual transmission s

6-speed automatic direct-shift gearbox with tiptronic® and sport mode o

cable shift mechanism, manual transmission only s

clutch-starter interlock for manual transmission, vehicle will not start if clutch is not depressed s

hydraulic clutch for manual transmission s

### interior volume—sae

|                  |                      |                    |                      |                    |
|------------------|----------------------|--------------------|----------------------|--------------------|
| seating capacity | 5                    |                    |                      |                    |
| passenger volume | 94.2 ft <sup>3</sup> | 2.7 m <sup>3</sup> |                      |                    |
| cargo volume     | 15.1 ft <sup>3</sup> | 0.4 m <sup>3</sup> |                      |                    |
|                  | front                |                    | rear                 |                    |
| volume           | 51.3 ft <sup>3</sup> | 1.5 m <sup>3</sup> | 42.9 ft <sup>3</sup> | 1.2 m <sup>3</sup> |
| head room        | 39.3 in              | 998 mm             | 38.5 in              | 979 mm             |
| shoulder room    | 54.7 in/54.8 in      | 1,390 mm           | 54.6 in/53.1 in      | 1,386 mm           |
| leg room         | 41.2 in              | 1,046 mm           | 35.3 in              | 896 mm             |

### dimensions

|                  |          |          |
|------------------|----------|----------|
| wheelbase        | 101.5 in | 2,578 mm |
| front track      | 60.4 in  | 1,534 mm |
| rear track       | 59.7 in  | 1,516 mm |
| length           | 165.8 in | 4,210 mm |
| width            | 69.3 in  | 1,759 mm |
| height           | 58.4 in  | 1,484 mm |
| ground clearance | 5.6 in   | 143 mm   |

### fuel consumption\*

|           |          |           |
|-----------|----------|-----------|
|           | manual   | automatic |
| city      | 21 mpg   | 22 mpg    |
| highway   | 29 mpg   | 29 mpg    |
| fuel tank | 14.5 gal | 55.0 l    |

\*EPA Estimates. Your fuel consumption may vary.

s = standard o = optional p = available with package

## warranty

2-door/4-door

12-year/unlimited-distance limited warranty against corrosion perforation s

5-year/60,000-mile (whichever occurs first) powertrain limited warranty s

4-year/50,000-mile (whichever occurs first) new vehicle limited warranty wear-and-tear items and adjustments excluded after initial 12 month / 12,000 miles (whichever occurs first) s

## roadsideassistance

4-year/50,000-mile, 24-hour roadside assistance provided by cross country automotive inc. s

<sup>1</sup> available only in combination with "autobahn package"

©2007 Volkswagen of America, Inc. Printed in the U.S.A. Volkswagen of America, Inc., believes the information and specifications in this brochure to be correct at the time of printing. Specifications, standard features, options, fabrics, and colors are subject to change without notice. Some features may be unavailable when your vehicle is built. Some vehicles are pictured with options that may be available at extra cost or may not be available on some models. Ask your dealer about availability of options, and verify that the vehicle you ordered includes the equipment you ordered. Tires are supplied and warranted by their manufacturer. High-performance tires are designed for optimum performance and handling in warm climates. They are not suitable for cold, snowy, or icy weather conditions. If you drive under those circumstances, you should equip your vehicle with all-season or winter tires, which offer better traction under those conditions. We suggest you use the recommended winter or all-season tire specified for your car or its equivalent. These high-performance tires also have a lower aspect ratio that aids performance and handling; however, in order to avoid tire, rim, or vehicle damage, it is important that the inflation pressure be regularly checked and maintained at optimum levels. Please also remember in making your selection that, while these tires deliver responsive handling, they may ride less comfortably and make more noise than other choices. Finally, these tires may wear more quickly than other choices. "Volkswagen," "GT," "DSG," and the Volkswagen logo are registered trademarks of Volkswagen AG. "TFSI" is a trademark of AUDI AG. "Tiptronic" is a registered trademark of Dr. Ing. h.c. F. Porsche AG. "SIRIUS Satellite Radio" is a registered trademark of SIRIUS Satellite Radio, Inc. "Barracuda" is a registered trademark of Mont Blanc. For further information regarding any Volkswagen model, please call 1-800-DRIVE-VW or just look us up at vw.com. Before we sign off, remember, please don't drink and drive, and always remember to obey traffic laws.



**Volkswagen**  
Carbon Neutral Project™

The Carbon Neutral Project is a partnership with Carbonfund.org designed to start addressing the issue of carbon emissions. With the help of Carbonfund.org, we'll be making it easy for anyone who owns a Volkswagen to determine their output and take action toward offsetting them. The contributions of the full Volkswagen community are put toward re-forestation of the Lower Mississippi Alluvial Valley (aka - The VV Forest). Learn more at VW.com.

s = standard o = optional p = available with package

**type** 11–20

**A**

your fast is frightening, and it should probably be locked away forever. we could beg and plead with you not to purchase the GTI Mk V. but frankly, we think our admonitions might make you want one even more. we can only hope that your friends and loved ones will be able to talk some sense into you before you enter into an unhealthy relationship with this automobile.

**type** 21–30

**B**

your fast is hearty, robust and aggressive. when we built the GTI Mk V, we did it for a fast just like yours. after all, your fast is just like ours. your fast is an enthusiast. a purist. your fast appreciates driving as a complete sensory experience. with proper care and feeding, you and your fast will enjoy a mutually beneficial relationship for years to come.

**type** 31–40

**C**

your fast sits somewhere right on the apex of the fast bell curve. with just a bit more exercise and attention, your fast could grow to be a formidable and powerful one—a fast to be reckoned with. but deprived of torque or horsepower, your fast could just as easily wither into a sleepy decline. GTI or no GTI, the future of your fast lies in your hands.

**type** 41–50

**D**

your fast is severely atrophied. can the GTI Mk V help? it's possible. but you need to take action now. you've got to be willing to put in the miles, carve the hard corners and work the transmission like you've never worked a transmission before. in time, we're confident your fast can make a complete recovery and lead a happy, healthy life.

**type** 51+

**F**

you are the rare case. your fast is completely nonexistent. many grandmothers have more of a fast than you. there's not a single sluggish bone in your body that would be interested in the GTI Mk V. in fact, we suggest you consider some other mode of transportation entirely. perhaps one of those electric mobility scooters with a nice basket on the front for your needlepoint.

<-----

so how well do you know your fast?  
to tally your score, simply add together the numbers  
corresponding to your answers. then, refer to the key.









**makefriendswithyourfast**