



makefriendswithyourfast

GTI Mk V





fig. 01 your fast.
according to data collected from thousands of respondents nationwide, this is what your fast looks like. and it comes standard with the GTI Mk V. it's completely portable, it works day or night, it makes everything more fun and 9 out of 10 chicks dig it. think of it as your co-pilot, your alter ego, your friend. it's your fast. take good care of it.

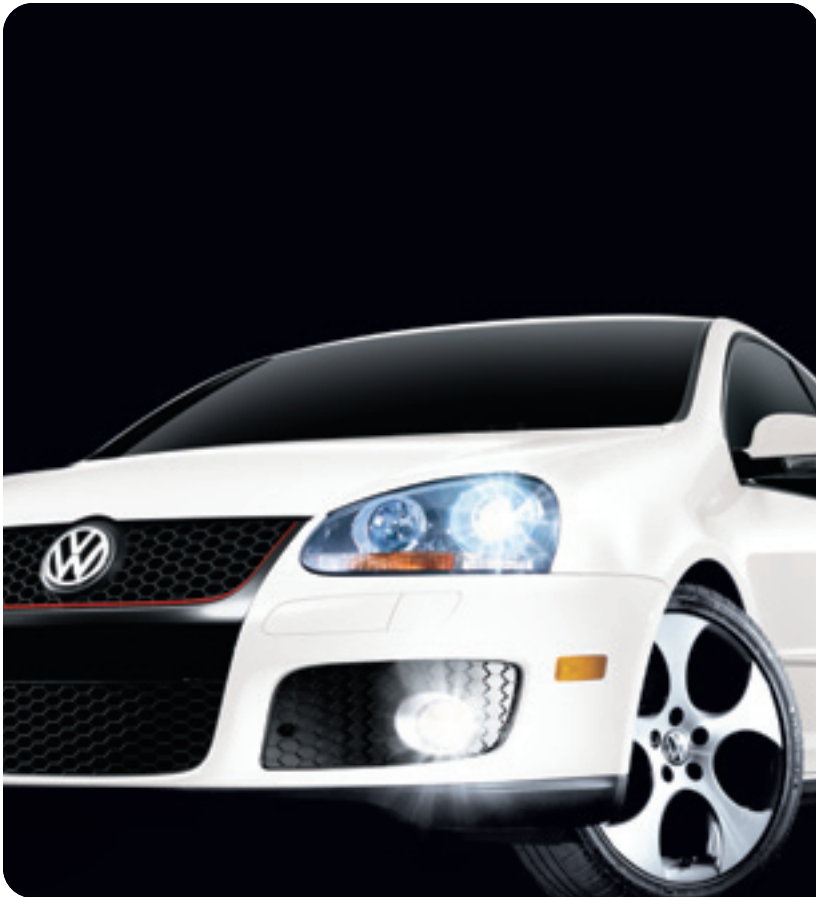
how well do you know your fast?
take the quiz inside and find out.

inside most of us there is a fast^{see fig. 01} –
and the GTI Mk V was designed down
to the last detail to satisfy it – born on
the German autobahn this turbocharged
torqued out wound up 200 horsepower
GTI is an automobile built by
enthusiasts for enthusiasts – built for
a generation that knows the flash of a
red grille stripe in a rear view mirror
means move over – this is the car that
created a category – this is the return
of the original pocket rocket – say hello
to the GTI Mk V – and make friends
with your fast* –



* if you're interested in the GTI Mk V you probably don't like being slowed down by anything, even punctuation or

spaces between words. you'll notice we've eliminated most of that from this brochure. you're welcome very much.



if your right foot were made of something other than flesh and bone it would be made of:

1. the element known as "uranium" – one of the heaviest materials yet known to science.
2. lead – a classic choice.
3. carbon fiber – durable and lightweight.
4. money, just because.
5. something pretty and stylish.

which of the following would be a dream experience?

1. being strapped to the nose of the space shuttle during launch.
2. being slung off an aircraft carrier in a fighter jet.
3. an afternoon on the autobahn.
4. a brisk bike ride through the fragrant french countryside.
5. lying on the beach with a good book for 14 days straight.



torque –

when it comes to performance horsepower and 0 to 60 time get all the glory – but your fast craves torque too – torque is a measure of the rotational force that twists the crankshaft – but for those of us without a physics degree it's that kick of g's you feel coming off the line – torque is the unsung hero of performance and the GTI delivers it huge – variable valve timing variable length intake manifold and forced induction translate to a maximum 207 lbft at 1800 to 5000 rpm – plain english it hauls – your fast will eat it up –

←-----

0-happy in 6.8 seconds

←-----

alloy pedals

go ahead, stand on them as hard as you want.

←-----

xenon headlamps

high-intensity gas-discharge lamps housed in chip-resistant polycarbonate lenses. great for seeing things in front of you before they go whizzing by.



----->
interlagos plaid
to the uninitiated, it's a quirky choice.
to the enthusiast, it's the only choice.

instrument cluster
that unearthly blue glow—it's truly unbelievable how
much this little detail enhances the driving experience.
test-drive after sunset if possible.



strap in your fast—
anyone who's ever sat inside a GTI
knows there's something about it—
here's what that something is—it's
an interior that's designed with
simplicity and purpose—it's a
meticulous consideration for
every sight, sound and texture—
it's leather where there should be
leather—aluminum where there
should be aluminum—a sport seat
that wraps you up—a race car's
steering wheel that begs to be
gripped with both hands—an
unearthly blue glow from the
instrument cluster—it's the way it
all comes together—experience it
yourself and you'll see—there's
just something about it—

----->
grab handles
most cars have the grab handles mounted above
the doors, but the GTI has an extra set on the center
console. we think these send a pretty clear message.





when ready to check out of the grocery store, you...

1. panic if even one person is in front of you, leave your cart and exit the store.
2. force however many items you have into the express lane.
3. trim ballast until you're left with only ten items, then hit the express lane.
4. wait patiently in the shortest line.
5. choose the longest line. it's fun to wait.

you think the legal speed limit should be...

1. infinity.
2. what's the speed limit on the autobahn?
3. 90.
4. 75.
5. a nice even 50.

to you, the ideal passenger is...

1. a screamer.
2. weightless.
3. a racing instructor.
4. a caring and conscientious friend.
5. 400 lbs. and eating a bag of nacho cheese flavored chips.



----->

steering wheel

three spokes, leather-wrapped. drivers of open-wheel race cars use the flat surfaces at 8:00 and 4:00 to steer with their knees during a victory lap.

note: this is 100% NOT something we recommend.

GTI

----->
the badge
the original GTI badge is back.
a small touch. a big statement.

6 on the floor
standard 6-speed manual transmission.
it doesn't rhyme. it performs.

----->



engineering—
more than twenty years ago
a team of scrappy young
volkswagen engineers
fashioned a prototype for the
world's first hot hatch—amazingly
they did so entirely on their own
free time—labor of pure passion
for performance—the result
of that labor has become an
automotive legend—a car built
by enthusiasts for enthusiasts—
we designed this fifth generation
GTI to honor that heritage—
tous that meant fanatical attention to
performance above all else—
starting where it counts—under
the hood—

engine—
the GTI Mk V is driven by a
lightweight high-revving big
breathing turbocharged
intercooled direct fuel injected
200 horsepower 2.0—it goes 0 to 60
in just 6.8 seconds and tops out
at a track speed of 130*—of course
we urge you to obey all speed
limits and traffic laws—what else
can we say—it's economical—
it's an ultra-low emission vehicle**—
it's no compromise—your fast
will approve—

----->

the 2.0t
a turbocharged, intercooled, direct fuel-injected,
200 hp thing of beauty.

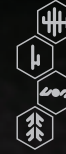


you're running late for the movie, you...

1. wonder if you could actually drive fast enough to reverse the spin of the earth and go back in time.
2. consider it a challenge.
3. take that special shortcut you discovered the last time you were running late.
4. don't mind, nothing good happens in the first 20 minutes anyhow.
5. stay home, by the time you make it the film will be over.

while waiting for elevators you...

1. spew a steady stream of unspeakable profanities.
2. refine your innovative jet pack designs.
3. whack away at the button non-stop.
4. make polite conversation with the fellow standing next to you.
5. take a moment to reflect upon the precious gift of life.



dsg—
the **GTI** **kV** comes standard with a 6-speed manual transmission—but it's also available with dsg automatic with tiptronic® and paddle shifting—technically the dsg is two gearboxes with two clutches in one—the transmission can be driven in automatic or tiptronic manual mode but in either case the next gear up and down is always preselected—when you shift for when the box does it for you one clutch engages while the other one disengages—all in about 0.2 seconds—all without ever taking your foot off the accelerator—and the shifting paddles are mounted on the steering column—so in manual mode your hands never leave the steering wheel—just whap whap whap your way through the gearbox—smooth quick accurate shifting—your fast will think it's gone to heaven—

launch control*—
get the optional dsg automatic and you also get launch control—disengage the esp** shift into sport mode—then stand on the gas and the brake at the same time—once your GTI revs to 2500 rpms—let off the brake and hold on tight as you tear through the gears with optimum acceleration—that's launch control—use its power for good—

----->
paddles are for spanking optional dsg automatic transmission with tiptronic® and paddle shifting. whap, whap, whap and you're gone.

*delayed introduction. **volkswagen recommends keeping esp on under most driving conditions.



<-----

alloy wheels

17" or 18", forged into a racy horseshoe pattern with great big holes to show off the red brake calipers. hot wheels for the original hot hatch.

esp—

faced with a stretch of twisting road
your fast can get a little rambunctious
—so we built the GTI with a complex
system of stability control to help
you carve corners while keeping all
four tires stuck to the pavement — the
electronic stabilization program esp
constantly monitors the direction
you're steering in relation to the
direction the GTI is actually moving
—when those two directions aren't
exactly the same the esp kicks
into action — together with the
abs it automatically applies brake
to the appropriate wheel to
help compensate for any over
or understeer — before you ever
know you're in trouble you're out of
it — of course we also understand
there are certain things you just can't
accomplish while the esp is engaged
— that's why we built it with an on/off
switch* — hey it's your fast — have it
whichever way you like —

*volkswagen recommends keeping esp on under most driving conditions.



built to autobahn standards of safety – when you design automobiles for a highway system without speed limits there's really no such thing as an excessive safety standard – there's a whole culture of engineering expertise helping to keep you protected in the GTI – but just as importantly it's helping to keep everyone else protected too – in the GTI passengers and drivers all enjoy an uncompromising level of safety – and while that certainly says something about the people who make the GTI it also says something pretty great about the people who own them – it says you're not the type of person who's all about me me – it says you're the type who's all about me you you and the other guy too –

← ----

alphabet brakes
abs + ebd + hba = enhanced control

----->

safety cell construction
in the GTI, passengers and driver travel inside a rigid cage of laser welded reinforced steel.



complete the following sentence:
music while driving...

1. can't compare to the whine of a turbocharger.
2. reminds me that the stereo is sucking precious wattage from the engine.
3. gets me all fired-up.
4. starts my toes-a-tappin' and my fingers snappin'.
5. is a distraction, driving is difficult enough without it.

you're on a long road trip and you get hungry, you...

1. suck it up, food just weighs you down anyway.
2. grab a six-day-old hot dog and some park rinds at the next filling station.
3. hit the drive-thru.
4. pull over for a leisurely roadside picnic.
5. vow to never take another long road trip as long as you live.

----->

a proud bloodline

a tradition of performance since 1983

the original pocket rocket is back.



side curtain protection**

airbags deploy down the roofline from the a-pillar to the c-pillar to help minimize head and upper torso injury in the event of side impact.

automatic locking feature

locks automatically engage at 8 mph and unlock automatically should the airbags deploy.

front seat safety belt pre-tensioners with load limiters

in a severe front impact, the pretensioners in the pre-tensioners explode reeling in excess safety belt slack.

rear impact optimized head restraints—front standard seats help minimize whiplash injuries from rear-end collisions.

pinch-protection on power windows

a closing window reverses if there's any obstruction.

steering wheel
deformable/collapsible
on impact.

safety cell construction and anti-intrusion side door beams driver and passengers travel inside a rigid cage of reinforced steel.

latch
lower anchors and tether for children, a standardized child-safety seat anchoring system.

dual front and side airbags*
deploy within a tenth of a second

asr, edl, eba
improve handling and prevent compression-induced skidding in slippery conditions.

alphabet brakes
abs + ebd + hba = enhanced control

esp
complex stability control system helps prevent over or understeer.

crash optimized front and rear ends
designed to divert impact energy away from cab occupants.

*airbags are supplemental restraints only and will not deploy under all accident scenarios. always use safety belts and seat children only in the rear, using restraint systems appropriate for their size and age.



roadside assistance

4-year, unlimited mileage, 24-hour protection by road america. peace-of-mind when you're out on the lonely road.

the4meansmore—

it'stimetoreconsiderfourdoorperformance—fourdoorsmean
easyaccessforanintimateaudienceofperformancegroupies—
fourdoorsprovidereadyegressforbackseatvictimswithweaker
constitutions—andfourdoorsmeanyouclimboutfrombehind
thesteeringwheelonlywhenabsolutelypositivelynecessary—
it'snotforeveryoneofcourse—butmaybefourdoorsisanoption
yourfastcouldgetusedto—

4



colors—

the GTI is a performance car down to the core—and everybody knows performance cars don't come in fuchsia—so when talk turned to paint we took the classic route—so you can make a color choice the same way you do everything else—fast—

gray—it's the color of foreboding storm clouds looming on the horizon—it's the color of cold unfeeling uncaring stone—it's the color of battleships—it's not black—it's not white—it's blight—

black—it shows you spot the bad guys—it's bloodsucking vampire bats and unlucky cats and poisonous snakes and spiders and ravens that peck your eyeballs out—and it's asphalt—it's a classic—

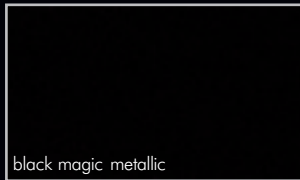
white—as in knuckles—it's blood rushing from faces—it's the color of fear—it's the spooky ghost that appears one minute and disappears the next—it's surprisingly easy to keep clean depending on the color of dirt where you live—and it's always cool—even in the summertime—

silver—it's metal—it's polished—it's a full suit of armor and a broadsword—if it made an noise it would go shah-shing—it's an unidentified flying object—it's the color of quick—

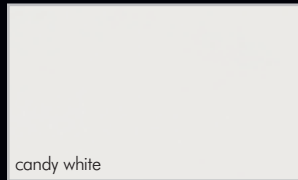
red—it's a warning—it's the marking on a dangerous animal—it's a nasty burn—it's the color of guts—and deep down it's whatever sports car really wants to be—it's timeless for good reason—it's always hot—



united gray metallic



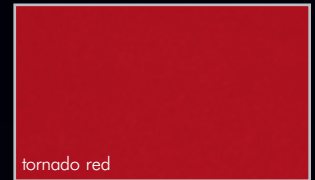
black magic metallic



candy white



reflex silver metallic

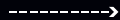
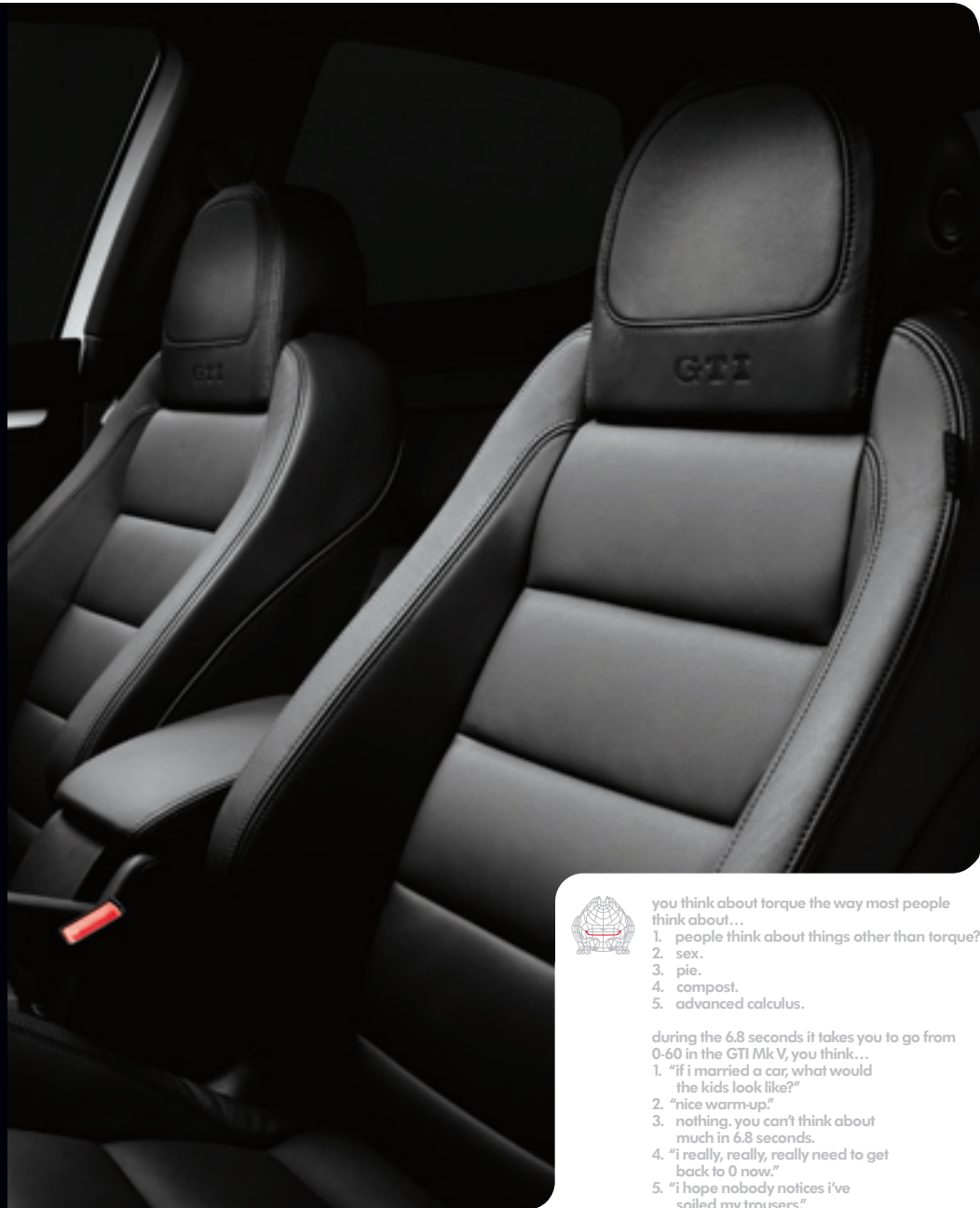
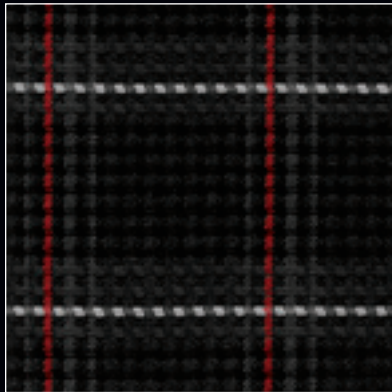
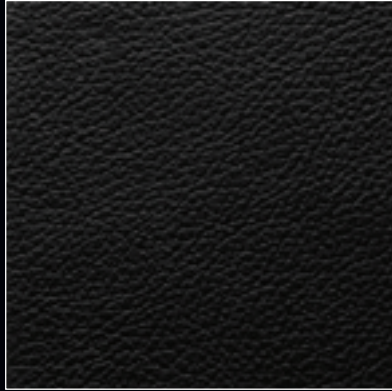


tornado red





interior fabrics –
 the GTI Mk V sport seats are available
 in leather or interlagos plaid fabric –
 that's right – plaid – it's a GTI thing –



sport seats
 with special side bolsters for support, these seats sit
 you up straight and make you pay attention. available
 in standard interlagos plaid seats or hand stitched leather
 top sport seats (pictured).



you think about torque the way most people
 think about...

1. people think about things other than torque?
2. sex.
3. pie.
4. compost.
5. advanced calculus.

during the 6.8 seconds it takes you to go from
 0-60 in the GTI Mk V, you think...

1. "if i married a car, what would
 the kids look like?"
2. "nice warm-up."
3. nothing. you can't think about
 much in 6.8 seconds.
4. "i really, really, really need to get
 back to 0 now."
5. "i hope nobody notices i've
 soiled my trousers."



1.



2.



3.



4.



5.



6.



7.



8.



9.

drivergear.vw.com –
 we put a lot into the GTI to
 make you fast happy – but we
 also understand that your fast is
 different from everyone else's –
 maybe you're looking for
 options on the alloy wheels –
 maybe you're into ground
 effects – or maybe you need
 some extra rigging for when
 you go freeriding upon the north
 shore – that's why we set up
drivergear.vw.com – think
 of it as a personal outfitter for
 your very unique brand of fast –

←-----

1. body kit (includes front spoiler, side skirts and rear valance)

←-----

2. 17" exis wheel

←----

3. 6-speed golf ball shift knob

←-----

4. 18" vision wheel

←-----

5. base carrier bars and barracuda® bike holder (upright – base carrier bars can fit 3 barracuda® bike holders)

←----

6. 18" karthoum wheel (in silver)

←-----

7. GTI monster mats™ & carpeted mat with red GTI logo

←-----

8. 17" activa wheel

←----

9. gorilla gear™ trunk liner and organizer blocks

keeping your fast happy—keeping you happy—
 when you tear out of our lot with a new GTI and a nice happy
 fast our goal is to make sure your fast stay happy—which
 means making sure you stay happy—which means servicing
 your GTI like it was our very own—it'll always be one of our little
 guys after all—so go have fun with your GTI—we'll be here
 when you need us—

basic limited warranty—
 every GTI comes with a bumper to bumper new vehicle
 limited warranty for 4 years or 50,000 miles whichever
 comes first—

powertrain limited warranty—
 the Volkswagen powertrain limited warranty provides
 5 years or 60,000 miles of protection whichever comes first—

**limited warranty against
 corrosion perforation—**
 a fully galvanized steel body means we can offer you a
 12 year unlimited mileage limited warranty against
 corrosion perforation—

roadside assistance—
 the GTI has a 24 hour a day roadside assistance package for
 4 years unlimited mileage provided by Road America®—
 wherever you go we got your back—

exterior specs

2-door/4-door

roof-mounted amplified flexible black whip diversity antenna	s
roof-mounted 'fin-type' black diversity antenna	o
dual oversized chrome exhaust pipes	s
anti-intrusion side door beams	s
black front grille with honeycomb mesh and red surrounding strip	s
high intensity gas-discharge headlamps (xenon) with clear, lightweight, chip resistant polycarbonate lenses	s
halogen foglights, integrated into front bumper	s
side blinkers integrated into side exterior mirrors	s
driver and passenger side power exterior mirrors, heatable	s
power glass sunroof with tilt, slide, tinted glass, manual sunshade, pinch protection, and driver's door power lock operated convenience closing feature	p
rear spoiler located above rear hatch	s
225/45 r17 h, summer performance tires	s
225/45 r17 h, all-season performance tires	o
225/40 r18 h, summer performance tires	o
205/55 r16 h, steel spare wheel and all-season tire	s
7j x 17" alloy wheels	s
7.5j x 18" alloy wheels	o
anti-theft wheel locks	s
windshield wipers with variable intermittent wipe feature	s
heatable windshield washer nozzles, front	p

interior specs

manual single-zone climate control (climatic), cfc-free	s
automatic dual-zone climate control (climatronic™), driver and passenger side controls for automatic climate control system, cfc-free	p
anti-theft vehicle alarm system for doors, hood, trunk lid, radio, and starter, with warning led in door top sill and with audible and visual activation	s
immobilizer theft deterrent system	s
cruise control stalk	s
brake pad wear indicator	s
illumination of controls and gauges—blue, with red indicators	s
multi function trip computer: featuring trip time, trip length, average trip speed, average trip fuel consumption, current fuel consumption, miles to empty, compass, radio station display, personalizing functions	s
folding keys (2) with radio-frequency remote transmitter for central locking, eyelet	s
valet key	s
remote central power locking system with selective unlocking	s
aluminum interior trim	s
power outlet (sae size) in trunk	s
1 power outlet (sae size) in center console	s

s = standard o = optional p = available with package

interiorspecs

2-door/4-door

premium am/fm radio sound system with in-dash 6-disc cd changer, mp3 format readable, satellite radio compatible, 10 speakers, theft-deterrent warning light and coding system	s
navigation system with visual and audible commands through color center console display and through multi-function onboard computer display in instrument cluster. replaces in-dash cd changer with single cd player.	o ¹
6-disc cd changer located in armrest between front seats	p
auxiliary input jack located in glovebox	s
satellite radio	o/p
driver and front passenger front airbag supplemental restraint system	s
driver and front passenger side thorax airbag supplemental restraint system	s
side curtain protection [®]	s
rear-impact optimized head restraints—front driver and passenger	s
emergency locking retractors for all seating positions	s
front seat safety belts pre-tensioners with load limiters	s
height adjustable front 3-point safety belts, color coordinated	s
rear 3-point safety belts, all 3 seating positions, color coordinated	s
latch (lower anchors and top-tether for children. formerly known as isofix)—child seat lower attachment points and tether rear outboard seating positions	s
child seat tether anchorage points with markings in rear seating positions	s
buckle switch (sensor that deploys airbag depending on safety belt use)	s
interlock feature—center rear safety belts cannot be extended unless seat back is in fully locked position	s
8-way manually adjustable sport front seats: fully reclining, height adjustable	s
top sport front seats	p
lumbar support, 2-way adjustable for driver and front passenger seats	s
lumbar support, 4-way electrically adjustable for driver and front passenger seats	p
heatable front seats	p
rear seat head restraints, height adjustable, all seating positions	s
60/40 split folding rear seat with center armrest and pass-through	s
3-spoke leather wrapped multi-function sport steering wheel, with audio controls (includes paddle shifters on both sides of steering wheel when equipped with optional 6-speed automatic direct shift gearbox)	s
height adjustable and telescoping steering column	s
steering wheel deformable/collapsible upon impact	s
theft-deterrent steering column	s
alloy pedals	s
chrome interior door handles	s
removable storage divider	s
interlagos plaid sport seat fabric	s
anthracite leather seating surfaces	p
air diffuser mounted centrally in-dash	p
pollen filter	s

interiorspecs

2-door/4-door

power windows with pinch protection and automatic one-touch feature, operable from driver's side only	s
-------------------------------------------------------------------------------------------------------	---

optionprogram

package 1	power sunroof, sirius satellite radio	o
package 2	items included in package 1, plus: climatronic™ dual-zone automatic climate control, top-level sport seats, leather seating surfaces, heated front seats and washer nozzles	o
	6-speed automatic direct shift gearbox with tiptronic [®]	o
	225/45 r17 h all-season performance tires (no charge)	o
	7.5j x 18" alloy wheels with 225/40 r18 h summer performance tires	o
	dvd navigation system with 6-disc cd changer located in front armrest	o
	sirius™ satellite radio	o
	optional or included with option packages 1 or 2	

technicalspecs

engine

type: 4 cylinder, in-line, turbocharged with intercooler and direct fuel injection
displacement: 121.0 in ³ 1,984 cm ³
compression ratio: 10.5:1
horsepower (sae) @ rpm: 200 @ 5,100-6,000 (147 kw @ 5,100-6,000)
maximum torque, lbs. - ft. @ rpm: 207 @ 1,800-5,000 (280 nm @ 1,800-5,000)
fuel requirement: premium unleaded (95 ron) recommended for maximum performance, (unleaded regular (91 ron) as an alternative with slight reduction in performance)

engine design

arrangement: front mounted, transverse
cylinder block: cast iron
crank shaft: five main bearings
cylinder head: aluminum alloy
valve train: dual overhead camshaft, belt driven, four valves per cylinder, maintenance free hydraulic lifters
fuel/air supply: fully electronic engine management with drive-by-wire throttle control, fsi [®]

body, chassis and suspension

type: utilized construction, bolt-on front fenders
front suspension: independent mcpherson struts, coil springs, telescopic shock absorbers, integrated stabilizer bar (sport suspension)
rear fully independent four-link suspension with coil springs, telescopic shock absorbers and stabilizer bar
drag coefficient .32

technicalspecs

2-door/4-door

interior volume - sae

seating capacity	five			
passenger volume	94.2 ft ³	2.7 m ³		
cargo volume	15.1 ft ³	0.4 m ³		
	front		rear	
volume	51.3 ft ³	1.5 m ³	42.9 ft ³	1.2 m ³
head room	39.3 in	998 mm	38.5 in	979 mm
shoulder room(2-door)	54.7 in	1,390 mm	54.6 in	1,386 mm
shoulder room(4-door)	54.8 in	1,391 mm	53.1 in	1,348 mm
leg room	41.2 in	1,046 mm	35.3 in	896 mm

dimensions

wheelbase	101.5 in	2,578 mm
front track	60.4 in	1,534 mm
rear track	59.7 in	1,516 mm
length	165.8 in	4,210 mm
width	69.3 in	1,759 mm
height	58.4 in	1,484 mm
ground clearance	5.6 in	143 mm

fuel consumption	manual	automatic
city	23 mpg	25 mpg
highway	32 mpg	31 mpg

fuel tank: 14.5 gal 55.0 l

drivetrain

front wheel drive

steering

electro-mechanical variable assisted power rack-and-pinion steering s

brakes

abs (anti-lock braking system)—standard, all four wheels, 3-channel with electronic brake pressure distribution, anti-slip regulation (asr) and electronic differential lock (edl), electronic stabilization program s

red front and rear brake calipers s

ebd—electronic brake-pressure distribution s

hba—hydraulic brake assistant s

traction control

asr—anti-slip regulation s

edl—electronic differential lock s

eba—engine braking assist prevents compression-induced skidding in slippery conditions s

brakes

electronic stabilization program s

transmission

6-speed manual transmission s

6-speed automatic direct shift gearbox with tiptronic® and sport mode o

technicalspecs

2-door/4-door

transmission

cable shift mechanism—manual transmission only s

clutch starter interlock for manual transmission. vehicle will not start if clutch is not depressed. s

hydraulic clutch for manual transmission s

warranty

12 year/unlimited distance limited warranty against corrosion perforation s

5 year/60,000 mile (whichever occurs first) powertrain limited warranty s

4 year/50,000 mile (whichever occurs first) new vehicle limited warranty.

wear & tear items and adjustments excluded after initial 12 month/12,000 miles (whichever occurs first). s

roadsideassistance

roadside assistance 4-year/unlimited mileage, 24-hour, provided by road america® s

¹ only available in combination with option packages 1 or 2

©2006 Volkswagen of America, Inc. Printed in USA. High-performance tires are designed for optimum performance and handling in warm climates. They are not suitable for cold, snowy, or icy weather conditions. If you drive under those circumstances, you should equip your vehicle with all-season or winter tires, which offer better traction under those conditions. We suggest you use the recommended winter or all-season tire specified for your car or its equivalent. These high-performance tires also have a lower aspect ratio that aids performance and handling; however, in order to avoid tire, rim or vehicle damage, it is important that the inflation pressure is regularly checked and maintained at optimum levels. Please also remember in making your selection that, while these tires deliver responsive handling, they may ride less comfortably and make more noise than other choices. Finally, these tires may wear more quickly than other choices. Volkswagen of America, Inc. believes the information and specifications in this brochure to be correct at the time of printing. Specifications, standard features, options, fabrics, and colors are subject to change without notice. Some features may be unavailable when your vehicle is built. Some vehicles are pictured with options that may be available at extra cost or may not be available on some models. Ask your dealer about the availability of options and verify that the vehicle you ordered includes the equipment you ordered. Tires are supplied and warranted by their manufacturer. EPA fuel mileages are estimates only. Your fuel consumption may vary. "Volkswagen," the Volkswagen logo, "GTI" and "DSG" are registered trademarks of Volkswagen AG. "Side Curtain Protection" is a registered trademark of Volkswagen of America, Inc. "Climatronic" is a trademark of Volkswagen of America, Inc. "Tiptronic" is a registered trademark of Dr. Ing. h.c. F. Porsche AG. Sirius Satellite Radio is a trademark of Sirius Satellite Radio Inc.™ "Baracuda" is a registered trademark of Mont Blanc. For further information regarding any Volkswagen model, please call 1-800-DRIVE VW or just look us up at vw.com. Before we sign off, remember, please don't drink and drive, and always remember to obey traffic laws.

type 11–20

A

your fast is frightening and it should probably be locked away forever. we could beg and plead with you not to purchase the GTI Mk V. but frankly, we think our admonitions might make you want one even more. we can only hope that your friends and loved ones will be able to talk some sense into you before you enter into an unhealthy relationship with this automobile.

type 21–30

B

your fast is hearty, robust and aggressive. when we built the GTI Mk V, we did it for a fast just like yours. after all, your fast is just like ours. your fast is an enthusiast. a purist. your fast appreciates driving as a complete sensory experience. with proper care and feeding, you and your fast will enjoy a mutually beneficial relationship for years to come.

type 31–40

C

your fast sits somewhere right on the apex of the fast bell curve. with just a bit more exercise and attention, your fast could grow to be a formidable and powerful one — a fast to be reckoned with. but deprived of torque or horsepower, your fast could just as easily wither into a sleepy decline. GTI or no GTI, the future of your fast lies in your hands.

type 41–50

D

your fast is severely atrophied. can the GTI Mk V help? it's possible. but you need to take action now. you've got to be willing to put in the miles, carve the hard corners, and work the transmission like you've never worked a transmission before. in time, we're confident your fast can make a complete recovery and lead a happy, healthy life.

type 51 +

F

you are the rare case. your fast is completely non-existent. many grandmothers have more of a fast than you. there's not a single sluggish bone in your body that would be interested in the GTI Mk V. in fact, we suggest you consider some other mode of transportation entirely. perhaps one of those electric mobility scooters with a nice basket on the front for your needlepoint.

←-----

so how well do you know your fast?
to tally your score, simply add together the numbers
corresponding to your answers. then, refer to the key.





everyGTIcomeswithfast



makefriendswithyourfast

GTI Mk V

VW07GTISBUS 5621

