



# Caddy Alltrack







# Ready when you are

The silver roof rails and door mirrors, privacy glass and tinted tail lights set the exceptional exterior of the Caddy Alltrack apart. Stand out from the crowd with the "Quito" alloy wheels. The highlights of the interior include the deluxe dash panel with "Carbon Square Dark" inserts, leather trims with nutmeg-coloured seams, chrome elements and airconditioning. The "Composition Media" radio system delivers the perfect soundtrack for every expedition.



# Space for everything

For us, flexible was never flexible enough. The Caddy Alltrack comes standard as a 5-seater, with an optional 7-seater package. The rear seats in the Caddy can be folded, and completely removed – sometimes even independently of each other. The single seats in the second seating row can even be double-folded if necessary. This allows the interior to be adapted whichever way your imagination conjures up – no matter how wild this may be.

2 Seats



3 Seats



4 Seats



As a 2-seater, the Caddy boasts an impressive 3,030 l loading space volume – and even more when the front passenger seat is folded down. Ideal for lots of luggage.

The second row of seats is divided in a ratio of  $\frac{2}{3}$  and  $\frac{1}{3}$ . This provides plenty of individually customisable usage possibilities.

Remove the 3rd seat in the second row of seats for extra packing space.



# Infotainment

The Caddy has been designed as a space where drivers will love to spend their time. The latest generation of high-quality radio systems impress with their easy control and good sound.



## **“Composition Media” radio system**

The system consists of a 16.5 cm (6.33 inch) TFT colour display, a touchscreen with proximity sensor, an MP3- and WMA-compatible CD drive, a 4 x 20 watt output with six loudspeakers, a dual tuner with phase diversity for optimal radio reception, an SD-card slot, an AUX-IN interface, USB interface (iPad, iPod and iPhone capable), and a Bluetooth connection for mobile phones.



## **Leather-covered multi-function steering wheel**

It gives you a good grip and is extremely user-friendly. The radio, a mobile phone or the cruise control can be controlled using the buttons.

## **“Plus” multi-function display (not illustrated)**

In addition to the functions of the multi-function display, it can be used to adjust the Light and Sight package.



## **“Comfort” mobile phone interface**

The special compartment for your mobile phone has a wireless external aerial connection to optimise your mobile phone reception. Charging the phone is straightforward too: The cellphone simply has to be connected to the USB interface (iPad, iPod and iPhone capable) which is also located in the compartment.

**Mobile phone interface** (not illustrated). A wireless Bluetooth interface enables you to make phone calls safely and conveniently during the journey using a microphone and the vehicle loudspeakers. It can be controlled via the “Plus” multi-function display or the touchscreen display of the radio system.

# Colours

The illustrations on this page can only be regarded as a general guide as the printing process cannot render the true depth and brilliance of the paint finishes with absolute accuracy. Please note that certain paint and trim combinations may not be available.

## Solid



**Candy White**

Solid



**Cherry Red**

Solid

## Pearl effect



**Deep Black**

Pearl

## Metallic



**Starlight Blue**  
Metallic



**Acapulco Blue**  
Metallic



**Fortana Red**  
Metallic



**Indium Grey**  
Metallic



**Reflex Silver**  
Metallic



**Mojave Beige**  
Metallic



**Chestnut Brown**  
Metallic



**Black Berry**  
Metallic



**Sandstorm Yellow**  
Metallic



**Viper Green**  
Metallic

# Wheels



## **17" 'Quito'**

alloy wheels with  
205/50 R17 93H tyres  
(Standard)

# Exterior



## **Sliding window**

With handles for easy operation.

## **Towbar preparation (not illustrated)**

This consists of a trailer detection control unit complete with wiring, and includes trailer stabilisation. A towbar can therefore easily be retrofitted at any time.



## **Detachable towbar**

This lockable towbar can be detached when not in use. This makes manoeuvring easier, especially when parking in small spaces. Like the fixed towbar, it is designed for trailer loads of 660 kg (unbraked) to 1,500 kg (braked), and is also fitted with trailer stabilisation. (Optional)



## **Bi-Xenon headlights**

The Bi-Xenon headlights produce both high and low beams, and illuminate the roadway significantly better than conventional halogen headlights. They also stand out due to their low energy consumption. With tinted tail lights.





#### **Tinted tail lights**

They add a distinctive flair, and lend the tailgate a bold character. Available in conjunction with Bi-Xenon headlights.



#### **Tailgate with window**

The smooth-functioning tailgate can be opened with one hand. When open, it offers protection from rain and sunshine during loading and unloading. A third brake light is integrated into the spoiler. The tailgate is always equipped with a soft touch opening system.

#### **Rear wing doors with windows**

The roof-height rear wing doors are divided in a ratio of  $\frac{2}{3}$  to  $\frac{1}{3}$ , and have a maximum opening angle of 180 degrees. Please bear in mind when ordering rear wing doors, the number plate light holder is made of black plastic.



# Interior and comfort

## Leather trims

The pleasant feel of the leather trim controls add to the vehicle comfort, and raise the interior to a whole new level. The leather trim equipment includes the gear lever knob and the handbrake lever, as well as the gaiter. It's combined with the leather-covered multi-function steering wheel.

\*\* A combination of leather and high-quality durable materials





#### 12 V socket in compartment, front

A 12 V socket is integrated into the storage compartment on the dash panel, e.g. for mobile phones or notebooks.

#### 12 V plug in central console (not illustrated)

The socket is located in the easily accessible front area of the central console.

#### 12 V socket in load space (not illustrated)

For portable cooler boxes and larger 12 V devices, there is also a socket in the load space.



#### Climatic® airconditioning

The semi-automatic airconditioning has an infinite adjustment, so that a pleasant interior temperature can be ensured at all times. Thanks to ergonomic buttons and knobs, the temperature in degrees, air distribution, and fan speed can be easily regulated while driving.



#### Electric windows

The flip switches are comfortably located within easy reach in the armrest on the door interiors, and have a comfort switch with jamming protector.



#### Light and Sight package.

Sensors dim the rear-view mirror automatically when the lights of the vehicle behind are too bright, and regulate the intervals of the windscreen wipers during rain. The automatic driving light control with daytime running lights switches the headlights on automatically when it starts to get dark. The package also features the manual "coming home" and "leaving home" functions.



#### Lashing rings

There are four lashing rings in the load compartment of the Caddy to safely secure loads. If you choose the optional third seating row for the Caddy with the short wheelbase, the number of available lashing rings in the load space is limited to two.

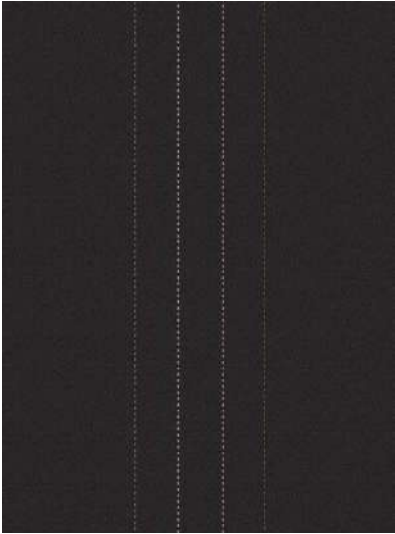
#### Soft touch opening system (Not illustrated)

The tailgate is opened effortlessly using a button on the underside of the number plate light holder.



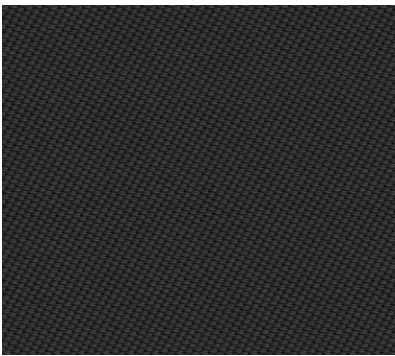
# Trims

## Seat upholstery



7 Summits

## Decorative trim



Dark Carbon Square

# Caddy Alltrack Specifications

X = standard   O = optional   - = not available

| Caddy Alltrack Specification                                 | Caddy Alltrack<br>2.0 TDI<br>81kW<br>SWB | Caddy Alltrack<br>2.0 TDI<br>103kW DSG®<br>SWB |
|--|--|--|
| Engine   |  |  |
| Cylinders  | 4  | 4  |
| Capacity (cm³)   | 1968                                     | 1968   |
| Output (kW @ r/min)  | 81 @ 4200                                | 103 @ 4200                                     |
| Torque (Nm @ r/min)  | 250 @ 1500-2500                          | 320 @ 1750-2500                                |
| CO <sub>2</sub> emissions (g/km)*                            | 147                                      | 166  |
| Transmission   |  |  |
| 5-speed manual   | X  | -  |
| 6-speed DSG®   | -  | X  |
| Performance  |  |  |
| Acceleration in seconds (0-100 km/h)                         | 12,4                                     | 10,6   |
| Top speed (km/h)   | 170                                      | 186  |
| Fuel Consumption   |  |  |
| Urban cycle (litres / 100 km)*                               | 6,9                                      | 7,5  |
| Extra-urban cycle (litres / 100 km)*                         | 5,0                                      | 5,4  |
| Combined cycle (litres / 100 km)*                            | 5,7                                      | 6,2  |
| Running Gear   |  |  |
| Standard suspension and shock absorption                     | X  | X  |
| Brakes   |  |  |
| ABS (Anti-lock Braking System)                               | X  | X  |
| MCB (Automatic Post-collision Braking System)                | X  | X  |
| ESP (Electronic Stability Programme)                         | X  | X  |
| EDL (Electronic Differential Lock)                           | X  | X  |
| TCS (Traction Control System)                                | X  | X  |
| Hill-hold control  | X  | X  |
| Wheelrims / Tyres  |  |  |
| 17" Quito alloy wheels<br>with 205/50 R17 93H Tyres          | X  | X  |
| Full-sized spare wheel (alloy)                               | X  | X  |
| Dimensions / Capacities                                      |  |  |
| Fuel tank (litres)   | 55                                       | 55   |
| Length (mm)  | 4430                                     | 4430   |
| Width excl. mirrors (mm)                                     | 1793                                     | 1793   |
| Width incl. mirrors (mm)                                     | 2079                                     | 2079   |
| Height excl. roof rails (mm)                                 | 1824                                     | 1824   |
| Height incl. roof rails (mm)                                 | 1861                                     | 1861   |
| Wheelbase (mm)   | 2682                                     | 2682   |
| Overhang - front (mm)  | 901                                      | 901  |
| Overhang - rear (mm)   | 847                                      | 847  |
| Ground clearance (measured underneath the engine guard) (mm) | 160                                      | 160  |

# Caddy Alltrack Specifications

X = standard   O = optional   - = not available

| Caddy Alltrack Specification   | Caddy Alltrack<br>2.0 TDI<br>81kW<br>SWB | Caddy Alltrack<br>2.0 TDI<br>103kW DSG®<br>SWB |
|--|--|--|
| Dimensions / Capacities (continued)  |  |  |
| Loading sill over stationary level (mm)  | 576                                      | 576  |
| Loading height (mm)  | 1226                                     | 1226   |
| Approach angle (degrees)   | 14.0                                     | 14.0   |
| Ramp angle (degrees)   | 13,9                                     | 13,9   |
| Departure angle (degrees)  | 17,8                                     | 17,8   |
| Turning circle (m)   | 11,1                                     | 11,1   |
| Load compartment width, min. / max. (mm)   | 1120 / 1136                              | 1120 / 1136                                    |
| Luggage compartment floor length, behind 1st / 2nd / 3rd row of seats (mm)       | 1781 / 1095 / 224                        | 1781 / 1095 / 224                              |
| Load/passenger compartment volume (Seats removed / 5-seater / 7-seater) (litres) | 3030 / 750 / 190                         | 3030 / 750 / 190                               |
| Side sliding doors, width x height (mm)  | 701 x 1086                               | 701 x 1086                                     |
| Tailgate, width x height (mm)  | 1183 x 1127                              | 1183 x 1127                                    |
| Gross Vehicle Mass (GVM) (kg)  | 2250                                     | 2280   |
| Unladen weight, minimum (kg)   | 1494                                     | 1521   |
| Payload, maximum (kg)  | 756                                      | 759  |
| Axle load limit - Front / Rear (kg)  | 1100 / 1200                              | 1100 / 1200                                    |
| Trailer weight, 12% gradient - Braked / Unbraked (kg)                            | 1500 / 730                               | 1500 / 750                                     |
| Gross train weight (kg), 12% gradient  | 3650                                     | 3780   |
| Seats  |  |  |
| Number of seats  | 5  | 5  |
| 3-seater bench (separately folding and removable) in 2nd row of seats            | X  | X  |
| Comfort seats for the driver and front passenger                                 | X  | X  |
| Lumbar support for driver and front passenger seats - manually adjustable        | X  | X  |
| Height adjustment for front seats  | X  | X  |
| '7 summit' fabric seat trim covers   | X  | X  |
| Windows  |  |  |
| Electric windows   | X  | X  |
| Heat-insulating windshield made of laminated glass                               | X  | X  |
| Dark tinted glass all around (Privacy glass)                                     | X  | X  |
| Sliding windows in front of passenger area - left and right                      | X  | X  |
| Fixed side windows in rear of passenger area - left and right                    | X  | X  |
| Heated rear window   | X  | X  |
| Mirrors  |  |  |
| Electrically adjustable, heated and folding exterior mirrors                     | X  | X  |



# Caddy Alltrack Specifications

X = standard    O = optional    - = not available

| Caddy Alltrack Specification  | Caddy Alltrack<br>2.0 TDI<br>81kW<br>SWB | Caddy Alltrack<br>2.0 TDI<br>103kW DSG®<br>SWB |
|---|--|--|
| Wiper System  |  |  |
| Windshield wiper with intermittent control and rain sensor  | X  | X  |
| Rear window wiper and washer system with intermittent control   | X  | X  |
| Safety  |  |  |
| Driver and front passenger airbags (incl. front passenger deactivation)   | X  | X  |
| Side and curtain airbags for driver and front passenger   | X  | X  |
| Rest Assist (fatigue detection)   | X  | X  |
| 3-point seatbelts - front   | X  | X  |
| Seatbelts in 2nd and 3rd row of seats   | X  | X  |
| Warning buzzer and light for driver seatbelt not fastened   | X  | X  |
| First Aid kit and warning triangle  | X  | X  |
| Security  |  |  |
| Remote-controlled central locking with SAFELOCK   | X  | X  |
| Anti-theft alarm system with interior monitoring, back-up horn and towing protection  | X  | X  |
| Audio and Communication   |  |  |
| 'Composition Media' radio with touchscreen  | X  | X  |
| Mobile phone interface  | X  | X  |
| Voice Enhancer  | X  | X  |
| USB interface (iPod, iPad and iPhone capable) with AUX-IN jack  | X  | X  |
| 6 speakers  | X  | X  |
| Interior Features   |  |  |
| 'Dark Carbon Square' decorative inserts on dashboard  | X  | X  |
| Climatic® airconditioning system  | X  | X  |
| Seat heater for driver and front passenger seat (separately controlled)   | X  | X  |
| Sunvisors with vanity mirrors - left and right  | X  | X  |
| Chrome inserts on light and mirror switches plus handbrake lever button   | X  | X  |
| Drawers under front seats   | X  | X  |
| Multi-function display ('Plus')   | X  | X  |
| Multi-function leather** steering wheel, handbrake lever and gearshift knob   | X  | X  |
| Servotronic® power-steering (speed-sensitive)   | X  | X  |
| Cruise control  | X  | X  |
| Folding table on backrest of front seats  | X  | X  |
| Dust and pollen filter  | X  | X  |
| Centre console with armrest and 3 cup holders (2 front, 1 rear) incl. height and longitudinal adjustment of armrest on Alltrack | X  | X  |

# Caddy Alltrack Specifications

X = standard   O = optional   - = not available

| Caddy Alltrack Specification   | Caddy Alltrack<br>2.0 TDI<br>81kW<br>SWB | Caddy Alltrack<br>2.0 TDI<br>103kW DSG®<br>SWB |
|--|--|--|
| Interior Features (continued)  |  |  |
| Plastic door trim panel with armrest in fabric   | X  | X  |
| Interior lighting  | X  | X  |
| Luggage compartment cover  | X  | X  |
| Glove compartment (illuminated) with lockable lid  | X  | X  |
| Carpet floor covering in cab and passenger area  | X  | X  |
| Smokers' package: 12V socket with cigarette lighter and ashtray  | X  | X  |
| 12V socket in dashboard and in luggage compartment   | X  | X  |
| Lashing rings  | 4  | 4  |
| Exterior Features  |  |  |
| Towbar preparation (incl. trailer stabilisation)   | X  | X  |
| Silver exterior mirror housings with body-coloured door handles and sliding door cover   | X  | X  |
| Radiator grille with 3 chrome strips   | X  | X  |
| Partially painted body colour bumpers  | X  | X  |
| Sliding doors - left and right   | X  | X  |
| Automatic headlamp activation with separate daytime running lights and 'Coming/Leaving Home' function  | X  | X  |
| Tinted tail lights   | X  | X  |
| Front fog lamps (incl. static cornering light)   | X  | X  |
| Tailgate with window   | X  | X  |
| Silver roof rails  | X  | X  |
| Protective side moulding (body-coloured)   | X  | X  |
| Park Distance Control - rear only  | X  | X  |
| Bi-xenon headlamps with separate LED daytime running lights and blacked-out tail lights including Light & Sight Package: 'Coming/Leaving Home' function, light and rain sensor, auto-dimming rear-view mirror and cruise control | X  | X  |
| Options  |  |  |
| 3-seater bench (separately folding) in 2nd row of seats with 2-seater bench (folding) in 3rd row of seats  | O  | O  |
| 7-seater package (3-seater bench in 2nd row and 2-seater bench in 3rd row of seats)  | O  | O  |
| Park Distance Control (front and rear) with rear-view camera (Not avail. with rear wing doors)   | O  | O  |
| Removable towbar (incl. trailer stabilisation)   | O  | O  |
| Rear wing doors (with black door handles)  | O  | O  |

# Caddy Alltrack Specifications

X = standard   O = optional   - = not available

| Caddy Alltrack Specification                                 | Caddy Alltrack<br>2.0 TDI<br>81kW<br>SWB | Caddy Alltrack<br>2.0 TDI<br>103kW DSG®<br>SWB |
|--|--|--|
| Guarantees   |  |  |
| 3-year / 120,000 km manufacturer warranty                    | X  | X  |
| 3-year / 60,000 km Volkswagen EasyDrive Vehicle Service Plan | X  | X  |
| 15,000 km service intervals                                  | X  | X  |
| 12-year anti-corrosion warranty                              | X  | X  |

**Disclaimer**

- 1. Dimensions, capacities and abilities apply to standard vehicles.
- 2. Actual consumption will vary with vehicle loading, driving style, climatic and road conditions.
- 3. This information was effective as at 01 June 2020 valid for model year 20 and is subject to change without notice.

Vehicle Tare mass given at 90% tank filling without driver (75kg). Selected optional extras increase the unloaded weight of the vehicle.

**\*Fuel Consumption and Carbon Dioxide Emission Figures**

The figures reflected were obtained in accordance with prescribed uniform measuring standards (SANS 20101: 2006 / ECE R101: 2005 in their currently applicable versions) under laboratory type conditions. The measuring standards are stipulated by law. They do not apply to a specific vehicle and are provided to enable comparison between different vehicle models tested using the same uniform measuring standard. The values are accordingly not necessarily representative of real-life driving conditions. Factors such as driving style, vehicle load, road conditions, tyre size, traffic and ambient conditions may result in different fuel consumption and carbon dioxide emission levels to those achieved under the test parameters referred to above. More details are contained in the owner's manual.

**\*\*A combination of leather and high quality durable materials.**



# Caddy Alltrack Plans

| Volkswagen EasyDrive<br>Vehicle Maintenance Plans   | Caddy Alltrack<br>2.0 TDI<br>81kW<br>SWB | Caddy Alltrack<br>2.0 TDI<br>103kW DSG®<br>SWB |
|---|--|--|
| Maintenance Plan (4-year /60,000 km)  | R4,817                                   |  |
| Maintenance Plan (5-year / 90,000 km)   | R16,008                                  |  |
| Maintenance Plan (5-year / 120,000 km)  | R29,892                                  |  |
| Maintenance Plan (6-year / 150,000 km)  | R45,758                                  |  |
| Maintenance Plan (6-year / 180,000 km)  | R59,358                                  |  |
| Maintenance Plan (7-year / 210,000 km)  | R74,941                                  |  |
| Maintenance Plan (8-year / 240,000 km)  | R92,791                                  |  |
| Maintenance Plan (9-year / 270,000 km)  | R108,658                                 |  |
| Maintenance Plan (10-year / 300,000 km)   | R126,366                                 |  |
| Subject to an Active Volkswagen Standard Warranty and Active Volkswagen Standard Service Plan |  |  |

| Volkswagen EasyDrive<br>Vehicle Service Plans | Caddy Alltrack<br>2.0 TDI<br>81kW<br>SWB | Caddy Alltrack<br>2.0 TDI<br>103kW DSG®<br>SWB |
|---|--|--|
| Service Plan (3-year / 60,000 km)             | X  |  |
| Service Plan (4-year /60,000 km)              | R1,973                                   |  |
| Service Plan (5-year / 90,000 km)             | R8,694                                   |  |
| Service Plan (5-year / 120,000 km)            | R14,018                                  |  |
| Service Plan (6-year / 150,000 km)            | R19,323                                  |  |
| Service Plan (6-year / 180,000 km)            | R25,125                                  |  |
| Service Plan (7-year / 210,000 km)            | R31,013                                  |  |
| Service Plan (8-year / 240,000 km)            | R37,911                                  |  |
| Service Plan (9-year / 270,000 km)            | R43,215                                  |  |
| Service Plan (10-year / 300,000 km)           | R51,174                                  |  |



## Buying a Volkswagen is only the beginning of our journey together

At Volkswagen, it's our mission to keep you and your family moving forward on life's journey. That's why we have a range of products and services designed to keep your Volkswagen in optimum condition and give you peace of mind. From car services and maintenance plans, to genuine parts and roadside assistance, Volkswagen is with you all the way.



### EasyDrive Vehicle Plans

**You do life,**  
we'll take care of the ride

Volkswagen's EasyDrive Vehicle Plans offer affordable and easy to understand cover on Service and Maintenance Plans. Our plans offer specialist care from qualified Volkswagen experts, ensuring your vehicle maintains its re-sale value. This way you can get back to enjoying the journey.

## Get-Go

**Service you know straight**  
from the Get-Go

The Get-Go service is available to all Volkswagen drivers with a vehicle that's four years or older, and without a Service or Maintenance Plan. You can get an affordable annual service for your Volkswagen by knowing the rate from the get-go. Get-Go Service includes parts and labour and will help you to maintain your service history.





This information was effective as at 01 August 2020  
valid for model year 20 and is subject to change  
without notice.

Visit us at [vw.co.za](http://vw.co.za)  
©Volkswagen South Africa