



Commercial  
Vehicles



# The Amarok V6 W-Series





Commercial  
Vehicles



WALKINSHAW

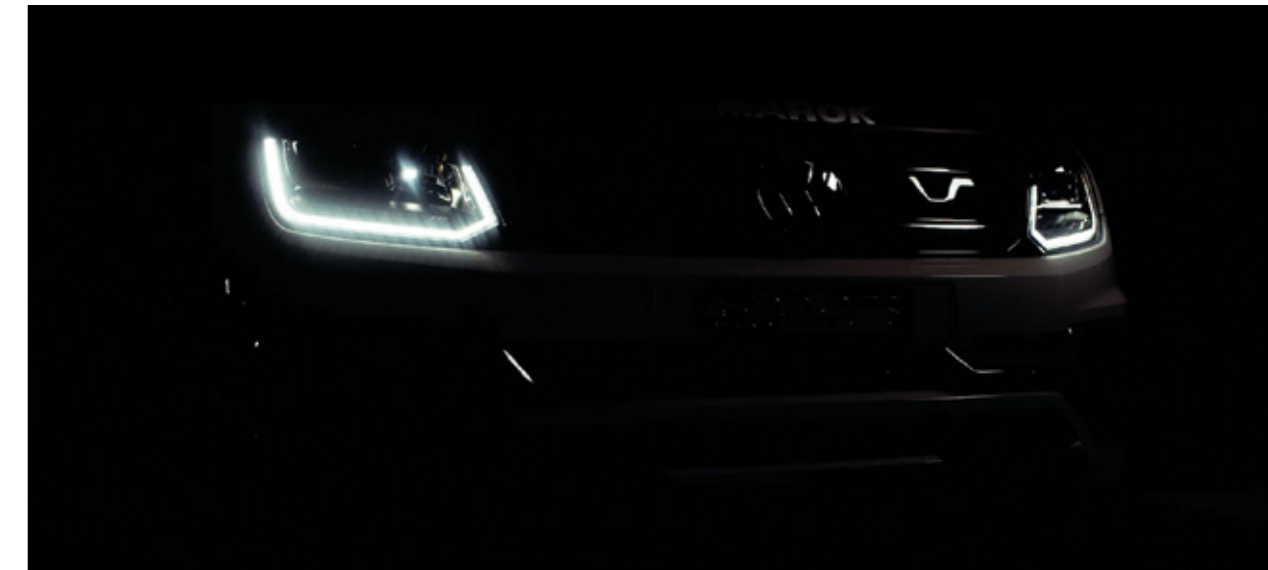
Since the launch of the Amarok V6 in 2016 Volkswagen have felt the Amarok deserved a flagship performance variant.

Walkinshaw, synonymous with performance, quickly established themselves as Volkswagen's partner of choice due to their passion and expertise in design, engineering and production.

Built in collaboration with



Walkinshaw felt the Amarok lent itself to a high-performance GT-type vehicle, thanks to its 3.0 litre V6 turbo-diesel engine and class leading torque. So, their expert engineers set about tuning the Amarok V6 chassis to be a true on-road performance machine. The result is advances in its feel, turn-in, and performance ability, making it the best performing dual cab on the market.



The Walkinshaw design team focused on making the Amarok V6 W-Series wider and more aggressive, with a completely redesigned front bumper, air intake grille, wheel arch flares, and a unique forged aluminium 20-inch 'Clayton' alloy wheel fitted with Pirelli scorpion ATR tyres. The W-series interior also features unique Walkinshaw branded floor matts and headrests.



# The Amarok V6 **W-Series**



W580S shown

## A force to be reckoned with.

Volkswagen Australia has called on Australia's leading producer of automotive performance cars Walkinshaw to create utes for drivers who like to forge their own paths. A true GT, which is both powerful and dynamic, with bold and aggressive styling to match.

### Highlights

#### An aggressively styled and tuned GT-style pick-up

- 200kW of power on overboost
- 20" x 9" custom forged alloy wheels
- Pirelli Scorpion ATR tyres
- Enhanced GT suspension tune
- Wheel arch flare extensions
- New design front upper grille and fog lamp surrounds

# Creating a new **Aussie icon**

Nobody knows performance like Walkinshaw. Synonymous for success both on and off the track, Walkinshaw is the perfect partner to take the powerful Amarok V6 to the next level with aggressive styling and GT-inspired tuning.



W580S Interior shown

### Exterior

- 20" x 9" forged alloy 'Clayton' wheels
- Pirelli Scorpion ATR Tyres (275 / 50 R20)
- Wheel arch extensions
- New front upper grille design
- New lower bumper inserts and fog lamp surround design
- LED front fog lamps
- Bonnet protector
- Decals - Side (doors)
- Decals - Bonnet^
- Decals - Side (lower tub)^

### Interior

- Walkinshaw branded head rests
- W580 tailored carpet mats
- Interior branded / numbered plaque

### Mechanical

- Front suspension lift and tune (MTV twin tube damper)
- Rear suspension tune (MTV twin tube damper)
- Tuned and branded stainless steel twin exhaust^



W580 shown

^ Exclusive to the W580S



# Refined utility

The Amarok V6 W-Series is the ultimate chameleon, with the perfect mix of utility and refinement. The spacious cabin offers class leading width for maximum comfort, with plenty of room for the whole family. The Amarok W580 offers premium Art Velour microfleece upholstered seats, in addition to the leather-wrapped multi-function steering wheel with shift paddles. The W580S takes the luxury up a level with front 14-way adjustable ergoComfort seats, wrapped in two-tone Vienna leather<sup>#</sup>.



## App-Connect<sup>†</sup>

With this function, selected apps are mirrored from your smart phone to the touch screen of the radio or navigation system display via the USB port and controlled using the touchscreen.

| W580 | W580S |



## Climatronic air conditioning

This system offers 2-zone temperature control for the driver and front passenger. Depending on the intensity of the sun's rays and the outside temperature, the air conditioning adds more or less cool air accordingly.

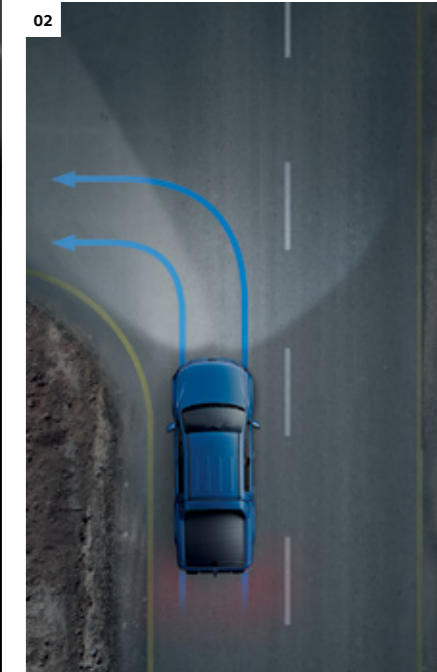
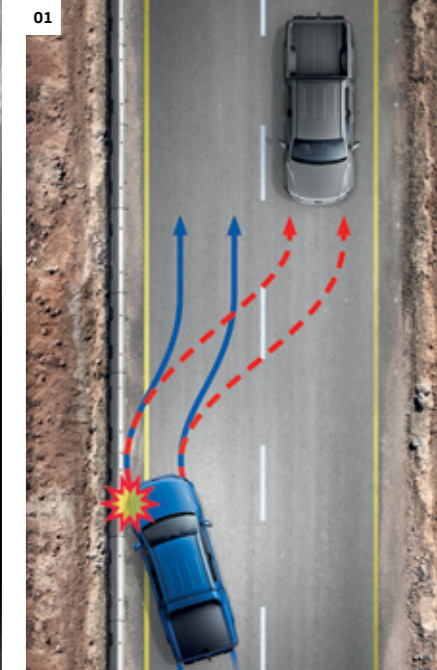
| W580 | W580S |



W580S interior shown

## Interior Features

- Steering wheel mounted gear (paddle) shifters
- Gloss black dash inserts
- Height and reach adjustable steering wheel
- Headlights with rain sensing wipers
- Walkinshaw branded headrests
- W580 branded front carpet mats



### 01. Automatic Post-Collision Braking System.

Triggers braking after a collision, with the aim of preventing secondary collisions.

| W580 | W580S |

### 02. Static cornering light.

Ensures optimal visibility in poor weather conditions.

The fog light nearest to the corner illuminates the roadside when turning

| W580S |

<sup>#</sup> Leather appointed seats have a combination of genuine and artificial leather, but are not wholly leather.

<sup>†</sup> App-Connect is compatible for selected apps with the latest smartphone versions of iOS and Android, active data service, optional connection cable (sold separately).



# Rule the road.

## 3.0L TDI580 (190kW, 580Nm) overboost function up to 200kW

- 0-100km in 7.3 seconds
- 3,500kg Braked Towing Capacity<sup>^</sup>



W580S shown

The engine and gearbox combination ensures optimum performance and driving engagement. Peak power surges to 200kW, with performance optimised in 3rd and 4th gear, the Overboost function increases the engine's output for up to ten seconds, making it ideal for overtaking. 4MOTION all-wheel drive provides exceptional traction on virtually any surface, while the 8 speed ZF Automatic ensures smooth power delivery. With great power comes great responsibility, that is why the Amarok V6 is fitted with powerful 4-wheel disc brakes.

<sup>^</sup> When fitted with Volkswagen Genuine Tow Bar. Towing capacities are applicable to Volkswagen Genuine Accessory Tow Bar. Towing capacity figures are maximum figures and actual towing capacity depends on factors including the laden mass of the vehicle, driving conditions and fitment of any accessories. Volkswagen Group Australia does not endorse or will not be held liable for any claim, loss or damage arising from the use or fitment of electronic trailer brakes.



## Amarok V6 W580

- Bi-xenon headlamps with LED daytime running light lamps
- Anti-theft alarm system
- Dual zone climatronic air conditioning
- Art Velour seat trim
- Headrests with Walkinshaw branding
- Multi-function steering wheel with paddle shifters
- Black interior headlining
- Black exterior mirror housing and rear bumper
- Composition media audio with App-connect<sup>™</sup>
- Tyre pressure monitoring system
- Black side steps
- 20" x 9" forged alloy 'Clayton' wheels
- Pirelli Scorpion ATR tyres (275/50R20)
- Wheel arch extensions
- Front suspension lift and tune
- New front upper grille design
- Front bumper inserts (fog lamp surrounds)
- W580 tailored carpet mats
- LED fog lamps

## Amarok V6 W580S

W580, plus:

- Sail plane styling bar
- Front under body styling element
- 5 piece protective tub liner
- Bonnet decals
- Vienna leather appointed upholstery<sup>#</sup> in black and grey
- Headrests with Walkinshaw branding
- 14 way adjustable Ergo Comfort heated front seats
- Electric folding mirrors
- Discover Media Navigation
- Instrument cluster with centre colour multifunction display
- Tuned and branded stainless steel twin exhaust
- LED fog lamps with cornering function



<sup>#</sup> Leather appointed seats have a combination of genuine and artificial leather, but are not wholly leather

<sup>™</sup> App-Connect is compatible for selected apps with the latest smartphone versions of iOS and Android, active data service, optional connection cable (sold separately).



# Technical Specification

Engine	3.0 litre V6 TDI580
Type	6 cylinder turbo diesel, 24 valve
Installation	Longitudinal
Cubic capacity, litres/cc	3.0 / 2,967
Bore/stroke, mm	83.0 / 91.4
Max power, kW @ rpm	190 @ 3,250 - 4,500
Max torque, Nm @ rpm	580 @ 1,400 - 3,000
Compression ratio	17.0:1
Fuel system	Bosch EDC17 electronic engine control unit
Exhaust emission control	Water-cooled exhaust gas recirculation (EGR), catalytic converter and diesel particulate filter (DPF)
Fuel type (Recommended)	Diesel EN 590
Fuel tank capacity, litres	80
Battery	450 Amp 95AH Non-AGM
Transmission	8 Speed Automatic
Driven wheels	4x4 (4MOTION) Permanent
Gear Ratio	1st Gear: 4.714 2nd Gear: 3.143 3rd Gear: 2.106 4th Gear: 1.667 5th Gear: 1.285 6th Gear: 1.00 7th Gear: 0.839 8th Gear: 0.667 Reverse Gear: 3.317
Performance#	
0 - 100km/h, seconds	7.3
Fuel Consumption**	
Combined, L/100km	9.5
Urban, L/100km	11.4
Extra Urban, L/100km	8.4
CO <sub>2</sub> emission, g/km	250

#Please note figures are sourced from overseas data where equipment levels by model variant may vary. \*\*Fuel consumption figures according to ADR 81/02 derived from laboratory testing. Factors including but not limited to driving style, road and traffic conditions, environmental influences, vehicle condition and accessories fitted, will in practice in the real world lead to figures which generally differ from those advertised. Advertised figures are meant for comparison amongst vehicles only.

# Technical Specification

Weights	3.0 litre V6 TDI
Unladen Mass <sup>2</sup> Kg's	
W580S	2,284
W580	2,227
Payload <sup>‡</sup> kg	
W580S	848
W580	905
Gross Vehicle Mass (GVM) kg	3,080
Gross Combined Mass (GCM) kg	6,000
Roof load kg	100
Towbar Capacity <sup>^</sup>	
Braked kg	3500
Unbraked kg	750
Towbar load limit kg	300
Exterior Dimensions	
Overall length mm	5,254
Width mm	2,019
Width incl. mirrors mm	2,228
Height, mm	1,882
Wheelbase mm	3,097
Ground clearance, mm	258
Wading depth, mm	500
Track mm	
Front**	1,712
Rear**	1,708
Tray Dimensions#	
Length, mm	1,555
Width mm (Max.)	1,620
Width mm (between wheel arches)	1,222
Tail gate opening mm (Max.)	1,364
Height (tail gate) mm	508
Load area m <sup>2</sup>	2.52
Tie down points	4
Height from ground mm	780

2. The Unladen Mass (UM) includes 10L of fuel, vehicle fluids and no occupants. Figures quoted are for base model vehicles only.

‡Payload is defined as the Gross Vehicle Mass (GVM) minus the Kerb Mass. Payload is the maximum combined weight of occupants, cargo, added structures and tow ball down weight (when towing). GVM must not be exceeded.

# Please note figures are sourced from overseas data where equipment levels by model variant may vary.

\*\* Track figures are based on rim off-set of 20.

<sup>^</sup>When fitted with Volkswagen Genuine Tow Bar. Towing capacities are applicable to Volkswagen Genuine Accessory Tow Bar. Towing capacity figures are maximum figures and actual towing capacity depends on factors including the laden mass of the vehicle, driving conditions and fitment of any accessories. Volkswagen Group Australia does not endorse or will not be held liable for any claim, loss or damage arising from the use or fitment of electronic trailer brakes.

# Technical Specification

<b>Chassis</b>	Full-length ladder frame chassis in high strength steel Fully galvanised body with 6 year anti-corrosion perforation warranty
<b>Running Gear</b>	<b>3.0 litre V6 TDI</b>
Suspension	Transverse link with A-frame arm double wishbone, MTV twin tube damper and anti-roll bar
Front axle	Multi-layer rigid axle with leaf spring, MTV twin tube damper and stabiliser bar
Rear axle	
Steering	Power assisted rack & pinion steering (Hydraulic)
Brake size	332, Ventilated Discs
Front, mm	300, Ventilated Discs
Rear, mm	
Brake systems	ESP, off-road ABS, ASR, EDL, Hill Holder, Brake Assist, Traction Control and Off-Road ABS including Hill Descent
Turning circle, metres	12.45

Built in collaboration with



## Amarok V6 W580 Paint Finishes



Candy White

Deep Black (PE)\*

Indium Grey (MP)\*

Pyrit Silver (MP)\*

Atlantic Blue (MP)\*

## Amarok V6 W580S Paint Finishes



Candy White

Deep Black (PE)\*

Indium Grey (MP)\*

Pyrit Silver (MP)\*

Atlantic Blue (MP)\*



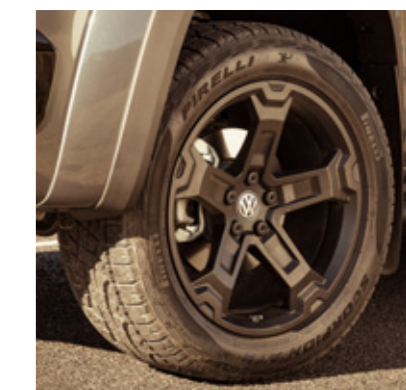
**Art Velour Trim**

Two-colour microfleece seat upholstery in Palladium/Titanium Black



**Vienna Leather# Trim**

Two-colour Vienna Leather# upholstery in Palladium Grey /Titanium Black



**20" x 9" forged 'Clayton' Alloy Wheels**

With 275 / 50 R20 Pirelli Scorpion ATR Tyres  
Steel spare wheel 255/60 R18 112T

\*Please note that Metallic and Pearl affect paint are optional at additional cost The print process does not allow for exact reproduction of the exterior or the upholstery colours. Not all colours are available with optional body coloured bumpers and/or roof height increases. # Leather appointed seats have a combination of genuine and artificial leather, but are not wholly leather.

## Volkswagen Accessories

Volkswagen Genuine Accessories ensures your Amarok remains 100% Volkswagen. The extensive range of Amarok Genuine Accessories provides you with the opportunity to adapt your Amarok even more precisely to your individual needs. From interior to exterior solutions, styling options, Volkswagen Genuine Accessories perfectly compliments your Amarok. For the full range, please visit [www.volkswagen.com.au](http://www.volkswagen.com.au)



### 01 Roof bars

Part.no VGA071126AM17 (Flush mount, load rating 100Kg)  
Part.no VGA071126AM17C (Commercial, load rating 100Kg)



### 02 Amarok platform system

Part.no VGA2H6421AM17 (Load rating 75Kg)



### 03 Towbar

Part.no 2H6092134 (3.5 Tonne towbar for Amarok V6 auto only - MY18 onwards)





**04 Premium roll Cover**

Part.no 2H7071774GNP1 (W580 model)  
 Part.no 2H7071774ENP1 (W580S model)  
 Part.no VGACCVW80B02 (Roof racks to suit W580 roll cover)  
 Part.no VWCCF090B02 (Roof racks to suit W580S roll cover)



**05 Amarok bed divider system**

Only in conjunction with the W580 roll over  
 Not compatible with W580S model  
 Part.no VGABDVW80A01



**08 Amarok alloy tray range**



**09 Amarok self-lowering tailgate system**

Part.no VGA2H00ED0800 (with torsion bar)  
 Part.no VGA2H00ED0300 (without torsion bar)



**06 Premium canopy**



**07 Standard canopy**



**10 Slimline weathershields (tinted)**

Part.no VGA845015S



**11 Amarok electronic trailer brake controller kit**

Part.no VGA2HETBAMK



# Peace of Mind



## 5 years Unlimited Kilometre Warranty

At Volkswagen, we pride ourselves on the highest quality standards that come with German engineering.

We back this commitment with a 5 year unlimited kilometre warranty on all new Volkswagen vehicles\*.



## 1 year Roadside Assist

Every new Volkswagen comes with a 1 year Roadside Assist membership^.

That's 24 hour roadside assistance, emergency accommodation, car rental and towing as well as property and other assistance, all included for added peace of mind.



## Volkswagen Care Plans

Volkswagen Care Plans† have you covered for your first 3 or 5 scheduled services, providing you savings off the total Assured Service Pricing RRP. It's convenient, hassle-free scheduled servicing easily available for purchase at your local Volkswagen Dealer.



## Assured Service Pricing

Assured Service Pricing# gives you the transparency of knowing how much your service will cost up front.

Our Volkswagen Dealers have access to the latest diagnostic equipment and tools. Plus, they use Volkswagen Genuine Parts® to ensure your Volkswagen stays a Volkswagen.

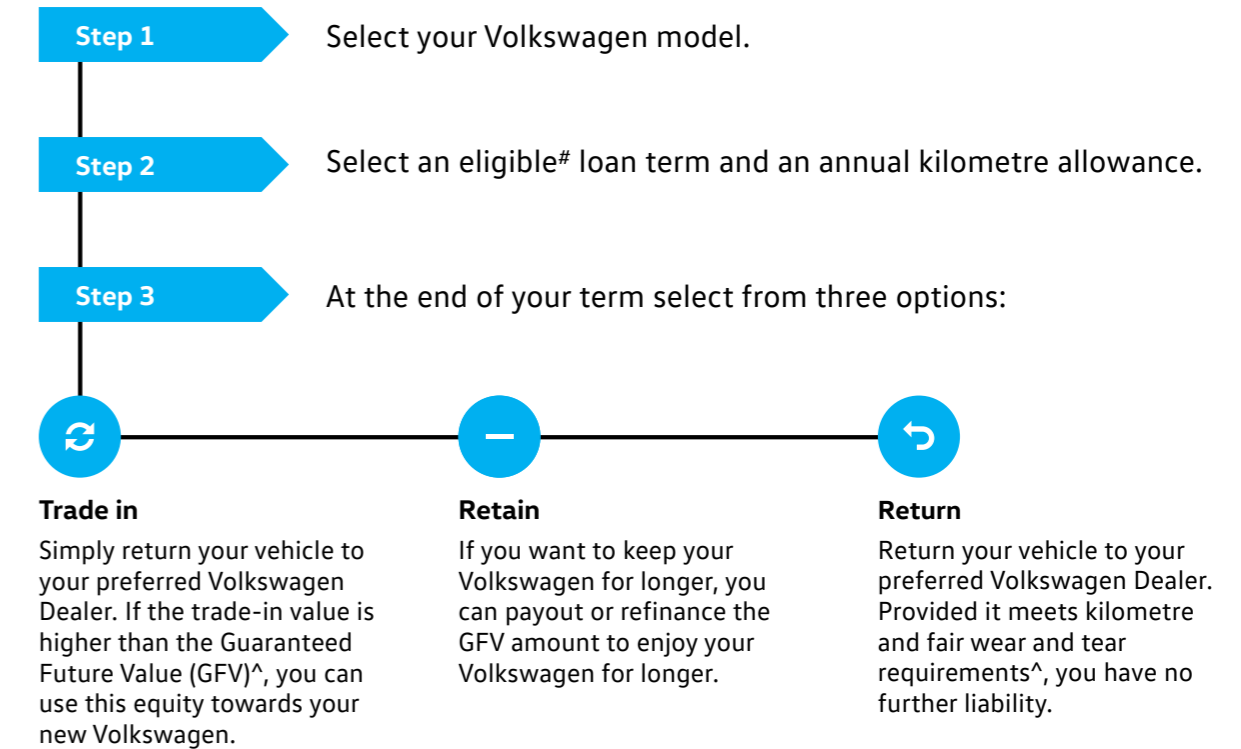
You're in safe hands at your Volkswagen Dealer when it comes to servicing.

# Volkswagen Choice^

Guarantee the minimum future value of your Volkswagen

Naturally we understand that your Volkswagen represents a valuable investment, so we understand that you want to maintain it in premium condition. Volkswagen Choice^ is a finance program tailored to the requirements of Volkswagen owners by providing assurance around your Volkswagen's future value^, whilst offering simple monthly instalment financing options.

Whether you are selecting your new Volkswagen for business or personal use, you can choose the contract term that best suits your requirements. Enjoy the confidence that comes from having locked in a minimum value up front to be attributed to your vehicle at the end of your contract^. There are also no account keeping fees with a fixed interest rate.



\*Conditions and exclusions apply, see <https://www.volkswagen.com.au/en/owners-service/warranty.html>. Your rights under this warranty are provided in addition to, and in some cases overlap with, consumer guarantees under the Australian Consumer Law and do not limit or replace them.

^Volkswagen Roadside Assist is provided by AWP Australia Pty Ltd ABN 52 097 227 177 trading as Allianz Global Assistance, under an arrangement with Volkswagen Group Australia Pty Limited ABN 14 093 117 876. Conditions and exclusions apply, see <https://www.volkswagen.com.au/en/owners-service/roadside-assist.html>.

†Volkswagen Care Plans are available for purchase at <https://www.volkswagen.com.au/en/owners-service/care-plans.html> or from participating authorised Volkswagen Dealers for Eligible Vehicles and covers standard items as contained in each scheduled service interval only. The service intervals occur every 15,000 KM/12 months (whichever occurs first) for all models except MY18 to current Crafter vehicles and MY21 onwards Amarok vehicles, which are scheduled to occur every 20,000 km/12 months (whichever occurs first). These Care Plans can only be purchased prior to the first scheduled service and up to 22,500 km/15 months (whichever occurs first) for all models except MY18 to current Crafter vehicles and MY21 onwards Amarok vehicles which is 30,000 km/15 months (whichever occurs first). The timeframe takes effect from when the vehicle is first reported in our system as 'sold'. Discount structure varies by model. For details of what is not included in a scheduled service, please refer to the program terms and conditions.

#Assured Service Pricing applies to the first 5 standard scheduled services of your vehicle which are scheduled to occur at every 15,000 km/12 month interval (whichever occurs first) or for MY18 to current Crafter vehicles and MY21 onwards Amarok vehicles only, 20,000 km/12 month interval (whichever occurs first). On or before 31 December each year, Volkswagen will publish the maximum price for a specified Schedule Service that will be applicable from, and remain fixed for, the following calendar year only. For details on the Eligible Model List, pricing, items not included and for full terms and conditions, please see <https://www.volkswagen.com.au/app/locals/service-pricing-guide>.

^Volkswagen Guaranteed Future Value consists of an option to return your vehicle to Volkswagen Financial Services (VFS) ABN 20 097 071 460, Australian Credit Licence 389344, at the end of the term and requires VFS to purchase the vehicle at an agreed price determined by VFS, known as the Guaranteed Future Value (GFV). #Eligible loan terms include 12-60 months, vary by model and are subject to change, ask dealer for more information. At the end of the term, you can elect to: (1) trade-in; (2) return; or (3) retain the vehicle by paying the GFV, which is a lump sum owed to VFS at the end of the loan term after all repayments have been made. You will be liable for any loan contract deficit and additional charges if you exceed the nominated kilometre allowance and/or the vehicle is not in an acceptable condition. Available on new and demonstrator Volkswagen vehicles for selected models. Contact your Official Volkswagen Dealer to verify eligible vehicles for this program. Fleet, government, rental buyers, hire car and chauffeur companies excluded.



# The Amarok V6 W-Series

Volkswagen Group Australia Pty Ltd  
24 Muir Road Chullora NSW 2190  
ABN 14 093 117 876

September 2021  
[www.volkswagen.com.au](http://www.volkswagen.com.au)

Publication: VWCAMARW580SPMY22

Your Volkswagen Dealer.

#### **Important information**

Apple CarPlay® registered trade mark of Apple Inc. Android Auto™ is a registered trade mark of Google Inc. Bluetooth® is a registered trade mark of Bluetooth SIG Inc.

Volkswagen is distributed by Volkswagen Group Australia Pty Ltd (ABN 14 093 117 876) of 24 Muir Road Chullora, NSW 2190. Specifications are as planned at September 2021, for Model Year 2022 and are subject to change without notice or obligation. All information in this brochure are correct at the time of publication, however variations may occur from time to time and Volkswagen, in so far as it is permitted by law to do so, shall not be liable in any way as a result of any reliance by any person on anything contained in this brochure. Authorised Volkswagen Dealers will provide up-to-date information on model application, design feature, prices, and availability on request.