



Amarok

Commercial
Vehicles





V6

Amarok 190kW

The Amarok



**Steady on the trails. Spirited on the asphalt.
The Amarok combines everything that you expect
from an exclusive, premium-class all-rounder:
A masculine design and robust construction along
with plenty of power, capable to tackle anything.**

2.0 4 cylinder BiTDI

With a power output of 132kW and torque of 420Nm.

3.0 V6 TDI engine

With a power output of up to 190kW,
overboost of 200kW and torque of up to 580Nm.

Interior design

A cockpit, practical storage and only vehicle with award-winning,
14-way adjustable "ergoComfort" seats (on Extreme model).

Exterior design

Grill design sports bar (optional on Extreme) and alloy wheels
of up to 20-inches.

Unique drive combination

Permanent 4MOTION® all-wheel drive with a 8-speed automatic gearbox,
plus selectable 4MOTION including low range with 6-speed manual gearbox.
4 x 2 with 8-speed automatic gearbox. Towing load of up to 3.5 tons,
even whilst carrying a 1-ton payload.

Best load platform surface usage

Widest and deepest load platform with easiest moving
tailgate in its class.

Optimised safety

Automatic Post-Collision Braking System, 17-inch disc brakes
at the front and 16-inch disc brakes in the rear (V6 models).

High safety across all terrains

Unique off-road Anti-lock Braking System, Hill Descent Control, Hill Start
Assist, Electronic Stabilisation Control, Anti-Slip Regulation, Traction
Control System, Electronic Differential Lock, Electronic Brake-force
Distribution, Maximum Rear Axle Deceleration, Engine Drag Torque
Control and Multi-Collision Braking.

Modern infotainment systems

Radio and navigation systems with App-Connect mobile online services.



The Amarok Highline 4MOTION Manual

For the experience.

On the outside, you'll see the Amarok making tough look effortless. But what you don't see is the TDI engine that combines 132 kW of power and 400 Nm of torque with outstanding fuel efficiency. You don't see the 4MOTION® system or unique off-road ABS, ASR and ESP that ensure a steady ride over even the harshest terrain. It's the under-the-skin technology that makes tough possible.

Standard equipment

Exterior

- 18-inch "Manaus" alloy wheels
- Radiator grille with two horizontal chrome and six vertical chrome strips
- Colour-coded front bumper and door handles
- Colour-coded door mirror housings, chrome sections
- Privacy glass
- Chrome rear bumper with built-in step
- Tinted tail lights

Interior

- "Salipra" fabric upholstery
- Dash panel with decorative inserts in Light Silver
- Handbrake lever and gear lever knob
- Chrome trim in the interior
- Map pockets behind the driver and front passenger seats
- Four 12 V sockets

Operating equipment

- "Climatronic" airconditioning
- "Composition Media" radio system with six loudspeakers
- Instrument cluster with "Plus" multi-function display
- Leather-covered multi-function steering wheel
- Cruise control system

Safety

- Fog lights with chrome frame
- Park Distance Control in the front and rear
- Tyre pressure monitoring System

The Amarok Highline



The Amarok Highline is built for the explorers.

It offers premium driving comfort, even under the toughest of conditions. This is due to the perfect harmony created between the running gear and drive calibration – combined with the proven and tested 4MOTION® all-wheel drive which knows how to pack a punch when it needs to.

Standard equipment

Exterior

- 18-inch “Manaus” alloy wheels
- Radiator grille with two double chrome strips and six vertical chrome trims
- Bi-xenon headlights with LED daytime running lights
- Colour-coded front bumper and door handles
- Colour-coded door mirror housings, chrome sections
- Privacy glass
- Chrome rear bumper with built-in step
- Tinted tail lights

Interior

- “Vienna” leather seat upholstery
- Dash panel with decorative inserts in Light Silver
- Leather-covered handbrake lever and gear lever knob
- Chrome trim in the interior
- Map pockets behind the driver and front passenger seats
- Four 12 V sockets

Operating equipment

- “Climatronic” airconditioning
- “Discover Media” navigation system with six loudspeakers
- Instrument cluster with “Plus” multi-function display
- Leather-covered multi-function steering wheel
- Cruise control system

Safety

- 17-inch disc brakes at the front, 16-inch disc brakes in the rear (V6 only)
- Fog lights with chrome frame
- Park Distance Control in the front and rear
- “Rear View” reversing camera



The Amarok Extreme

For an exclusive look.

The Amarok Extreme is built to withstand the toughest terrains. The Extreme comes with a Automatic with a Automatic Post-Collision Braking System, 17-inch disc brakes at the front and 16-inch disc brakes in the rear as standard.

Masculinity and safety. Everything you could ever want in a bakkie.

Standard equipment

Exterior

- 20-inch "Talca" alloy wheels
- Radiator grille with two double chrome strips and six vertical chrome trims
- Bi-xenon headlights with LED daytime running lights
- Colour-coded front bumper and door handles
- Colour-coded exterior mirrors, chrome sections
- Privacy glass
- Optional - colour-coded sports bar with "Extreme" badge
- Side steps
- Load surface with special coating
- 4MOTION® decals
- Chrome rear bumper with built-in step
- Tinted tail lights

Interior

- "Nappa" leather seat upholstery in Black
- Dash panel with decorative inserts in Light Silver
- Chrome trim in the interior
- ergoComfort seats for the driver and front passenger (12-way electrical adjustment, 2-way manual adjustment)
- Map pockets behind the driver and front passenger seats
- Stainless steel pedals
- Four 12 V sockets

Operating equipment

- "Climatronic" airconditioning
- "Discover Media" navigation system with six loudspeakers
- Instrument cluster with "Premium Colour" multi-function display
- Leather-covered multi-function steering wheel
- Cruise control system

Safety

- 17-inch disc brakes at the front, 16-inch disc brakes in the rear (V6 only)
- Fog lights with chrome frame
- Park Distance Control in the front and rear
- "Rear View" reversing camera

V6



Stronger

3.0 V6 TDI engine and the only bakkie in its class with an 8-speed automatic gearbox. Powerful like no other: the 190kW six-cylinder turbodiesel engine with 3.0 capacity has more than enough reserves, even in the most demanding situations. Additional power comes from the overboost function, which briefly increases the performance of the V6 190kW TDI engine up to 200kW depending on the driving situation.

Equally unique: the option to combine the 8-speed automatic gearbox with permanent 4MOTION® all-wheel drive. While the first gear has been specifically optimised for pulling off on steep slopes, when towing a trailer and when in tough terrain, the eighth gear reduces fuel consumption through low-speed driving on long journeys.

Standard for all **Amarok equipment lines**



Exterior

- Front design
- Cargo box with loading width of 1,222 mm
- Smooth functioning tailgate
- Privacy glass

Interior

- Height-adjustable driver and front passenger seat
- Steering wheel, height- and reach-adjustable
- Carpet floor covering in the front and rear
- Folding seats on the rear bench seat

Operating equipment

- Hill Descent and Hill Start Assist
- Central locking with radio remote control
- One-touch auto electric windows all-round
- Electrically adjustable and heated exterior mirrors
- Heated rear window

Safety

- Off-road ABS (Anti-lock Braking System)
- Automatic Post-Collision Braking System
- Driver and front passenger airbags, side / head airbags
- Electronic Stabilisation Programme with trailer stabilisation
- Daytime running lights
- Third brake light in LED design
- Four lashing eyes on the load platform

Interior & Comfort



“Premium Colour” multi-function display.

A high-resolution 3D colour display and animated menu guidance so that everything is a pleasure to control. | EX |

“Plus” multi-function display (not illustrated).

Up-to-date information, such as remaining range, outside temperature and average consumption, conveniently displayed in the instrument cluster. | HL |



Leather-covered multi-function steering wheel with paddles.

For excellent grip and a premium feel. Ergonomic paddles allow you to change gears for a sportier driving style. | EX |

Multi-function steering.

The radio or navigation system and your mobile phone can be controlled using the buttons within easy reach. | HL |

Winter package (not illustrated).

Making the start of the day that little bit easier in the cold months. This package includes heated windscreen washer nozzles, a washer fluid display and seat heating for the driver and front passenger seat. | HL | EX |



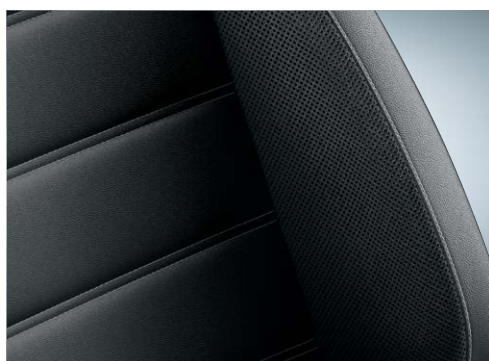
“Climatic” airconditioning (not illustrated). This semi-automatic airconditioning system has an interior sensor to constantly compare the interior temperature with the desired temperature in the vehicle, and then adjusts it accordingly.

Depending on the intensity of the sun’s rays and the outside temperature, the airconditioning adds more or less cool air to ensure the interior temperature remains comfortable. | HL | EX |

12 V sockets (not illustrated). Up to three 12 V sockets are available inside the vehicle: one in the dash panel, one in the central console and one in the second row of seats. (A fourth socket is located in the load bin for external power requirements) | HL | EX |



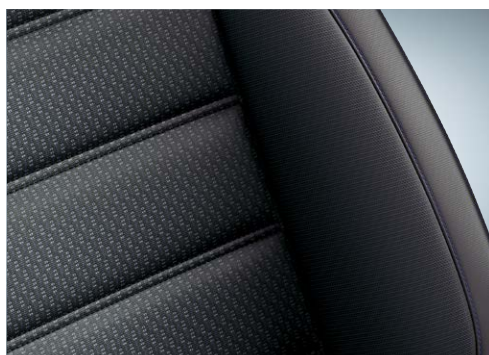
Seat Upholstery



"Nappa" leather seat upholstery
in Black | EX |



"Vienna" leather seat upholstery



"Salipra" leather seats upholstery
in Palladium | HL |

Infotainment



Voice control. Operate the telephone, navigation and audio functions without taking your hands off the steering wheel. And call up virtually all of the menus and notifications on the radio or navigation system display using voice commands. | HL | EX |

Electronic voice amplification (not illustrated).

This function makes sure that passengers in the rear seats can hear the driver. The voice input is recorded through a hands-free microphone, amplified, and then transmitted over the loudspeaker in the rear with no delay.

| HL | EX |



"Composition Media" radio system. Consists of a 16.5 cm TFT colour display, a touchscreen with proximity sensors, voice control, an MP3, AAC and WMA-compatible CD drive, 4 x 20 watt with six loudspeakers, a dual tuner with PhaseDiversity and electronic voice amplification. | HL |

App-Connect. App-Connect guarantees the best possible connection between you and your smart device whilst driving. With this software, selected apps from your smartphone can be used while driving. App-Connect supports MirrorLink™, Apple CarPlay™ and Android Auto™. | HL | EX |



"Discover Media" navigation system. In addition to the "Composition Media" features, this system includes a second SD card slot and an SD card with map data for built-in navigation. | HL | EX |

*The electronic voice amplification is included in the "Composition Media" radio system and "Discover Media" navigation system.
* Buttons shown on the radio images may change.

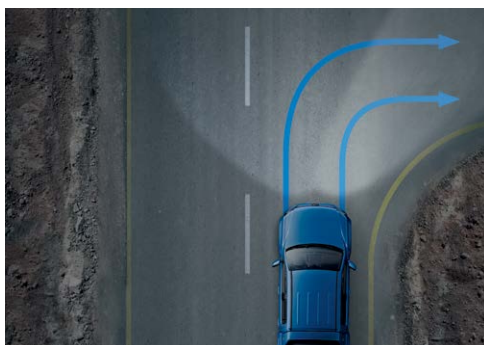
Drivers assistance Systems



ParkPilot. Emits audible warnings when obstacles are detected in front of or behind the vehicle while parking. A visual display of the vehicle's distance from the obstacles is also provided. | HL | EX |



"Rear View" reversing camera. Simplifies parking and trailer hitching by showing a limited view of the area behind the vehicle on the display of the radio or navigation system. Static guidelines overlaid on the screen facilitate the parking process. | HL | EX |

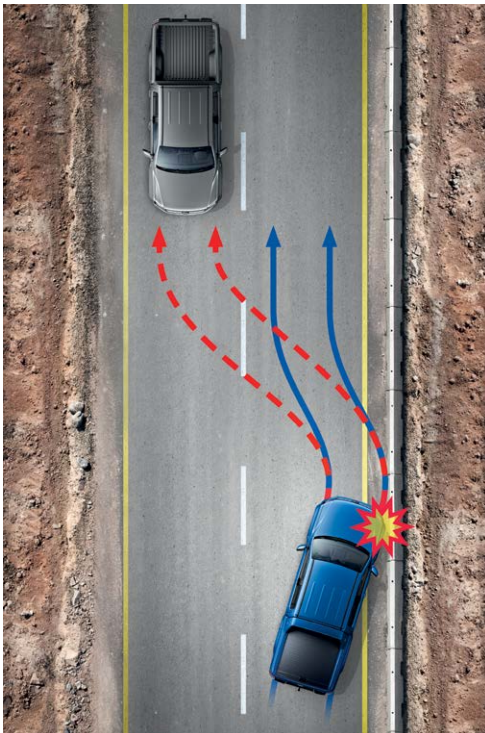


Fog lights with integrated static turning light. Ensures optimal visibility in poor weather conditions. The headlight nearest to the corner illuminates the roadside when turning. | HL | EX |

Light and Sight package (not illustrated). The windscreen wipers are activated if it starts raining and the wiping interval is adapted to the amount of rain. The interior mirror is automatically tinted if the headlights in the vehicle behind are too bright. Also included in the package: automatic driving light control when darkness starts to fall, as well as the "coming home / leaving home" function which illuminates the vehicle surrounds when approaching or leaving the vehicle in darkness, prompted by the remote unlocking button on the key. | HL | EX |

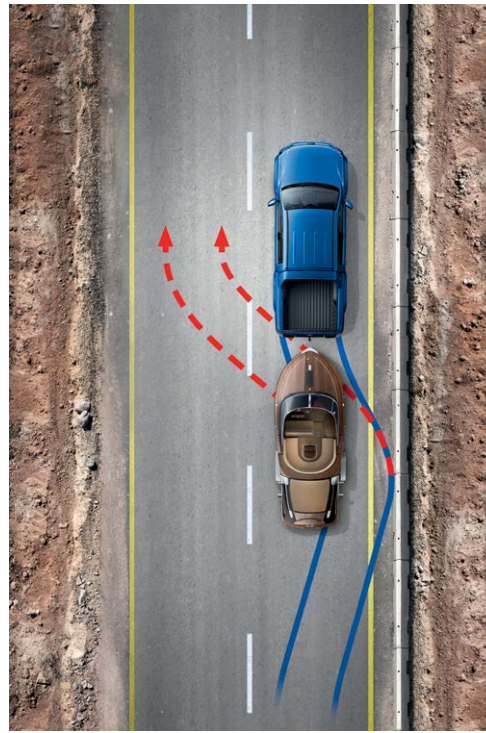
* Buttons shown on the radio images may change.

Safety Systems



Automatic Post-Collision Braking System. Triggers braking after a collision, with the aim of preventing secondary collisions. After a short delay, the vehicle begins a phased braking action down to 10 km/h, during which the driver can take over at any time.
| HL | EX |

Electronic stabilisation programme (not illustrated). Prevents under- or over-steering via targeted braking of individual wheels.
| HL | EX |



Trailer stabilisation. Should the trailer start to fluctuate heavily, this system automatically slows it down by means of controlled braking and reduced engine torque. This steadies the trailer and increases driving safety. **Feature only available when fitted with a genuine Volkswagen electrical harness.** | HL | EX |

Anti-theft warning system (not illustrated). Triggers acoustic and visual warnings at signs of unauthorised entry. As well as interior monitoring, the system includes an electronic immobiliser, a safe-lock (which can be deactivated) and a tow-away warning.
| HL | EX |



Off-road Performance



On-demand 4MOTION® all-wheel drive. A transfer case enables the front wheels to be electrically engaged and disengaged while driving. On steep inclines or longer stretches of gravel, an additional reduction gear can also be activated. The adjustable 4MOTION® all-wheel drive is combined with the 6-speed manual gearbox.

| HL |

Electro-mechanical differential lock (not illustrated). The vehicle also has an Electro-mechanical differential lock as standard which ensures ideal traction on sandy and slippery terrain. Following activation, both of the rear wheels are powered with even power and even speed.

| HL | EX |



Permanent 4MOTION® all-wheel drive. This 4x4 drive system with a self-locking Torsen central differential is unique in the bakkie segment and provides a balanced 40:60 distribution for all on-road and off-road tasks. This vehicle also comes into its own on the road by significantly increasing traction when cornering. The only vehicle in its class to offer 4MOTION® permanent all-wheel drive with an 8-speed automatic gearbox.

| HL | EX |



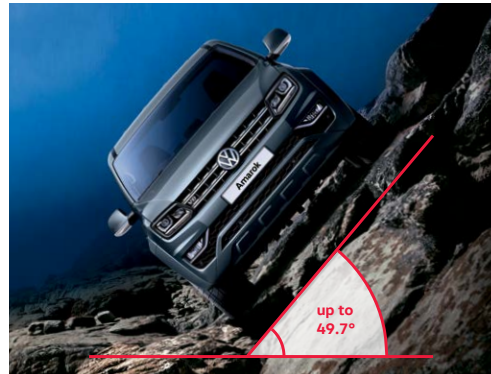
Brake-over angle. Thanks to its increased ground clearance and depending on the loading condition, the Amarok can even climb ramps with an angle of up to 23.0°. | HL | EX |



Slope angle and wading depth. The maximum slope angle for the Amarok is 29.5° at the front and 23.6°²⁾ at the rear. It has a wading depth of 500 mm. | HL | EX |



Gradients. The Amarok handles up to 45° inclines with a payload of up to 1 t. | HL | EX |



Lateral gradient. The broad wheelbase of the Amarok, coupled with the placement of the wheels on the side of the chassis (unique amongst bakkies), provides a lower centre of gravity and thus outstanding stability, even when driving along slopes with a 49.7° incline. | HL | EX |



Off-road ABS. Once activated, the unique Off-road ABS locks the wheels for longer intervals when braking on loose surfaces to build up a wedge of gravel which significantly reduces the braking distance. | HL | EX |



Hill Descent Control. This allows you to drive down slopes in a safe, controlled way, thanks to the engine management's ability to govern the engine speed, and apply the brakes when driving off-road if necessary. The vehicle's speed is maintained at a constant crawling pace. | HL | EX |

*The distribution varies depending on the surface. The values vary depending on the equipment and engine. Please contact your local Volkswagen Commercial Vehicles dealer for details of the standard equipment and optional extras applicable.

Load Platform

The widest and deepest load bin in its class.



Load platform lighting. The third brake light doubles up to provide light on the load platform, allowing you to load your cargo in the dark.

| HL | EX |

Lashing eyes (not illustrated). The cargo box is equipped with four robust lashing eyes mounted securely on the chassis frame for added safety. Two are located near the front and two are at the back, behind the wheel housing.

| HL | EX |



Wheel arches. The Amarok is the only bakkie that can fit a Euro pallet between its wheel arches. It has a lockable tailgate with a clever Torsen bar system to make closing the tailgate effortless.

| HL | EX |

Colours

The illustrations on this page can only be regarded as a general guide as the printing process cannot render the true depth and brilliance of the paint finishes with absolute accuracy. Please note that certain paint and trim combinations may not be available.



Candy White
Solid | HL | EX |



Deep Black
Pearl Effect | HL | EX |



Mojave Beige
Metallic | HL | EX |



Indium Grey
Metallic | HL | EX |



Atlantic Blue
Metallic | EX | HL |



Pyrite Silver
Metallic | EX | HL |

Wheels

Roll resistance-optimised tyres (not illustrated).

All Amarok models are equipped with fuel-conserving summer tyres as standard. These are manufactured from a special rubber compound which minimises deformation from driving. This can reduce fuel consumption depending on the speed.

| EX | HL |



"Manaus"

alloy wheel 7.5 J x 18

With 255/60 R 18 tyres | HL |



"Milford"

alloy wheel 8.0 J x 19

With 255/55 R 19 tyres | HL | EX |



"Talca"

alloy wheel 8.0 J x 20

With 255/50 R 20 tyres | EX |

Volkswagen Accessories

The Amarok is a multi-functional, comfortable premium vehicle equipped with everything you wish for. If you would like to have a few extras, Volkswagen Accessories offers interesting additional equipment options, which have been developed in cooperation with our Development and Design department. The extras represent high quality, and are only available at your Volkswagen Dealer.



"Aspen" alloy wheel: 2H0071496A 8Z8

6 ½ J x 16. These alloy wheels are also compatible with snow chains. | HL | EX |

Tarpaulin and attachments. With just a few simple steps the tarpaulin is secured to the cargo box's quick-release brackets, protecting your cargo against inclement weather and from fall out during the journey. The storage box cannot be combined with the styling bar. | HL | EX |



Cargo Area Cover, folding, plastic: 2H7071779B



Cargo area cover, aluminium: 2H7071779D



Side bars: 2H0071693A

The gloss-finish stainless steel bars can hold up to 200 kg and have a diameter of 76 mm; they can be secured to the standard attachment points without any additional drilling. | HL | EX |



Side bars with steps: 2H0071691E 72A

These bars also feature a high-gloss stainless steel pipe, lending the vehicle a sportier, more dynamic feel. They are fitted with sturdy steps and can hold up to 200 kg. These side bars are also available in



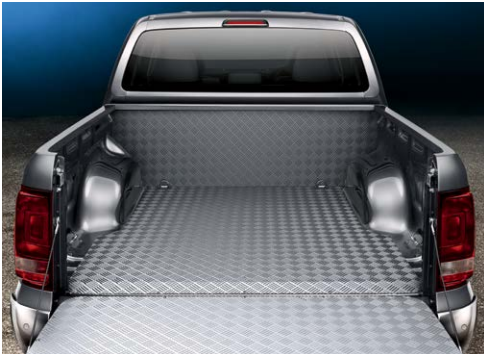
10 -11 Decorative film with "Amarok" batches.

Silver: 2H0064317 9S Black: 2H0064317 19A

The four high-quality, silver-coloured design films* with punched out logo emphasise the stylish side of the Amarok. They are attached in the lower areas of the doors. The batches are also available in Black.

| HL | EX |

*Decorative film may show signs of wear and tear or ageing, in particular when subjected to direct sunlight, after a period of 1 to 3 years or even within 1 year in very hot climates. If the decorative film remains on the vehicle for an extended period of time, visual differences may appear between the area protected by the film and the paint finish that is not covered by film. Volkswagen Accessories are offered by Volkswagen Zubehör GmbH, An der Trift 67, 63303 Dreieich, <https://shops.volkswagen.com>, and are available only at your Volkswagen Commercial Vehicles dealer. You can find additional accessories in our full catalogue which is available from your Volkswagen Dealer. Please contact your local Volkswagen Commercial Vehicles dealer for details of the standard equipment and optional extras applicable in your country.



Aluminium load platform cladding: 2H7061164H

The front panel, the load surface and the loading flap are protected by tailor-made corrugated aluminium panels while the side panels are protected by custom-fit plastic trays.

| HL | EX |



Robust hardtop with sliding windows.

This colour-coded hard top design comes with a front sliding window and side windows that can be locked from the inside. | HL | EX |

White:	2H7071776B B9A
Reflex Silver Metallic:	2H7071776B A7W
Deep Black:	2H7071776B C9X
Starlight Blue Metallic:	2H7071776B T5U



"Service" hardtop.

Colour-coded panelled side flaps and top tailgate with a glass window are easy to open and close, providing easy access to the cargo box.

| HL | EX |

Candy White:	2H7071776H WKF
Reflex Silver Metallic:	2H7071776H A7W
Deep Black Pearl effect:	2H7071776H C9X
Starlight Blue Metallic:	2H7071776H T5U

Volkswagen Accessories are offered by Volkswagen Zubehör GmbH, An der Trift 67, 63303 Dreieich, <https://shops.volkswagen.com>, and are available only at your Volkswagen Commercial Vehicles dealer. You can find additional accessories in our full catalogue which is available from your Volkswagen Dealer. Please contact your local Volkswagen Commercial Vehicles dealer for details of the standard equipment and optional extras applicable in your country.



AMAROK

V6
EMOTION

Amarok 190kW



Commercial
Vehicles



This information was effective as at June 2021
valid for model year 21 and 22 and is subject to
change without notice.

Visit us at vw.co.za
©Volkswagen South Africa