

# S70



**VOLVO**

**“Cars are driven by people.** The guiding principle behind everything we make at Volvo therefore is, and must remain, **safety.”**

Assar Gabrielsson. A Volvo founder. 1927







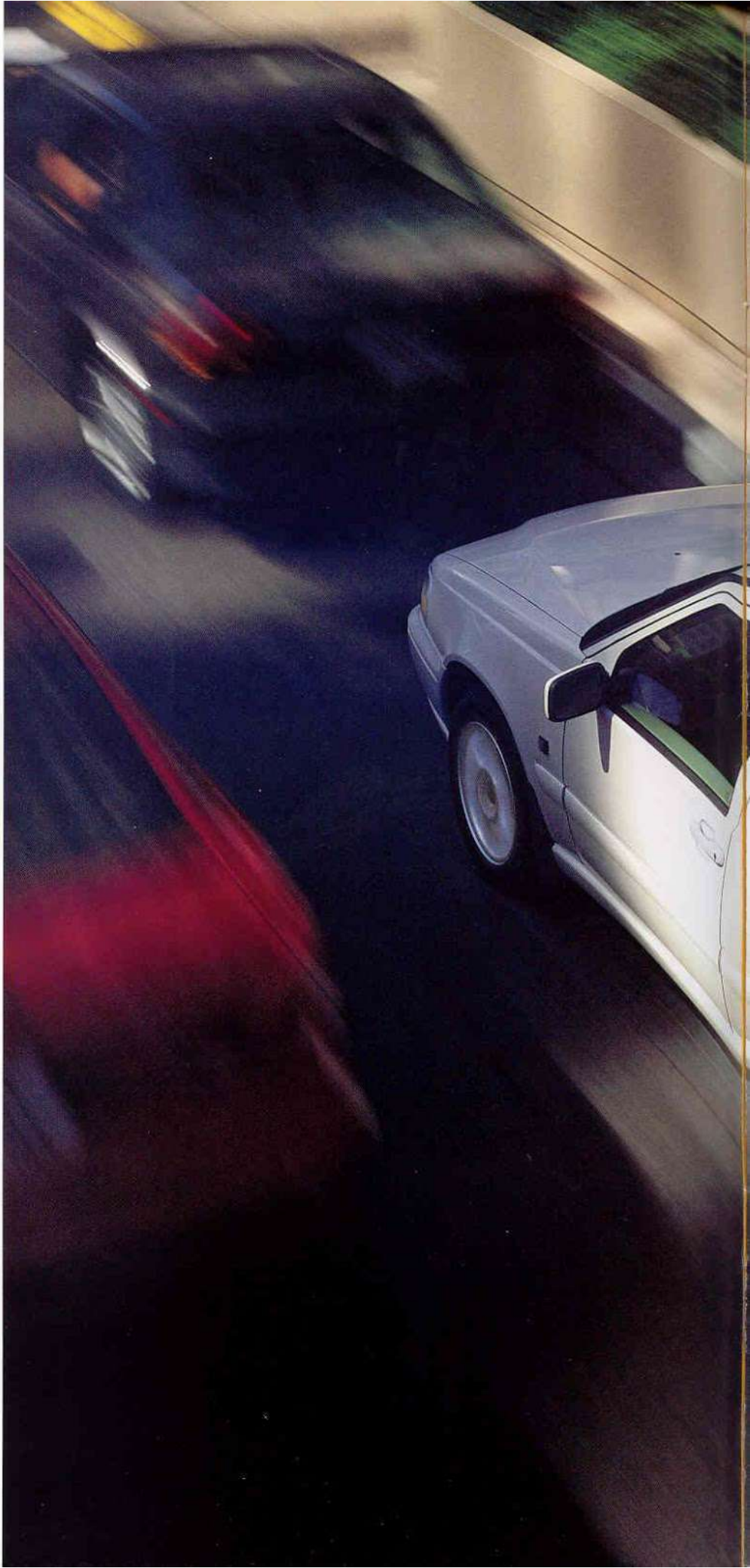
S70 T-5

# S70

Truly a **car for all seasons**, Volvo's S70 expands your opportunities to explore and experience personal freedom and individual driving pleasure. Featured with either **Front-Wheel-Drive** or **All-Wheel-Drive**, the athletic and refined S70 delivers a unique and exciting blend of exhilaration and practicality.

Available in four models, the S70 offers a unique blend of **performance, personal comfort** and **flexibility** that can be tailored to a wide spectrum of individual tastes. Personal taste in interior appointments can be addressed with an extensive array of features including state-of-the-art audio, leather-faced seating and more.

**S70 GLT shown with Sunroof Package.**





# S70

Sliding easily behind the wheel of Volvo's S70, you are welcomed into a **cabin environment** distinguished by its extraordinary sensory appeal. Pleasingly **distinctive** with a clean, efficient and purposeful character expressed elegantly in soft contoured shapes, the S70 interior relaxes the eye and rewards the touch.

Developed with **personal safety** as a primary objective, the S70 surrounds you with a comprehensive and seamlessly integrated system of personal protection.

Spacious and versatile, the S70 provides **comfortable seating** for five adults, with the added convenience of a 40/60 split folding rear seat for added cargo capacity. In addition, a convenient cargo pass-through allows for locked storage of long items such as skis.

**Interior shown with optional equipment.**









**New upholstery available for 1999:  
Vinyl/Fabric split and Volvo V-TEX Vinyl.**



Interior shown with optional equipment.

Upon entering the S70, you are immediately engaged by the open and **appealing cabin environment**.

Large and easily readable analog instruments provide a handsome focus in the sculpted instrument panel. Visually balanced and **ergonomically astute**, all gauges, instruments and controls are positioned to make access to information effortless and driver movement natural.

Seating surfaces covered in a choice of **rich fabrics or leather** add a luxurious feel and visual appeal to the extraordinary comfort of Volvo's **superior upholstery construction**. Throughout the interior, the extensive use of **quality materials** is evident and promotes the S70's distinctive feel of meaningful luxury.

Volvo engineers and designers have attended to the smallest details to ensure an interior design that **rewards the senses** and promotes exceptional **driving pleasure**.

# S70



Pleasing to the touch with broad concave surfaces and a firm positive detent, switches that offer individual control for the windows, side mirrors and door locks reside comfortably by the driver's hand.



The S70's Electronic Climate Control system offers individual temperature controls to allow both driver and front seat passenger to adjust the temperature for their seating position. Once set, ECC will maintain the desired individual temperature settings without further adjustment.

Volvo's S70 adaptive 4-speed automatic transmission with intelligent technology actually refines its operation to suit your driving style. Whether your driving style is aggressive or leisurely, the S70 4-speed adjusts its operation to suit your preference. Thus, regardless of how you like to drive, the S70 transmission is engineered to maximize your driving pleasure.



For all-season traction, the adaptive 4-speed offers winter mode for superior traction on slippery surfaces. When engaged in winter mode, the car starts in third gear for maximum traction. This feature, together with the TRACS traction control, is designed to equip the S70 with extraordinary traction year round.



The eight-way adjustable power front seat with three-position memory lets up to three different drivers tailor the driving position once and recall it every time he or she takes the S70 wheel.

Volvo's 100 watt, eight speaker audio system\* surrounds occupants with audio quality of extraordinary fidelity and range. The AM/FM stereo CD premium system employs the latest advances in audio technology to deliver superior performance for maximum listening pleasure. Acoustically balanced for optimum performance, audio quality benefits from precision speaker placement tailored to the specific cabin environment.

\*Optional





S70 T-5





Like people, automobiles possess character. And experience has shown that the true character of an automobile, like that of a person, comes to the fore when life is threatened. **At Volvo, safety is a fact of life.** For many people that is a fact for which they will be eternally grateful. In personal letters written to Volvo, hundreds of people have expressed their belief that Volvo safety design saved their lives. The concepts that merit such gratitude are born of Volvo's safety design philosophy that makes occupant protection a fundamental tenet of quality design.

# S70

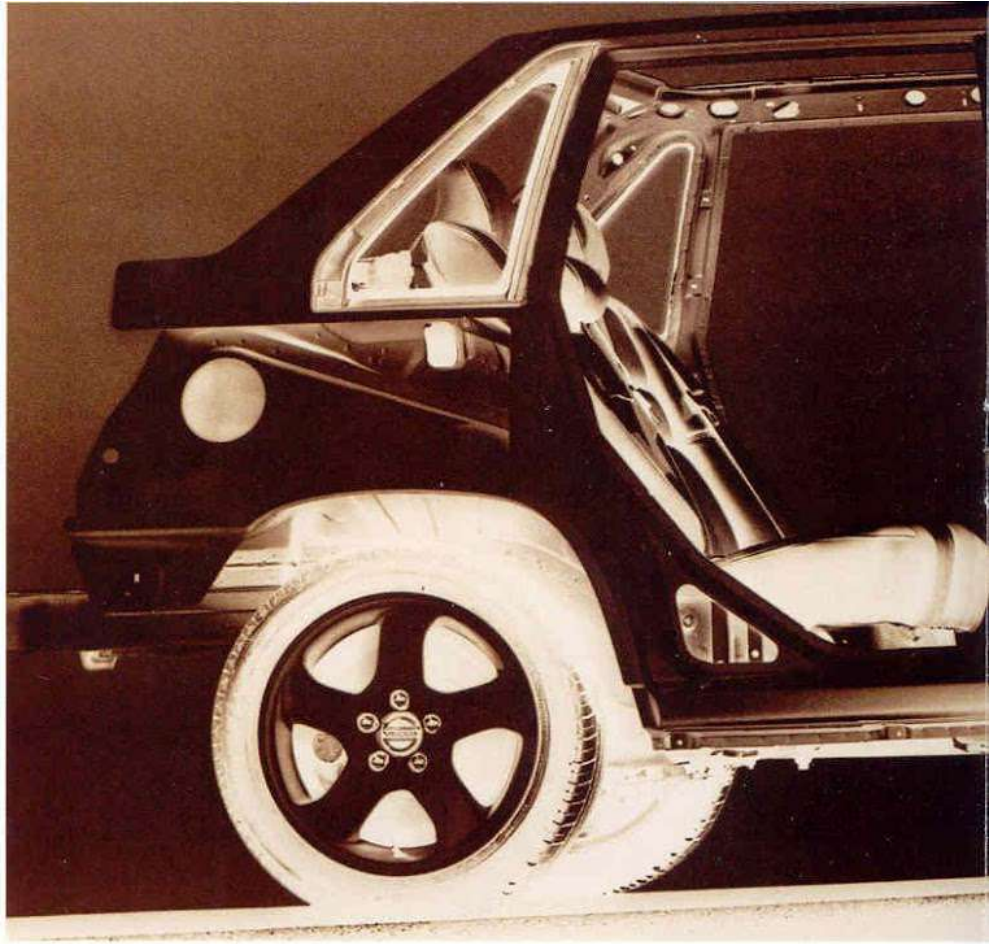
**Safety cage.** The S70, like all new Volvos, surrounds the driver and passengers with a special High Strength Steel safety cage that provides a rigid perimeter of occupant protection. This cage is designed to maintain its integrity under enormous stress.

**Energy absorbing structures.**

The S70 is designed with energy absorbing structures positioned to the front and rear of the occupant safety cage. Their purpose is to progressively yield as the force of impact moves towards the safety cage.

**Transverse engine position.**

Volvo's transverse engine positioning offers significant safety benefits. The significant mass presented by the transversely mounted engine adds to the S70's ability to distribute energy across a broad area for more effective energy management. The transverse positioning also allows for enhanced crashworthiness by employing the large area created by the transverse positioning between the engine and the safety cage as an energy absorbing "crush zone."



**Side Impact Protection System.**

Every S70 benefits from the inclusion of the energy dissipating structures in the Side Impact Protection System (SIPS). Patented by Volvo, the SIPS design is intended to help protect occupants from side impact collisions with a sophisticated and comprehensive system of reinforced steel profiles for added strength and a unique and advanced energy management system that directs the energy of impact away from occupants.

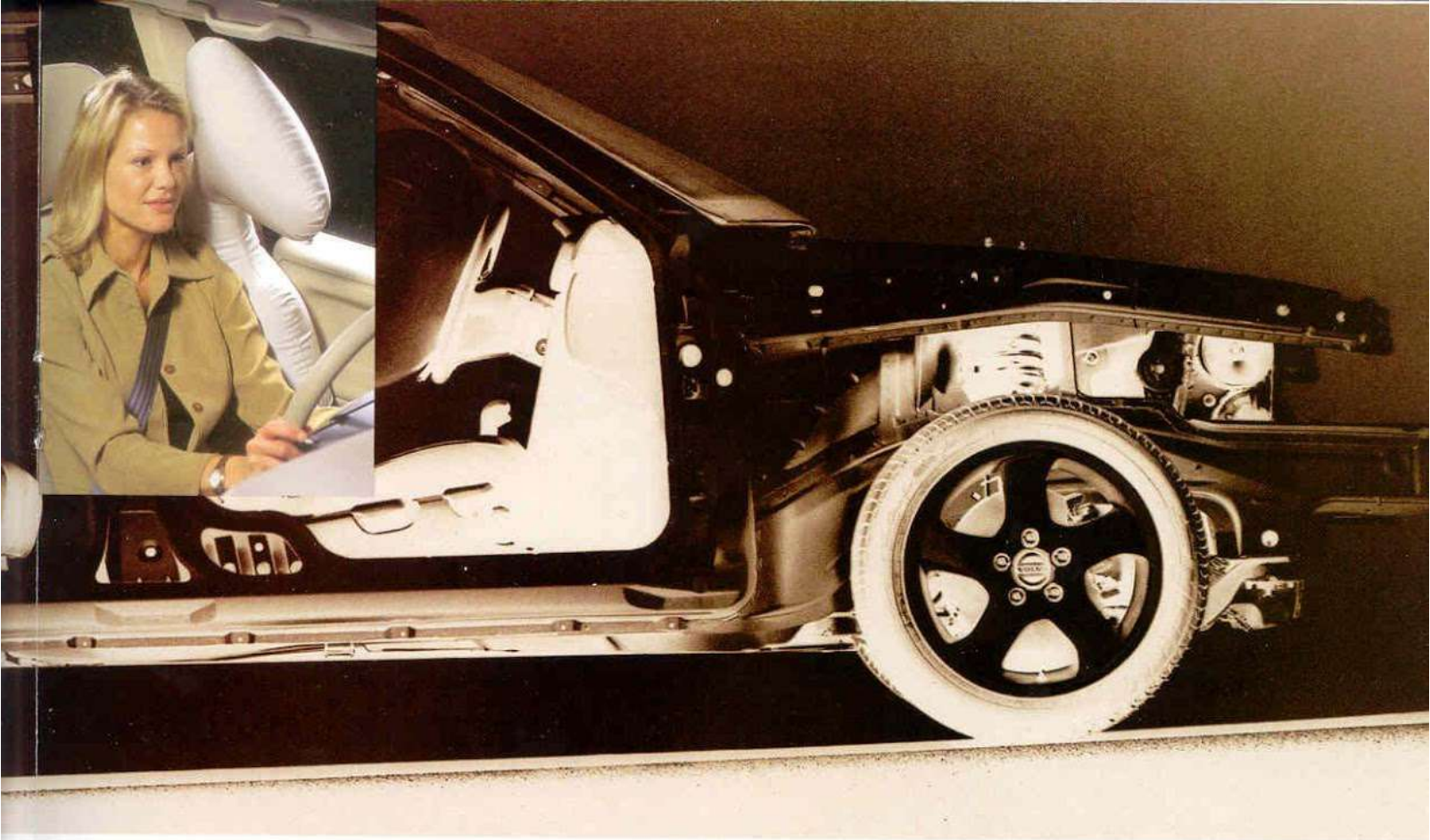
**Three-point seat belts with pretensioners.**

Volvo's seat belt design has been adopted by every major car manufacturer in the world. The Volvo three-point seat belt is intended to evenly distribute the force exerted during an impact across the body.

Pyrotechnic pretensioners afford all belted S70 occupants an additional margin of protection. Triggered by the same sensor that activates the air bag, the pretensioner removes all the slack from the seat belt in the split second between impact and when the occupant's body moves forward.

**Anti-submarine seat design.**

Front and rear S70 seats incorporate a structural cross-member running across the front of the seat cushion. In the event that the momentum of a frontal collision forces a belted occupant forward, the rigid support at the front edge of the seat is designed to help prevent the occupant's body from depressing the seat cushion and sliding down and under the seat belt.



**Supplementary Restraint System.**

Driver and front passenger-side air bags (SRS) are designed to deploy in milliseconds to help dissipate the energy of an individual's forward motion in the event of a frontal or front-angular collision. Volvo seat belts are controlled by sophisticated dual-threshold technology. Volvo's Dual-Threshold Air Bags use special sensors that are integrated with the seat belt pretensioners. The point at which the air bag deploys is determined by whether or not the seat belt is being used. This feature allows the air bag to be deployed only when necessary.

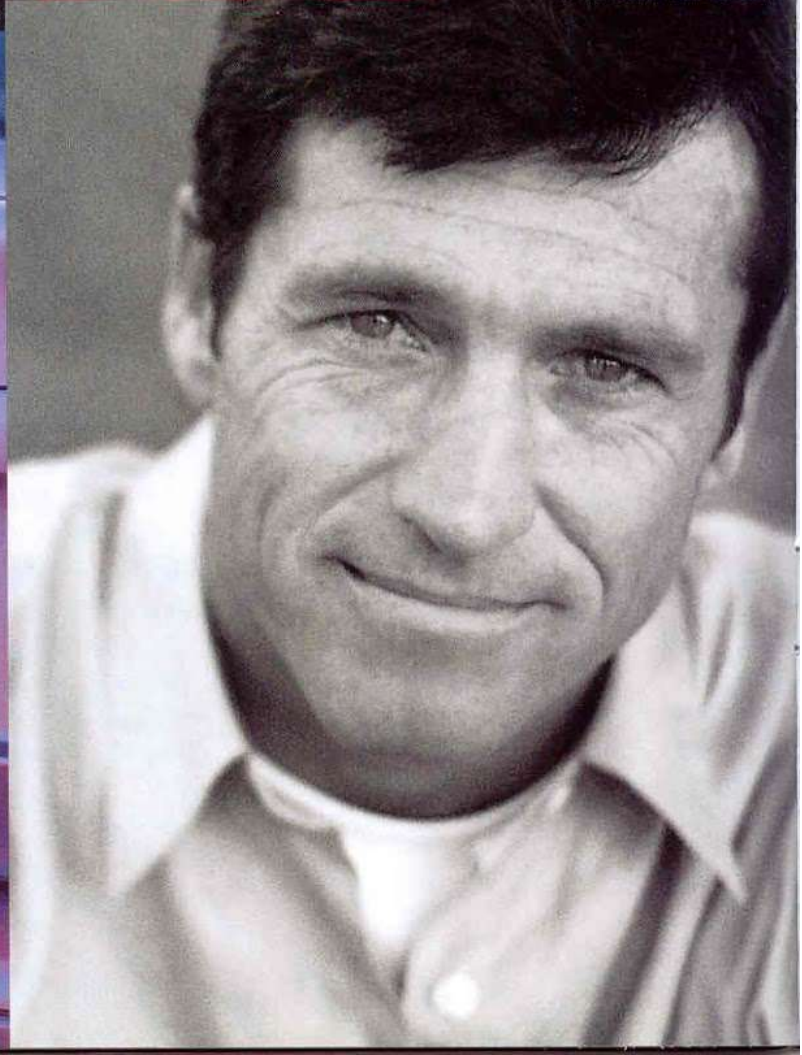
**SIPS bags.** The S70 offers the additional side impact protection of the SIPS air bag. This revolutionary and patented safety feature deploys in the event of certain side impacts. In deploying, the SIPS Bag is designed to act as a barrier between the seat occupant and the door.

**Steering column.** Designed to collapse in stages, Volvo's 3-piece steering column employs an ingenious sequential energy absorbing design to help direct the steering column downward, away from the driver.

**Front supplemental members.** A number of structural members have been incorporated in the front and front side of the S70 to offer additional protection from offset frontal collisions.



A B  
C



**A B Side markers/daytime running lights**

are standard on every S70. Volvo, as a leader in automotive safety innovation, strongly believes that side marker lights and daytime running lights significantly increase awareness in other drivers and represent an opportunity to reduce the number of accidents by making vehicles more conspicuous.

**C High intensity rear fog light.**

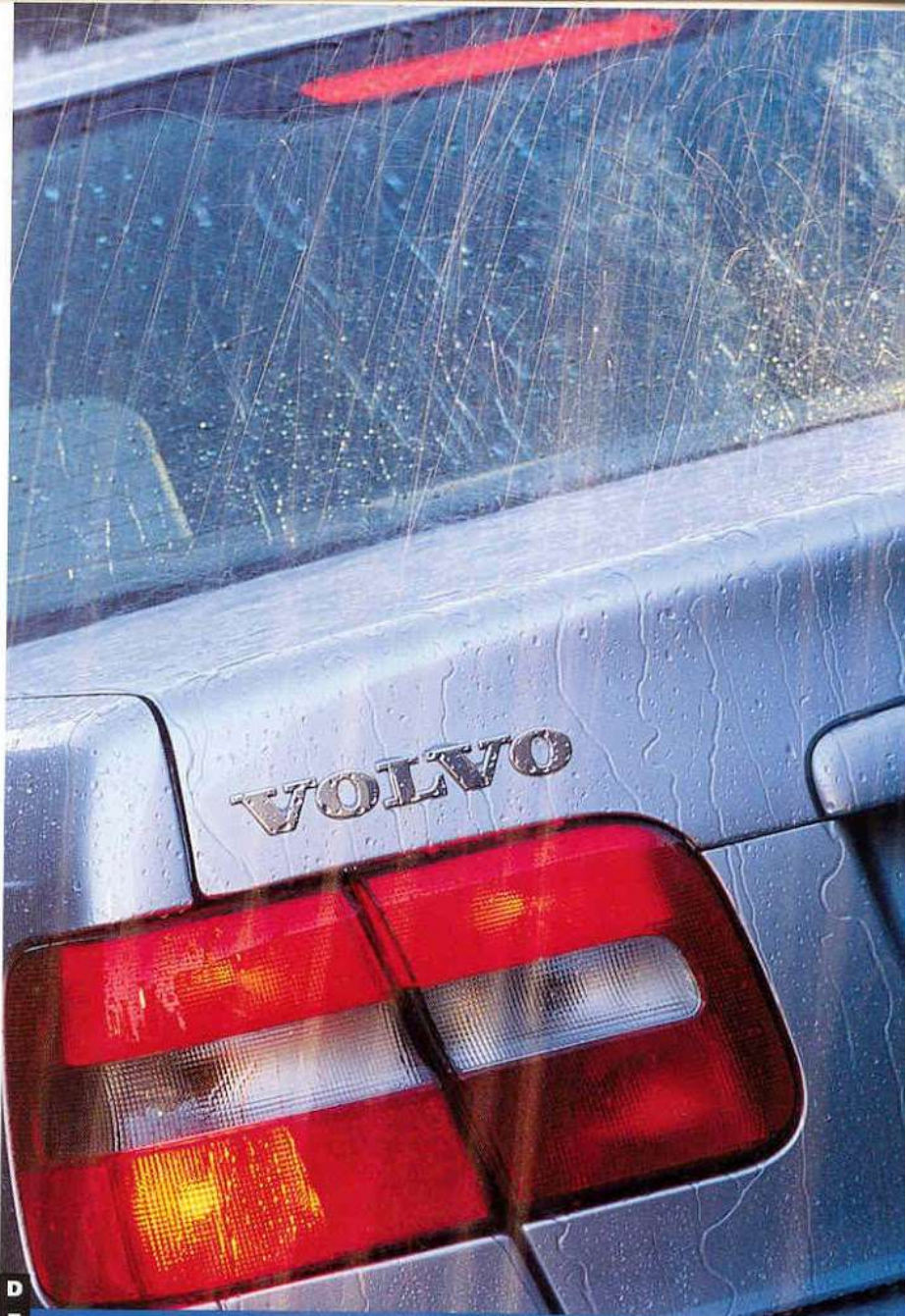
The S70's supplemental lighting reflects Volvo's strong belief in the importance of being seen as well as seeing clearly. A high intensity rear fog light helps make the S70 more visible to drivers approaching from the rear in bad weather.

**D High-mounted rear brake light.**

There is no better accident protection than a design that prevents the accident in the first place. The high-mounted rear brake light is so effective in increasing awareness in other drivers that it is mandated by the government. Volvo's, however, works faster than others. Using light-emitting diodes, the S70's high-mounted stop light reduces the activation time between applying the brake and the illumination of the brake light. Normal brake lights come on in 250 milliseconds. The Volvo brake light comes on in 1 millisecond, a nice advantage when the difference between a crash and a near miss can be a fraction of a second.

**E Headlight washers.**

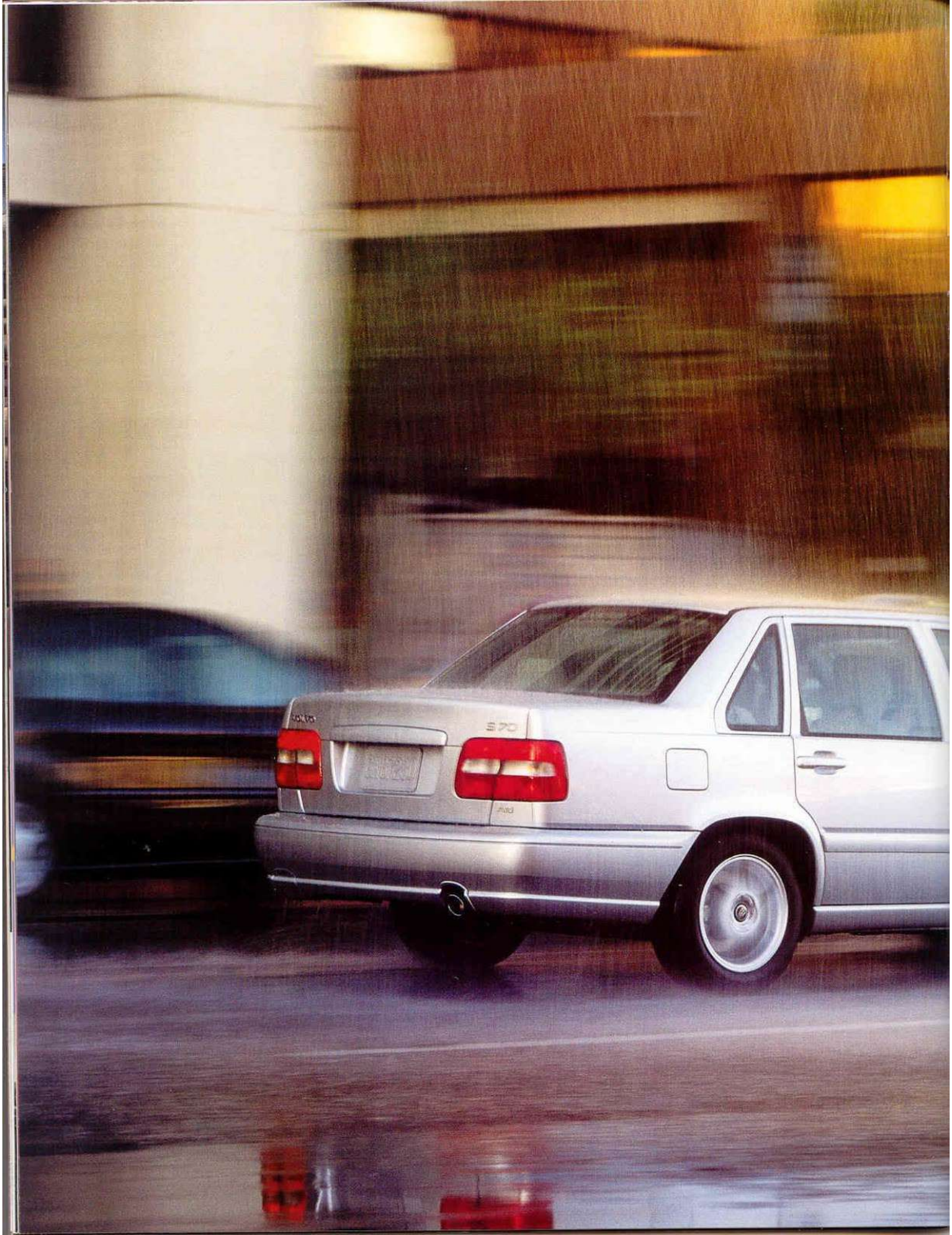
Seeing is as important as being seen. Headlight wiper/washers, optional on the S70, are a valuable safety feature. They wash off road dirt and grime to keep the headlights bright and operating with greater efficiency.



**D**



**E**



# S70

Facing extreme conditions demands ultimate confidence. Volvo's **All-Wheel-Drive** S70 delivers that surety in a world-class sports sedan.

Regardless of weather conditions, the S70 AWD is designed to intelligently allocate power to the gripping wheels for exceptional traction and balanced performance. Highly efficient and totally automatic, Volvo's AWD system delivers **increased control** and **exceptional predictability.**

Overall performance is enhanced with the S70 AWD's beautifully balanced and intelligently executed All-Wheel-Drive concept. Benefiting from its superb traction, the S70 AWD delivers inspired road holding for **superior cornering** and increased peace-of-mind.

Like all Volvos, the S70 AWD is designed to help protect you with a comprehensive occupant safety system. This features Volvo's patented Side Impact Protection System and Supplementary Restraint System as part of an overall safety cocoon that has earned Volvo its reputation as a leader in automotive **safety design.**

## S70 AWD

S70





## **WE CHOOSE TO MAKE A DIFFERENCE WITH VOLVO ENVIRONMENTAL CARE.**

**Volvo is one of the most environmentally responsible cars in the world. This has come about because more than 25 years ago, Volvo made the responsible choice – to adopt a holistic approach to the environment and find ways to reduce the environmental impact of the vehicles we make.**

**This outlook is exemplified in our commitment to automotive excellence, and is one of our core values – Safety, Quality and Environmental Care.**

**We are convinced that it is possible to be environmentally responsible and produce better cars at the same time.**

**Volvo drivers apparently think so, too. Their support of our efforts continues to be reflected in the steady increase in Volvo sales worldwide.**

**In the United States, environmental concerns affect many areas of daily life, and much legislation has been passed to help assure that environmentally harmful substances affecting air, water, soil and living things are reduced to low levels. Volvo not only supports these efforts, but has often shown others how a systematic, long-term effort can pay handsome environmental dividends.**

**Today, Volvo is seen as one of the industrial leaders in environmental care. Over the past two-and-a-half decades, we have continually examined every aspect of design, development, use and recycling of a car. In hundreds of practical applications, we have reduced or eliminated the use of harmful substances in every phase of the manufacturing process and have placed similar requirements on our suppliers.**

Volvo's holistic approach to Environmental Care affects every phase of our operations, from recovery of waste heat from a neighboring oil refinery, to encouraging driving styles that conserve fuel and reduce emissions. Here are just a few of our achievements.

- 1972** Volvo becomes first automaker to declare environmental commitment at United Nations Conference on the Environment.
- 1976** Introduction of Lambda Sond® and the 3-way catalytic converter, a unique sensor that eliminates approximately 95% of regulated emissions (hydrocarbons, oxides of nitrogen and carbon monoxide).
- 1989** Volvo introduced its first Environmental Policy.  
Reduced solvents in corrosion protection materials.
- 1990** All new Volvos are asbestos-free.
- 1991** Our Torslanda paint shop eliminates toxic solvents by implementing an effective water-borne paint system.
- 1992** Volvo introduces the ECC prototype (Environmental Concept Car).
- 1993** Volvo eliminates harmful CFCs from all cars.
- 1996** Volvo tests fleet of Bi-Fuel (methane and gasoline) cars in the U.S.
- 1997** Volvo announces Environmental Specifications for 1998 models available in the United States.  
Volvo's Dialog on the Environment program (Training for Volvo Cars of North America employees).
- 1998** Visit Volvo on the Internet for information about future environmental activities.

**http: [www.volvocars.com](http://www.volvocars.com)**





## THE LIFE CYCLE OF A VOLVO.

At Volvo, **Environmental Care** starts before a car is born and continues until the last components are recycled.

The choices we make help us **produce a better car.**



**Developing with an awareness of environmental impact.**



**Producing with respect for our communities.**



**Driving with environmental responsibility.**



**Recycling to protect our future.**



**Volvo is committed to rewarding your choice of vehicle with a superior ownership experience. To do so demands a comprehensive network of professional support services.**

**1999 Volvo New Car Warranty** provides comprehensive coverage for 4 years/50,000 miles, 80,000 km. Additional warranties provide coverage for corrosion protection, seat belts, air bags, supplemental restraint system, emission systems, spare parts replacement and **Genuine Volvo Accessories**. A 12 month/12,000 mile, 20,000 km, adjustment period is included. Consult the 1999 Warranty Information booklet for details.

**Volvo On Call** provides roadside assistance 24 hours a day anywhere in North America. Should a question pertaining to your Volvo arise, and your Retailer is unable to provide an answer, **Volvo Customer Support** can be contacted at 1-800-458-1552 (U.S.), 1-800-663-8255 (Canada).

Professional Volvo service is assured through the **Volvo Service Support Network** of authorized Volvo Retailers. Here, factory trained technicians, skilled in the latest Volvo technology, using **Genuine Volvo Parts**, maintain your Volvo to the highest standards. **Genuine Volvo Care** provides you with the opportunity for a prepaid maintenance program that adds to your assurance of proper, scheduled vehicle care.

**The Volvo Increased Protection Plan (VIP)** offers the ultimate support program for total peace-of-mind. VIP provides extended service protection against unexpected mechanical difficulties well beyond the expiration of the vehicle's standard warranty.

For those wishing to combine their vacation with the purchase of a new Volvo, the **Volvo Overseas Delivery Program** affords the opportunity to pick up your new Volvo in Europe.

**Volvo Finance North America (VFNA)** makes acquiring a new Volvo a simple and convenient process. We work exclusively with authorized Volvo Retailers nationwide to provide you with an unsurpassed level of service. Nobody knows more about leasing or financing Volvos than we do. VFNA is proud to have been recognized as an industry leader in consumer satisfaction for the past two years in a row. Our **Volvo Value Leasing** and **Volvo Value Financing** products offer a broad array of choices and the freedom to create the financial plan that best fits your lifestyle.

Please consult with your authorized Volvo Retailer for details on any of Volvo's support programs.

## S70 FEATURES

Driver and front passenger supplemental restraint system (air bag and knee bolster)

Seat belts: five, 3-point inertia-reel belts

Front seat belts have automatic height adjustment and pretensioners

Five padded head restraints (center-rear is adjustable)

Anti-lock Brake System (ABS)

Side Impact Protection System

Side Impact Protection System Air Bags

Daytime Running Lights

Side mounted turn indicators

Home Safe Lighting

Immobilizer, encrypted ignition key

Air conditioning/heating system with separate controls for driver and front passenger

SC-813 AM/FM cassette stereo, Dolby, anti-theft circuitry, 100 watt amplifier, six speakers and power antenna

Power windows with "auto down" for driver's window

Dual power mirrors

Cruise control

Central power door locking system, includes trunk and fuel filler lid locks

Adjustable driver's seat with lumbar support

Split vinyl/fabric upholstery

Tilt/telescopic steering wheel

Remote keyless entry

Illuminated, lockable glove box

Illuminated vanity mirrors in driver's and front passenger's sun visors

Tinted windows

Center console with cupholders

Long-load pass through to trunk

Split 40/60 folding rear seat; front passenger seat backrest folds forward

Rear-window defroster with automatic timer

Two-speed windshield wipers with intermittent cycle

Front and rear floor mats

Four cargo tie-down rings

Prewiring for security system and front fog lights

Tool kit

Rear fog light

Four front and rear reading lamps

Two entry lights (in front door foot wells)

Interior cabin light delay

"Open door" traffic warning lights on doors

Luggage compartment light

Outside ambient temperature gauge with freeze warning

Wheel cover

GLT

T-5

AWD

## OPTION PACKAGES

### S70 Sunroof Package includes:

Power glass sunroof with slide and tilt positions and sliding sun shade  
8-way power adjustable driver's seat with 3-position memory  
Dual Zone Electronic Climate Control  
15 inch, six-spoke alloy wheels with 195/60/15 tires  
SC-816 Premium Sound System, in-dash CD, eight speakers, 100 watts  
Trip computer

### S70 GLT includes:

190 hp GLT engine  
4-speed adaptive automatic transmission  
8-way power adjustable driver's seat with 3-position memory  
Dual Zone Electronic Climate Control  
Remote keyless 2-step entry with alarm  
15 inch, six-spoke alloy wheels with 195/60/15 tires

### S70 GLT Sunroof Package includes:

Power glass sunroof with slide and tilt positions and sliding sun shade  
SC-816 Premium Sound System, in-dash CD, eight speakers, 100 watts  
Leather upholstery  
Leather rimmed steering wheel  
Burled walnut wood trim  
Wood shift knob  
Trip computer

### S70 T-5 includes:

236 hp, turbocharged and intercooled engine  
4-speed adaptive automatic transmission or 5-speed manual  
16 inch, five-spoke alloy wheels with 205/55/16 tires  
Dual Zone Electronic Climate Control  
Leather rimmed steering wheel  
8-way power adjustable driver's seat with 3-position memory  
8-way power adjustable passenger seat  
SC-816 Premium Sound System, in-dash CD, eight speakers, 100 watts  
Remote keyless 2-step entry with alarm  
Trip computer

### S70 T-5 Sunroof Package includes:

Power glass sunroof with slide and tilt positions and sliding sun shade  
Leather shift knob  
Leather upholstery  
Dark alloy dash inlay  
Front fog lights  
Trunk lid spoiler  
8-way power adjustable driver's seat with 3-position memory  
8-way power adjustable passenger seat

**S70 AWD includes:**

190 hp GLT engine  
 4-speed adaptive automatic transmission  
 8-way power adjustable driver's seat with 3-position memory  
 Dual Zone Electronic Climate Control  
 Remote keyless 2-step entry with alarm  
 15 inch, five-spoke alloy wheels with 195/65/15 tires  
 Automated All-Wheel-Drive system with viscous coupling  
 TRACS/Traction Control System  
 Multilink independent rear suspension  
 Rear mud flaps

**S70 AWD Sunroof Package includes:**

Power glass sunroof with slide and tilt positions and sliding sun shade  
 SC-816 Premium Sound System, in-dash CD, eight speakers, 100 watts  
 Leather upholstery  
 Leather rimmed steering wheel  
 Burlled walnut wood trim  
 Wood shift knob  
 Trip computer

**TRACS/Cold Weather Package includes:** (available on all models)

Heated front seats  
 Wiper/washer system for headlights  
 Traction Control System  
 STC Stability Traction Control (GLT, T-5 only)

**S70 Factory Options:**

TRACS/Traction Control System  
 Cold Weather Package  
 6.5 x 15 inch, six-spoke alloy wheels with All-season tires  
 Power driver's seat with memory  
 Leather faced upholstery  
 Power passenger seat  
 Wood trim on instrument panel and floor console  
 SC-816 radio/cassette/CD

## SPECIFICATIONS

**Engine**

Transversely mounted, 2.4 liter, 5-cylinder double overhead cam

Horsepower (SAE net): 162 @ 6100 rpm  
 Torque (ft./lbs., SAE net): 162 @ 4700 rpm  
 Compression ratio: 10.3:1

**AWD, GLT:** 2.4 liter, 5-cylinder, exhaust-driven turbocharger with intercooler

Horsepower (SAE net): 190 @ 5100 rpm  
 Torque (ft./lbs., SAE net): 199 @ 1800 rpm  
 Compression ratio: 9.0:1

**T-5:** 2.3 liter, 5-cylinder, exhaust-driven turbocharger with intercooler

Horsepower (SAE net): 236 @ 5100 rpm  
 Torque (ft./lbs., SAE net): 243 @ 2700 rpm  
 Compression ratio: 8.5:1

**Transmission**

5-speed manual transmission with synchromesh on all speeds and reverse  
 Final drive ratio: 4.0

4-speed microprocessor-controlled automatic with lock-up torque converter  
 Final drive ratio: 2.74 (2.54 with turbo engine)

**Suspension**

**Front:** MacPherson strut with asymmetrically mounted coil springs, hydraulic shock absorbers, 20 mm stabilizer bar

**Rear:** Delta-Link semi-independent rear suspension with coil springs, gas-filled shock absorbers, 19.5 mm stabilizer bar

**Rear AWD:** Multilink independent with viscous coupling, locking differential, self-leveling shock absorbers

**Steering**

Power-assisted rack and pinion  
 3.2 turns, lock to lock

**Brakes**

Four-wheel, power-assisted disc brakes  
 Three-channel anti-lock braking system (ABS)

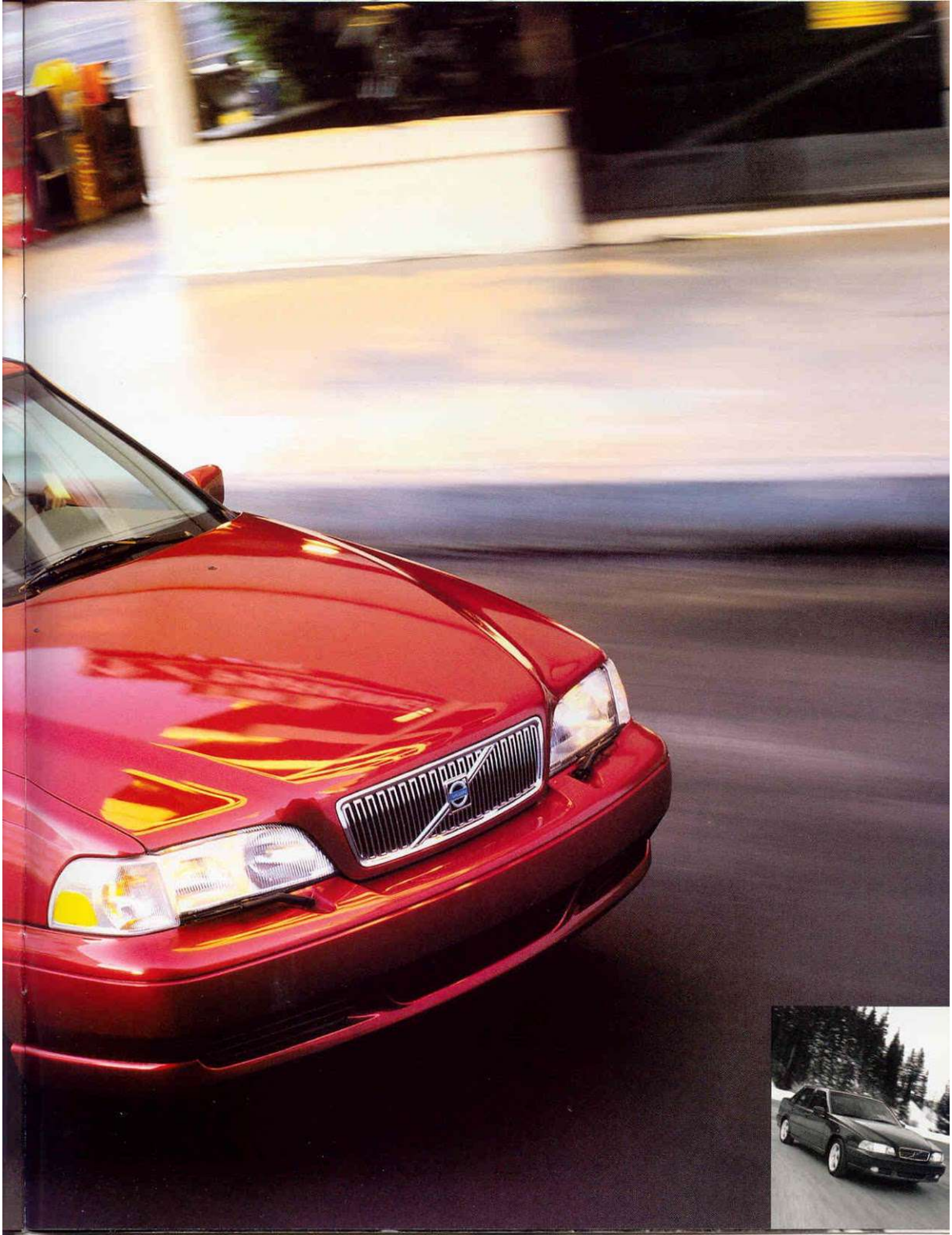
**Dimensions and Weights**

|                              |                |                     |
|------------------------------|----------------|---------------------|
| Wheelbase                    | 104.9 in.      | 266.5 cm.           |
| Overall length               | 185.4 in.      | 470.0 cm.           |
| Overall height               | 55.2 in.       | 140.0 cm.           |
| Overall width                | 69.3 in.       | 176.0 cm.           |
| Front track                  | 59.8 in.       | 152.0 cm.           |
| Rear track                   | 57.9 in.       | 147.0 cm.           |
| Interior: total volume (EPA) | 112.7 cu. ft.  | 3.1 m <sup>3</sup>  |
| Trunk capacity               | 15.1 cu. ft.   | 0.42 m <sup>3</sup> |
| Curb weight                  | 3148-3208 lbs. | 1431-1458 kg.       |



**S70 GLT shown with Sunroof Package and Cold Weather Package.**







## S70 UPHOLSTERY SELECTIONS

|                           |                     |
|---------------------------|---------------------|
| <b>Vinyl/Fabric split</b> | TAUPE               |
|                           | GRAPHITE            |
| <b>V-Tex Vinyl*</b>       | IVORY               |
|                           | GRAPHITE            |
| <b>Leather</b>            | IVORY               |
|                           | TAUPE/LIGHT TAUPE** |
|                           | GRAPHITE            |

\*Not available in Canada

\*\*NOTE: Dark taupe on instrument panel, door panels and trim; light taupe on seats and door panels.

Please check with your Volvo Retailer regarding the availability of color and upholstery combinations



Specifications, features and equipment shown in this catalog are based upon the latest information available at the time of publication. Volvo Cars of North America, Inc. and Volvo Canada Ltd. reserve the right to make changes at any time, without notice, to colors, specifications, accessories, materials and models. For additional information, please contact your authorized Volvo Retailer. **Drive Safely.**

©1998 Volvo Cars of North America, Inc.,  
Rockleigh, NJ 07647

Volvo Canada Limited, North York,  
Ont., M2H 2N7

Printed in USA MY99 G

[www.volvocars.com](http://www.volvocars.com)

**VOLVO**