



**FAME**  
KI-BRAND NEW  
PEHCHAAN

**NEW**  
COLOUR

**NEW**  
REARVIEW

**MIRRORS**

**PREMIUM  
INTERIORS**

**NEW  
BLUETOOTH  
AUDIO**

**NEW**  
GRILLE

**NEW  
DRIVER'S  
SEAT**



**NEW ETIOS**  
**Liva**



STYLE

COMFORT

FAME  
KI BRAND NEW  
PEHCHAAN

SAFETY

PERFORMANCE

**GET NOTICED FOR A BRAND NEW REASON**

It's all about attention. And the new Liva is designed to never go unnoticed. Swanky new interiors. A bold new look. Unmistakably trendy. The Liva will earn you a brand new string of admirers. Take it for a spin, you'll see.





## STYLE KI BRAND NEW PEHCHAAN

You're always ready for the camera. So is the brand new Liva. With smart additions to the interior and exterior that simply demand attention.



### FRONT GRILLE

Bold and breath-taking, the redesigned grille on the Liva, with its chrome finish, leaves nothing to be desired.



### 2 TONE PREMIUM INTERIORS

The dashboard is wonderfully textured. The fabric is a pleasure to feel. And the Ash Brown colours lend a classy new look that's hard to come by.

# STYLE



### REAR COMBI LAMPS

With its distinct 'fin' pattern, the sleek new rear combination lamps set you apart.



### 12 SPOKE ALLOYS

These stylish alloys make sure the spotlight is on you, wherever you go.



### WOOD FINISH DOOR TRIMS

Classy new door trims that draw attention to you even before you climb out.



### INDICATORS ON SIDE MIRRORS

Stylish and very sensible, the new side mirrors with turn indicators are a big hit.



# COMFORT KI BRAND NEW PEHCHAAN

With the Liva, you'll always take fame in your stride. Its convenient features and thoughtful design make sure you're always comfortable.



## ERGONOMIC STEERING WHEEL WITH EPS & TILT

A snazzy steering wheel with audio controls. Enabled with tilt and power steering, to make it easier to navigate through all the attention.



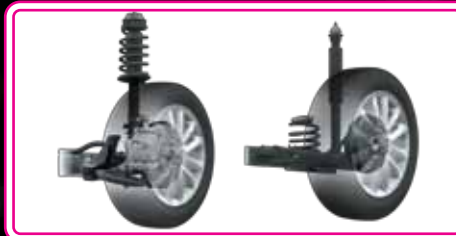
## AC WITH CLEAN AIR FILTERS

Keep cool with fresh air and a silent cabin. And do it in style, with multi-directional vents and blowers.



## 2 DIN AUDIO WITH BLUETOOTH, USB, AUX-IN AND REMOTE

Take your entertainment up a few notches with this swanky system, with Remote, USB, Aux-in and Bluetooth connectivity.



## SUPERB SUSPENSION

Forget about bumps on the road to fame. Thanks to excellent front and rear suspension.



## COMFORTABLE NEW SEATS AND FLAT REAR FLOOR

Sit back and enjoy the new height adjustable driver's seat and adjustable front head rests. The rear floor is designed to give you Best-in-Class cabin space.



## 0.251m³ (251L) BOOT SPACE

All the space you need to accommodate a life of fame.



## COOLED 0.013m³ (13L) GLOVE BOX

For those chilled out drives.



## COMBIMETER WITH NEW BLUE ILLUMINATION

Thanks to this perfectly positioned console, you needn't take your eyes off the road.

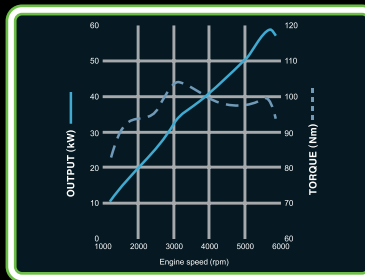


## PERFORMANCE AND SAFETY KI BRAND NEW PEHCHAAN

Because you're always raring to go, the Liva is equipped with a powerful engine and world-class safety standards.



MILEAGE – 17.71 KMPL#



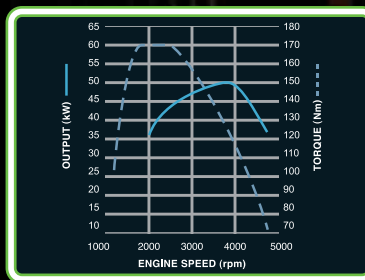
### 0.0012m<sup>3</sup> (1.2L) DOHC PETROL ENGINE AND NEW TRD SPORTIVO ENGINE

Powerful inline 4 cylinder engine. A blend of high performance and fuel-efficiency. Generous torque from 1200 rpm allows excellent in-gear passing acceleration.

More power in the brand new 0.0015m<sup>3</sup> (1.5L) Sportivo petrol engine, to help you go from 0-100 in 11 seconds. And do what you do best – be the centre of attention.



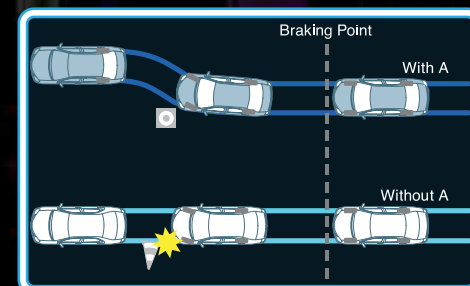
MILEAGE – 23.59 KMPL#



### 0.0014m<sup>3</sup> (1.4L) D-4D DIESEL ENGINE

The refined Common Rail Diesel Engine with intercooler offers an ideal combination of excellent driving performance and unparalleled mileage. Generous torque from 1800 rpm offers excellent initial and in-gear passing acceleration.

\*AS CERTIFIED BY TEST AGENCY UNDER RULE 115 OF CMVR, 1989 UNDER STANDARD TEST CONDITIONS. ACTUAL MILEAGE ON ROAD MAY VARY.



### ABS WITH EBD

ABS with EBD (Electronic Brake Distribution) ensures complete control when you need to slow down.



### IMPACT ABSORBING BODY STRUCTURE

Ensures maximum protection as it absorbs impact across the body, keeping the cabin intact.



### DUAL FRONT SRS AIRBAGS

With SRS airbags for both driver and passenger, you know you're in safe hands every time you take the wheel.

FAME  
KI BRAND NEW  
PEHCHAAN

SAFETY

PERFORMANCE





## ACCESSORIES KI BRAND NEW PEHCHAAN

Jazz up your Liva with these sporty and stylish accessories that are sure to lend you a unique new look.



LEG ROOM LAMP



GEAR KNOB WITH WOOD-LIKE GARNISH  
& SHIFT BOOT CHROME BEZEL



WOODEN PANEL ARMREST



- SIDE PROTECTIVE MOLD WITH CHROME INSERT
- FRONT BUMPER SPOILER ■ ROOF SPOILER ■ HEAD LAMP CHROME GARNISH ■ BUMPER CORNER PROTECTOR
- BODY GRAPHICS ■ SIDE SKIRT ■ ROOF ORNAMENT ■ DOOR SIDE VISOR WITH CHROME
- OUTSIDE REARVIEW MIRROR CHROME COVER ■ RADIATOR CHROME GRILLE

Accessories shown are not a part of standard fitment.

## SPECIFICATIONS

		PETROL		DIESEL	
ENGINE	Type	4 Cylinder 16V, DOHC		4 Cylinder 8V, SOHC, D-4D	
	Size	1197 cc (cm <sup>3</sup> )		1364 cc (cm <sup>3</sup> )	
	Max. Power	59KW (80 PS) @ 5600 rpm		50KW (68 PS) @ 3800 rpm	
	Max. Torque	104 Nm (10.6 kg-m) @ 3100 rpm		170 Nm (17.3 kg-m) @ 1800-2400 rpm	
	Fuel Supply System	Electronic Fuel Injection (EFI)		Common Rail Direct Injection	
	Mileage	17.71 kmpl"		23.59 kmpl"	
TRANSMISSION	Type	5 Speed Manual		5 Speed Manual	
SUSPENSION	Front	MacPherson Strut		MacPherson Strut	
	Rear	Torsion Beam		Torsion Beam	
BRAKES	Front	Ventilated Disc		Ventilated Disc	
	Rear	Drum		Drum	
DIMENSIONS	Overall Length X Width X Height	3775 mm x 1695 mm x 1510 mm		3775 mm x 1695 mm x 1510 mm	
	Wheelbase	2460 mm		2460 mm	
	Ground Clearance	170 mm		170 mm	
	Fuel Tank Capacity	45 Litres		45 Litres	
	Turning Circle Radius	4.8 m		4.8 m	
	Boot Space	0.251 m <sup>3</sup> (251 Litres)		0.251 m <sup>3</sup> (251 Litres)	
	Tyre	I/G-175/65 R14	V-185/60 R15 (Tubeless)	175/65 R14 (Tubeless)	
	Kerb Weight	J-895 kg / G-915 kg / V-930 kg		JD-975 kg / GD-995 kg	
GRADE		I/ID	G/GD	V	
EXTERIOR	Front Grille	Matt Black		Single Chrome	Double Chrome
	Body Coloured Bumpers	✓		✓	✓
	Front Fog Lamps	x		x	✓
	Body Coloured Door Handles	x		✓	✓
	Body Coloured ORVM	x		✓	w/Turn Indicator
	B Pillar Black Out	x		✓	✓
	Intermittent Wiper	x		✓	✓
	Rear Wiper & Washer	x		x	✓
	Full Wheel Caps	✓		✓	x
	12 Spoke Alloy Wheels (4)	x		x	✓
	Roof Mounted Antenna (Foldable)	x		✓	✓
	Chrome Garnish on Boot	x		x	✓
COMFORT & CONVENIENCE	Air Conditioner with Heater & Clean Air Filter	✓		✓	✓
	Power Windows with Driver Side Auto-down	x		✓	✓
	Electric Power Steering w/Tilt Function	✓		✓	✓
	Central Locking	x		✓	✓

GRADE		I/ID	G/GD	V
	Cooled Glove Box	✓	✓	✓
	Front Cabin Lights	✓	✓	✓
	Front Power Outlet (12V)	×	✓	✓
	Adjustable Front Headrest	×	✓	✓
	Removable Rear Headrest	×	✓	✓
	Height Adjustable Driver Seat	×	✓	✓
	Rear Defogger	×	×	✓
	Tachometer	×	×	✓
	Digital Tripmeter	✓	✓	✓
	Audio System (with Remote)	×	2 DIN 1CD MP3 AM/FM w/USB	2 DIN 1CD MP3 AM/FM w/USB, Aux-in & Bluetooth
	Speakers	×	4	4
	Audio Controls on Steering Wheel	×	×	Opt
	Internally Adjustable ORVM	✓	✓	✓
INTERIOR	Dark Grey Interiors	✓	✓	×
	Two-tone Premium Interiors	×	Opt	✓
	Fabric Insert Door Trim	×	Opt	✓
	3 Spoke Steering Wheel	✓	✓	✓ (Sporty Leather Wrapped - Opt)
	Silver Accent on Steering Wheel	×	Opt	✓
	7 Bottle Holders (1 Litre)	✓	✓	✓
	Front & Rear Door Pockets	✓	✓	✓
	Day/Night Inside Rear View Mirror	✓	✓	✓
	Driver & Passenger Sunvisor	✓	✓ (P Side Mirror)	✓ (P Side Mirror)
	Chrome Accented Shift Knob	×	Opt	✓
	Assist Grip with Coat Hook	1	3	3
	Wood Grain Finish on Door Armrest	×	×	✓
	Remote Fuel Lid & Tailgate Opener	✓	✓	✓
SAFETY & SECURITY	Dual SRS Airbags (D+P) & Driver Seatbelt Warning	×	Opt	Opt
	ABS with EBD	JD Only	Opt for G/STD for GD	Opt
	Immobiliser	✓	✓	✓
	Keyless Entry	×	✓	✓
	Door Ajar Warning	✓	✓	✓

\*As certified by Test Agency under rule 115 of CMVR, 1989 under standard test conditions. Actual mileage on road may vary.

Opt - Available as part of Safety Package.



CLASSIC GREY



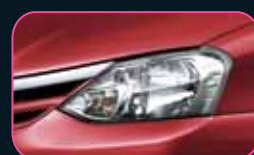
SYMPHONY SILVER



CELESTIAL BLACK



WHITE



VERMILION RED



HARMONY BEIGE



ULTRAMARINE BLUE

Log on to [pointart.mobi](http://pointart.mobi) from your mobile browser to download **PointART**. Capture Toyota logo & experience Toyota's products & services.



**UNMATCHED WARRANTY\***  
3 years / 1,00,000kms  
\*Conditions Apply

For more info, visit [www.toyotabharat.com](http://www.toyotabharat.com), **Talk to Toyota** at 1800-425-0001 (BSNL/MTNL Toll Free No.) or +91-80-66293001 (Direct No.)  
Note: Vehicles pictured and specifications detailed in this brochure may vary between models and equipment. Addition of extra features may change figures in this chart. Toyota Kirloskar Motor Pvt. Ltd. reserves the right to alter any details of specifications and equipment without notice. Actual colour of vehicle body & upholstery might differ slightly from the images depicted in this brochure. Features are grade specific.

is your Etios Liva dealer