



NAVARA



STANDARD EQUIPMENT

The Nissan Navara raises the bar for style and performance in the pick-up market, combining the best of Nissan's crossover leadership with over 80 years of experience in designing and manufacturing robust and dependable pick-ups. Welcome to the versatile and efficient next generation Nissan pick-up - tough as always, smarter than ever.

KEY FEATURES THAT COME AS STANDARD

EXTERIOR

- Mudguards Front & Rear
- Tailgate Spoiler
- External Temperature Sensor

INTERIOR

- 4-way Manual Adjustable Passenger Seat
- Front Armrest
- Front Electric Windows
- Folding Rear Seats (King Cab)

DOOR MIRRORS

- Manual Folding Door Mirrors without Indicator
- Electrically Adjustable Door Mirrors

LIGHTS

- Daytime Running Lights
- Dusk Sensing Headlights with Follow Me Home Function
- High Mounted LED Centre Brake Light

INFOTAINMENT

- Digital Radio (DAB)
- Bluetooth® Telephone Integration
- Bluetooth Audio Streaming
- AUX Socket
- USB Socket
- 3x 12V Power Sockets
- 5" High Definition Full Colour TFT Screen Combimeter
- Steering Wheel Mounted Audio Controls
- Trip Computer

DRIVER AIDS

- Cruise Control and Speed Limiter
- Hill Start Assist (HSA)
- Trailer Sway Assist
- Hill Descent Control (HDC)
- Vehicle Dynamic Control (VDC)
- Electronic Limited-Slip Differential (Elsd) with Cut-Off
- Disc Brakes Front and Rear
- ABS with EBD and Brake Assist

- Power Assisted Steering
- Idle Stop Start (Manual Only)
- 5 Link Rear Suspension With Dual Stage Coil Springs
- Selective Catalytic Reduction (SCR) System - Uses Adblue® To Reduce Nox Emissions

SAFETY

- Nissan Approved Alarm System and Anti-theft Immobiliser
- Remote Central Door Locking
- Airbag: Driver, Front Passenger, Side, Curtain, Knee
- Passenger Airbag Cut Off Switch
- Load Restraint Hooks
- Magnetic locking fuel cap

WHEELS

- 17" Steel Spare Wheel
- Locking Wheel Nuts
- Spare Wheel Lock

VISIA

IN ADDITION TO STANDARD EQUIPMENT

EXTERIOR

- Black Tube Rear Bumper
- Body Coloured Front Bumper
- Silver Front Grille
- Black Door Handles

INTERIOR

- 6-way Manual Adjustable Driver's Seat
- Cloth Seats
- Rearview Mirror with Manual Dimming
- Manual Air Conditioning

DOOR MIRRORS

- Black Door Mirrors

INFOTAINMENT

- 2 DIN Radio
- 2 Speakers (King Cab)
- 4 Speakers (Double Cab)

DRIVER AIDS

- 2.3 dCi 163 PS 6 Manual

WHEELS

- 17" Steel Wheels

OPTIONS*

- C-Channel Movable Tie-down Points
- Guard Frame
- Rear Differential Lock



Image shown in Navara Visia Double Cab.

*Options available at additional cost.

ACENTA

IN ADDITION TO VISIA

EXTERIOR

- Daytime running lights with Chrome Surround
- C-Channel Movable Tie-down Points

INTERIOR

- Chrome Interior Door Handles
- Rear Electric Windows

INFOTAINMENT

- 4 Speakers

SAFETY

- Forward Emergency Braking

WHEELS

- 17" Alloy Wheels

OPTIONS*

- Guard Frame
- Rear Differential Lock



*Options available at additional cost

N-CONNECTA

IN ADDITION TO ACENTA

EXTERIOR

- Black Grained Side Steps
- Chrome Rear Step Bumper with Under Bumper Rail
- Chrome Door Handles
- Rear Privacy Glass

INTERIOR

- Leather Steering Wheel
- Rearview Mirror with Automatic Dimming
- Automatic Dual Zone Conditioning with Pollen Filter
- Rear Ventilation
- Engine Start Push Button
- Nissan Intelligent Key

DOOR MIRRORS

- Chrome Door Mirrors
- Electric Folding Door Mirrors with Indicator
- Heated Door Mirrors

LIGHTS

- Fog Lights with Chrome Surrounds

DRIVER AIDS

- 2.3 dCi 190 PS 6 Manual
- Rear View Camera

INFOTAINMENT

- 8" Touchscreen with NissanConnect 2.0 Entertainment System & Satellite Navigation
- Apple CarPlay & Android Auto

WHEELS

- 18" Alloy Wheels

OPTIONS*

- Rear Differential Lock
- 7 Speed Automatic



*Options available at additional cost

TEKNA

IN ADDITION TO N-CONNECTA

EXTERIOR

- Silver Side Steps
- Silver Roof Rails

INTERIOR

- Heated Front Seats
- 8-way Electronically Adjustable Driver's Seat
- Leather Seats
- Leather Gear Lever and Handbrake

LIGHTS

- LED Headlights with black inlay
- LED Daytime Running Lights
- Automatic Headlight Levelling

SAFETY

- Intelligent Around View Monitor - 4 Cameras with 360 Degree Bird's-eye View
- Rear Parking Sensors

OPTIONS*

- Rear Differential Lock
- Sunroof
- 7 Speed Automatic



*Options available at additional cost.

**Some parts of leather seats may contain artificial leather.

N-GUARD

IN ADDITION TO TEKNA

EXTERIOR

- Black Rear Step Bumper with Under Bumper Rail
- Black Front Grille
- Gloss Black Door Handles
- Black & Blue 'N-Guard' Side Decals
- Black Side Steps
- Black Roof Rails
- Sunroof
- Gloss Black Door Mirrors
- Plastic bed liner

INTERIOR

- Leather & Cloth Seats with Blue Stitching
- Black 'N-Guard' Carpet Mats With Blue Stitching
- Foot-well Illumination

LIGHTS

- Fog Lights with Black Surrounds

WHEELS

- 18" Black Alloy Wheels

OPTIONS*

- Rear Differential Lock
- 7 Speed Automatic



*Options available at additional cost

COLOURS

(S) = Solid
(M) = Metallic (cost option)
(P) = Pearlescent (cost option)



ALABASTER WHITE (S)



FLAME RED (S)



STORM WHITE (P)*



STARBURST SILVER (M)



TWILIGHT GREY (M)



METALLIC BLACK (M)



EARTH BRONZE (M)



SAVANNAH YELLOW (M)



CAYMAN BLUE (M)

*Storm White available as a chargeable option on N-Connecta and Tekna grade, standard on N-Guard.

N-GUARD COLOURS



STORM WHITE (P)

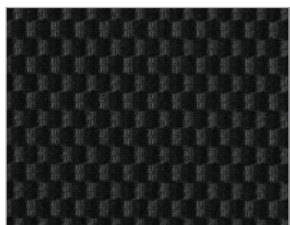


TWILIGHT GREY (M)



METALLIC BLACK (M)

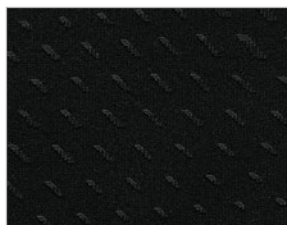
TRIMS



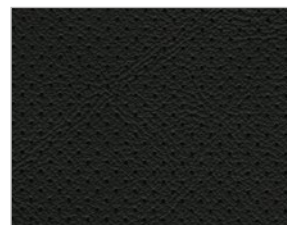
VISIA and ACENTA
GRAPHITE CLOTH



N-CONNECTA
PREMIUM GRAPHITE CLOTH



TEKNA
GRAPHITE LEATHER



WHEELS



VISIA
17" STEEL WHEELS



ACENTA
17" ALLOY WHEELS



N-CONNECTA and TEKNA
18" ALLOY WHEELS



N-GUARD
18" BLACK ALLOY WHEELS

NAVARA TECHNICAL SPECIFICATION

MODEL		VISIA			ACENTA	VISIA	ACENTA	N-CONNECTA	TEKNA	N-GUARD	N-CONNECTA	TEKNA	N-GUARD
Available Grades		KC CHASSIS	DC CHASSIS	KING CAB		DOUBLE CAB							
Engine		dCi163						dCi190					
Transmission		6 speed manual										7 speed auto	
Drivetrain		Part time 4WD											
Seating capacity		4	5	4		5							
ENGINE PERFORMANCE													
Max engine power	PS (kW) @ rpm	163 (120) @ 3,750						190 (140) @ 3,751					
Max engine torque	Nm @ rpm	425 @ 1,250-2,500						450 @ 1,250-2,500					
Emission class		Euro 6D-temp											
No. of cylinders/ configuration		4/ In-line											
No. of valves per cylinder/ configuration		4/DOHC											
Engine displacement	cc	2,299											
Compression ratio		15.1											
Fuel type		Diesel											
CHASSIS													
Frame type		Ladder type											
Front suspension		Double Wishbone and Stabilizer											
Rear suspension		5-Link and Stabilizer											
Steering system		Rack and Pinion Power Assisted											
Turning circle diameter, kerb to kerb	m	12.4											
Brake type (front/ rear)	mm	Ventilated Disc 320 / 308											
Wheel size		17 x 7.0J (45)						18 x 7.0J (45)					
Tyre size		255/65 R17						255/60 R18					
FUEL CONSUMPTION & EMISSIONS													
Fuel tank capacity	litres	73											
AdBlue Tank capacity	litres	18.4											
Fuel consumption**	Urban cycle (MPG)	33.6		33.6 - 34.0				34.4				32.1	
	Extra-urban cycle (MPG)	38.2		45.6 - 46.3				44.8				43.5	
	Combined cycle (MPG)	36.7		40.4				40.4				38.2	
CO ₂ mass emissions**	Urban (g/km)	221		219 - 220				216				233	
	Extra-urban (g/km)	194		163				165				171	
	Combined (g/km)	204		184				184				194	

*Dependent on conversion.
Official fuel consumption figures are produced for comparability purposes; only compare figures with vehicles tested to the same technical procedures. Actual real-world driving results may vary depending on factors such as weather conditions, driving styles, vehicle load or any accessories fitted after registration. WLTP is a new test used for fuel consumption and CO₂ figures, however the CO₂ and fuel consumption figures are based on the outgoing NEDC test cycle which have been back-translated from WLTP to NEDC.
**Fuel consumption & CO₂ emissions data show the minimum and maximum value per grade.

MODEL		VISIA			ACENTA	VISIA	ACENTA	N-CONNECTA	TEKNA	N-GUARD	N-CONNECTA	TEKNA	TEKNA
Available Grades		KC CHASSIS	DC CHASSIS	KING CAB		DOUBLE CAB							
Engine		dCi163						dCi190					
Transmission		6 speed manual									7 speed auto		
Drivetrain		Part time 4WD											
PERFORMANCE													
Max Speed	mph	106						114			111		
Acceleration	0-62mps (seconds)	-	-	12.5				11.2					
Max ascending grade	%	Over 30%											
Wading Depth	mm	600											
VEHICLE DIMENSIONS													
Overall Length	mm	5,120		5,210		5,280		5,330					
Overall Width	without mirrors	1,850											
	with mirrors	2,078						2,085					
Overall Height	mm	1,842	1,844	1,822		1,824		1,828	1,855		1,828	1,855	
Wheelbase	mm	3,150											
Overhangs	Front (mm)	880											
	Rear (mm)	-	-	-	1,225	-	1,300						
Track	Front & Rear (mm)	1,570											
Min.ground clearance	mm	223	220	219				223					
Approach angle	°	30			31								
Departure angle	°	29	30	28				29	27		29	27	
Breakover angle	°	24	24	23									
REAR BED DIMENSIONS (Interior)													
Length	Top/ Floor (mm)	-	-	1,760/1,800		1545/1585							
Width	Max./ Between wheel arches (mm)	-	-	1560/ 1130									
Tailgate height	mm	-	-	498									
Bed floor height from ground(mm)	mm	810	815	810		815							
WEIGHTS & CAPABILITIES													
Gross vehicle weight	kg	3,200	3,250	3,200		3,250							
Min kerb weight	kg	1,890	1,935	2,035		2,070	2,090	2,115	2,135		2,115	2,135	
Max payload*	kg	1,310	1,315	1,165		1,180	1,160	1,135	1,115		1,135	1,115	
Towing capacity	kg	3,500											
Gross train weight	kg	6,130											
Max vertical force on towball	kg	140											
Max roof load	kg	100											

SERVICING & WARRANTY

- [1] Servicing Interval 18,000 miles/ 24 months
[2] Warranty 100,000 miles / 5 years

*Individual payload may vary based on selection of additional specification. Includes 75kg assumption for driver + full fuel tank. Will vary depending on grade standard equipment and option/accessory choices made.

PRICELIST

GRADE	ENGINE	TRANSMISSION	DRIVETRAIN	BASIC PRICE £	VAT £	TOTAL RETAIL £	CV ON THE ROAD PRICE £
CHASSIS KING CAB							
Visia	2.3L dCi 163PS	Manual	4WD	22,975	4,595	27,570	23,295
CHASSIS DOUBLE CAB							
Visia	2.3L dCi 163PS	Manual	4WD	23,825	4,765	28,590	24,145
KING CAB							
Visia	2.3L dCi 163PS	Manual	4WD	23,275	4,655	27,930	23,595
Acenta	2.3L dCi 163PS	Manual	4WD	24,225	4,845	29,070	24,545
DOUBLE CAB							
Visia	2.3L dCi 163PS	Manual	4WD	24,125	4,825	28,950	24,445
Acenta	2.3L dCi 163PS	Manual	4WD	25,075	5,015	30,090	25,395
N-Connecta	2.3dCi 190PS	Manual	4WD	28,000	5,600	33,600	28,320
N-Connecta	2.3dCi 190PS	Automatic	4WD	29,600	5,920	35,520	29,920
Tekna	2.3dCi 190PS	Manual	4WD	29,650	5,930	35,580	29,970
Tekna	2.3dCi 190PS	Automatic	4WD	31,250	6,250	37,500	31,570
N-Guard	2.3dCi 190PS	Manual	4WD	31,400	6,280	37,680	31,720
N-Guard	2.3dCi 190PS	Automatic	4WD	33,000	6,600	39,600	33,320

The Basic prices excludes VAT but includes delivery to the dealership and number plates. The Retail on the Road price includes VAT, delivery to the dealership, number plates, 12 months Government Vehicle Excise Duty (£265 for Light Commercial Vehicles) and Government First Registration Fee of £55.

OPTIONS

		VISIA	ACENTA		N-CONNECTA	TEKNA	N-GUARD	BASIC £
		CHASSIS CAB	KING CAB / DOUBLE CAB		DOUBLE CAB			
Guard Frame		–	○	○	–	–	–	100
Rear Diff Lock		○	○	○	○	○	○	450
Sunroof		–	–	–	–	○	●	400
C-Channel		–	○	●	●	●	●	150
Rear Parking Sensor		–	□	□	□	●	●	300
Solid Paint	Alabaster White, Flame Red	●	●	●	●	●	–	0
Metallic Paint	Twilight Grey, Metallic Black	○	○	○	○	○	●	500
	Starburst Silver, Earth Bronze, Savannah Yellow, Cayman Blue	○	○	○	○	○	–	500
	Electric Blue	–	–	–	–	–	●	0
Pearlescent Paint	Storm White	–	–	–	○	○	●	650

Optional - ○ Standard - ● Not Available - - Dealer Fit - □



2019 NAVARA

VISIAACENTAN-CONNECTATEKNA N-GUARD								
	CHASSIS CAB	KING CAB	DOUBLE CAB	KING CAB	DOUBLE CAB	DOUBLE CAB		
EXTERIOR								
Black Tube Rear Bumper	●	●	●	●	●	-	-	-
Chrome Rear Step Bumper with Under Bumper Rail	-	-	-	-	-	●	●	-
Black Rear Step Bumper with Under Bumper Rail	-	-	-	-	-	-	-	●
Black Front Bumper	●	●	-	-	-	-	-	-
Body Coloured Front Bumper	-	-	●	●	●	●	●	●
Black Front Grille	●	●	●	-	-	-	-	●
Chrome Front Grille	-	-	-	●	●	●	●	-
Black Door Handles	●	●	●	●	●	-	-	-
Chrome Door Handles	-	-	-	-	-	●	●	-
Gloss Black door handles	-	-	-	-	-	-	-	●
Black & Blue 'N-Guard' Side Decals	-	-	-	-	-	-	-	●
Black Grained Side Steps	-	-	-	-	-	●	-	-
Silver Side Steps	-	-	-	-	-	-	●	-
Black Side Steps	-	-	-	-	-	-	-	●
Mudguards Front and Rear	●	●	●	●	●	●	●	●
C-Channel Movable Tie-down Points	-	○	○	●	●	●	●	●
Silver Roof Rails	-	-	-	-	-	-	●	-
Black Roof Rails	-	-	-	-	-	-	-	●
Sunroof	-	-	-	-	-	-	○	●
Rear Privacy Glass	-	-	-	-	-	●	●	●
INTERIOR								
Heated Front Seats	-	-	-	-	-	-	●	●
4-way Manual Adjustable Passenger Seat	●	●	●	●	●	●	●	●
6-way Manual Adjustable Driver's Seat	●	●	●	●	●	●	-	-
8-way Electronically Adjustable Driver's Seat	-	-	-	-	-	-	●	●
Cloth Seats	●	●	●	●	●	●	-	-
Leather Seats	-	-	-	-	-	-	●	-
Leather & Cloth Seats with Blue Stitching	-	-	-	-	-	-	-	●
Black 'N-Guard' Carpet Mats With Blue Stitching	-	-	-	-	-	-	-	●
Leather Steering Wheel	-	-	-	-	-	●	●	●
Leather Gear Lever and Handbrake	-	-	-	-	-	-	●	●
Black Interior Door Handles	●	●	●	-	-	-	-	-
Chrome Interior Door Handles	-	-	-	●	●	●	●	●
Front Armrest	●	●	●	●	●	●	●	●
Front Electric Windows	●	●	●	●	●	●	●	●
Rear Electric Windows	-	-	-	●	●	●	●	●
Rearview Mirror with Manual Dimming	●	●	●	●	●	-	-	-
Rearview Mirror with Automatic Dimming	-	-	-	-	-	●	●	●
Engine Start Push Button	-	-	-	-	-	●	●	●
Nissan Intelligent Key	-	-	-	-	-	●	●	●
Manual Air Conditioning	●	●	●	●	●	-	-	-
Automatic Dual Zone Conditioning with Pollen Filter	-	-	-	-	-	●	●	●
Rear Ventilation	-	-	-	-	-	●	●	●
DOOR MIRRORS								
Black Door Mirrors	●	●	●	●	●	-	-	-
Chrome Door Mirrors	-	-	-	-	-	●	●	-
Gloss Black door mirrors	-	-	-	-	-	-	-	●
Manual Folding Door Mirrors without Indicator	●	●	●	●	●	-	-	-
Electric Folding Door Mirrors with Indicator	-	-	-	-	-	●	●	●
Electrically Adjustable Door Mirrors	●	●	●	●	●	●	●	●
Heated Door Mirrors	-	-	-	-	-	●	●	●

Optional - ○ Standard - ● Not Available Optional -- Dealer Fit - □

	VISIA			ACENTA		N-CONNECTA	TEKNA	N-GUARD
	CHASSIS CAB	KING CAB	DOUBLE CAB	KING CAB	DOUBLE CAB	DOUBLE CAB		
LIGHTS								
Daytime Running Lights	●	●	●	-	-	-	-	-
Daytime running lights with Chrome Surrounds	-	-	-	●	●	●	-	-
LED Daytime Running Lights	-	-	-	-	-	-	●	●
LED headlights	-	-	-	-	-	-	●	●
Black LED headlight inlays	-	-	-	-	-	-	●	●
Front fog lights	-	-	-	-	-	●	●	●
Fog Lights with Chrome Surrounds	-	-	-	-	-	●	●	-
Fog Lights with Black Surrounds	-	-	-	-	-	-	-	●
Auto on/off Headlights with follow me home	●	●	●	●	●	●	●	●
Dusk Sensing Headlights with Follow Me Home Function	●	●	●	●	●	●	●	●
Automatic Headlight Levelling	-	-	-	-	-	-	●	●
High Mounted LED Centre Brake Light	-	●	●	●	●	●	●	●
INFOTAINMENT								
8" Touchscreen with NissanConnect 2.0 Entertainment System & Satellite Navigation	-	-	-	-	-	●	●	●
Apple CarPlay™ & Android Auto™	-	-	-	-	-	●	●	●
2 DIN Radio	●	●	●	●	●	-	-	-
Digital Radio (DAB)	●	●	●	●	●	●	●	●
Bluetooth® Telephone Integration	●	●	●	●	●	●	●	●
AUX Socket	●	●	●	●	●	●	●	●
USB Socket	●	●	●	●	●	●	●	●
3x 12V Power Sockets	●	●	●	●	●	●	●	●
5" High Definition Full Colour TFT Screen Combimeter	●	●	●	●	●	●	●	●
Steering Wheel Mounted Audio Controls	●	●	●	●	●	●	●	●
2 Speakers	●	●	-	-	-	-	-	-
4 Speakers	-	-	●	●	●	●	●	●
DRIVER AIDS								
Cruise Control and Speed Limiter	●	●	●	●	●	●	●	●
Hill Start Assist (HSA)	●	●	●	●	●	●	●	●
Trailer Sway Assist	●	●	●	●	●	●	●	●
Hill Descent Control (HDC)	●	●	●	●	●	●	●	●
Vehicle Dynamic Control (VDC)	●	●	●	●	●	●	●	●
Electronic Limited-Slip Differential (Elsd) with Cut-Off	●	●	●	●	●	●	●	●
ABS with EBD and Brake Assist	●	●	●	●	●	●	●	●
Power Assisted Steering	●	●	●	●	●	●	●	●
Disc Brakes Front and Rear	●	●	●	●	●	●	●	●
Rear Differential Lock	○	○	○	○	○	○	○	○
Idle Stop Start	●	●	●	●	●	Manual	Manual	Manual
5 Link Rear Suspension With Dual Stage Coil Springs	●	●	●	●	●	●	●	●
SAFETY								
Forward Emergency Braking (FEB)	-	-	-	●	●	●	●	●
Rear View Camera	-	-	-	-	-	●	●	●
Intelligent Around View Monitor - 4 Cameras with 360 Degree Bird's-eye View	-	-	-	-	-	-	●	●
Rear Parking Sensors	-	-	-	-	-	-	●	●
Nissan Approved Alarm System and Anti-theft Immobiliser	●	●	●	●	●	●	●	●
Magnetic locking fuel cap	●	●	●	●	●	●	●	●
Remote Central Door Locking	●	●	●	●	●	●	●	●
ISOFIX	●	●	●	●	●	●	●	●
Airbag: Driver, Front Passenger, Side, Curtain, Knee	●	●	●	●	●	●	●	●
Load Restraint Hooks	-	●	●	●	●	●	●	●
Guard Frame	-	○	○	○	○	-	-	-
WHEELS								
17" Steel Wheels	●	●	●	-	-	-	-	-
17" Alloy Wheels	-	-	-	●	●	-	-	-
18" Alloy Wheels	-	-	-	-	-	●	●	-
18" Black Alloy Wheels	-	-	-	-	-	-	-	●
Locking Wheel Nuts	●	●	●	●	●	●	●	●
17" Steel Spare Wheel	●	●	●	●	●	●	●	●



Nissan. Innovation that excites.

visit our website at: www.nissan.co.uk/navara

Dealer stamp:

Follow Nissan Navara on:



5-Year / 100,000 miles (whichever comes first) Manufacturer Warranty for the LCV range (with the exception of e-NV200*).

*e-NV200: The Basic Vehicles Warranty according to 31 of the Warranty Booklet and Maintenance Record is extended to 5-Year (from the warranty start date) / 60,000 miles (whichever comes first) warranty for e-NV200. Body parts and paint excluded during year 4 and year 5. Terms and exclusions apply accordingly, for further information please see Extended Warranty Terms and Conditions. Apart from the aforementioned, all warranty conditions included in the Warranty Booklet and Maintenance Record remain unchanged. Issuer of this Extended Warranty is Nissan International Insurance Ltd.

Every effort has been made to ensure that the content of this publication is correct at the time of going to press (February 2021). This brochure has been produced featuring prototype vehicles exhibited at motor shows. In accordance with the company's policy of continuously improving its products, Nissan International reserves the right to change at any time the specification and the vehicles described and shown in this publication. Nissan dealers will be informed of any such modifications as quickly as possible. Please check with your local Nissan dealer to receive the most up-to-date information. Because of the limitations of the printing processes used, the colours shown in this brochure may differ slightly from the actual colours of the paint and interior trim materials used. All rights reserved. Reproduction in whole or part of this brochure without the written permission of Nissan International is forbidden.

Part Number: 99999-54443. Printed in the UK