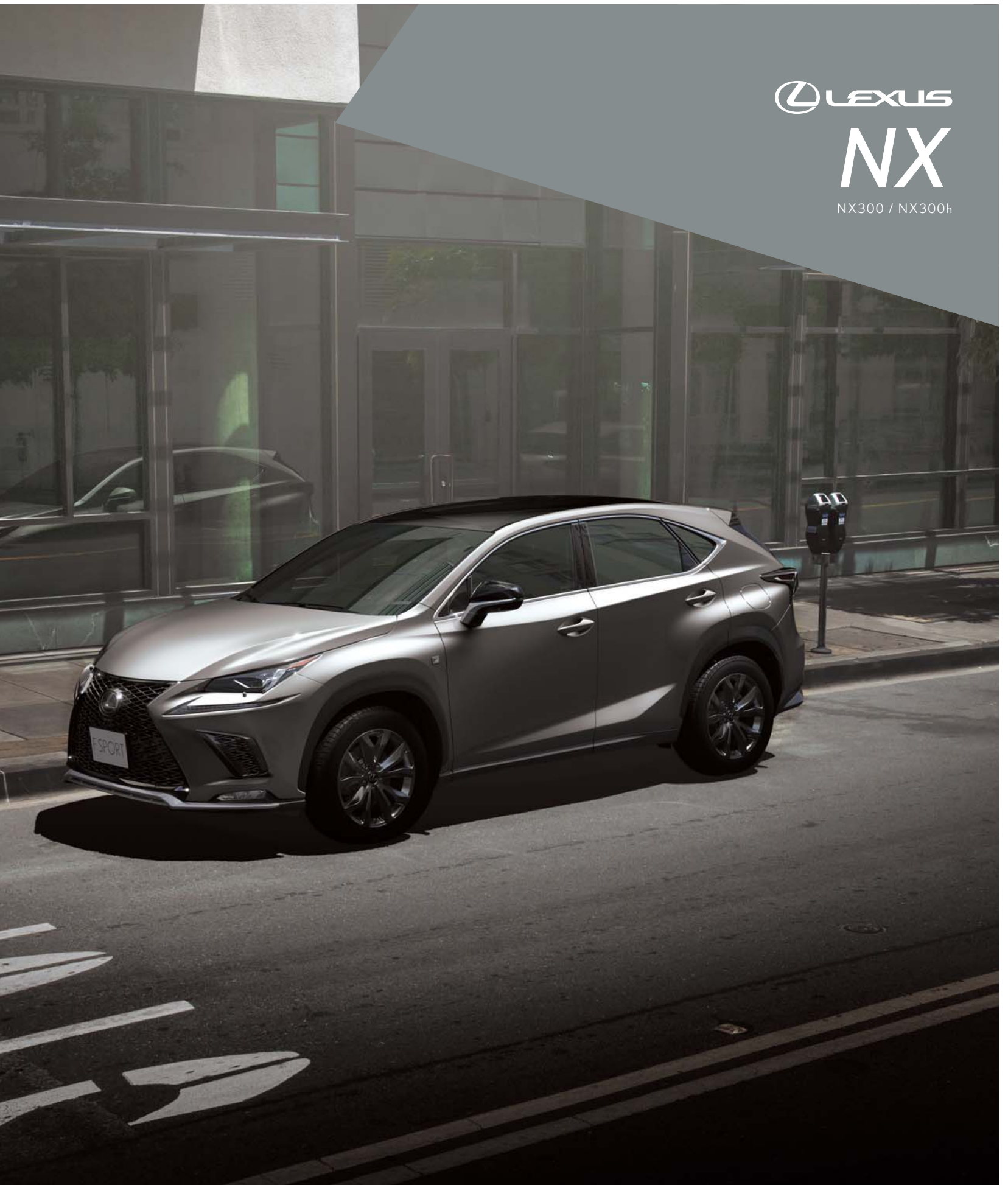


LEXUS

NX

NX300 / NX300h



























**CONCEPT**



Premium Urban Sports Gear.  
The NX injects fresh expressions of individuality,  
exhilaration and utility into urban living.









The NX was developed around the core concept of 'Premium Urban Sports Gear', a next-generation Lexus that applies an urban focus to luxury SUVs. 'Premium Urban' aims to create refined solutions to the mobility demands of city living, offering advanced technologies, excellent environmental performance and refined Lexus features that provide outstanding quality and driving pleasure. 'Sports' expresses a dynamic and active attitude that shapes the aggressive and very individual styling, and injects a sporting edge into driving, with sport-honed acceleration, control and handling. It is intrinsically linked with 'Gear', a meticulous focus on

refining every detail to offer the advanced functionality and effortless utility associated with the very best sports equipment, together with the eye-catching design and embrace of advanced technologies that set iconic 'Sports Gear' apart. The result is a game-changing, urban-focused SUV, with the acceleration, agility and handling to effortlessly negotiate city traffic, the utility to meet the ever-changing needs of an active and dynamic lifestyle, fuel efficiency that embodies environment-aware values, and the sophisticated features and refined detail that is a Lexus hallmark.





## DESIGN



Fusing superb agility and dynamic individuality with spacious functionality creates a fresh sporting spirit.







## EXTERIOR

The fusion of condensed dynamism with edgy solid surfaces powerfully expresses the superb agility and dynamic individuality of this fresh sporting spirit.



## INTERIOR

The blend of functional and structural beauty and attention to detail in the sporty interior further boosts your driving pleasure.





**PERFORMANCE**



Out on the streets, the NX's poise, responsiveness and exhilaration spark a relish for city driving.

3







## Chassis

The foundation of the NX's responsive sporty handling is a lightweight, high rigidity body structure made from hot-stamp, high-tensile steel and aluminum, with strategically positioned reinforcements. The use of innovative production technologies including laser screw welding and body adhesives, together with extensive spot welding, enhances the rigidity of panel joints, and contributes to the excellent handling, refined comfort and quiet ride.



## Pre-loaded differential

This innovative differential pre-loads torque under light loads or low rotational speed, contributing to highly-precise steering for excellent straight-line stability and acceleration performance.



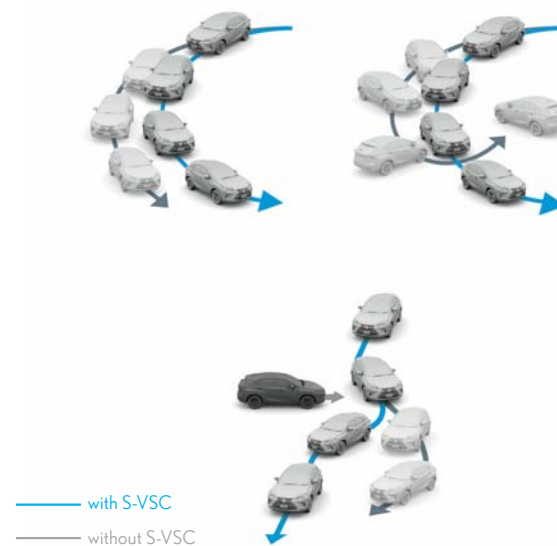
## Aerodynamics

The NX's superb aerodynamics contribute to fuel-efficient performance and quiet comfort in the cabin, even during high-speed driving. Careful attention paid to reducing drag, including an integrated rear spoiler, spats for all four wheels, and the engine, floor, lower arm and rear underbody covers, contributes to a smooth airflow.



## Front and rear suspension

The compact and highly-rigid MacPherson strut front suspension and double wishbone rear suspension were optimized to deliver agile handling and luxurious ride comfort. A close focus on individual components included refining the coil springs, stabilizers, shock absorbers, and suspension bushings.



## S-VSC (Steering-assisted Vehicle Stability Control)

VSC operates in conjunction with the EPS, ABS and TRC to limit and distribute drive power and assist steering torque to help stabilize vehicle behavior and direction, to provide excellent stability and control in various driving conditions.\*

## Drive mode select

Drive mode select provides integrated control of multiple systems to let you tune performance to suit your driving style. On vehicles equipped with AVS (Adaptive Variable Suspension system), you can select and change between Normal, Eco, Sport S and Sport S+ Modes. In addition, Customize Mode enables drivers to set their preferred settings for the powertrain, AVS, EPS (Electric Power Steering) and air conditioning.



\* EPS: Electric Power Steering. VSC: Vehicle Stability Control. ABS: Anti-lock Brake System. TRC: Traction Control System.

Note: Vehicles pictured and specifications detailed in this catalog may vary from models and equipment available in your area. Please inquire at your local dealer for details on the availability of features.





## 2.0-liter direct injection turbocharged engine

This newly-developed engine delivers a sophisticated fusion of exhilarating driving performance and excellent fuel efficiency. The compact high-efficiency twin scroll turbocharger is combined with an Atkinson Cycle engine with Dual VVT-i (Intake side: VVT-iW). To realize optimum combustion, the innovative D-4ST features both direct and port injectors. This advanced Lexus engineering helps generate high torque from low through to high rpm ranges, high level responsiveness, as well as enhancing fuel economy.\*<sup>1</sup>



## 6 Super ECT

The newly-developed, super intelligent 6-speed automatic transmission features advanced drive-force-on-demand control logic that calculates the required engine torque to realize a high level of vehicle control in line with accelerator operation, together with a sophisticated acceleration feeling. Multi-mode Automatic Transmission and G AI-SHIFT control further contribute to driving pleasure.\*<sup>2</sup>

## Dynamic Torque Control AWD

The electronically-controlled system continually varies distribution of drive power to the rear wheels, switching from front-wheel drive to AWD to realize handling stability to suit the driving conditions, together with excellent fuel economy.\*<sup>3</sup>



## Hybrid system

For dynamic driving and exceptional environmental performance, Lexus Hybrid Drive intelligently combines the power of a highly-efficient 2.5-liter gasoline engine with electric power from a high-output motor.



## 2.5-liter 4-cylinder engine

The compact and lightweight Atkinson Cycle engine with VVT-i delivers high performance together with excellent fuel efficiency, quiet operation and significantly reduced emissions.\*<sup>1</sup>



## E-Four (Electric four-wheel drive)

E-Four uses a rear motor that operates independently from the front motor to optimize distribution of front and rear drive force, delivering excellent vehicle stability in a wide range of driving situations.



\*<sup>1</sup> VVT-i: Variable Valve Timing-intelligent. VVT-iW: Variable Valve Timing-intelligent Wide. D-4ST: Direct injection 4 stroke gasoline engine Superior version with Turbo.  
\*<sup>2</sup> ECT: Electronic Controlled Transmission. AI: Artificial Intelligence. \*<sup>3</sup> AWD: All Wheel Drive.



## FEATURES



The NX enhances your quality of life with its confident blend of assertive beauty, intuitive function, and refined operation.

# 4





The 3-eye Bi-Beam LED headlamps that symbolize sharp sporty performance, together with wide L-shaped LED rear combination lamps that seem to stand out from the back door, express an individuality that can't be hidden, even from a distance. In the cockpit, switches are laid out for easy operation to enable the driver to focus on driving.

The spacious interior is designed for relaxation in all seats, enveloping the driver and passengers in comfort. An exhilarating driving experience awaits as soon as you've loaded your bags into a roomy luggage space that accommodates various uses.



#### 3-eye Bi-Beam LED headlamps

The ultra-small 3-eye Bi-Beam LED headlamps combine advanced design with excellent light distribution. LEDs in the sequential turn signal lamps illuminate sequentially in a flow from the inner side to the outside of the vehicle.

#### LED rear combination lamps

The distinctive Lexus L-shaped lamps look like a brilliant crystal, even in daytime. The wide LED sequential turn signal lamps illuminate from the inner to the outer side of the lamp to intuitively convey the turn direction.



#### Door mirrors

Combining form with function, the sculptured door mirrors embody the strength and luxury of the exterior design, reduce wind noise through excellent aerodynamics, and provide an excellent field of view.



#### Panaromic glassroof

The low profile glass expands the feeling of space in the cabin. It opens and closes, at the touch of a button.

#### Hands-free power back door

Even if both hands are full, when carrying the Electronic Key you can open and close the back door automatically by moving your foot under the rear bumper.







#### Multimedia coordination function

This function coordinates the display of information from the multimedia systems on the 10.3-inch EMV (Electro Multi-Vision) display in the center of the instrument panel and the 4.2-inch color TFT (Thin Film Transistor) multi-information display in the meter cluster. For convenience, audio system information, incoming mobile calls, and some navigation on the EMV display can also be displayed on the multi-information display, and controlled using switches on the steering wheel.

#### Meters

The 4-dial meter combines a three-dimensional analog speedometer and tachometer with a digital multi-information display that changes between blue and red illumination to highlight the drive mode selected.

#### Remote Touch Interface

Simple touchpad operation lets users interact intuitively with the navigation and audio systems on the 10.3-inch EMV display, providing easy control of the systems.



#### Wireless charger

This thoughtful charging tray in the center console box enables wireless charging of batteries in Qi-compatible smartphones and electronic devices simply by placing them on the charger tray.





### Luggage space

Contrasting the athletic individuality of the stylish exterior, the ample capacity of the luggage space highlights the practical convenience of the packaging and smart design of the cabin. The back door opens wide to provide easy access to a flexible space that can accommodate three full-set golf bags, or different sizes and combinations of suitcases, while accommodating passengers in the rear seats.



### Power folding rear seats

Enhancing versatility and convenience, the rear seats can be reclined at the touch of a button integrated into each rear seat. They can also be folded flat or upright using switches in the rear seats, luggage space and the driver's-side instrument panel.



### Power back door

Convenient controls for the power door are set in the instrument panel and Electronic Key, as well as a closing switch in the bottom of the door. A memory function lets users set the opening clearance.



### Panoramic view monitor

To help check the surroundings, the system shows a bird's-eye view of the vehicle on the EMV display, using a composite image taken by cameras mounted on the front, sides, and rear of the vehicle. In addition, a see-through view provides an image as seen through the body, and enables a specific point to be selected and enlarged for a more careful check. \*2

Available on Luxury grade only.



### USB ports/mini-jack/power outlets

Two USB ports and a mini-jack support plug-and-play use of music players. Conveniently positioned power outlets in the center console box and luggage space enable the charging of various devices and portable gear.



### Cupholders

The cupholders for the front seats can hold two drink bottles or a handled mug. The grip of the cupholder mats makes it easier to open a bottle lid with one hand.



### Sunglasses holder

The sunglasses holder is conveniently located under the palm rest. The removable magnetic lid stores away in the center console box. A flocked surface inside the holder protects sunglasses against scratching.







**SAFETY**



Anticipating the unexpected, the NX cocoons occupants with advanced active and passive safety measures.

5





## LEXUS SAFETY SYSTEM +



### Lane Tracing Alert (LTA)

The LTA system uses forward facing camera to monitor lane markings and automatically apply steering inputs to keep the vehicle centred in its lane. While driving on highways and automobile-only roads with Dynamic Radar Cruise Control activated, it helps assist steering to keep the vehicle in the lane, reducing the burden on the driver and supporting safe driving.

### LDA (Lane Departure Alert)

LDA alerts the driver of possible lane or road deviations and helps assist steering to avoid them, when LTA is not active.

### Dynamic Radar Cruise Control

In addition to maintaining a constant speed, Dynamic Radar Cruise Control uses the millimeter-wave radar and camera sensors to detect a vehicle driving ahead and maintain an appropriate distance between vehicles.



### Pre-Collision System

When the millimeter-wave radar and monocular camera sensors detect a vehicle ahead, a pedestrian during the day or at night, or a cyclist during the day\*<sup>1</sup> and determine that a collision is likely, it alerts the driver and activates pre-collision brake assist when the driver depresses the brake pedal. If the driver cannot depress the brake pedal, it activates the pre-collision brake to help avoid a collision or mitigate the impact force.

### AHS (Adaptive High-beam System)

The system detects the headlamps of oncoming vehicles, tail lamps of preceding vehicles, and brightness of the surrounding area. When it detects a vehicle within the area illuminated by the high beams, it disables/enables 11 LEDs on each side to minutely adjust the lit and unlit areas, optimizing light distribution. By partially blocking light from the high-beam headlamps so that they don't directly project onto a preceding or oncoming vehicle, the system helps contribute to safe driving at night.



### Blind Spot Monitor System

When the quasi-millimeter-wave radars in the rear bumper detect vehicles in adjacent lanes that aren't visible in the door mirrors, the system activates a warning indicator in the relevant door mirror the moment a vehicle enters this blind spot.



### RCTA (Rear Cross Traffic Alert)

To assist safe reversing, RCTA uses quasi-millimeter-wave radars in the rear bumper to detect approaching vehicles in difficult-to-see areas behind the vehicle. When an approaching vehicle is detected, RCTA alerts the driver using a buzzer and indicator in the relevant door mirror.

### Wide-angle cornering lamps

Wide-angle cornering lamps provide additional illumination in the direction of travel, to the side and above, enhancing pedestrian visibility when turning at intersections.



### SRS airbags

The NX features dual-stage SRS airbags (Front seats), SRS knee airbag (Driver's seat), SRS cushion airbag (Front passenger's seat) that supports seatbelt restraint by lifting the front edge of the seat cushion during a frontal collision, SRS side airbags (Front seats), and SRS curtain shield airbags (Front and rear door windows).<sup>\*2</sup>



\*<sup>1</sup> Pedestrian and cyclist detection is not available in some markets. Please inquire at your local dealer for details.

\*<sup>2</sup> The SRS (Supplemental Restraint System) airbags are supplemental devices to be used with the seatbelts. The driver and all passengers in the vehicle must wear their seatbelts properly at all times. Never install a rear-facing CRS (Child Restraint System) on the front passenger's seat. For a forward-facing CRS, it is recommended you use it in the rear seats. Please do not use accessories for the seats which cover the parts where the SRS side airbags should inflate. Such accessories may prevent the SRS side airbags from activating correctly, causing serious injury (Lexus genuine seat covers are specifically designed for models equipped with the SRS side airbags. To find out about availability in your area, please inquire at your local dealer). The photo shows all the SRS airbags activated for display purposes only (the SRS side and curtain shield airbags only inflate on the side of the collision in an actual accident). For details on these and other important safety features, be sure to read the Owner's Manual carefully.

Note: The systems functions may not operate properly depending on the weather, road and vehicle conditions or other factors. Be sure to read the Owner's Manual carefully. Do not overly rely on these systems, as there is a limit to the performance they can provide. The driver is always responsible for paying attention to the vehicle's surroundings and driving safely.

Vehicles pictured and specifications detailed in this catalog may vary from models and equipment available in your area. Please inquire at your local dealer for details on the availability of features.



## F SPORT



F SPORT evolves the Lexus sport DNA that finds its ultimate expression in the LFA supercar, to enable more drivers to experience its exhilarating performance and unique personality. It further refines the agile, powerful performance of the NX to create a feeling of oneness with the car that comes from its immediate response to the driver's intentions in various driving situations.







A\_Front mesh grille / B\_Front bumper



#### Performance dampers

Performance dampers integrated into the front and rear of the NX F SPORT enhance rigidity and vibration damping performance, realizing exceptional handling stability that is at the heart of sports driving enjoyment.



C\_Aluminum wheels / D\_Door mirrors / E\_Front fender emblems / F\_Rear bumper



G\_Meters & multi-information display / H\_Steering wheel / I\_Aluminum pedals / J\_Shift lever knob / K\_Trim / L\_Scuff plates



#### F SPORT multi-information display

The multi-information display heightens your driving experience by displaying a G sensor with steering angle, accelerator opening and brake hydraulic pressure bars, and a turbo boost meter with oil temperature and pressure gauges.



#### F SPORT meters

Expressing dynamic sports performance, the exclusive analog meters feature full-length illuminated needles, silver needle rings, and distinctive white scales that evolved from the Lexus LFA supercar.



#### F SPORT front seats

The front sports seats blend refined comfort with firm support and excellent holding performance for sports driving. An innovative 'integrated foaming' manufacturing process eliminates wrinkles and movement of the upholstery.



EXTERIOR & INTERIOR  
COLORS

*A palette of colors, from the bold and luminous  
to nuanced and sophisticated,  
lets you express your individuality.*



White Nova Glass Flake <083>\*



Sonic Quartz <085>



Mercury Gray Mica <1H9>



Black <212>



Sonic Titanium <1J7>



Red Mica Crystal Shine <3R1>



Graphite Black Glass Flake <223>



Blazing Carnelian Contrast Layering <4Y1>



Terrane Khaki Metallic Mica <6X4>



Heat Blue Contrast Layering <8X1>\*



Celestial Blue Glass Graphite <8Y6>



Lava Orange Contrast Layering <4W7>\*



18-inch aluminum wheels  
(Executive Package)



18-inch aluminum wheels  
(Luxury Package)



18-inch aluminum wheels  
(F SPORT package)

\* Available on F SPORT package only. ^ Not available on F SPORT package.

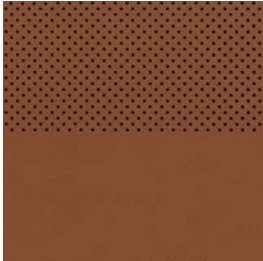
Note: Vehicles pictured and specifications detailed in this catalog may vary from models and equipment available in your area. Please inquire at your local dealer for details on the availability of features.



NX 300 & NX 300h EXECUTIVE PACKAGE <LEXUS NULUXE>



White Ochre

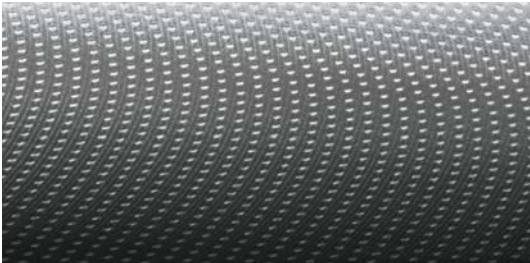


Ochre



Black

<TRIM>



Silver Film



Dark Rose

<COLOUR COMBINATIONS>

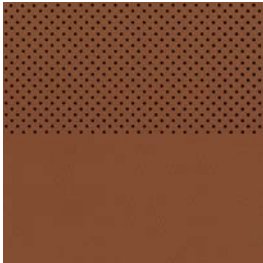
		WHITE OCHRE (SILVER FILM)	BLACK (SILVER FILM)	DARK ROSE (SILVER FILM)	OCHRE (SILVER FILM)
		08	22	32	42
083	WHITE NOVA GLASS FLAKE	•	•	•	•
085	SONIC QUARTZ	•	•	•	•
1H9	MERCURY GREY MC.	•	•	•	•
1J7	SONIC TITANIUM	•	•	•	•
212	BLACK	•	•	•	•
223	GRAPHITE BLACK GF.	•	•	•	•
3R1	RED MICA. CS.	•	•	•	•
4W7	LAVA ORANGE C.L	•	•	•	•
4Y1	BLAZING CARNELIAN CONTRAST LAYERING	•	•	•	•
8X1	HEAT BLUE CONTRAST LAYERING	•	•	•	•
6X4	TERRANE KHAKI METALLIC MICA	•	•	•	•
8Y6	CELESTIAL BLUE GLASS GRAPHITE	•	•	•	•



NX 300 & NX 300h LUXURY PACKAGE <SMOOTH LEATHER>



White Ochre

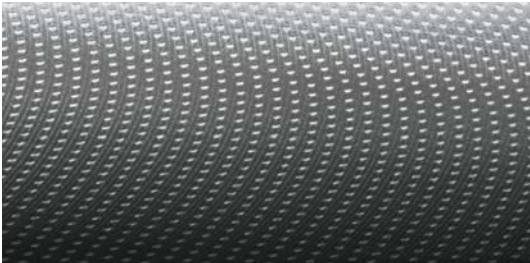


Ochre



Black

<TRIM>



Silver Film



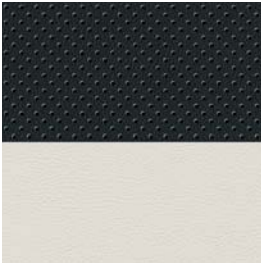
Dark Rose

<COLOUR COMBINATIONS>

		WHITE OCHRE (SILVER FILM)	BLACK (SILVER FILM)	DARK ROSE (SILVER FILM)	OCHRE (SILVER FILM)
		08	22	32	42
083	WHITE NOVA GLASS FLAKE	•	•	•	•
085	SONIC QUARTZ	•	•	•	•
1H9	MERCURY GREY MC.	•	•	•	•
1J7	SONIC TITANIUM	•	•	•	•
212	BLACK	•	•	•	•
223	GRAPHITE BLACK GF.	•	•	•	•
3R1	RED MICA. CS.	•	•	•	•
4W7	LAVA ORANGE C.L	•	•	•	•
4Y1	BLAZING CARNELIAN CONTRAST LAYERING	•	•	•	•
8X1	HEAT BLUE CONTRAST LAYERING	•	•	•	•
6X4	TERRANE KHAKI METALLIC MICA	•	•	•	•
8Y6	CELESTIAL BLUE GLASS GRAPHITE	•	•	•	•

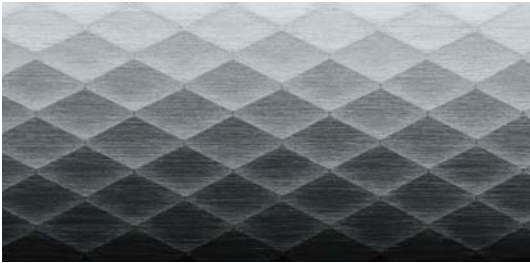


NX 300 F SPORT PACKAGE <SMOOTH LEATHER>



White

<TRIM>

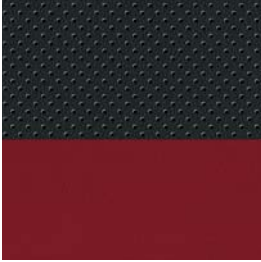


Naguri-Style Aluminium

<COLOUR COMBINATIONS>



Black



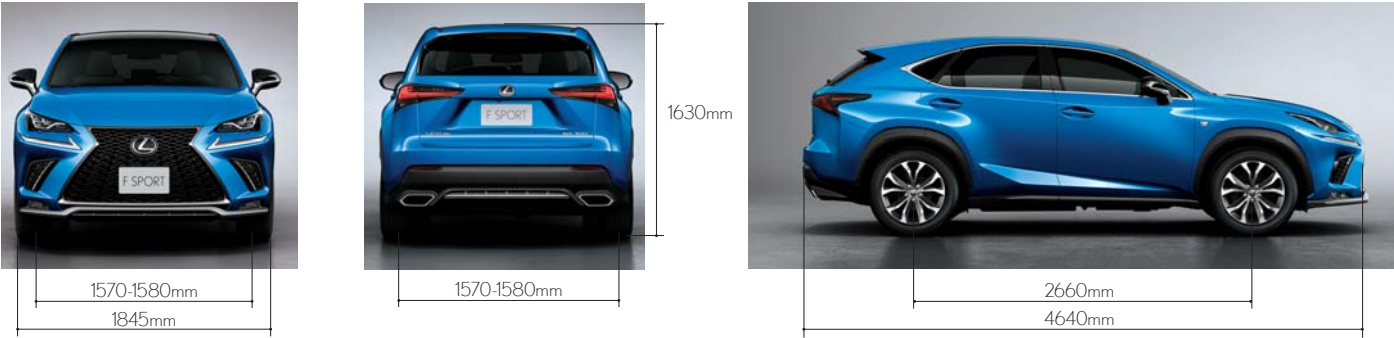
Flare Red

		WHITE (NAGURI-STYLE ALUMINIUM)	BLACK (NAGURI-STYLE ALUMINIUM)	FLARE RED (NAGURI-STYLE ALUMINIUM)
		06	27	37
083	WHITE NOVA G.F.	•	•	•
085	SONIC QUARTZ	•	•	•
1H9	MERCURY GREY MC.	•	•	•
1J7	SONIC TITANIUM	•	•	•
212	BLACK	•	•	•
223	GRAPHITE BLACK GF.	•	•	•
3R1	RED MICA CS.	•	•	•
4W7	LAVA ORANGE CS.	•	•	•
4YL	BLAZING CARNELIAN CONTRAST LAYERING	•	•	•
8X1	HEAT BLUE CL.	•	•	•
6X4	TERRANE KHAKI METALLIC MICA	•	•	•
8Y6	CELESTIAL BLUE GLASS GRAPHITE	•	•	•



SPECIFICATIONS

	NX 300			NX 300H	
ENGINE	EXECUTIVE	LUXURY	F SPORT	EXECUTIVE	LUXURY
Type	In-line 4, 16-Valve DOHC, Twin-scroll Turbocharged and Intercooler with Dual VVT-iW & D-4ST			In-line 4, 16-Valve DOHC with VVT-i	
Drive	All-Wheel Drive			All-Wheel Drive	
Transmission Type	6-speed Automatic Transmission			CVT	
Bore x Stroke	86.0 x 86.0 mm			90.0 x 98.0 mm	
Displacement	1998 cc			2494 cc	
Compression Ratio	10.0			12.5	
Max. Output (Combined)	175 kW (234 bhp)/ 4800 - 5600 rpm			147kW (196 bhp)/ 5700 rpm	
Max. Torque	350 Nm / 1650 - 4000 rpm			210 Nm / 4200 - 4400 rpm	
Max. Speed	200 km/h			180 km/h	
Acceleration (0-100 km/h)	7.1 sec			9.2 sec	
Fuel Consumption	7.9 L / 100km [12.7km /L]			5.7 L / 100 km [17.5km /L]	
Carbon Emissions	184g /km			133 g /km	
VES Banding	C1		C2	B	
NX 300H MOTOR AND BATTERY					
Motor Type Permanent				Permanent Magnet Synchronous Motor	
Max. Output (Front)				105 kW	
Max. Output (Rear)				50 kW	
Max. Torque (Front)				270 Nm	
Max. Torque (Rear)				139 Nm	
Battery Type				NiMH	
Number of Battery Cells				204	
CHASSIS					
Brake (Front)	Ventilated Disc Brake			Ventilated Disc Brake	
Brake (Rear)	Disc Brake			Disc Brake	
Suspension (Front)	MacPherson Strut		MacPherson Strut (AVS)	MacPherson Strut	
Suspension (Rear)	Trailing Arm Double Wishbone		Trailing Arm Double Wishbone (AVS)	Trailing Arm Double Wishbone	
Steering System	Electric Power Steering			Electric Power Steering	
MEASUREMENTS					
Length	4640 mm			4640 mm	
Width (with mirrors)	2130 mm			2130 mm	
Width (without mirrors)	1845 mm			1845 mm	
Height	1630 mm			1630 mm	
Wheelbase	2660 mm			2660 mm	
Tread (Front)	1580 mm		1570 mm	1580 mm	
Tread (Rear)	1580 mm		1570 mm	1580 mm	
Min. Turning Radius (Tyre)	5.7 m			5.7 m	
Kerb Weight	1755 - 1860 kg			1800 - 1895 kg	
Gross Vehicle Weight	2350 kg			2385 kg	
Boot Capacity	500 L			475 L	
Fuel Tank Capacity	60 L			56 L	



All specifications, information and features are accurate at the time of printing and are subject to change without notice.

FEATURES

ULTIMATE COMFORT	NX 300			NX 300H	
	EXECUTIVE	LUXURY	F SPORT	EXECUTIVE	LUXURY
Electrically Adjustable Steering Wheel	•	•	•	•	•
Original Factory-fitted Upholstery	NuLuxe Leather	Smooth Leather	F SPORT Smooth Leather	NuLuxe Leather	Smooth Leather
Memory Seats	—	D	D	—	D
8-Way Power Adjustable Front Seats	•	•	•	•	•
Seat Lumbar Support	—	D	D	—	D
Air Ventilated Front Seats (Heater + Cooler)	—	•	•	—	•
Dual-zone Independent Climate Control	•	•	•	•	•
Door Handles with LED Illumination and Hidden Keyhole	•	•	•	•	•
Panoramic Glass Roof	—	•	—	—	•
INTUITIVE TECHNOLOGY					
SMART Keyless Go (with Card Key)	•	•	•	•	•
Dynamic Radar Cruise Control	•	•	•	—	—
LED Daytime Running Lamps	•	•	•	•	•
Bi-LED Headlamps with Sequential Indicators	•	—	—	•	—
Bi-LED Triple 'L' Headlamps with Sequential Indicators	—	•	•	—	•
LED Front Fog Lamps + Cornering Lamps	•	•	•	•	•
Rain Sensing Wipers	•	•	•	•	•
EC (Electro Chromic) anti-glare Inner Mirror	•	•	•	•	•
Auto-folding EC anti-glare Outer Mirror (with Heater & Reverse-linked tilt Function)	•	•	•	•	•
Electronic Power Steering (EPS)	•	•	•	•	•
Paddle Shifters	•	•	•	•	•
Drive Mode Select Switch (Eco/Normal/Sport/Sport S+/Customise)	3	3	5	4 (EV)	4 (EV)
Engine Start/Stop Technology	•	•	•	—	—
Adaptive Variable Suspension (AVS)	—	—	•	—	—
Active Sound Control	•	•	•	•	•
LEXUS Integrated Display Screen with Navigation	10.3"	10.3"	10.3"	10.3"	10.3"
LEXUS Remote Touch Interface	•	•	•	•	•
Wireless Charger	•	•	•	•	•
Power Folding & Reclining 60:40 Rear Seats	—	•	—	—	•
Hands Free Power Back Door with Kick Sensor	•	•	•	•	•
AUDIO & ENTERTAINMENT					
LEXUS Premium Audio System with 10 Speakers	•	•	•	•	•
Apple CarPlay & Android Auto	•	•	•	•	•
AM/FM Tuner & DVD Player	•	•	•	•	•
Bluetooth Connectivity	•	•	•	•	•
USB Ports/ Aux Jack	•	•	•	•	•
360° PROTECTION					
LEXUS Safety System+ (PCS, DRCC, LDA, LTA)	•	•	•	•	•
Parking Support Brake (Static)	•	•	•	•	•
Automatic High Beam (AHB)	•	—	•	•	—
Parking Assist Monitor (with Distance Guidelines)	•	—	•	•	—
Adaptive High Beam (AHS)	—	•	•	—	•
360° Panoramic View Monitor	—	•	—	—	•
Blind Spot Monitor (BSM) + Rear Cross Traffic Alert (RCTA)	—	•	•	—	•
8 SRS Airbags	•	•	•	•	•
Control Systems: ACA / ABS / EBD / TRC / VSC/ Hill-Start Assist	•	•	•	•	•
LEXUS Parking Assist (8 Sensors)	•	•	•	•	•
Electronic Park Brake (EPB)	•	•	•	•	•
ISOFIX Anchors	•	•	•	•	•
RIMS & TYRES					
225 / 60 / R18 Aluminium Wheels (5 Twin-Spoke)	•	—	—	•	—
225 / 60 / R18 Aluminium Wheels (Two-toned 5 Twin-Spoke)	—	•	—	—	•
235 / 55 / R18 Aluminium Wheels (Dark Finish 5 Twin-Spoke)	—	—	•	—	—
SpareTyre	•	•	•	•	•

Note: Vehicles illustrated, specifications and equipment detailed in this specification sheet may vary. Lexus reserves the right to alter any details of specifications and equipment without notice. Please consult your Lexus sales consultant for details.





**BORNEO MOTORS (SINGAPORE) PTE LTD** | 33 LENG KEE ROAD SINGAPORE 159102 TEL: 66-31-1388 EMAIL: CR@INCHCAPE.COM.SG

**LEXUS BOUTIQUE** | MON-FRI: 9AM TO 6PM SAT: 9AM TO 7PM SUNDAY & PUBLIC HOLIDAYS: 10AM TO 6PM

**LEXUS SERVICE CENTRE** | MON-FRI: 8AM TO 5PM SAT: 8AM TO 12PM CLOSED ON SUNDAY & PUBLIC HOLIDAYS

**[WWW.LEXUS.COM.SG](http://WWW.LEXUS.COM.SG)**