

# The 2022 Soul



Movement that inspires



## It's time to up your game.

The 2022 Soul takes its game - and yours - to a whole other level of wow factor. That starts with an assertive front end and includes features that make the Soul not only a joy to look at, but a thrill to drive. Even better, you can pack in the fun with Soul's impressive versatility and cargo capacity. Up your game with the 2022 Soul.



**10.25" multimedia interface<sup>1,4</sup>**  
with integrated touch-screen navigation.



**Heads-up display (HUD)<sup>1</sup>**  
subtly projects key driving information on a secondary screen above the steering wheel.

## Stay connected and informed.

The modern cockpit has a clean, sleek design, intuitively placed controls, and the features you want to keep you comfortably in control.

<sup>1</sup> Available feature. See features page or visit [kia.ca](http://kia.ca) for full details. International model shown.



**Wireless charging<sup>1,3</sup>**  
keeps your smartphone fully charged while you're on the road.



**Smart key with push-button start<sup>1</sup>**  
lets you start your vehicle with your key in your pocket.



## A space to thrive in.

Soul is designed with the premium features to satisfy your high standards for comfort, fresh air, modern aesthetics, and, of course, plenty of room to stretch out and claim as your own.



**Sound-reactive speaker lights<sup>1</sup>**  
pulse to the beat of your favourite music.



**Power sunroof<sup>1</sup>**  
for that wide-open, blue sky feeling.

<sup>1</sup> Available feature. See features page or visit [kia.ca](http://kia.ca) for full details.

# Be up for anything.

Soul has loads of space to make room for all your gear. It's not just the capacity that's welcoming - the space is so versatile and flexible, it easily adapts to whatever your agenda demands.



## Easy cargo access

for up to 1,758 litres (62.1 cu. ft.) of cargo space.

## Dual-level cargo floor

lets you adapt the cargo area to your needs.

## 60:40 split-folding rear seats

provide more versatility for passengers and cargo.

# Safety covered from every angle.

Using the latest sensing and processing technology, the Soul helps you stay aware of your position on the road, and can even step in and prevent collisions.



## Forward collision avoidance assist<sup>1,2</sup>

is designed to detect and alert you if a potential front collision is imminent, and can also automatically apply the brakes, if necessary.

## Blind-spot detection system<sup>1,2</sup>

uses radar to detect vehicles in your blind spot and can give visual and audible alerts to help you avoid hazardous lane changes.

## Rear cross traffic alert and collision avoidance assist<sup>1,2</sup>

uses radar sensors to monitor the area to the left and right, and warn or even actively apply the brakes if there's traffic approaching from either side.

## Driver attention alert<sup>1,2</sup>

monitors for driving abnormalities and provides fatigued drivers with an alert.

<sup>1</sup> Available feature. See features page or visit [kia.ca](http://kia.ca) for full details.

# Features

## LX

EXTERIOR	SAFETY	TECHNOLOGY	COMFORT
<ul style="list-style-type: none"> <li>• 16" steel wheels with covers</li> <li>• Temporary spare tire</li> <li>• Automatic headlights</li> <li>• Halogen headlights</li> <li>• Solar glass</li> <li>• Rear privacy tint glass</li> <li>• Body coloured sideview mirrors</li> <li>• Heated sideview mirrors</li> <li>• Power adjustable sideview mirrors</li> <li>• Body coloured door handles</li> <li>• Splash guards</li> </ul>	<ul style="list-style-type: none"> <li>• 6 airbags (dual advanced front, dual side curtain, dual front side seat)</li> <li>• Electronic stability control (ESC)</li> <li>• 4-wheel anti-lock braking system (ABS)</li> <li>• Hill-assist control (HAC)</li> <li>• Tire pressure monitoring system (TPMS)</li> <li>• Low washer fluid warning indicator</li> <li>• Central door lock</li> <li>• Immobilizer</li> <li>• Rearview camera<sup>2</sup></li> </ul>	<ul style="list-style-type: none"> <li>• 8" Display audio</li> <li>• AM/FM/MP3 radio</li> <li>• 6-speaker audio</li> <li>• Bluetooth® hands-free cell phone connectivity<sup>3,6</sup></li> <li>• Apple CarPlay® and Android Auto™ smartphone integration<sup>3,8,9</sup></li> <li>• Steering wheel-mounted audio controls</li> <li>• 3.5" supervision LCD/TFT instrument cluster</li> <li>• Remote keyless entry</li> <li>• Power windows</li> </ul>	<ul style="list-style-type: none"> <li>• Air conditioning</li> <li>• Cloth seats</li> <li>• Heated front seats</li> <li>• 60:40 split-folding rear seats</li> <li>• Dual-level cargo floor</li> <li>• Tilt and telescopic steering wheel</li> <li>• Sliding and illuminated sun visors</li> </ul>

## EX: adds to or upgrades from LX

EXTERIOR	SAFETY	TECHNOLOGY	COMFORT
<ul style="list-style-type: none"> <li>• 16" alloy wheels</li> <li>• Halogen bi-function projection headlights</li> <li>• LED positioning lights</li> <li>• LED daytime running lights</li> <li>• Projection fog lights</li> <li>• Sideview mirror signal repeaters</li> <li>• Rear silver bumper accent</li> <li>• Gloss black and chrome grille</li> </ul>	<ul style="list-style-type: none"> <li>• Lane keeping assist (LKA)<sup>2</sup></li> <li>• Driver attention alert system (DAA)<sup>2</sup></li> <li>• Blind-spot detection system (BSD)<sup>2</sup></li> <li>• Rear cross-traffic collision alert and avoidance assist<sup>2</sup></li> <li>• Forward collision-avoidance assist (FCA)<sup>2</sup></li> <li>• Heated washer nozzle</li> </ul>	<ul style="list-style-type: none"> <li>• USB charging port</li> <li>• Cruise control</li> <li>• Wireless phone charger<sup>3</sup></li> <li>• Express up/down front windows</li> <li>• Obstacle-detecting front windows</li> </ul>	<ul style="list-style-type: none"> <li>• Heated steering wheel</li> <li>• Leather-wrapped steering wheel</li> <li>• Leather-wrapped gear shift knob</li> <li>• Rear centre armrest</li> </ul>

## EX+: adds to or upgrades from EX

EXTERIOR	COMFORT
<ul style="list-style-type: none"> <li>• 17" alloy wheels</li> <li>• LED headlights</li> <li>• LED fog lights</li> <li>• LED taillights</li> <li>• LED high mount stop lamp</li> <li>• Power sunroof</li> </ul>	<ul style="list-style-type: none"> <li>• Cloth and leather seats (synthetic)</li> <li>• Adjustable rear seat headrests</li> </ul>

## EX PREMIUM: adds to or upgrades from EX+

EXTERIOR	TECHNOLOGY	COMFORT
<ul style="list-style-type: none"> <li>• 18" alloy wheels</li> </ul>	<ul style="list-style-type: none"> <li>• 10.25" multimedia interface with integrated navigation<sup>4</sup></li> <li>• SiriusXM satellite radio<sup>6</sup></li> <li>• Auto-dimming rearview mirror</li> <li>• UVO Intelligence™ connected car services<sup>3,5</sup></li> <li>• Smart key with remote and push-button start</li> <li>• Sound-reactive mood lights</li> </ul>	<ul style="list-style-type: none"> <li>• Dual-zone automatic climate control</li> <li>• Gloss black and leather interior accents</li> </ul>

## GT-LINE LIMITED: adds to or upgrades from EX PREMIUM

EXTERIOR	SAFETY	TECHNOLOGY	COMFORT
<ul style="list-style-type: none"> <li>• Sport bumpers</li> <li>• Side sill accents</li> <li>• Rain sensing wipers</li> </ul>	<ul style="list-style-type: none"> <li>• Advanced forward collision-avoidance assist (FCA)<sup>2</sup></li> </ul>	<ul style="list-style-type: none"> <li>• Heads-up display (HUD) system</li> <li>• Harman Kardon® premium audio system<sup>10</sup></li> <li>• Smart cruise control (SCC)<sup>2</sup></li> </ul>	<ul style="list-style-type: none"> <li>• Leather seats</li> <li>• Multi-directional power adjustable driver's seat</li> <li>• Multi-directional power adjustable passenger seat</li> <li>• Heated rear seats</li> <li>• Air-cooled front seats</li> <li>• Sport steering wheel (D-shaped)</li> <li>• Red stitching and interior accents</li> </ul>

# Specifications

## Mechanical

All trims	
Engine type	2.0L 4-cylinder MPI
Horsepower	147 hp @ 6,200 rpm
Torque	132 lb.-ft. @ 4,500 rpm
Transmission	Intelligent Variable Transmission (IVT)
Drive type	Front wheel drive (FWD)
Recommended fuel	Regular unleaded

## Measurements

All trims	
Fuel tank capacity	54 L
Cargo capacity, rear seats folded	1,758 L (62.1 cu. ft.)
Cargo capacity, rear seats up (with rear cargo floor lowered)	663 L (23.4 cu. ft.)

## Fuel consumption

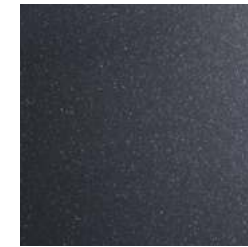
All trims	
City / Highway (L/100km)	8.5 / 7.0

Please visit [kia.ca](http://kia.ca) for full vehicle specifications.

# Exterior colours



Snow White Pearl\*



Gravity Grey\*



Onyx



Inferno Red\*

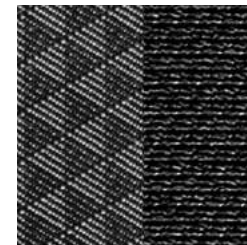


Neptune Blue\*

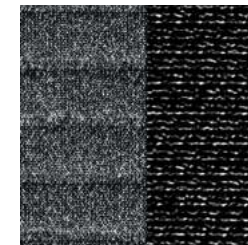


Lunar Orange\*

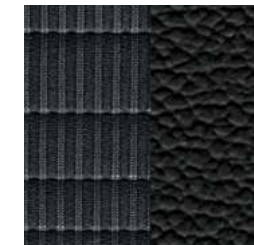
# Interior colours



Black woven cloth



Black knit cloth



Black cloth/leather



Black leather

\*Premium paint. Some seating, paint and trim configurations may be limited. Visit [kia.ca](http://kia.ca) for full details.

# Wheels



16" steel wheel covers



16" alloy wheels



17" alloy wheels



18" alloy wheels

# Genuine Kia Accessories

Built to fit right, work right and look great.



All-weather floor mats

Cargo tray

Window visors

Hood protector

Accessory wheels



Available accessories may vary. Images shown for illustration purposes only. Items and selection may change. See Dealer for details

## UVO | Intelligence™

It connects, checks, finds and reminds - from the convenience of your smartphone<sup>1,3,5</sup>

Free for the first three years. Available feature. See features page or visit [kia.ca](http://kia.ca) for full details.



## SiriusXM



With your new vehicle, enjoy access to SiriusXM® satellite radio from anywhere you go - while you're on the road, using the smartphone app, online, or even through your smart TV.

Free for the first 3 months. Available feature. See features page or visit [kia.ca](http://kia.ca) for full details.

# We've got you covered<sup>11</sup>

Kia engineers are passionate about producing vehicles that are exceptionally well-designed and reliable. Their dedication to quality and attention to detail give Kia the confidence to back every model with an outstanding warranty program.



**5-year/  
100,000 km**

Worry-free comprehensive warranty



**5-year/  
100,000 km**

Limited powertrain warranty



**5-year/  
unlimited km**

24-hour roadside assistance

The Kia 5-year/100,000-km warranty includes various warranties and roadside assistance. Some restrictions apply. For more information call us at 1-877-542-2886 or visit to [kia.ca](http://kia.ca).

## Endnotes

1. Available feature. See features page or visit [kia.ca](http://kia.ca) for full details. 2. None of the features we describe are intended to replace the driver's responsibility to exercise due care while driving and are not a substitute for safe driving practices. Some features may have technological limitations. For additional information regarding the various features, including their limitations and restrictions, please refer to your vehicle's Owner's Manual. 3. Compatible smartphone required. Data rates may apply, please check with your wireless service provider. For wireless charging, certain smartphones may require a wireless charging-compatible case. 4. When equipped with the navigation system, French voice commands may be limited. 5. UVO Intelligence only available on select models and trims. Specific functionality may vary between models and trims. Destination Search is only available on vehicles with a navigation head unit. Certain functions are only accessible on the smartphone app and/or customer web portal and/or in-vehicle head unit. Service is free for the first three years from the day the vehicle was first registered. Monthly subscription may be applicable after the free period. Please consult your dealer for details. 6. SiriusXM satellite radiow service includes 3 month trial and is available in the 10 provinces and three territories of Canada, and the 48 contiguous states of the U.S. Monthly subscription sold separately after three trial months. 7. The Bluetooth word mark and logos are registered trademarks owned by Bluetooth SIG, Inc. 8. Apple, the Apple logo, CarPlay, and iPhone are trademarks of Apple Inc., registered in the US and other countries. App Store is a service mark of Apple Inc. 9. Google, Google Play, Google Maps, and Android Auto are trademarks of Google Inc. 10. Harman Kardon is a registered trademark of Harman International Industries, Inc. All rights reserved. 11. The Kia 5-year/100,000-km warranty includes various warranties and roadside assistance. Some restrictions apply. For more information call us at 1-877-542-2886 or visit to [kia.ca](http://kia.ca).

We make every effort to ensure that the product information in this brochure is accurate at the time of printing. Occasional changes in production, that affect the standard or optional equipment included on a specific model, may occur after printing which will not be reflected in this brochure. Kia Canada Inc. reserves the right to make these changes without notice or obligation. For this reason, please rely on [kia.ca](http://kia.ca) or your local Kia dealer for the very latest product information. Some vehicles shown may include optional equipment or may not be exactly as shown. Kia Canada Inc., by the publication and dissemination of this material, does not create any warranties, either expressed or implied, to any Kia products. Reproduction of the contents of this material without the expressed written approval of Kia Canada Inc. is prohibited. © Copyright 2021 Kia Canada Inc. Printed in Canada, August 2021.



 [facebook.com/kiacanada](https://facebook.com/kiacanada)

 [twitter.com/kiacanada](https://twitter.com/kiacanada)

 [instagram.com/kiacanada](https://instagram.com/kiacanada)

 [youtube.com/kiacanada](https://youtube.com/kiacanada)



Movement that inspires