

2021

RIO

1.4L Petrol | 1.0L Turbo



The Power to Surprise

A NEW ERA FOR RIO

I'm driving Rio

The 2021 Rio Hatchback

Bigger, bolder and poised for adventure, the 2021 Rio redefines the hatchback. Getting from A to B has never been more stylish and innovative.



1.4L Petrol DOHC CVVT

The CVVT petrol engine combines efficiency and power to deliver optimum performance and increase fuel economy.

Max power: 74kW @ 6,000 rpm

Max torque: 133Nm @ 4,000 rpm



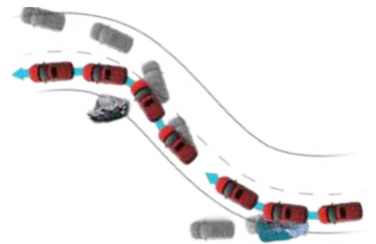
6 speed auto or manual

A 6 speed automatic transmission turns the power into a smooth, effortless drive. But if you love going through the gears, you'll love the quick, precise shifts of Rio's 6 speed manual transmission. Manual transmission available in LX only.



6 airbag system

To help protect occupants and potentially reduce injuries in the event of a collision, Rio offers driver and front passenger airbags, 2 front-side airbags and 2 side-curtain airbags.



Electronic Stability Control (ESC)

ESC ensures optimal braking performance and directional control by automatically delivering the right amount of braking force to each wheel according to engine torque and driving conditions.

AN UNCOMPROMISED APPROACH TO SAFETY



Autonomous Emergency Braking (AEB)

Using camera and radar data, the Rio senses the potential for a collision with a car, pedestrian or cyclist ahead and applies emergency braking to avoid or reduce the effects of a collision.



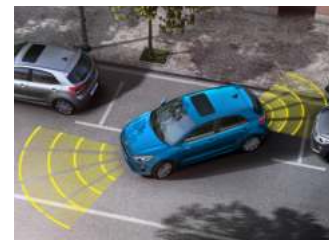
Lane Keep Assist System (LKAS)

This system helps to alert the driver when the vehicle deviates from the traffic lane and automatically assists in steering the vehicle to stay within the lane of travel.



Hill-Start Assist Control (HAC)

At a standstill on an incline, HAC prevents you from rolling backwards by gently applying the brakes for up to 2 seconds. From the time you lift your foot from the brake pedal, it gives you time to switch your foot smoothly to the accelerator.



Front & rear parking sensors

Squeeze into tight parking spots with the help of rear parking sensors. As you reverse, loud beeps alert you the closer you get to a car or object. In addition, front parking sensors are available in EX, LTD, GT Line and GT Line+.

INTELLIGENT INTERACTIVITY



Rearview camera

The rearview camera helps you keep an eye on what's behind you while reversing. Dynamic guidelines indicate the path you're heading on, and will react as you reverse.



Satellite navigation

Set the navigation system to help you get to your destination faster. It delivers live traffic information so you know which areas to avoid and suggests alternative routes. Available in EX, LTD and GT Line+.



Climate control

Enjoy 1-touch comfort by simply setting your preferred temperature, the automatic system will monitor and maintain the temperature until you change or cancel it. Available in EX, LTD, GT Line and GT Line+.



Supervision cluster with 4.2" LCD display

Customisable supervision cluster keeps you up to date with vehicle and trip data, fuel consumption and outside temperature.



8" colour touch screen audio system

A vivid 8" colour LCD touch screen is shared by the rearview camera and the audio system. The large screen makes it simple to select radio stations and operate other audio system controls with the touch of a finger.



Apple CarPlay™ & Android Auto™

Apple Carplay™ and Android Auto™ connect certain apps on your iPhone or Android smartphone to the Rio's infotainment system. It equips your vehicle's audio system with display and control functions when when your phone is plugged into the USB port.



Audio remote controls & Bluetooth® hands-free

Buttons mounted on the steering wheel let you adjust audio functions while your eyes stay on the road and your hands stay on the wheel. Built-in Bluetooth® connects paired, compatible mobile devices seamlessly, giving you easy access to music streaming and hands-free calls.



Smart Cruise Control

Radar sensors at the front of the vehicle monitor the distance between you and the vehicle ahead. To maintain a pre-determined safe distance, the system will automatically apply the brakes to reduce speed. Available in EX, LTD, GT Line and GT Line+.



Electrochromic rearview mirror

The electrochromic rearview mirror automatically controls the glare from the headlights of the vehicle behind you. Available in EX, LTD, GT Line and GT Line+.

A POSITION OF HEIGHTENED CONTROL



Start/Stop button + Smart Key

With the Smart Key in your bag or pocket, you can lock or unlock and even start your Rio at the touch of a button. Available in EX, LTD, GT Line and GT Line+.



Telescopic steering wheel

Make yourself more comfortable by adjusting the tilt of the steering wheel, then pull it closer or push it further away.



Auto defog system

The auto defog system detects any moisture on the windscreen and adjusts the heat and fan settings to clear it. Available in EX, LTD, GT Line and GT Line+.



Rain sensing wipers

When it begins to rain, rain sensing wipers turn on automatically and adjust the wipe speed depending on the amount of rain. Available on EX, LTD, GT Line and GT Line+.

LEAD THE WAY WITH GT LINE AND GT LINE+



1.0L Petrol Turbo GDI

The Rio GT Line and GT Line+ has a 1.0L Turbo GDI petrol engine that offers power and performance, and increases fuel economy, all the while maintaining low carbon emissions.

Max power: 74kW @ 4,500 rpm
Max torque: 172Nm @ 1,500 rpm - 4,000 rpm

7 speed DCT transmission

Both the Rio GT Line and GT Line+ feature a highly responsive 7 speed Dual Clutch Automatic Transmission (DCT) that delivers dynamic acceleration and a smoother transition.

Idle Stop & Go (ISG)

When the Rio GT Line and GT Line+ is stopped in traffic, the ISG system will shut off the engine, then restart it immediately when you take your foot off the brake, helping reduce emissions and fuel consumption. Operating conditions apply.

D-shaped steering wheel

The sporty D-cut design steering wheel with GT Line detailing further enhances the interior style to give the GT Line and GT Line+ a more sporty look.



Quad LED fog lights

The 'ice-cube' LED fog lights complement the Rio GT Line and GT Line+'s sporty exterior while providing a clear view of the road ahead when the weather gets misty or a little foggy.



Front and rear sports bumper

A black gloss front and rear sports bumper design give the GT Line and GT Line+ another point of difference.



Dual exhaust

2 exhaust pipes add another level of sporty impact to the GT Line and GT Line+.



Integrated rear spoiler

Continue the sporty look with a gloss black rear spoiler which also holds the high stop brake light on the GT Line and GT Line+.

BODY COLOURS & WHEELS



Clear White



Aurora Black Pearl



Sporty Blue



Perennial Grey



Signal Red



Mighty Yellow
(GT Line and GT Line+)



15" Alloy
(LX)



16" Alloy
(EX)



17" Alloy
(LTD)



17" Alloy
(GT Line and GT Line+)

SPECIFICATIONS

TECHNICAL	LX MT / AT	EX	LIMITED	GT-LINE	GT-LINE+
Engine type	1.4L DOHC MPI D-CVVT Petrol Engine			1.0L Turbo GDI Petrol	
Displacement	1,368 cc			998 cc	
Compression ratio	10.5 : 1			10.0 : 1	
Maximum power	74 kW @ 6,000 rpm			74 kW @ 4,500 rpm	
Maximum torque	133 Nm @ 4,000 rpm			172 Nm @ 1,500 ~ 4,000 rpm	
Fuel consumption - combined*	5.6L / 100 km (LX MT) 6.0L / 100 km (LX AT)	6.0L / 100 km		5.7L / 100 km	
CO ₂ emission - combined	129g / km (LX MT) 143g / km (LX AT)	143g / km		132g / km	
TRANSMISSION					
Gearbox	6 speed Manual (LX MT) 6 speed Automatic (LX AT)	6 speed Automatic		7 speed Dual Clutch Transmission	
Drivetrain	Front Wheel Drive				
Idle Stop & Go	-	-	-	●	●
SUSPENSION					
Front suspension	McPherson Strut				
Rear suspension	Coupled Torsion Beam Axle (CTBA)				
WHEELS & TYRES					
Tyres / Wheels	185 / 65 R15	195 / 55 R16	205 / 45 R17		
Wheels size / Type	15" Alloy	16" Alloy	17" Alloy		
Spare wheel type	Temporary Steel				
Front Brakes	256 mm Ventilated Discs	280 mm Ventilated Discs			
Rear Brakes	262 mm Solid Discs				
STEERING					
Steering system	Motor Driven Power Steering (MDPS)				
Minimum turning radius	5.1 m				
Steering wheel adjustment	Tilt & telescopic				
SAFETY FEATURES					
Safety Rating	5 STAR ANCAP (2017 Standard)				
Forward Collision Avoidance Assist (FCA) Car / Pedestrian / Cyclist	●	●	●	●	●
Lane Keep Assist System (LKAS)	●	●	●	●	●
Driver Attention Alert	●	●	●	●	●
Lane Follow Assist (LFA)	●	●	●	●	●
Blind Spot Collision Avoidance Assist (BCA) - Rear	-	●	●	-	●
Rear Cross Traffic Collision Avoidance Assist (RCCA)	-	●	●	-	●
ABS Brakes with EBD & BA	●	●	●	●	●
Hill-Start Assist Control (HAC)	●	●	●	●	●
Electronic Stability Control (ESC)	●	●	●	●	●
Vehicle Stability Management (VSM)	●	●	●	●	●
Dual Front and Side Airbags	●	●	●	●	●
Dual Side Curtain Airbags	●	●	●	●	●
Front Seatbelt Pretensioners / Load Limiters	●	●	●	●	●
3 Point ELR Seatbelts (All Seats)	●	●	●	●	●
Seatbelt Reminders for all Seats	●	●	●	●	●
Child Seat Anchor Point - Rear Seat	2x ISOFIX / 3x top tether				
Manual Child Safety Door Locks	●	●	●	●	●
Impact Sensing Door Unlock	●	●	●	●	●
Remote Keyless Entry	●	●	●	●	●
Engine Immobiliser	●	●	●	●	●
Rear Parking Sensors	●	●	●	●	●
Front Parking Sensors	-	●	●	●	●
Rear View Monitor with Dynamic Guidelines	●	●	●	●	●
EXTERIOR FEATURES					
Halogen Bi-Function Projection Headlamps with Cornering Headlight Control	●	●	-	●	-
LED Bi-Function Projection Headlamps with Cornering Headlight Control	-	-	●	-	●
LED Daytime Running Lights	●	●	●	●	●
Halogen Front Fog Lights	-	●	●	-	-
Quad LED Front Fog Lights	-	-	-	●	●
Electrically Adjustable Side Mirrors	●	●	●	●	●
Heated and Folding Side Mirrors	-	●	●	●	●
Halogen Rear Combination Lamps	●	●	-	●	-
LED Rear Combination Lamps	-	-	●	-	●
High-Mounted Brake Light - Bulb	●	●	●	●	●
Black & Silver Paint Radiator Grille	●	-	-	-	-
Black & Chrome Radiator Grille	-	●	●	-	-
Aeroblade Wipers	●	●	●	●	●
LED Side Mirror Indicators	-	●	●	●	●
Privacy Glass	-	●	●	●	●

	LX MT / AT	EX	LIMITED	GT-LINE	GT-LINE+
GT LINE AND GT LINE+ EXTERIOR PACKAGE					
Glossy Black & Dark Chrome Coating Radiator Grille	-	-	-	●	●
Body Coloured Bumpers with Black Accent	-	-	-	●	●
Gloss Black Exterior Mirror Cover & Rear Spoiler	-	-	-	●	●
Chrome Beltline	-	-	-	●	●
Dual Muffler	-	-	-	●	●
INTERIOR FEATURES					
Seating Configuration	5 seats				
Interior Trim	Cloth		Synthetic Leather	Cloth & Synthetic Leather	
Steering Wheel Material	Composite Leather			D-Shaped Perforated Leather	
Gear Shift Knob Material	Composite Leather				
Aluminium Sports Pedals	-	-	●	●	●
Composite Leather Wrapped Crash Pad Garnish	-	-	●	-	-
Inside Door Handle	Silver Metal Paint		Satin Chrome		
Adjustable Driver's Seat	Manual with Height Adjustment				
Height Adjustable Headrests with Driver & Passenger Up/Down & Sliding	●	●	●	●	●
60:40 Split Folding Rear Seat	●	●	●	●	●
Front Passenger's Side Seat Back Pocket	●	●	●	●	●
Front Overhead Console Lamp with Sunglass Case	●	●	●	●	●
Centre Console Storage Box	●	●	●	●	●
COMFORT AND CONVENIENCE					
Infotainment & Stereo System	8" Touchscreen with Radio, MP3 and 6 Speakers				
Satellite Navigation	-	●	●	-	●
Apple CarPlay™∞	●	●	●	●	●
Android Auto™†	●	●	●	●	●
AUX/USB Input	●	●	●	●	●
Bluetooth® Connectivity with Voice Recognition**	●	●	●	●	●
4.2" TFT LCD Colour Supervision Instrument Cluster	●	●	●	●	●
Multifunction Trip Computer	●	●	●	●	●
2x USB Ports - Front Console & Outside Rear Centre Console	●	●	●	●	●
1x 12V Power Outlet - Front console	●	●	●	●	●
Cruise Control	●	-	-	-	-
Smart Cruise Control	-	●	●	●	●
Steering Wheel Mounted Controls	Audio and Cruise Control				
Drive Mode Select	-	-	-	●	●
Air Conditioning	Manual	Climate Control with Auto Defogger			
Auto Window Defogger	-	●	●	●	●
Rear Seat Heating Duct	●	●	●	●	●
Electrochromic Rear View Mirror (ECM)	-	●	●	●	●
Power Windows - Front & Rear	With Driver's Side Auto Up/Down & Safety				
Remote Central Locking	●	●	●	●	●
Auto Light Control	●	●	●	●	●
Rain Sensing Front Wipers	-	●	●	●	●
Smart Key with Engine Start/Stop Button	-	●	●	●	●
Sunvisors with Illuminated Vanity Mirrors	●	●	●	●	●
Rear Parcel Shelf	●	●	●	●	●
Hood Insulator	●	●	●	●	●
DIMENSIONS					
Overall Length	4,065 mm		4,070 mm		
Overall Width	1,725 mm		1,725 mm		
Overall Height	1,450 mm		1,450 mm		
Wheelbase	2,580 mm		2,580 mm		
Minimum ground clearance	140 mm		140 mm		
WEIGHT AND CAPACITY					
Kerb Weight Minimum / Maximum	1,130 kg / 1,218 kg (LX MT) 1,158 kg / 1,246 kg (LX AT)	1,158 kg / 1,246 kg		1,195 kg / 1,283 kg	
Cargo Capacity - Rear Seats Up / Down	325 / 980 Litres (VDA)				
Towing Capacity - Braked / Unbraked	1,000 kg / 450 kg (LX MT) 800 kg / 450 kg (LX AT)	800 kg / 450 kg		1,110 kg / 450 kg	
Fuel Tank Capacity	45 Litres				

Specifications, equipment and colours shown in this brochure are subject to change without notice or obligation.

* Fuel consumption figures shown are from standard Australia Design Rules tests and are stated for the purpose of comparison.

Actual results achieved will differ according to operating conditions and driving style.

** Not all handsets may be compatible.

∞ Apple CarPlay: Requires an iPhone 5 or later. It is recommended to always update your iPhone to the latest iOS release. Use the Apple Lightning® cable provided with your phone, or an Apple certified Lightning cable. Kia Motors cannot guarantee continued compatibility.

† Android Auto: Requires an Android phone with Android 5.0 Lollipop or higher. It is recommended to always update your phone to the latest OS release. Use the USB cable provided with your phone. Kia Motors cannot guarantee continued compatibility.

ECO-CONSCIOUS

So you value sustainable living? We do too.

That's why we take pride in rising to meet the expectations and challenges of the 21st century while making tangible contributions to the preservation of the environment and sustainable development of society.

Our environmental research centre spearheads our drive for the production of clean hybrid and fuel-cell vehicles to lead the way to eco-friendly cars for a greener tomorrow for you, your children and all of us.

From design through to recycling, we create innovative products, adhering to state-of-the-art Design for Recycling (DfR) guidelines. Even at the end of your car's life, we aim for eco-friendly return and treatment.

Operating a rigid process, we guarantee environmental protection in the treatment of harmful waste substances. These are then recycled or recovered, ensuring the highest level of environmental protection.

As you can see, what you do on a small scale with your household refuse, we at Kia Motors do on a large scale.

SERVICES



5 YEAR Warranty Programme (OR UP TO 100,000KMS)

All new Kia Passenger Vehicles come with an impressive 5-Year/100,000 km (whichever comes first) Warranty Programme covering against manufacturing or assembly defects. This warranty programme is transferable between owners and emphasises our commitment to our customers.



5 YEAR Roadside Assist

A Roadside Assistance Programme for the duration of the Warranty Period is also offered on every new Kia at no cost. In the unlikely event that your Kia has broken down, help is only a call away and trained staff will be despatched to your location. If a repair cannot be conducted on the spot, the vehicle will be towed free of charge to the nearest Kia dealer.



INCIDENT CARE

If you and your new Kia were unfortunately involved in an incident or crash that requires body repairs to your Kia, Kia Incident Care is here to help you, and is free for the first five years.

Visit Kia.co.nz for full details and terms & conditions.

RIO

Kia.co.nz



The Power to Surprise