



RANGE ROVER SPORT  
**600 - L E L U X U R Y E D I T I O N**





C O N T E N T S

07 600-LE LUXURY EDITION •

14 EXTERIOR COMPONENTS •

24 INTERIOR COMPONENTS •

10 EXTERIOR STYLING

21 INTERIOR STYLING

29 LIGHT ALLOY WHEELS



R A N G E   R O V E R  
6 0 0   -   L E  
L U X U R Y   E D I T I O N

Project Kahn is the original British automotive fashion house - designing and styling bespoke Range Rover vehicles.

Our in-house creative team of product designers, 3D modellers, graphic artists and material engineers spend thousands of hours developing and refining each of our products until they meet our exacting standards of craftsmanship.

We redefine the spirit and aesthetic of each vehicle, always placing sophistication before ostentation, and originality before convention.

With each project we undertake, we aim to create a modern classic, a collectable piece which will maintain its value over time. We're committed to investing in British industry and innovation, and each of our bespoke vehicles is designed, tested and converted in the U.K., giving us the ability to directly oversee each step in the production process - and guarantee the quality.

Choosing to work with Project Kahn is the first step towards realising your dream vehicle, and the start of a collaborative process of design and discussion which we've found is often every bit as satisfying as its result.

Finest quality, to the last detail.

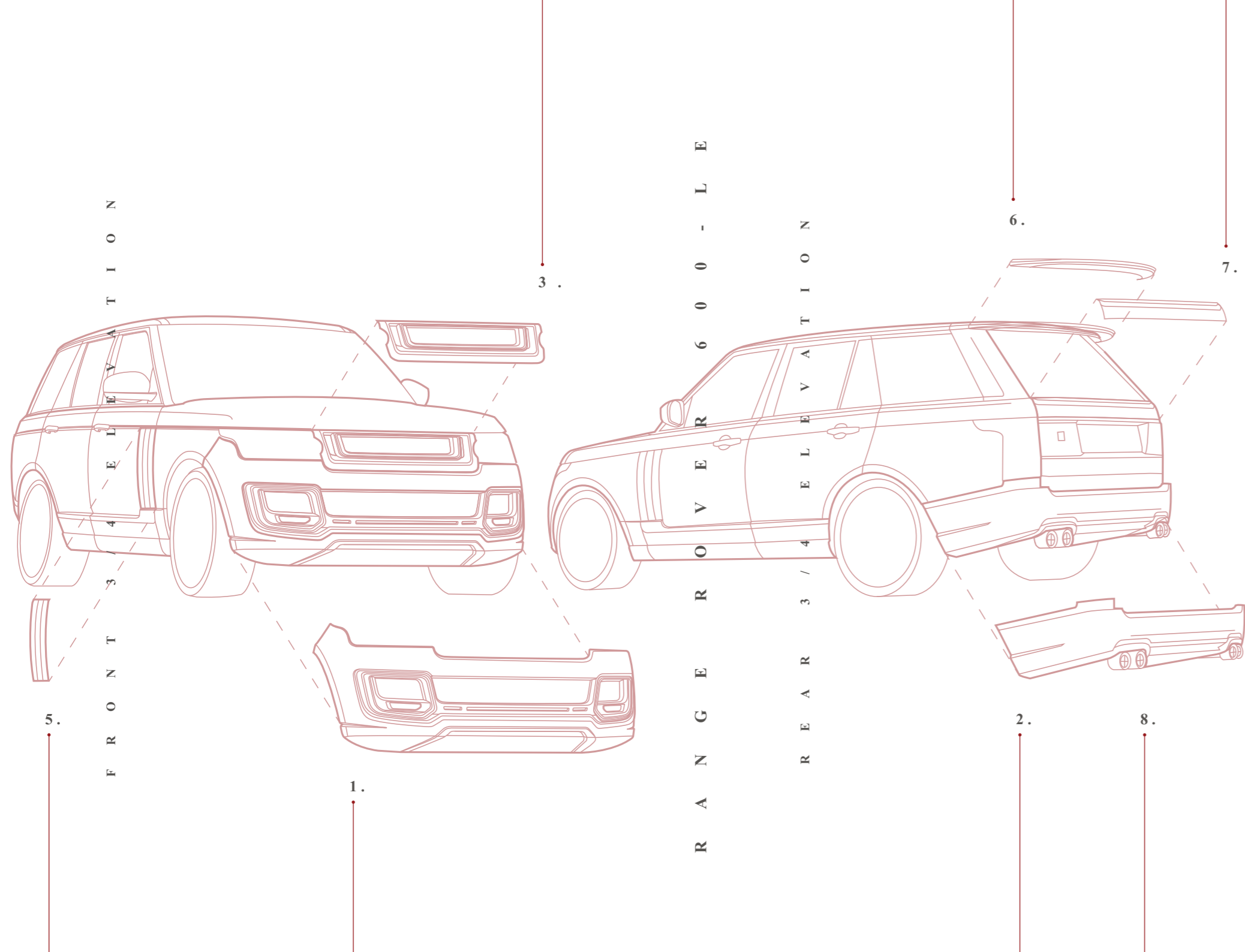




R A N G E R O V E R  
6 0 0 - L E  
E X T E R I O R S T Y L I N G

For the last 25 years Afzal Kahn has been at the forefront of vehicle styling fashion - setting the trends where others follow. The Project Kahn brand was founded in 2005 to specialise in Range Rover and Land Rover conversions. Since then we have been styling and customising these iconic vehicles for an exclusive and select clientele.

Our aerodynamic styling kits are the result of a meticulous design process, using 3D modelling to provide the best fit components which fix seamlessly onto the original vehicle. All our components are manufactured from the highest quality lightweight carbon composite and carbon fibre.



RANGE ROVER 600-LE  
AERODYNAMIC STYLING



**1. 600-LE - Front Bumper Replacement**  
*In Carbon Composite*

**2. 600-LE - Rear Bumper Replacement including Exhaust Diffuser**  
*In Carbon composite, Rear Bumper Replacement requires 600-LE Exhaust System, Available at an Extra Cost F*

**Front Bumper Centre and Exhaust Diffuser available in Exposed Carbon.**

*Full Colour Change is available through the Kahn Bespoke Fitting centre, offering a wide variety of unique colour options, giving you the opportunity to personalise and enhance the look of your vehicle.*

ALSO AVAILABLE FOR RANGE ROVER 600-LE:

**Privacy Tinted Glass, Anti Reflection Glass**

**Privacy Tinted Glass, Anti Smash and Grab Glass**

*Designed to protect your car window from shattering, preventing easy access to your vehicle. A choice of shades are available, Light Tint (front and rear), Light Tint (front) & Smoked (rear), Light Tint (front) & Limo Tint (rear).*

## EXTERIOR COMPONENTS

### 3. Black Label Front Grille with 3D Mesh

*Designed for the new Range Rover*

### 4. RS Front Grille with 3D Mesh

*Designed for the new Range Rover*

### 5. Side Vents in Carbon Fibre

### 6. Upper Roof Wing Spoiler

### 7. Lower Bootlid Spoiler

### 8. Stainless Steel Crosshair Quad Rear Pipes & Finishers

*Available for Diesel & Petrol Models*

ALSO AVAILABLE FOR RANGE ROVER 600-LE:

#### Undercar KAHN Logo Projection Floor Light

*Projects the Kahn logo as a floor light when entering and leaving your vehicle*

#### Brake Calipers Painted in Special Heat Resistant Paint

*Painting Only / Available in a Choice of Colours*

#### Welcome Ambient Illumination Package - Under Car Ice White LED Illumination

*Under car illumination on both sides of the vehicle. Works with your interior light system and switches on and off when leaving or entering your vehicle.*

#### Range Rover Electronic Lowering Module

*For vehicles that have OE-air or ABC-suspension. The Kahn Lowering Module lowers the vehicle by approximately 40mm, which changes the center of gravity and optimises the driving dynamics and the driving safety. A sporty performance and appearance is given without mechanical work. The lowering module consists of an electronic hardware module including plug connectors, a TÜV approval and a detailed mounting instruction.*

PAINTING & FINISHING SERVICES AVAILABLE FOR RANGE ROVER 600-LE:

#### Painted Floating Roof

*Painting Only / Available in a Choice of Colours*

#### Painted Roof Stripe & Bonnet Stripe

*Painting Only / Roof Stripe Available for Vehicles without a Panoramic Sunroof / Available in a Choice of Colours*

#### Tinted Rear Lamps & Side Repeaters

*Painting Only / Light Smoke*

3 .



6 .



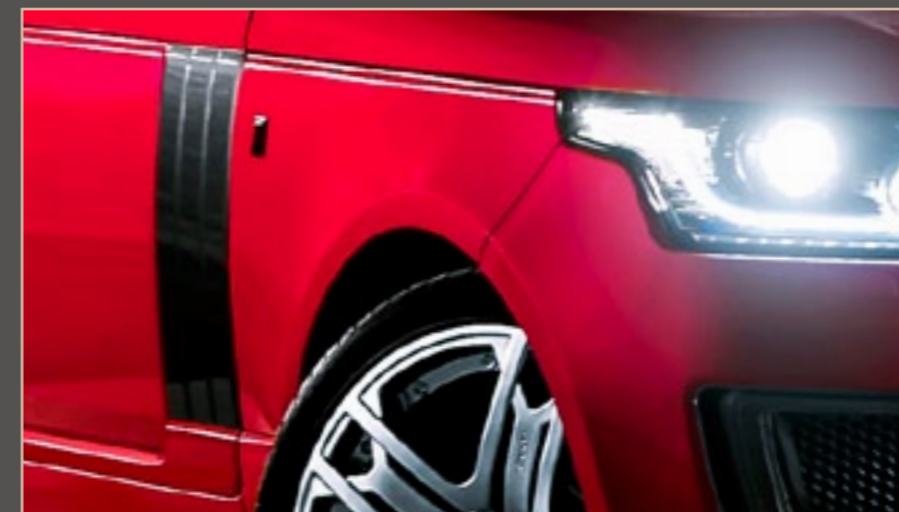
4 .



7 .



5 .



8 .





F I N E S T   Q U A L I T Y   T O  
T H E   L A S T   D E T A I L







R A N G E R O V E R  
6 0 0 - L E  
I N T E R I O R S T Y L I N G

Project Kahn is famed for its luxurious bespoke leather interiors. We use only the finest quality materials - ensuring that our interior design work adds value and style to each vehicle. The clients we work with demand the ultimate in style, performance and comfort from their vehicles, and it's our mission not only to fulfil those demands, but to constantly strive to go further, to push the boundaries of automotive fashion, to create timeless modern classics.

Our creative team tailor the design of each of our leather interior packages to complement the style and spirit of each vehicle, creating a perfect match between the interior and exterior aesthetics. With a wide choice of leathers, fabrics, colours and stitching, the options for personalising your vehicle are almost endless. For an even more personal touch, we provide a fabric matching service where we'll trim your vehicle to match any fabric sample you provide.

Each interior we design is upholstered by our expert team at our UK trim shop, to the exacting standards of British craftsmanship associated with the Kahn brand. Keeping this service in house allows us to guarantee our customers an unrivalled level of quality.



LEATHER INTERIOR  
3D MODULAR DESIGN

Our new hand-stitched leather interior package for the Range Rover includes both front and rear seats in quilted and perforated leather in choice of colours.

## INTERIOR COMPONENTS

**1. Steering Wheel Centre Hub Re-upholstered in Leather**

*Leather Available in a Choice of Colours*

**Steering Wheel Re-upholstered in Alcantara**

*Alcantara Available in a Choice of Colours*

**2. Instrument Binnacle Re-upholstered in Leather**

*Leather Available in a Choice of Colours*

**4. Four Door Armrests Re-upholstered in Leather**

*Leather Available in a Choice of Colours*

**5. Front & Rear Door Tops Re-upholstered in Leather**

*Leather Available in a Choice of Colours*

**6. Centre Glove Box Re-upholstered in Leather or Alcantara**

*Leather, Alcantara & Contrast Stitching Available in a Choice of Colours*

**7. Dashboard Re-upholstered in Leather or Alcantara**

*Leather & Contrast Stitching Available in a Choice of Colours*

ALSO AVAILABLE FOR RANGE ROVER 600-LE:

**Transmission Tunnel Trim in Leather or Alcantara**

*Leather, Alcantara & Contrast Stitching Available in a Choice of Colours*



## INTERIOR COMPONENTS

7. **Roof Lining Re-upholstered in Quilted Leather or Alcantara**

*Leather, Alcantara & Contrast Stitching Available in a Choice of Colours*

8. **Diamond Gear Selector**

9. **Vented Foot Pedals in Machined Aluminium**

10. **Kahn Rear Seat Entertainment Package**

*2x LCD Screens, Multi Region DVD Player & Infrared Control, 2x Infrared Headphones*

11. **Floor Mats in High Quality Heavy Duty Carpet - Set of 4**

*Available in Black Charcoal and in LHD & RHD Configuration*

12. **Door Entry Sill Plates in Stainless Steel**

7 .



10 .



8 .



11 .



9 .



12 .





R A N G E R O V E R  
6 0 0 - L E  
L I G H T A L L O Y W H E E L S

The Project Kahn alloy wheel collection features a specially selected range of our most popular models, specifically designed to complement the unique lines and styling of the Range Rover.

We've been designing and manufacturing wheels for over two decades, and over that time our output has centred around simple yet powerful designs which integrate with the aesthetic of the vehicle to which they're fitted, adding style and elegance without looking ostentatious.

Our collection includes well established modern classics alongside innovative new designs, available in a wide range of finishes, sizes and fitments.

We're happy to consult with our clients on which wheel, size and finish is best suited to their particular vehicle, depending on the particular look they wish to achieve. Each wheel we create carries the Kahn stamp - a guarantee of quality, and an assurance that you own a genuine and original design.

# SANT'AGATA FORGED LIGHTWEIGHT

Inspired by the classic Lamborghini "telephone dial" wheel, and originally designed for the Aventador, this version of the Sant'Agata wheel has been reimagined to suit the rugged appearance of the Range Rover Sport. The negative space within the spokes recalls the circular cutouts of the original Lamborghini wheel, whilst the negative space outlines the Kahn trademark flared shape.

**Sant'Agata available in the following sizes and finishes:**



9½" x 23"  
Shadow Chrome

*All wheels are designed to take original equipment centre caps.*





# 600-LE SUPERLIGHT

With a low sculptural mass juxtaposed with a high graphical mass, the 600-LE wheel recalls the design language used in the detailing of the Kahn 600LE Range Rover, imparting the same sense of rugged strength. The extensive negative space gives the impression of both linear and flared spoke elements - a Kahn trademark - while the depth of the spokes increases the perceived size of the wheel.

600-LE available in the following sizes and finishes:



All wheels are designed to take original equipment centre caps.



# RS - 600

Designed to give an appearance of tension, the twin layer design of the RS-600 spokes give the illusion of a two piece wheel. The alignment of the layers underlines the strength of the wheel while the resulting large spacing gives a low visual mass.

**RS-600 available in the following sizes and finishes:**



20"		22"				23"		
8½" x 20"	8½" x 20"	9½" x 22" Front 11" x 22" Rear	9½" x 22" Front 11" x 22" Rear	9½" x 22" Front 11" x 22" Rear	9½" x 22"	9½" x 23"	9½" x 23"	9½" x 23"
Silver Platinum	Shadow Chrome	Silver Platinum	Matt Pearl Grey	Matt Gun Metal	Matt Black	Silver Platinum	Shadow Chrome	Satin Black

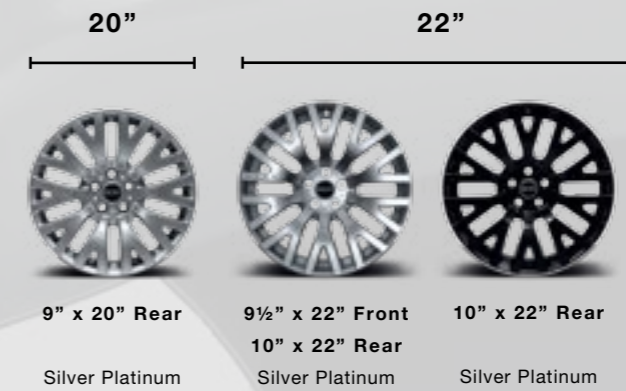
*All wheels are designed to take original equipment centre caps.*



# RS

An evolution of the RS-X wheel with increased solidity to suit the Land Rover and Range Rover vehicles for which it was designed. The negative sweep to the centre increases the visual mass of the wheel, and the spokes appear to continue to the very edge of the rim, maximising the visible size.

**RS available in the following sizes and finishes:**



*All wheels are designed to take original equipment centre caps.*

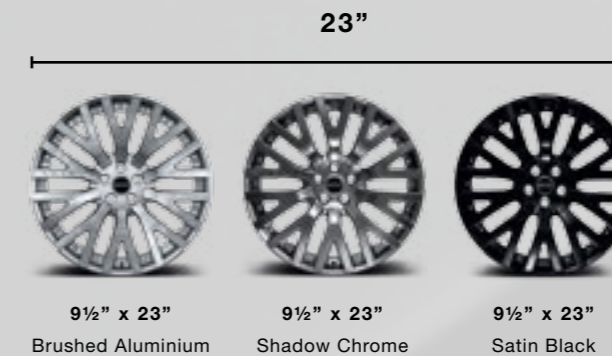




## RS - 2

The RS-2 is a variation on the RS. Both wheels are originally inspired by the RS-X wheel and designed with higher visual mass to complement large 4x4 vehicles. This model adds studs to the inside edge of the wheel, rather than the clean finish of the RS, conveying a sense of rugged luxury.

**RS-2 available in the following sizes and finishes:**



*All wheels are designed to take original equipment centre caps.*





## R S - X F

An evolution of the original RS-X, the RS-XF wheel eschews straight lines in favour of more organic curved spokes, while maintaining the flared spacing for which Kahn wheels have become known. Greater surface development gives a softer feel to the wheel, but the high visual mass reinforces the appearance of strength and quality

**RS-XF available in the following sizes and finishes:**



8.5" x 20"  
Shadow Chrome

*All wheels are designed to take original equipment centre caps.*





**Kahn Laboratories**

240 Canal Road, Bradford, England, BD1 4SX. +44 (0) 1274 749 999

**A. Kahn Design Boutique**

385 Kings Road, London, England, SW10 0LR. +44 (0) 207 751 4555

**Kahn Automobiles**

Kirkstall Road, Leeds City Centre, England, LS3 1LX. +44 (0) 113 834 5055

[www.projectkahn.com](http://www.projectkahn.com)

