

2021 Hyundai

# IONIQ





# Reduce your carbon footprint. Not your comfort level.



IONIQ Plug-in Hybrid Limited in Amazon Gray

Just a few years ago, 'going green' required you to limit your choices to small cars that lacked comfort and style. Then, Hyundai changed the rules with Ioniq – a trio of truly compelling alternative fuel vehicles that are every bit as stylish as they are roomy and flush with technology.

With hybrid, plug-in hybrid and fully electric powertrains, Ioniq lets you choose the efficiency you want – and the engaging performance you need – for a remarkably fun driving experience. After all, what's more fun than driving past all those gas stations?

Ioniq's aerodynamic silhouette and sleek front grille, together with the availability of jewel-like LED headlights and taillights, break through the bland with a bold sense of style. Step inside, and the upscale treatment is even more evident. Check out the dash and center console design, which includes a digital instrument cluster display and ultra-modern touch-type climate controls. Every Ioniq is also available with Hyundai Blue Link,<sup>®</sup> our award-winning connected car technology that seamlessly syncs your digital life with your car.<sup>1</sup> Is it any wonder Hyundai has been the automotive brand ranked #1 in customer loyalty for 11 years in a row?<sup>2</sup>

<sup>1</sup>The 2021 Hyundai Ioniq includes 3 years of the Blue Link Connected Care, Remote and Guidance (factory-equipped navigation required) packages. All trials require an active Blue Link subscription agreement subject to the Connected Services Terms and Conditions. Three-year term starts from the new vehicle date-of-first-use, is available for new vehicle purchases and leases, and is transferable to subsequent owners subject to the Terms and Conditions. Only use Blue Link and corresponding devices when safe to do so. Cellular and GPS coverage is required. Features, specifications and fees are subject to change. For more on details and limitations, visit [HyundaiUSA.com](http://HyundaiUSA.com) or your authorized Hyundai dealer. <sup>2</sup>Based on 2010, 2011, 2012, 2013, 2014, 2015, 2016, 2017, 2018, 2019 and 2020 Brand Keys Customer Loyalty Engagement Index\*. <sup>3</sup>Wireless connection not available on models equipped with 10.25" navigation display.



### High Tech

New for 2021, wireless Apple CarPlay<sup>®</sup> and Android Auto<sup>™</sup> connections<sup>3</sup> help you make the most of Ioniq's standard 8" high-resolution touchscreen audio display. An available 10.25" high-resolution navigation display delivers real-time traffic flow and incident data without requiring a subscription fee.

### High Touch

Feel that soft touch when you run your hand across Ioniq's armrest? It's the result of an innovative process Hyundai pioneered to create luxurious interior surfaces from bio-materials like recycled plastics, powdered wood, volcanic stone and sugarcane fibers.



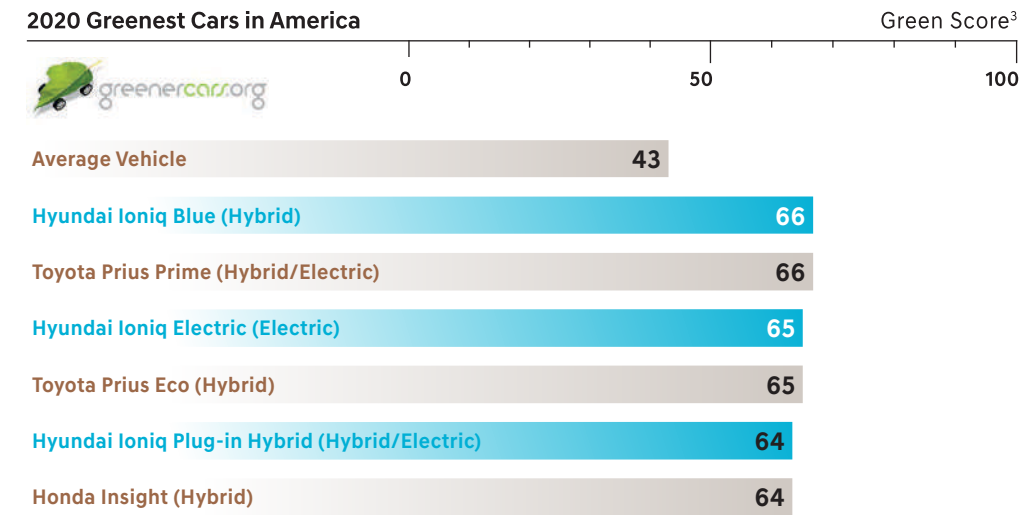
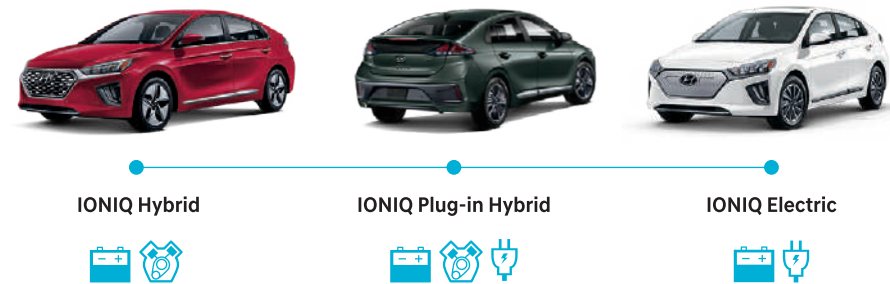
# Our Blue is green.

Ioniq is the world's first vehicle to offer the choice of three electrified powertrains – Hybrid, Plug-in Hybrid and Electric. Hyundai Blue Drive® technology radically reduces pollution and improves mileage, all while delivering exceptional driving performance.

With 59 combined MPG, the Ioniq Hybrid Blue is rated by *Kelley Blue Book* as the most fuel-efficient hybrid in America – even eclipsing the Toyota Prius! The title of “Greenest Car” sold in the USA for 2020 also belongs to Ioniq Blue, tied with Toyota Prius Prime.<sup>2</sup> In fact, three of the six Greenest Cars sold in America for 2020 were Hyundai Ioniq models according to The American Council for an Energy Efficient Economy.

Ioniq Electric's motor is truly electrifying: 134 HP and 218 lb-ft of torque deliver near-instantaneous thrust. Recharging its 100 kW battery is quick, too. Using a 7.2 kW charger in DC Fast Charge mode, it can recharge up to 80 percent (for a driving range of about 136 miles) in less than an hour. Ioniq Electric's 133 combined MPGe gives it one of the highest vehicle efficiency ratings in the U.S., while Ioniq Plug-in Hybrid combines the benefits of the electric and hybrid powertrains to deliver an estimated 620-mile total driving range.

Control paddles on Ioniq's steering wheel allow you to adjust the amount of energy captured during regenerative braking. You can increase it for maximum regeneration to help extend your driving range, or decrease the regenerative braking level to create a smoother, more natural feel during deceleration and downhill coasting. Every Ioniq also includes Drive Mode Select. Put it in Sport mode, and Ioniq adjusts the response of its engine, steering and shifting for a more dynamic level of performance. So there's no stopping you now.



*Greencars.org is part of the American Council for an Energy-Efficient Economy*



Regenerative brake level control paddles



Plug-in Hybrid charging port



7" LCD instrument cluster (Sport/Normal modes)



Ioniq Electric push-button drive selector



<sup>1</sup> For more information, visit Kelley Blue Book's KBB.com. Kelley Blue Book is a registered trademark of Kelley Blue Book Co., Inc. <sup>2</sup> Ref: <https://greencars.org/greener-meanest/greenerst>. <sup>3</sup> Green Score derived from combination of test results for fuel economy and emissions reported to the U.S. EPA and California Air Resources Board, pollution from vehicle manufacturing/production/fuel distribution/vehicle tailpipes, air pollution (fine particles, nitrogen oxides, hydrocarbons and other pollutants) and greenhouse gases (such as carbon dioxide).





<sup>1</sup>Standard on Ioniq Plug-in Hybrid and Ioniq Electric, available on Ioniq Hybrid. <sup>2</sup>Apple CarPlay works with iPhone 5s, iPhone 5c, iPhone 5 and later models running the latest version of iOS 7 and above. Apple is a registered trademark of Apple Inc. Android Auto works with smartphones running on Android 5.0 Lollipop and higher. Android, Android Auto, Google Play and other marks are trademarks of Google Inc. <sup>3</sup>Claim based on comparison of specifications on manufacturer websites. <sup>4</sup>Qi wireless charging function is based on smartphone compatibility and/or specific accessory cases.

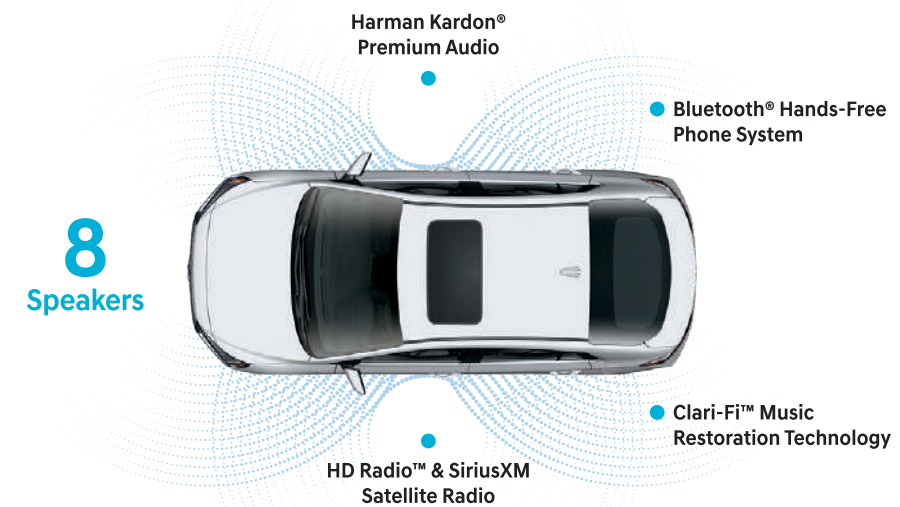
IONIQ Plug-in Hybrid Limited in Black Leather

## Be the host with the most.

Drive an Ioniq, and you can show your family and friends a great time. It starts with heated front seats<sup>1</sup> and automatic temperature controls. Apple CarPlay<sup>2</sup> and Android Auto<sup>2</sup> come standard<sup>2</sup> – the only question is whose songs get played? Whichever playlist it is, stay tuned: An 8-speaker Harman Kardon<sup>®</sup> premium audio system is available, complete with Clari-Fi<sup>™</sup> Music Restoration Technology that returns compressed audio files to their true, full sound.

One thing Ioniq does not ask you to compromise is space – we gave it more overall interior room than Toyota Prius, Chevrolet Bolt and Nissan LEAF.<sup>3</sup> After all, we imagine Ioniq's modern design and innovative features are things you'll want to share. Want to be even more popular? Consider available features like a power sunroof, wireless charging pad<sup>4</sup> and rear seat air vents.

To help you drive and arrive safely, an 8" high-resolution touchscreen displays images from Ioniq's rearview camera. And an available 10.25" navigation display delivers real-time traffic data without requiring a subscription fee.



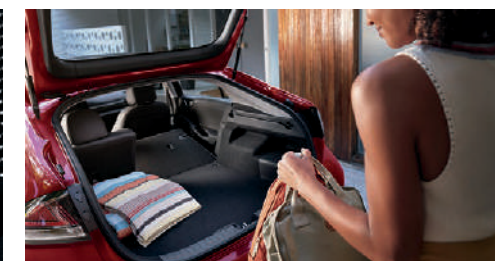
Power folding mirrors w/ LED turn signal indicators



10.25" navigation display



Power driver seat Integrated Memory System



60/40 split fold-down rear seats



# Hyundai SmartSense: Like having a sixth sense.

Ioniq is all about finding smarter ways to get around. Enter Hyundai SmartSense, our comprehensive suite of advanced safety technologies.<sup>1</sup> It's like having a sixth sense for steering clear of trouble. Ioniq offers you the peace-of-mind that comes from surrounding yourself and your loved ones with innovative safety and driver-assist features that have become Hyundai hallmarks.

On every 2021 Ioniq model, the list of standard features includes Forward Collision-Avoidance Assist,<sup>2</sup> Lane Keeping Assist,<sup>3</sup> Driver Attention Warning<sup>4</sup> and High Beam Assist. Other advanced SmartSense safety technologies are available to help protect you from

all angles – front, side and rear. To assist with negotiating the traffic ahead, there's Smart Cruise Control with Stop & Go<sup>5</sup> and Lane Following Assist.<sup>6</sup> Blind-Spot Collision Warning helps protect your flanks,<sup>7</sup> while Rear Cross-Traffic Collision Warning helps you safely back out of parking spots and driveways.<sup>8</sup>

When using Smart Cruise Control or Lane Following Assist, a technology called Highway Driving Assist automatically helps keep you centered in your lane and traveling at a safe distance from the vehicle ahead.<sup>9</sup> Which, when you stop and think about it, might actually be a seventh sense.



Forward Collision-Avoidance Assist with Pedestrian Detection



Rear Cross-Traffic Collision Warning

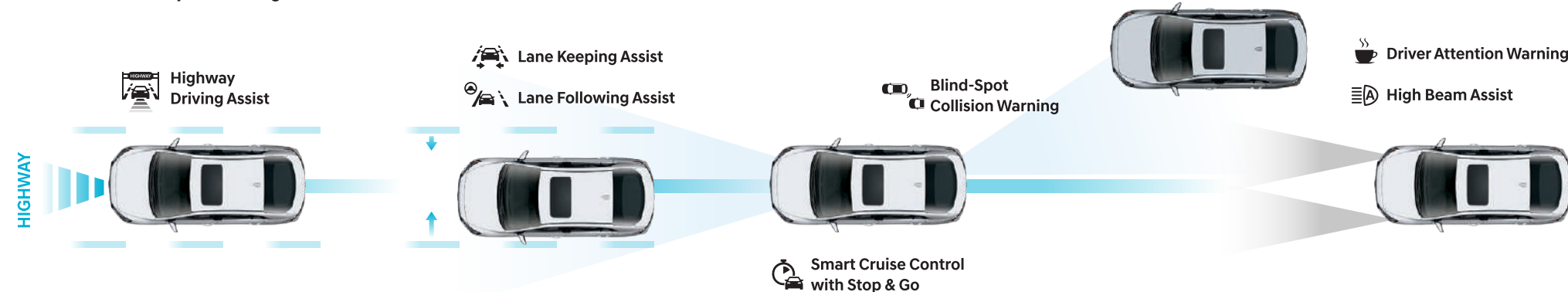


Rearview camera with dynamic guidelines



High Beam Assist

## SmartSense Safety Technologies



<sup>1</sup>Standard and available safety features vary by model and trim level. See the Features section in the back of this brochure or visit [HyundaiUSA.com](http://HyundaiUSA.com) for details regarding specific safety feature availability. <sup>2</sup>Forward Collision-Avoidance Assist (FCA) is designed to assist drivers to avoid, or reduce the severity of, collisions with cars that have slowed or stopped in front of them. It is a supplemental assist and does not replace the need for extreme care and attention by the driver. FCA may not stop the vehicle completely and will not avoid all collisions. Pedestrian Detection helps detect pedestrians, but not in all conditions. See Owner's Manual for details. <sup>3</sup>Lane Keeping Assist operates above approximately 40 mph and only when the lane markings are clearly visible on the road. It will not work under all circumstances and will not prevent loss of control. It is a supplemental assist and does not replace the need for extreme care and attention by the driver. See Owner's Manual for details. <sup>4</sup>It is the driver's responsibility to remain alert at all times. Driver Attention Warning is only a warning to inform the driver of a potential lack of attention or drowsiness. It does not detect and provide an alert in every situation. See Owner's Manual for details. <sup>5</sup>Smart Cruise Control with Stop & Go (SCC) is not a collision-avoidance or warning device. SCC is for highway use only and should not be used in poor weather, heavy or varying traffic, or on winding or slippery roads. The driver remains responsible for slowing or stopping the vehicle to avoid a collision. SCC initiates a full stop when the traffic ahead stops and reengages if the vehicle ahead moves forward within 3 seconds. See Owner's Manual for details. <sup>6</sup>Lane Following Assist (LFA) can help keep your vehicle centered in its lane when the lane markings are clearly visible on the road. LFA will not work under all circumstances and will not prevent loss of control. LFA is a supplemental assist and does not replace the need for extreme care and attention by the driver. See Owner's Manual for details. <sup>7</sup>Blind-Spot Collision Warning (BCW) assists the driver by warning of other cars in the blind spot region. There are limitations to the function, range, detection and clarity of the system. It will not detect all vehicles or objects in the blind spot. BCW may not operate if sensors are obscured in any way. Do not rely exclusively on BCW. BCW is a supplemental system and the driver must be attentive and exercise caution when driving. It is important to always signal, look over your shoulder and through your mirrors before changing lanes. See Owner's Manual for further details and limitations. <sup>8</sup>Rear Cross-Traffic Collision Warning (RCCW) is active when the vehicle is in reverse gear and backing at a speed less than 6 mph. It only engages during the first activation of reverse gear from park and may not detect all vehicles, depending on the size, angle, distance and speed of the other vehicle. Never rely exclusively on RCCW. Always look over your shoulder and use your mirrors to confirm rear clearance. See Owner's Manual for further details and limitations. <sup>9</sup>Highway Driving Assist (HDA) is for highway use only and helps keep your vehicle centered in its lane while maintaining a safe distance from the vehicle ahead. Lane markings must be clearly visible on the road. HDA should not be used in poor weather, heavy or varying traffic, or on winding or slippery roads. HDA will not work under all circumstances and will not prevent loss of control. Driver remains responsible to slow or stop the vehicle to avoid a collision. See Owner's Manual for details and limitations.



# Phone your car.

Use your smartphone to connect with your Ioniq, and you'll like the way it answers. With Hyundai's Blue Link® connected car features, your phone serves as a remote control, useful for unlocking and starting your Ioniq before walking out the door! With your Amazon Echo® or Google Home™ device, you can use voice commands to set your car's cabin temperature from the comfort of your couch or kitchen.<sup>2</sup> Ioniq Electric and Plug-in Hybrid owners can use Blue Link's Remote Charge Management to set charge schedules, check the status of a charge, turn on the climate controls and defroster, and more.<sup>3</sup>

Need driving directions to find an address or points of interest? Blue Link Guidance lets you search using your smartphone, then download the directions to your Ioniq's navigation system.<sup>4</sup> Once you're behind the wheel, Apple CarPlay® and Android Auto™ let you use Ioniq's large touchscreen display or voice commands to access your phone's music playlists, contact lists, texts, phone calls, maps and navigation, and more.

Then there's Blue Link Connected Care. Like all Blue Link packages, it's complimentary for your first three years and offers exceptional peace of mind. If you're in an accident and the airbags deploy, your Ioniq will automatically call for help in a heartbeat.<sup>5</sup> You can also push the SOS button on your rearview mirror for emergency assistance 24/7, 365 days a year.<sup>6</sup> Your Blue Link app can even help law enforcement recover your vehicle if it's ever stolen. Visit HyundaiBlueLink.com for more information on the complete list of innovative features Blue Link puts at your fingertips.

<sup>1</sup> Requires Blue Link Remote package and active Blue Link subscription. <sup>2</sup> Requires Blue Link Remote package. Amazon, Alexa and all related logos and motion marks are trademarks of Amazon.com, Inc. or its affiliates. Google Assistant and Google Home are trademarks of Google Inc. <sup>3</sup> Requires Blue Link Remote package. For remote charging, vehicle needs to be plugged into a 120V or 240V electrical socket. See Owner's Manual for details. <sup>4</sup> Requires Blue Link Guidance package and vehicles equipped with available navigation system. <sup>5</sup> Blue Link agents will contact existing emergency service responders. <sup>6</sup> Requires Connected Care package and active Blue Link account.



Wireless Apple CarPlay



Wireless device charging



Blue Link Remote Access with Amazon Echo and IONIQ Hybrid Limited in Scarlet Red Pearl



### Automatic Emergency Assistance

Blue Link Connected Care offers 24/7 SOS Emergency Assistance and Automatic Collision Notification that calls for help if you're in an accident where airbags deploy.



### On-Demand Diagnostics

Run vehicle diagnostics from your Ioniq's touchscreen, report issues at the press of a button and receive Monthly Vehicle Health Reports or maintenance reminders by email.



### Vehicle Charging Dashboard

Find charging stations, control your Ioniq Electric or Plug-in Hybrid's charging remotely, and schedule charging times at cheaper off-peak hours.



### Remote Controls

Use your smartphone, home assistant or wearable device to remotely start your Ioniq's engine, unlock the doors, set the cabin temperature and more.



### Car Finder

Our Car Finder smartphone app feature lets you navigate your way through crowded parking lots back to your Ioniq.



### Service Link

Conveniently schedule your vehicle for service from the driver seat of your Ioniq or your MyHyundai smartphone app.





**IONIQ Hybrid Blue**



- Popular Features**
- Wireless Apple CarPlay®/Android Auto™
  - Dual automatic temperature control
  - Forward Collision-Avoidance Assist with Pedestrian Detection
  - Lane Keeping Assist and Driver Attention Warning
  - 8" high-resolution touchscreen audio display

**IONIQ Hybrid SEL**



- Popular Features**
- Wireless device charging
  - Lane Following Assist
  - Smart Cruise Control with Stop & Go
  - LED headlights and taillights
  - Power tilt-and-slide sunroof

**IONIQ Hybrid SE**



- Popular Features**
- Blind-Spot Collision Warning
  - Rear Cross-Traffic Collision Warning
  - 7" color LCD instrument cluster display
  - Blue Link® Connected Car Services (3 years complimentary)
  - Heated front seats

**IONIQ Hybrid Limited**



- Popular Features**
- Highway Driving Assist
  - 10.25" high-resolution touchscreen navigation system
  - Leather seats / Driver seat Integrated Memory System
  - Harman Kardon® premium audio system with 8 speakers
  - Front and rear parking sensors

**IONIQ Electric SE**



- Popular Features**
- Forward Collision-Avoidance Assist with Pedestrian Detection
  - Regenerative brake level control paddles
  - DC Fast Charging capability
  - Smart Cruise Control with Stop & Go
  - 7" color LCD instrument cluster display

**IONIQ Electric Limited**



- Popular Features**
- Highway Driving Assist
  - 10.25" high-resolution touchscreen navigation system
  - Harman Kardon® premium audio system with 8 speakers
  - Leather seats / Driver seat Integrated Memory System
  - Wireless device charging

**IONIQ Plug-in Hybrid SE**



- Popular Features**
- Blue Link® Connected Car System (3 years complimentary)
  - Lane Following Assist
  - Heated front seats
  - Forward Collision-Avoidance Assist with Pedestrian Detection
  - Smart Cruise Control with Stop & Go

**IONIQ Plug-in Hybrid SEL**



- Popular Features**
- Blind-Spot Collision Warning
  - Rear Cross-Traffic Collision Warning
  - LED headlights
  - Power driver seat with lumbar support
  - Wireless device charging

**IONIQ Plug-in Hybrid Limited**

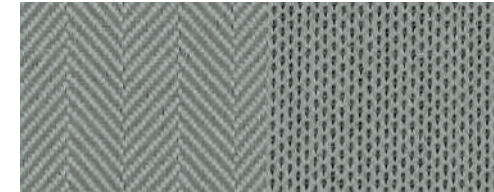


- Popular Features**
- Highway Driving Assist
  - 10.25" high-resolution touchscreen navigation system
  - Harman Kardon® premium audio system with 8 speakers
  - Leather seats / Driver seat Integrated Memory System
  - Power tilt-and-slide sunroof

**Interior Colors**



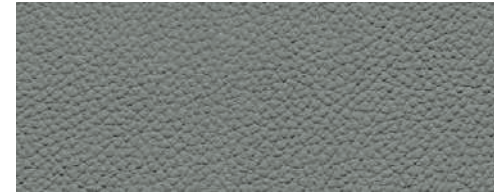
Blue/SE/SEL Black Cloth



Blue/SE/SEL Gray Cloth



Limited Black Leather



Limited Gray Leather

**Exterior Colors**



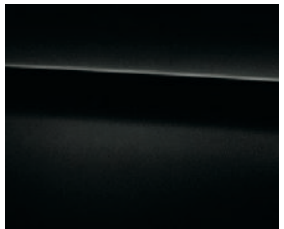
Stellar Silver



Intense Blue



Ceramic White



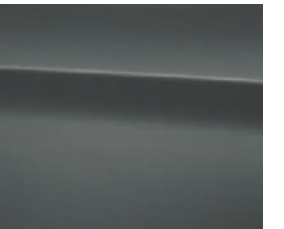
Black Noir Pearl



Amazon Gray Hybrid/Plug-in Hybrid Only



Scarlet Red Pearl Hybrid Only



Electric Shadow Electric Only

**Wheels**

Hybrid Blue 15" Alloy Wheel



Hybrid SE 15" Alloy Wheel



Hybrid SEL/Limited 17" Alloy Wheel



Plug-in Hybrid 16" Alloy Wheel



Electric 16" Alloy Wheel



**IONIQ Hybrid**

1.6L GDI 4-Cylinder

**Total Driving Range 702**

**Electric Motor 32 kW (43 hp)**

EPA MPG Estimates (City/Highway/Combined)<sup>1</sup>

**58/60/59** Blue 6-speed Dual Clutch Transmission

**54/56/55** SE / SEL / Limited 6-speed Dual Clutch Transmission

**IONIQ Plug-in Hybrid**

1.6L GDI 4-Cylinder

**Total Driving Range 620**

**Electric Motor 45 kW (60 hp)**

EPA Combined MPG/MPGe Estimates<sup>1</sup>

**52/119** SE / SEL / Limited 6-speed Dual Clutch Transmission

<sup>1</sup>EPA estimates for comparison only. Mileage may vary. Your actual mileage will vary with options, driving conditions, driving habits and the vehicle's condition. MPGe is the EPA-equivalent measure of gasoline fuel efficiency for electric mode operation. Use for comparison purposes only. Mileage may vary depending on driving conditions, driving habits, the vehicle's condition, the age/condition of the lithium-ion polymer battery, and other factors.

**IONIQ Electric**

**Total Driving Range 170**

**Electric Motor 100 kW (134 hp)**

EPA MPGe Estimates (City/Highway/Combined)<sup>1</sup>

**145/121/133** SE / Limited Electric push-button drive selector



IONIQ	Hybrid Blue	Hybrid SE	Hybrid SEL	Hybrid Limited	Plug-in Hybrid SE	Plug-in Hybrid SEL	Plug-in Hybrid Limited	Electric SE	Electric Limited
<b>Power &amp; Handling</b>									
139 net hp, 1.6L GDI Atkinson Cycle 4-cylinder hybrid engine with 32 kW permanent magnet high-power density motor	●	●	●	●	–	–	–	–	–
139 net hp, 1.6L GDI Atkinson Cycle 4-cylinder hybrid engine with 45 kW permanent magnet high-power density motor	–	–	–	–	●	●	●	–	–
100 kW (134 hp)/218 lb-ft, permanent magnet electric motor with 38.3 kWh lithium-ion polymer battery system	–	–	–	–	–	–	–	●	●
6-speed EcoShift® Dual Clutch Transmission with Sport Mode	●	●	●	●	●	●	●	–	–
Single-speed automatic with push button drive selector	–	–	–	–	–	–	–	●	●
Drive Mode Select	●	●	●	●	●	●	●	●	●
Regenerative brake level control paddles	–	●	●	●	●	●	●	●	●
<b>Exterior Features</b>									
Active grille shutters	●	●	●	●	●	●	●	–	–
Automatic on/off headlights	●	●	●	●	●	●	●	●	●
LED Daytime Running Lights	–	●	●	●	●	●	●	●	●
LED headlights	–	–	●	●	–	●	●	–	●
LED taillights	–	–	●	●	●	●	●	●	●
Integrated rear spoiler with center LED brake light	●	●	●	●	●	●	●	●	●
Chrome side window-line trim	–	–	●	●	–	●	●	–	●
Door handle approach lights	●	●	●	●	●	●	●	●	●
Chrome exterior door handles	–	–	–	●	–	–	●	–	●
Heated outside mirrors	–	●	●	●	●	●	●	●	●
Side mirrors with LED turn signal indicators	–	●	●	●	–	●	●	–	●
Power-folding side mirrors with puddle lights	–	–	–	●	–	–	●	–	●
Power tilt-and-slide sunroof	–	–	●	●	–	–	●	–	●
Rearview camera with dynamic guidelines	●	●	●	●	●	●	●	●	●
<b>Interior Features</b>									
Proximity Key entry with push button start	●	●	●	●	●	●	●	●	●
4.2" color LCD multi-information display with Hybrid Technology Display	●	–	–	–	●	–	–	–	–
7" dual-mode color LCD instrument cluster display	–	●	●	●	–	●	●	●	●
Tilt-and-telescopic steering wheel with cruise controls	●	●	●	●	●	●	●	●	●
Dual automatic temperature control	●	●	●	●	●	●	●	–	–
Automatic temperature control – single zone	–	–	–	–	–	–	–	●	●
Electronic Parking Brake	●	●	●	●	●	●	●	●	●
Power driver seat with adjustable lumbar support	–	●	●	●	–	●	●	–	●
Driver seat Integrated Memory System	–	–	–	●	–	–	●	–	●
Leather-wrapped steering wheel	–	●	●	●	●	●	●	●	●
Leather seating surfaces	–	–	–	●	–	–	●	–	●
Heated front seats	–	●	●	●	●	●	●	●	●
60/40 split-folding rear seats	●	●	●	●	●	●	●	●	●
Floor console-mounted rear vents	–	–	–	●	–	–	●	–	●
Ambient interior lighting and premium door sill plates	–	–	–	●	–	–	●	–	●

IONIQ	Hybrid Blue	Hybrid SE	Hybrid SEL	Hybrid Limited	Plug-in Hybrid SE	Plug-in Hybrid SEL	Plug-in Hybrid Limited	Electric SE	Electric Limited
<b>Interior Features</b>									
LED interior lighting	–	–	●	●	–	–	●	–	●
Rear center armrest with dual cupholders	–	●	●	●	●	●	●	●	●
Power windows with driver auto-down/up	●	●	●	●	●	●	●	●	●
Auto-down/up front passenger window	–	–	●	●	–	●	●	–	●
Auto-dimming rearview mirror with HomeLink®	–	–	●	●	–	●	●	–	●
<b>Advanced Safety</b>									
Forward Collision-Avoidance Assist w/ Pedestrian Detection	●	●	–	–	–	–	–	–	–
Forward Collision-Avoidance Assist w/ Pedestrian and Cyclist Detection	–	–	●	●	●	●	●	●	●
Lane Keeping Assist	●	●	●	●	●	●	●	●	●
Lane Following Assist	–	–	●	●	●	●	●	●	●
Driver Attention Warning	●	●	●	●	●	●	●	●	●
Blind-Spot Collision Warning	–	●	●	●	–	●	●	–	●
Rear Cross-Traffic Collision Warning	–	●	●	●	–	●	●	–	●
High Beam Assist	●	●	●	●	●	●	●	●	●
Smart Cruise Control with Stop & Go	–	–	●	●	●	●	●	●	●
Highway Driving Assist	–	–	–	●	–	–	●	–	●
Front and rear parking sensors	–	–	–	●	–	–	●	–	–
<b>Audio &amp; Connected Car Technology</b>									
8" color touchscreen AM/FM/MP3 display audio	●	●	●	–	●	●	–	●	–
10.25" color touchscreen navigation system	–	–	–	●	–	–	●	–	●
Harman Kardon® premium audio system with 8 speakers and Clari-Fi™ Music Restoration Technology	–	–	–	●	–	–	●	–	●
Apple CarPlay® and Android Auto™ (wireless   wired)	● –	● –	● –	– ●	● –	● –	– ●	● –	– ●
SiriusXM Satellite Radio	–	●	●	●	●	●	●	●	●
Blue Link® Connected Care & Remote packages	–	●	●	●	●	●	●	●	●
Blue Link® Guidance package	–	–	–	●	–	–	●	–	●
Bluetooth® hands-free phone system and HD Radio™	●	●	●	●	●	●	●	●	●
Wireless device charging	–	–	●	●	–	●	●	–	●
Dual front USB charge ports	–	●	●	●	●	●	●	●	●

● Standard – Not Available

Exterior Dimensions	IONIQ	Interior Dimensions	IONIQ	IONIQ	
Wheelbase	106.3 in	Headroom – front (with sunroof) / rear	39.1 (38.2) / 37.4 in	Cargo Capacity – Hybrid	26.5 cu ft
Overall Length	176.0 in	Legroom – front / rear	42.2 / 35.7 in	Cargo Capacity – Plug-in Hybrid & Electric	23.0 cu ft
Overall Width	71.7 in	Shoulder Room – front / rear	56.1 / 55.0 in	Total Interior Volume – Hybrid	122.7 cu ft
Overall Height – Hybrid & Plug-in Hybrid / Electric	56.9 / 58.1 in	Passenger Volume	96.2 cu ft	Total Interior Volume – Plug-in Hybrid & Electric	119.2 cu ft

<b>America's Best Warranty</b>	<b>POWERTRAIN LIMITED WARRANTY</b>	<b>NEW VEHICLE LIMITED WARRANTY</b>	<b>ANTI-PERFORATION WARRANTY</b>	<b>24/7 ROADSIDE ASSISTANCE</b>	<b>HYBRID/ELECTRIC SYSTEM COMPONENTS</b>
	<b>10 YEARS 100,000 MILES</b>	<b>5 YEARS 60,000 MILES</b>	<b>7 YEARS UNLIMITED MILES</b>	<b>5 YEARS UNLIMITED MILES</b>	<b>10 YEARS 100,000 MILES</b>

See your authorized Hyundai dealer for LIMITED WARRANTY details.





Hyundai Hope On Wheels®

Helping Kids Fight Cancer Since 1998



## Hope makes every Hyundai better.

Each time we sell a Hyundai, a portion goes to Hyundai Hope On Wheels® to help find a cure for childhood cancer. Over the last 22 years, Hyundai Hope On Wheels has donated more than \$172 million. Hope is our greatest feature. And it comes standard on every Hyundai. For more information, please visit [HyundaiHopeOnWheels.org](http://HyundaiHopeOnWheels.org).



**Hyundai**  
Complimentary  
Maintenance

Complimentary maintenance includes Hyundai-approved oil and oil filter change (except for electric vehicles and fuel cell electric vehicles) plus tire rotation at normal factory scheduled maintenance intervals for 3 years or 36,000 miles, whichever comes first. More frequent maintenance due to severe driving or conditions is excluded. Offer valid only for new 2020-2021 Hyundai models purchased or leased on or after February 1, 2020. See your Hyundai dealer for further details and limitations.

**HYUNDAI**  
**Assurance**  
[HYUNDAIASSURANCE.COM](http://HYUNDAIASSURANCE.COM)

Our commitment to Hyundai owners does not end with the transfer of keys. Wherever the road takes you, we've got your back with Hyundai Assurance, an umbrella of services and benefits that includes America's Best Warranty, 24/7 Roadside Assistance, innovative safety and car care features...and more.

Fuel economy estimated by EPA for comparison only. Mileage may vary. While the information contained in this brochure was correct at the time of printing, specifications and equipment can change. Feature comparisons based on competitor information available at the time of printing. No warranty or guarantee is being extended in this brochure, and Hyundai reserves the right to change product specifications and equipment at any time without incurring obligations. Some vehicles are shown with optional equipment. Specifications apply to U.S. vehicles only. Please contact your Hyundai dealer for current vehicle specifications. As part of Hyundai's commitment to a responsible environment, this brochure was printed using paper certified by the Forest Stewardship Council.® FSC® certification helps ensure that the highest social and environmental standards are met in the making of the paper we use, contributing to conservation, responsible management and community-level benefits for people near the forests.

