



# All-new i20







# We have a passion for progress.

The “can-do” spirit is at the heart of Hyundai’s heritage. It’s the attitude of progressing, no matter what. From humble beginnings, this vision has driven us to seek new challenges, encapsulated since our founding in the name ‘Hyundai’ – meaning ‘modern times’.

It’s the persistent curiosity for what lies ahead. Of always chasing the next. What was once a man’s desire for better is today the ethos of an entire company. As our founder said: “How does one know it’s impossible if one hasn’t tried it?”

Progress doesn’t happen by chance. We’re always pushing the borders of the possible, building tomorrow’s technology today, and powering the future with an ever-evolving range of zero-emission engines, seamless in-car connectivity and more.

We’ve come a long way. And we won’t stop here. Next awaits.

Car shown all-new i20 Premium in Aurora Grey.





# The all-new i20. With Attraction Control.

Building on a heritage of technology with eye-catching design and controlled power.



Car shown all-new i20 Premium in Aurora Grey.

The all-new i20 has been completely re-designed to be better all round. Better looking, better performing, better connected, and better at keeping you safe. With dynamic new styling, upgraded technologies and our 48 Volt Hybrid engine as standard, the third generation all-new i20 embraces the concept of sensuous sportiness.



# Designed to deliver, styled to stand out.

Combining form and function to stand out in style.



The all-new i20 is designed to deliver: Safe and exhilarating, poised and powerful, connected and clean. Stunning styling features are led by the dynamic front grille and rear light cluster with enhanced LED lighting. Inside, premium audio and touch controls provide a feast for the senses.



Car shown all-new i20 Premium in Aurora Grey.





# For the love of the road.

Dynamic, emission friendly driving from advanced technology and transformational design.



10.25" Touchscreen Navigation makes multi-media access easy.

In a vehicle this well-equipped you might think we've forgotten about the joy of driving. We haven't. Technology and safety systems add to the pure driving pleasure of owning the all-new i20, and our 48 Volt Hybrid engine delivers the smooth, poised performance you've been looking for. With transformational design throughout, the all-new i20 is styled for the open road.



# Clearly Connected.

The all-new i20 comes with advanced infotainment from integrated mobile and vehicle technology.



Blueink® Connected Car Services. Available on Premium and Ultimate.



New 10.25" Digital Cluster. Standard across all models.



In case of emergency, eCall directs first responders to you – fast. Standard across all models.



Mobile wireless charging brings convenience to the cabin. Available on Ultimate.

We've boosted connectivity with improved technology and a seamless interface for your phone. Apple CarPlay™ and Android Auto™ mean you can take your apps on the road, and additional integrated mobile Blueink® Connected Car Services put you in close control even when you're away from the car. With the eCall button providing emergency safety as standard, the all-new i20 puts you in touch with the world.



Car shown all-new i20 Premium. Car shown not to UK Specification.





# The seat of power.

A spacious and elegant interior designed with the driver in mind.



The all-new i20 has a spacious 5-seat interior layout.



Smooth manual gear change with the advanced E-clutch.



Automatic all-new i20 with Dual Clutch Transmission for efficiency.

The all-new i20 has been redesigned with a longer wheelbase and wider chassis for poise, better handling and a more spacious interior. From the driver's seat, refinement comes with a 10.25" Digital Cluster as standard on every model, easy reach instrument controls, and the Bose Premium sound system available on Ultimate to power your drive.

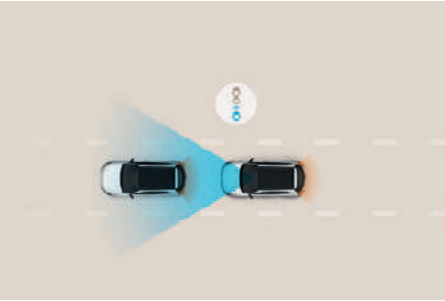


# Safety never stops.

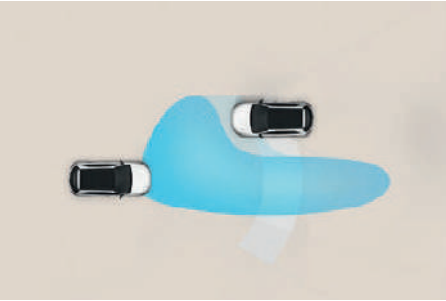
Advanced technology for always-on awareness.



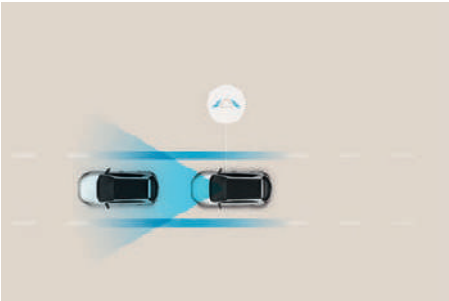
**Driver Attention Warning (DAW):** When a pattern of fatigue or distraction is identified, the system gets your attention with an alert and pop-up message suggesting a break.



**Front Collision Avoidance (FCA):** The front view camera and radar sensors warn drivers of imminent collisions with vehicles and objects, applying the brakes when necessary to avoid collisions.



**High Beam Assist (HBA):** Less stress and maximum visibility. HBA not only detects oncoming vehicles but also vehicles in the same lane ahead and switches to low-beam as appropriate.



**Lane Follow Assist (LFA):** Smart sensors and the forward-facing camera detect when the car drifts from the centre of the lane, applying steering torque to maintain road positioning for safety. The car also estimates the trajectory of the vehicle ahead and adjusts its position accordingly.



**Lane Keeping Assist (LKA):** The Lane Keeping Assist (LKA) uses the front multi-function camera to monitor the lines of the road. In case of an unintended lane departure, it warns you and can apply counter steering torque to guide the car back to the lane.



**Blind Spot Collision Warning (BCW):** Radars detect traffic in the vehicle blind spot, warning drivers with an audible alarm when the indicator is used so you can be aware of the traffic around you even when you can't see it.

The all-new i20 takes passenger protection to the next level with the latest safety equipment onboard. An emergency eCall button, rear parking sensors and rear-view camera feature on every model, with Lane Keep Assist and Forward Collision Avoidance driver assist technologies as standard. An additional Smartsense Safety Package is available on the Ultimate specification, including Lane Follow Assist and Blind Spot Warning systems. With the all-new i20, your safety comes as standard.



Car shown all-new i20 Premium in Aurora Grey.









Car shown: all-new i20 N Line in Polar White with optional Phantom Black Two Tone Roof.



# Sports personality.

Powerful and energetic, i20 N Line makes a bold statement inside and out.



N Line body kit and chrome twin exhaust.



Unique 17 inch alloy wheels.



Alloy pedals and leather-wrapped gear stick.



Leather-wrapped steering wheel.



Black with red stitching throughout.

The i20 N Line features sporty design elements inspired by Hyundai's high-performance N range, combined with the efficiency of 48 Volt Mild Hybrid technology. You'll notice it immediately in the unique front grille, front and rear bumpers, 17 inch alloy wheels and chrome twin exhaust muffler. There's also the option of a two tone roof and glossy black wing mirrors. Its motorsport roots are just as apparent on the inside with signature N branding, red stitching and red accents throughout. The alloy pedals and leather-wrapped steering wheel and gear stick all add to the N Line's appeal.

But it's not just about looking the part. The more powerful 120 PS 1.0 litre T-GDi 48V Mild Hybrid engine – exclusive to N Line and available with either a manual or DCT transmission – ensures you'll feel the part too, every time you get behind the wheel.

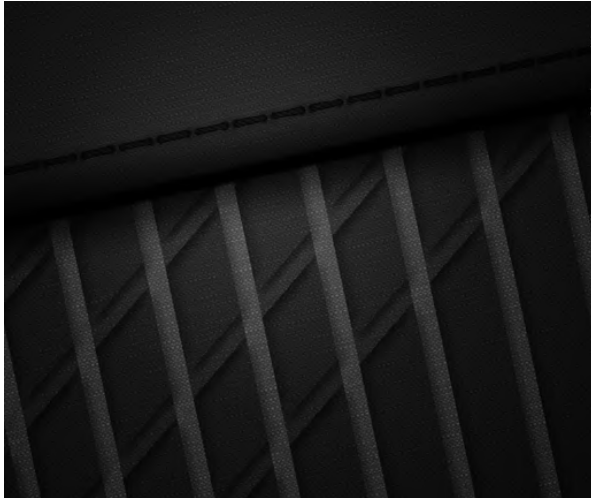


# Easy on the Eye.

The stylish interior highlights the instrument cluster and vehicle controls.



Black Cloth seat available on SE Connect, Premium and Ultimate.



Black Cloth seat available on SE Connect, Premium and Ultimate.



Black and Red N-branded seat exclusive to N Line.



Black Mono standard on SE Connect and Premium.



Black and Grey standard on Ultimate.



Black and Red exclusive to N Line.



Car shown all-new i20 Premium.



Single colours (not available on Ultimate):



Polar White – Solid



Sleek Silver – Metallic



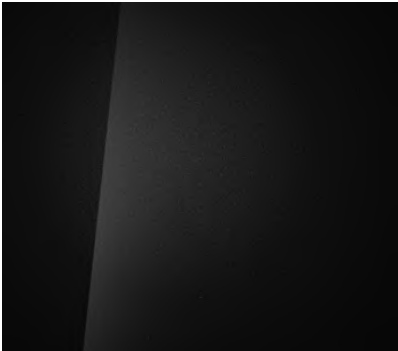
Brass – Pearl



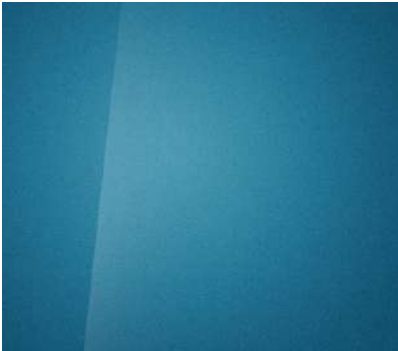
Aurora Grey – Pearl



Dragon Red – Pearl



Phantom Black – Pearl



Aqua Turquoise Blue – Pearl



Intense Blue – Pearl



Mangrove Green – Pearl

Colours available with Two Tone Roof (N Line and Ultimate only)\*



Polar White/Phantom Black – Solid



Sleek Silver/Phantom Black – Metallic



Brass/Phantom Black – Pearl



Dragon Red/Phantom Black – Pearl



Aqua Turquoise/Phantom Black – Pearl



Intense Blue/Phantom Black – Pearl



Mangrove Green/Phantom Black – Pearl

\*Two Tone Roof is optional on N Line and standard on Ultimate.





SE Connect offers the following features as standard:

- 8" Touchscreen Display Audio
- 10.25" Digital Cluster
- 16" Alloy Wheels
- 48 Volt Hybrid Technology
- Apple CarPlay™ / Android Auto™
- Driver Attention Warning (DAW)
- DRL Inserts in Bumper
- eCall button
- Front Collision Avoidance (FCA)
- High Beam Assist (HBA)
- Intelligent Speed Limit Warning (ISLW)
- Lane Keeping Assist (LKA)
- Rear Parking Sensors
- Rear View Camera

Car shown all-new i20 SE Connect in Aurora Grey.



N Line offers the following features over SE Connect:

- 10.25" Touchscreen Navigation with Bluelink®
- 17" Exclusive N Line Alloy Wheels
- Auto Dimming Rear View Mirror
- Auto Wipers
- Climate Control
- Dual Exhaust Muffler
- Electric Folding Mirrors
- Front Armrest
- Front Fog Lights
- Interior Mood Lighting
- LED Tail Lamps
- N Line Badging, Body Kit and Radiator Grille
- N Line Interior Branding, Accents and Seat Trim
- Rear Privacy Glass
- Rear USB Port
- Signature DRL Integrated into LED Headlamp
- Smart Key / Keyless Entry
- Two Tone Roof – Black (Optional)

Car shown all-new i20 N Line in Polar White with optional Phantom Black Two Tone Roof.





Premium offers the following features over SE Connect:

- 10.25" Touchscreen Navigation with Bluelink®
- 17" Alloy Wheels
- Auto Dimming Rear View Mirror
- Auto Wipers
- Chrome Window Surround
- Climate Control
- Electric Folding Mirrors
- Front Armrest
- Front Fog Lights
- Heated Front Seats & Steering Wheel
- Interior Mood Lighting
- LED Tail Lamps
- Rear Privacy Glass
- Rear USB Port
- Signature DRL Integrated into LED Headlamp

Car shown all-new i20 Premium in Dragon Red.



Ultimate offers the following features over Premium:

- Blind Spot Collision Warning (BCW)
- BOSE Premium Sound System
- Forward Collision Assist (with cyclist detection)
- Grey Dashboard Detail / Interior
- Lane Follow Assist (LFA)
- Smart Key / Keyless Entry
- Two Tone Roof – Black (Comes as standard)
- Wireless Charging Pad

Car shown all-new i20 Ultimate in Intense Blue with Phantom Black two tone roof.



# To fit your needs.

Choose from a range of selected style accessories to make your all-new i20 all yours.



Velour floor mats.



Boot mat.



All-weather mats with grey accent.



Boot liner.



Entry guards.



Speed stripe decals – available in black or white.



Racing stripe decals – available in black or white.



Rear bumper trim – Phantom Black.



Front lamp trim – Phantom Black.

From exclusive trims and exquisite exterior detailing to gentle or rugged interior protection, our range of accessory options are made to match the demands of your lifestyle. With boot liners and all-weather mats to serve and protect, or soft velour mats to cushion the ride, the choice is yours to take the all-new i20 to the next level of refinement.



Specifications shown in this brochure are based upon the latest available information at the time of printing. The colours and finishes reproduced in this brochure are subject to the limitations of the printing process and may vary from the actual colour and paint finish.

In line with our policy of continual product improvement Hyundai Motor UK Ltd reserves the right to make changes at any time, without notice, to prices, colours, material, design, shape, specifications and models, and to discontinue items. For the latest details, please consult your Hyundai dealer.

Your local Hyundai dealer:



This brochure is printed on FSC® (Forestry Stewardship Council) certified paper which has been produced at a mill and printed by a printer that has been certified to the ISO 14001 environmental standard using vegetable oil based inks and aqueous based coatings. It can be disposed of by recycling, incineration for recovery or is biodegradable.

Customer enquiries: 0800 981 981



Hyundai Motor UK Ltd  
Ground Floor Birchwood Building The Office Park  
Springfield Drive, Leatherhead KT22 7LP  
T: 01494 428600 [www.hyundai.co.uk](http://www.hyundai.co.uk)

Car shown all-new i20 Premium in Aurora Grey.  
Model on front cover: Car shown all-new i20 Premium in Aurora Grey.  
HB0012 02/21