



# All-new i10







## It's a Big Day.

Welcome to the All-new i10. Designed for modern driving, it's big on safety, big on connectivity, and big on space. Focused on the future, the All-new i10 is inspired by you and designed for life.

For technical information and data on the All-new i10 please visit [www.hyundai.co.uk](http://www.hyundai.co.uk)

Also, introducing the All-new i10 N Line. Combining assertive agility and sensuous styling, the N Line is designed for more. Arriving in style at Hyundai dealerships soon.



Cars shown All-new i10 N Line in Slate Blue and All-new i10 Premium in Aqua Turquoise with optional two-tone roof.

HYUNDAI All-new i10



# Go ahead. Make a big statement.

Designed for the modern world, the All-new i10 may seem like a small car, but it makes a big statement. Class leading connectivity combined with the latest Hyundai Smartsense active safety features showcase advanced technology throughout.

Featuring a youthful and dynamic design, the All-new i10 offers increased interior space and personality - it's a clever companion that gives you the style and flexibility you need to Go Big.



Car shown All-new i10 Premium in Aqua Turquoise with optional two-tone roof.





# Go big and beautiful.

Travel in style with the ride that gets you where you want to go comfortably and safely - and with all eyes on you. The All-new i10 — bigger and bolder than before.



**Cascading grille:** The expressive shape of the new cascading grille and LED Daytime Running Lights emphasises the confident character of the All-new i10.



**Two-tone roof:** Selected All-new i10 models feature eye-catching two-tone roof options



**Wheels:** 16" alloy wheels add sporting poise and a confident finish to the style of the All-new i10.

The All-new i10 is built to be agile, with sleek, stylish features designed to turn heads. Strikingly sculpted from bonnet to boot with a cascading grille, stunning alloy wheels and LED Daytime Running Lights, as well as a two-tone roof on selected models and redesigned front end that'll make jaws drop on your journey. Big on character and big on charisma, the flowing lines of the All-new i10 are made to move.



# Big on flexibility, big on technology, big on style.

Advanced comfort and convenience in a compact car. Enjoy your time behind the wheel and stay in touch with the rest of the world with multimedia connectivity and an intuitive in-car interface.



8" Touchscreen Navigation makes multi-media access easy.



In case of emergency, e-Call directs first responders to you - fast.



Mobile wireless charging brings convenience to the cabin.



Honeycomb dash design adds 3D elegance to selected models.

We've gone big on flexibility with the All-new i10, giving you an attractive and comfortable cabin with the latest multimedia technology. Everything is seamlessly integrated into the elegantly designed dashboard, from Blue Link™ and sat nav to wireless mobile charging on selected models, and an 8" interface screens. With next-generation styling, an array of design options, and premium features like heated seats, you and your passengers can sit back and enjoy the ride in safety and in style.



Car shown All-new i10 Premium in Aqua Turquoise with Brass Metal interior option.





# Get connected to the bigger picture.

The All-new i10 offers class-leading connectivity, with a range of advanced technology functions fully integrated into the 8" colour touchscreen.



8" Multi-media display features Rear View Camera, dynamic AR guidelines and complete smartphone connectivity – available on SE Connect and above.

The All-new i10 is a pioneer in its class. An 8" touchscreen display, seamless mobile integration with Apple CarPlay and Android Auto to sync your smart phone and mirror its functionality, and a rear-view camera to guide you into those tight spaces come as standard on the SE Connect and above. Advanced Blue Link™ telematics and wireless charging, are available on the All-new i10 Premium with the optional Hyundai Tech Pack.



# Even more of a good thing.

With precision designed inner space, 5 seats and one of the biggest boots in its class, the All-new i10 has room to spare. Smart design at every level has focused on making the car fit your lifestyle, not the other way round.



The All-new i10 boasts one of the largest boots in its class, with a capacity of up to 252 litres.

The All-new i10 interior has been redesigned with even more space inside. With a longer wheelbase there's plenty of room and the chance to stretch your legs, so five people can sit in comfort and still have 252 litres for luggage to boot, expanding to over 1,000 litres when the seats are down. With one-handed seat folding and a 60/40 seat configuration to make even more of the space available, the All-new i10 is a transport of delight.



Car shown All-new i10 Premium in Aqua Turquoise and Shale Grey interior option with optional two-tone roof.





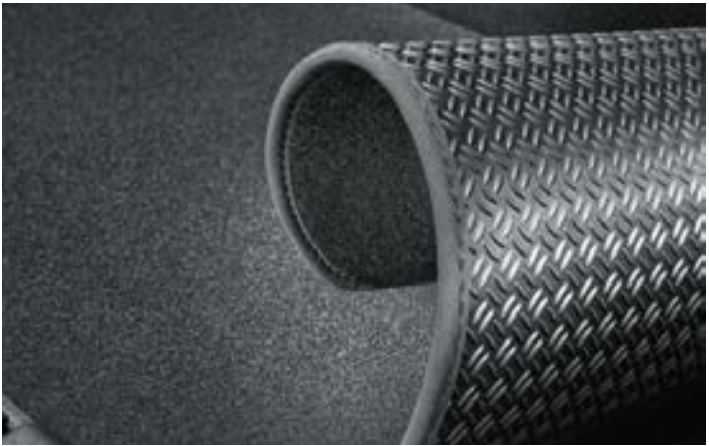


# Making a Big impression.

The All-new i10 has been engineered for poise and performance, with refined design and even more inner space, but it's the little things that add up to make a bold statement. Choose from a range of Hyundai Genuine Accessories to make the All-new i10 all your own with inspired extras for that personal touch. Your style, your way - with the All-new i10.



Velour texture floor mats



Reversible trunk mat



All weather mats with grey accent



Trunk liner



Entry Guards



Exterior styling kit consisting of a rear bumper trim line, side skirts and a tailgate trim



Speed stripe decals



Side door mouldings mudguard



Rear bumper protection in black foil and transparent foil









# Hyundai SmartSense.

Taking safety to the next level.



**Lane Keeping Assist:** The Lane Keeping Assist (LKA) uses the front multi-function camera to monitor the lines of the road. In case of an unintended lane departure, it warns you and can apply counter steering torque to guide the car back to the lane.



**High Beam Assist (HBA):** Less stress and maximum visibility. HBA not only detects oncoming vehicles but also vehicles in the same lane ahead and switches to low-beam as appropriate.



**Driver Attention Warning (DAW):** When a pattern of fatigue or distraction is identified, the system gets your attention with an alert and pop-up message suggesting a break.



**Forward Collision-Avoidance Assist (FCA):** Sensing the road ahead with the multi-function camera, FCA warns you and then automatically brakes when it detects sudden braking by a car ahead. Includes pedestrian detection.



**Leading Vehicle Departure Alert (LVDA):** This clever feature for city driving alerts the driver when the vehicle in front departs from an idle state, like at a stoplight or in a traffic jam.



**Intelligent Speed Limit Warning (ISLW)\*:** Recognizes road speed signs and displays the speed limit in real time in both the navigation system display and instrument cluster.

With the All-new i10, the concept of road safety has changed in your favour. With a vast array of Smart Sense technology on board as standard, automated sensors assist awareness and make safe driving even easier. Lane Keep Assist and Lane Departure Warnings make sure you stay where you're supposed to, with Intelligent Speed Limit Warning\* and Forward Collision Warnings and Driver Attention Alerts reading the road for you. E-call is also on board as standard - this feature automatically calls emergency services if you're in an accident and the airbags deploy. You can also push the SOS button for emergency assistance 24/7, 365 days a year.

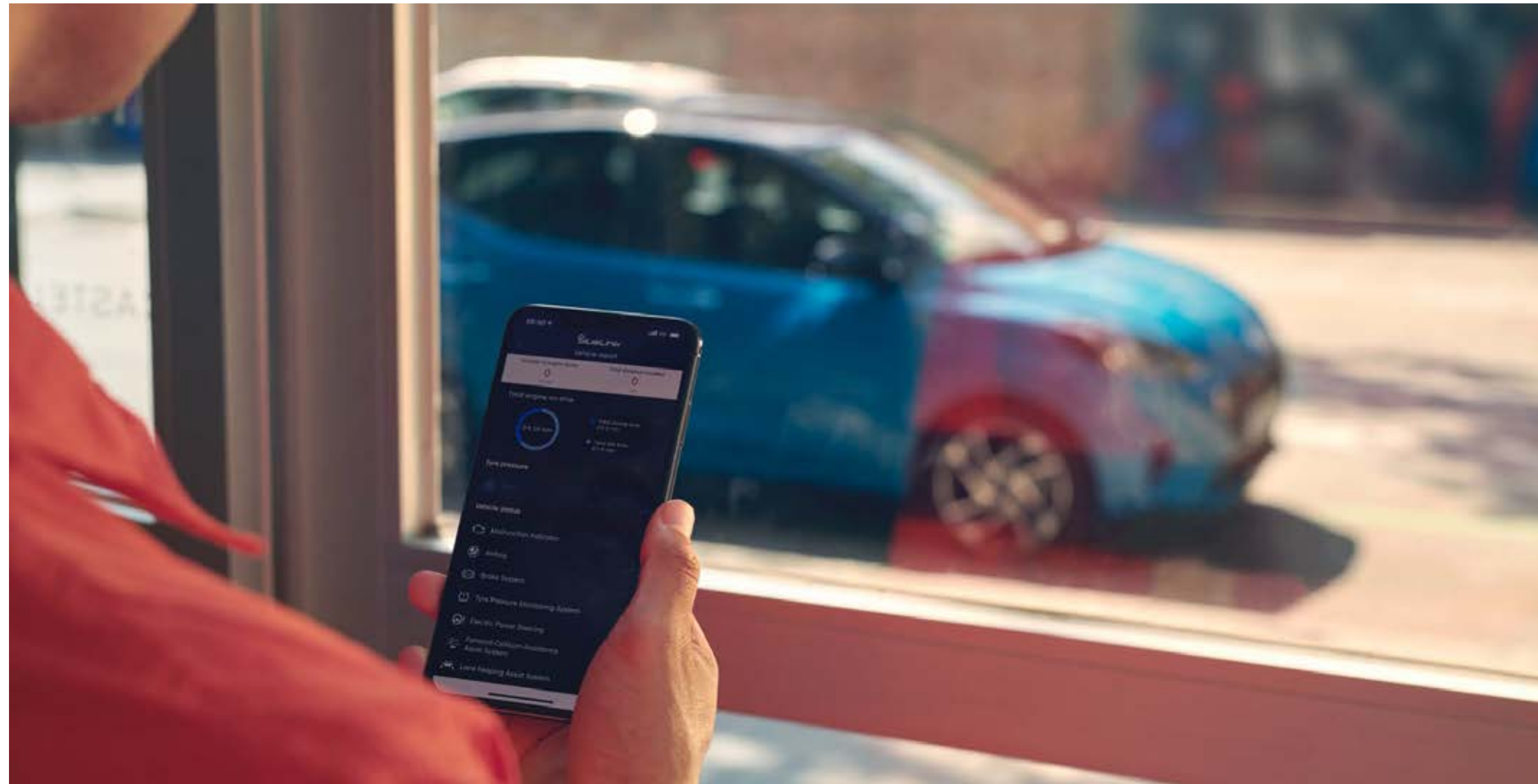


# Connecting the All-new i10 to your lifestyle.

Blue Link™ Connected Car Services bring seamless connectivity directly into the All-new i10, with online voice recognition and a wide range of features to make your drive more convenient and enjoyable. Be in tune with your ride with Find my car, remote door lock & unlock, and destination send to car.



We're changing the way we interact with cars and technology — with Blue Link™ from Hyundai leading the way. Available in the All-new i10 optional Tech Pack, Blue Link™ gives seamless connectivity in-car and in-app. A free five-year subscription to Hyundai's LIVE Services lets you make the most of Bluelink® Connected Car Services, with real-time traffic information giving you the fastest route for the conditions, so you save time on the road and know precisely when you're going to arrive.



Car shown All-new i10 Premium in Aqua Turquoise with optional two-tone roof.









SE offers the following features as standard:

- 5 Seats
- 14" Steel Wheels with Wheel Covers
- Air Conditioning - Manual
- Bluetooth® Connectivity
- Cruise Control with Speed Limiter
- DAB Radio
- Daytime Running Lights – Halogen
- Door Mirrors – Electric Adjustment and Driver Attention Alert (DAA)
- e-Call
- Electric Mirror Adjustment
- Electric Windows – Front and Rear
- Forward Collision Avoidance Assist (FCA)
- Forward Collision Warning System (FCWS)
- High Beam Assist (HBA)
- Hill-start Assist Control (HAC)
- ISG
- Lane Departure Warning System with Lane Keep Assist (LKAS)
- Leather Wrapped Steering Wheel and Gear Knob
- Steering Wheel Audio, Phone and Cruise Controls
- Tyre Repair Kit



SE Connect offers the following features over SE:

- 2 Rear Speakers
- 8" Touchscreen Display Audio with Smart Device Integration & DAB
- 15" Alloy Wheels
- Bluetooth® Connectivity with Voice
- Phone Connection - Android Auto™
- Phone Connection - Apple CarPlay™
- Rear View Camera with Dynamic Guidelines
- Bluetooth® Connectivity with Voice Recognition





Premium offers the following features as standard:

- 16" Alloy Wheels
  - Daytime Running Lights - LED
  - Fog Lights - Front
  - Front Seats - Heated
  - Halogen Bi- Function Projection
  - Headlights – Bi - Function Projection Headlamps
  - Heated Steering Wheel
  - Position Lamp (Headlamps)
  - Privacy Glass - Rear Windows and Tailgate
  - Upgraded Interior Package
- Optional extras**

  - **Two-tone Roof**
  - **Tech Pack**

Tech pack features

  - BlueLink (Telematics)
  - Centre Console Display - 8" Touchscreen
  - Intelligent Speed Limit Warming (ISLW)
  - Wireless Charging Pad
  - LIVE Services & DAB Navigation with Smart Device Integration

# Interior trims

Obsidian Black White Stripes



Obsidian Black White Stripes available on SE/SE Connect trims

Shale Grey



Brass Metal available on Premium trim

Brass Metal



Shale Grey available on Premium trim



Black1tone Red Point available on N Line





Polar White – Solid



Stardust Grey – Metallic



Phantom Black – Pearl



Tomato Red – Solid



Champion Blue – Metallic



Brass – Metallic



Dragon Red – Pearl



Slate Blue – Metallic



Sleek Silver – Metallic



Aqua Turquoise – Metallic

## Red Two-tone roof

Available on Premium with these exterior colours:



Phantom Black



## Black Two-tone roof

Available on Premium with these exterior colours:



Dragon Red



Brass



Champion Blue



Polar White



Aqua Turquoise



Slate Blue





All-new i10	SE	SE Connect	Premium
ENGINE AND TRANSMISSION			
1.0 Petrol – 5 Speed Automated Manual Transmission (AMT) (67PS)	-	•	•
1.0 Petrol – 5 Speed Manual Transmission (67PS)	•	•	•
1.2 Petrol – 5 Speed Automated Manual Transmission (AMT) (84PS)	-	•	•
1.2 Petrol – 5 Speed Manual Transmission (84PS)	-	•	•
EXTERIOR STYLING			
14" Steel Wheels with Wheel Covers	•	-	-
15" Alloy Wheels	-	•	-
16" Alloy Wheels	-	-	•
B Pillar – Black	•	•	•
Bumpers – Body Coloured	•	•	•
Door Mirrors – Body Coloured	•	•	•
Exterior Door Handles – Body Coloured	•	•	•
Front Grille – Glossy Black	-	-	•
Front Grille – Matte Black	•	•	-
Rear Spoiler with Integrated Brake Light	•	•	•
Solid Paint	•	•	•
INTERIOR			
Honeycomb Design Detail (Dash & Door)	-	-	•
Interior Door Handles – Metal Paint Effect	•	•	•
Leather Wrapped Steering Wheel and Gear Knob	•	•	•
SEATING			
5 Seats	•	•	•
Driver's Seat Height Adjustment (Manual)	•	•	•
Front Seats – Heated	-	-	•

All-new i10	SE	SE Connect	Premium
Head Restraints – Vertical and Horizontal Adjustment (Front)	•	•	•
Head Restraints – Vertical Adjustment (Rear)	•	•	•
Rear Seats – Split Folding (60/40)	•	•	•
Seat Trim – Cloth (Brass Metal)	-	-	•
Seat Trim – Cloth (Obsidian Black & White Stripe)	•	•	-
VENTILATION & VICIBILITY			
Air Conditioning – Manual	•	•	•
Auto Light Control	•	•	•
Daytime Running Lights – Halogen	•	•	-
Daytime Running Lights – LED	-	-	•
Fog Lights – Front	-	-	•
Front Windscreen Wipers – Intermittent Function	•	•	•
Headlights – Bi - Function Projection Headlamps	-	-	•
Headlights – Halogen	•	•	-
High Beam Assist (HBA)	•	•	•
Indicator Lights – Door Mirror	•	•	•
Interior Light – Cabin and Luggage Compartment	•	•	•
Privacy Glass – Rear Windows and Tailgate	-	-	•
Rear Windscreen Wiper – 1 Speed Non Intermittent	•	•	•
CONVENIENCE			
12V Power Outlet in Front Console	•	•	•
Bottle Holders – Front Centre Console, Front and Rear Doors	•	•	•
Cruise Control with Speed Limiter	•	•	•
Door Mirrors – Electric Adjustment and Heated	•	•	•
Electric Windows – Front and Rear	•	•	•

All-new i10	SE	SE Connect	Premium
Glove Compartment	•	•	•
Heated Steering Wheel	-	-	•
Rear View Camera	-	•	•
Steering Column – Height Adjustable	•	•	•
Tyre Repair Kit	•	•	•
TECHNOLOGY & ENTERTAINMENT			
Bluetooth® Connectivity*	•	-	-
Bluetooth® Connectivity with Voice Recognition*	-	•	•
Centre Console Display – 8" Touchscreen Display Audio with Smart Device Integration & DAB	-	•	•
Phone Connection – Android Auto™ †	-	•	•
Phone Connection – Apple CarPlay™ †	-	•	•
Radio – Digital DAB	•	-	-
Speakers – 2 Front	•	-	-
Speakers – 2 Front, 2 Rear	-	•	•
Steering Wheel Audio, Phone and Cruise Controls	•	•	•
Trip Computer	•	•	•
USB Connectivity Port – 1 Front	•	•	•
SAFETY & SECURITY			
Airbag – Front Passenger De-Activation Switch	•	•	•
Airbags – Front, Front Side & Curtain Airbags	•	•	•
Alarm and Immobiliser	•	•	•
Anti-lock Brake System (ABS)	•	•	•
Autonomous Emergency Braking (AEB) with Forward Collision Warning System	•	•	•
Brake Assist System (BAS)	•	•	•
Central Locking – Remote Control	•	•	•

All-new i10	SE	SE Connect	Premium
Driver Attention Alert (DAA)	•	•	•
eCall	•	•	•
Electronic Stability Control (ESC)	•	•	•
Hill-start Assist Control (HAC)	•	•	•
Lane Departure Warning System with Lane Keep Assist (LKAS)	•	•	•
Tyre Pressure Monitoring System (TPMS)	•	•	•
OPTIONAL EQUIPMENT			
Premium Tech Pack (Navigation, Bluelink, ISLW, Wireless Charging)*	-	-	o
Seat Trim – Cloth (Shale Grey)	-	-	o
Two Tone Roof – Black	-	-	o
WARRANTY**			
12 Years' Anti-Perforation Warranty	•	•	•
Five Year Annual Vehicle Health Checks	•	•	•
Five Year Unlimited Mileage Warranty	•	•	•

• Standard      o Optional at extra cost

\* Please contact your dealer for the latest list of compatible phones.

† Apple CarPlay™ is a trademark of Apple Inc. Android™ is a trademark of Google Inc. Compatible Smartphone required. The Bluetooth® word mark and logos are registered trademarks owned by the Bluetooth SIG, Inc. and any use of such marks by Hyundai Motor UK Ltd is under license. Other trademarks and trade names are those of their respective owners.

‡ LIVE Services includes a 5 year subscription. Hyundai's MapCare includes a map update every year until your car's 10th anniversary. Please contact your dealer for full details.

5 Year Unlimited Mileage Warranty terms and exclusions apply. Please see [www.hyundai.co.uk](http://www.hyundai.co.uk) or ask your local dealer for full terms and exclusions.



All-new i10	1.0 MPI 67PS 5 Speed Manual 2WD	1.0 MPI 67PS 5 Speed Manual AMT 2WD	1.2 MPI 84PS 5 Speed Manual 2WD	1.2 MPI 84PS 5 Speed ATM 2WD
ENGINE				
Euro Status	EURO 6d Temp			
Type	3 Cylinder DOHC	3 Cylinder DOHC	4 Cylinder DOHC	4 Cylinder DOHC
Valve	12	12	16	16
Displacement (cc)	998	998	1,197	1,197
Bore and Stroke (mm)	71.0 x 84.0	71.0 x 84.0	71.0 X 75.6	71.0 X 75.6
Compression Ratio	11.0			
Max Power (PS/kW)	67/49.3 @ 5,500 rpm	67/49.3 @ 5,500 rpm	84/61.8 @ 6,000 rpm	84/61.8 @ 6,000 rpm
Torque (Nm/lbs ft)	96/70.8 @ 3,750 rpm	96/70.8 @ 3,750 rpm	118/87.0 @ 4,200 rpm	118/87.0 @ 4,200 rpm
Top Speed (mph)	97	97	106	106
SUSPENSION				
Front/Rear	MacPherson Strut/Coupled Torsion Beam Axle (CTBA)			
STEERING				
System	Motor Driven Power Steering (MDPS)			
Steering Wheel Lock to Lock Turns	2.64			
Turning Circle (metres)	4.86			
BRAKE				
System	ABS System with front and rear discs			
Front	Ventilated Disc			
Rear	Leading/Trailing			
DIMENSIONS				
Overall Length (mm)	3,670			

All-new i10	1.0 MPI 67PS 5 Speed Manual 2WD	1.0 MPI 67PS 5 Speed Manual AMT 2WD	1.2 MPI 84PS 5 Speed Manual 2WD	1.2 MPI 84PS 5 Speed ATM 2WD
Overall Width (mm) (Excluding Door Mirrors)	1,680			
Overall Width (mm) (Including Door Mirrors)	-			
Wheelbase (mm)	2,425			
WEIGHT AND CAPACITY				
Kerb Weight (kg)*	921	924	932	935
Payload (kg)†	-			
Gross Vehicle Weight (kg)‡	1,410	1,410	1,430	1,430
Max Tow Weight (kg) – Braked	-			
Max Tow Weight (kg) – Unbraked	-			
Gross Train Weight (kg)	-			
Noseweight (kg)	-			
Max Roof Weight (kg)	-			
Fuel Tank Capacity (litre)	36			
SE				
Front/Rear Tyre	175/65R14	-	-	-
Front/Rear Wheel	5.5J x 14 (Steel)	-	-	-
Front/Rear Track	1,467/1,478	-	-	-
Overall Height (mm)	1,480	-	-	-
Luggage Capacity VDA (litres) – Seats Up	252	-	-	-
Luggage Capacity VDA (litres) – Seats Down	1,050	-	-	-
WLTP-Low Phase MPG (l/100km)**	44.8 (6.3)	-	-	-
WLTP-Mid Phase MPG (l/100km)**	61.4 (4.6)	-	-	-



All-new i10	1.0 MPI 67PS 5 Speed Manual 2WD	1.0 MPI 67PS 5 Speed Manual AMT 2WD	1.2 MPI 84PS 5 Speed Manual 2WD	1.2 MPI 84PS 5 Speed ATM 2WD
WLTP-High Phase MPG (l/100km)**	65.7 (4.3)	-	-	-
WLTP-Extra High Phase MPG (l/100km)**	52.3 (5.4)	-	-	-
WLTP-Combined MPG (l/100km)**	56.5 (5.0)	-	-	-
WLTP-CO <sub>2</sub> Emissions (g/km) ††	114	-	-	-
SE CONNECT				
Front/Rear Tyre	185/55R15			
Front/Rear Wheel	6.0JX15 Alloy Wheel			
Front/Rear Track	1,467/1,478			
Overall Height (mm)	1,480			
Luggage Capacity VDA (litres) – Seats Up	252			
Luggage Capacity VDA (litres) – Seats Down	1,050			
WLTP-Low Phase MPG (l/100km)**	44.1 (6.4)	42.8 (6.6)	44.1 (6.4)	61.4 (7.0)
WLTP-Mid Phase MPG (l/100km)**	58.9 (4.8)	55.4 (5.1)	55.4 (5.1)	53.3 (5.3)
WLTP-High Phase MPG (l/100km)**	62.8 (4.5)	58.9 (4.8)	60.1 (4.7)	57.6 (4.9)
WLTP-Extra High Phase MPG (l/100km)**	49.6 (5.7)	46.3 (6.1)	47.9 (5.9)	47.1 (6.0)
WLTP-Combined MPG (l/100km)**	54.3 (5.2)	50.4 (5.6)	52.3 (5.4)	49.6 (5.7)
WLTP-CO <sub>2</sub> Emissions (g/km) ††	119	126	124	130
PREMIUM				
Front/Rear Tyre	195/45R16			
Front/Rear Wheel	6.5JX16 Alloy Wheel			
Front/Rear Track	1,467/1,478			
Overall Height (mm)	1,480			

All-new i10	1.0 MPI 67PS 5 Speed Manual 2WD	1.0 MPI 67PS 5 Speed Manual AMT 2WD	1.2 MPI 84PS 5 Speed Manual 2WD	1.2 MPI 84PS 5 Speed ATM 2WD
Luggage Capacity VDA (litres) – Seats Up	252			
Luggage Capacity VDA (litres) – Seats Down	1,050			
WLTP-Low Phase MPG (l/100km)**	44.1 (6.4)	42.8 (6.6)	44.1 (6.4)	39.8 (7.1)
WLTP-Mid Phase MPG (l/100km)**	57.6 (4.9)	55.4 (5.1)	55.4 (5.1)	52.3 (5.4)
WLTP-High Phase MPG (l/100km)**	62.8 (4.5)	58.9 (4.8)	60.1 (4.7)	57.6 (4.9)
WLTP-Extra High Phase MPG (l/100km)**	49.6 (5.7)	46.3 (6.1)	47.9 (5.9)	46.3 (6.1)
WLTP-Combined MPG (l/100km)**	53.3 (5.3)	50.4 (5.6)	51.4 (5.5)	49.6 (5.7)
WLTP-CO <sub>2</sub> Emissions (g/km) ††	120	126	124	130

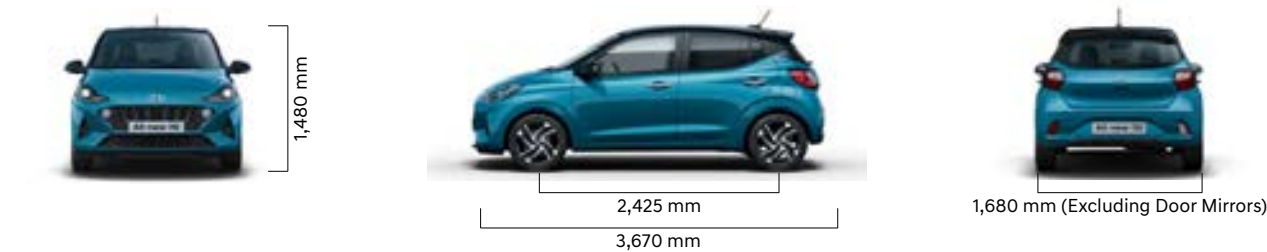
\* Kerb Weight defined as the total weight of a vehicle with standard equipment (the minimum figure and factory fitted optional equipment (the maximum figure) and all necessary operating consumables such as oils, coolant, air conditioning refrigerant and a full tank of fuel, while not loaded with either driver, passengers or cargo.

† Payload is the difference between the Gross Vehicle Weight and the Kerb Weight.

‡ Gross Vehicle Weight is the maximum allowable weight of the vehicle, fully loaded with passengers and cargo (The Payload) and includes the weight of the vehicle.

\*\* Figures shown are for comparability purposes; only compare fuel consumption and CO<sub>2</sub> figures with other cars tested to the same technical procedures. These figures may not reflect real life driving results, which will depend upon a number of factors including accessories fitted (post registration), variations in weather, driving styles and vehicle load.

†† g/km = grams of emitted substance per kilometre travelled. CO<sub>2</sub> = Carbon Dioxide. There is a new test used for fuel consumption and CO<sub>2</sub> figures..







# Hyundai Finance

Hyundai Finance provides a range of products to make the purchase of your Hyundai even more accessible. To meet your requirements, our plans are simple but offer you the same quality and flexibility as your new Hyundai. Applying for a finance plan through your local Hyundai dealer is easy and they will support you in choosing the right plan for your needs.

As a customer your satisfaction is at the heart of our business, and whilst you are able to manage your account online, we are only a phone call away should you require any help or assistance. We offer two main products to assist your car purchase:

## CONDITIONAL SALE

Conditional Sale is a simple and traditional way to finance your car over a fixed period. You decide to fund the entire purchase price or put down a deposit and as your interest rate is fixed you'll pay the same amount each month. After all repayments have been made you'll own the car.

## PERSONAL CONTRACT PURCHASE (PCP)

Personal Contract Purchase could make it easier for you to get behind the wheel of your Hyundai, it may also help you to change your car on a more regular basis.

The way it works is simple — you decide what level of deposit to pay. From nil, up to a maximum of 50%. You also decide your repayment period (typically 25, 37 or 49 months) and set your anticipated annual mileage. This will determine your optional final payment.

You will then make fixed monthly repayments based on the outstanding balance and interest, less your optional final payment, and at the end of your monthly repayment period you will have three choices: return, retain or renew.

RETURN: you can hand the car back to us with nothing further to pay (subject to fair wear and tear, and/or excess mileage charges may apply).

RETAIN: you can pay the optional final payment and the car is yours.

RENEW: you can part exchange the car, using any equity over and above the optional final payment as deposit on your next car (equity is anticipated, but this cannot be guaranteed).



# 5 Year Unlimited Mileage Warranty

At Hyundai we continually invest in the latest manufacturing technology designed to give you years of enjoyable motoring. Our trust in our products is backed up by our comprehensive aftercare package to ensure you have the best possible experience as a Hyundai owner.

Only Hyundai-trained technicians will carry out any warranty work, and we'll also check for any software updates to keep your car running smoothly. You can be sure that we'll only use Hyundai Genuine Parts - tested and approved by us.

## 5 YEAR UNLIMITED MILEAGE WARRANTY

Peace of mind comes as standard with our manufacturer-backed, unlimited mileage, 5 year warranty\* which protects your Hyundai against manufacturing defects and is fully transferable to the next owner.

## HYUNDAI ROADSIDE ASSISTANCE

24 hour roadside assistance should you ever need it, anywhere in the UK or Channel Islands, with Onward Travel included to get you home if your car can't be fixed at the roadside†.

## 5 ANNUAL VEHICLE HEALTH CHECKS

Free, expert visual inspections by your Hyundai dealer on key areas of your car, to help spot any potential problems early.

## ADDITIONAL AFTERCARE

A 12 year anti-perforation warranty against perforation of the bodywork, from the inside of the panel outwards.

\* Vehicles used for taxi, daily rental hire and reward or light commercial vehicles are limited to 100,000 miles. Terms and conditions apply. Visit [hyundai.co.uk/warranty](https://hyundai.co.uk/warranty) for further details.

† Complimentary Hyundai Roadside Assistance automatically covers your Hyundai for 12 months from the date of first registration and can be re-activated annually upon adhering to the recommended service schedule at an Authorised Hyundai Dealer. Visit [hyundai.co.uk/assistance](https://hyundai.co.uk/assistance) for further details.





## Motability Plans

The Motability plan will enable some of you to purchase a Hyundai at a preferential rate. If you receive the Higher Rate Mobility Component of the Disability Living Allowance, you're entitled to access this excellent scheme. In recognition of your requirements, many Hyundai models can be ordered on the 3 year Contract Hire Scheme.

You'll benefit from advantageous features like power steering, height-adjustable driver's seat and automatic gearbox, which all come as standard.

Most of our dealers are Motability Accredited, so just contact them and they'll be happy to help. If you'd like to read about the scheme in more depth, simply visit [www.motability.co.uk](http://www.motability.co.uk)



## Hyundai Service Plans

For the school runs and the shopping trips.  
The multi-storeys and the motorways.  
Holidays, the commute, the appointment you simply can't be late for.  
This is your driving life.

Hyundai Service Plans are a convenient way to plan ahead, with a bespoke plan, tailored for your individual circumstances.  
So you're simply free to live your driving life knowing your servicing costs are already covered.  
With payment options to suit you and no interest or credit checks.  
Just the certainty that your Hyundai is always in great hands.

For more information visit [hyundai.co.uk/owning](http://hyundai.co.uk/owning), contact your local dealer or call us on **0800 981 981**.



## Hyundai Click To Buy™

Hyundai Click To Buy™ is the smarter, easier way to purchase a new car. Innovation has always been part of our DNA, and now we've streamlined the buying process itself. With a few simple clicks you can trade-in your old car, configure your new Hyundai, arrange finance and pay a deposit — all from your computer, tablet or smartphone device.

For added flexibility you can pay in cash, and the delivery arrangements couldn't be simpler. You can choose to get it delivered at your home at a cost, or collect it in the evening or weekend from your local dealer.

You'll be admiring your Hyundai in double-quick time thanks to the latest example of our new-thinking philosophy.

## MyHyundai

MyHyundai is a complimentary and exclusive owners' club with a variety of unique benefits that'll make your ownership experience even more enjoyable.

As well as amazing offers that range from incredible getaways to indulgent gifts, you'll also be able to set your own alerts and preferences, while storing all your car's details in one, easily-accessible place.



## Staying In Touch

We're committed to offering you the very best. That means, as well as delivering impressive cars, we'll also deliver helpful advice and service, every step of the way. Simply contact us on 0800 981 981 or visit our website at [www.hyundai.co.uk](http://www.hyundai.co.uk)



Keep up to date with our news on our Facebook page at [www.facebook.com/hyundaiuk](http://www.facebook.com/hyundaiuk)



See all our latest tweets at [www.twitter.com/hyundai\\_uk](http://www.twitter.com/hyundai_uk)



View our latest videos at [www.youtube.com/user/hyundaimotoruk](http://www.youtube.com/user/hyundaimotoruk)



Specifications shown in this brochure are based upon the latest available information at the time of printing. The colours and finishes reproduced in this brochure are subject to the limitations of the printing process and may vary from the actual colour and paint finish.

In line with our policy of continual product improvement Hyundai Motor UK Ltd reserves the right to make changes at any time, without notice, to prices, colours, material, design, shape, specifications and models, and to discontinue items. For the latest details, please consult your Hyundai dealer.

Your local Hyundai dealer:



This brochure is printed on FSC® (Forestry Stewardship Council) certified paper which has been produced at a mill and printed by a printer that has been certified to the ISO 14001 environmental standard using vegetable oil based inks and aqueous based coatings. It can be disposed of by recycling, incineration for recovery or is biodegradable.

Customer enquiries: 0800 981 981

Model on front cover: All-new i10 Premium in Aqua Turquoise with optional two-tone roof. HB0010 03/20



Hyundai Motor UK Ltd  
728 London Road, High Wycombe, Bucks HP11 1HE  
T: 01494 428600 [www.hyundai.co.uk](http://www.hyundai.co.uk)