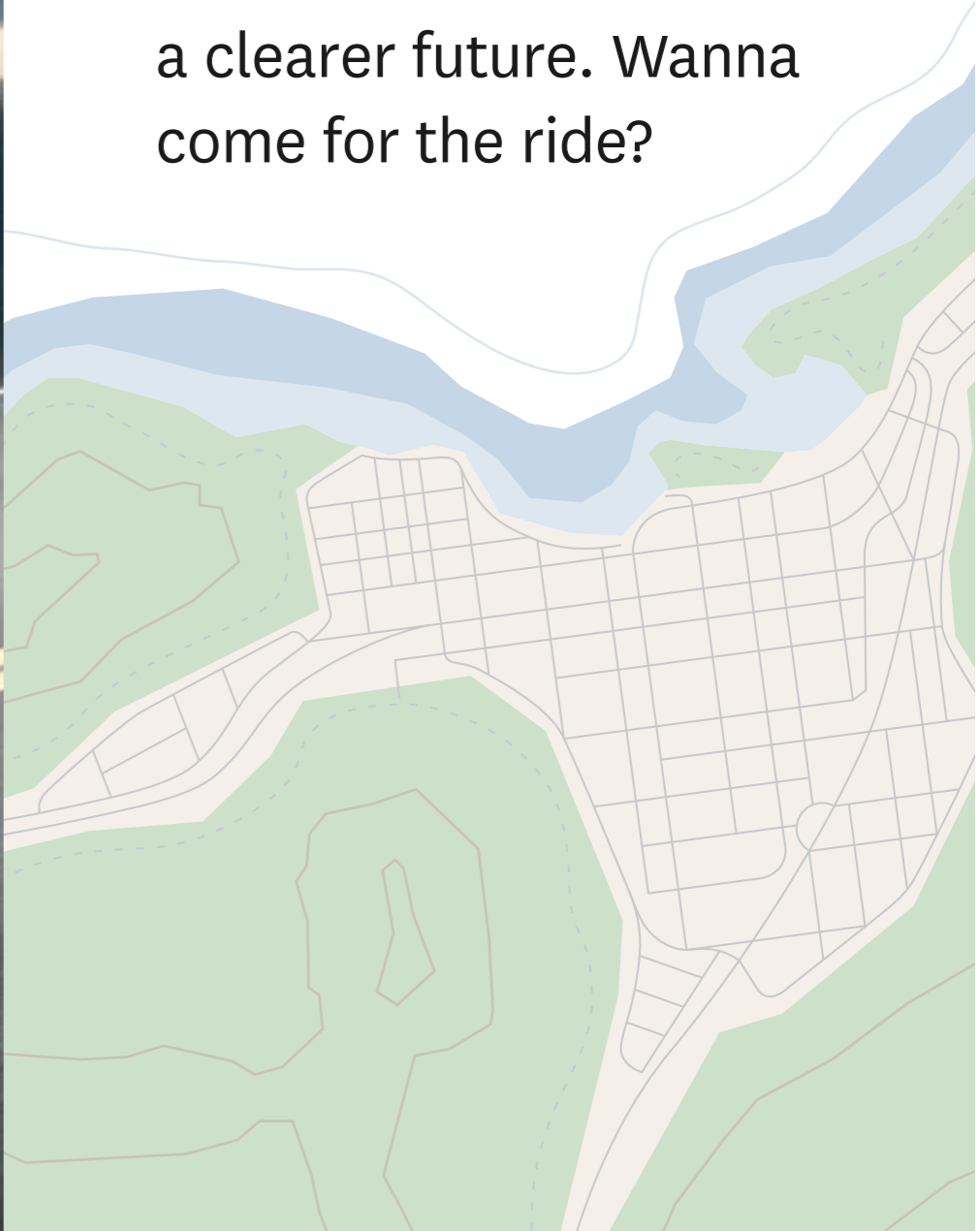


2020
Clarity





It's more than loving nature.
It's about living life.
Today, tomorrow and all
the tomorrows after that.
We're headed towards
a clearer future. Wanna
come for the ride?





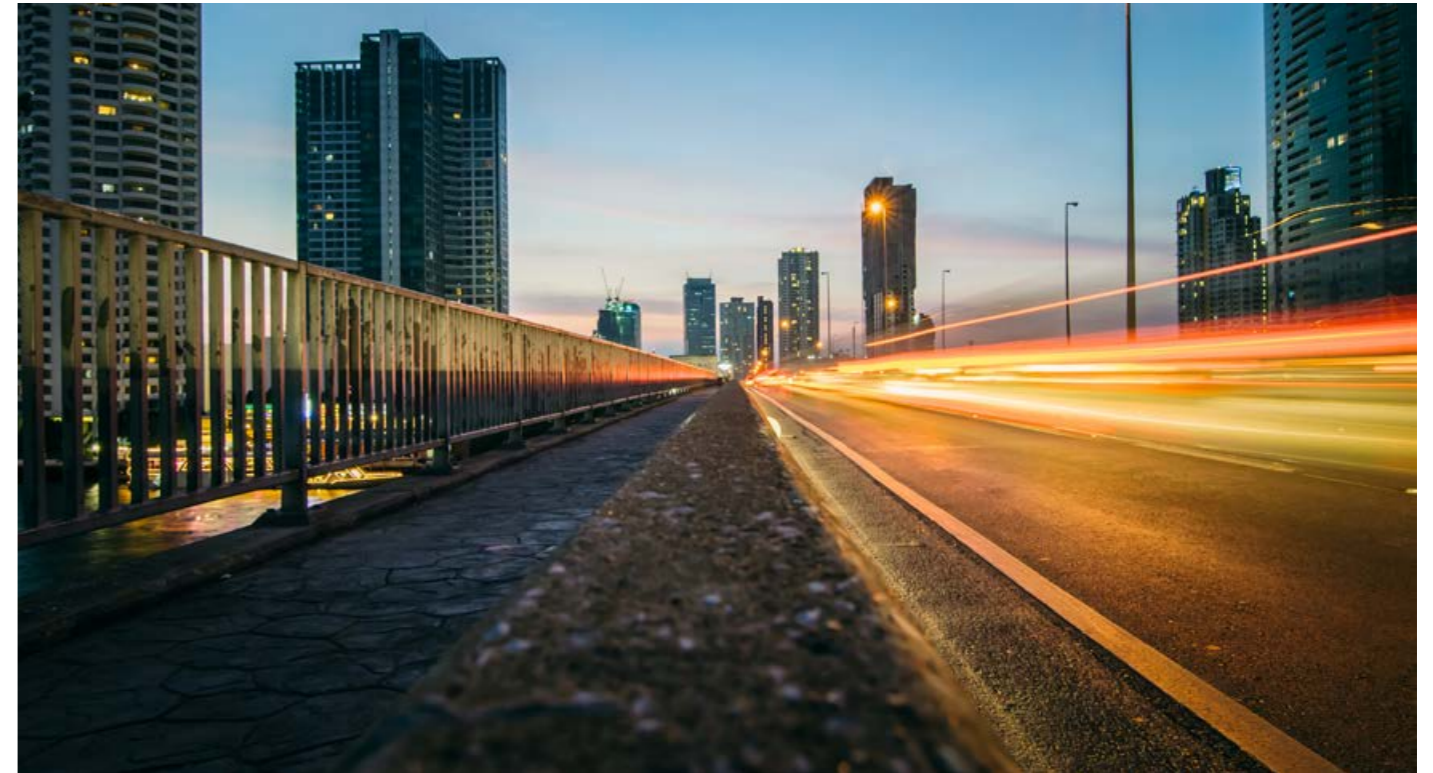
Enjoy a moment of clarity.

So you're ready to play your part for the environment, but you also want to play on the road. The 2020 Clarity lets you have it all. As a Plug-in Hybrid Electric Vehicle (PHEV), the Clarity enjoys both the efficiencies of an electric motor and the agile power of a gas motor. The result? A drive that eases the mind while occasionally melting it around corners. Even comfort comes naturally with a spacious interior that keeps sustainable sourcing in mind. The Clarity Plug-in Hybrid is bound to turn heads and shift perspectives.

Key Features: Honda Sensing™ Technologies, Apple CarPlay™^{1,2}/Android Auto™^{1,2} up to 76 km all-electric range (AER)³ up to 547 km total driving range;⁴ HondaLink™ app^{1,2,5} with remote commands

1. None of the features we describe are intended to replace the driver's responsibility to exercise due care while driving. Drivers should not use handheld devices or operate certain vehicle features unless it is safe and legal to do so. Some features have technological limitations. For additional feature information, limitations and restrictions, please visit www.honda.ca/disclaimers and refer to the vehicle's Owner's Manual.
2. Only compatible with certain devices and operating systems. Operation may be dependent upon: 1. GPS satellite signal reception and available cellular data and/or voice connection; or 2. connection to vehicle's built-in Wi-Fi hotspot, if applicable. Associated charges (incl. data plans, roaming charges or other amounts charged by your wireless carrier) may apply.
3. Estimated all-electric range (AER) based on Government of Canada's 5-cycle testing method when fully charged. Your actual range will vary based on your driving habits and conditions, charging practice, vehicle and battery pack age/conditions, and other factors - use for comparison only. For more information on 5-cycle testing, visit <http://vehicles.nrcan.gc.ca>.
4. Estimated total electric/gasoline driving range based on Government of Canada's 5-cycle testing method when fully charged and with a full tank of gas. Your actual range will vary based on your driving habits and conditions, charging practice, vehicle and battery pack age/conditions, and other factors - use for comparison only. For more information on 5-cycle testing, visit <http://vehicles.nrcan.gc.ca>.
5. Subscription to HondaLink™ services is required. HondaLink™-equipped vehicles come with complimentary time-limited trial subscriptions; fees, taxes and other charges will apply in order to continue subscription services upon trial expiry. The availability of certain GPS satellite and/or cellular networks is required for HondaLink™ to operate properly. Service interruptions may occur and/or vehicle system upgrades may be required if cellular network availability is compromised. Some restrictions may apply. For additional HondaLink™ information, please visit www.honda.ca/hondalink and www.honda.ca/privacy.





Plug in. Stand out.

Designed for fuel conservation, the Clarity looks anything but conservative. In fact, a bold, inspired aerodynamic body helps improve efficiencies. Like the airflow-enhancing rear air curtain ducts. Or the full LED headlights and LED taillights designed to bring a clear vision to the road and your followers. Even the 18" hybrid-aerodynamic aluminum-alloy wheels feature an aerodynamic design that helps optimize fuel consumption. The 2020 Clarity looks towards the future, and looks good doing it.

Key Features: 18" hybrid-aerodynamic aluminum-alloy wheels, LED headlights with auto-on/off, smart wiper system



Hybrid and luxury, in the same sentence?

In the pursuit of change, some things are best left as you want them. Like interior comfort. Inside the Clarity, the advanced, spacious cabin comes with ample breathing room – even with five seats. And you'll breathe easy knowing the premium interior materials are used with sustainable sourcing in mind. With the battery conveniently located under the 60/40 split fold-down seats, the Clarity boasts a full size trunk – and a cargo-carrying capacity of 439 litres. With that boosted space and a T-shaped centre console to boot, the Clarity has the kind of hybrid utility that's equal parts luxurious and user-friendly.

Key Features: 5 passenger seating, 60/40 split fold-down rear seatback with centre armrest, heated front seats, USB audio interface¹, available leather-trimmed seating surfaces



¹ Only compatible with certain devices and operating systems. Operation may be dependent upon: 1. GPS satellite signal reception and available cellular data and/or voice connection; or 2. connection to vehicle's built-in Wi-Fi hotspot, if applicable. Associated charges (incl. data plans, roaming charges or other amounts charged by your wireless carrier) may apply.



Low-impact drive. High-impact fun.

EFFICIENCY

Driving range.

The Clarity has an all-electric, zero-emission range (AER) of up to 76 km². For longer trips, the 1.5-litre Atkinson cycle 4-cylinder gasoline engine is designed to work with the electric motor, enabling a combined electric/hybrid driving range of approximately 547 km³.

Fuel consumption.

The Clarity is a hyper-efficient car rated at an impressive combined city/highway fuel consumption of 2.1 L/100 km⁴. The combined city/highway fuel consumption for the 1.5-litre Atkinson cycle gasoline engine is rated at an impressive 5.6L/100 km⁵.

Easily rechargeable.

When plugged into a standard household outlet with the included charging cable, the battery in the Clarity can be charged in as little as 12 hours⁶. The Clarity can be charged in as little as 2.5 hours when plugged into a level 2 charging station (240V).

Eco Drive display.

The Eco Drive display helps you improve your driving efficiency with a simple-to-follow visual display of the Clarity's real-time performance.

Eco Assist™ system.

With the Econ mode activated, the Clarity helps improve efficiency by adjusting the climate control system and accelerator pedal. Colour-coded bars on the dash provide feedback on your driving style, giving you even more control over efficiency.

PERFORMANCE

Plug-in hybrid powertrain.

As a plug-in hybrid electric vehicle (PHEV) with a full-parallel hybrid powertrain, the Clarity can run on a gasoline internal combustion engine, an electric motor, or both.

Hyper-efficient. Super powerful.

Driving performance is enhanced with a hyper-efficient 1.5-litre Atkinson cycle 4-cylinder engine along with an electric motor that produces 181-horsepower and 232 lb.-ft. of torque, for a combined total of 212 horsepower¹.

Deceleration paddle selectors.

Paddle selectors on the steering wheel let you control the rate of deceleration by simulating engine braking, helping to recharge the battery through regenerative braking.

Selectable driving modes.

Three driving modes – Normal, Econ, and Sport – allow you to customize your driving experience, increasing efficiency or driving performance. In addition, Hybrid (HV) mode can be selected in conjunction with each mode in order to help maintain the battery's state of charge.

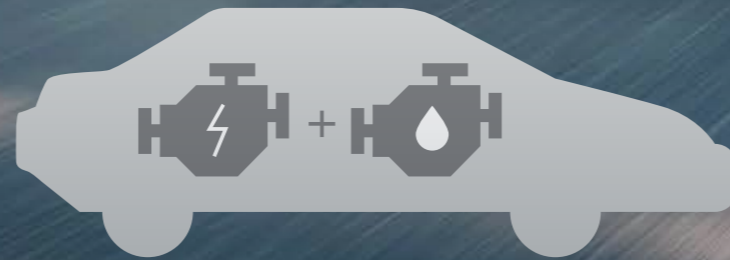
1. Horsepower and torque calculations reflect SAE net, Rev. 08/04, SAE J1349 procedures.
2. Estimated all-electric range (AER) based on Government of Canada's 5-cycle testing method when fully charged. Your actual range will vary based on your driving habits and conditions, charging practice, vehicle and battery pack age/conditions, and other factors – use for comparison only. For more information on 5-cycle testing, visit <http://vehicles.nrcan.gc.ca>.
3. Estimated total electric/gasoline driving range based on Government of Canada's 5-cycle testing method when fully charged and with a full tank of gas. Your actual range will vary based on your driving habits and conditions, charging practice, vehicle and battery pack age/conditions, and other factors – use for comparison only. For more information on 5-cycle testing, visit <http://vehicles.nrcan.gc.ca>.
4. Estimated City/Hwy/Combined fuel consumption for blended electric and gasoline operation based on Government of Canada's 5-cycle testing method. Your actual fuel consumption will vary based on your driving habits and conditions, charging practice, vehicle and battery pack age/conditions, and other factors – use for comparison only.
5. Estimated City/Hwy/Combined fuel consumption for gasoline-only operation based on Government of Canada's 5-cycle testing method. Your actual fuel consumption will vary based on driving habits and other factors – use for comparison only. For more information on 5-cycle testing, visit <http://vehicles.nrcan.gc.ca>.
6. Estimated charge time is approximate and may vary with ambient temperatures and battery pack age/condition. Always charge in accordance with the Owner's Manual.

How Plug-in Hybrid Electric Vehicle technology works.



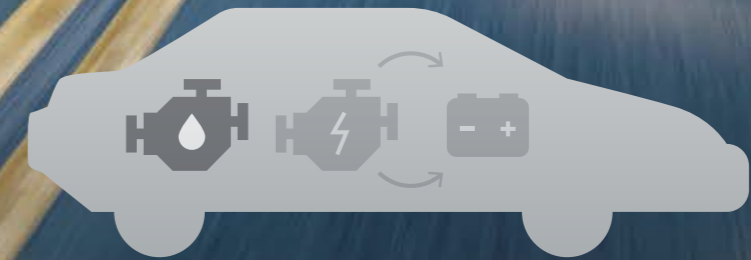
Electric (EV) Mode

At low speeds or when stopped, the Clarity relies only on the electric motor for power.



Hybrid (HV) Mode

Motive power comes from the electric traction motor. The coupled gasoline engine and generator motor produce electricity, which is sent directly to the traction motor or to the battery pack, depending on the driving situation.



Engine (Direct Drive) Mode

In higher-speed, low-load conditions, only the gasoline engine provides propulsion while the electric motor begins to recharge the High Voltage battery through regenerative braking.

Ecology and technology. Together at last.

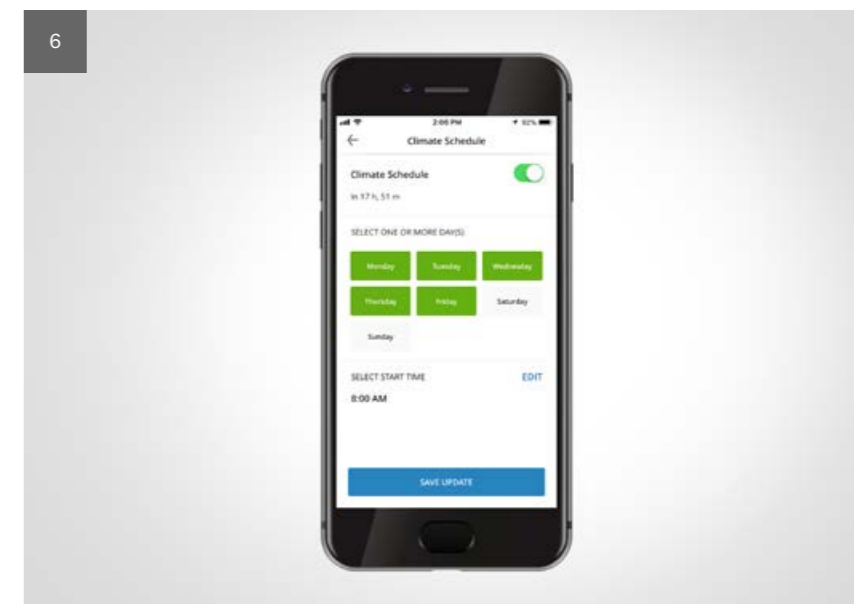
We're taking the futuristic route as we strive towards a sustainable future. Your progressive drive starts with a glance behind using the multi-angle rearview camera¹ with dynamic guidelines. When you're ready to hit the road, it's time to hit play. To the right of the pushbutton start, you'll find the 8" Display Audio System¹ with Apple CarPlay™^{1,2} and Android Auto™^{1,2} compatibility. The 180-watt audio system featuring 8 speakers is primed to do your playlist justice.

Wherever you're headed, the Clarity will help you get there using the available Honda Satellite-Linked Navigation System™^{1,3}. As you follow nature's twists and turns, the Honda LaneWatch™ blind spot display¹ will help keep you on track. And the HondaLink™ app^{1,2,5} remote climate pre-conditioning⁶ will definitely come in handy between drives, warming or cooling the interior while already plugged in. From the inside and out, the Clarity has sense-tingling tech that's a sign of the future. And a better one at that.

Key Features: 8" Display Audio System¹; 180-watt AM/FM audio system with 8 speakers, HandsFreeLink™-bilingual Bluetooth® wireless mobile phone interface^{1,2} with steering wheel-mounted controls, SMS text message^{1,2}/E-mail function^{1,2} available SiriusXM™^{1,4}

1. None of the features we describe are intended to replace the driver's responsibility to exercise due care while driving. Drivers should not use handheld devices or operate certain vehicle features unless it is safe and legal to do so. Some features have technological limitations. For additional feature information, limitations and restrictions, please visit www.honda.ca/disclaimers and refer to the vehicle's Owner's Manual.
 2. Only compatible with certain devices and operating systems. Operation may be dependent upon: 1. GPS satellite signal reception and available cellular data and/or voice connection; or 2. connection to vehicle's built-in Wi-Fi hotspot, if applicable. Associated charges (incl. data plans, roaming charges or other amounts charged by your wireless carrier) may apply.
 3. Map database covers major metropolitan areas in Canada and the 48 contiguous U.S. states.
 4. Only available in certain areas. Includes a no-charge trial of three months.
 5. Subscription to HondaLink™ services is required. HondaLink™-equipped vehicles come with complimentary time-limited trial subscriptions; fees, taxes and other charges will apply in order to continue subscription services upon trial expiry. The availability of certain GPS satellite and/or cellular networks is required for HondaLink™ to operate properly. Service interruptions may occur and/or vehicle system upgrades may be required if cellular network availability is compromised. Some restrictions may apply. For additional HondaLink™ information, please visit www.honda.ca/hondalink and www.honda.ca/privacy.
 6. Preconditioning will not operate if the battery level is low. Honda recommends using a Level 2 (240V) charger if preconditioning while the vehicle is plugged in.

1. Apple CarPlay™^{1,2}/
Android Auto™^{1,2}
2. Honda LaneWatch™
blind spot display¹
3. Multi-angle rearview camera¹
with dynamic guidelines
4. Available Honda Satellite-
Linked Navigation System™^{1,3}
and bilingual Voice Recognition
5. Vehicle Energy Screen
6. Remote climate
pre-conditioning⁶
(HondaLink™ app^{1,2,5})





Your safety ecosystem.

The Honda Sensing™ technologies are designed to help make your drive safer. With intuitive technology and design, we've created a way forward that we can all feel good about. Whether you're driving or sitting in the passenger seat, feel confident in the latest in safety innovation from Honda.

BRAKE

Forward Collision Warning (FCW) system

The FCW system¹ is integrated with CMBS[®] and designed to detect the presence of vehicles in front of you, issuing alerts if you're approaching with too much speed. If you fail to respond to the alerts, CMBS[®] is triggered into operation.



Collision Mitigation Braking System™ (CMBS[®])

To help reduce the likelihood or severity of a frontal impact, the CMBS^{®1} is engineered to apply brake pressure if you don't slow down when it detects you're at risk of a collision. If it still senses an imminent collision, CMBS[®] is designed to brake firmly.



Lane Departure Warning (LDW) system

The LDW system¹ is designed to monitor vehicle lane position and alert you if your vehicle drifts into a new lane when you haven't signaled.



Road Departure Mitigation (RDM) system

The RDM system¹ is designed to help steer and even apply the brakes to help keep the vehicle from leaving the road.



Lane Keeping Assist System (LKAS)

The LKAS¹ is engineered to gently correct your steering if you begin to leave a detected lane without signaling, applying torque progressively to the steering to help guide you back to the centre of the lane.



Adaptive Cruise Control (ACC) with Low-Speed Follow (LSF)

The ACC system¹ with Low-Speed Follow is designed to keep a set speed and set following interval behind the vehicle detected in front of you, including the ability to start and stop the vehicle with the flow of traffic.

1. None of the features we describe are intended to replace the driver's responsibility to exercise due care while driving. Drivers should not use handheld devices or operate certain vehicle features unless it is safe and legal to do so. Some features have technological limitations. For additional feature information, limitations and restrictions, please visit www.honda.ca/disclaimers and refer to the vehicle's Owner's Manual.



Stay in touch with nature. And your car.

With a free subscription to HondaLink™^{1,2} you'll stay connected to your Clarity – any time and any place.

HondaLink™^{1,2,3} Subscription Services



Charge Schedule

Set a recurring time each day to start charging your vehicle. You can also remotely stop and start charge at any time.



Dashboard

Check the battery level, driving range and fuel level right from your app.



Remote Climate Pre-Conditioning⁴

Get comfortable by cooling down or warming up your vehicle ahead of time.



Find Charging Stations

Use the app to search for nearby charging stations and their status.



Send Destination⁵

Search and send a location from your app to your vehicle's navigation system.

Advanced Connectivity



Find My Car

Never forget where you parked by getting your vehicle location right in the app.



Vehicle Notifications

Receive information about warning lamps or maintenance reminders for your vehicle.



Stay Connected

To learn more about the many HondaLink™ features not listed here, visit [honda.ca/hondalink](https://www.honda.ca/hondalink).

1. None of the features we describe are intended to replace the driver's responsibility to exercise due care while driving. Drivers should not use handheld devices or operate certain vehicle features unless it is safe and legal to do so. Some features have technological limitations. For additional feature information, limitations and restrictions, please visit www.honda.ca/disclaimers and refer to the vehicle's Owner's Manual.
2. Only compatible with certain devices and operating systems. Operation may be dependent upon:
1. GPS satellite signal reception and available cellular data and/or voice connection;
or 2. connection to vehicle's built-in Wi-Fi hotspot, if applicable. Associated charges (incl. data plans, roaming charges or other amounts charged by your wireless carrier) may apply.
3. The availability of certain GPS satellite and/or cellular networks is required for HondaLink™ to operate properly. Service interruptions may occur and/or vehicle system upgrades may be required if cellular network availability is compromised. Some restrictions may apply. For additional HondaLink™ information, please visit www.honda.ca/hondalink and www.honda.ca/privacy.
4. Preconditioning will not operate if the battery level is low. Honda recommends using a Level 2 (240V) charger if preconditioning while the vehicle is plugged in.
5. Touring model only.

Solid on safety.

At Honda, we strive to provide a high level of standard safety features to help ensure the safety of occupants, other drivers and even pedestrians. This added peace of mind helps our drivers maintain the confidence to enjoy every road to the fullest.

PASSIVE SAFETY

Advanced Compatibility Engineering™ (ACE™) body structure

The highly innovative, next-generation Advanced Compatibility Engineering™ (ACE™) body structure is engineered to help disperse frontal impact energy to enhance occupant protection, while more effectively controlling it in a severe collision to help prevent intrusion into the passenger cabin.

Seat belt safety

The Clarity helps prepare you for the unexpected with 3-point height-adjustable front seat belts with automatic tensioning system and 3-point rear seat belts.

HondaLink™ Assist Automatic Emergency Response System

The HondaLink Assist Automatic Emergency Response System^{1,2,3} helps you get the help you need when you need it most. If the airbags deploy, your Display Audio System¹ is designed to automatically attempt to put you on a call with an operator who will forward your location to first responders if needed. It works with any compatible Bluetooth®-paired phone as long as it has reception, does not require a subscription and gives you added peace of mind while you're on the road.

Pedestrian safety

Innovative pedestrian safety features include an energy-absorbing hood and front fenders and deformable wiper pivots.

Child safety

The Clarity features childproof rear door locks, as well as rear seat Lower Anchors and Tethers for Children (LATCH), which give you a simple and convenient method to install compatible child safety seats without using the vehicle's seat belt system.

Seven standard airbags

The cabin of the Clarity contains seven standard airbags. It features advanced front airbags, driver knee airbag, as well side curtain airbags designed to deploy in the event of a rollover. Plus, it has SmartVent™ side airbags, which are designed to deploy in a manner that mitigates the risk of injury to out-of-position or smaller occupants.



ACTIVE SAFETY

Controlled Braking

To assist with safe stopping, the 4-wheel Anti-lock Braking System¹ (ABS) is designed to help you maintain control under hard braking conditions, while Electronic Brake-force Distribution (EBD) helps to optimize braking power based on weight distribution inside the vehicle. In addition, Brake Assist is engineered to help improve braking performance by applying brake pressure when a panic stop is detected.

Vehicle Stability Assist (VSA®) with Traction Control

Vehicle Stability Assist¹ with Traction Control is designed to sense and help correct oversteer and understeer scenarios to enhance handling and cornering stability, while Traction Control is designed to minimize wheel spin when accelerating on loose or slippery surfaces, helping to inspire greater driver confidence.

Hill Start Assist¹

When you take your foot off the brake, this feature is engineered to temporarily maintain brake pressure to help prevent your Clarity from starting to roll backwards when stopped on an incline.

1. None of the features we describe are intended to replace the driver's responsibility to exercise due care while driving. Drivers should not use handheld devices or operate certain vehicle features unless it is safe and legal to do so. Some features have technological limitations. For additional feature information, limitations and restrictions, please visit www.honda.ca/disclosures and refer to the vehicle's Owner's Manual.

2. Only compatible with certain devices and operating systems. Operation may be dependent upon: 1. GPS satellite signal reception and available cellular data and/or voice connection; or 2. connection to vehicle's built-in Wi-Fi hotspot, if applicable. Associated charges (incl. data plans, roaming charges or other amounts charged by your wireless carrier) may apply.

3. Operation requires wireless mobile phone to be paired with the vehicle. Operation is dependent upon cellular data and/or voice connection availability and GPS satellite signal reception.

Clarity Colours

EXTERIOR COLOURS



Modern Steel Metallic



Platinum White Pearl



Crimson Pearl

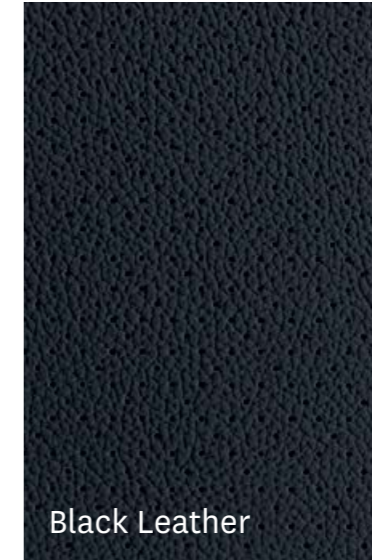


Moonlit Forest Pearl

INTERIOR COLOURS



Black Combi
(Bio Fabric/Leather)



Black Leather



Beige Leather

COLOUR	PLUG-IN	TOURING
Modern Steel Metallic	Black Combi (Bio Fabric/Leather)	Black Leather
Platinum White Pearl	Black Combi (Bio Fabric/Leather)	Black Leather
Crimson Pearl		Beige Leather
Moonlit Forest Pearl		Beige Leather

Clarity Trims

PLUG-IN

KEY FEATURES

- 1.5-litre, 16-valve, Atkinson cycle DOHC, 4-cylinder engine with 181 hp electric motor horsepower¹ and 212 hp combined total horsepower¹
- 18" hybrid-aerodynamic aluminum-alloy wheels
- 180-watt AM/FM audio system with MP3/Windows Media[®] Audio playback capability and 8 speakers
- 60/40 split fold-down rear seatback with centre armrest
- 8" Display Audio System² with HondaLink™^{2,4}
- Apple CarPlay™^{2,4} / Android Auto™^{2,4}
- E-Continuously Variable Transmission (E-CVT)
- Eco Assist™ system
- Heated front seats
- Honda LaneWatch™ blind spot display²
- HondaLink™^{2,4,8} app with remote commands
- HV charge mode button
- Advanced front airbag system
- LED brake lights, daytime running lights and taillights
- LED front turn signal indicators
- LED headlights with auto-on/off (High and low beam)
- Proximity key entry system with pushbutton start
- Smart wiper system
- Steering wheel-mounted controls (cruise control, audio, telephone, Driver Information Interface)
- Steering wheel-mounted deceleration paddle selectors
- Three-mode drive system (Sport, Normal, Econ)
- Tire Pressure Monitoring System (TPMS)³ – indirect
- Up to 76 km¹³ All-Electric Range (AER)
- Up to 547 km¹⁴ Overall range

FUEL ECONOMY

- 2.1 L/100 km¹² Combined (electric/gasoline)
- 5.3/5.9/5.6 L/100 km¹¹ Gasoline only (City/Hwy/Combined)

TOURING

ADDS TO OR REPLACES PLUG-IN FEATURES:

- 8" Display Audio System² with Honda Satellite-Linked Navigation System™^{2,6} with bilingual Voice Recognition
- HomeLink[®] remote system⁷
- Leather-trimmed seating surfaces
- Leather-wrapped steering wheel
- SiriusXM™^{2,10}

HONDA SENSING™ TECHNOLOGIES

STANDARD ON ALL TRIMS

- Forward Collision Warning (FCW) system²
- Collision Mitigation Braking System™² (CMBS[®])
- Lane Departure Warning (LDW) system²
- Lane Keeping Assist System (LKAS)²
- Road Departure Mitigation (RDM) system²
- Adaptive Cruise Control (ACC)² with Low-Speed Follow



1. Horsepower and torque calculations reflect SAE net, Rev. 08/04, SAE J1349 procedures.

2. None of the features we describe are intended to replace the driver's responsibility to exercise due care while driving. Drivers should not use handheld devices or operate certain vehicle features unless it is safe and legal to do so. Some features have technological limitations. For additional feature information, limitations and restrictions, please visit www.honda.ca/disclaimers and refer to the vehicle's Owner's Manual.

3. For optimal tire wear and performance, the pressure should be checked regularly with a tire gauge. Do not rely solely on the monitor system.

4. Only compatible with certain devices and operating systems. Operation may be dependent upon: 1. GPS satellite signal reception and available cellular data and/or voice connection; or 2. connection to vehicle's built-in Wi-Fi hotspot, if applicable. Associated charges (incl. data plans, roaming charges or other amounts charged by your wireless carrier) may apply.

5. Operation requires wireless mobile phone to be paired with the vehicle. Operation is dependent upon cellular data and/or voice connection availability and GPS satellite signal reception.

6. Map database covers major metropolitan areas in Canada and the 48 contiguous U.S. states.

7. HomeLink™ can be programmed with codes of up to three remote-control devices (e.g., garage-door opener, home security system, etc.).

8. The availability of certain GPS satellite and/or cellular networks is required for HondaLink™ to operate properly. Service interruptions may occur and/or vehicle system upgrades may be required if cellular network availability is compromised. Some restrictions may apply. For additional HondaLink™ information, please visit www.honda.ca/hondalink and www.honda.ca/privacy.

9. Coverage varies by market.

10. Only available in certain areas. Includes a no-charge trial of three months.

11. Estimated City/Hwy/Combined fuel consumption for gasoline-only operation based on Government of Canada's 5-cycle testing method. Your actual fuel consumption will vary based on driving habits and other factors – use for comparison only. For more information on 5-cycle testing, visit <http://vehicles.nrcan.gc.ca>.

12. Estimated City/Hwy/Combined fuel consumption for blended electric and gasoline operation based on Government of Canada's 5-cycle testing method. Your actual fuel consumption will vary based on your driving habits and conditions, charging practice, vehicle and battery pack age/conditions, and other factors – use for comparison only. For more information on 5-cycle testing, visit <http://vehicles.nrcan.gc.ca>.

13. Estimated all-electric range (AER) based on Government of Canada's 5-cycle testing method when fully charged. Your actual range will vary based on your driving habits and conditions, charging practice, vehicle and battery pack age/conditions, and other factors – use for comparison only. For more information on 5-cycle testing, visit <http://vehicles.nrcan.gc.ca>.

14. Estimated total electric/gasoline driving range based on Government of Canada's 5-cycle testing method when fully charged and with a full tank of gas. Your actual range will vary based on your driving habits and conditions, charging practice, vehicle and battery pack age/conditions, and other factors – use for comparison only. For more information on 5-cycle testing, visit <http://vehicles.nrcan.gc.ca>.

We're Here. At Honda, assistance and support are always available. The team of trained technicians at your Honda dealership will help keep your vehicle in terrific shape. If you need more information or assistance relating to your warranty, call us at 1-888-9-HONDA-9. For all of the latest Honda information, including product specifications, pricing, photos and more, visit honda.ca. It has everything you need to “design” your Honda and personalize it with items from a list of quality accessories.

We're Ready to Help. When you purchase a new Honda, you automatically receive Honda Plus Roadside Assistance. This service is available to you, or any authorized driver, 24 hours a day, 7 days a week, anywhere in Canada or the United States (including the lower 48 states, the District of Columbia, Alaska, Hawaii, and Puerto Rico). Coverage is for 3 years over an unlimited distance and includes a 24-hour toll-free Honda Plus Roadside Assistance number, mechanical breakdown towing, emergency roadside service and many other helpful features. Ask your dealer for more information.

Honda Plus Extended Warranty. Experience added protection with Honda Plus coverage that is behind you for the road ahead. With available coverage options of up to 8 years/200,000 km, you can choose the one that best suits your needs. With a plan this wide-ranging, the only thing that's uncertain is where it will take you.

Honda Financial Services. Whether you buy or lease a Honda, Honda Financial Services can assist you with the process. Ask your dealer which lease or purchase plan best suits your needs.

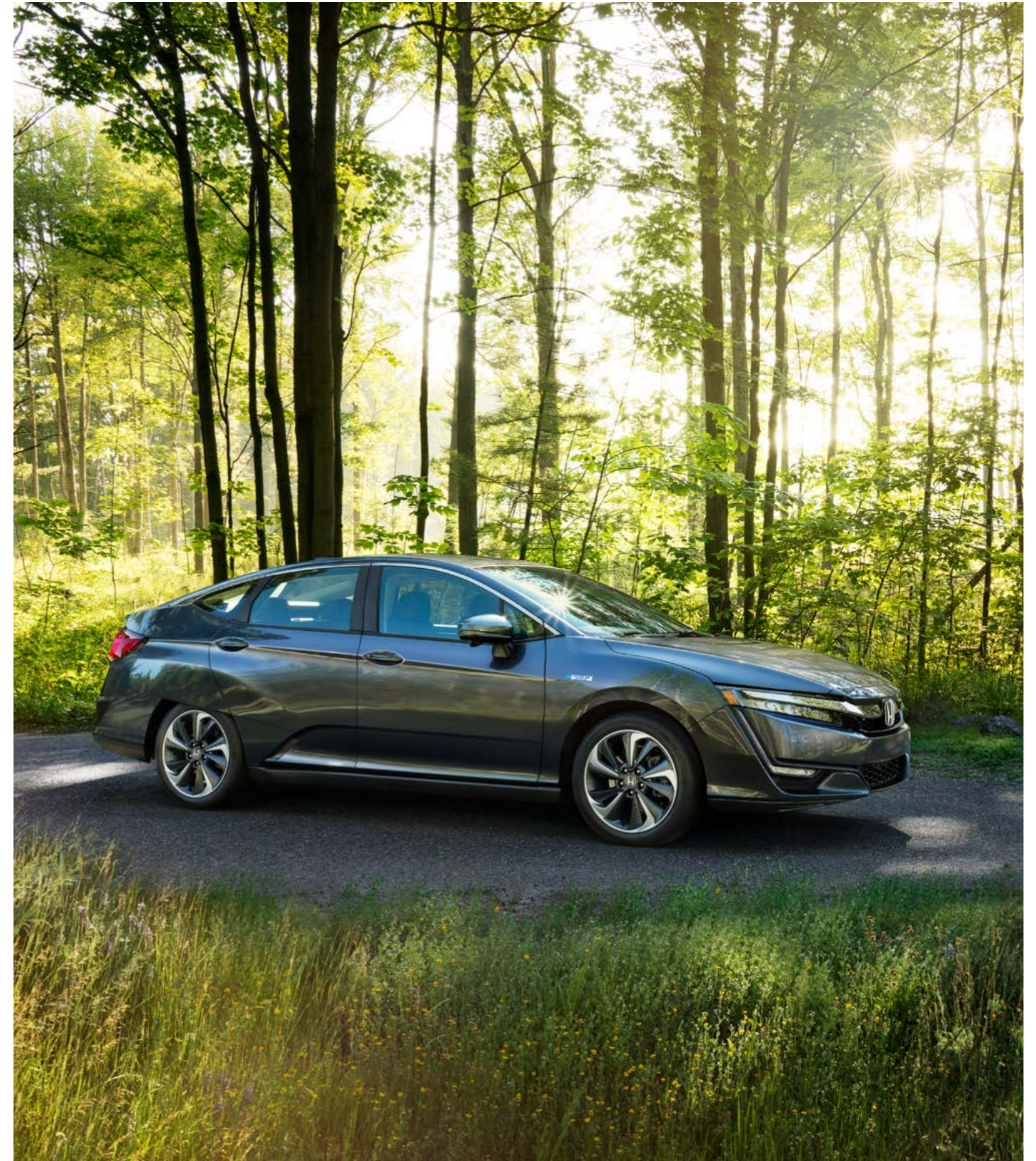
New Honda Vehicle Warranty. The Honda warranty protection makes Power Train components a minor concern with the Honda 5-year/100,000-km No Nonsense Warranty. In addition to the Honda 5-year/100,000-km No Nonsense Warranty, you and your new Honda are protected by a Honda 3-year/60,000-km Distributor's Warranty as well as an additional series of warranties for such items as emission controls, body corrosion and more.

Genuine Honda Accessories give you the opportunity to fine-tune your new Honda just how you like it. Whether you want to turn up the style, the versatility or the exclusivity, every accessory is designed and built to adhere to the strictest Honda standards. See your dealer for full details.

Genuine Honda Replacement Parts are made to the same exacting standards as original Honda components and are guaranteed by the Genuine Honda Parts Warranty. Using Genuine Honda Parts will help to maintain the quality, reliability and performance of your vehicle.

Always use seat belts and appropriate child seats. Children 12 and under are safest when properly restrained in a rear seat. Properly secure all items stored in cargo areas. Always read the vehicle owner's manual for detailed vehicle operation and feature information.

Honda reserves the right to terminate or change any of the services and/or features listed in this brochure at any time, for any reason. Some features require registration. Certain features may transmit to Honda and/or other service providers a vehicle's location, operating conditions or other information that may be tied to the vehicle identification number (VIN) and can be combined to track a vehicle. For Honda's data use and Privacy Policies, see www.honda.ca/privacy. Specifications, features, illustrations and equipment shown in this brochure are based upon the latest available information at the time of publication. Although descriptions are believed to be correct, accuracy cannot be guaranteed. Honda reserves the right to make changes at any time, without notice or obligation, in colours, specifications, accessories, materials, models and trim availability. Some vehicles may be shown with optional equipment. Some vehicles shown may be U.S. models. Canadian specifications may vary. For Android Auto™ data use and privacy policy, see Terms and Privacy Policy for Android Auto™ app or contact Google Inc. at www.google.com. Android Auto is a trademark of Google Inc. For Apple CarPlay™ data use and privacy policy, see Terms and Privacy Policy for Apple CarPlay™ or contact Apple Inc. at www.apple.com. Apple CarPlay, Siri and iPhone are trademarks of Apple Inc., registered in the U.S. and other countries. Bluetooth is a registered trademark of SIG Inc. Blu-ray is a trademark of Blu-ray Disc Association. HomeLink and HandsFreeLink are registered trademarks or trademarks of Johnson Controls Technology. HD Radio™ is a proprietary trademark of iBiquity Digital Corp. HDMI is a registered trademark of HDMI Licensing LLC. Windows Media is a registered trademark of Microsoft Corporation. LEED® is a registered trademark of the U.S. Green Building Council, licensed to the Canada Green Building Council for use in Canada. © 2019 Sirius XM Canada Inc. "SiriusXM", the SiriusXM logo, channel names and logos are trademarks of SiriusXM Radio Inc. and are used under licence. Honda and all other marks used herein are trademarks or registered trademarks of Honda Motor Co., Ltd. Honda Canada Inc., 180 Honda Boulevard, Markham, ON, Canada L6C 0H9. 1-888-9-HONDA-9. www.honda.ca.





HondaJet



Motorcycles



Side By Side



ASIMO



Honda Campus



Marine



Power Equipment



ATVs



Blue Skies for Our Children

Here's to the dreamers.

The Power of Dreams

At Honda, The Power of Dreams drives us to create intelligent products that enhance mobility and increase the joy in people's lives. It is the mindset that guides us to help move people forward and protect the future we all share.

How do we do it? We never stop dreaming. In the 70s, we were the first automaker in the industry to voluntarily adhere to emissions standards. Now, we're advancing robotics and aviation, harnessing solar power and releasing a car that emits only water.

Through it all, our goal never changes: create a safer, smarter world in which people experience the joy of mobility.

The Honda Canada Foundation

The Honda Canada Foundation enables the realization of dreams by supporting people and organizations across the country that focus on four pillars: Family, Education, Environment and Engineering. Since 2005, more than 5.5 million Canadians have benefited from charitable programs funded by the Honda Canada Foundation.

Blue Skies for Our Children

We believe everything we do must exist in harmony with nature. That's where "Blue Skies for Our Children" was born. It's more than a mantra – it's an environmental pledge to the Earth and our future generations. And we're practicing what we preach.

Leading the LEED® certifications

Our sales offices also strive for environmental efficiencies. Honda's LEED® (Leadership in Energy and Environmental Design) Gold Certified Head Office campus in Markham, Ontario, includes green features such as a storm water management system, heat-reflective materials on the roof and bio swales for natural filtration. The facility uses 89 percent less litres of water per square foot and 38 percent less kilowatt hours of energy annually than the average office facility.

Zero Waste-to-Landfill

We don't waste time. Or anything else for that matter. Our goal is to increase our recycling efforts, reduce overall waste and divert materials from landfill sites. In fact, last year we sent less than one percent of waste to landfills from our office and parts distribution facilities combined.

One Honda. One Tree.

We're pretty obsessed with fresh air. For every lawn and garden or ATV product sold between April 1 and July 31 annually, the Honda Canada Foundation plants one tree. In the last 12 years, we've helped plant more than 160,000 trees in Canada.

Environmental Vehicles & Technology

Blending style, efficiency and a serious amount of thrill, the Accord Hybrid makes environmental responsibility feel almost rebellious. Combining a lithium-ion battery with a 2.0-litre engine, this Hybrid lets you go more and stop less on the way. The Honda Insight exemplifies hybrid efficiency, powered by a 1.5-litre Atkinson Cycle engine, electric motor and lithium-ion battery. And the future looks brighter with Honda advancing Fuel Cell technology that emits zero emissions.

Honda Clarity Plug-in Hybrid

Whoever said an eco-conscience came with compromise was sorely mistaken. This advanced plug-in hybrid vehicle lets you tap into electric power alongside the gas engine to create extra efficiency.





Clarity Plug-in Hybrid



Accord Hybrid



Insight Hybrid

A cleaner today for a better tomorrow.

Everything we do – from the way we act, think and innovate – is rooted in creating a better future for the earth and its citizens. Protecting the environment is not some lofty mission statement. It’s a promise. It’s why we continually evolve our advanced line-up to include efficient hybrid technology and electrified vehicles. This commitment even lives through our communications, like this online-only brochure, as we strive to lower our overall eco-footprint.