

Attractive Glory · Exciting Driving

Super City SUV · Glory 580



Super Warranty of 7 years / 150,000 km



CVT (with manual mode)

Appealing and Dynamic Appearance



Carving Aesthetic Design



Delicate Interior + Intelligent Central Console



Lion-eye Shaped Headlamp



Bowstring Shaped Waistline



Dual C-shaped Tail Lamp



17-inch 225 Tyre + Radial Blade Wheel Rim

Super Space

Flexible Design of Free and Large Space. Suitable for family going-out or friends gathering-together, Glory 580 is ready to save every precious moment of your life.

SPACE



Ergonomic Leather Seat



Luggage Length 390-1960mm, Creating Sufficient Space



2 Seats to 7 Seats: Multi-functional and Flexible Space



2780mm Extra Long Wheelbase



30+ Storage Spots





10-inch Smart Screen + Cellphone Connection



Push-start + Intelligent Key



Leather Multi-functional Steering Wheel

Super Driving and Seating Experience

The perfect combination of vigorous powertrain and sedan-level NVH, advanced in technology as well as user-friendly, which gives Glory 580 the controllability performance superior than the competitors, making sure your need for speed is satisfied while maintaining the best quietness.



1.5T Turbocharged Engine + 6MT/CVT Transmission

NVH

Over 200 Spots of NVH Designs



6 MT

CVT

ENJOY

Super Safety Functionalities

The considerate intelligence and safety equipment offers the high-quality driving and seating experience for you and your family. Everything only for you.



Electronic Parking Brake
电子手刹

Vehicle Running Recorder
行车记录仪

5-star Safety Vehicle Body
五星级安全车身

Four Air Bags
4安全气囊



Four Air Bags



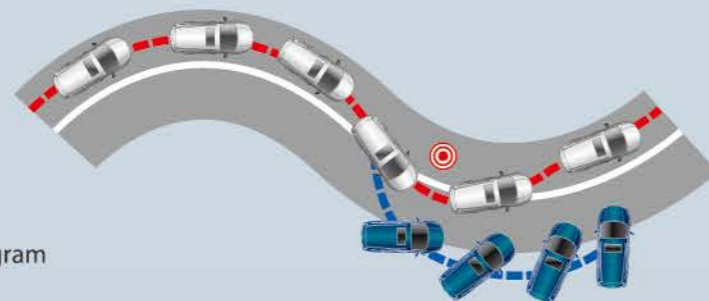
Electronic Parking Brake (EPB)



Vehicle Running Recorder



Electronic Stability Program



5-star Safety Vehicle Body



Front MacPherson Independent Suspension +
Four-wheel Disc Brake

Type	Elite Version		Comfort Version			Luxury Version	
	5MT	6MT	5MT	6MT	CVT	6MT	CVT
General Specifications							
Length × Width × Height (mm)	4680 × 1845 × 1715						
Wheelbase (mm)	2780						
Thread (Front/Rear) (mm)	1570/1572						
Curb Weight (kg)	1460	1510	1460	1510	1510	1510	1510
Total Weight (kg)	1985	2035	1985	2035	2035	2035	2035
Engine							
Engine Model	SFG18	SFG15T	SFG18	SFG15T	SFG15T	SFG15T	SFG15T
Engine Type	Natural Aspiration	Turbocharged	Natural Aspiration	Turbocharged			
Emission Standard	China V						
Displacement (mL)	1798	1498	1798	1498	1498	1498	1498
Max Power (kW)	97	110	97	110	110	110	110
Fuel Tank Volume (L)	58						
Fuel Consumption (L/100km)	7.6	7.4	7.6	7.4	7.4	7.4	7.4
Chassis							
Drive Mode	Front Engine; Front Drive						
Front Suspension	MacPherson Independent Suspension						
Rear Suspension	Torsion Beam Suspension						
Brake	Front Disc; Rear Disc						
Steering	(EPS) Electric Power Steering						
Tyre	215/60 R17	215/60 R17	225/60 R17	225/60 R17	225/60 R17	225/60 R17	225/60 R17
Exterior							
Chromed Front Grille	●	●	●	●	●	●	●
Sports Style Front Design	●	●	●	●	●	●	●
Lion-eye Shaped Head Lamp	●	●	●	●	●	●	●
Head Lamp Height Adjustment	●	●	●	●	●	●	●
Dual Front/Rear Foglamp/Reverse Lamp	●	●	●	●	●	●	●
LED Daytime Running Lamp	-	-	●	●	●	●	●
LED Side Turning Lamp	●	●	●	●	●	●	●
Sunroof	-	-	●	●	●	●	●
17-inch Sports Style Wheel Rim	-	-	-	-	-	●	●
Bracketless Front Windshield Wiper	-	-	●	●	●	●	●
Rear Windshield Wiper	-	-	●	●	●	●	●
LED High Mount Brake Lamp	●	●	●	●	●	●	●
Rear Spoiler	●	●	●	●	●	●	●
Luggage Rack	●	●	●	●	●	●	●
Engine Protection/Trim Plate	●	●	●	●	●	●	●
Body Kit	●	●	●	●	●	●	●
Engine Hood Gas Spring	●	●	●	●	●	●	●
Shark Fin Antenna	●	●	●	●	●	●	●
Flexible Space							
2+3+2 Seat Arrangement	●	●	●	●	●	●	●
6-way Adjustment for Driver Seat	-	-	●	●	●	●	●
4-way Adjustment for Front Passenger Seat	●	●	●	●	●	●	●
4/6 Split for Central Row Seat	●	●	●	●	●	●	●
Front center storage box	●	●	●	●	●	●	●
Second Row Central Armrest	-	-	●	●	●	●	●
Leather Cushion on Front/Rear Door Armrest	●	●	●	●	●	●	●
Multi-functional Adjustable Steering Wheel	-	-	●	●	●	●	●
Ergonomic Leather Seat	-	-	●	●	●	●	●
Full-ranged Safety							
Electronic Brake Assist (EBA)	-	-	●	●	●	●	●
Electronic Parking Brake (EPB)	-	-	-	●	●	●	●

Type	Luxury Version		Comfort Version			Luxury Version	
	5MT	6MT	5MT	6MT	CVT	6MT	CVT
Tyre Pressure Monitoring System (TPMS)	-	-	-	-	-	●	●
ABS	●	●	●	●	●	●	●
EBD	●	●	●	●	●	●	●
Front Dual Air Bags	●	●	●	●	●	●	●
Front Side Air Bags	-	-	●	●	●	●	●
Pretensioner Seat Belt	●	●	●	●	●	●	●
Seat Belt Height Adjustment	●	●	●	●	●	●	●
Engine Burglar Alarm System	●	●	●	●	●	●	●
Vehicle Burglar Alarm System	●	●	●	●	●	●	●
Child Lock	●	●	●	●	●	●	●
Child Seat ISOFIX Interface	●	●	●	●	●	●	●
Reverse Radar	●	●	●	●	●	●	●
Reverse Video	-	-	●	●	●	●	●
12V Power Outlet	●	●	●	●	●	●	●
Rear Defogger	●	●	●	●	●	●	●
Dual-tone Horn	-	-	●	●	●	●	●
Intelligent Equipment							
PEPS (Keyless Entry + Push-start)	-	-	-	-	-	●	●
Dual Electronic A/C	-	-	●	●	●	●	●
HD Touch Screen Audio System	-	-	●	●	●	●	●
Power Windows	●	●	●	●	●	●	●
Auto-down Power Windows							
Jam Protection Power Windows	On Drive Side	On Drive Side	On Drive Side	On Drive Side	On Drive Side	On Four Doors	On Four Doors
Remote Window Lifting	●	●	●	●	●	●	●
Remote Window Descending	●	●	●	●	●	●	●
Remote Central Lock (including Tail Door)	●	●	●	●	●	●	●
Foldable Remote Key	●	●	●	●	●	●	●
Doors Auto-locking	●	●	●	●	●	●	●
Crash Auto-unlocking	●	●	●	●	●	●	●
Number of Speakers	4	4	6	6	6	6	6
Outer Rearview Mirror Power Adjustment	-	-	●	●	●	●	●
Outer Rearview Mirror Auto Fold	-	-	●	●	●	●	●
Outer Rearview Mirror Heating	-	-	-	-	-	●	●
Vehicle Running Recorder	-	-	-	-	-	●	●
Delicate Interior							
Color	Black	Black	Black	Black	Black	Black+Brown	Black+Brown
Cup Holder	●	●	●	●	●	●	●
Dual Sun Visor (With Makeup Mirror and Lamp)	无灯 No Lamp	无灯 No Lamp	●	●	●	●	●
Anti-dazzling Inner Rearview Mirror	●	●	●	●	●	●	●
Dashboard Information Screen	●	●	●	●	●	●	●
Interior Lamp	●	●	●	●	●	●	●
Luggage Lamp	●	●	●	●	●	●	●
Chromed Door Handle	-	-	●	●	●	●	●
Glove Box	●	●	●	●	●	●	●

Note: "●" stands for standard, "-" stands for not available.

All the technical parameters and equipment details in this table are limited to the current status of the products. Any update of the product or revision to the equipment shall be included in our further notice.



White



Brown



Red



Blue



Black



Друштво за производство, промет и услуги АБЦ-БРОТХЕР ДООЕЛ Скопје
ул. 2 бр. 142, Визбегово, 1000 Скопје, Македонија

 Tel. +389 2 261 7191  Website www.abcbrother.mk  Email info@abcbrother.com.mk

 Facebook [@abcbrotherdfsk](https://www.facebook.com/abcbrotherdfsk)  Instagram [@abc.brother](https://www.instagram.com/abc.brother)