

Regal and Valiant





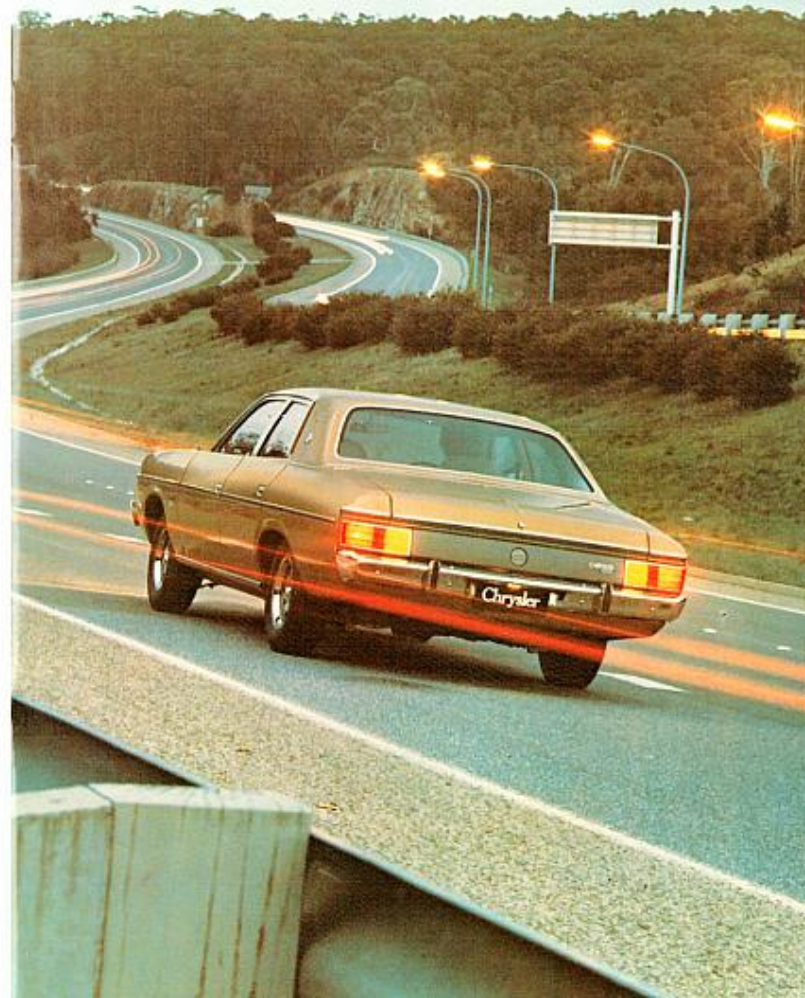
A whole new deal for when the going gets rough.

It's not every day you or your Chrysler will be expected to handle conditions such as these. Pot holes that try to shake and rattle your bones. Rocks and rubble that attempt to turn your car off the road. Sandy spots and muddy patches encouraging you to make a slip.

Happily, this kind of driving is usually left to the rally driver. The average motorist rarely finds himself facing such extreme conditions. But if he does, he'll truly appreciate the comfort and improved handling and safety factors of Chrysler's Radial Tuned Suspension that rides on sturdy, steel belt tyres.

Chrysler's Radial Tuned Suspension smooths out the pot holes and rough surfaces and makes handling a delight during normal, day to day road use.

On the highway your car will respond obediently and immediately during high speed cornering and sudden lane changes necessary when avoiding trouble.



How we made a good performer, better.

Summing up a good car nowadays is simple. One that performs well, is economical and of course, reliable.

Combining these qualities is not so simple. A car that performs well on the road usually does badly at the petrol pump.

A car that's economical might not be large enough for your family's needs, or have sufficient power to pull your holiday van or boat without feeling the strain.

And reliability? What good is a car that refuses to start on cold mornings or continues to stall in heavy traffic when the heat's on?

That's why Chrysler developed Electronic Lean Burn. A major advance in computerised ignition control and now fitted to all Valiants and Regals. Known simply as ELB it monitors up to six separate engine functions at a time and accurately controls the carburettor and ignition system. A lot of the disadvantages associated with emission control have been eliminated with ELB. So much so, fuel savings of up to 25% have been recorded.* Now that's economy.

While saving on fuel consumption ELB increases overall engine performance. Response to the accelerator is immediate and your engine will start and run smoothly regardless of weather conditions.

*Tested by the procedures stipulated by the Standards Association of Australia for their test no. AS2077/1977.

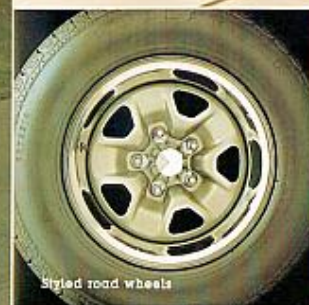




Laminated Windscreen



Instrumentation



Stylized road wheels



Front seats with centre arm rest



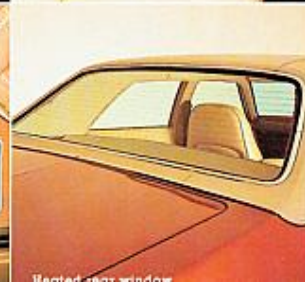
Q.H. high beam lights



Rear seats with standard trim



Standard radio



Heated rear window

Chrysler Valiant.

One thing we have plenty of in Australia is room. Big cities, miles of coastline and vast inland deserts.

It's a big country and it takes a big car to make it. That's why Chrysler's Valiant makes sense. It's a family car. 6 cylinder power plus economy. Plenty of room on the inside for long legged adults and fidgety kids.

Combine the power of Valiant's Hemi sixes (Standard 4.0 or optional 4.3 litre or the big 5.2 litre V8) with Chrysler's factory fitted towing packages and you're on your way to a great holiday.

And look at all the other features. New instrumentation with push-button radio standard.

Remote control side mirror, soft grip steering wheel and electric clock.

Reclining bucket seats with centre arm rest that folds up to fit 3 people in front. Quartz Halogen high beam lights, styled wheels, and bumper overriders for extra protection.

Loop pile carpet throughout, even on the doors as scuff pads.

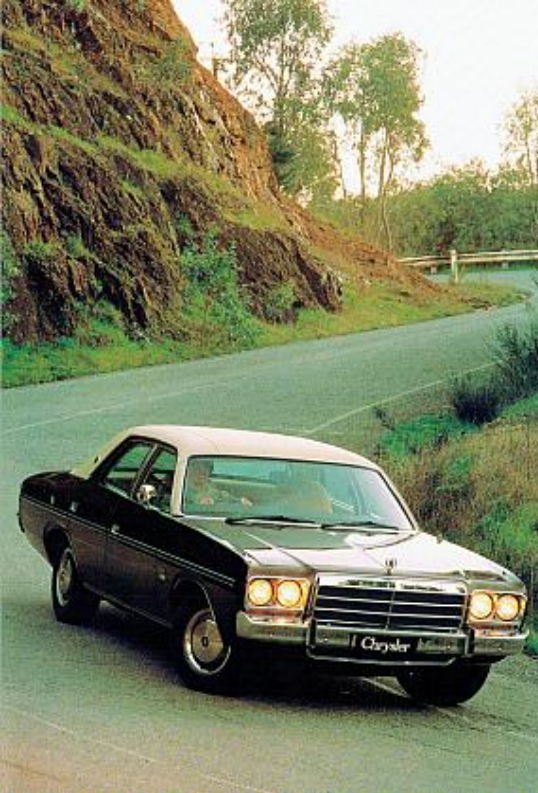
Laminated windscreen and heated rear window, standard.

Flow through ventilation and prismatic rear-view mirror with day/night switch that cuts reflected glare. Lighting in the glove box, ashtray, in the boot and under the bonnet.

Chrysler's Radial Tuned Suspension, power boosted disc brakes and Electronic Lean Burn ignition system.

And a list of options that let you decide how best to equip your car. Power steering, radio/stereo cassette player and air conditioning.

Whatever way you look at it Valiant makes good sense.



Instrumentation



Front seats with cloth trim



Rear seats with centre arm rest



Centre console

Chrysler Regal.

Chrysler Regal really lives up to its name. It's a very special feeling owning a car so luxuriously appointed and tastefully styled.

A classically designed grille, flanked by dual headlights leaves no doubt to the Regal's distinguished pedigree.

A colour co-ordinated interior with reclining bucket seats, richly upholstered in cloth and quality vinyl, cradle you firmly over long journeys. Retractable front and rear seat belts and a rear seat with fold down arm rest give extra touches of comfort and convenience.

Extensive attention to sound-proofing ensures a peaceful journey while you enjoy a little travelling music on your standard push-button radio. A quartz crystal electric clock keeps time accurately, to within a minute every month.

A handy key light guides you to the ignition at night.

A tinted, laminated windscreen cuts down on glare and a heated rear window gives clear vision on frosty mornings. Bumpers are protected by over-riders front and rear.

Regal draws its power from Chrysler's 4.3 litre Hemi engine, governed by exclusive computerized Electronic Lean Burn for maximum engine efficiency and economy. A fuel pacer also contributes to economical driving.

From your position behind the padded steering wheel you'll fully appreciate the new instrumentation, reliable Chrysler Radial Tuned Suspension and power-assisted front disc brakes. A 3-speed automatic console shift with high-rise arm rest is standard, or a column shift with fold down centre arm rest.



Power windows



Instrumentation



Cast alloy wheels



Front seats with standard trim



Rear window defroster



Rear seats with centre arm rest



Centre console



Laminated windscreen

Regal SE.

Introducing Chrysler Regal SE. A car that establishes new standards in travelling comfort.

Options become almost obsolete in a car that has everything.

Air conditioning, laminated windscreen, tinted glass, power steering and power windows, V8 Engine, automatic transmission, cast alloy wheels, vinyl roof, two-spoke steering wheel, rear window defroster, roof console with map and cabin lamps and front and rear retractable seat belts.

The SE surrounds its driver with luxury. Smooths him in comfort. With cloth covered seats, available in leather if you wish. A push-button radio with power antenna and 4-speaker cassette player are standard.

Take your time from an incredibly accurate quartz crystal, electric clock. Rich carpet extends even to the boot.

A thoughtful touch is the extra attention paid to sound deadening insulation that keeps out annoying traffic noises.

Power steering and Chrysler's Radial Tuned Suspension combine to give effortless control while Chrysler's Electronic Lean Burn system keeps a watchful eye on fuel consumption. A fuel pacer helps you drive more economically.

Regal SE. Could you think of a more appropriate name for a car that has so much?



Valiant Wagon.

Chrysler's Valiant Wagon. It has all the space you've ever needed to carry you and your luggage on holidays and business trips.

Economically priced it's considerably better equipped than many comparable wagons.

Push-button radio and clock are standard.

Carpeted throughout the passenger and large cargo area with loop pile, even the doors are protected by scuff pads.

Visibility is excellent and there's a rear air deflector to help keep the rear window free of dust.

Front bucket seats recline at the touch of a lever and there's a comfortable centre cushion arm rest.

A laminated windscreen is standard and new instrumentation supplies driver information at a glance. Overriders protect the front bumper. There's a convenient remote control side mirror and inside a prismatic rear view mirror with day/night switch to eliminate glare hazard at night. Quartz Halogen High Beam lights up the road and Convenience lights are fitted in the glove box, ashtray and at floor level. There are two interior lights, one front and one in the back and a handy bonnet light.

Front disc brakes are power boosted and Chrysler's Radial Tuned Suspension keeps you on the straight and narrow. The standard engine is the 4.0 litre, 6 cylinder Hemi engine. Economy is looked after by Chrysler's incredible Electronic Lean Burn ignition system.

The list of options available gives you the choice of factory fitted towing packages to handle the heavy loads and the 6 cylinder 4.3 Hemi engine or alternatively, you can choose the powerful 5.2 litre V8.



Regal Wagon.

When you combine this much space with this much luxury you've gone about as far as you can go to give the true wagon lover everything he's always wanted in a wagon.

A colour co-ordinated interior with reclining bucket seats, richly upholstered in cloth and quality vinyl, so comfortable and restful on long journeys. A soft grip steering wheel looks over a quartz crystal clock, accurate to within a minute a month.

New instrumentation and a push-button radio rest in a woodgrain finished panel.

Visibility is excellent. There's a tinted laminated windscreen up front and a rear air deflector to help protect the rear window from dust.

A power tailgate operates from the dashboard and on top of everything else there's a factory fitted, chrome roof rack to increase your load capacity.

Regal draws its power through the standard automatic transmission from Chrysler's 4.3 litre six, giving all the towing power you need. (Or optional 5.2 litre V8).

A console shift with high rise arm rest is standard. An optional column shift is available with fold down centre arm rest. A special fuel pacer contributes to economical driving.

To handle the heavy loads choose from the optional, factory fitted towing packages.

Chrysler's Radial Tuned Suspension and Electronic Lean Burn Ignition System combine to give you a great handling, smooth running, reliable Regal Wagon in many weather.





Options.

1. Road hugging, cast alloy wheels. They look great rolling or at rest.
2. The cool comfort of car air conditioning makes driving on long trips and in heavy traffic a breeze.
3. A sound choice. A radio/cassette player. Lets you listen to the news or the blues.
4. A separate, 4-speaker cassette player for all round sound. (Regal Sedan only)
5. Seat yourself in luxury, the true luxury of leather seating that lasts and lasts. (Regal SE only).
6. Front seat arm rest with automatic column shift. An extra touch of comfort you'll appreciate, especially on long trips. (Regal only)
7. Power steering takes all the work out of cornering and turning and gives you the ease of fingertip control.
8. Choose from 2 factory fitted towing packages which take care of the heavy loads.
9. For that exclusive look that sets your car apart, ask about a colour co-ordinated vinyl top.

Specifications.

Dimensions

Valiant, Regal and Regal SE, Sedans
 Overall Length: 5017 mm (197.5")
 Overall Width: 1894 mm (74.6")
 Overall Height: 1407 mm (55.4")
 Wheel Base: 2819 mm (111.0")
 Front Track Valiant: 1498 mm (59.0")
 Regal/Regal SE: 1495 mm (58.8")
 Rear Track Valiant: 1505 mm (59.3")
 Regal/Regal SE: 1502 mm (59.1")

Transmissions

Valiant, Regal Wagons
 Overall Length: 5061 mm (199.3")
 Overall Width: 1894 mm (74.6")
 Overall Height Valiant/Regal: 1417 mm (55.8")
 Wheel Base: 2819 mm (111.0")
 Front Track Valiant: 1498 mm (59.0")
 Regal: 1495 mm (58.8")
 Rear Track Valiant: 1505 mm (59.3")
 Regal: 1502 mm (59.1")

Rear Axles

Type: Semi-floating Hypoid gear drive.
 Suspension
 Front: Independent, torsion bar and dual acting hydraulic telescopic shock absorbers. Anti-sway bar fitted to all models. Rear: Leaf springs with double acting hydraulic telescopic shock absorbers, with rear spring ISO clamp-standard on all Sedan models.

Steering

Manual: Recirculating ball and nut. Turn to lock—4.5. Power: Constant control (co-axial). Turn lock to lock—3.5 (Standard Regal SE—optional on all other models only with automatic transmission).

Brakes

Front disc, Rear drums, power boosted. Tandem master cylinder.

Wheels & Tyres

Wheels: 5 stud double sided safety rims 6.0" x 14" are fitted to all models. Cast alloy standard on Regal SE.
 Tyres: ER 78S 14 Steel Belt Tyres are fitted to all Valiant and Regal, Sedan and Wagon models. Regal Wagons and Regal SE are fitted with FR 78S 14 Steel Belt Tyres.

You're covered by Chrysler's 12 months/unlimited kilometres warranty. Full protection for your first year's driving.

"Always consult your Chrysler dealer for the latest details on specifications, options, prices and availability. All product illustrations and specifications referred to herein are correct at the time of publication approval. Some of the equipment shown on product illustrations is optional at extra cost and some options may be required in combination with other options."

Subject to any applicable Federal, State or Territory laws or ordinances which may apply from time to time, Chrysler Australia Ltd. and/or Chrysler Australia (Sales) Pty. Ltd. reserves the right, without notice or obligation to discontinue or make changes to designs, specifications, colours and materials of the products and options referred to herein at any time without incurring any liability to any purchaser thereof."

Chrysler Australia Limited.
 Chrysler Australia (Sales) Pty. Limited.

CM CHRYSLER RANGE OPTIONS	SEDAN			WAGON	
	Valiant	Regal	Regal SE	Valiant	Regal
Towing Pack—Medium Duty	O	O	O	O	O
Towing Pack—Heavy Duty	O	O	O	O	O
Leather Bucket Seats	NA	NA	O	NA	NA
3 Speed Column Shift Auto	O	O	NA	O	O
2.92:1 Sure Grip Axle	O	O	O	O	O
4.3 Litre 6 Cyl. Engine	O	S	NA	O	S
5.2 Litre V8 Engine	O	O	S	O	O
Air Conditioning	O	O	S	O	O
Radio/Stereo Cassette Player	O	O (1)	NA	O	O
Tape Player 4 Speaker System (NA with Column Shift Trans.)	NA	O	S	NA	NA
Power Steering (Mandatory with V8 Engine) (2)	O	O	S	O	O
FR78S 14 Steel Belt Tyres	O	O	S	O	S
Vinyl Roof	O	O	S	NA	NA
Metallic Paint	O	NC	NC	O	NC
Cast Alloy Wheels (Classic 6.00")	O	O	S	O	O
Centre Cushion Armrest	S	O	NA	S	O

O—OPTIONAL S—STANDARD NA—NOT AVAILABLE NC—NO COST

(1) Only available with column shift transmissions

(2) Only available with Automatic transmission

ENGINE DETAILS	6 cylinder 4.0 litre (Standard in Valiant Sedan and Wagon)	6 cylinder 4.3 litre (Standard in Regal Sedan and Wagon—Optional on Valiant models)	8 cylinder 5.2 litre (Standard in Regal SE—Optional on all Valiant and Regal models)
Type:	6 cylinder, In-Line, O.H.V.	6 cylinder In-Line, O.H.V.	8 cylinder 'VEE' O.H.V.
Bore:	95.5 mm (3.76 in.)	99.3 mm (3.91 in.)	99.3 mm (3.91 in.)
Stroke:	93.5 mm (3.68 in.)	93.5 mm (3.68 in.)	84.0 mm (3.31 in.)
Capacity:	4014 cc (245 cu. in.)	4345 cc (265 cu. in.)	5205 cc (318 cu. in.)
Compression Ratio:	9.0:1	9.1:1	8.2:1
Carburettor:	Single down draught, two barrel with automatic choke.	Single down draught, two barrel with automatic choke.	Single down draught, two barrel with automatic choke.
Ignition System:	Electronic	Electronic	Electronic
Electronic Lean Burn:	Standard	Standard	Standard

