



By appointment  
to HM The Queen  
motor car manufacturers  
Bentley Motors Limited  
Crewe Cheshire



By appointment  
to HRH The Prince of Wales  
motor car manufacturers  
Bentley Motors Limited  
Crewe Cheshire



**BENTLEY**

**BENTAYGA RANGE**



Bentayga Speed WLTP drive cycle: fuel consumption, mpg  
(l/100km) – Combined 19.2 (14.7). Combined CO<sub>2</sub> – 335 g/km.



BENTAYGA RANGE





Bentayga V8 WLTP drive cycle: fuel consumption, mpg (l/100km) –  
Combined 21.2 (13.3). Combined CO<sub>2</sub> – 302 g/km.

INTRODUCTION <sup>06/</sup> DESIGN <sup>12/</sup> AN ENHANCED  
EXPERIENCE <sup>22/</sup> TECHNOLOGY <sup>30/</sup> PERFORMANCE <sup>42/</sup>  
PERSONALISING YOUR CAR <sup>52/</sup> WORLD OF BENTLEY <sup>76/</sup>  
SPECIFICATIONS AND OPTIONS <sup>82</sup>

Photography – colour specification of cars illustrated:

<b>Bentayga V8</b>	<b>Bentayga Speed</b>
Dragon Red exterior	Orange Flame exterior
Porpoise interior	Newmarket Tan leather and Beluga Alcantara interior
Carbon Fibre technical finish	Carbon Fibre technical finish

Bentayga Speed is available to order in all markets except EU28, Switzerland, Norway, Ukraine, Turkey, Israel and Vietnam.  
It will be available to order in these markets in Q3, 2019. Please note, Bentayga Speed will not be sold in mainland China.





## Join us on an adventure.

Bentayga combines astonishing performance with technological innovation and levels of luxury, second to none. It has the power to impose itself on every environment, from the most exhilarating roads to the most challenging terrain. With meticulous craftsmanship and the finest natural materials throughout, it will transport you and your passengers in unparalleled comfort.

No two adventures are the same, and neither are Bentayga. Bentayga V8 has a dynamic sporting feel, while Bentayga Speed represents the pinnacle of both performance and luxury.

Bentayga V8 WLTP drive cycle: fuel consumption, mpg (l/100km) – Combined 21.2 (13.3). Combined CO<sub>2</sub> – 302 g/km.



## Bentayga V8.

Bentayga V8 balances impeccable levels of craftsmanship with exhilarating sporting performance. Bold styling cues create a sleek, contemporary look, while the most advanced V8 engine in the world delivers an engaging driving experience.

770 Nm (568 lb ft) of torque takes you from 0 to 60 mph in 4.4 seconds (0 to 100 km/h in 4.5 seconds) and on to a top speed of 180 mph (290 km/h), accompanied by the immensely satisfying Bentley V8 sound as you accelerate.

The weight savings gained from the lighter V8 engine result in an engaging, dynamic drive with remarkably agile handling. This is an SUV that is as adept at navigating the city as it is at escaping it.

Bentayga V8 WLTP drive cycle: fuel consumption, mpg (l/100km) – Combined 21.2 (13.3). Combined CO<sub>2</sub> – 302 g/km.







## Bentayga Speed.

Driven by the most technically advanced 12-cylinder engine in the world, Bentayga Speed is exceptionally powerful with an attitude to match.

Delivering a breathtaking 626 bhp (635 PS) of power and 900 Nm (664 lb ft) of torque, this formidable SUV can take you from 0 to 60 mph in 3.8 seconds (0 to 100 km/h in 3.9 seconds) and on to a top speed of 190 mph (306 km/h)\*. Nothing else can compete with its unique combination of on-road exhilaration, off-road capability and outright sporting luxury.

Its performance is mirrored in its purposeful exterior style and distinct interior aesthetic. Dark-tint chrome, a signature Speed finish, can be seen on the front grilles and inside the lights – the finishing touch to an already striking Bentley. From contemporary body-coloured styling additions to an exclusive new 22" wheel design and subtle Speed badging, this is a Bentayga that commands attention. Inside, lightweight black Alcantara\*\* is used in key areas such as the steering wheel – a motorsport-inspired touch with a distinctly modern feel. Every element contributes to the perfect balance between sport and comfort.

Bentayga Speed WLTP drive cycle: fuel consumption, mpg (l/100km) – Combined 19.2 (14.7). Combined CO<sub>2</sub> – 335 g/km.

\*190 mph (306 km/h) with Carbon Ceramic Brakes.  
\*\*Leather can be used in place of Alcantara as a no-cost option.



DESIGN







## Different Bentley. Same DNA.

When Bentayga was originally conceived, the ultimate aim of Bentley's designers was to extend their world-renowned design values of exceptional materials, exclusivity and individuality, to create a truly extraordinary SUV.

There has never been an SUV so meticulously crafted, with Bentley's unmistakable design language reinterpreted for today's modern audience. Yet, across all aspects, in broad strokes and macro detail, Bentayga remains, in every sense, a Bentley.







## Designed with light.

Observe the light play off the dynamic planes and flowing contours of Bentayga's form. This was the design principle realised through Bentley's renowned sculptural process. Now, the aluminium body shell, supported with high strength steels, radiates formidable elegance.

The stance is muscular. The poise, dynamic. The impact, immediate. Bentayga is very much a modern design, yet the classic Bentley design cues strike you. The powerline sweeps back from the 'B' shaped wing vent to give the impression of speed even when the car is stationary. The four distinctive 'floating' adaptive LED headlamps frame the iconic matrix grille, while at the rear two large tailpipes hint at Bentayga's power. Striking wheel designs enhance the car's potent road presence.

Bentayga V8 WLTP drive cycle: fuel consumption, mpg (l/100km) – Combined 21.2 (13.3). Combined CO<sub>2</sub> – 302 g/km.







## Design that soars.

Like all Bentley interiors, the design of the cabin began with the Bentley wings. The famous marque inspired the architecture of the cockpit, forming the basis of a symmetrical, double-wing arrangement that flows from door to door. The use of striking and varied materials, such as sumptuous leather hides, soft-touch Alcantara, natural wooden veneers and high-gloss carbon fibre, reflects the multiple layers and textures of the extraordinary Bentayga drive experience.

Light floods in from above to illuminate the luxurious interior, courtesy of the tilt and slide panoramic roof. Even functional elements are executed in a tactile and uncompromising fashion, and every detail of the handcrafted cabin has been consistently designed to blend into one seamless whole. Hand cross-stitching\* follows the elegant styling lines exactly. Chrome bezels have a consistently tight geometry throughout. The ergonomic gear lever features a fluid chrome body finished in leather or Alcantara\*\*, while the 'B' at its head is encircled with three rows of knurling that match the rotary dial and bulls-eye air vents.



\*Cost option.

\*\*Alcantara only available on Bentayga Speed.





## DESIGN

### Designed to stand out.

Bentayga Speed makes the ultimate statement on the road. Infinitely powerful, this is a truly breathtaking SUV – even before the engine starts.

The stunning design of Bentayga has been heightened with the addition of some striking exclusive features. With body-coloured front and rear bumper splitters, side sills and unique tailgate spoiler, Bentayga Speed announces its arrival in style. The bold look is reinforced by a dark tint on the matrix grille and lower bumper grilles, as well as inside the lights, along with Speed badges and unique 22" ten-spoke Speed wheels – available in three finishes.

Inside the cabin, a new colour combination has been specifically designed to highlight the key styling lines and make a visual statement. For the first time on Bentayga, highly tactile Alcantara\* draws the eye across the car's exquisite interior features for an elevated, contemporary feel.

With contrast stitching on the diamond quilting and optional exclusive embroidery, Bentayga Speed proves that subtle details make a dramatic difference.

Bentayga Speed WLTP drive cycle: fuel consumption, mpg (l/100km) – Combined 19.2 (14.7). Combined CO<sub>2</sub> – 335 g/km.



\*Leather can be used in place of Alcantara as a no-cost option.



AN ENHANCED EXPERIENCE



Bentayga V8 WLTP drive cycle: fuel consumption, mpg (l/100km) –  
Combined 21.2 (13.3). Combined CO<sub>2</sub> – 302 g/km.





## Uncompromising in every sense.

There is no need to compromise on performance, capability or comfort when you choose an SUV. Bentayga has elevated the Sports Utility Vehicle to dramatic new levels, combining contemporary design with timeless craftsmanship, to deliver a distinctive look.

Alongside phenomenal power and innovative technology, practicality goes hand in hand with comfort. Whether you're golfing or skiing, heading across continents or across town, navigating roads or leaving them far behind, Bentayga is perfectly equipped for every journey.

Bentayga V8 WLTP drive cycle: fuel consumption, mpg (l/100km) – Combined 21.2 (13.3). Combined CO<sub>2</sub> – 302 g/km.



## The perfect vantage point.

However dramatic your location, it will be beautifully complemented by the elegance of the cabin interior.

Every element of the Bentayga cabin is crafted by hand. The veneers are carefully selected and meticulously mirror-matched to create a seamless flow of high-gloss wood or carbon fibre around the car's occupants. Chrome details, including the bulls-eye air vents, rotary control and gear lever body, continually catch the eye. The hides on every seat have been stitched with astonishing attention to detail. The quilting applied to the shoulders and bolsters, for example, has been rendered in perfect squares\* to echo the stitching of a tailored hunting jacket.

Bentayga is the only SUV available with a choice of four\*, five or seven\*\* seat configurations in one body style. In addition, the optional Front Seat Comfort Specification offers a six-setting massage function and 22 different types of adjustments including cushion and backrest bolsters, to offer the driver and passenger the highest possible levels of support. It's just one example of the near-limitless opportunities for personalisation when you commission a car that is built by hand.

Whatever your personal tastes and wherever you drive your Bentayga, one thing's for sure: you won't want to be anywhere else on Earth.

Bentayga Speed & V8 WLTP drive cycle: fuel consumption, mpg (l/100km) – Combined 19.2-21.2 (13.3-14.7). Combined CO<sub>2</sub> – 302-335 g/km.



\*Cost option on Bentayga V8.

\*\*Cost option.





## AN ENHANCED EXPERIENCE

### Ready for anything.

When it comes to the realities of modern luxury living, Bentayga is a car for all seasons and all lifestyles.

More than 20 innovative features have been designed to enable a whole spectrum of outdoor pursuits, across a vast range of climates and temperatures – from sea level on the Côte d’Azur to the snowline in the Sierra Nevada – so that your destination can be as exhilarating as the journey. Whichever Bentayga you choose, the engine delivers a towing capacity of 3.5 tonnes\* – more than ample for speedboats, support watercraft, gliders and horseboxes. The electrically retracting tow bar\*\* lies behind the rear bumper when not in use.

All features and accessories, from an aerodynamic roof box to a range of tailored storage solutions for skiing, fishing, diving and other active pursuits, offer the luxury of practicality, whilst echoing the unmistakable Bentayga styling. The hands-free tailgate, easy-load boot function and load assist tray are also engineered to operate in a simple, intuitive and seamless fashion.

Bentayga V8 WLTP drive cycle: fuel consumption, mpg (l/100km) – Combined 21.2 (13.3). Combined CO<sub>2</sub> – 302 g/km.











## Don't just see technology. Feel it.

Bentayga features a wealth of technological innovations that intuitively connect you to the road, the landscape and the outside world.

Bentley has long been setting the standard in luxury all-wheel drive engineering, integrating the latest technologies in discreet and unobtrusive ways. All are born of 'intelligent functionality' and can be simply configured to suit your personal tastes. Designed to empower, rather than overpower, they allow you to focus on the enjoyment of driving. More than ten driver assistance systems aid urban driving, grand touring and more robust off-roading.

Whatever adventures you embark on, Bentayga's technology will help you enjoy them to the full.







## From city roads to no roads.

Remarkable performance allied with exceptional handling and peerless ride comfort lets you experience every environment in world-class refinement.

Drive Dynamics Mode allows you to adapt to your surroundings (or your mood) using an intuitive rotary dial, giving you absolute confidence and total control. Whether you're navigating the city or enjoying the open road, you can switch instantly between four on-road pre-set driving modes – Comfort, Sport, Custom and Bentley. In Bentayga Speed, Sport mode has been pushed even further, to make the most of the car's phenomenal power and handling. It delivers an even more performance-orientated calibration of both the engine and the transmission, firmer suspension settings and an exhaust note with even more attitude.

The All Terrain Specification\*, available for Bentayga V8 and Bentayga Speed, adds four Responsive Off-Road Settings to those four standard configurations, to deliver more on-road and off-road settings than any other car. The 'Snow & Grass' setting provides grip on low friction surfaces, 'Dirt & Gravel' gives optimum traction on loose debris, 'Mud & Trail' configures the car's systems for muddy, uneven surfaces and 'Sand' gives greater confidence over dunes. And all the while, exhaustively tested underfloor protection ensures all key components are protected.







## An unrivalled driving experience.

The experience of driving a Bentley always has been – and always will be – at the heart of what makes it such an exceptionally desirable automobile. Bentayga is no exception.

Its comprehensive driver assistance systems are focused on enhancing and perfecting the ride experience – creating a cocoon of unrivalled comfort and security.

A wide range of technologies have been developed to aid driving in the city: Blind Spot Assist\*, Exit Warning\*, Reversing Traffic Warning\*, Traffic Sign Recognition\*, Top-View Camera, Pedestrian Warning\* and more. The head-up display artfully feeds driving-relevant information into your line of vision, without distracting from your driving line.

Longer journeys also take on a greater sense of freedom. Adaptive Cruise Control\*, Night Vision\*, Bentley Safeguard Plus\* and High Beam Assist allow you to enjoy Bentayga's performance at speed on the open road.

Bentayga V8 WLTP drive cycle: fuel consumption, mpg (l/100km) – Combined 21.2 (13.3). Combined CO<sub>2</sub> – 302 g/km.

\*Regional applicability.





## Intuitively connected.

A suite of connected services use real-time information to respond intelligently to the ever-changing world around you, making your journey safer, smarter and more convenient.

With a built-in Wi-Fi hotspot, you and your passengers can stay connected via your personal devices and the Apple CarPlay®-enabled infotainment system.

Real-time traffic information incorporates up-to-the-minute traffic data into the navigation system, enabling you to plan your journeys more effectively, while Google's Point of Interest search gives you easy, voice-controlled access to information about notable locations you may encounter on the way.

In the event of an accident, Private eCall\* will connect you to an emergency call centre. If you ever break down, Roadside Assistance call provides direct contact with the Bentley Roadside Assistance team.

You can even check on your car when you're elsewhere. My Car Status, a feature accessed via the My Bentley smartphone app, provides useful information about your vehicle's status, wherever you are.







## Highly entertaining.

Whether you're heading across town or across the globe, you'll have a wealth of entertainment at your fingertips.

Two independent 10.2" touchscreen entertainment tablets sit behind the front headrests. Passengers can access main infotainment functions such as radio and video entertainment, plus navigation features, games, video conferencing and media streaming.

Epic soundscapes inside the car will match the most magnificent of vistas outside, thanks to the Naim for Bentley in-car audio system option created specifically for Bentley. The most powerful system ever installed in the SUV sector, it uses active-bass technology to enhance the perception of bass alongside groundbreaking acoustic design. There are a total of 20 speakers, driven by a 1,950W 21-channel amplifier.

Two other concert hall quality sound-system options are also available: the standard Bentley system and Bentley Signature Audio.





# PERFORMANCE



Bentayga Speed WLTP drive cycle: fuel consumption, mpg  
(l/100km) – Combined 19.2 (14.7). Combined CO<sub>2</sub> – 335 g/km.



## Different engines. Shared performance.

Whether you opt for the thrillingly responsive V8 engine or the effortlessly powerful W12 engine, you will experience Bentayga's remarkable capabilities. For Bentley DNA runs deep in them both, delivering the hallmarks of exhilarating power and effortless acceleration.

Those familiar with the Bentley driving experience will appreciate Bentayga's peerlessly refined drive. Both engines offer groundbreaking credentials, with phenomenal power and torque, leading to a surge of acceleration that has to be experienced to be believed.

Raw power is just as important as efficiency and versatility. All powertrains offer luxury across every landscape, with Bentayga Speed and Bentayga V8 supremely capable off-road. They are specifically engineered to perform perfectly at lateral and longitudinal angles of up to 35°, and in a wading depth of up to 500 mm. The advanced Torsen all-wheel drive (AWD) system delivers power to the wheels with the greatest available traction – while delivering unwavering confidence to the driver. The 8-speed transmission also ensures optimum gear selection and smooth irresistible acceleration through multiple gear changes, even across differing inclines.

Bentayga V8 WLTP drive cycle: fuel consumption, mpg (l/100km) – Combined 21.2 (13.3). Combined CO<sub>2</sub> – 302 g/km.







## The road consummately travelled.

Bentayga is unmistakably a Bentley – the only SUV that delivers the marque’s unique and exhilarating driving experience.

Its ‘all-road’ performance, unrivalled ride comfort and incomparable handling attributes are everything you would expect from a true Bentley. Its pulsating engines, allied with the world’s first 48V Active Roll Control system – known as Bentley Dynamic Ride\* – unite the presence of an SUV with the performance of a sports car and the refinement of a luxury saloon.

Combine this with a wealth of cutting-edge driver assistance features and you begin to understand why Bentayga doesn’t just lead the luxury SUV category – it defines it. As you would expect from a Bentley, all of these elements are exquisitely packaged.

Bentayga V8 WLTP drive cycle: fuel consumption, mpg (l/100km) – Combined 21.2 (13.3). Combined CO<sub>2</sub> – 302 g/km.

\*Fitted as standard on Bentayga Speed, available as a cost option on Bentayga V8.





## Bentayga V8.

Bentayga V8 is powered by the most advanced V8 engine ever built. Powerful and efficient, it offers exhilarating performance and a dynamic driving experience accompanied by a distinctive sound that announces the car's immense capabilities.

The engine can produce a thrilling surge of power, with 542 bhp (550 PS) at your disposal. It reaches its maximum torque of 770 Nm (568 lb ft) at just under 2,000 rpm and maintains this through to 4,500 rpm, ensuring rapid acceleration whatever your driving speed. In fact, Bentayga V8 can take you from 0 to 60 mph in just 4.4 seconds (0 to 100 km/h in 4.5 seconds), and on to a blistering top speed of 180 mph (290 km/h).

The V8 engine isn't just exceptionally powerful, it's also highly efficient. It employs a Variable Displacement System to shut down four of the eight cylinders when not required, reactivating them again as soon as they're needed without the driver even noticing. 'Start-stop' technology is deployed not only when the vehicle is stationary, but also at 'near-stop' speeds. The result is emissions of just 260 g/km of CO<sub>2</sub>, a combined driving fuel economy of 17.0 mpg\* and a generous range of over 745 km.

In short, the V8 engine delivers exhilaration as well as efficiency to create an extraordinary driving experience.

Bentayga V8 WLTP drive cycle: fuel consumption, mpg (l/100km) – Combined 21.2 (13.3). Combined CO<sub>2</sub> – 302 g/km.

\*2019 EPA estimates not available at time of publication.  
See [www.fueleconomy.gov](http://www.fueleconomy.gov) for updated information.  
Your mileage will vary and depends on several factors  
including your driving habits and vehicle condition.







## Bentayga Speed.

With a class-leading W12 engine, Bentayga Speed delivers performance that goes far beyond the natural expectations for an SUV. As you might expect from the W12 engines for which Bentley is famous, this 6.0 litre powerplant gives the car capabilities that are nothing short of staggering.

With a maximum torque of 900 Nm (664 lb ft) available at just a touch over idle speed, Bentayga Speed can accelerate from 0 to 60 mph in a mere 3.8 seconds (0 to 100 km/h in 3.9 seconds). And, with 626 bhp (635 PS) at your disposal, it will continue to gain speed for as long as the accelerator pedal is depressed, its velocity only reaching its plateau at a pulsating 190 mph (306 km/h).

A double-injection system employs a combination of direct and port injection technology to maximise fuel economy. With start-stop technology and a Variable Displacement

## PERFORMANCE

System, the W12 engine is highly efficient. The twin-scroll turbochargers have also been engineered for optimum response, eliminating any hint of turbo lag.

The sum total of these innovations is an engine that elevates both efficiency and power to provide an exceptionally rewarding driving experience that redefines what an SUV engine can do.

For ultimate exhilaration, Bentayga Speed's true power can be put to the test in Sport mode. This transforms an enjoyable drive into a truly exhilarating experience, reawakening the senses with a more performance-focused engine and transmission settings, greater exhaust character during start up and gear downshifts, and firmer suspension for enhanced handling.

Bentayga Speed WLTP drive cycle: fuel consumption, mpg (l/100km) – Combined 19.2 (14.7). Combined CO<sub>2</sub> – 335 g/km.







PERSONALISING YOUR CAR



# Every adventure is unique.

With a host of accessories and styling options allowing you to configure your Bentayga to your personal taste, it is highly unlikely you will ever see another one quite like yours.

You can choose from an extensive palette of exterior paint colours, all of which are designed to maintain their brilliance for many years to come. With numerous different wheel designs, hide options, beautiful natural veneers and distinctive trim options, almost every visible feature of your Bentayga can be customised to your own specification.

Should you desire even more freedom to tailor your Bentayga, the Mulliner team at the Bentley factory in Crewe can undertake completely bespoke modifications to meet your specific requirements.

Bentayga V8 WLTP drive cycle: fuel consumption, mpg (l/100km) – Combined 21.2 (13.3). Combined CO<sub>2</sub> – 302 g/km.







### Exterior finish.

Colour can be a powerful expression of who you are. That's why we offer a wide range of exterior colours carefully curated by the Bentley design team, each one chosen to emphasise Bentayga's unique presence on the road.

There are 17 standard colours and 46 additional colours in the extended range. And from 2019, a new palette of Mulliner colours will be introduced, with 25 further paints, including pearlescent and satin finishes, as well as 24 duotone options.

### Standard colours.

- Beluga (Solid)
- Camel\*
- Dark Cashmere\*
- Dark Sapphire
- Glacier White (Solid)
- Granite\*
- Hallmark\*
- Havana\*
- Marlin\*
- Meteor\*
- Midnight Emerald\*
- Moonbeam
- Onyx
- Portofino\*
- St. James' Red (Solid)
- Thunder
- White Sand\*



Wheels.

A range of striking 20", 21" and 22" alloy wheels are available in several styles, including five spoke directional wheels, seven twin-spoke wheels and ten spoke wheels. Made even more eye-catching by a variety of polished, painted and diamond-turned finishes, your choice of wheel can subtly alter the character of your SUV.

A stunning new 22" Speed wheel in a dynamic ten spoke design with a refined, sporting look is available in three finishes, exclusively for Bentayga Speed.



20" TEN SPOKE ALLOY WHEEL  
PAINTED



20" TEN SPOKE ALLOY WHEEL  
POLISHED



21" FIVE TWIN-SPOKE  
ALLOY WHEEL PAINTED



21" FIVE TWIN-SPOKE  
ALLOY WHEEL POLISHED



21" FIVE TWIN-SPOKE ALLOY WHEEL  
BLACK PAINTED AND DIAMOND TURNED



21" SEVEN TWIN-SPOKE  
WHEEL PAINTED



21" SEVEN TWIN-SPOKE WHEEL  
GREY PAINTED AND DIAMOND TURNED



22" FIVE SPOKE DIRECTIONAL  
ALLOY WHEEL PAINTED



22" FIVE SPOKE DIRECTIONAL  
ALLOY WHEEL POLISHED



22" FIVE SPOKE DIRECTIONAL ALLOY  
WHEEL PAINTED AND POLISHED



22" SPEED TEN SPOKE ALLOY WHEEL  
SILVER PAINTED



22" SPEED TEN SPOKE ALLOY WHEEL  
DARK TINT



22" SPEED TEN SPOKE ALLOY WHEEL  
BLACK PAINTED

Please refer to specifications and options pages 82 to 87 for standard and optional wheels.  
Not all options are available on all models.





## Veneers.

Bentley's enthusiasm for fine materials and handcrafted finishes can be clearly seen in Bentley's flawless veneers.

Each leaf of wood can be traced right back to the tree it came from; the beginning of an intricate process that takes around five weeks for every car. The veneers are sanded and lacquered five times, taking a full ten days to reach the Bentley standard of finish. The resulting shine is both lavish and deep, beautifully highlighting the natural grain of the wood.

There is an exceptional variety of veneers to choose from, including the light contemporary hues of Liquid Amber\*, the warm, rich tones of Burr Walnut and, for those seeking a different approach, a striking high-gloss carbon fibre\*.







Tamo Ash



Madrona



Burr Walnut



Dark Fiddleback Eucalyptus



Liquid Amber



Dark Stained Burr Walnut



Dark Stained Madrona



Piano Black



Carbon Fibre





## Hides.

Every inch of Bentayga’s interior is upholstered by hand. Crafting the hand-selected leather hides is a time-honoured process involving skills that take years to learn.

From the fascia to the leather headlining\*, every part of the handcrafted cabin requires a different approach. Sections of the hide with high natural elasticity are reserved for curved surfaces like the seats, rather than for piping or flatter areas such as door inserts. The steering wheel, meanwhile, is covered in a different type of leather, more resistant to the natural chemicals it absorbs from the driver’s skin.

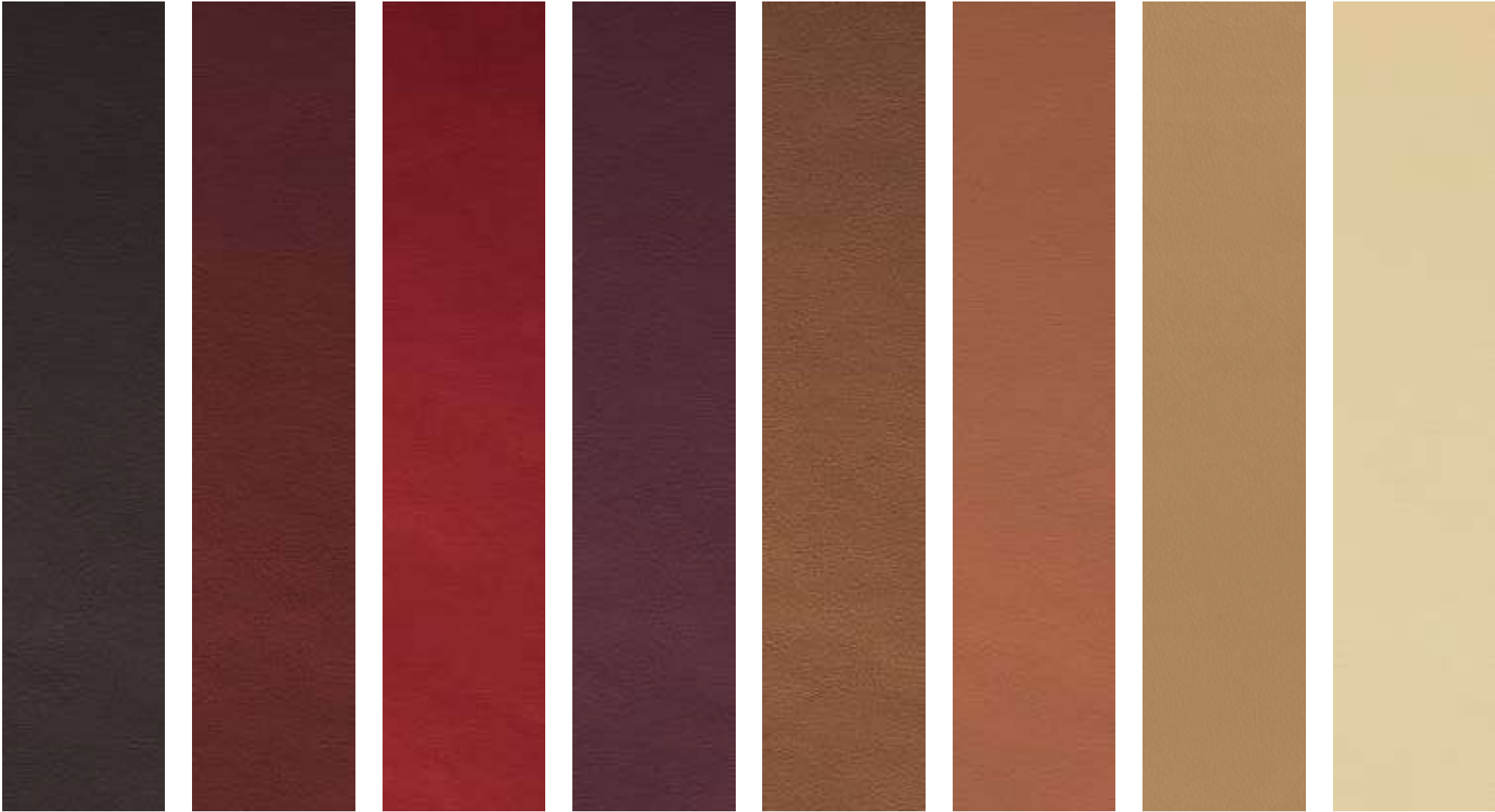
With the optional Speed colour split, unique to Bentayga Speed, the leather on the cushion and backrest centre panels, steering wheel, gear lever, lower knee rolls, upper pillar trim and headliner is replaced with Alcantara, accentuating the contemporary, sporting feel\*\*.

A generous range of hide colours can be commissioned for Bentayga, each one chosen by the Bentley design team to complement the interior perfectly.



\*Cost option.  
\*\*Leather can be used in place of Alcantara as a no-cost option.





Burnt Oak   Cricket Ball   Hotspur   Damson   Saddle   Newmarket Tan   Camel   Magnolia



Linen   Portland   Cumbrian Green   Imperial Blue   Porpoise   Brunel   Beluga

Please refer to specifications and options pages 82 to 87 for standard and optional hides.  
Not all options are available on all models. Please note, the colours reproduced are for representation purposes only and therefore vary slightly from the actual vehicle.





## Bentayga Styling Specification.\*

Bentayga is a car of both beauty and stature. But, for those who desire even more attitude, the Bentayga Styling Specification awaits.

This is a suite of carbon fibre additions created by the same team responsible for Bentayga’s sleek lines. The features in this cleverly designed package offer more than simply an aesthetic improvement – they actually improve aerodynamic performance and enhance how the SUV feels on the road.

In all, there are ten precision-engineered modifications fitted by your Bentley retailer to the front, rear and side of your Bentayga. These include a rear tailgate spoiler, front air blades, splitters for the front bumper grilles and side sill extensions.



## Blackline Specification.\*

For a more individual take on Bentayga’s elegant exterior styling, the Blackline Specification replaces all polished chrome details with black chrome alternatives.

Features including the bezels around the lights and number plates, the Bentley matrix grille and the Bentley ‘B’ wing vents take on a richer, darker sophistication.



Bentayga V8 WLTP drive cycle: fuel consumption, mpg (l/100km) – Combined 21.2 (13.3). Combined CO<sub>2</sub> – 302 g/km.





STANDARD SPECIFICATION

## Optional packages.

### Optional specifications.

#### BLACKLINE SPECIFICATION\*

- Exterior polished chrome replaced with black brightware

#### BLACK SPECIFICATION\*

- Exterior polished chrome replaced with black brightware
- Carbon fibre front bumper splitter, side sills, rear bumper diffuser and a prominent rear spoiler
- 22" Five spoke black painted directional wheel (Bentayga V8) or 22" Speed ten spoke black painted wheel (Bentayga Speed)

#### ACTIVITY SPECIFICATION\*

- Seven seat specification\*
- Tow bar\*
- Hands-free tailgate
- Sunshine specification
- Luggage management

#### EVENT SPECIFICATION\*†

- Rear Event Seat
- Tailgate down-lighters

#### SUNSHINE SPECIFICATION\*

- Electrically operated blinds for rear side windows
- Double sunvisor

#### FRONT SEAT COMFORT SPECIFICATION

(Five and seven seat configuration)

- Comfort headrests to front seats
- Front seats, 22-way electrical adjustment, two memory function

## PERSONALISING YOUR CAR

- Three-point seatbelts to front with electric height adjustment and memory system
- Heated and ventilated front seats with massage function

#### FOUR SEAT COMFORT SPECIFICATION WITH REAR CENTRE CONSOLE

- Front Seat Comfort Specification (as previously detailed)
- Two 18-way adjustable rear seats with rear centre console
- Comfort headrests to rear outer seats

#### SEVEN SEAT SPECIFICATION\*\*

- Three seats in second row
- Two electrically folding seats in third row

### Technology specifications.

#### ALL TERRAIN SPECIFICATION\*

- Drive Dynamics Mode with Responsive Off-Road settings
- Underfloor protection
- Top-view camera with auto-dimming mirrors
- Luggage management

#### CITY SPECIFICATION\*

- Park assist
- Top-view camera with auto-dimming mirrors
- Traffic sign recognition
- Pedestrian warning\*
- City safeguard
- Reversing traffic warning

#### TOURING SPECIFICATION\*

- Adaptive cruise control
- Head-up display
- Bentley Safeguard Plus (including city safeguard)
- Lane assist
- Traffic assist
- Night vision

#### ENTERTAINMENT

- Bentley Rear Entertainment\*
- Naim for Bentley\*
- Bentley Signature Audio\*

### Design specifications.

#### MULLINER DRIVING SPECIFICATION†

- 22" Five spoke wheel – black painted and polished
- Colour Specification
- Diamond-quilted seats, front and rear doors
- Drilled alloy sports foot pedals
- Jewel fuel and oil filler cap
- Embroidered Bentley emblems

#### COLOUR SPECIFICATION††

- Full choice of hide and carpet colours
- Full choice of interior colour combinations\*\*
- Leather trim to headliner and upper pillars

\*Regional applicability. Certain options and specifications may appear as standard or may not be available. Please contact your local retailer for more information.

\*\*Seven-seat configuration is available in two interior colour combinations.

†Fitted as standard on Bentayga Speed.





## Your choice.

Commissioning your Bentayga involves an exciting journey through the wealth of available options. Bentley retailers can offer advice and guidance across a wide range of choices including exterior paint, veneers, hides and stitching.

If you already know what you're looking for, or you simply want to experiment in your own time, the Bentley Configurator enables you to create your ideal car. Your configuration can then be saved and emailed to your retailer.

You can explore the possibilities at [BentleyConfigurator.com](https://www.bentleyconfigurator.com)

Bentayga V8 WLTP drive cycle: fuel consumption, mpg (l/100km) – Combined 21.2 (13.3). Combined CO<sub>2</sub> – 302 g/km.





## Accessories.

Bentley’s designers and engineers are involved in setting the specifications for Bentayga accessories. Each one is designed with the same meticulous attention to detail as the car itself, and all are rigorously tested to meet Bentley’s demanding standards.

The accessories have been created to cater for an enormous range of lifestyles and outdoor pursuits, including:

- Bentley child seats\* which can be personalised with your child’s name and trimmed to match your interior specification
- A soft car cover that provides quality indoor protection for your Bentayga
- Snow chains for extra grip, handling and security in extreme conditions such as heavy snow or compacted ice
- A deployable sill step styled to complement your SUV, which automatically extends when the door is opened
- A sleek roof box designed to match the car’s aerodynamic styling
- A tow bar mounted cycle carrier that can securely carry two bicycles on the rear of the car



## Financing your Bentayga.

Bentley finance agreements are tailored to ensure you make the most of your investment.

While other financiers look only at the circumstances of the customer, Bentley Financial Services create bespoke packages based not just on your needs and income, but also on the car you have in mind.

To discover more, please talk to your local Bentley retailer or visit [BentleyMotors.com](https://www.bentleymotors.com)



## Experience Bentayga.

As is the case with every Bentley, there is only one way to truly appreciate this car – to sit in the driving seat, to take the wheel in your hands and feel the breathtaking surge of acceleration as you put your foot down.

Because Bentayga isn’t just about exquisite craftsmanship, unrivalled style or limitless power. It’s an experience that is far greater than the sum of its parts; an adventure unlike any other.

To take the next step on the journey of acquiring your Bentayga, we recommend a conversation with a Bentley retailer. You can find our nearest showroom at [BentleyMotors.com](https://www.bentleymotors.com)

Start your adventure today.



WORLD OF BENTLEY



Bentayga V8 WLTP drive cycle: fuel consumption, mpg (l/100km) – Combined 21.2 (13.3). Combined CO<sub>2</sub> – 302 g/km.



## Enter an extraordinary world.

The world of Bentley extends far beyond the walls of a single factory in Crewe, England. From the sumptuous feel of a handmade leather jacket inspired by the interior cabin of our cars to the thrill of attending a race event as a VIP guest, there is no limit to where the Bentley experience can take you.

## The Bentley Collection.

In the Bentley Collection, contemporary design meets the finest materials. An exclusive, hand-picked selection of luxurious pieces whose effortless, understated elegance reflects Bentley's vision, passion and revered craftsmanship.

This timeless collection embraces stylish apparel, handcrafted leather accessories and contemporary home items, all taking their cue from Bentley's rich heritage and design language.

To view the complete Bentley Collection, please contact your local Bentley retailer, or visit the online store at: [shop.BentleyMotors.com](http://shop.BentleyMotors.com)







## The Bentley Experience.

With the opportunity to visit the factory in Crewe, the Bentley Experience offers a unique insight into the design, craft and engineering expertise required to create a Bentley. See the full model range and explore a dedicated personalisation area, bespoke Mulliner room and Bentley boutique, for a window into an extraordinary world.

To register your interest, please contact your local Bentley retailer.

## Unmissable events.

Bentley runs a number of experiences each year for drivers and enthusiasts. From our Extraordinary Drives experiencing the finest cuisine, luxury and culture whilst exploring some of the world's most beautiful landscapes, to becoming part of the team at a Blancpain endurance race or motoring event such as Goodwood Festival of Speed, there is a Bentley event to satisfy everyone from the ardent thrill seeker to the cultured adventurer.

To discover more, please contact your local Bentley retailer or visit [BentleyMotors.com](http://BentleyMotors.com)



## The Bentley Network.

Imagine an app that puts the world of Bentley in your hands. Available exclusively to Bentley owners, the Bentley Network app is a fast track to Bentley's world of unique events – with priority invitations to everything from thrilling driving experiences to intimate dinners and some of the most exhilarating races in the global motorsport calendar.

A wealth of innovative owner services includes initiatives such as Bentley on Demand\*, which allows you to use a Bentley on loan. And you can share your ideas, inspiration and experiences with an exclusive online community of Bentley owners just like yourself.

Simply search for 'Bentley Network' on the App Store or Google Play store.





SPECIFICATIONS AND OPTIONS



# Bentayga V8

## STANDARD SPECIFICATION

### EXTERIOR

- Choice of seven standard paint colours: Beluga (Solid), Dark Sapphire, Glacier White (Solid), Moonbeam, Onyx, St. James' Red (Solid), Thunder
- 21" Five twin-spoke alloy wheel – painted
- Brake system with Electronic Stability Programme (ESP) with Traction Control System (TCS), Anti-lock Braking System (ABS), Electronic Brake Force Distribution (EBD), Hydraulic Brake Assist (HBA), Drag Torque Control (MSR), Electronic Differential Lock (EDL)
- Front-vented disc brakes (400 x 38 mm) with Bentley branded black brake callipers
- Rear-vented disc brakes (380 x 30 mm)
- Electronic parking brake with drive away assist
- Electronic Tyre Pressure Monitoring System (TPMS)
- Front suspension – four-link double wishbones
- Rear suspension – trapezoidal multi-link
- Air springs with Continuous Damping Control (CDC)
- Four 'floating' adaptive LED headlamps with integrated headlamp washer
- Full LED tail lamps
- Front and rear fog lamps
- Twilight sensor control and tunnel detection for lighting
- Bright chromed radiator matrix grille with chrome surround and centre bar
- Lower front bumper grilles in black
- Lower bodywork in technical grey finish
- Silver painted front screening panel
- Roof rails
- Polished brightware to side windows
- Twin-quad exhaust tailpipes
- Front fender vent
- Black bonnet and boot Bentley wing badges
- Panoramic roof with tilt and slide front panel and fixed rear panel
- Standard fuel and oil filler caps
- Electronically adjustable door mirrors with heating, power folding and memory functions
- Power latching to driver and passenger doors
- Power open-and-close boot system
- Remote central locking
- Volumetric ultrasonic alarm
- Keyless entry and ignition
- Acoustic front screen
- Heated rear screen

### INTERIOR

- Eliade upper trim
- Dark Fiddleback Eucalyptus veneer
- Five seat configuration with fluted seat inserts and padded door inserts
- Monotone interior colour combination
- Choice of five hide colours: Beluga, Cricket Ball, Imperial Blue, Newmarket Tan, Porpoise
- Carpet mats front and rear
- Boot carpet in Beluga
- Seatbelts to match all hide colours
- 16-way electric front seats, heated, and with memory\*
- Twin front armrest
- Dashboard-mounted Bentley branded analogue clock
- Metal bulls-eye vents with organ stops, front and rear
- Instrument dials with satin chrome bezels
- Treadplates branded with 'Bentley'
- Classic 'B' design foot pedals
- Footwell illumination
- Single-tone, three spoke, hide-trimmed steering wheel\*
- Steering wheel mounted gearshift paddles
- Electric tilt-and-reach adjustment steering column with memory and easy-entry functions
- Lockable, cooled glove box
- ISOFIX seat fixings to rear seat
- Rear heated bench seat
- 12V power sockets (three in cabin, one in boot)
- Rain-sensing windscreen wipers
- Alarm and immobiliser
- Multi-zone automatic climate control system
- Side air curtains
- Driver and front passenger airbag with front passenger deactivation\*
- Front and rear side thorax airbags

### DRIVER ASSIST

- Passive anti-roll bars
- ESP Off-Road features: roll-over mitigation (ROM), hill descent control, trailer sway mitigation (TSM), ESC Off-Road mode
- Blind spot assist\*
- Reversing camera with graphic on infotainment screen and audible warning
- Front and rear Park Distance Control
- Exit warning\*
- High Beam Assist
- Adaptive low beam
- Hill descent function
- Drive Dynamics Mode
- Navigation – featuring text-to-speech, voice destination entry and 3D building display\*
- Voice control and text-to-speech functionality
- Online real time traffic information\*
- Google Earth\*
- Google Street View\*
- Google POI\* (voice search)
- 4G LTE telephone module\*
- Bluetooth telephone preparation
- Active engine mounts
- Engine start/stop button

### ENTERTAINMENT

- Infotainment system with 8" capacitive touchscreen display, incorporating digital radio, HDD navigation, advanced music interface (AMI), single DVD/CD slot, two SD card slots and Bluetooth (A2DP) and Wi-Fi (uPnP) streaming
- Audio system with ten speakers
- Apple CarPlay®\*
- Satellite radio (Sirius)\*
- 60GB solid-state hard drive
- Wi-Fi hotspot\*
- Bluetooth and Wi-Fi audio streaming
- Touchscreen remote

## OPTIONAL SPECIFICATION

### EXTERIOR

- 56 additional exterior paint colours, duotone paints and bespoke colour matching service
- Body coloured lower bodywork
- 20" Ten spoke alloy wheel – painted (no cost option)
- 20" Ten spoke alloy wheel – polished (no cost option)
- 21" Five twin-spoke alloy wheel – polished
- 21" Five twin-spoke alloy wheel – black painted and diamond turned
- 21" Seven twin-spoke wheel – grey painted and diamond turned
- 21" Seven twin-spoke wheel – painted
- 22" Five spoke directional alloy wheel\* – painted
- 22" Five spoke directional alloy wheel\* – polished
- 22" Five spoke directional alloy wheel<sup>†</sup> – black painted and polished
- 21" All season tyres
- 21" or 22" Summer tyre
- Space saving rear wheel\*
- Carbon ceramic brakes
- Red brake callipers
- Hands-free tailgate\*
- Heated, acoustic front screen with metallic inter-layer
- Acoustic side windows
- Rear privacy glass
- Black gloss matrix style grille to upper and lower bumper apertures
- Union flag exterior badge
- Deployable sill step (retailer fit option)
- Cross bars (retailer fit option)
- Heavy-duty roof protection film between roof rails (retailer fit option)
- LED welcome lamps by Mulliner
- Battery charger\*
- Jewel fuel and oil filler caps
- Electrically retracting/fixed tow bar<sup>^</sup>\*

### INTERIOR

- Four Seat Comfort Specification with rear centre console (includes Front Seat Comfort Specification)
- Front Seat Comfort Specification including six massage programmes, ventilation, adjustable bolsters, electrical seatbelt adjustment and comfort headrests

- Seven Seat Specification with three seats in second row and two electrically folding seats in third row
- Cross-stitching
- Contrast stitching
- Hand cross-stitching to steering wheel in contrasting colour
- Bentley embroidery
- Choice of seven additional veneers: Burr Walnut, Dark Stained Burr Walnut, Dark Stained Madrona, Liquid Amber, Madrona, Piano Black, Tamo Ash
- Carbon fibre fascia, centre console, door waistrails and picnic tables
- Carbon fibre centre fascia panel
- Choice of ten additional hide colours: Brunel, Burnt Oak, Camel, Cumbrian Green, Damson, Hotspur, Linen, Magnolia, Portland, Saddle
- Choice of four colour splits
- Full leather interior, including upper trim
- Picnic tables
- Veneered centre fascia panel
- Interior mood lighting in six colours: Aurora, Jetstream, Magenta, Moonbeam, Neptune, Rubino and 'My Mood' functionality
- Duotone, three spoke, hide trimmed steering wheel\*
- Heated, duotone, three spoke, hide trimmed steering wheel\*
- Heated, single-tone, three spoke, hide trimmed steering wheel\*
- Wood and hide, three spoke steering wheel
- Colour-coded boot carpets to match interior carpet (available in five colours, not available on Seven Seat Configuration)
- Contrast binding to overmats
- Deep pile overmats to front and rear\*
- Lambswool rugs to front and rear (in addition to standard overmats)
- Load assist tray (retailer fit option)
- Trimmed storage compartment mounted onto the load assist tray (retailer fit option)
- Luggage management with telescopic dividing bar and restraining straps\*
- Remote controlled garage door opener\*
- GPS tracking system full fitment, in addition to standard alarm system\*
- Breitling clock with light mother-of-pearl face with eight diamonds at index positions

- Breitling clock with dark mother-of-pearl face with eight diamonds at index positions
- Valet key\*
- Dog crate (retailer fit option)
- Mulliner biometric secure stowage
- Comfort headrests to rear outer seats
- Refrigerated bottle cooler
- Mulliner console drinks cooler (only available on four seat specification)
- Drilled alloy sports foot pedals with matching footrest

### DRIVER ASSIST

- Trailer stability control
- Trailer assistant
- Bentley Dynamic Ride

### ENTERTAINMENT

- Naim for Bentley
- Bentley Signature Audio\*
- Bentley Rear Entertainment\*
- Digital TV\* tuner and digital radio
- USB charge sockets in rear

### PACKAGES

- All Terrain Specification\*
- Mulliner Driving Specification
- Colour Specification
- Touring Specification\*
- City Specification\*
- Event Specification
- Sunshine Specification\*
- Smoker's Specification\*
- Black Specification
- Blackline Specification
- Bentayga Styling Specification (retailer fit option)
- Activity Specification
- Glazing Specification
- Privacy Glazing Specification\*
- Winter Tyre Specification
- Centenary Specification (Centenary Logo to all Bentley Badges, Centenary Welcome Lamps, Centenary Treadplates). Option applied to all 2019 builds by default

\*Market specific.

<sup>†</sup>Only available as part of the Mulliner Driving Specification.



# Bentayga Speed

## STANDARD SPECIFICATION – IN ADDITION TO BENTAYGA V8 STANDARD SPECIFICATION

### EXTERIOR

- Bentayga Styling Specification – body coloured
- Choice of 17 standard paint colours: Beluga (Solid), Camel, Dark Cashmere, Dark Sapphire, Glacier White (Solid), Granite, Hallmark, Havana, Marlin, Meteor, Midnight Emerald, Moonbeam, Onyx, Portofino, St. James' Red (Solid), Thunder, White Sand
- Speed badges
- Body coloured front bumper apron
- Dark tint matrix style grille to upper and lower bumper apertures
- Front and rear dark tint lamps
- Speed illuminated treadplates
- 22" Speed ten spoke alloy wheel – silver painted
- Summer tyre
- Large oval exhaust tailpipes
- Jewel fuel and oil filler caps
- Heated, acoustic, front screen
- Acoustic side glass

### INTERIOR

- Choice of Speed colour combination or five alternative combinations. Speed colour split can be selected with Alcantara or leather
- Mulliner Driving Specification
- Colour Specification
- Choice of four veneers: Burr Walnut, Dark Fiddleback Eucalyptus, Dark Stained Burr Walnut, Piano Black
- Five seat configuration with diamond-quilted seat design
- Choice of 15 hide colours: Beluga, Brunel, Burnt Oak, Camel, Cumbrian Green, Damson, Cricket Ball, Hotspur, Imperial Blue, Linen, Magnolia, Newmarket Tan, Porpoise, Portland, Saddle
- Speed embroidery
- Speed interior badge
- Drilled alloy sports foot pedals

### DRIVER ASSIST

- Bentley Dynamic Ride
- Speed Character Pack

## OPTIONAL SPECIFICATION

### EXTERIOR

- 46 additional exterior paint colours, duotone paints and bespoke colour matching service
- Body coloured lower bodywork
- 22" Speed ten spoke alloy wheel – dark tint
- 22" Speed ten spoke alloy wheel – black painted (only available with Black Specification or Blackline Specification)
- Space saving rear wheel\*
- Carbon ceramic brakes
- Red brake callipers
- Hands-free tailgate\*
- Bright chromed matrix style grille to lower bumper apertures
- Electrically retracting/fixed tow bar\*
- Rear privacy glass\*
- Battery charger\*
- Bentayga Blackline Specification
- Deployable sill step (retailer fit option)
- Cross bars (retailer fit option)
- Heavy-duty roof protection film between roof rails (retailer fit option)

### INTERIOR

- Four Seat Comfort Specification with rear centre console (includes Front Seat Comfort Specification)
- Front Seat Comfort Specification including six massage programmes, ventilation, adjustable bolsters, electrical seatbelt adjustment and comfort headrests
- Seven Seat Specification with three seats in second row and two electrically folding seats in third row
- Full leather interior (no cost option)
- Contrast stitching
- Hand cross-stitching in contrasting colour
- Hand cross-stitching to steering wheel in contrasting colour
- Choice of four additional veneers: Dark Stained Madrona, Liquid Amber, Madrona, Tamo Ash
- Carbon fibre fascia, centre console, door waistrails and picnic tables
- Veneered centre fascia panel
- Veneered picnic tables
- Interior mood lighting in six colours: Aurora, Jetstream, Magenta, Moonbeam, Neptune, Rubino and 'My Mood' functionality
- Duotone, three spoke, hide trimmed steering wheel\* (only available if leather interior option is selected)
- Heated, duotone, three spoke, hide trimmed steering wheel\* (only available if leather interior option is selected)
- Heated, single-tone, three spoke, hide trimmed steering wheel\* (only available if leather interior option is selected)
- Wood and hide, three spoke steering wheel (only available if leather interior option is selected)
- Colour-coded boot carpets to match interior carpet (available in five colours, not available on Seven Seat Configuration)

## SPECIFICATIONS AND OPTIONS

- Contrast binding to overmats
- Deep pile overmats to front and rear\*
- Lambswool rugs to front and rear (in addition to standard overmats)
- Load assist tray (retailer fit option)
- Trimmed storage compartment mounted onto the load assist tray (retailer fit option)
- Luggage management with telescopic dividing bar and restraining straps\*
- Parking heater\* with radio remote control
- Remote controlled garage door opener\*
- GPS tracking system full fitment, in addition to standard alarm system\*
- Breitling clock with light mother-of-pearl face with eight diamonds at index positions
- Breitling clock with dark mother-of-pearl face with eight diamonds at index positions
- Valet key\*
- Dog crate (retailer fit option)
- Rear comfort headrests (five seat specification only)
- Refrigerated bottle cooler

### DRIVER ASSIST

- Trailer stability control
- Trailer assistant

### ENTERTAINMENT

- Naim for Bentley
- Bentley Signature Audio\*
- Bentley Rear Entertainment\*
- Digital TV\* tuner and digital radio
- USB charge sockets in rear

### PACKAGES

- All Terrain Specification\*
- Touring Specification\*
- City Specification\*
- Event Specification
- Sunshine Specification\*
- Smoker's Specification\*
- Activity Specification
- Black Specification
- Blackline Specification
- Bentayga Styling Specification (retailer fit option)
- Winter Tyre Specification
- Centenary Specification (Centenary Logo to all Bentley Badges, Centenary Welcome Lamps, Centenary Treadplates). Option applied to all 2019 builds by default





BENTAYGA V8

Engine: 4.0 litre twin-turbocharged V8  
Max power: 542 bhp / 404 kW / 550 PS @ 6,000 rpm  
Max torque: 770 Nm / 568 lb ft @ 1,960 - 4,500 rpm  
Transmission: 8-speed automatic  
Driveline: Permanent all-wheel drive with 40:60 front-to-rear torque split  
Top speed: 180 mph / 290 km/h  
0-60 mph / 0-100 km/h: 4.4 seconds / 4.5 seconds  
Wheelbase: 2,995 mm / 9 ft 10 in  
Overall length: 5,140 mm / 16 ft 10 in  
Width (across body): 1,998 mm / 6 ft 7 in  
Width (including mirrors): 2,224 mm / 7 ft 4 in  
Overall height: 1,742 mm / 5 ft 9 in  
Fuel tank: 85 litres / 18.7 gallons  
Boot volume (four seat configuration): 431 litres / 15.2 cu ft  
Boot volume (five seat configuration): 484 litres / 17.1 cu ft  
Boot volume (seven seat configuration): 215 litres / 7.6 cu ft  
Kerb weight: 2,388 kg / 5,264 lb  
Gross weight: 3,250 kg / 7,165 lb

**Fuel consumption (WLTP Cycle)**  
Low: 14.2 mpg / 19.9 l/100km  
Medium: 21.6 mpg / 13.1 l/100km  
High: 25.2 mpg / 11.2 l/100km  
Extra High: 22.1 mpg / 12.8 l/100km  
Combined: 21.2 mpg / 13.3 l/100km  
CO<sub>2</sub> combined: 302 g/km  
Driving range: 397 miles / 639 km

**Fuel consumption (NEDC Cycle)\***  
Urban: 18.0 mpg / 15.7 l/100km  
Extra Urban: 30.4 mpg / 9.3 l/100km  
Combined: 24.4 mpg / 11.6 l/100km  
CO<sub>2</sub> Emissions: 265 g/km

**Fuel consumption (US)\***  
City driving (US): 14.0 mpg  
Highway driving (US): 23.0 mpg  
Combined driving (US): 17.0 mpg  
CO<sub>2</sub> EPA drivecycle: 416 g/mile / 260g/km



BENTAYGA SPEED

Engine: 6.0 litre twin-turbocharged direct injection W12  
Max power: 626 bhp / 467 kW / 635 PS @ 5,000 - 5,750 rpm  
Max torque: 900 Nm / 664 lb ft @1,500 - 5,000 rpm  
Transmission: 8-speed automatic  
Driveline: Permanent all-wheel drive with 40:60 front-to-rear torque split  
Top speed: 190 mph / 306 km/h  
0-60 mph / 0-100 km/h: 3.8 seconds / 3.9 seconds  
Wheelbase: 2,995 mm / 9 ft 10 in  
Overall length: 5,140 mm / 16 ft 10 in  
Width (across body): 1,998 mm / 6 ft 7 in  
Width (including mirrors): 2,224 mm / 7 ft 4 in  
Overall height: 1,742 mm / 5 ft 9 in  
Fuel tank: 85 litres / 18.7 gallons  
Boot volume (four seat configuration): 431 litres / 15.2 cu ft  
Boot volume (five seat configuration): 484 litres / 17.1 cu ft  
Boot volume (seven seat configuration): 215 litres / 7.6 cu ft  
Kerb weight: 2,491 kg / 5,492 lb  
Gross weight: 3,250 kg / 7,165 lb

**Fuel consumption (WLTP Cycle)**  
Low: 11.7 mpg / 24.1 l/100km  
Medium: 18.3 mpg / 15.4 l/100km  
High: 22.6 mpg / 12.5 l/100km  
Extra High: 22.1 mpg / 12.8 l/100km  
Combined: 19.2 mpg / 14.7 l/100km  
CO<sub>2</sub> combined: 335 g/km  
Driving range: 359 miles / 578 km

**Fuel consumption (NEDC Cycle)\***  
Urban: 13.9 mpg / 20.3 l/100km  
Extra Urban: 27.2 mpg / 10.4 l/100km  
Combined: 20.2 mpg / 14.0 l/100km  
CO<sub>2</sub> Emissions: 320 g/km

**Fuel consumption (US)\***  
City driving (US): TBC\*\*  
Highway driving (US): TBC\*\*  
Combined driving (US): 17.9 mpg  
CO<sub>2</sub> EPA drivecycle: 496 g/mile / 308 g/km

Your mileage will vary and depends on several factors including your driving habits and vehicle condition. See [www.fueleconomy.gov](http://www.fueleconomy.gov) for updated information.

\*This data is based on the North American drivecycle and is provisional, subject to Type Approval.

\*\*2019 EPA estimates not available at time of publication.

<sup>†</sup>NEDC Drive Cycle figures applicable to the following countries:  
Armenia, Azerbaijan, Bahrain, Belarus, Brazil, Cambodia, Chile, Dominican Republic, Egypt, Guatemala, Hong Kong, India, Indonesia, Japan, Kazakhstan, Kuwait, Lebanon, Macau, Malaysia, Mongolia, Morocco, New Zealand, Oman, Panama, Peru, Philippines, Qatar, Russian Federation, Saudi Arabia, Singapore, Taiwan, Thailand, United Arab Emirates.

Bentayga Speed & V8 WLTP drive cycle: fuel consumption, mpg (l/100km) – Combined 19.2-21.2 (13.3-14.7). Combined CO<sub>2</sub> – 302-335 g/km.

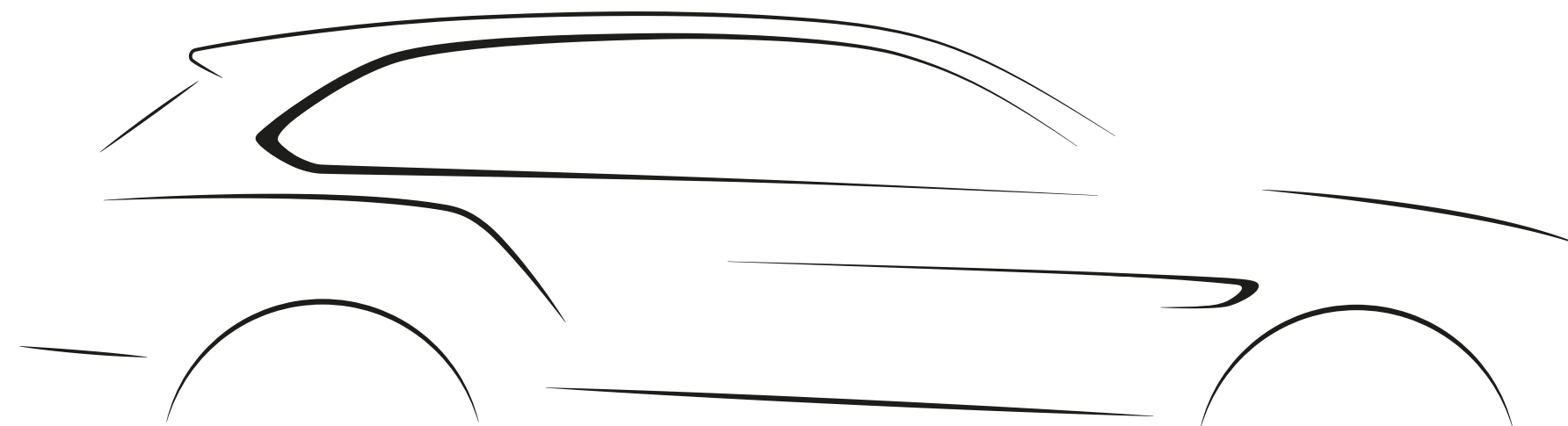






Bentayga Speed WLTP drive cycle: fuel consumption, mpg  
(l/100km) – Combined 19.2 (14.7). Combined CO<sub>2</sub> – 335 g/km.





The models presented in this brochure include optional specifications. Specifications, standard equipment, options, fabrics and colours are subject to change without notice. Your Bentley retailer will always have the latest information. The name 'Bentley' and the 'B' wings design are registered trademarks of Bentley Motors Limited. Bentley Motors Limited acknowledges the rights of third parties in other trademarks. The models shown may include European and non-European specifications. © July 2019.