



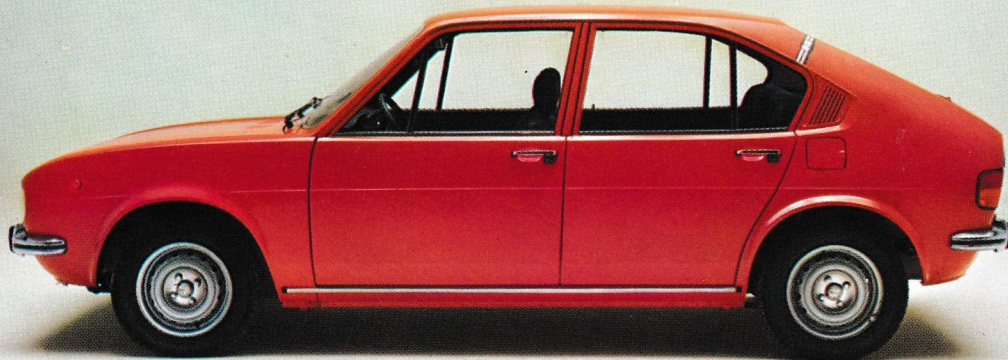
Alfa Romeo



The Italian family

A range of seven superb cars; each one an example of Alfa Romeo's advanced design and engineering techniques. From the sporty, economical Alfasuds to the classic Alfettas and thoroughbred Alfetta G.T.'s. Individual cars for individual people, with all the style, acceleration and legendary roadholding that has become synonymous with Alfa Romeo.

Alfa Romeo's range of cars start from just over £2000 to around £5000.
Test drive a legend.



ALFASUD 5m

Engine:

4 cylinder, horizontally opposed, 1186 cc (80 x 59 mm) 73 bhp SAE, 63 bhp DIN at 6000 rpm. Camshaft on each cylinder bank.

Fuel System:

Single downdraught carburettor.

Transmission:

All synchromesh 5 speed + reverse. Floor mounted gear lever. Hydraulically operated clutch. Gearbox, clutch and differential in a single front wheel drive unit.

Four Disc Brakes:

Servo operated with double circuit. Braking power regulator on rear wheels.

Steering:

By rack and pinion. Steering column adjustable for height, safety type.

Tyres:

165/70 SR x 13.

Dimensions:

Length 12' 10.5" (393 cm). Width 5' 2.5" (159 cm). Height 4' 6" (137 cm). Weight 1892 lbs (860 kg).

Performance:

Maximum speed, more than 150 km/h (94 mph).

Acceleration:

Standing kilometre 36.3 secs.



ALFASUD Ti

Engine:

4 cylinder, horizontally opposed, 1186cc (80 x 59mm) 79 bhp SAE, 68 bhp DIN at 6000rpm. Camshaft on each cylinder bank.

Fuel System:

Twin choke downdraught carburettor.

Transmission:

All synchromesh 5-speed + reverse. Floor mounted gear lever. Hydraulically operated clutch. Gearbox, clutch and differential in a single front wheel drive unit.

Four Disc Brakes:

Servo operated with double circuit. Braking power regulator on rear wheels.

Steering:

By rack and pinion. Steering column adjustable for height. Safety type.

Tyres:

165/70 SR x 13.

Dimensions:

Length: 12' 10.5" (393cm). Width: 5' 2.25" (159cm). Height: 4' 6" (137cm). Weight: 1782 lbs (810kg).

Performance:

Maximum speed, more than 160km/h (100mph).

Acceleration:

Standing kilometre in 35secs. 0-60mph in 12.9secs.



ALFETTA 1.6

Engine:

4 cylinder, 1570 cc (78 x 82 mm). 116 bhp SAE, 109 bhp DIN at 5600 rpm. 2 overhead camshafts.

Fuel System:

2 horizontal twin choke carburetors.

Transmission:

All synchromesh 5-speed + reverse. Hydraulically operated clutch. Transmission unit is integral with the rear axle.

Four Disc Brakes:

Servo operated with double circuit. Braking power regulator on rear wheels.

Steering:

Steering column adjustable for height. Safety type.

Tyres:

165 SR x 14.

Dimensions:

Length: 13' 11" (424 cm). Width: 5' 3.75" (162 cm). Height: 4' 8.25" (143 cm). Weight: 2332 lbs (1060 kg).

Performance:

Maximum speed, more than 175 km/h (109 mph).

Acceleration:

Standing kilometre in 33 secs.



ALFETTA 1.8

Engine:

4 cylinder, 1779cc (80 x 88.5 mm). 135 bhp SAE, 118 bhp DIN at 5300rpm. 2 overhead camshafts.

Fuel System:

2 horizontal twin choke carburettors.

Transmission:

All synchromesh 5-speed + reverse. Floor mounted gear lever. Hydraulically operated clutch. Transmission unit is integral with the rear axle.

Four Disc Brakes:

Servo operated with double circuit. Braking power regulator on rear wheels.

Steering:

Steering column adjustable for height. Safety type.

Tyres:

165 SR x 14.

Dimensions:

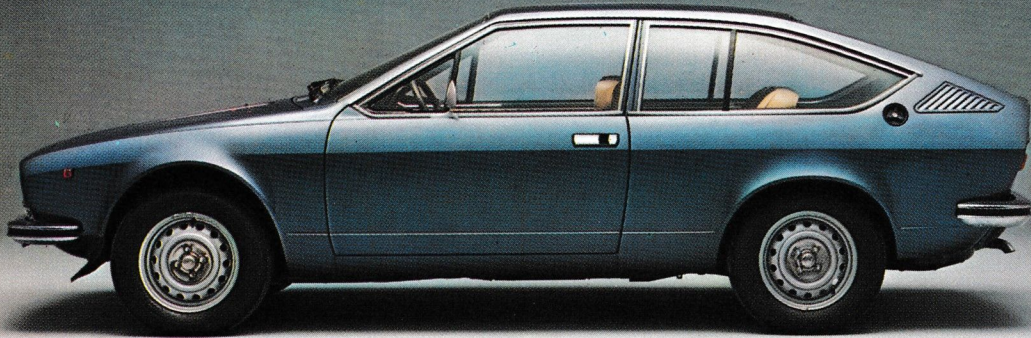
Length: 14'0.5" (428cm). Width: 5'3.75" (162cm). Height: 4'8.25" (143cm). Weight: 2332 lbs (1060 kg).

Performance:

Maximum speed, more than 180km/h (112 mph).

Acceleration:

Standing kilometre in 31.8secs. 0-60 mph in 9.5 secs.



ALFETTA GT 1.6

Engine:

4 cylinder, 1570cc (78 x 82mm) 116 bhp SAE, 109 bhp DIN at 5600 rpm. 2 overhead camshafts.

Fuel System:

2 horizontal twin-choke carburettors.

Transmission:

All synchromesh 5 speeds + reverse. Hydraulically operated clutch. Transmission unit integral with the rear axle.

Four Disc Brakes:

Servo operated with double circuit. Braking power regulator on rear wheels.

Steering:

Steering column adjustable for height, safety type.

Tyres:

185/70 HR x 14.

Dimensions:

Length: 13' 8.75" (419cm). Width: 5' 5.5" (166cm). Height: 4' 4.25" (133cm). Weight: 2288 lbs (1040 kg).

Performance:

Maximum speed more than 170 km/h (111.8 mph).

Acceleration:

Standing kilometre 32.8secs.



ALFETTA GTV 2000

Engine:

4 cylinder 1962cc (84 x 88.5mm) 122 bhp DIN at 5300rpm. 2 overhead camshafts.

Fuel System:

2 horizontal twin choke carburettors.

Transmission:

All synchromesh 5-speed + reverse. Hydraulically operated clutch. Transmission unit integral with the rear axle.

Four Disc Brakes:

Servo operated with double circuit. Brake power regulator on rear wheels.

Steering:

Steering column adjustable for height. Safety type.

Tyres:

185/70 HR x 14.

Dimensions:

Length: 13'9.5" (421 cm). Width: 5'5.5" (166 cm). Height: 4'4.25" (133 cm). Weight: 2376 lbs (1080 kg).

Performance:

Maximum speed more than 193 km/h (120.5 mph).

Acceleration:

Standing kilometre 30.6 secs.



2000 SPIDER VELOCE

Engine:

4 cylinder, 1962 cc (84 x 88.5 mm). 150 bhp SAE, 140 bhp DIN at 5500 rpm. 2 overhead camshafts.

Fuel System:

2 horizontal twin choke carburettors.

Transmission:

All synchromesh 5-speed + reverse. Floor mounted gear lever. Hydraulically operated clutch.

Four Disc Brakes:

Servo operated with double circuit. Braking power regulator on rear wheels.

Tyres:

165 HR x 14.

Dimensions:

Length: 13' 6.25" (412 cm). Width: 5' 4.24" (163 cm). Height: 4' 2.75" (129 cm).
Weight: 2288 lbs (1040 kg).

Performance:

Maximum speed, more than 195 km/h (121 mph).

Acceleration:

Standing kilometre 30.6 secs. 0-60 mph in 8.9 secs.



Some legends are based on fact

In 1910 a group of Italian businessmen bought the Naples based car factory of Alexandre Darracq, changing the name to Anonima Lombarda Fabbrica Automobili - A.L.F.A. for short.

In 1914, after the company had moved to Milan, the renowned engineer Nicola Romeo took charge of Alfa; and after the war the first Alfa Romeos took to the road. Thus the name was born.

It was in 1923 after a number of individual racing successes that the legend began to take substance. 1st, 2nd and 4th places in the gruelling Targa Florio marked the beginning of Alfa's successful involvement in motor racing. An involvement that was, and always has been, utilised to refine developments for use in their ordinary production cars (if one could ever call an Alfa Romeo ordinary!). This can be seen in the progression from the 1300cc through to the 2000cc and beyond. A result of the success and expertise gained on the racing track.

And so, although the legend was formed on the track, it was reinforced through Alfa Romeo's production cars. Cars with twin-overhead cams, all aluminium engines, synchromesh five-speed gears, servo-disc brakes all round, legendary roadholding and acceleration.

Even now, with two of the most modern car factories in Europe complete with their own comprehensive testing grounds, it's on the race track that new developments are honed to perfection.

With 4 Le Mans wins, 9 Targa Florio, 11 Mille Miglia, 58 Grand Prix, 4 World Championships and an average of over 500 sports prototype and production car victories a year, Alfa Romeo's commitment to motor racing pays off in each and every Alfa that's on the road.

Test drive an Alfa Romeo. You'll find there's a lot more to some legends than to others.